

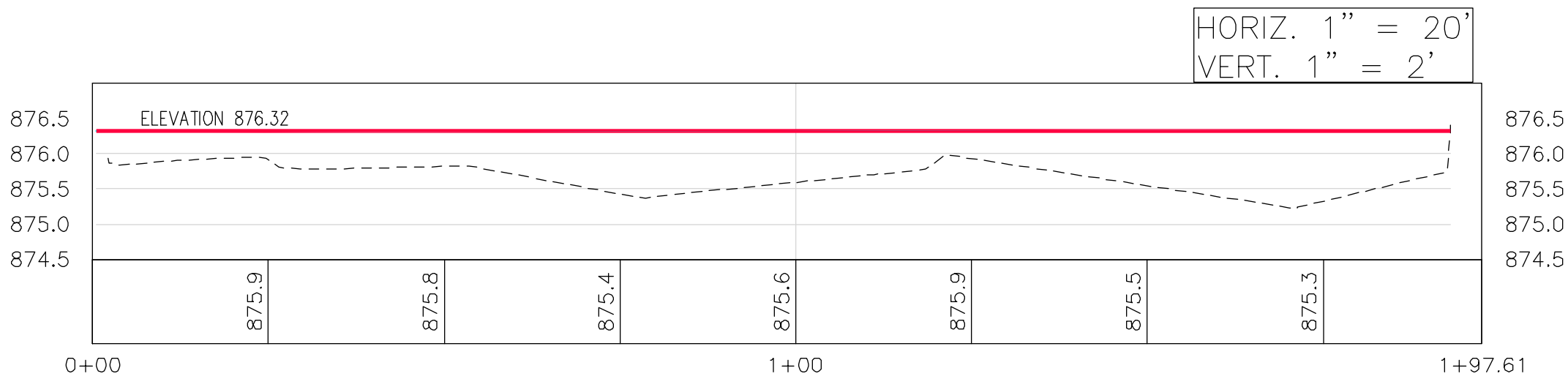


SUMMARY OF AVAILABLE STORAGE WITHIN STORMWATER INFRASTRUCTURE		
PIPE SIZE	PIPE LENGTHS	PIPE VOLUME (GALLONS)
12"	85	499
12"	50	294
12"	140	823
12"	60	353
12"	120	705
12"	105	617
12"	25	147
12"	30	176
12"	90	529
15"	120	429
18"	135	1,785
18"	105	1,388
18"	50	661
66"	141	25,061
12"	200	1,175
12"	154	905
12"	46	270
12"	105	617
SUBTOTAL	VOLUME IN PIPES	36,433
15	MANHOLE / STRUCTURE VOLUME	7,960
TOTAL	VOLUME IN STORMWATER INFRASTRUCTURE	44,393

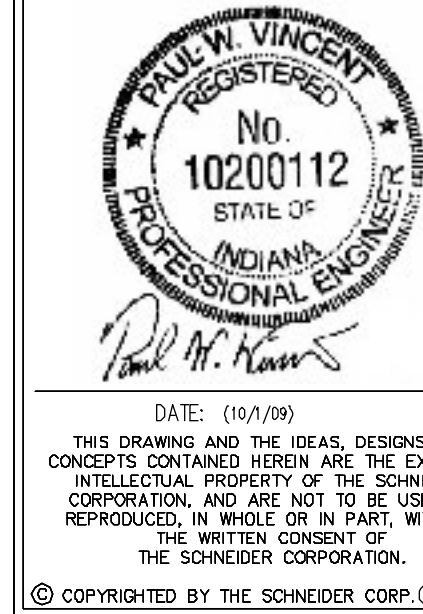
DESCRIPTION	RUNOFF COEFFICIENT (C)	RAINFALL INTENSITY (I)	AREA (A)	RUNOFF (ft/s) (Q)	RUNOFF (gpm) (Q)
PAVEMENT AREAS	0.85	1"hr	6.188 AC.	5.258 ft/s	2,360 gpm
UNIMPROVED AREAS	0.3	1"hr	1.905 AC.	0.5715 ft/s	256.5 gpm
SUMMARY / TOTAL				5.8296 ft/s	2,616.50
*ABOVE RUNOFF CALCULATIONS BASED ON "RATIONAL METHOD" DESCRIBED IN CITY OF INDIANAPOLIS STORMWATER SPECIFICATION MANUAL.					
*ASSUMED RUNOFF COEFFICIENTS: PAVED AREAS = 0.85, UNIMPROVED AREAS = 0.3, IN ACCORDANCE WITH CITY OF INDIANAPOLIS STORMWATER SPECIFICATION MANUAL.					
*RESULT IS 156,990 GALLONS PER HOUR DURING A 1" PER HOUR RAIN EVENT					

NOTE:

- EXISTING ON-SITE STORMWATER STORAGE IS THE SUM OF THE VOLUME IN THE STORMWATER INFRASTRUCTURE (44,393 - GALLONS) PLUS THE SURFACE STORMWATER STORAGE WITH NO WORK (227,856 - GALLONS). TOTAL = 272,249 GALLONS



REVISIONS:



THE SCHNEIDER CORPORATION
Historic Fort Harrison
8901 Otis Avenue
Indianapolis, IN 46216-1037
Telephone: 317.826.7100
Fax: 317.826.7300
www.schneidercorp.com

Architecture
Civil Engineering
Environmental Engineering
Geotechnical Services
GIS * LIS
Home Builder Services
Interior Design
Land Surveying
Landscape Architecture
Transportation Engineering

ECOLOGICAL SYSTEMS, INC.
NORTHWEST FACILITIES
STORMWATER CONDITIONS
INDIANAPOLIS, IN
EST ENVIRONMENTAL INC.
5232 WEST 79TH STREET
INDIANAPOLIS, IN 46268

DATE: 10/01/09 PROJECT NO.: 7617.001
DRAWN BY: KDK CHECKED BY: PWV
SHEET TITLE: EXISTING STORMWATER CONTAINMENT AREA
DRAWING FILES:
T:\7617\001\dwgs\C103.dwg
X-ref: T:\7617\001\dwgs\S020051-01.mxd
X-ref: T:\7617\001\dwgs\S020051-02.mxd

SHEET NO.: C103