



614 Magnolia Avenue
Ocean Springs, Mississippi 39564
Phone 228.818.9626
Fax 228.818.9631

February 22, 2011

Mr. Valmichael Leos
U.S. Environmental Protection Agency, Region 6
1445 Ross Avenue, Suite 1200
Dallas, Texas 75202-2733

Re: San Jacinto River Waste Pits Superfund Site
TCRA Weekly Progress Report No. 015 for February 14-18, 2011;
U.S. EPA Region 6, CERCLA Docket No. 06-12-10

Project Number: 090557-01

Dear Mr. Leos:

Attached please find TCRA Weekly Progress Report No. 015 for February 14-18, 2011. This report was prepared on behalf of the International Paper Company and McGinnes Industrial Maintenance Corporation for the San Jacinto River Waste Pits Superfund Site in Channelview, Texas. Should you have any questions, please contact me at (228) 818-9626 or email me at dkeith@anchorqea.com.

Sincerely,

A handwritten signature in black ink, appearing to read "John P. Laplante", with a long horizontal flourish extending to the right.

John Laplante for David C. Keith
Project Coordinator

cc: Phil Slowiak, International Paper
Andrew Shafer, MIMC
Jennifer Sampson, Integral Corp.

TCRA Weekly Progress Report No. 015
Submitted February 22, 2011
San Jacinto River Waste Pits Superfund Site
USEPA Region 6, CERCLA Docket No. 06-12-10
Channelview, Texas

This weekly progress report is submitted pursuant to the Administrative Settlement Agreement and Order on Consent for Removal Action: CERCLA Docket No. 06-12-10, Channelview, Texas, which became effective on May 11, 2010. The Respondents are International Paper Company (IP) and McGinnes Industrial Maintenance Corporation (MIMC).

A. Summary of Work Performed – Dates: February 14-18, 2011

The Respondents, Anchor QEA, and USA Environment, completed work on the following tasks:

- Submitted TCRA Weekly Progress Report No. 014 on February 14, 2011.
- Construction Activities:
 - Received additional Armor Cap D rock at LaBarge Property.
 - Received road base aggregate, placed geotextile, and graded and compacted road base aggregate for construction of the haul road at the TxDOT ROW.
 - Began construction of the TxDOT turnaround and stockpile areas south of Big Star property.
 - Completed pre-cap hydrographic survey in area of waste impoundments.
 - Deployed turbidity curtain around perimeter of in-water work area.
 - Began placement of geotextile and Armor Cap D rock in eastern cell of waste impoundments. Approximately 520 tons of Armor Cap D rock was placed through the end of the reporting period.
- Participated in TCRA Update meeting with USEPA on February 18, 2011, in Baytown, Texas.
- Coordinated with TxDOT on using steel guard rail as an alternative to portable concrete traffic barriers (CTBs) to protect the I-10 Bridge, including providing to TxDOT a draft amendment to the access agreement to allow for the use of steel guard rails. The effort is ongoing and is anticipated to be completed this week and not delay installation.
- Made additional improvements for site security, including addition of barbed wire to fencing at the Administrative Area.

TCRA Weekly Progress Report No. 015
Submitted February 22, 2011
San Jacinto River Waste Pits Superfund Site
USEPA Region 6, CERCLA Docket No. 06-12-10
Channelview, Texas

- Repaired fencing at Big Star property.

B. Summary of Agency Communications

The written communications between the Respondents and USEPA, including and subsequent to the issuance of the Final Removal Action Work Plan, are summarized in the attached Table 1.

C. Summary of Sampling Results

None for this report.

D. Problems, Delays, and Solutions

No new issues were identified during the past week.

E. Projected Work for the Next 2 Weeks – Dates: February 28-March 11, 2011

The Respondents, Anchor QEA, and USA Environment, expect to complete the following tasks in the next 2 weeks:

- Finalize remaining contractor work plans referenced in Section 4.4 of the approved TCRA Removal Action Work Plan.
- Ship next train load of natural stone aggregate (Armor Cap C) from the quarry to Texas City. This material will be stored in Texas City until space becomes available at the LaBarge Site, or within Laydown and Stockpile Area to be constructed in the TxDOT ROW.
- Take additional steps to address Site security.
- Finalize preparation of the Administration Site including:
 - Have electrical hookup inspected and activated.
 - Finish communication and sewer hookups for the job-site trailers.
 - Install identification signs for the Administration Site.
 - Develop plan for managing Site visitors, including Plans for providing safety briefing and maintaining a visitor log.
- Continue LaBarge Site activities including:
 - Continue to support marine construction activities.
 - Continue to supplement stockpile of aggregate as space becomes available.

TCRA Weekly Progress Report No. 015
Submitted February 22, 2011
San Jacinto River Waste Pits Superfund Site
USEPA Region 6, CERCLA Docket No. 06-12-10
Channelview, Texas

- On the TxDOT ROW, construct additional improvements in the ROW for turnaround and stockpile areas as permitted by the access agreement with TxDOT.
- Complete an amendment to the access agreement with TxDOT to permit the use of steel guard rails in lieu of CTBs to protect the I-10 Bridge.
- On the waste pits:
 - Continue clearing and grubbing of the western cell.
 - Continue installation of armor cap in eastern cell.

F. Schedule

Attached is the approved project construction schedule, which is being included as directed by USEPA in a letter from Valmichael Leos to David Keith of Anchor QEA dated February 10, 2011. A proposed updated project construction schedule, based on Respondents having obtained access to the TxDOT ROW and secured a lease for a laydown area and dock facility, was transmitted to USEPA on February 14, 2011, and is also attached to this report. Respondents prepared the updated project construction schedule pursuant to USEPA's direction, and it further revises and updates the schedule presented and submitted to USEPA at a January 31, 2011 meeting.

Prepared by:

John Laplante /for/ David C. Keith

Project Coordinator

Table of Agency TCRA Communications

Respondents Submittal Date	Respondents Communication Summary	Response from USEPA Date	USEPA Communication Summary	Notes
11/1/2010	Draft Final Removal Action Work Plan (RAWP) for Time Critical Removal Action	11/8/2010	TCRA Work Plan Approval with Modifications	
11/1/2010	Report on Respondents' best efforts to obtain access			
		11/2/2010	Letter from B. Nann regarding access	
11/9/2010	Memorandum - Review of Geomembrane Comments			
		11/9/2010	Email from B. Nann to Axe/Inglin requesting conference call on November 15, 2010 regarding TCRA access issues	
11/11/2010	Draft Pre-construction Meeting Agenda			
11/11/2010	Final Removal Action Work Plan (RAWP) for Time Critical Removal Action			
11/12/2010	Letter to EPA regarding access			
11/15/2010	Conference call with EPA B. Nann regarding access			Conference call to discuss the technical memorandum about water access versus land access to the TCRA Site. B. Nann stated that RAWP approval occurred 11/8/2010
11/15/2010	TCRA Weekly Progress Report 001 email from J. Laplante to V. Leos and five hard copies			
11/16/2010	Marine Access memo email from D. Keith to USEPA C. Sanchez			Email to USEPA technical team regarding issues related to water-only access to the TCRA site
		11/16/2010	Email from B. Nann to Respondents regarding meeting with Sam Coleman regarding access by water	
11/17/2010	Teleconference between D. Keith and C. Sanchez and V. Leos to discuss the 11/18 technical meeting at USEPA regarding site access			
		11/17/2010	Email from B. Nann to Respondents and TxDOT regarding meeting in Dallas on access issues	
11/17/2010	Email from IP counsel to B. Nann transmitting draft TxDOT license agreement			
11/17/2010	Emails from IP and MIMC counsel to B. Nann regarding meeting with Sam Coleman regarding access			Meeting with Sam Coleman, USEPA Superfund Division Director, to discuss access issues. Meeting took place 11/18/2010.
11/18/2010	Submittal of financial assurance by MIMC to cover revised TCRA cost estimate			
11/22/2010	TCRA Weekly Progress Report 002 email from J. Laplante to V. Leos and 5 hard copies			
11/22/2010	Financial assurance submission by IP with respect to the revised TCRA financial assurance amount			
11/23/2010	Submitted Notice of Start of Construction letter to USEPA			
11/23/2010	Prepared and submitted Request for State Historic Preservation Officer Consultation Form and supplemental information to Mark Wolfe, State Historic Preservation Officer			
11/29/2010	TCRA Weekly Progress Report 003 email from W. Mears to V. Leos and 5 hard copies			
11/30/2010	Submitted Request for Section 401 of the CWA Consultation Review to S. Reilly of TCEQ, with copy to V. Leos			
11/30/2010	Preliminary (unvalidated) Big Star property chemistry data submitted to V. Leos by D. Keith via email			
11/30/2010			Email from V. Leos of USEPA regarding status of preliminary data from Big Star soil sampling	
11/30/2010			Email from B. Nann of USEPA to Respondents' counsel regarding the status of the Big Star sampling results	
11/30/2010	Submitted proposed road license agreement with TxDOT, signed by Respondents' counsel, to B. Nann of USEPA			

Table of Agency TCRA Communications

Respondents Submittal Date	Respondents Communication Summary	Response from USEPA Date	USEPA Communication Summary	Notes
11/30/2010	Submitted letter to EPA describing Respondents' "best efforts" to obtain access from Big Star and TxDOT and requesting an extension of time to obtain access	12/3/2010		
12/1/2010	Email from MIMC's counsel on behalf of Respondents to B. Nann urging USEPA's quick turnaround on analysis of Big Star soil sample results			
12/1/2010	Email to V. Leos from Project Coordinator updating Big Star soil sampling data			
12/2/2010			Email from B. Nann to Respondents' counsel regarding status of USEPA's analysis of Big Star's sample results and scheduling of conference call to discuss access issues	
12/2/2010	Email from IP Counsel on behalf of Respondents' to B. Nann and S. Coleman regarding obstacles to obtaining access from Big Star and TxDOT	12/3/2010		
12/3/2010			Email from B. Nann to Respondents' counsel and S. Coleman responding to Respondents' December 2, 2010 email regarding obstacles to obtaining access	
12/3/2010	Email from IP counsel on behalf of Respondents' to B. Nann and S. Coleman responding to EPA's December 3, 2010 email regarding access issues			
12/3/2010			Letter from USEPA responding to Respondents' November 30, 2010 letter regarding best efforts, denying extension of time to obtain access	
12/6/2010	TCRA Weekly Progress Report 004 email from J. Laplante to V. Leos and five hard copies			
		12/6/2010	Email from B. Nann to Respondents' counsel regarding TxDOT and Big Star access issues and status of Big Star as PRP	
12/6/2010	Email from IP counsel to B. Nann on behalf of Respondents' regarding van der Horst Site access agreement	12/6/2010	Email from B. Nann to Respondents' counsel regarding van der Horst access agreement	
12/6/2010	Email from IP counsel to USEPA counsel handling van der Horst site regarding access agreement			
12/6/2010	Email from B. Nann to Respondents' counsel regarding scheduling of conference call on access issues			Conference call between Respondents' counsel and USEPA regarding TxDOT access takes place on December 7, 2010
12/6/2010	Email from IP counsel on behalf of Respondents' to B. Nann regarding proposed Big Star lease terms			
12/6/2010	Email from IP counsel on behalf of Respondents' to B. Nann regarding signed access agreement with Big Star for installation of Phase II fencing			
		12/7/2010	Email from B. Nann stating USEPA's approval of Big Star property as a laydown area	
12/7/2010	Email to B. Nann from MIMC counsel on behalf of Respondents' regarding scheduling of conference call with USEPA and Big Star regarding lease			
		12/7/2010	Email from B. Nann to Respondents' counsel regarding her call to Big Star attorney	
		12/7/2010	Email from B. Nann regarding status of proposed TxDOT access agreement language	
12/7/2010	Emails to B. Nann from IP counsel on behalf of Respondents' regarding proposed TxDOT license agreement			
12/7/2010	Email from IP counsel on behalf of Respondents' to B. Nann regarding status of her conversation with Big Star counsel			
		12/8/2010	Email from B. Nann to Respondents' counsel regarding TxDOT and Big Star access status	

Table of Agency TCRA Communications

Respondents Submittal Date	Respondents Communication Summary	Response from USEPA Date	USEPA Communication Summary	Notes
12/8/2010	Email to B. Nann from IP counsel on behalf of Respondents' regarding TxDOT and Big Star access issues			
12/8/2010	Email to Big Star counsel and B. Nann from IP counsel on behalf of Respondents' regarding status of lease			
		12/8/2010	Email from USEPA counsel for van der Horst site regarding site access agreement with TxDOT	
12/8/2010	Email from IP counsel to USEPA counsel for van der Horst site regarding access agreement with TxDOT			
12/9/2010	Email from A. Shafer (MIMC) to V. Leos and S. Tzhone requesting guidance regarding sign size			
12/9/2010			Email from USEPA V. Leos with a copy of USEPA Pollution Report (POLREP) for the TCRA	
12/10/2010	Email to B. Nann from MIMC counsel on behalf of Respondents' regarding status of TxDOT and Big Star access issues			
12/10/2010	Email to B. Nann from IP counsel on behalf of Respondents' asking if B. Nann would schedule a conference call between Big Star, USEPA, and Respondents' counsel			
12/10/2010	Email to B. Nann from MIMC counsel on behalf of Respondents regarding Big Star Status as a PRP			
12/13/2010	TCRA Weekly Progress Report 005 email from J. Laplante to V. Leos and five hard copies			
12/13/2010	Email to B. Nann from IP counsel on behalf of Respondents regarding status of Big Star and TxDOT access issues			
12/15/2010	Email to B. Nann from MIMC counsel on behalf of Respondents regarding Big Star's position on lease	12/16/2010	Email from B. Nann regarding Big Star's demand for a release of all claims	
12/17/2010	Email to B. Nann from IP counsel on behalf of Respondents regarding Big Star's position on access and requesting EPA's assistance			
12/17/2010	Email to B. Nann from IP counsel on behalf of Respondents asking for conference call to discuss Big Star's demand for a release as a condition of access			
12/20/2010	TCRA Weekly Progress Report 006 email from J. Laplante to V. Leos and five hard copies			
12/21/2010	Email to B. Nann from IP counsel on behalf of Respondents regarding latest demand for full release from Big Star counsel and requesting opportunity to discuss same			
		12/23/2010	Letter from USEPA V. Leos to Respondents in regarding TxDOT access	
12/27/2010	TCRA Weekly Progress Report 007 email from J. Laplante to V. Leos and five hard copies			
		12/27/2010	Email to Respondents' counsel from B. Nann of USEPA forwarding copy of EPA's 12/23/2010 correspondence (letter was not received by Respondents until it was forwarded by USEPA's counsel on December 27 and original sent by mail was not received until December 30, 2010)	

Table of Agency TCRA Communications

Respondents Submittal Date	Respondents Communication Summary	Response from USEPA Date	USEPA Communication Summary	Notes
		12/30/2010	Letter from USEPA V. Leos to Respondents in regarding TxDOT access, as followup to USEPA letter dated 12/23/2010	
12/30/2010	Letter to V. Leos of USEPA from MIMC counsel on behalf of Respondents in response to USEPA's letters dated 12/23/2010 and 12/30/2010 and initial force majeure notice			
1/3/2011	TCRA Weekly Progress Report 008 email from J. Laplante to V. Leos and five hard copies			
1/4/2011	Email to USEPA from D. Shafer of MIMC regarding delivery of TCRA financial assurance instruments to EPA on 11/19/2010			
1/4/2011	Letter to V. Leos of USEPA from MIMC counsel regarding force majeure event			
1/4/2011	Letter to V. Leos of USEPA from IP counsel joining in MIMC's letter dated 1/4/2011 regarding force majeure event			
1/4/2011	Memorandum to V. Leos of USEPA on the Evaluation of the Potential Change in Water Surface Elevation Due to the Placement of the Capping Remedy			
		1/4/2011	Letter to MIMC from V. Leos of USEPA regarding financial assurance	
1/5/2011	Letter to EPA from IP counsel on behalf of Respondents regarding access issues and notice of force majeure			
		Undated	Letter to Respondents' Project Coordinator from V. Leos regarding USEPA's site inspection of December 8, 2010 and upcoming scheduled work activities. The letter was received on 1/6/2011.	
		1/6/2011	Email to D. Shafer of MIMC from B. Werner of USEPA regarding need for duplicates of TCRA financial assurance instruments	
1/6/2011	Email from D. Shafer of MIMC on behalf of Respondents regarding Site signs and buoys and intent to inspect fencing and signs on 1/7/2011			
		1/7/2011	Email from V. Leos of USEPA stating that representatives from Harris County and TCEQ and himself would be visiting the Site on 1/7/2011	
1/10/2011	TCRA Weekly Progress Report 009 email from J. Laplante to V. Leos and five hard copies			

Table of Agency TCRA Communications

Respondents Submittal Date	Respondents Communication Summary	Response from USEPA Date	USEPA Communication Summary	Notes
1/12/2011	Email to B. Nann of USEPA from MIMC's counsel on behalf of Respondents regarding TxDOT and Big Star access issues and Big Star's prospective status as a PRP	1/13/2011	Email from B. Nann of USEPA to Respondents' counsel (in response to 1/12/2011 email from MIMC's counsel) regarding TxDOT negotiations, alternative laydown area, and Big Star's status as PRP	
1/13/2011	Email from IP's counsel to B. Nann of USEPA responding to her 1/13/2011 email regarding TxDOT access negotiations	1/14/2011	Email from B. Nann of USEPA to Respondents' counsel responding to 1/13/2011 email from IP's counsel regarding TxDOT access negotiations	
		1/13/2011	Email from B. Nann of USEPA to Respondents' counsel (responding to 1/12/2011 email from MIMC's counsel) addressing "ability to pay" issue for Big Star	
		1/14/2011	Email from B. Nann of USEPA to Respondents' counsel transmitting USEPA letter regarding Notice of Violation	
1/17/2011	TCRA Weekly Progress Report 010 email from J. Laplante to V. Leos and five hard copies			
		1/19/2011	Email from B. Nann of USEPA regarding need to coordinate with USEPA regarding additional plans on TxDOT right-of-way	
1/19/2011	Email from MIMC counsel on behalf of Respondents to B. Nann of USEPA responding to her email of 1/19/2011 regarding additional plans for TxDOT right-of-way			
1/19/2011	Email from Respondents' Project Coordinator to USEPA and Respondents' counsel regarding her telephone conference with V. Leos of USEPA regarding proposed plans for the TxDOT right-of-way and intent to submit amendment to §404(b)(1) documentation.			
		1/21/2011	Email from B. Nann of USEPA to Respondents' counsel forwarding USEPA's 1/21/2011 NOV letter.	
1/24/2011	TCRA Weekly Progress Report 011 email from J. Laplante to V. Leos and five hard copies.			
		1/24/2011	Notice of Violation letter from USEPA regarding non-compliance with the TCRA AOC	
		1/24/2011	Email from B. Nann of USEPA to Respondents' counsel forwarding USEPA's 1/24/11 NOV letter.	
		1/24/2011	Email from V. Leos of USEPA to Respondents' Project Coordinator regarding need to coordinate all communications through B. Nann of USEPA.	
1/25/2011	Email from Respondents' Project Coordinator to V. Leos and B. Nann of USEPA regarding resolution of TxDOT access issue and desire to meet with USEPA regarding project schedule.			
1/26/2011	Follow-up email from Respondents' Project Coordinator to V. Leos and B. Nann of USEPA regarding desire to meet with USEPA to discuss project schedule.	1/26/2011	Email from B. Nann of USEPA stating that V. Leos would respond to the email of Respondents' Project Coordinator when he returns to his office.	
		1/27/2011	Email from V. Leos of USEPA to Respondents' Project Coordinator stating willingness of himself and B. Nann of USEPA to meet to discuss schedule.	
1/27/2011	Submitted to USEPA supplemental 401, 404(b)(1) and coastal consistency determinations to reflect changed conditions related to laydown, stockpiling, and truck turnaround areas in the TxDOT right-of-way on January 27, 2011.			
1/27/2011	Letter from Respondents to CAC members regarding Site status update.			

Table of Agency TCRA Communications

Respondents Submittal Date	Respondents Communication Summary	Response from USEPA Date	USEPA Communication Summary	Notes
1/27/2011	Email from Respondents' Project Coordinator to USEPA notifying USEPA of the posting of an Addendum regarding Site Access Modifications and a Cultural Resources Addendum to the FTP Site.			
		1/27/2011	Email from V. Leos of USEPA to Respondents' Project Coordinator stating that until USEPA approves modification to Site Plans, Respondents must continue to follow existing work plan.	
		1/28/2011	Email from V. Leos of USEPA clarifying his 1/27/2011 email and stating that USEPA's reviews of Respondents' revised plans do not impede Respondents' ability to continue work at Site.	
1/28/2011	Email from Respondents' Project Coordinator to USEPA regarding meeting with USEPA on 1/31/2011, including attendees and agenda.	1/28/2011	Email from V. Leos of USEPA asking that "water access/barge needed for eastern pit" be added to agenda for 1/31/11 meeting.	
1/28/2011	Email from Respondents' Project Coordinator to V. Leos of USEPA confirming addition to agenda.			
1/28/2011	Letter from MIMC's counsel on behalf of Respondents to USEPA regarding supplement to Respondents' force majeure claims.			
		1/28/2011	Email from B. Nann of USEPA to Respondents and members of CAC regarding status of Site.	
		1/28/2011	Email from B. Nann of USEPA to Respondents' counsel seeking confirmation that no attorneys would be at 1/31/2011 meeting with L. Starfield and S. Coleman of USEPA.	
1/28/2011	Email from IP counsel to B. Nann of USEPA stating his understanding that no counsel would be present at 1/31/2011 meeting.			
1/31/2011	TCRA Weekly Progress Report 012 email from J. Laplante to V. Leos and five hard copies.			
1/31/2011	Letter from D. Keith to V. Leos and B. Nann requesting review and approval of attached revised TCRA construction schedule; reiterating request for review and approval of 401/404(b)(1) documentation relating to changes in TxDOT access, and requesting clarification on future communications between Respondents and USEPA.			
1/31/2011	Email from MIMC counsel to B. Nann of USEPA regarding planned attendees for 1/31/2011 meeting with L. Starfield, et al. of ESEPA.			
1/31/2011	Email from MIMC counsel to B. Nann of USEPA regarding lack of attendance of legal counsel at USEPA meeting regarding TCRA schedule.	1/31/2011	Emails from B. Nann of USEPA regarding 1/31/2011 meeting regarding TCRA schedule and attendance of legal counsel	
2/1/2011	USA Environment submittals 1, 2, and 3 (geotextiles and geomembrane) transmitted via email from J. Laplante to V. Leos and B. Nann.			
2/2/2011	USA Environment submittals 4 and 5 (CHASP and geotextile) transmitted via email from J. Laplante to V. Leos and B. Nann.			

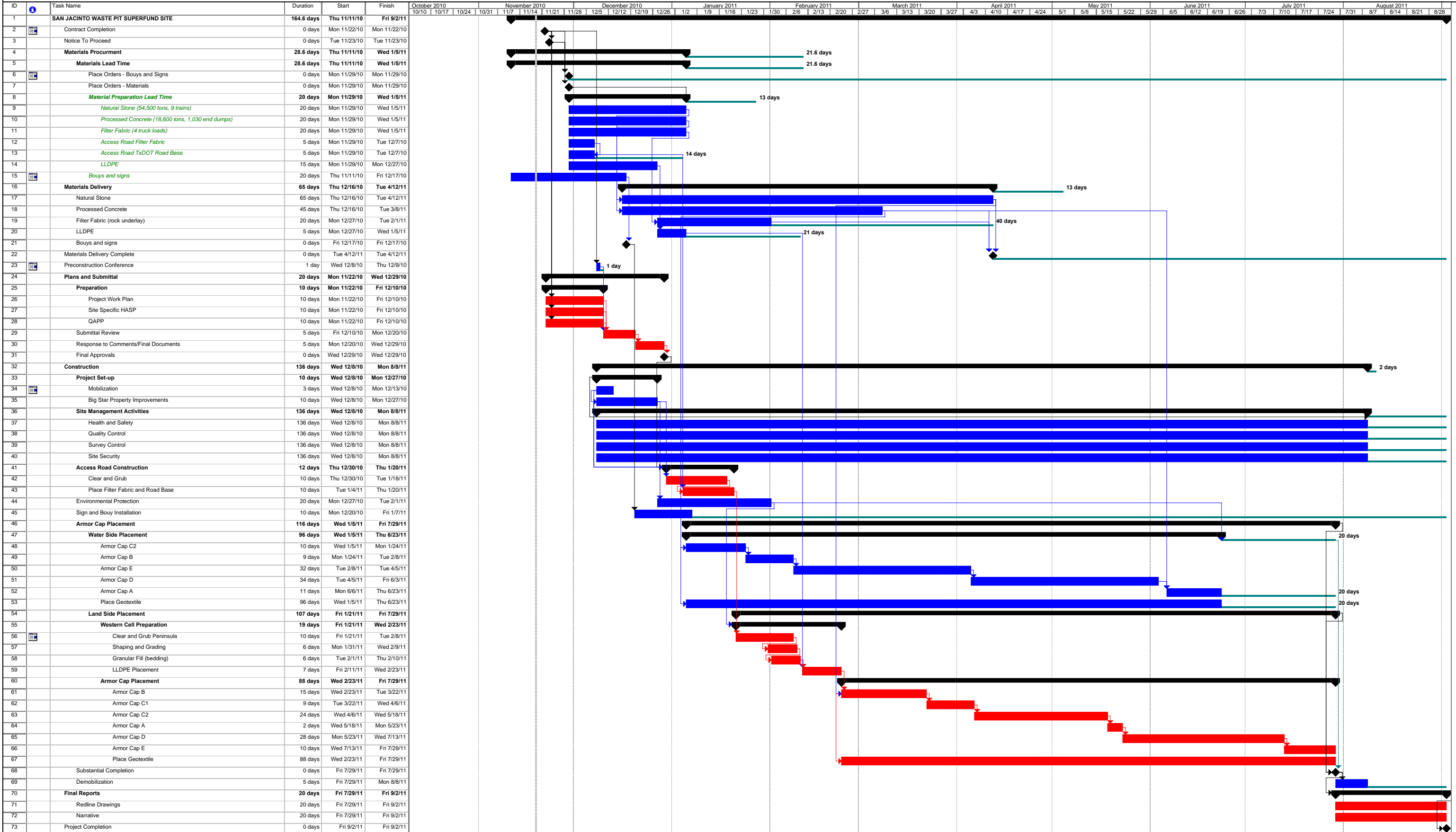
Table of Agency TCRA Communications

Respondents Submittal Date	Respondents Communication Summary	Response from USEPA Date	USEPA Communication Summary	Notes
2/3/2011	USA Environment submittals 6, 7, 8 and 9 (partial stone chemistry results; Armor Cap C and D gradation curves, list of subcontractors) transmitted via 2 emails from J. Laplante to V. Leos and B. Nann.			
2/4/2011	USA Environment submittals 10 and 11 (CWP, EPP, SWPPP) transmitted via email from J. Laplante to V. Leos and B. Nann.			
2/4/2011	Revised RAWP document transmitted via email from J. Laplante to V. Leos and B. Nann for review.			
2/7/2011	TCRA Weekly Progress Report 013 email from J. Laplante to V. Leos and five hard copies.			
2/8/2011	Copy of Market Street and LaBarge Site Lease Agreements sent via email and hard copy from J. Laplante to V. Leos and B. Nann.			
2/8/2011	Notification of TCRA subcontractors letter sent by email and hard copy from J. Laplante to V. Leos and B. Nann.			
		2/10/2011	Letter from USEPA V. Leos to D. Keith requesting that TCRA Weekly Updates include a copy of the approved TCRA Schedule instead of the proposed revised TCRA schedule.	
		2/10/2011	Letter from USEPA V. Leos to D. Keith approving Addendum Regarding Site Access Modifications, subject to additional clarifying text proposed by USEPA to be included in the Addendum.	
		2/10/2011	Letter from USEPA V. Leos to D. Keith requesting specific additional detail be provided in the proposed revised TCRA schedule.	
2/10/2011	Email to V. Leos of USEPA from D. Shafer of MIMC, on behalf of Respondents, regarding proposed Administration Site signs.	2/11/2011	Email from V. Leos of USEPA to Respondents approving Administration Site signs.	
2/11/2011	Minutes from February 4, 2011 USEPA Weekly Update teleconference sent via email from J. Laplante to V. Leos and B. Nann.			
2/14/2011	TCRA Weekly Progress Report 014 email from J. Laplante to V. Leos and B. Nann and five hard copies.			
2/14/2011	Letter from MIMC counsel, on behalf of Respondents, to USEPA regarding notice of dispute relative to USEPA's January 14, 2011, Notice of Violation.	2/16/2011	Email from B. Nann of USEPA to Respondents' counsel transmitting USEPA's response to Respondents' force majeure claim.	
2/14/2011	J. Laplante submitted TCRA Detailed Schedule to V. Leos and B. Nann.			
2/15/2011	J. Laplante submitted to V. Leos and B. Nann information on Exclusion Zone and Restricted Zone as developed by Respondents' contractor USA Environment.			
		2/16/2011	Email from B. Nann of USEPA to Respondents' counsel regarding Respondents' notice of dispute relative to January 14, 2011, Notice of Violation.	
2/18/2011	J. Laplante submitted to V. Leos and B. Nann contact information for the Channelview Volunteer Fire Department via email.			

Table of Agency TCRA Communications

Respondents Submittal Date	Respondents Communication Summary	Response from USEPA Date	USEPA Communication Summary	Notes
2/18/2011	J. Laplante submitted to V. Leos and B. Nann a draft Emergency Contingency Plan, as requested by USEPA, via email.			

SAN JACINTO RIVER WASTE PITS SUPERFUND SITE



**-REVISED SCHEDULE-
SAN JACINTO RIVER WASTE PITS SUPERFUND SITE**

ID	Task Name	Duration	Start	Finish	Per Cent Complete	October	November	December	January	February	March	April	May	June	July	August	September
1	SAN JACINTO WASTE PIT SUPERFUND SITE	179 days	Thu 11/11/10	Thu 9/29/11	24%												
2	Contract Completion	0 days	Thu 12/2/10	Thu 12/2/10	100%												
3	Notice To Proceed	0 days	Fri 12/3/10	Fri 12/3/10	100%												
4	Access and Lease Properties	16 days	Tue 1/4/11	Tue 2/1/11	100%												
5	Management Location	9.6 days	Fri 1/14/11	Tue 2/1/11	100%												
6	Negotiate Lease	3 days	Fri 1/14/11	Wed 1/19/11	100%												
7	Management Location Lease Signed	0 days	Thu 1/20/11	Thu 1/20/11	100%												
8	Management Location Occupy Site	0 days	Tue 2/1/11	Tue 2/1/11	100%												
9	La Barge	16 days	Tue 1/4/11	Tue 2/1/11	100%												
10	Negotiate Lease	14 days	Tue 1/4/11	Thu 1/27/11	100%												
11	La Barge Location Lease Signed	0 days	Thu 1/27/11	Thu 1/27/11	100%												
12	La Barge Location Occupy Site	0 days	Tue 2/1/11	Tue 2/1/11	100%												
13	TxDOT ROW	0 days	Mon 1/24/11	Mon 1/24/11	100%												
14	Access Agreement Signed	0 days	Mon 1/24/11	Mon 1/24/11	100%												
15	Materials Procurement	102.8 days	Thu 11/11/10	Mon 5/16/11	62%												
16	Materials Lead Time	52.8 days	Thu 11/11/10	Wed 2/16/11	100%												
17	Place Orders - Bouys and Signs	0 days	Thu 11/11/10	Thu 11/11/10	100%												
18	Place Orders - Materials	0 days	Thu 11/11/10	Thu 11/11/10	100%												
19	Material Preparation Lead Time	40 days	Tue 12/7/10	Wed 2/16/11	100%												
20	Natural Stone (36,800 tons, 6 trains)	20 days	Tue 12/7/10	Wed 1/12/11	100%												
21	Processed Concrete (2-4,800 tons, 1,240 end dumps)	20 days	Tue 12/7/10	Wed 1/12/11	100%												
22	Filter Fabric (4 truck loads)	7 days	Tue 12/7/10	Fri 12/17/10	100%												
23	Access Road Filter Fabric	7 days	Tue 12/7/10	Fri 12/17/10	100%												
24	Access Road TxDOT Road Base	5 days	Tue 12/7/10	Wed 12/15/10	100%												
25	LLDPE	40 days	Tue 12/7/10	Wed 2/16/11	100%												
26	Bouys and signs	20 days	Thu 11/11/10	Fri 12/17/10	100%												
27	Materials Delivery	58 days	Thu 2/3/11	Mon 5/16/11	20%												
28	Natural Stone	50 days	Thu 2/17/11	Mon 5/16/11	35%												
29	Processed Concrete	50 days	Thu 2/17/11	Mon 5/16/11	0%												
30	Filter Fabric (rock underlay)	5 days	Thu 2/3/11	Fri 2/11/11	100%												
31	LLDPE	5 days	Thu 2/17/11	Fri 2/25/11	0%												
32	Bouys and signs Delivery	3 days	Mon 12/20/10	Thu 12/23/10	100%												
33	Materials Delivery Complete	0 days	Mon 5/16/11	Mon 5/16/11	0%												
34	Preconstruction Conference	1 day	Thu 12/16/10	Fri 12/17/10	100%												
35	Plans and Submittal	30 days	Tue 12/21/10	Mon 2/14/11	100%												
36	Preparation	20 days	Tue 12/21/10	Wed 1/26/11	100%												
37	Project Work Plan	20 days	Tue 12/21/10	Wed 1/26/11	100%												
38	Site Specific HASP	20 days	Tue 12/21/10	Wed 1/26/11	100%												
39	SWPPP	20 days	Tue 12/21/10	Wed 1/26/11	100%												
40	QAPP	20 days	Tue 12/21/10	Wed 1/26/11	100%												
41	Submittal Review	5 days	Thu 1/27/11	Fri 2/4/11	100%												
42	Response to Comments/Final Documents	5 days	Fri 2/4/11	Mon 2/14/11	100%												
43	Final Approvals	0 days	Mon 2/14/11	Mon 2/14/11	100%												
44	Construction	141 days	Thu 12/23/10	Thu 9/1/11	7%												
45	Project Set-up	10 days	Tue 2/1/11	Thu 2/17/11	78%												
46	Mobilization	3 days	Tue 2/1/11	Fri 2/4/11	100%												
47	Property Upgrade/Site Setup	10 days	Tue 2/1/11	Thu 2/17/11	78%												
48	Management Location	10 days	Tue 2/1/11	Thu 2/17/11	75%												
49	La Barge	10 days	Tue 2/1/11	Thu 2/17/11	75%												
50	Site Management Activities	120 days	Tue 2/1/11	Wed 8/31/11	5%												
51	Health and Safety	120 days	Tue 2/1/11	Wed 8/31/11	5%												
52	Quality Control	120 days	Tue 2/1/11	Wed 8/31/11	5%												
53	Survey Control	120 days	Tue 2/1/11	Wed 8/31/11	5%												
54	Site Security	120 days	Tue 2/1/11	Wed 8/31/11	5%												
55	Access Road Construction	18 days	Wed 1/26/11	Fri 2/25/11	56%												
56	TxDOT ROW Survey	6 days	Wed 1/26/11	Fri 2/4/11	100%												
57	Clear and Grub	10 days	Wed 2/2/11	Fri 2/18/11	75%												
58	Place Filter Fabric and Road Base	10 days	Wed 2/9/11	Fri 2/25/11	10%												
59	Environmental Protection	40 days	Wed 2/2/11	Tue 4/12/11	15%												
60	Sign and Bouy Installation	6 days	Thu 12/23/10	Thu 1/6/11	100%												
61	Armor Cap Placement (See Note 1 Below for Discussion of Placement Sequence)	105.8 days	Thu 2/17/11	Wed 8/24/11	0%												
62	Water Side Placement	105 days	Thu 2/17/11	Tue 8/23/11	0%												
63	Armor Cap D	57 days	Thu 2/17/11	Fri 5/27/11	0%												
64	Armor Cap D24	2 days	Fri 5/27/11	Thu 6/2/11	0%												
65	Armor Cap A	23 days	Thu 6/2/11	Wed 7/13/11	0%												
66	Armor Cap B/C	2 days	Thu 7/14/11	Mon 7/18/11	0%												
67	Armor Cap C	21 days	Mon 7/18/11	Tue 8/23/11	0%												
68	Place Geotextile	105 days	Thu 2/17/11	Tue 8/23/11	0%												
69	Land Side Placement	101 days	Fri 2/25/11	Wed 8/24/11	0%												
70	Western Cell Preparation	21 days	Fri 2/25/11	Mon 4/4/11	0%												
71	Clear and Grub Peninsula	10 days	Fri 2/25/11	Tue 3/15/11	0%												
72	Shaping and Grading	6 days	Mon 3/7/11	Thu 3/17/11	0%												
73	Granular Fill (bedding)	6 days	Fri 3/11/11	Tue 3/22/11	0%												
74	LLDPE Placement	7 days	Wed 3/23/11	Mon 4/4/11	0%												
75	Armor Cap Placement	80 days	Mon 4/4/11	Wed 8/24/11	0%												
76	Armor Cap B/C	36 days	Mon 4/4/11	Tue 6/7/11	0%												
77	Armor Cap D24	6 days	Tue 6/7/11	Fri 6/17/11	0%												
78	Armor Cap D	11 days	Fri 6/17/11	Thu 7/7/11	0%												
79	Armor Cap C	15 days	Fri 7/8/11	Wed 8/3/11	0%												
80	Armor Cap A	12 days	Wed 8/3/11	Wed 8/24/11	0%												
81	Place Geotextile	80 days	Mon 4/4/11	Wed 8/24/11	0%												
82	Substantial Completion	0 days	Wed 8/24/11	Wed 8/24/11	0%												
83	Demobilization	5 days	Wed 8/24/11	Thu 9/1/11	0%												
84	Final Reports	20 days	Wed 8/24/11	Thu 9/29/11	0%												
85	Redline Drawings	20 days	Wed 8/24/11	Thu 9/29/11	0%												
86	Narrative	20 days	Wed 8/24/11	Thu 9/29/11	0%												
87	Project Completion	0 days	Thu 9/29/11	Thu 9/29/11	0%												

Note: Sequencing of the Armor Cap placement will be determined in the field based upon current site and weather conditions.