

April 14, 2011

Portage Creek

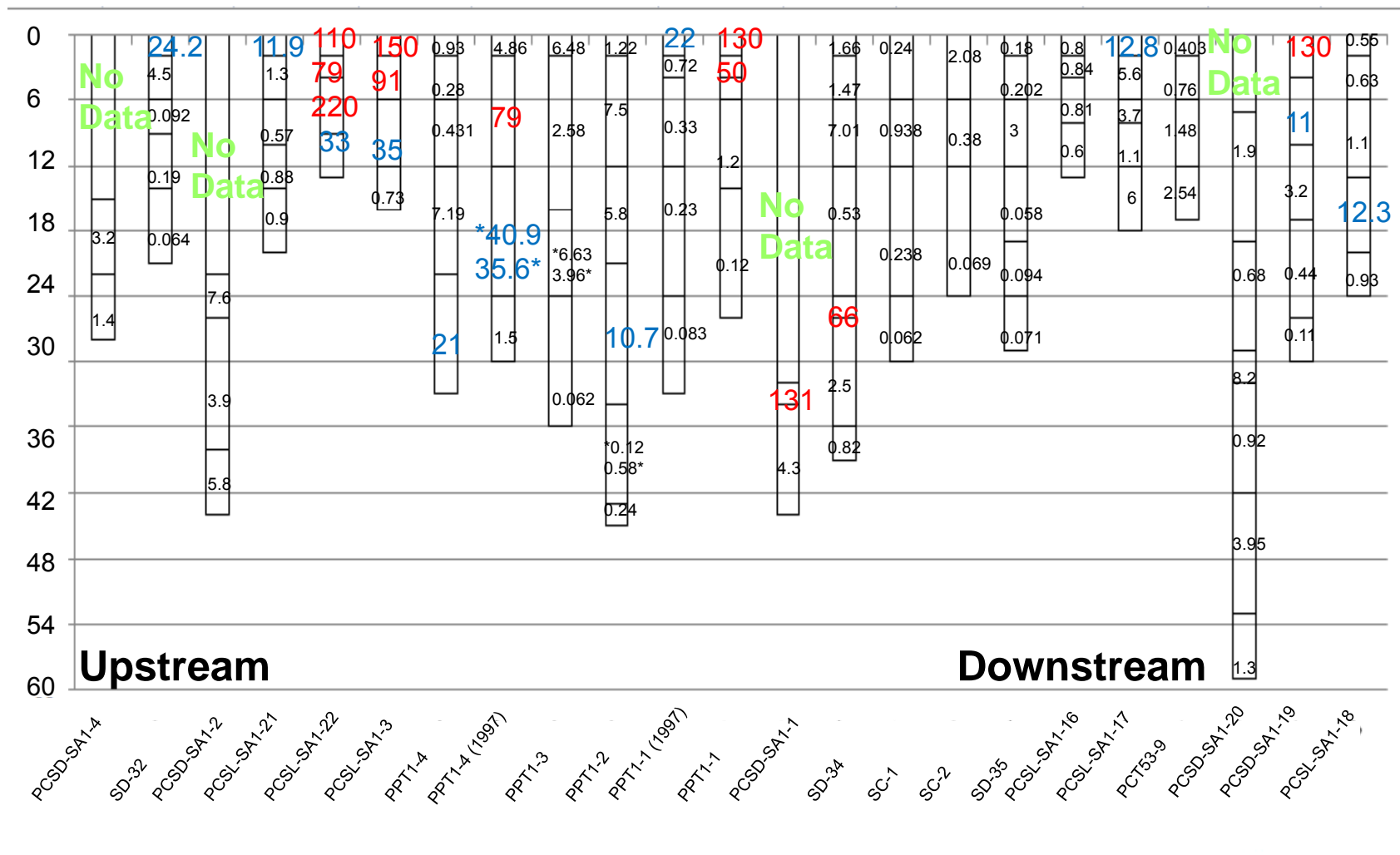
Core Displays of PCB Concentrations

Data Source Document:

D:\KC_Projects\PortageCr_data\portage_creek\Portage_Creek_analysis\
Spreadsheets\PCB_SA_Cross_Sections_and_Depths.xls

Cross-Section: PCB Concentration (ppm) and Depth (inches) Intervals in Remediation Polygon SA1-A (MDNRE SA1)

(Data summary from
1994, 1997, 2008 &
2010 data sets.)

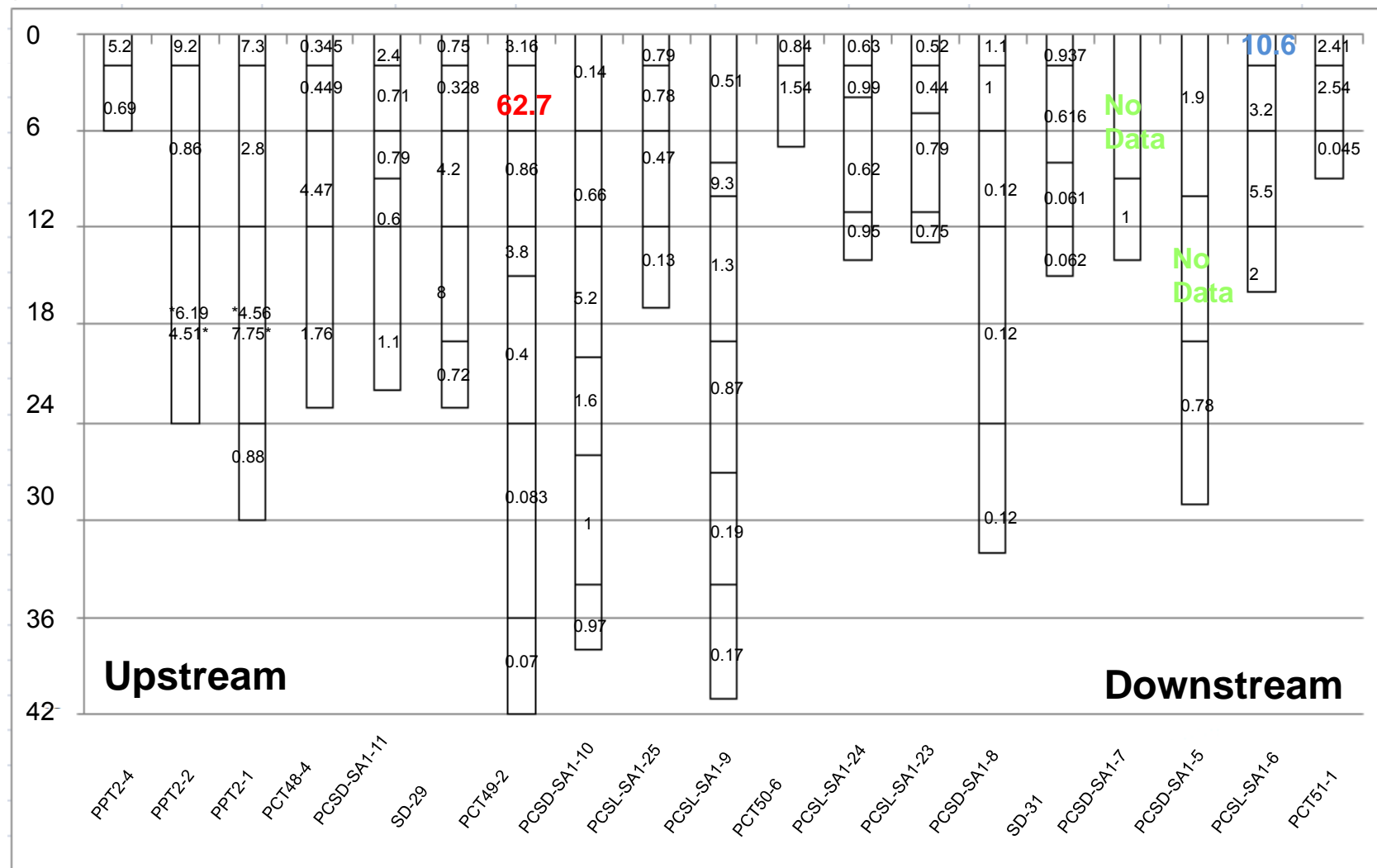


*NOTE:
PPT1-4 (1997), PPT1-3, and PPT1-2 contained
two samples at the same depth; both
concentration values are included on the graph.

Intervals with Black Label: PCB Concentration < 10 ppm
Intervals with Blue Label: PCB Concentration between 10 – 49.99 ppm
Intervals with Red Label: PCB Concentration ≥ 50 ppm
Intervals with Green Label: No Data

Cross-Section: PCB Concentration (ppm) and Depth (inches) Intervals in Remediation Polygon SA1-B (MDNRE SA1)

(Data summary from 1997,
2008, & 2010 data sets.)

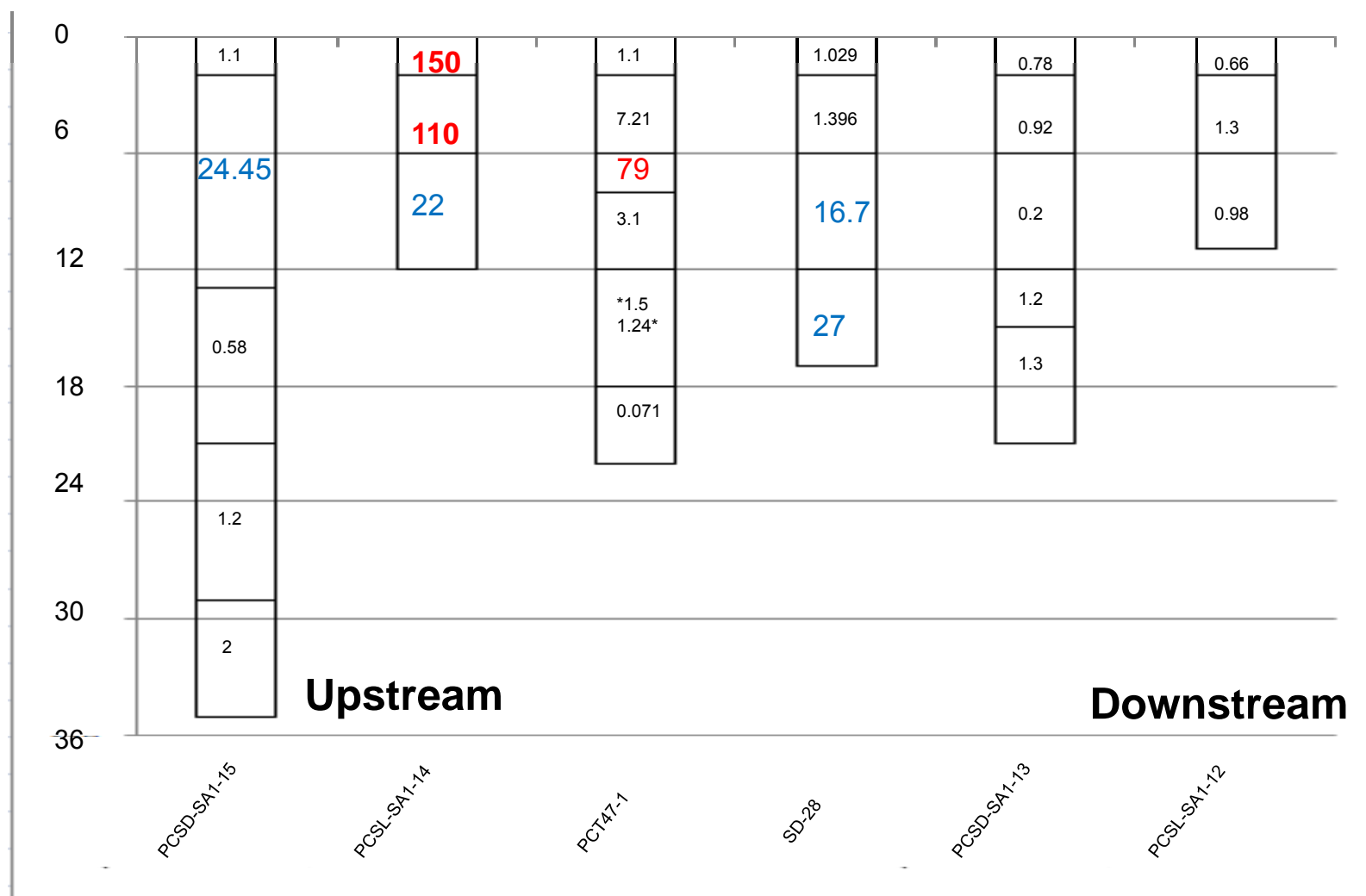
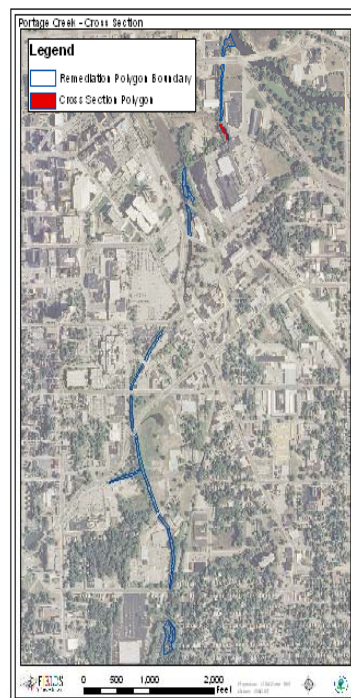


*NOTE:
PPT2-2 and PPT2-1 contained two samples
at the same depth; both concentration
values are included on the graph.

Intervals with Black Label: PCB Concentration < 10 ppm
Intervals with Blue Label: PCB Concentration between 10 – 49.99 ppm
Intervals with Red Label: PCB Concentration ≥ 50 ppm
Intervals with Green Label: No Data

Cross-Section: PCB Concentration (ppm) and Depth (inches) Intervals in Remediation Polygon SA1-C (MDNRE SA1)

(Data summary from
2008 & 2010 data sets.)

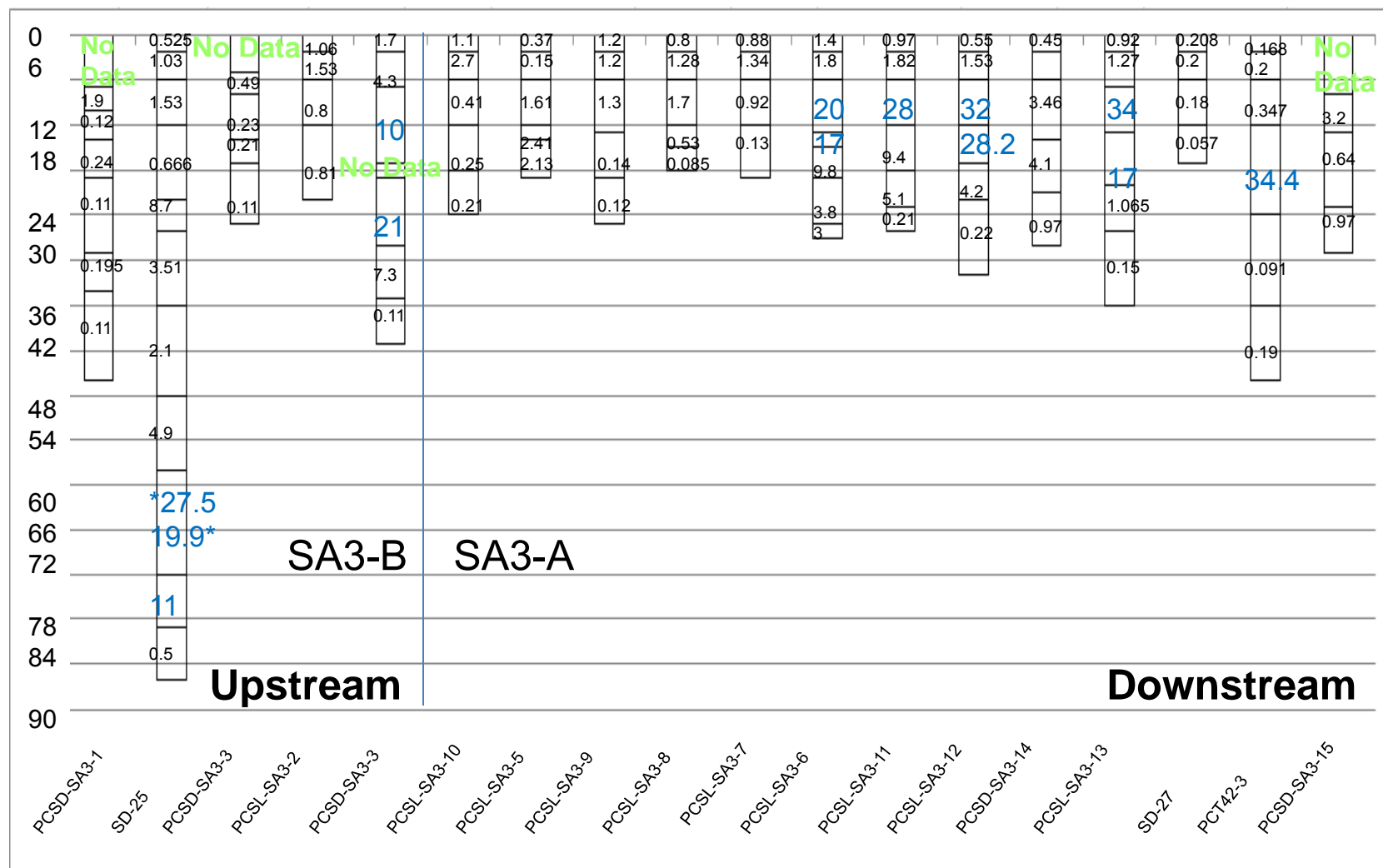
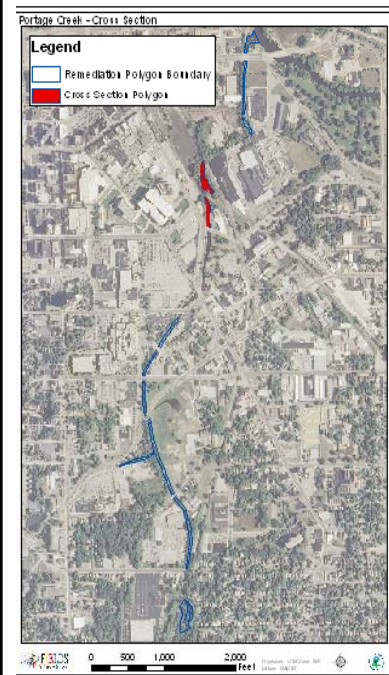


*NOTE:
PCT47-1 contained two samples at
the same depth; both concentration
values are included on the graph.

Intervals with Black Label: PCB Concentration < 10 ppm
Intervals with Blue Label: PCB Concentration between 10 – 49.99 ppm
Intervals with Red Label: PCB Concentration ≥ 50 ppm
Intervals with Green Label: No Data

Cross-Section: PCB Concentration (ppm) and Depth (inches) Intervals in Remediation Polygons SA3-A and B (MDNRE SA3)

(Data summary from
2008 & 2010 data sets.)

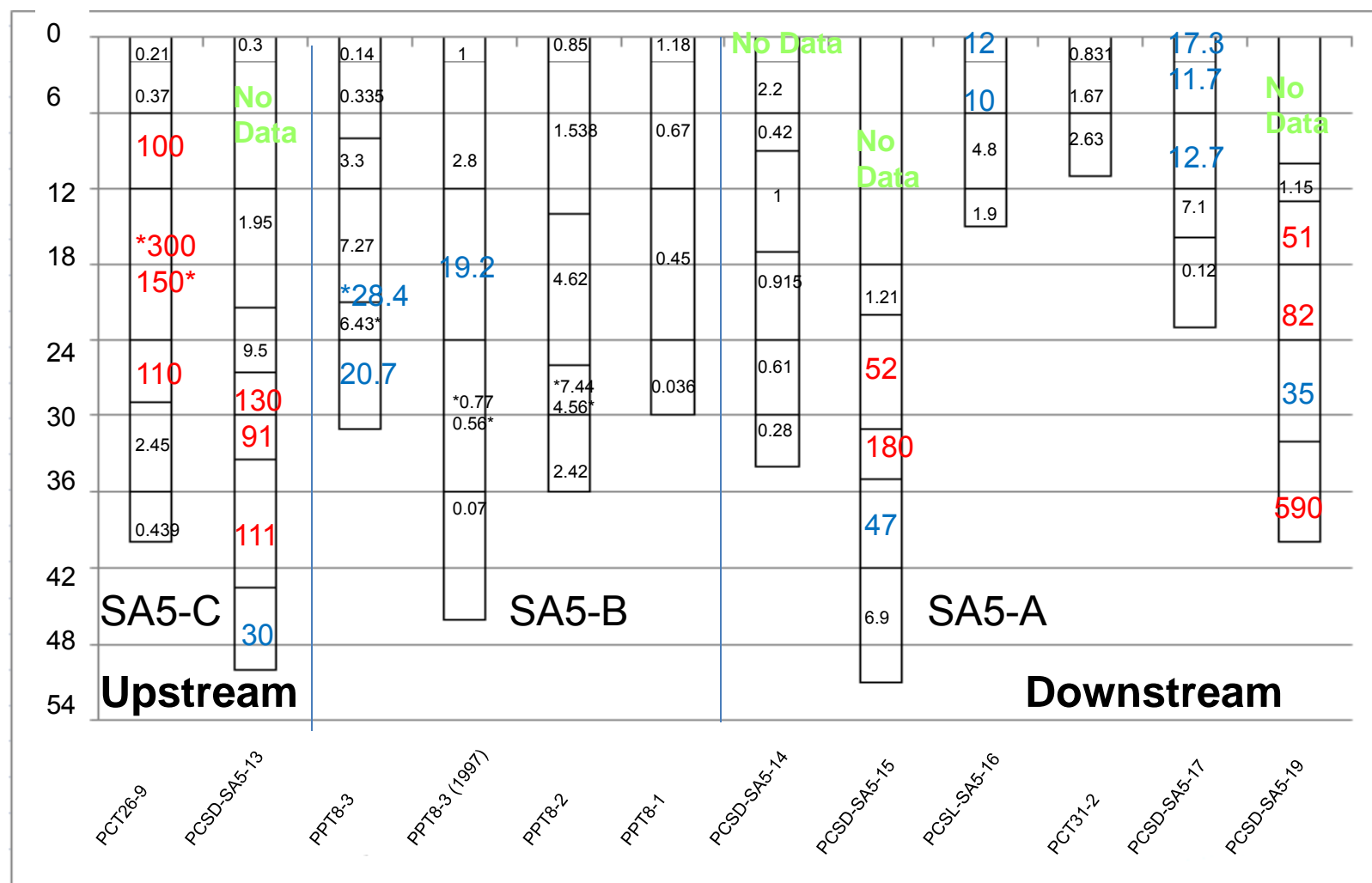
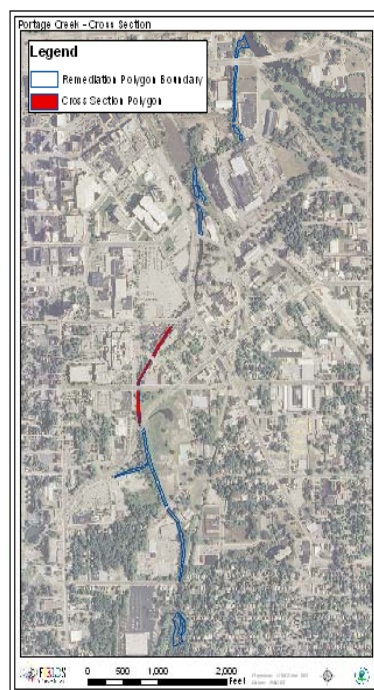


*NOTE:
SD-25 contained two samples at the
same depth; both concentration
values are included on the graph.

Intervals with Black Label: PCB Concentration < 10 ppm
Intervals with Blue Label: PCB Concentration between 10 – 49.99 ppm
Intervals with Red Label: PCB Concentration ≥ 50 ppm
Intervals with Green Label: No Data

Cross-Section: PCB Concentration (ppm) and Depth (inches) Intervals in Remediation Polygons SA5-A, B, and C (MDNRE SA5)

(Data summary from 1997, 2008, & 2010 data sets.)

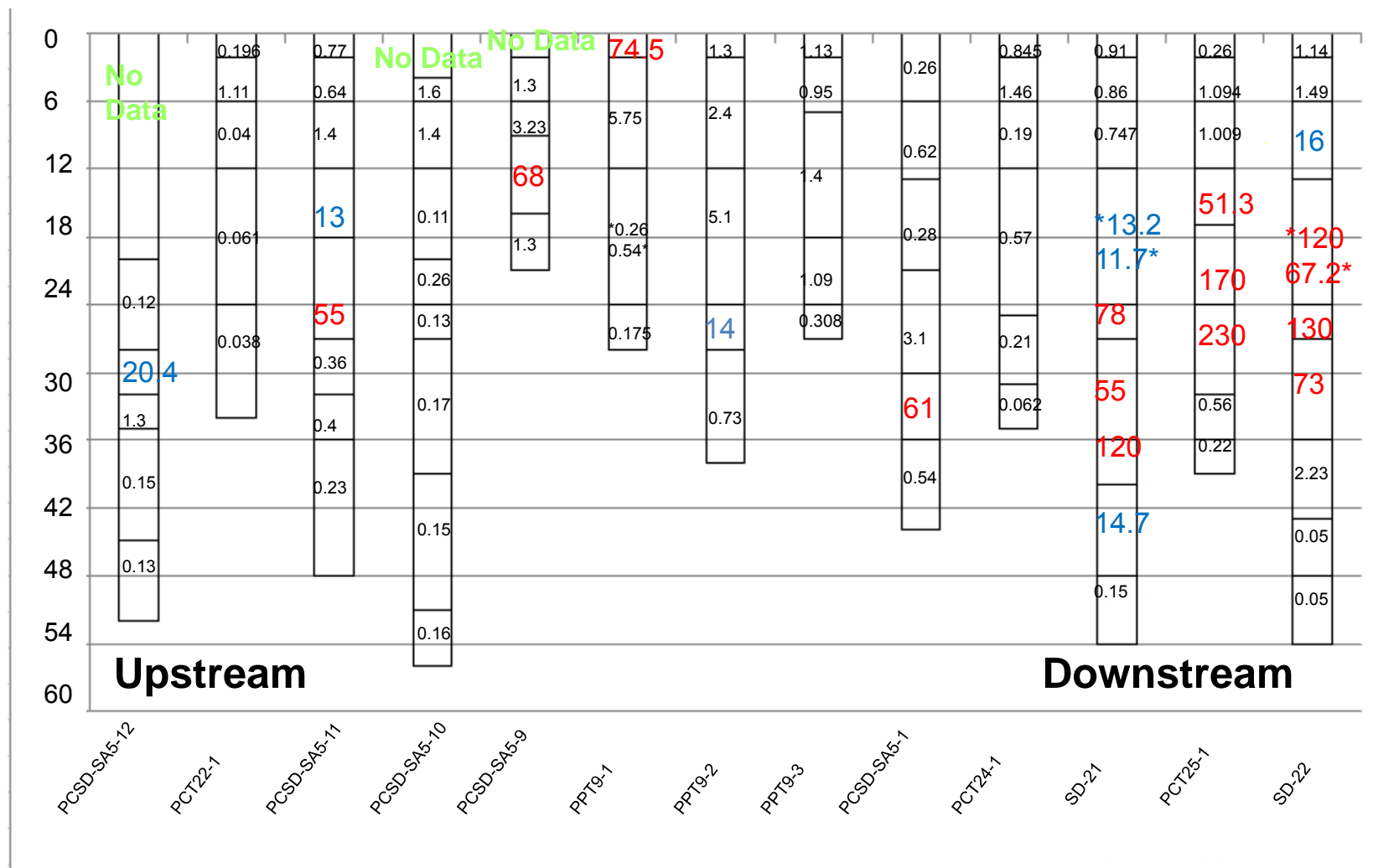


*NOTE: PCT26-9, PPT8-3, PPT8-3 (1997), and PPT8-2 contained two samples at the same depth; both concentration values are included on the graph.

Intervals with Black Label: PCB Concentration < 10 ppm
 Intervals with Blue Label: PCB Concentration between 10 – 49.99 ppm
 Intervals with Red Label: PCB Concentration ≥ 50 ppm
 Intervals with Green Label: No Data

Cross-Section: PCB Concentration (ppm) and Depth (inches) Intervals in Remediation Polygon SA5-D (MDNRE SA5)

(Data summary from 1997, 2008, & 2010 data sets.)

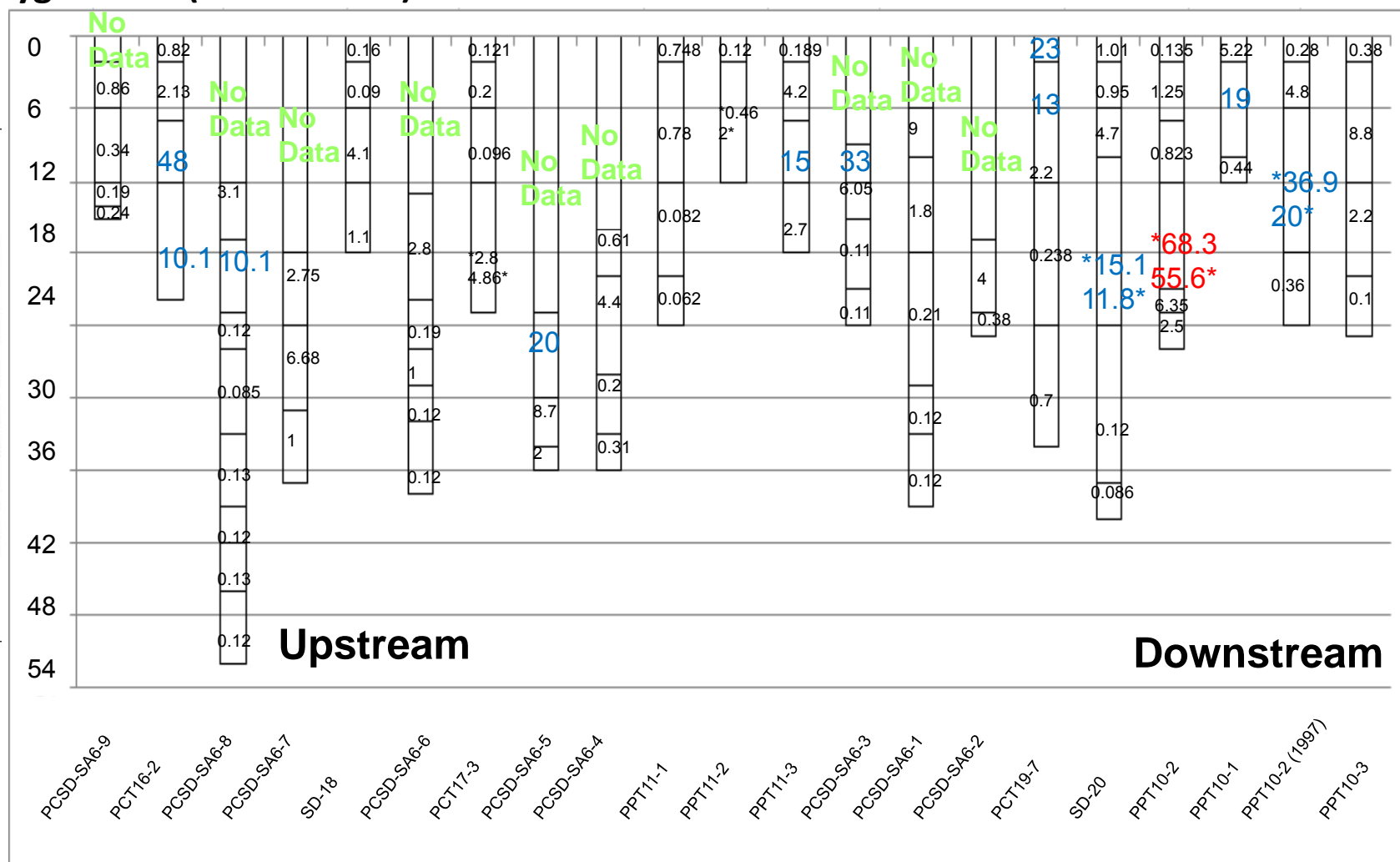


*NOTE:
SD-21, SD-22, and PPT1-1 contained two samples at the same depth; both concentration values are included on the graph.

Intervals with Black Label: PCB Concentration < 10 ppm
Intervals with Blue Label: PCB Concentration between 10 – 49.99 ppm
Intervals with Red Label: PCB Concentration ≥ 50 ppm
Intervals with Green Label: No Data

Cross-Section: PCB Concentration (ppm) and Depth (inches) Intervals in Remediation Polygon SA6 (MDNRE SA6)

(Data summary from 1997, 2008 & 2010 data sets.)

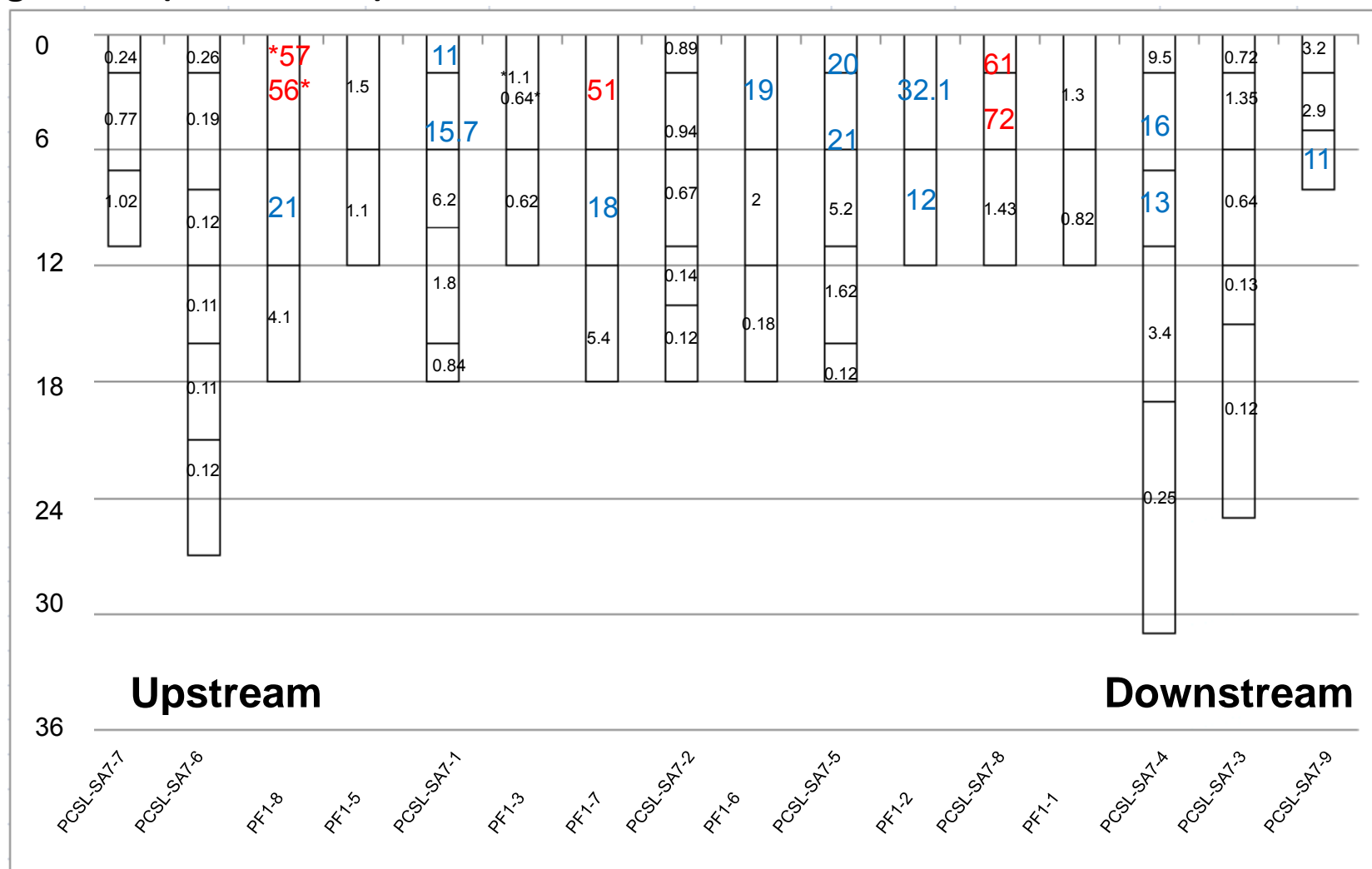


*NOTE: PCT17-3, SD-20, PPT11-2, PPT10-2 and PPT10-2 (1997) contained two samples at the same depth; both concentration values are included on the graph.

Intervals with Black Label: PCB Concentration < 10 ppm
Intervals with Blue Label: PCB Concentration between 10 – 49.99 ppm
Intervals with Red Label: PCB Concentration ≥ 50 ppm
Intervals with Green Label: No Data

Cross-Section: PCB Concentration (ppm) and Depth (inches) Intervals in Remediation Polygon SA7 (MDNRE SA7)

(Data summary from 1993,
1995, 2008 & 2010 data sets.)

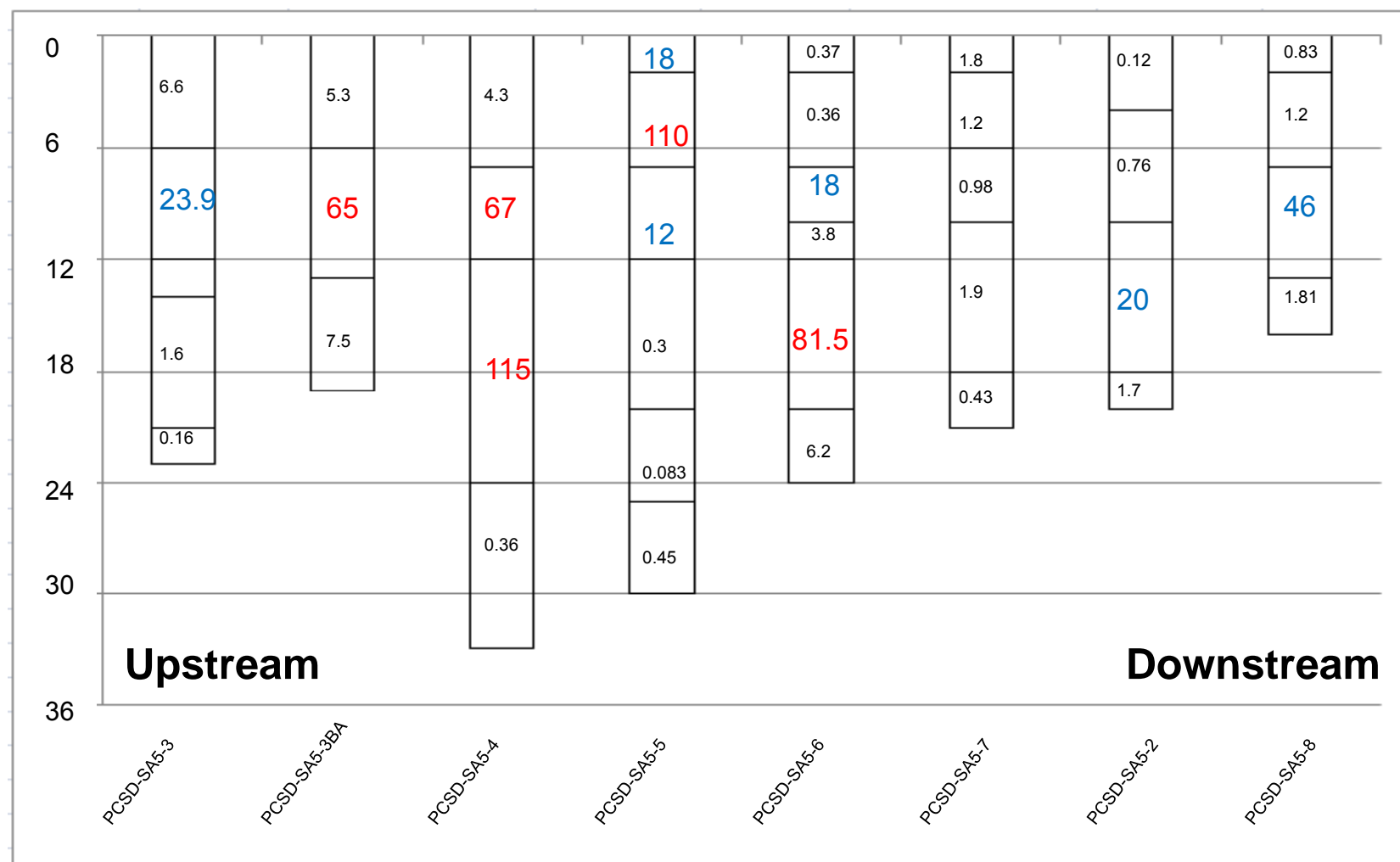


*NOTE: PF1-8 and PF1-3 contained two samples at the same depth; both concentration values are included on the graph.

Intervals with Black Label: PCB Concentration < 10 ppm
 Intervals with Blue Label: PCB Concentration between 10 – 49.99 ppm
 Intervals with Red Label: PCB Concentration ≥ 50 ppm
 Intervals with Green Label: No Data

Cross-Section: PCB Concentration (ppm) and Depth (inches) Intervals in Remediation Polygon Axtell Creek (MDNRE SA5)

(Data summary from
2008 & 2010 data sets.)



Intervals with Black Label: PCB Concentration < 10 ppm
 Intervals with Blue Label: PCB Concentration between 10 – 49.99 ppm
 Intervals with Red Label: PCB Concentration ≥ 50 ppm
 Intervals with Green Label: No Data