

Attachment 3 – Indoor/Ambient Air Sample Collection Log



Indoor Air/Ambient Air Sample Collection Log

Sample ID:		Liebold	
Client:	Marathon	Outdoor/Indoor:	outdoor
Project:	Ambient Air Sampling	Sample Intake Height:	~4'
Location:	Liebold	Tubing Information:	None
Project #:	04085513.02	Miscellaneous Equipment:	
Samplers:	L. Eenigenburg	Time On/Off:	1318 / 1137
Sample Point Location:		Subcontractor:	

Instrument Readings:


Date	Time	Canister Vacuum (a) (inches of Hg)	Temperature (°F)	Relative Humidity (%)	Air Speed (mph)	Barometric Pressure (inches of Hg)	PID (ppb)
7/13/11	1318	30	~78				
7/14/11	1137	4	~75				

(a) Record canister information at a minimum at the beginning and end of sampling

SUMMA Canister Information:

Size (circle one):	1 L 6 L
Canister ID:	1727
Flow Controller ID:	FC0222
Notes:	

General Observations/Notes:

		Indoor Air/Ambient Air Sample Collection Log	
		Sample ID:	I-75
Client:	Marathon	Outdoor/Indoor:	outdoor
Project:	Ambient Air Sampling	Sample Intake Height:	~4'
Location:	I-75	Tubing Information:	None
Project #:	OH085513.02	Miscellaneous Equipment:	
Samplers:	L. Eenigenburg	Time On/Off:	1302 / 1116
Sample Point Location:		Subcontractor:	

Instrument Readings:

Date	Time	Canister Vacuum (a) (inches of Hg)	Temperature (°F)	Relative Humidity (%)	Air Speed (mph)	Barometric Pressure (inches of Hg)	PID (ppb)
7/13/11	1302	27	~78				
7/14/11	1116	15	~75				

(a) Record canister information at a minimum at the beginning and end of sampling

SUMMA Canister Information:

Size (circle one):	1 L 6 L
Canister ID:	2052
Flow Controller ID:	FL0254
Notes:	

General Observations/Notes:



The Chain-of-Custody is a LEGAL DOCUMENT. All relevant fields must be completed accurately.

Section A Required Client Information:		Section B Required Project Information:		Section C Invoice Information:	
Company: <u>Marathon Petroleum</u>		Report To: _____		Attention: _____	
Address: <u>1300 S. Ford St.</u>		Copy To: _____		Company Name: _____	
City: <u>Deer Park, MI 48217</u>		Purchase Order No.: _____		Address: _____	
Email To: <u>afsheen@marathonpetroleum.com</u>		Project Name: <u>1000 W. 1st N. 1000 TC</u>		Face Quote Reference: _____	
Phone: <u>313-997-1024</u>		Project Value: <u>1000 TC</u>		Face Project Manager/Sales Rep: _____	
Fax: <u>313-997-1024</u>		Purchase Order No.: _____		_____	
Email To: <u>afsheen@marathonpetroleum.com</u>		_____		_____	
City: <u>Deer Park, MI 48217</u>		_____		_____	

Section A Required Client Information:		Section B Required Project Information:		Section C Invoice Information:	
Company: <u>Marathon Petroleum</u>		Report To: _____		Attention: _____	
Address: <u>1300 S. Ford St.</u>		Copy To: _____		Company Name: _____	
City: <u>Deer Park, MI 48217</u>		Purchase Order No.: _____		Address: _____	
Email To: <u>afsheen@marathonpetroleum.com</u>		Project Name: <u>1000 W. 1st N. 1000 TC</u>		Face Quote Reference: _____	
Phone: <u>313-997-1024</u>		Project Value: <u>1000 TC</u>		Face Project Manager/Sales Rep: _____	
Fax: <u>313-997-1024</u>		Purchase Order No.: _____		_____	
Email To: <u>afsheen@marathonpetroleum.com</u>		_____		_____	
City: <u>Deer Park, MI 48217</u>		_____		_____	

Attachment 4 – Detailed Weather July 13-14, 2011

Met Stations: DCS Weather

Corridor Origin: Receptor Location

Map Width = 13522.6 (ft) LAT: 42.272609 LON: -83.136137

Manual Met

Wind Speed: 13.6 (mph)

Wind Direction: 357 North

Stability: (4 or D) Neutral

Update Display

Release time: 7/13/2011 2:00:00 PM

	(mph)	deg	[from]	Stability
7/13/2011 2:00:00 PM	Data not available			
7/13/2011 2:05:00 PM	Data not available			
7/13/2011 2:10:00 PM	Data not available			
7/13/2011 2:15:00 PM	Data not available			
7/13/2011 2:20:00 PM	Data not available			
7/13/2011 2:25:00 PM	Data not available			
7/13/2011 2:30:00 PM	13.6	357	4.0	
7/13/2011 2:35:00 PM	10.1	360	3.0	
7/13/2011 2:40:00 PM	9.4	8	3.0	
7/13/2011 2:45:00 PM	7.4	26	2.0	
7/13/2011 2:50:00 PM	7.5	26	2.0	
7/13/2011 2:55:00 PM	9.6	24	2.0	

Quick Response

Met Stations: DCS Weather

Corridor Origin: Receptor Location

Map Width = 13522.6 (ft) LON: -83.143456 LAT: 42.273637

Manual Met

Wind Speed: 7.5 (mph)

Wind Direction: 21 MNE

Stability: (2 or B) Unstable

Update Display

Release time: 7/13/2011 3:00:00 PM

(mph)	deg	[from]	Stability
7/13/2011 3:00:00 PM	7.5	21	2.0
7/13/2011 3:05:00 PM	8.8	41	2.0
7/13/2011 3:10:00 PM	10.3	32	3.0
7/13/2011 3:15:00 PM	11.7	20	3.0
7/13/2011 3:20:00 PM	8.0	28	3.0
7/13/2011 3:25:00 PM	9.4	33	3.0
7/13/2011 3:30:00 PM	7.6	28	2.0
7/13/2011 3:35:00 PM	5.2	30	2.0
7/13/2011 3:40:00 PM	6.4	353	1.0
7/13/2011 3:45:00 PM	9.4	347	2.0
7/13/2011 3:50:00 PM	9.2	351	3.0
7/13/2011 3:55:00 PM	10.0	4	3.0

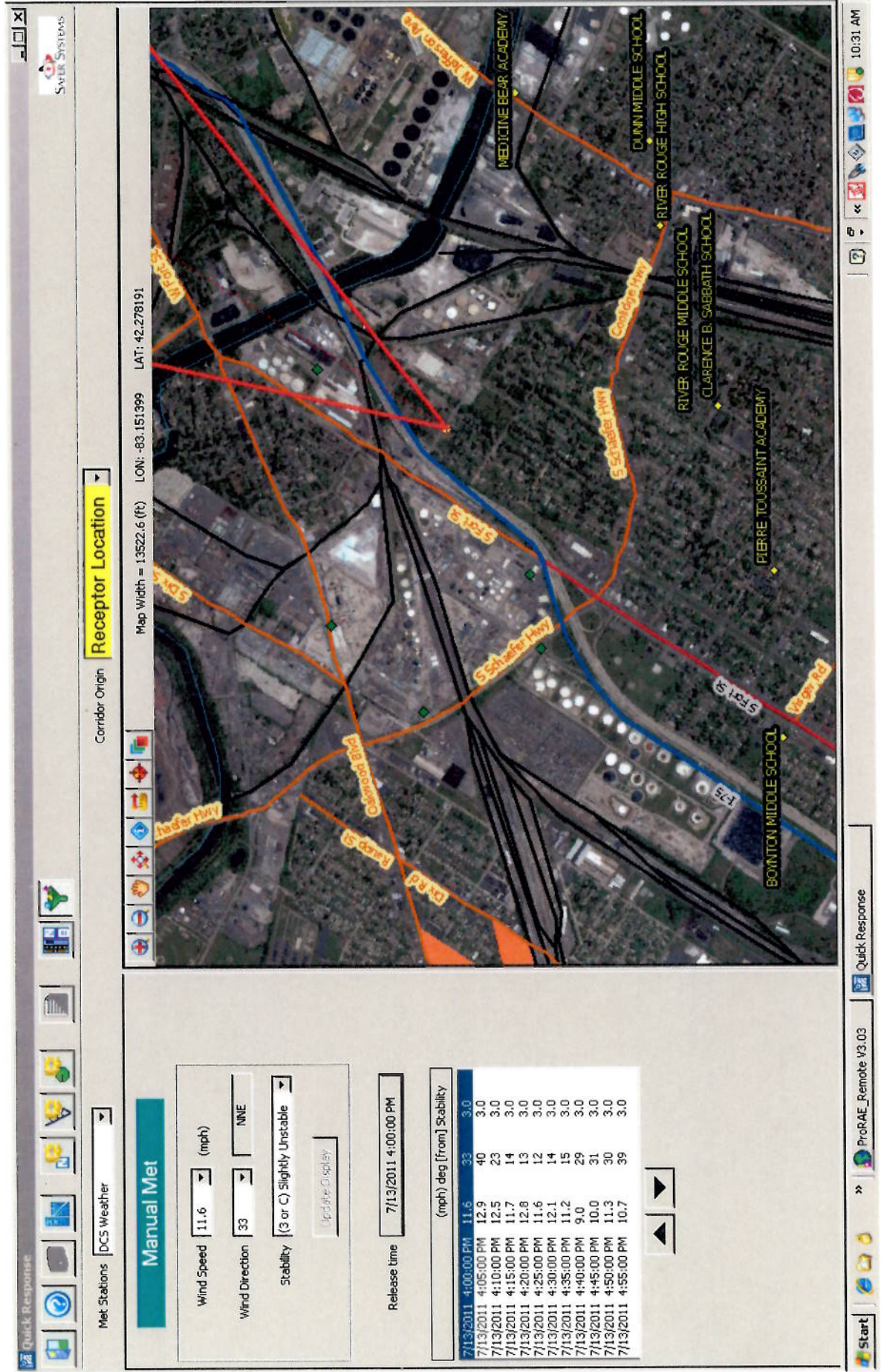
Quick Response

ProRAE_Remote V3.03

Start

10:31 AM

July 13 2011 4:00 pm



Manual Met

Wind Speed: 12.4 (mph)

Wind Direction: 59

Stability: ((3 or C) Slightly Unstable)

Release time: 7/13/2011 5:00:00 PM

(mph)	deg	[from]	Stability
12.4	59	3.0	
12.3	66	3.0	
11.5	52	3.0	
11.5	72	3.0	
13.6	66	3.0	
11.1	71	3.0	
9.9	65	3.0	
10.0	75	3.0	
9.0	71	3.0	
11.1	74	3.0	
12.1	67	4.0	
12.2	72	4.0	

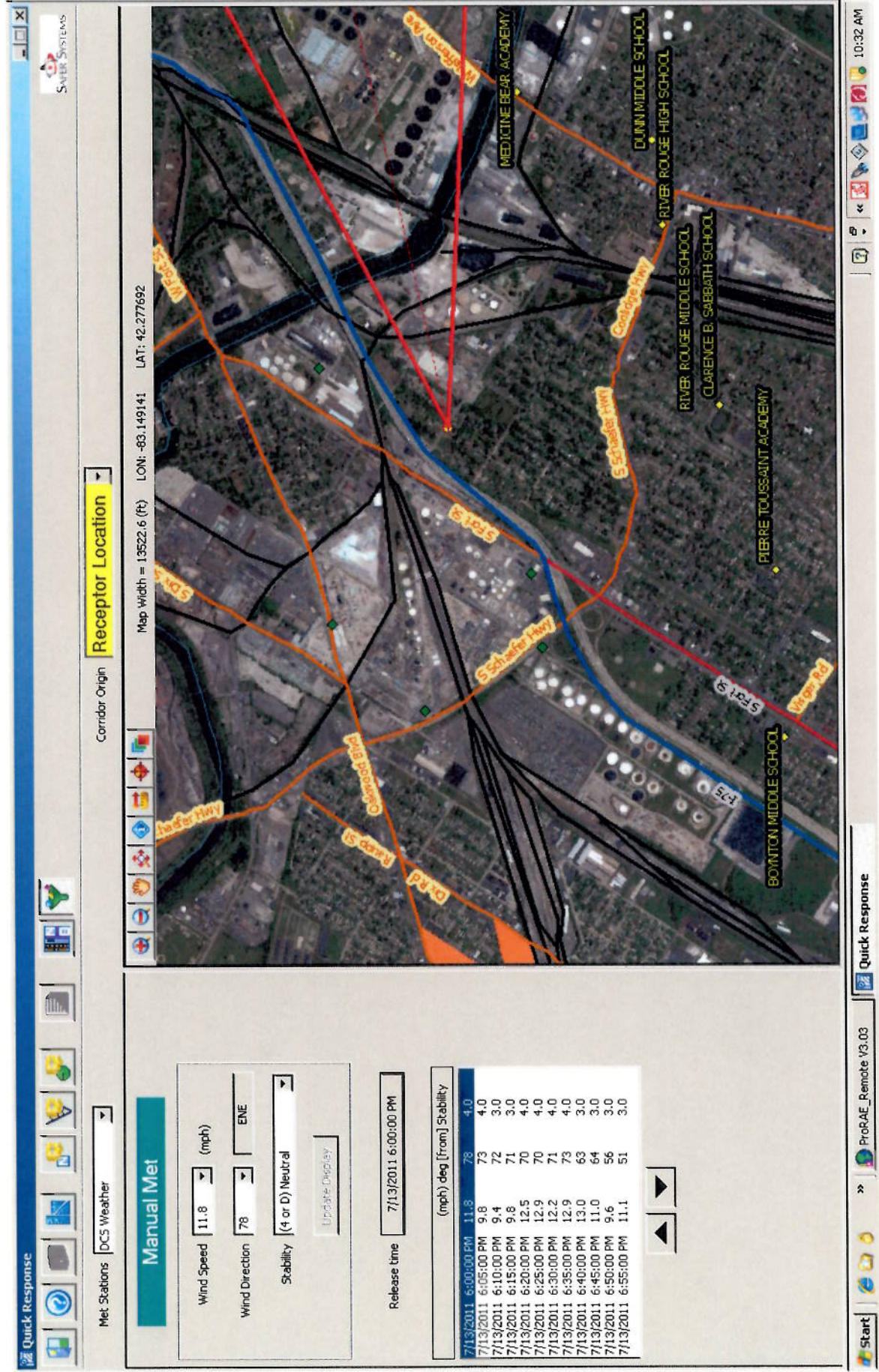
Receptor Location

Corridor Origin

Map Width = 13522.6 (ft) LON: -83.146498 LAT: 42.275786

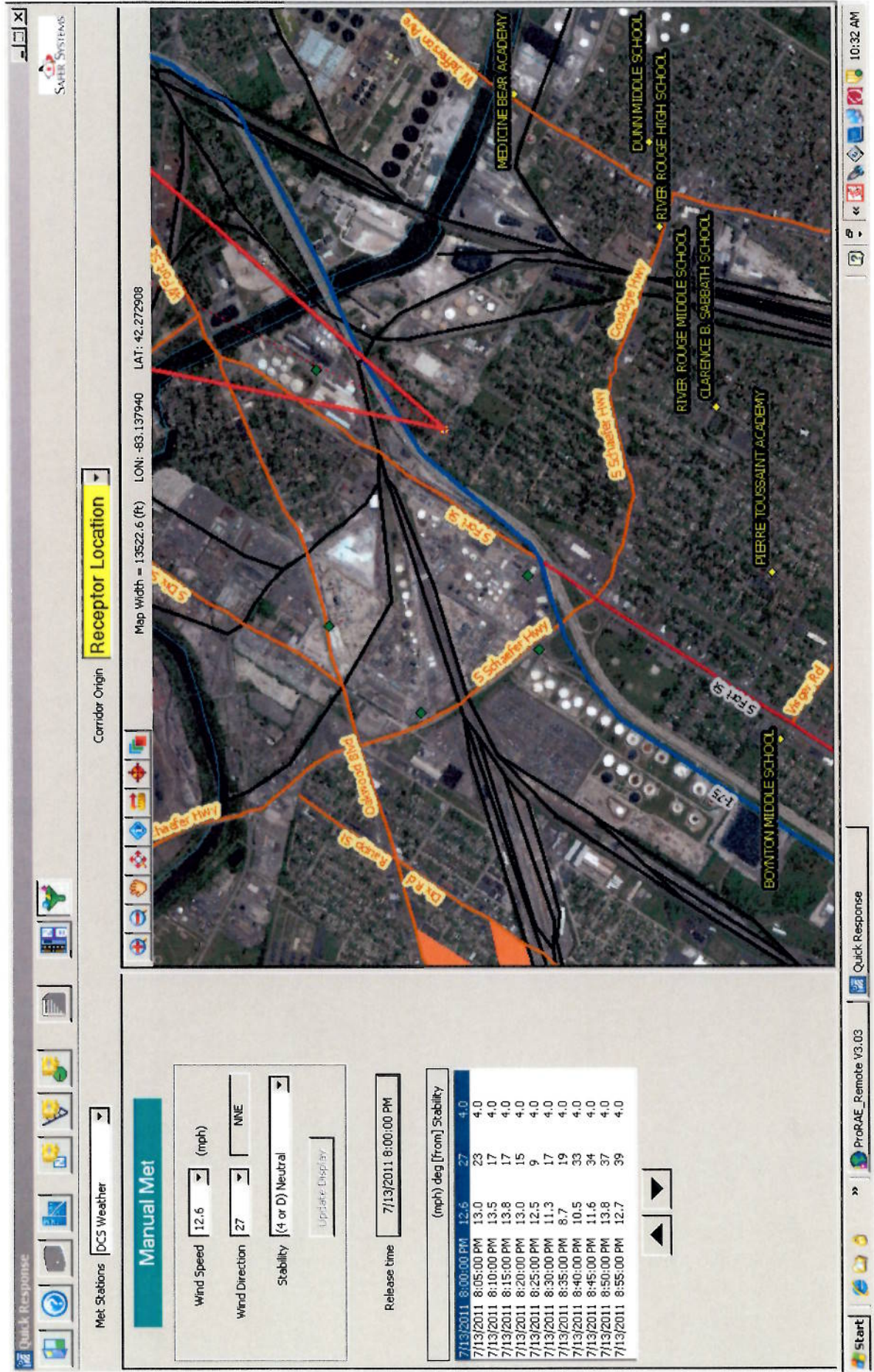
Map labels: S 49th St, S 50th St, S 51st St, S 52nd St, S 53rd St, S 54th St, S 55th St, S 56th St, S 57th St, S 58th St, S 59th St, S 60th St, S 61st St, S 62nd St, S 63rd St, S 64th St, S 65th St, S 66th St, S 67th St, S 68th St, S 69th St, S 70th St, S 71st St, S 72nd St, S 73rd St, S 74th St, S 75th St, S 76th St, S 77th St, S 78th St, S 79th St, S 80th St, S 81st St, S 82nd St, S 83rd St, S 84th St, S 85th St, S 86th St, S 87th St, S 88th St, S 89th St, S 90th St, S 91st St, S 92nd St, S 93rd St, S 94th St, S 95th St, S 96th St, S 97th St, S 98th St, S 99th St, S 100th St, S 101st St, S 102nd St, S 103rd St, S 104th St, S 105th St, S 106th St, S 107th St, S 108th St, S 109th St, S 110th St, S 111th St, S 112nd St, S 113rd St, S 114th St, S 115th St, S 116th St, S 117th St, S 118th St, S 119th St, S 120th St, S 121st St, S 122nd St, S 123rd St, S 124th St, S 125th St, S 126th St, S 127th St, S 128th St, S 129th St, S 130th St, S 131st St, S 132nd St, S 133rd St, S 134th St, S 135th St, S 136th St, S 137th St, S 138th St, S 139th St, S 140th St, S 141st St, S 142nd St, S 143rd St, S 144th St, S 145th St, S 146th St, S 147th St, S 148th St, S 149th St, S 150th St, S 151st St, S 152nd St, S 153rd St, S 154th St, S 155th St, S 156th St, S 157th St, S 158th St, S 159th St, S 160th St, S 161st St, S 162nd St, S 163rd St, S 164th St, S 165th St, S 166th St, S 167th St, S 168th St, S 169th St, S 170th St, S 171st St, S 172nd St, S 173rd St, S 174th St, S 175th St, S 176th St, S 177th St, S 178th St, S 179th St, S 180th St, S 181st St, S 182nd St, S 183rd St, S 184th St, S 185th St, S 186th St, S 187th St, S 188th St, S 189th St, S 190th St, S 191st St, S 192nd St, S 193rd St, S 194th St, S 195th St, S 196th St, S 197th St, S 198th St, S 199th St, S 200th St, S 201st St, S 202nd St, S 203rd St, S 204th St, S 205th St, S 206th St, S 207th St, S 208th St, S 209th St, S 210th St, S 211st St, S 212nd St, S 213rd St, S 214th St, S 215th St, S 216th St, S 217th St, S 218th St, S 219th St, S 220th St, S 221st St, S 222nd St, S 223rd St, S 224th St, S 225th St, S 226th St, S 227th St, S 228th St, S 229th St, S 230th St, S 231st St, S 232nd St, S 233rd St, S 234th St, S 235th St, S 236th St, S 237th St, S 238th St, S 239th St, S 240th St, S 241st St, S 242nd St, S 243rd St, S 244th St, S 245th St, S 246th St, S 247th St, S 248th St, S 249th St, S 250th St, S 251st St, S 252nd St, S 253rd St, S 254th St, S 255th St, S 256th St, S 257th St, S 258th St, S 259th St, S 260th St, S 261st St, S 262nd St, S 263rd St, S 264th St, S 265th St, S 266th St, S 267th St, S 268th St, S 269th St, S 270th St, S 271st St, S 272nd St, S 273rd St, S 274th St, S 275th St, S 276th St, S 277th St, S 278th St, S 279th St, S 280th St, S 281st St, S 282nd St, S 283rd St, S 284th St, S 285th St, S 286th St, S 287th St, S 288th St, S 289th St, S 290th St, S 291st St, S 292nd St, S 293rd St, S 294th St, S 295th St, S 296th St, S 297th St, S 298th St, S 299th St, S 300th St, S 301st St, S 302nd St, S 303rd St, S 304th St, S 305th St, S 306th St, S 307th St, S 308th St, S 309th St, S 310th St, S 311st St, S 312nd St, S 313rd St, S 314th St, S 315th St, S 316th St, S 317th St, S 318th St, S 319th St, S 320th St, S 321st St, S 322nd St, S 323rd St, S 324th St, S 325th St, S 326th St, S 327th St, S 328th St, S 329th St, S 330th St, S 331st St, S 332nd St, S 333rd St, S 334th St, S 335th St, S 336th St, S 337th St, S 338th St, S 339th St, S 340th St, S 341st St, S 342nd St, S 343rd St, S 344th St, S 345th St, S 346th St, S 347th St, S 348th St, S 349th St, S 350th St, S 351st St, S 352nd St, S 353rd St, S 354th St, S 355th St, S 356th St, S 357th St, S 358th St, S 359th St, S 360th St, S 361st St, S 362nd St, S 363rd St, S 364th St, S 365th St, S 366th St, S 367th St, S 368th St, S 369th St, S 370th St, S 371st St, S 372nd St, S 373rd St, S 374th St, S 375th St, S 376th St, S 377th St, S 378th St, S 379th St, S 380th St, S 381st St, S 382nd St, S 383rd St, S 384th St, S 385th St, S 386th St, S 387th St, S 388th St, S 389th St, S 390th St, S 391st St, S 392nd St, S 393rd St, S 394th St, S 395th St, S 396th St, S 397th St, S 398th St, S 399th St, S 400th St, S 401st St, S 402nd St, S 403rd St, S 404th St, S 405th St, S 406th St, S 407th St, S 408th St, S 409th St, S 410th St, S 411st St, S 412nd St, S 413rd St, S 414th St, S 415th St, S 416th St, S 417th St, S 418th St, S 419th St, S 420th St, S 421st St, S 422nd St, S 423rd St, S 424th St, S 425th St, S 426th St, S 427th St, S 428th St, S 429th St, S 430th St, S 431st St, S 432nd St, S 433rd St, S 434th St, S 435th St, S 436th St, S 437th St, S 438th St, S 439th St, S 440th St, S 441st St, S 442nd St, S 443rd St, S 444th St, S 445th St, S 446th St, S 447th St, S 448th St, S 449th St, S 450th St, S 451st St, S 452nd St, S 453rd St, S 454th St, S 455th St, S 456th St, S 457th St, S 458th St, S 4

July 13 2011 6:00 pm

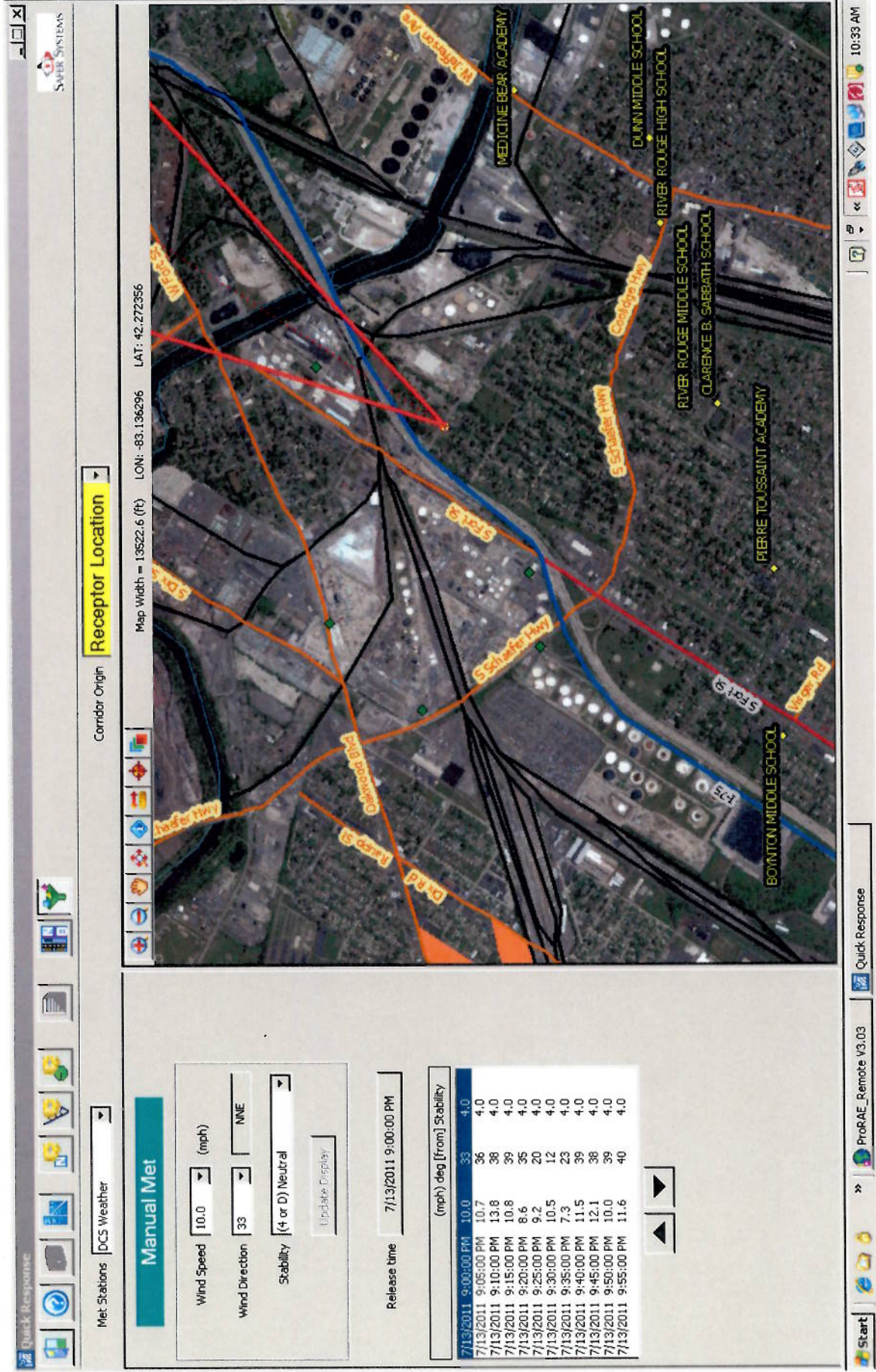


[illegible]

July 13 2011 8:00 pm



July 13 2011 9:00 pm



Met Stations: DCS Weather

Corridor Origin: Receptor Location

Map Width = 13522.6 (ft) LON: -83.142906 LAT: 42.273939

Manual Met

Wind Speed: 10.6 (mph)

Wind Direction: 40 NE

Stability: (4 or D) Neutral

Update Display

Release time: 7/13/2011 10:00:00 PM

	(mph)	deg	[from]	Stability
7/13/2011 10:00:00 PM	10.6	40	4.0	
7/13/2011 10:05:00 PM	8.6	39	4.0	
7/13/2011 10:10:00 PM	5.3	29	5.0	
7/13/2011 10:15:00 PM	7.4	20	5.0	
7/13/2011 10:20:00 PM	8.1	19	4.0	
7/13/2011 10:25:00 PM	7.0	26	4.0	
7/13/2011 10:30:00 PM	6.6	23	5.0	
7/13/2011 10:35:00 PM	11.1	33	4.0	
7/13/2011 10:40:00 PM	11.8	39	4.0	
7/13/2011 10:45:00 PM	13.0	40	4.0	
7/13/2011 10:50:00 PM	13.9	38	4.0	
7/13/2011 10:55:00 PM	13.2	38	4.0	

[illegible]

Met Stations: DCS Weather

Corridor Origin: Receptor Location

Map Width = 13522.6 (ft) LON: -83.135738 LAT: 42.272408

Manual Met

Wind Speed: 8.0 (mph)

Wind Direction: 6 North

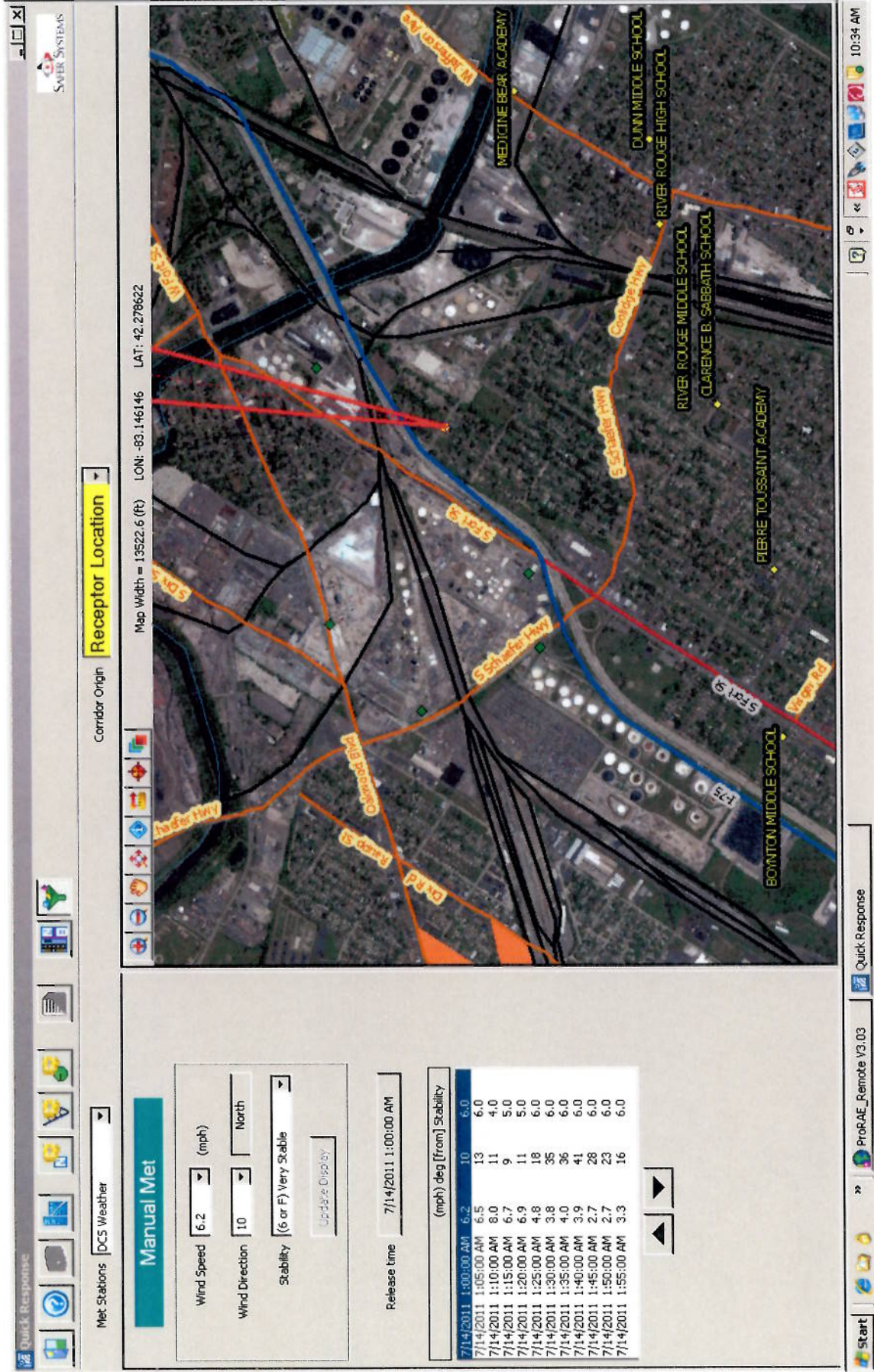
Stability: (4 or D) Neutral

Update Display

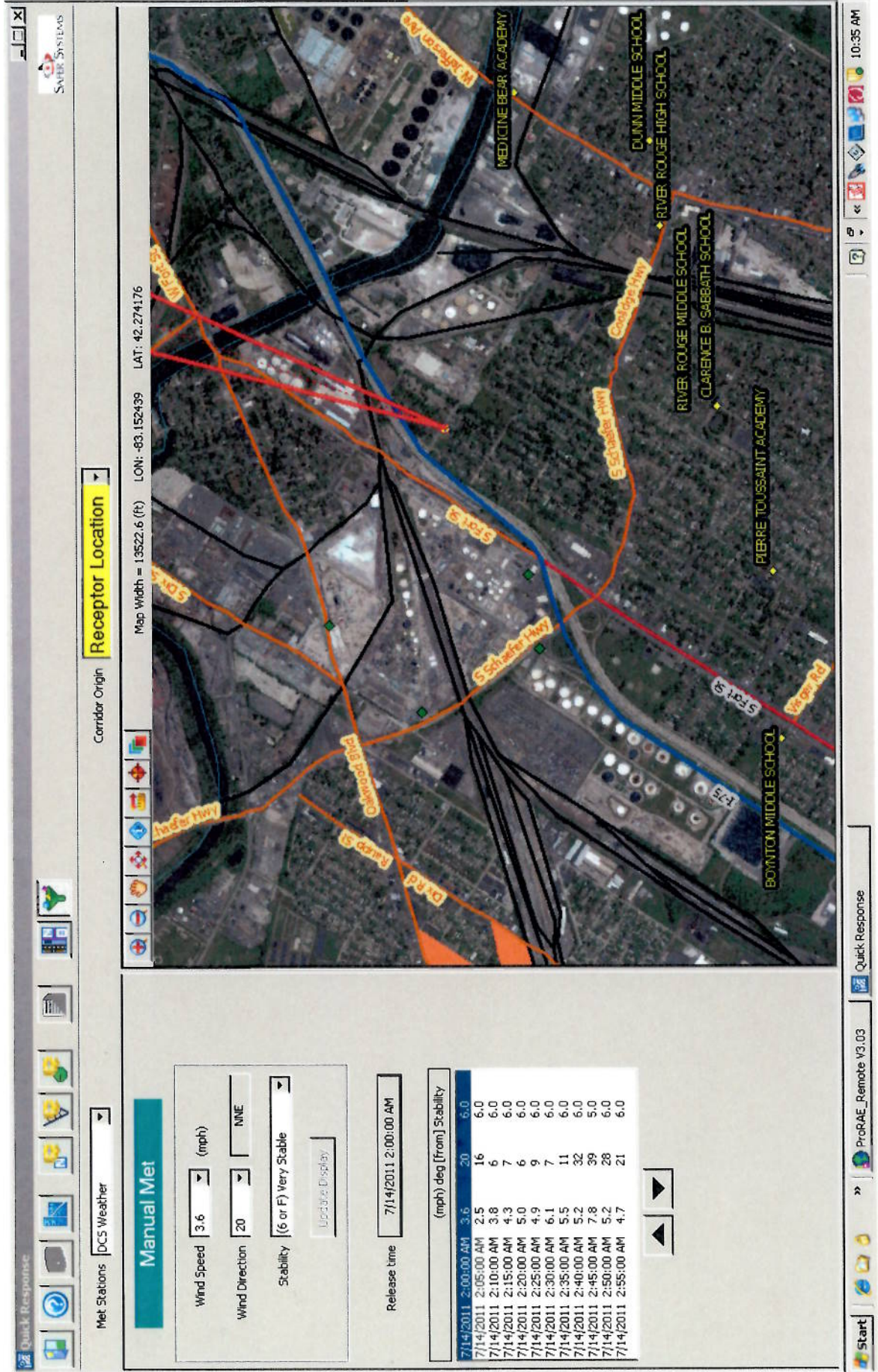
Release time: 7/14/2011

(mph)	deg	[from]	Stability
8.0	6	4.0	
8.7	9	4.0	
8.9	11	4.0	
7.4	15	4.0	
6.0	15	5.0	
7.6	12	5.0	
7.7	13	4.0	
7.6	14	4.0	
8.5	11	4.0	
7.1	13	5.0	
5.5	13	6.0	
5.7	11	6.0	

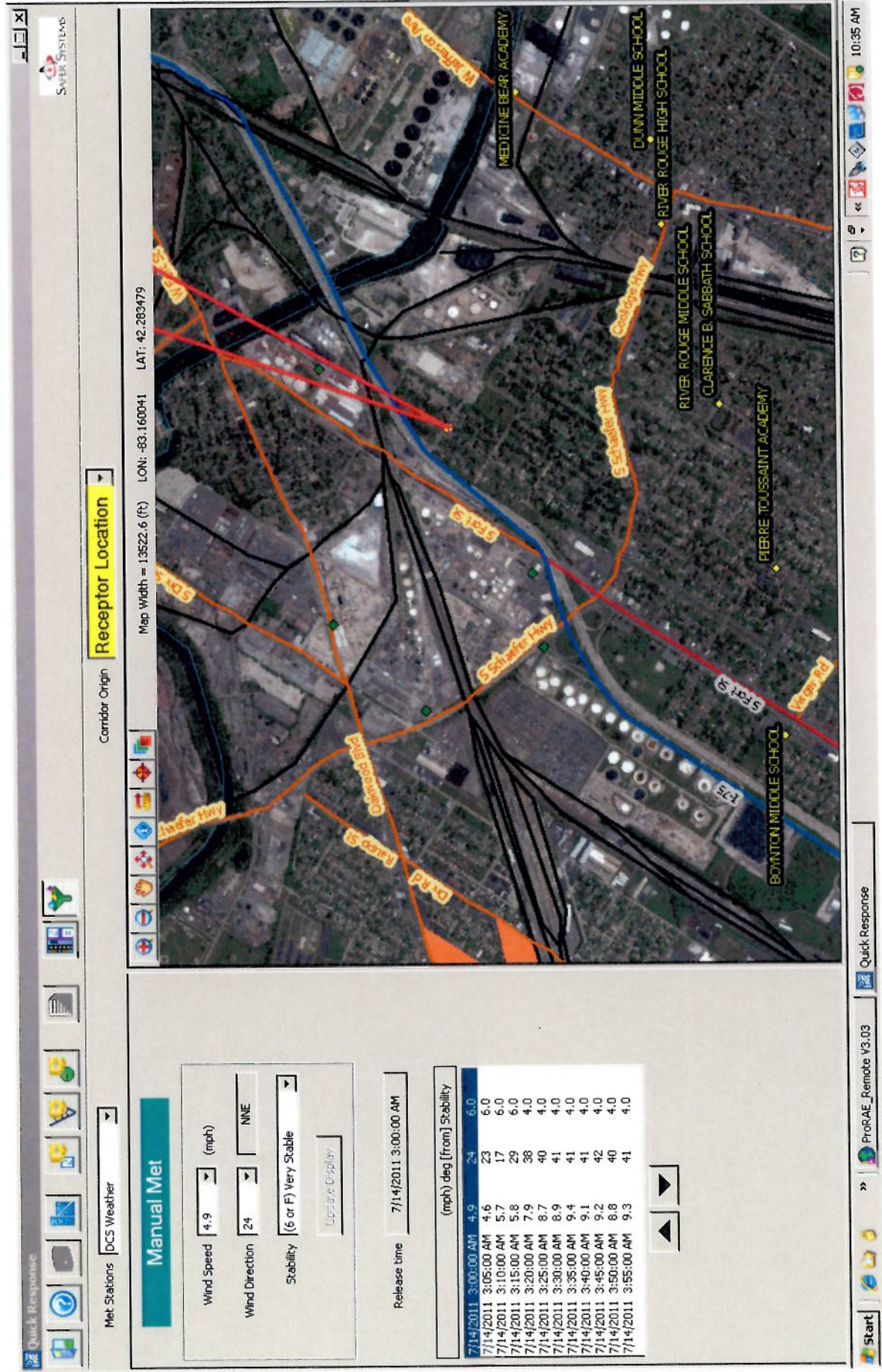
July 14 2011 1:00 am



July 14 2011 2:00 am



July 14 2011 3:00 am



Quick Response

Met Stations: DC5 Weather

Receptor Location

Corridor Origin

Map Width = 13522.6 (ft) LON: -83.136476 LAT: 42.272695

Manual Met

Wind Speed: 9.6 (mph)

Wind Direction: 40 NE

Stability: (4 or D) Neutral

Update Display

Release time: 7/14/2011 4:00:00 AM

(mph)	deg	[from]	Stability
9.6	40	4.0	
8.8	41	4.0	
8.8	44	4.0	
8.7	44	4.0	
8.7	41	4.0	
9.0	39	4.0	
7.3	41	4.0	
4.7	41	4.0	
6.1	44	5.0	
5.7	40	5.0	
3.3	33	6.0	
3.3	13	6.0	

Quick Response

ProRAE_Remote V3.03

10:35 AM

(mph)	deg [from]	Stability
7/14/2011 5:00:00 AM	5.0	2
7/14/2011 5:05:00 AM	4.8	1
7/14/2011 5:10:00 AM	5.2	0.1
7/14/2011 5:15:00 AM	5.8	358
7/14/2011 5:20:00 AM	6.0	357
7/14/2011 5:25:00 AM	5.6	357
7/14/2011 5:30:00 AM	6.1	355
7/14/2011 5:35:00 AM	5.0	354
7/14/2011 5:40:00 AM	6.7	357
7/14/2011 5:45:00 AM	7.2	0.3
7/14/2011 5:50:00 AM	6.8	2
7/14/2011 5:55:00 AM	7.7	1

Manual Met

Wind Speed: 8.0 (mph) | Wind Direction: 2 | North | Stability: (4 or D) Neutral | Update Display

Release time: 7/14/2011 6:00:00 AM

(mph)	deg [from]	Stability	
7/14/2011 6:00:00 AM	8.0	2	4.0
7/14/2011 6:05:00 AM	6.4	4	4.0
7/14/2011 6:10:00 AM	6.0	6	5.0
7/14/2011 6:15:00 AM	5.5	7	5.0
7/14/2011 6:20:00 AM	6.0	6	4.0
7/14/2011 6:25:00 AM	6.0	7	5.0
7/14/2011 6:30:00 AM	6.8	2	4.0
7/14/2011 6:35:00 AM	7.3	1	4.0
7/14/2011 6:40:00 AM	7.9	359	4.0
7/14/2011 6:45:00 AM	7.9	360	4.0
7/14/2011 6:50:00 AM	7.3	0.4	4.0
7/14/2011 6:55:00 AM	7.2	360	4.0

Map Width = 13522.6 (ft) | LON: -83.140133 | LAT: 42.274781

Corridor Origin: Receptor Location

Met Stations: DCS Weather

Quick Response

Start | ProRAE_Remote V3.03 | Quick Response

Quick Response

SABER SYSTEMS

Met Stations [DCS Weather] >

Corridor Origin >

Receptor Location >

Manual Met

Wind Speed 7.7 (mph)

Wind Direction 357 North

Stability (4 or D) Neutral

[Update Display](#)

Release time 7/14/2011 7:00:00 AM

(mph)	deg	[from]	Stability
7/14/2011 7:00:00 AM	7.7	357	4.0
7/14/2011 7:05:00 AM	8.1	357	4.0
7/14/2011 7:10:00 AM	8.4	360	4.0
7/14/2011 7:15:00 AM	8.2	1	4.0
7/14/2011 7:20:00 AM	7.8	0.1	4.0
7/14/2011 7:25:00 AM	7.9	358	4.0
7/14/2011 7:30:00 AM	7.8	358	4.0
7/14/2011 7:35:00 AM	7.0	360	4.0
7/14/2011 7:40:00 AM	6.5	1	4.0
7/14/2011 7:45:00 AM	6.5	5	3.0
7/14/2011 7:50:00 AM	6.0	7	2.0
7/14/2011 7:55:00 AM	5.3	5	2.0

<< < > >>

Quick Response

Met Stations: DCS Weather | Receptor Location

Corridor Origin

Map Width = 13522.6 (ft) LON: -83.148628 LAT: 42.275787

Manual Met

Wind Speed: 6.3 (mph)

Wind Direction: 8 North

Stability: (1 or A) Very Unstable

Update Display

Release time: 7/14/2011 8:00:00 AM

(mph)	deg [from]	Stability
7/14/2011 8:00:00 AM	6.3	8
7/14/2011 8:05:00 AM	5.5	8
7/14/2011 8:10:00 AM	4.1	17
7/14/2011 8:15:00 AM	5.5	27
7/14/2011 8:20:00 AM	6.2	42
7/14/2011 8:25:00 AM	6.5	41
7/14/2011 8:30:00 AM	6.7	43
7/14/2011 8:35:00 AM	6.5	44
7/14/2011 8:40:00 AM	7.4	43
7/14/2011 8:45:00 AM	8.7	41
7/14/2011 8:50:00 AM	8.9	41
7/14/2011 8:55:00 AM	7.4	52

The map displays an aerial view of a suburban area. A red line indicates the receptor location. Orange lines represent major roads, including Schaefer Hwy, Coakley Hwy, and Wagner Rd. Several schools are labeled: Medicine Bear Academy, River Rouge Middle School, Clarence B. Sabbath School, Pierre Toussaint Academy, Boynton Middle School, and Dunham Middle School. The map also shows railroad tracks and other local infrastructure.

Quick Response

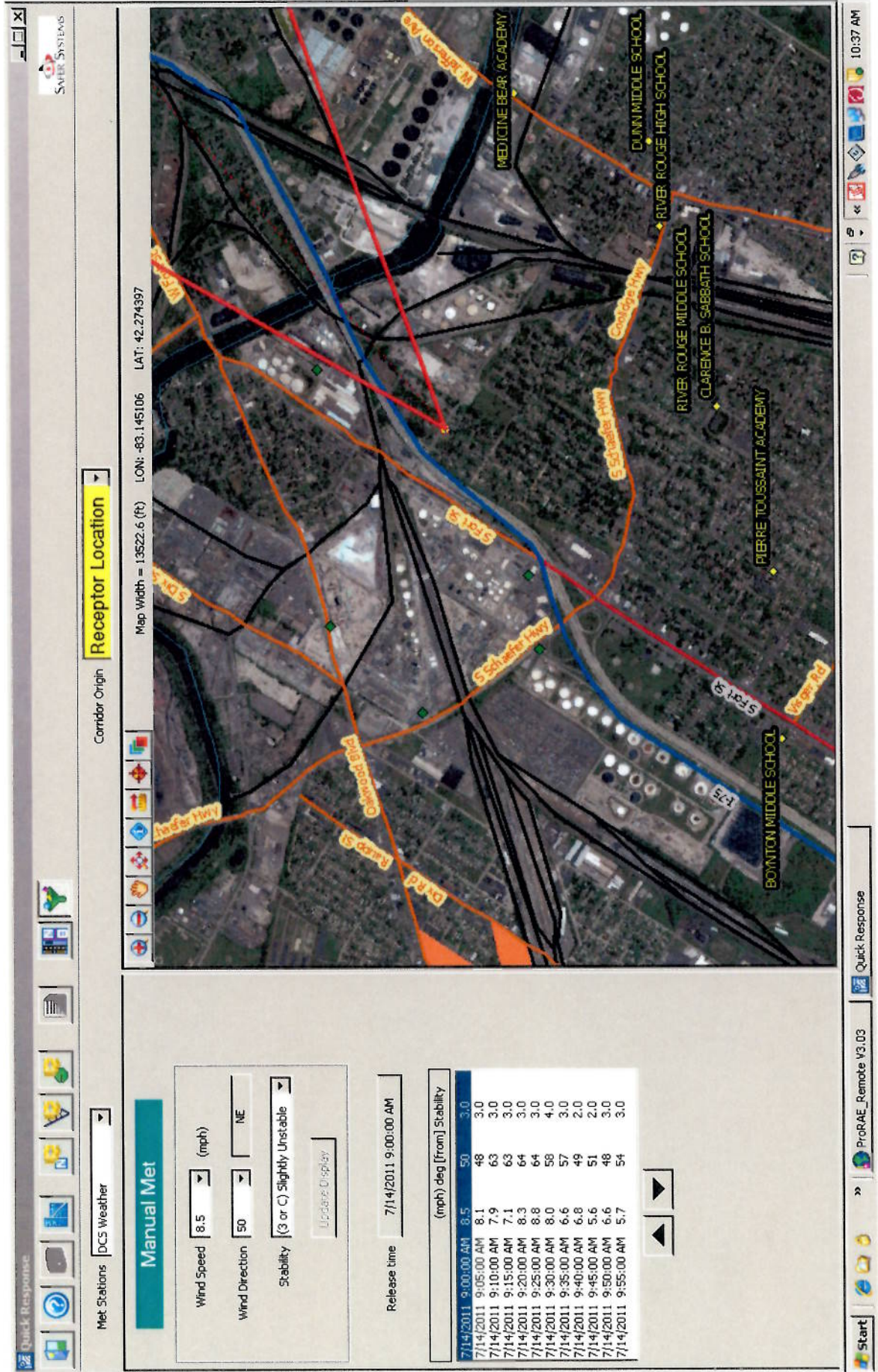
ProRAE Remote V3.03

Start

10:37 AM

(mph) deg [from]	Stability
7/14/2011 8:00:00 AM	6.3
7/14/2011 8:05:00 AM	5.5
7/14/2011 8:10:00 AM	4.1
7/14/2011 8:15:00 AM	5.5
7/14/2011 8:20:00 AM	6.2
7/14/2011 8:25:00 AM	6.5
7/14/2011 8:30:00 AM	6.7
7/14/2011 8:35:00 AM	6.5
7/14/2011 8:40:00 AM	7.4
7/14/2011 8:45:00 AM	8.7
7/14/2011 8:50:00 AM	8.9
7/14/2011 8:55:00 AM	7.4
8	1.0
17	1.0
27	1.0
42	2.0
41	2.0
43	3.0
44	3.0
43	4.0
41	4.0
41	4.0
52	4.0

July 14 2011 9:00 am



[illegible]

Quick Response

Met Stations: DCS Weather Receptor Location Corridor Origin

Map Width = 13522.6 (ft) LON: -83.152068 LAT: 42.277794

Manual Met

Wind Speed: 2.5 (mph)

Wind Direction: 67 ENE

Stability: (1 or A) Very Unstable

Update Display

Release time: 7/14/2011 11:00:00 AM

(mph)	deg	[from]	Stability
7/14/2011 11:00:00 AM	2.5	67	1.0
7/14/2011 11:05:00 AM	1.2	128	1.0
7/14/2011 11:10:00 AM	3.4	199	1.0
7/14/2011 11:15:00 AM	0.9	219	1.0
7/14/2011 11:20:00 AM	1.9	77	1.0
7/14/2011 11:25:00 AM	2.8	132	1.0
7/14/2011 11:30:00 AM	3.8	125	1.0
7/14/2011 11:35:00 AM	2.5	121	1.0
7/14/2011 11:40:00 AM	1.2	251	1.0
7/14/2011 11:45:00 AM	3.8	135	1.0
7/14/2011 11:50:00 AM	3.6	122	1.0
7/14/2011 11:55:00 AM	4.5	118	1.0

The screenshot displays the ProRAE V3.03 software interface. The top section features a map of a corridor with various roads and landmarks labeled, including "S 16th St", "S 17th St", "S 18th St", "S 19th St", "S 20th St", "S 21st St", "S 22nd St", "S 23rd St", "S 24th St", "S 25th St", "S 26th St", "S 27th St", "S 28th St", "S 29th St", "S 30th St", "S 31st St", "S 32nd St", "S 33rd St", "S 34th St", "S 35th St", "S 36th St", "S 37th St", "S 38th St", "S 39th St", "S 40th St", "S 41st St", "S 42nd St", "S 43rd St", "S 44th St", "S 45th St", "S 46th St", "S 47th St", "S 48th St", "S 49th St", "S 50th St", "S 51st St", "S 52nd St", "S 53rd St", "S 54th St", "S 55th St", "S 56th St", "S 57th St", "S 58th St", "S 59th St", "S 60th St", "S 61st St", "S 62nd St", "S 63rd St", "S 64th St", "S 65th St", "S 66th St", "S 67th St", "S 68th St", "S 69th St", "S 70th St", "S 71st St", "S 72nd St", "S 73rd St", "S 74th St", "S 75th St", "S 76th St", "S 77th St", "S 78th St", "S 79th St", "S 80th St", "S 81st St", "S 82nd St", "S 83rd St", "S 84th St", "S 85th St", "S 86th St", "S 87th St", "S 88th St", "S 89th St", "S 90th St", "S 91st St", "S 92nd St", "S 93rd St", "S 94th St", "S 95th St", "S 96th St", "S 97th St", "S 98th St", "S 99th St", "S 100th St".

The bottom section contains a "Manual Met" panel with the following data:

Wind Speed	Wind Direction	Stability
5.0 (mph)	91 East	(1 or A) Very Unstable

Below the "Manual Met" panel, there is a "Release time" field set to "7/14/2011 12:00:00 PM".

To the right of the "Release time" field, there is a table showing wind speed and stability data over time:

(mph)	deg [from]	Stability
7/14/2011 12:00:00 PM	5.0	91 1.0
7/14/2011 12:05:00 PM	3.9	124 1.0
7/14/2011 12:10:00 PM	2.7	160 1.0
7/14/2011 12:15:00 PM	3.5	171 1.0
7/14/2011 12:20:00 PM	2.3	189 1.0
7/14/2011 12:25:00 PM	3.3	241 1.0
7/14/2011 12:30:00 PM	3.0	161 1.0
7/14/2011 12:35:00 PM	2.6	176 1.0
7/14/2011 12:40:00 PM	3.6	137 1.0
7/14/2011 12:45:00 PM	5.4	136 1.0
7/14/2011 12:50:00 PM	3.0	147 1.0
7/14/2011 12:55:00 PM	5.1	146 1.0

Attachment 5 - Ambient Air and Wastewater Sample results March 2011 through July 2011

Location	3/25/2011 (ppb)	4/13/2011 (ppb)	5/20/11 (ppb)	6/13/11 (ppb)	7/13/11 (ppb)
I-75	Non-Detect	0.305	Non-Detect	0.37	0.554
Patricia	Non-Detect	0.37	6.87	0.302	1.72
Liebold	Non-Detect	0.431	Non-Detect	0.308	1.48
Liddesdale	Non-Detect	0.286	0.4	0.305	0.493
Background: East Fort	Non-Detect	0.37	N/A	0.431	N/A
Background: West Fort	Non-Detect	0.431	N/A	0.493	N/A
Background: Deacon & Pleasant	N/A	N/A	0.493	N/A	1.69
Background: Deacon & Leonard	N/A	N/A	Non-Detect	N/A	0.554
Carbon East Effluent*	2.1 and 1.8	No Sample	Non-Detect	N/A	No Sample Off-Line
Carbon West Effluent*	Non-Detect	No Sample	Non-Detect	N/A	Non-Detect
Peroxide Only Effluent*	N/A	N/A	N/A	97	N/A

*Results are waste water samples collected for analysis under EPA Method 8260. All other samples are a TO-15 analysis for air samples.

Attachment 6 – Relevant Pictures

Picture 1

Lawn being mowed on 7/14/11 prior to Liebold sample pick up. Canister is on orange barrel in background.



Picture 2

Deacon and Pleasant sampling site without building. Note the property in the background is not Marathon owned or operated.

