

U.S. ENVIRONMENTAL PROTECTION AGENCY
POLLUTION/SITUATION REPORT
Silvertip Pipeline Spill



UNITED STATES ENVIRONMENTAL PROTECTION AGENCY, Region VIII

Subject: SITREP # 03 July 11, 2011
Silvertip Pipeline Oil Spill Response
Billings, Montana Latitude: 45° 39' 25.57" Longitude: 108° 44' 54.35"



Reporting Period: 0700 hours 07/10/11 to 0700 hours 07/11/11

USEPA Concurrence	Finance Section	Logistics Section	Planning Section	Operations Section
----------------------	-----------------	-------------------	------------------	-----------------------

1.0 Introduction

At approximately 11:00 PM on Friday, July 1 a break occurred in a 12-inch pipeline owned by ExxonMobil that resulted in a spill of crude oil into the Yellowstone River approximately 20 miles upstream of Billings, Montana. According to the company's estimates, 1,000 barrels of oil entered the river, which is in flood stage, before the pipeline was cut off. EPA's primary concern is protecting people's health and the environment. EPA will remain on-site to ensure cleanup and restoration efforts do just that. EPA continues to hold ExxonMobil, the responsible party, accountable for assessment and cleanup.

1.1 Background Information

D.O. Number:		Action Memo Date:	
Response Authority:	OPA	Response Type:	Emergency
Response Lead:	PRP	Incident Category:	Removal Action
NPL Status:	Non NPL	Operable Unit:	
Mobilization Date:	7/2/11	Start Date:	7/2/11
RCRIS ID:			
ERNS No.:		State Notification:	
FPN#: E11809		Reimbursable Account	

1.2 Preliminary Site Inspection and Response Activities

An EPA On-Scene Coordinator (OSC) has been directing and overseeing cleanup activities since arriving at the site. EPA and U.S. Fish and Wildlife Service personnel conducted aerial assessments and reported seeing bank deposits and small pooling of oil in backwaters and slow water at intermittent points along both the north and south banks of the Yellowstone River. Personnel are walking the shores and are deploying absorbent booms along the river banks to absorb oil that collected in slow water along the shoreline. EPA is conducting air monitoring and has taken water samples to determine what impacts the spill may have on air or water quality. Shoreline assessment is ongoing to determine effective strategies for recovering the oil. Sorbent boom deployment is ongoing and where possible other oil recovery and containment approaches are being implemented. Flood conditions on the river have hampered oil recovery efforts and prevented a more thorough assessment of the impacts at this time.

1.3 Incident Objective

The following incident objectives and command emphasis are taken from the IAP for the Operational Period 6 – July 8, 2011, at 0730 to July 11, 2011, at 0730.

General Response Objectives

1. Ensure the safety of the responders as well as maximize the protection of public health and welfare.
2. Maintain the source of the spill
3. Maintain protection of environmentally sensitive areas.
4. Define impacted areas
5. Contain and recover spilled material
6. Develop and execute a remediation work plan for impacted areas
7. Manage a coordinated response effort

8. Execute Wildlife Plan to to recover and rehabilitate injured wildlife.
9. Keep stakeholders and public informed of response activities (Residential, Commercial, Agricultural, and Tribal)

2.0 Background

On July 6, 2011 EPA issued an administrative order to ExxonMobile instructing them to provide information on the circumstance of the spill, conduct appropriate recovery and remediation actions, and perform ongoing environmental sampling. The order also requires ExxonMobile to provide a workplan which is currently being reviewed by the state of Montana, EPA, and other agency partners.

3.0 Current Operations

There are 210 responders working in Division A and 105 responders in division B. EPA's ERR contractor ER (assigned to Division B) has been notified its final day is 7/12/2011. In order to reduce overhead and ceiling on our NPFC funding from OSLTF EPA consulted with the RP about subcontracting with ER. Overflights have identified 47 oily sites: 25 in Division A, 15 in Division B, and 7 in Division C. One site in Division A has been determined to be non-oil. Source removal has been completed at 2 sites in Division A. Floodwaters have prevented access to 4 four sites in Division A, 8 Sites in Division B, and all 7 Sites in Division C.

Division A crews are staged at Thiel Road, Clarks Fork, and Duck Creek Staging areas and working 12 oil recovery sites. Division B crews are staged at Blue Creek/Moon Park and Duck Creek, Blue Creek staging areas and working 6 oil recovery sites. No crews have been assigned to Division C due to high water.

Operations is using airboats at various backwater locations for oil removal. Jet-boats for addressing island oily areas have not been approved by safety to date. River water levels are expected to continue to drop and will likely result in safety approval for use of jet-boats for transporting crews to islands.

SCAT has completed 7.5 miles onshore miles walking. SCAT completed photo log of right and left bank shoreline in Division A via Jet-boat. SCAT data for the Division A river banks is being processed. A total of four SCAT Treatment Recommendations (STRs) have been completed and approved as of this reporting period.

Silvertip Pipeline Incident 7/11/11 Work Areas

Work Area/Work site Summary

Work Area	Identified	No Action Required	Underway	Awaiting Approval
A	26	1	16	0
B	16	0	8	0
C	8	0	1	0
D	0	0	0	0
Total	50¹	1	25²	0

¹Work Activities restricted at 24 sites due to river levels

²7 Sites awaiting SCAT completion confirmation

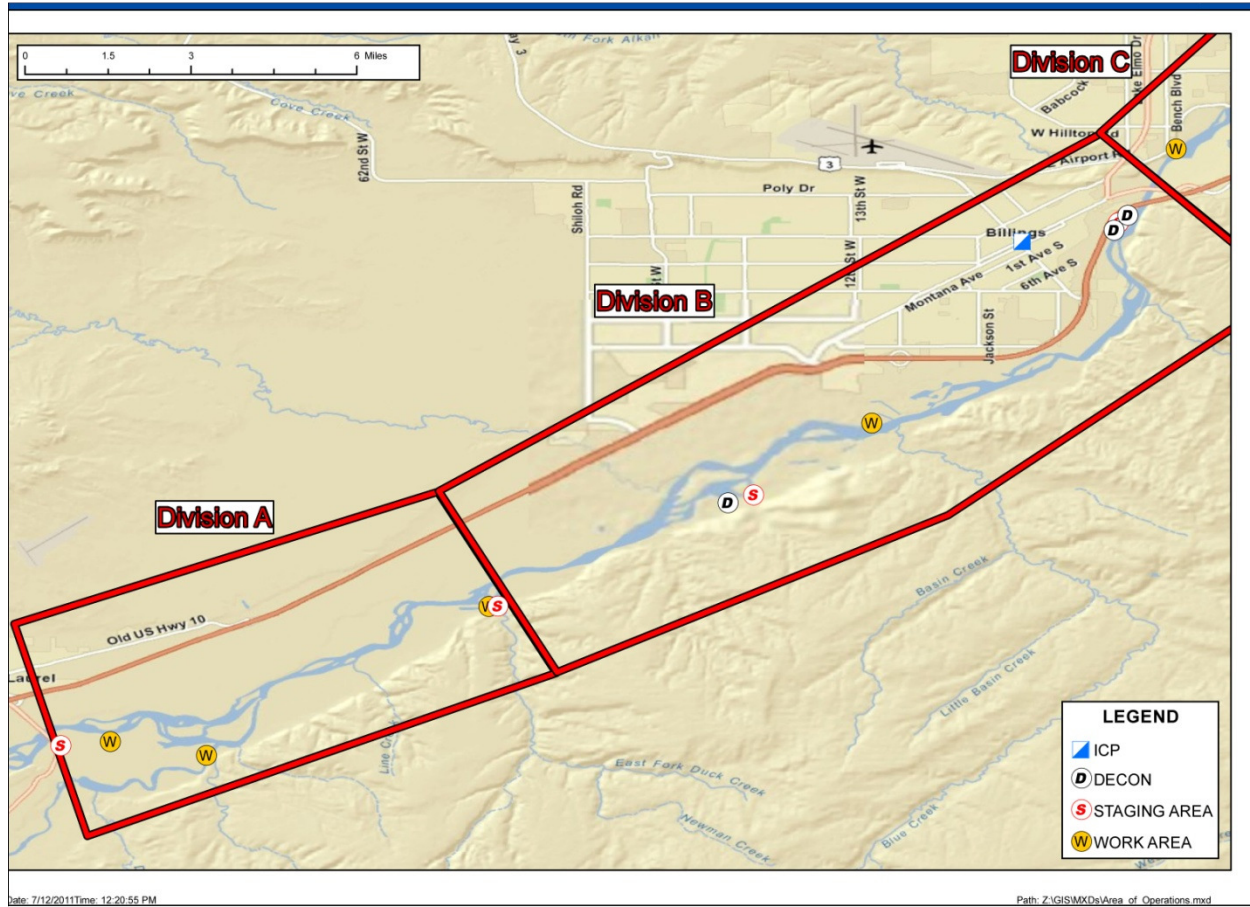
SCAT Monitoring Data

Work Area	Number of Segments	Number of Surveys in Progress ²	Oil Impact (Miles) ¹			
			Very Light	Light	Moderate	Heavy
A	29	9	0.31	0.07	0.49	0
B	45	5	1.08	4.61	0.2	0.06
C	88	9	0.94	0	0.19	0
D	47	0	0	0	0	0
Totals	209	23				

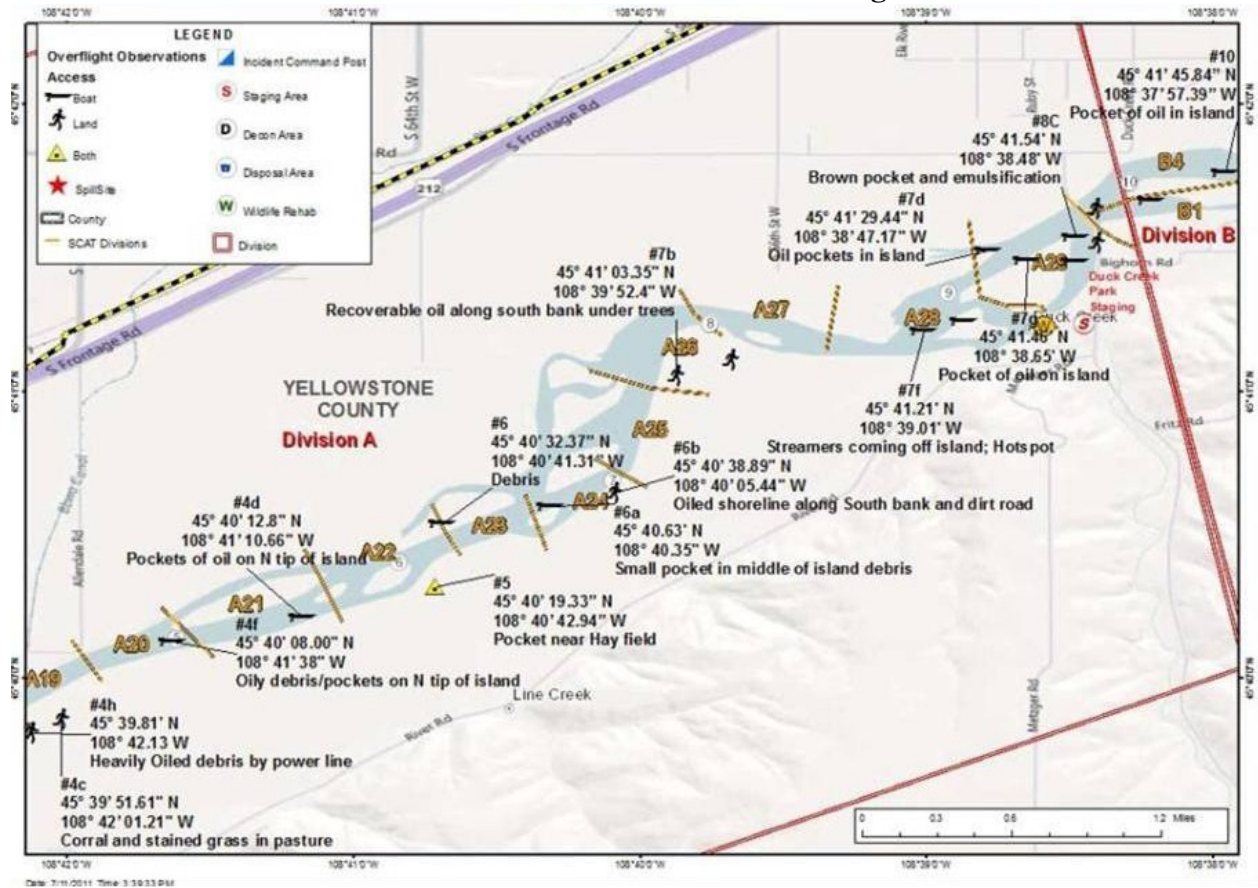
¹Represents miles of impacted areas observed during completed SCATS

²Segments evaluated include only partial shorelines in each segment pending boat access due to unsafe river conditions

Divisions A, B, C – Staging and Decon Areas



Division A East Assessment and Monitoring Areas



LEGEND

Overflight Observations

- Boat
- Land
- Both
- Spill Site
- County
- SCAT Divisions

Incident Command Post

- Staging Area
- Decon Area
- Disposal Area
- Wildlife Rehab
- Division

Map Labels:

- E Main St
- Laurel Stockyards
- Canyon Creek Ditch
- Blanca Canal
- 90
- Spill Site
- Riverside Park
- Thiel Road
- Pocket of oil under elec. lines
- Pockets of oil under power lines
- Davis Creek
- Davis Ditch
- Clark Fork River
- Spring Creek
- Dry Creek
- Thiel Road
- Clark Fork Yellow Stone River
- Division A
- YELLOWSTONE COUNTY
- Tip of island
- Emulsified oil on island
- Oily debris/pockets on island
- Heavily Oiled debris by power line
- Pocket of oil in backwater area by house
- Oily debris/pockets on N tip of island

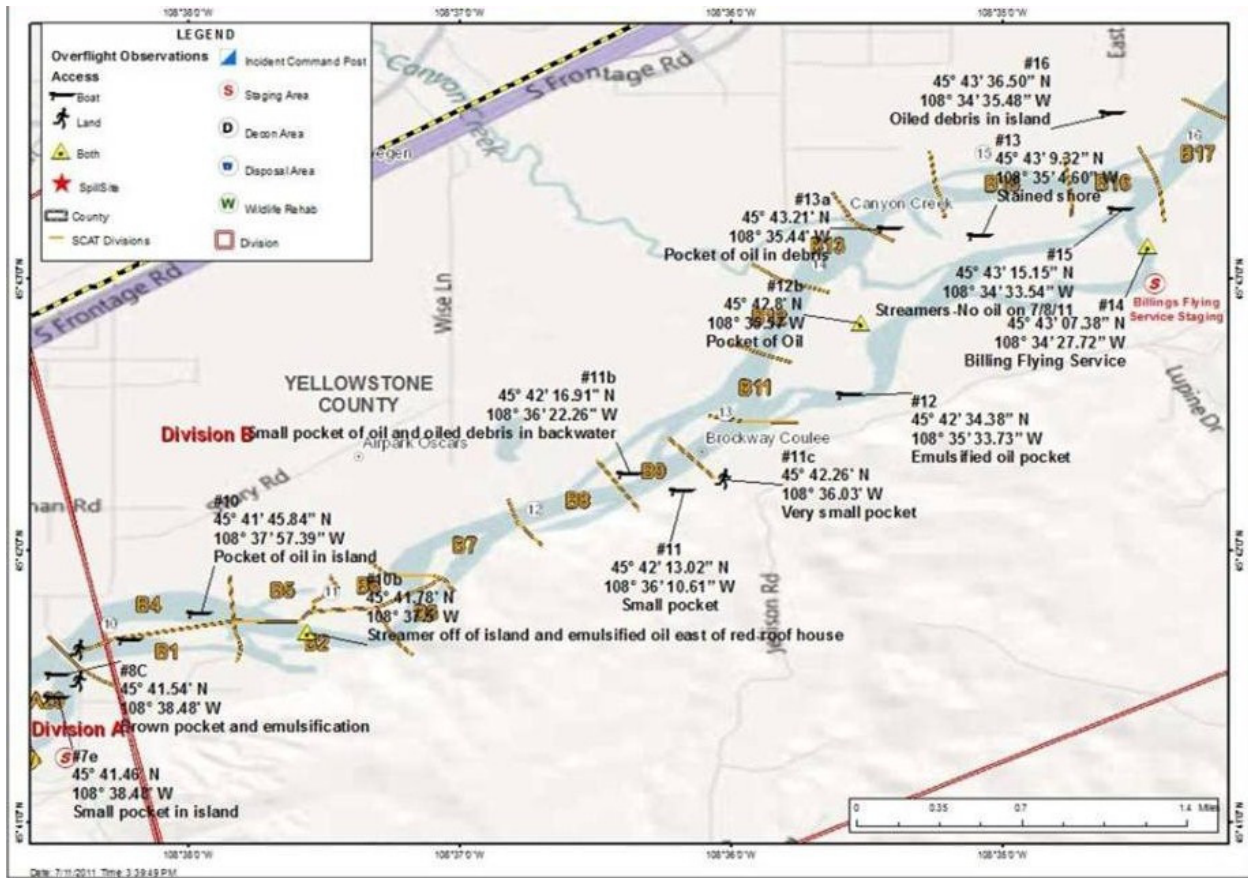
Coordinates:

- #1: 45° 39' 25.57" N, 108° 44' 54.35" W
- #2: 45° 38' 59.40" N, 108° 44' 29.31" W
- #3: 45° 38' 59.87" N, 108° 43' 46.07" W
- #3b: 45° 39' 06.22" N, 108° 43' 51.76" W
- #4: 45° 39' 11.91" N, 108° 44' 44.11" W
- #4b: 45° 39' 2.69" N, 108° 42' 51.76" W
- #4c: 45° 39' 11.91" N, 108° 44' 44.11" W
- #4d: 45° 39' 11.91" N, 108° 44' 44.11" W
- #4e: 45° 39' 34" N, 108° 42' 53" W
- #4f: 45° 40' 08.00" N, 108° 41' 38" W
- #4g: 45° 39' 34" N, 108° 42' 36" W
- #4h: 45° 39' 81" N, 108° 42' 13" W
- #4i: 45° 39' 34" N, 108° 42' 36" W
- #4j: 45° 39' 34" N, 108° 42' 36" W
- #4k: 45° 39' 34" N, 108° 42' 36" W
- #4l: 45° 39' 34" N, 108° 42' 36" W
- #4m: 45° 39' 34" N, 108° 42' 36" W
- #4n: 45° 39' 34" N, 108° 42' 36" W
- #4o: 45° 39' 34" N, 108° 42' 36" W
- #4p: 45° 39' 34" N, 108° 42' 36" W
- #4q: 45° 39' 34" N, 108° 42' 36" W
- #4r: 45° 39' 34" N, 108° 42' 36" W
- #4s: 45° 39' 34" N, 108° 42' 36" W
- #4t: 45° 39' 34" N, 108° 42' 36" W
- #4u: 45° 39' 34" N, 108° 42' 36" W
- #4v: 45° 39' 34" N, 108° 42' 36" W
- #4w: 45° 39' 34" N, 108° 42' 36" W
- #4x: 45° 39' 34" N, 108° 42' 36" W
- #4y: 45° 39' 34" N, 108° 42' 36" W
- #4z: 45° 39' 34" N, 108° 42' 36" W

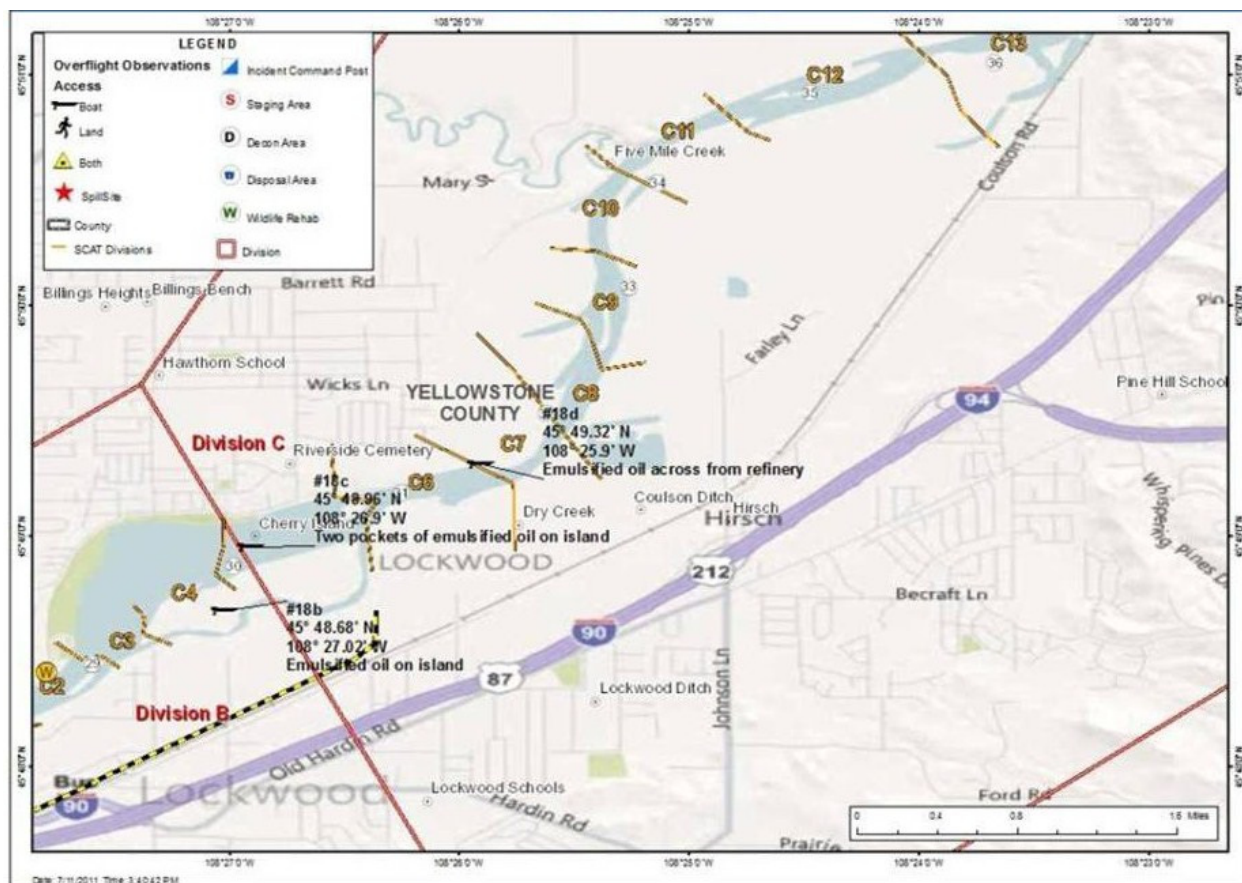
Scale: 0 0.35 0.7 1.4 Miles

Date: 7/11/2011 Time: 3:37:45 PM

Division B West Assessment and Monitoring Areas



Division B East Assessment and Monitoring Areas



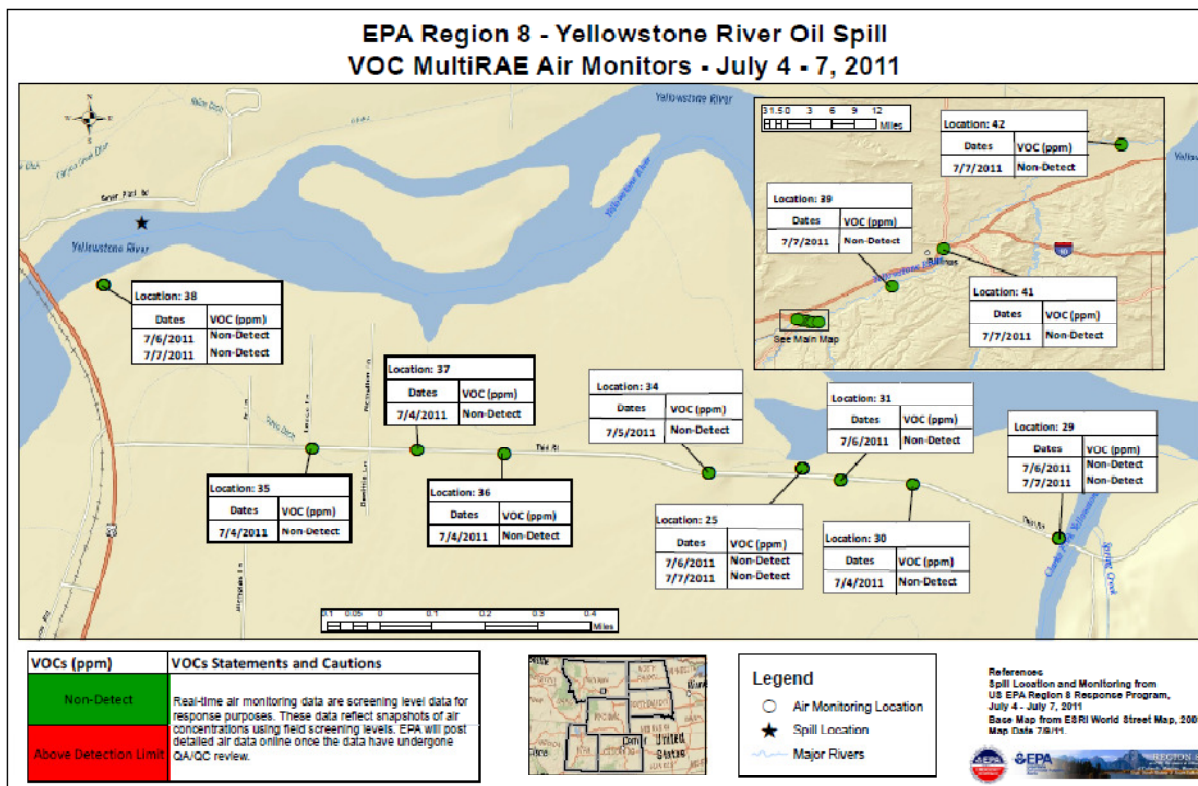
Sampling

Samples Collected July 11 2011

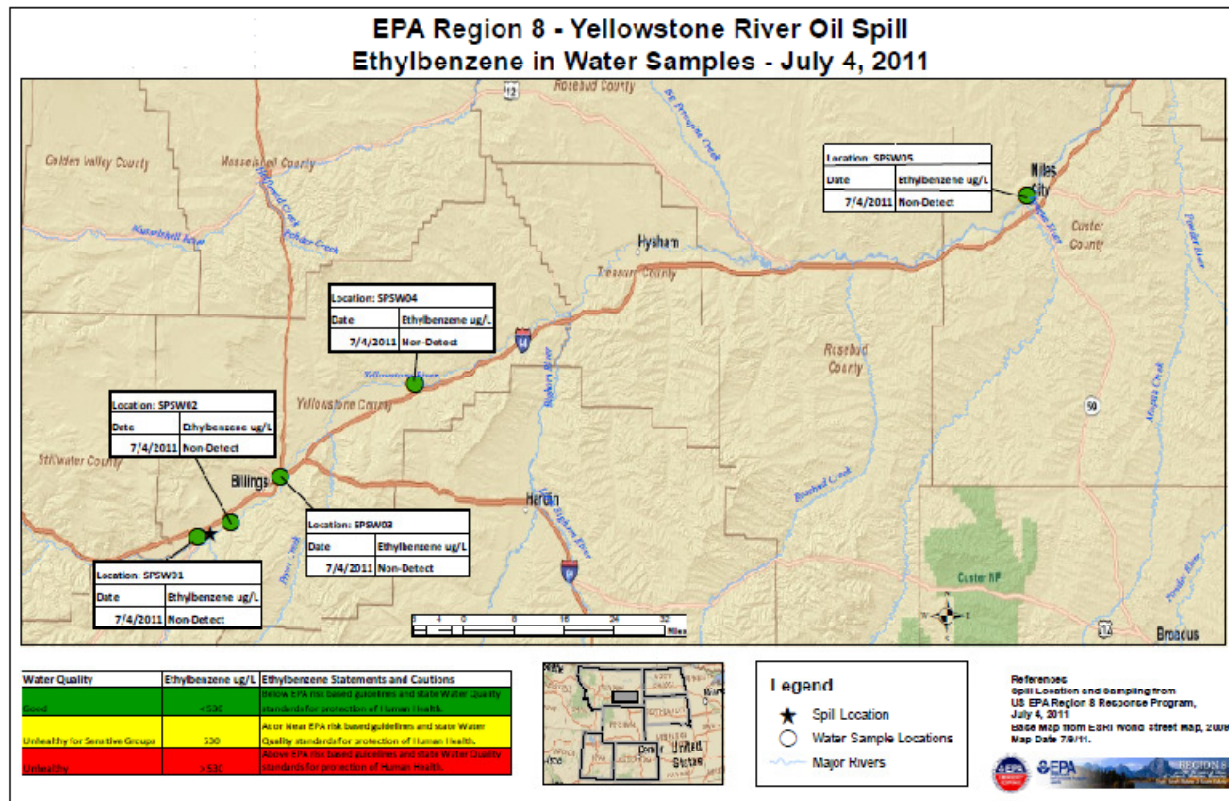
LATEST UPDATE: 07/12/11 AM			Date: 07/03/11- 07/09/11		Date: 07/10/11		Date: 07/11/11		TOTAL COLL'TE D TO DATE:
			START	CTEH	START	CTEH	START	CTEH	
Water		Surface	5		1				6
		B'ground		5		1			6
	Well	Drinking	4	35	4	2	7	5	57
		Irrigation	1	1					2
Soil									0
Sediment									0
Air			6	50		18		19	93
Product			3		1				4
Other Residential Water				10		5		3	18
Total			19	101	6	26	7	27	186
Daily Sample Total			120		32		34		
START % Confirmation			19		23		26		

	Community Air Monitoring Readings
Date: 07/03/11-07/09/11	
START	84
CTEH	532
Date: 07/10/11	
START	0
CTEH	61
Date: 07/11/11	
START	54
CTEH	33
TOTAL TO DATE:	731

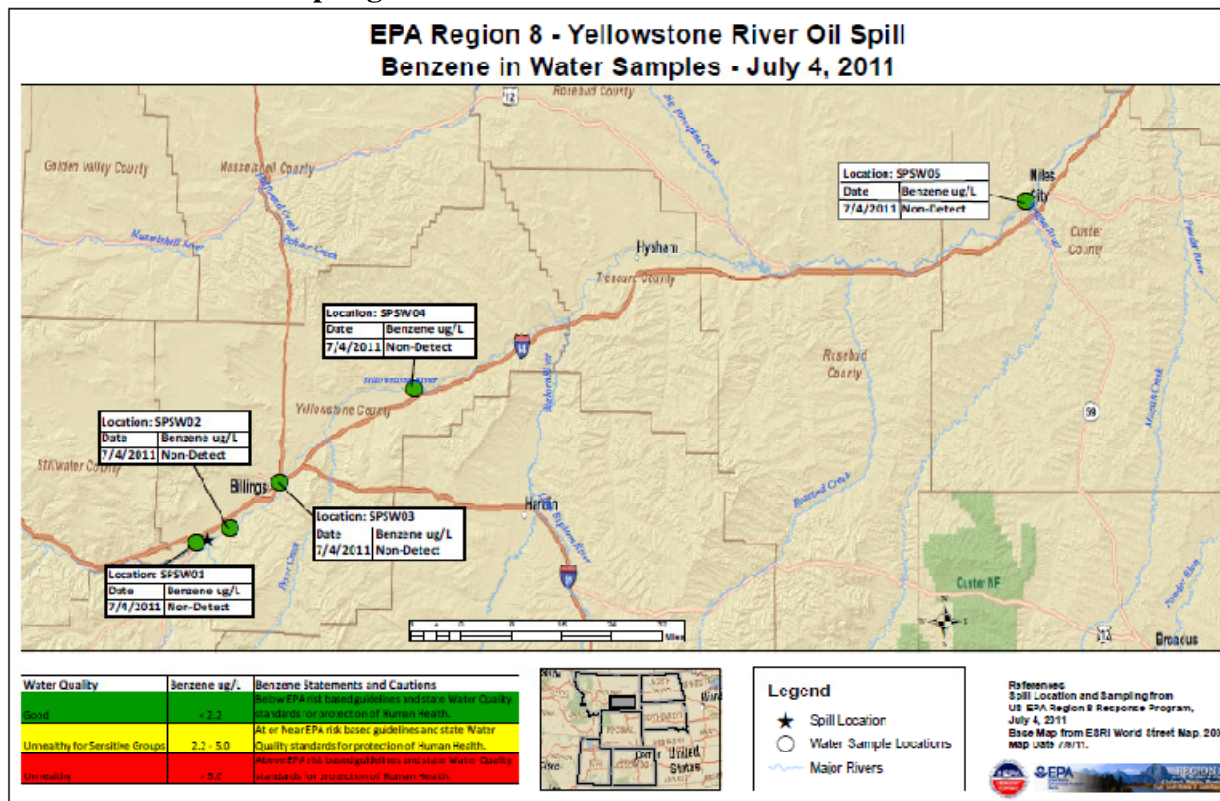
VOC MultiRAE Air Monitors



Ethylbenzene in Water Sampling Locations



Benzene in Water Sampling Locations



4.0 Additional Operations

Wildlife Reports

An oiled warbler found in a heavily oiled tree and a Woodhouse's toad were captured by International Bird Rescue (IBR) contractors today and are currently being stabilized in its rehabilitation center. A garter snake and a western toad were treated and released by IBR. Additionally, cleanup workers observed a deceased heavily oiled duck in the backwaters of the river at the end of the day. IBR will attempt to retrieve it first thing tomorrow morning. IBR staff continues efforts toward capture of a small group of moderately to heavily oiled geese which are exhibiting altered behavior and are suspected of suffering from hypothermia. Game cameras are in place and pre-baiting has been employed over the last 48 hours in preparation for the capture attempt. All safety provisions have been made for employing a propane cannon net when the birds have habituated to the baited site.

Morning aerial wildlife surveys occurred for the fifth consecutive day over the Yellowstone River. The Service continued to support EPA by embedding with Shoreline Cleanup and Assessment Technique teams. Service members also served as Resource Advisors to cleanup crews operating in potentially sensitive wildlife habitat. Going forward, the Service will be helping review work plans for long-term recovery, remediation and restoration.

5.0 Progress Metrics

All progress metrics in this are as reported by ExxonMobile unless otherwise indicated.

Boom/sorbent Report

Equipment	Staged	Assigned
Boom Available (ft)	56,724	34,600
Sorbent Rolls	20,304	2,848
Sorbent Pads	2,853	2,161
Sorbent	55	
Viscous Sweep	1,848	1,841

Soil and Debris Waste Tracking

Waste Stream	Disposed	Staged	Cumulative Quantity Shipped
Oily Liquids (bbls)	942	0	
Oily Solids (yd ³)		505	

Shoreline Impacts

Degree of Oiling	Miles Affected*
Very Light	6
Light	6
Medium	3
Heavy	
Other Locations	
Total	15

*Approximations based on aerial overflights

6.0 Planning Section

6.1 Environmental Unit/Data Management

- Coordinating with PRP Environmental Unit to define data management process
- Developing sampling plans for increased oversight sampling of ExxonMobile
- Staffing up for increased sampling and data management effort

7.0 Anticipated Activities for Next Reporting Period

The next reporting period (SITREP #4) will cover July 13, 2011 0700 to July 15, 2011 0700.

8.0 Logistics Section

- Coordinated with various other units within the ICS on multiple projects.

9.0 Safety Reports

Nothing to report in this reporting period

10.0 Liaison/ Public Information Officer

EPA will hold a community meeting at the Laurel High School on Wednesday, July 13th at 6:30 p.m. The high school is located at 203 East 8th Street in Laurel. At the event, EPA will provide an update on the cleanup and local public health representatives will address human health issues associated with the spill. In addition state and other federal agencies will be available to answer questions. Company representatives will also be available. An availability session to address specific needs will be held afterward. Media are encouraged to attend

11.0 Finance Section

The current FPN ceiling is \$1 Million. Approximately 42.6% of the ceiling (\$1,000,000) has been expended or obligated through July 10, 2011. The latest estimated burn rate is \$63,514.64 per day. These cost summaries reflect only EPA-funded expenditures for the incident.

**FPN E11809 - Silvertip Pipeline Oil Spill
As of: 07/10/2011**

START Contractor	Est. Expended	Est Burn Rate (Latest Daily)
URS (ceiling - \$225,000.00)	\$120,000.00	\$22,000.00
Response Contractor Sub-Totals	\$120,000.00	\$22,000.00
EPA Funded Costs:		
Total EPA Personnel Costs	\$168,048.00	\$14,004.00
Pollution Removal Funding Agreements:		
Total Other Agencies (Total \$375,000.00)	\$206,250.00	\$18,750.00
Sub-Totals	\$494,298.00	\$54,754.00
Indirect Cost (16.00%)	\$79,087.68	\$8760.64
Total Est. Oil Spill Cost	\$573,385.68	\$63,514.64
Oil Spill Ceiling authorized by USCG	\$1,000,000.00	
Oil Spill Ceiling Available Balance	\$426,614.32	
Est. Percentage Spent	42.6%	

SILVERTIP PIPELINE OIL SPILL

Situation Report 07/12/2011

The current FPN ceiling is \$1 Million. Approximately 37.1% of the ceiling (\$1,000,000) has been expended or obligated through July 11, 2011. The latest estimated burn rate is \$57,714.64 per day. These cost summaries reflect only EPA-funded expenditures for the incident.

FPN E11809 - Silvertip Pipeline Oil Spill

As of: 07/11/2011

START Contractor	Est. Expended	Est Burn Rate (Latest Daily)
URS (ceiling - \$250,000.00)	\$135,00 0.00	\$17,000.00
EPA Funded Costs:		
Total EPA Personnel Costs	\$182,052.00	\$14,004.00
Pollution Removal Funding Agreements:		
Total Other Agencies (Total \$375,000.00)	\$225,000.00	\$18,750.00
Sub-Totals	\$542,052.00	\$49,754.00
Indirect Cost (16.00%)	\$86,728.32	\$7960.64
Total Est. Oil Spill Cost	\$628,780.32	\$57,714.64
Oil Spill Ceiling authorized by USCG	\$1,000,000.00	
Oil Spill Ceiling Available Balance	\$371,219.68	
Est. Percentage Spent	37.1%	

14.0 Unified Command

U.S. EPA

ExxonMobile (Responsible Party)

Montana Dept. of Environmental Quality

15.0 Support Agencies

DOT

BLM

BIA

Yellowstone Co.

U.S. Fish and Wildlife Service

MT Dept. of Fish and Game

14.1 Congressional Presence

U.S. Congressman Denny Rehburg

U.S. Senator Max Baucus

U.S. Senator John Tester

15.0 Personnel On Site

Agency/Entity	Numbers Reported 7/12/11
EPA	13
START	13
USCG	4
USFWS	5
US DOT	0
BIA	0
BLM	1
Total	36

15.1 Additional Information

For additional information, please refer to: <http://www.epa.gov/yellowstoneriverspill/>

15.2 Reporting Schedule

SITREPs are issued on the first day of the Operational Period and will continue until the UC establishes a different reporting schedule.

SitReps are posted to:

R08_Documentation_Unit_Leader@epa.gov

