

3621 Southern Avenue	
PM <sub>2.5</sub> Max.	41.9 µg/m <sup>3</sup>
PM <sub>2.5</sub> Avg. <sup>2</sup>	20.4 µg/m <sup>3</sup>

Guard House (Unit 16)	
CO Max.	N/A
CO Avg.	N/A
LEL Max.	0.0%
LEL Avg. <sup>1</sup>	0.0%

Northeast (Unit 13)	
CO Max.	N/A
CO Avg.	N/A
LEL Max.	5.4%
LEL Avg. <sup>1</sup>	2.2%

- Legend**
- Multi-gas Monitor (CO & LEL)
  - Particulate Monitoring (Off-site PM<sub>2.5</sub>)
  - Fire Location
  - Carbide Industries Estimated Site Boundary



Notes:  
PM<sub>2.5</sub> readings were collected by Louisville Metro Air Pollution Control District. Units 15 and 16 multi-gas readings were collected by Louisville Fire Department. Units 5 and 6 were collected by Louisville Department of Public Health. Units 5 and 6 are not shown on figure. These units' locations are unknown and all LEL readings were 0.0%.

LEL threshold value is 10 %  
PM<sub>2.5</sub> off-site threshold values are:  
89 µg/m<sup>3</sup> instantaneous reading  
51 µg/m<sup>3</sup> 8-hour average  
36 µg/m<sup>3</sup> 24-hour average

Avg.<sup>1</sup> - Averaged over 2 hours  
Avg.<sup>2</sup> - Average of 24 hourly readings  
CO - Carbon monoxide  
LEL - Lower explosive limit  
Max. - Maximum  
µg/m<sup>3</sup> - Micrograms per cubic meter  
N/A - Data not collected for this day  
PM<sub>2.5</sub> - Particulate matter less than 2.5 micrometers in diameter  
% - Percentage

Map Source:  
Bing Maps, Hybrid Image Service, 2010



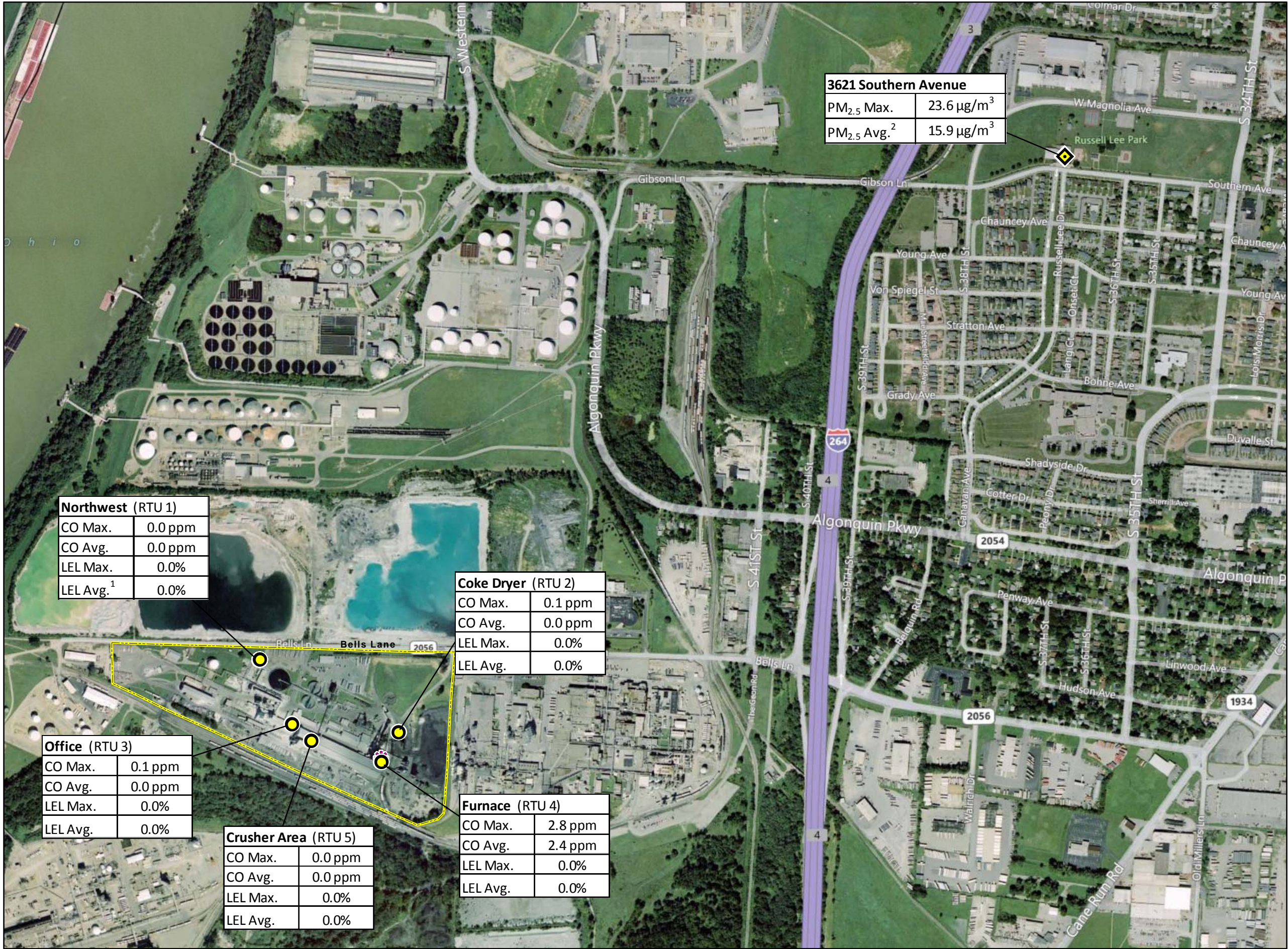
United States  
Environmental Protection Agency

CARBIDE INDUSTRIES FIRE  
4400 BELLS LANE,  
LOUISVILLE,  
JEFFERSON COUNTY,  
KENTUCKY  
TDD: TTEMI-05-001-0152

**FIGURE 3**  
**MONITORING LOCATIONS**  
**3/21/11**







3621 Southern Avenue	
PM <sub>2.5</sub> Max.	23.6 µg/m <sup>3</sup>
PM <sub>2.5</sub> Avg. <sup>2</sup>	15.9 µg/m <sup>3</sup>

Northwest (RTU 1)	
CO Max.	0.0 ppm
CO Avg.	0.0 ppm
LEL Max.	0.0%
LEL Avg. <sup>1</sup>	0.0%

Office (RTU 3)	
CO Max.	0.1 ppm
CO Avg.	0.0 ppm
LEL Max.	0.0%
LEL Avg.	0.0%

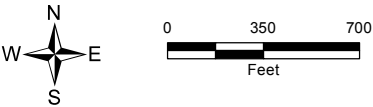
Crusher Area (RTU 5)	
CO Max.	0.0 ppm
CO Avg.	0.0 ppm
LEL Max.	0.0%
LEL Avg.	0.0%

Coke Dryer (RTU 2)	
CO Max.	0.1 ppm
CO Avg.	0.0 ppm
LEL Max.	0.0%
LEL Avg.	0.0%

Furnace (RTU 4)	
CO Max.	2.8 ppm
CO Avg.	2.4 ppm
LEL Max.	0.0%
LEL Avg.	0.0%

Legend

- Multi-gas Monitor (CO & LEL)
- Particulate Monitoring (Off-site PM<sub>2.5</sub>)
- Site Location
- Carbide Industries Approximate Property Boundary



Notes:  
PM<sub>2.5</sub> readings were collected by Louisville Metro Air Pollution Control District. RTU 1, 2, 3, 4, and 5 multi-gas readings were collected by CTEH.

CO threshold values are:  
200 ppm instantaneous reading  
50 ppm 8-hour average  
LEL threshold value is 10 %  
PM<sub>2.5</sub> off-site threshold values are:  
89 µg/m<sup>3</sup> instantaneous reading  
51 µg/m<sup>3</sup> 8-hour average  
36 µg/m<sup>3</sup> 24-hour average

Avg. - Averaged over 24 hours  
Avg.<sup>1</sup> - Averaged over 2 hours  
Avg.<sup>2</sup> - Average of 24 hourly readings  
CO - Carbon monoxide  
LEL - Lower explosive limit  
Max. - Maximum  
µg/m<sup>3</sup> - Micrograms per cubic meter  
PM<sub>2.5</sub> - Particulate Matter less than 2.5 micrometers in diameter  
ppm - Parts per million  
% - Percentage

Map Source:  
Bing Maps, Hybrid Image Service, 2010



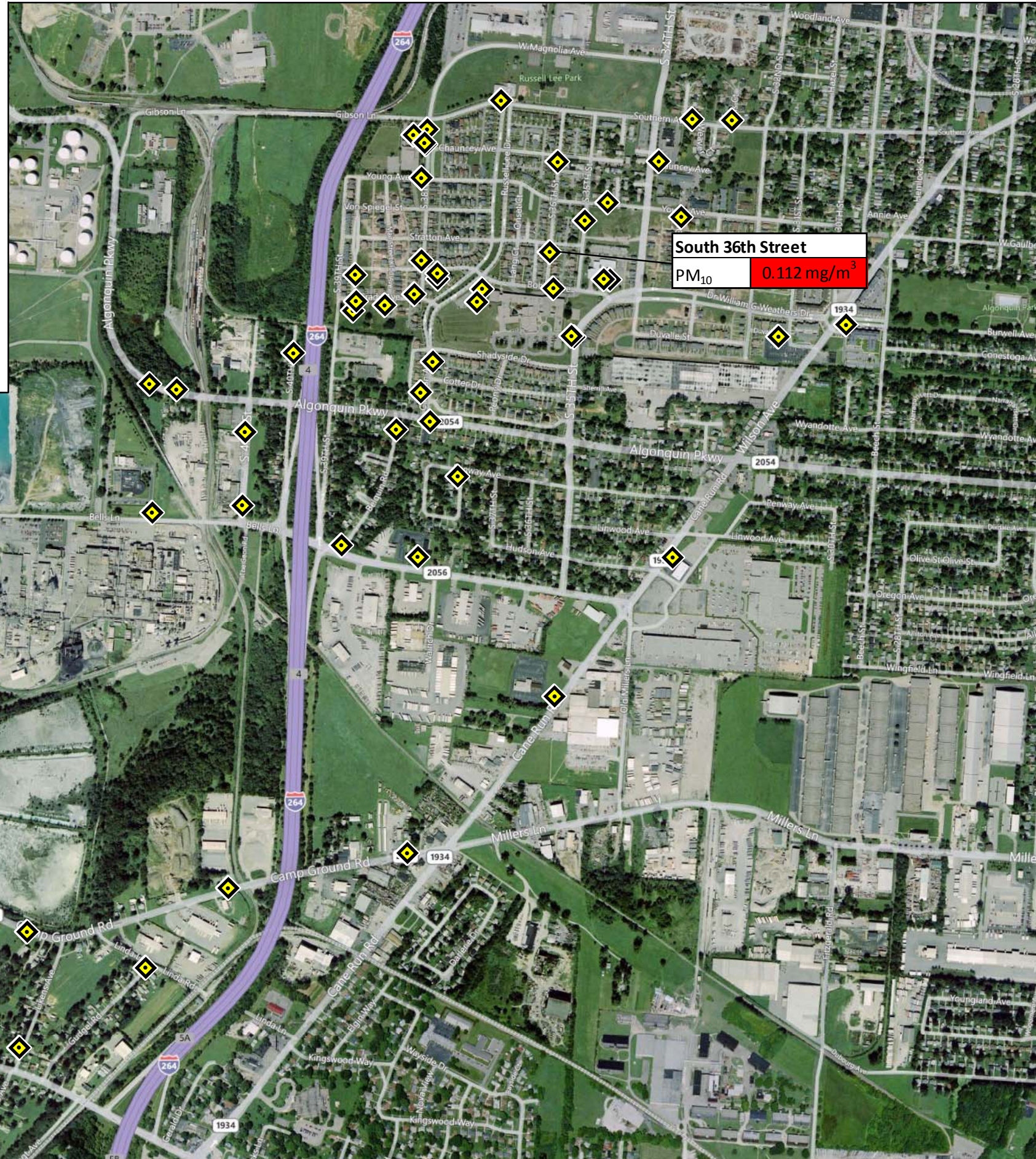
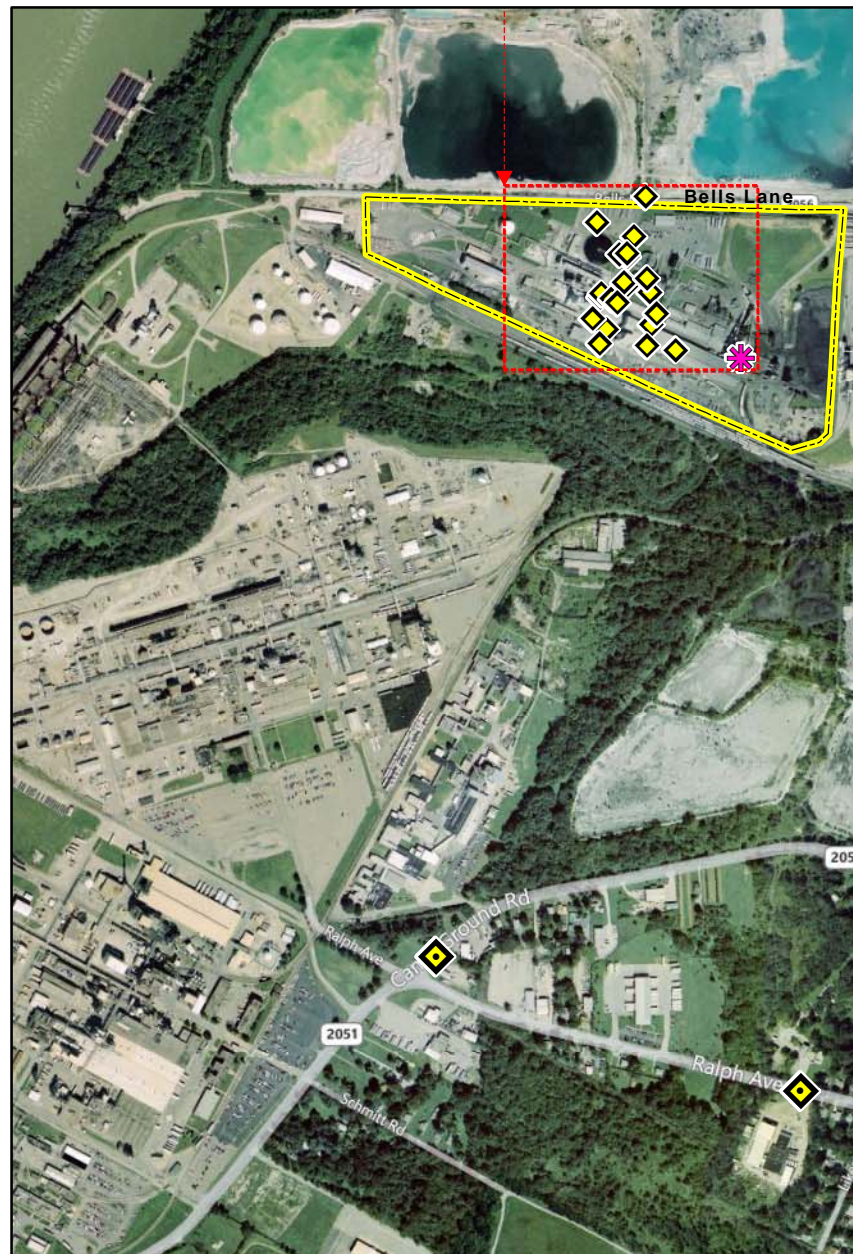
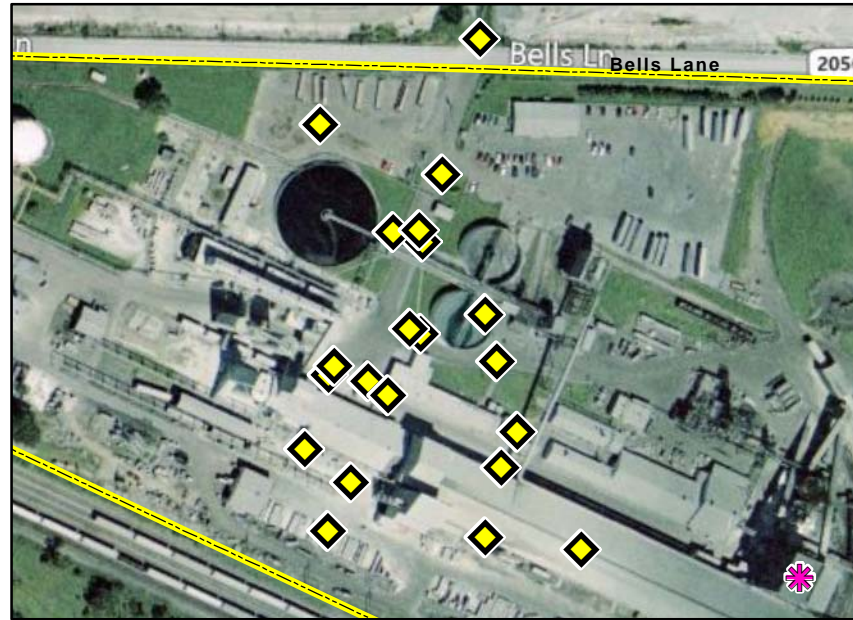
United States  
Environmental Protection Agency

CARBIDE INDUSTRIES FIRE  
4400 BELLS LANE,  
LOUISVILLE,  
JEFFERSON COUNTY,  
KENTUCKY  
TDD: TTEMI-05-001-0152

FIGURE 4  
MONITORING LOCATIONS  
3/22/11

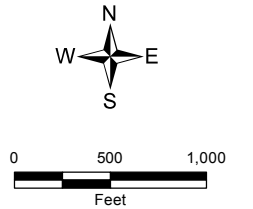






### Legend

- ◆ Particulate Monitoring (On-site PM<sub>10</sub>)
- ◆ Particulate Monitoring (Off-site PM<sub>10</sub>)
- ✱ Fire Location
- Reading exceeds threshold value
- Carbide Industries Estimated Site Boundary



Notes:  
PM<sub>10</sub> readings were collected by CTEH.  
PM<sub>10</sub> locations represent instantaneous readings.

PM<sub>10</sub> on-site threshold values are:  
526 µg/m<sup>3</sup> instantaneous reading  
300 µg/m<sup>3</sup> 8-hour average  
250 µg/m<sup>3</sup> 24-hour average  
PM<sub>10</sub> off-site threshold values are:  
89 µg/m<sup>3</sup> instantaneous reading  
51 µg/m<sup>3</sup> 8-hour average  
36 µg/m<sup>3</sup> 24-hour average

µg/m<sup>3</sup> - Micrograms per cubic meter  
mg/m<sup>3</sup> - Milligrams per cubic meter  
PM<sub>10</sub> - Particulate Matter less than 10 micrometers in diameter

Map Source:  
Bing Maps, Hybrid Image Service, 2010



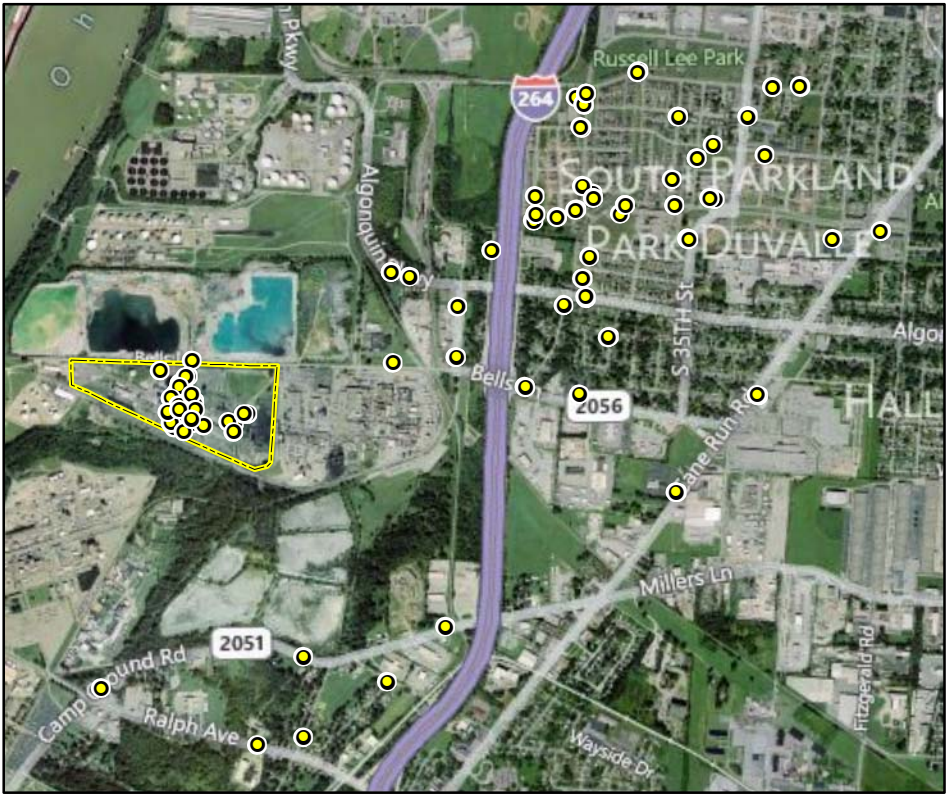
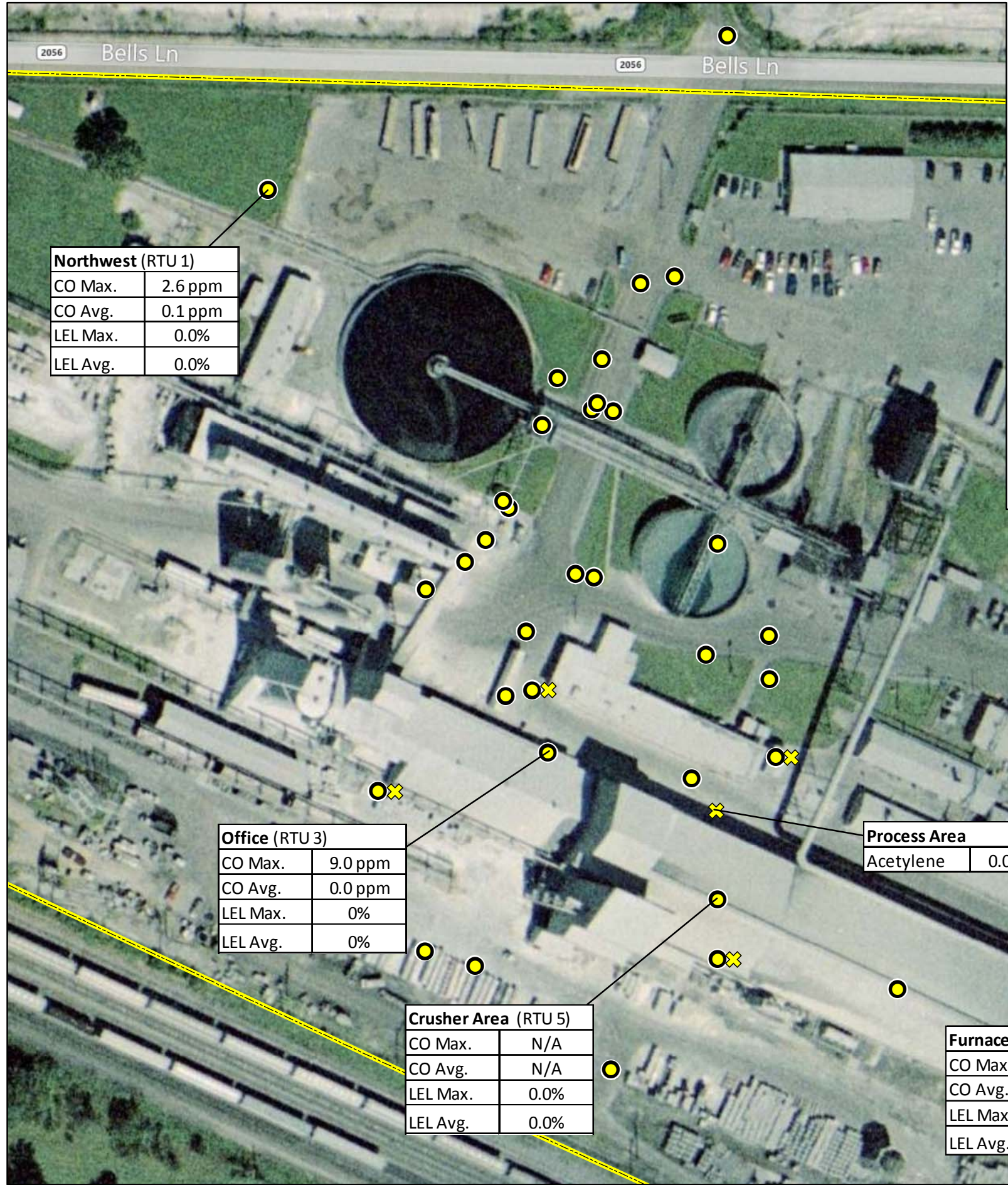
United States  
Environmental Protection Agency

CARBIDE INDUSTRIES FIRE  
4400 BELLS LANE,  
LOUISVILLE,  
JEFFERSON COUNTY,  
KENTUCKY  
TDD: TTEMI-05-001-0152

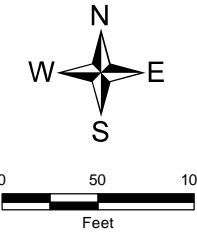
**FIGURE 5A**  
**PARTICULATE MONITORING**  
**LOCATIONS**  
**3/23/11**







- Legend**
- ✕ Colorimetric Detection Tube (Acetylene)
  - Multi-gas Monitor (CO & LEL)
  - ✳ Site Location
  - ▭ Carbide Industries Estimated Site Boundary



**Notes:**  
Colorimetric detection tube samples and multi-gas readings were collected by CTEH. All multigas and detection tube locations are instantaneous with exception of AreaRAE units RTU 1, 2, 3, 4, 5. Acetylene was only detected at one location.

CO threshold values are:  
200 ppm instantaneous reading  
50 ppm 8-hour average  
LEL threshold value is 10 %

Avg. - Averaged over 24 hours  
CO - Carbon monoxide  
LEL - Lower explosive limit  
Max. - Maximum  
mg/m<sup>3</sup> - Milligrams per cubic meter  
N/A - Data not collected for this day  
ppm - Parts per million  
% - Percentage

Map Source:  
Bing Maps, Hybrid Image Service, 2010



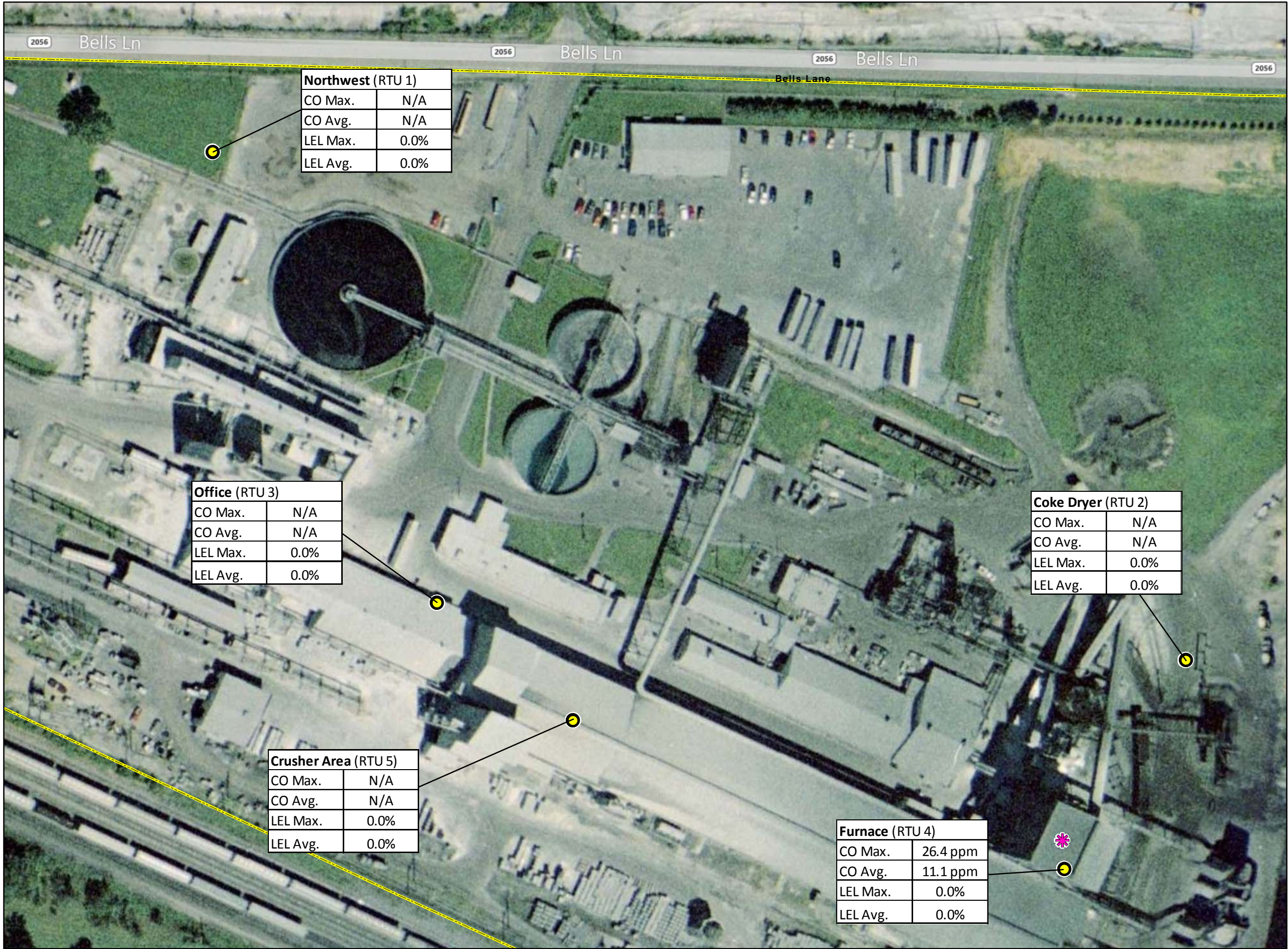
 United States  
Environmental Protection Agency

CARBIDE INDUSTRIES FIRE  
4400 BELLS LANE,  
LOUISVILLE,  
JEFFERSON COUNTY,  
KENTUCKY  
TDD: TTEMI-05-001-0152

**FIGURE 5B  
MONITORING LOCATIONS  
3/23/11**

 TETRA TECH





Northwest (RTU 1)	
CO Max.	N/A
CO Avg.	N/A
LEL Max.	0.0%
LEL Avg.	0.0%

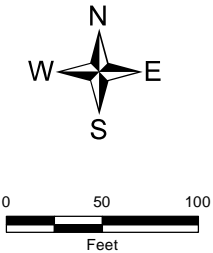
Office (RTU 3)	
CO Max.	N/A
CO Avg.	N/A
LEL Max.	0.0%
LEL Avg.	0.0%

Crusher Area (RTU 5)	
CO Max.	N/A
CO Avg.	N/A
LEL Max.	0.0%
LEL Avg.	0.0%

Furnace (RTU 4)	
CO Max.	26.4 ppm
CO Avg.	11.1 ppm
LEL Max.	0.0%
LEL Avg.	0.0%

Coke Dryer (RTU 2)	
CO Max.	N/A
CO Avg.	N/A
LEL Max.	0.0%
LEL Avg.	0.0%

- Legend**
- Multi-gas Monitor (CO & LEL)
  - ✱ Site Location
  - ▭ Carbide Industries Approximate Property Boundary

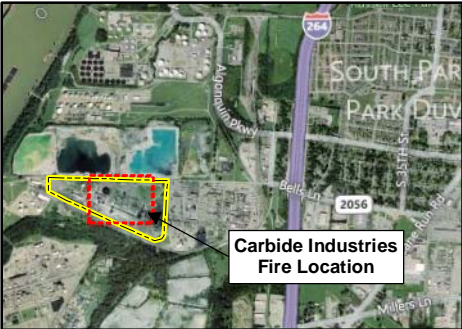


Notes:  
Multi-gas readings were collected by CTEH

CO threshold values are:  
200 ppm instantaneous reading  
50 ppm 8-hour average  
LEL threshold value is 10 %

Avg. - Averaged over 24 hours  
CO - Carbon monoxide  
LEL - Lower explosive limit  
Max. - Maximum  
N/A - Data not collected for this day  
ppm - Parts per million  
% - Percentage

Map Source:  
Bing Maps, Hybrid Image Service, 2010



United States  
Environmental Protection Agency

CARBIDE INDUSTRIES FIRE  
4400 BELLS LANE,  
LOUISVILLE,  
JEFFERSON COUNTY,  
KENTUCKY  
TDD: TTEMI-05-001-0152

**FIGURE 6**  
**MONITORING LOCATIONS**  
**3/24/11**

