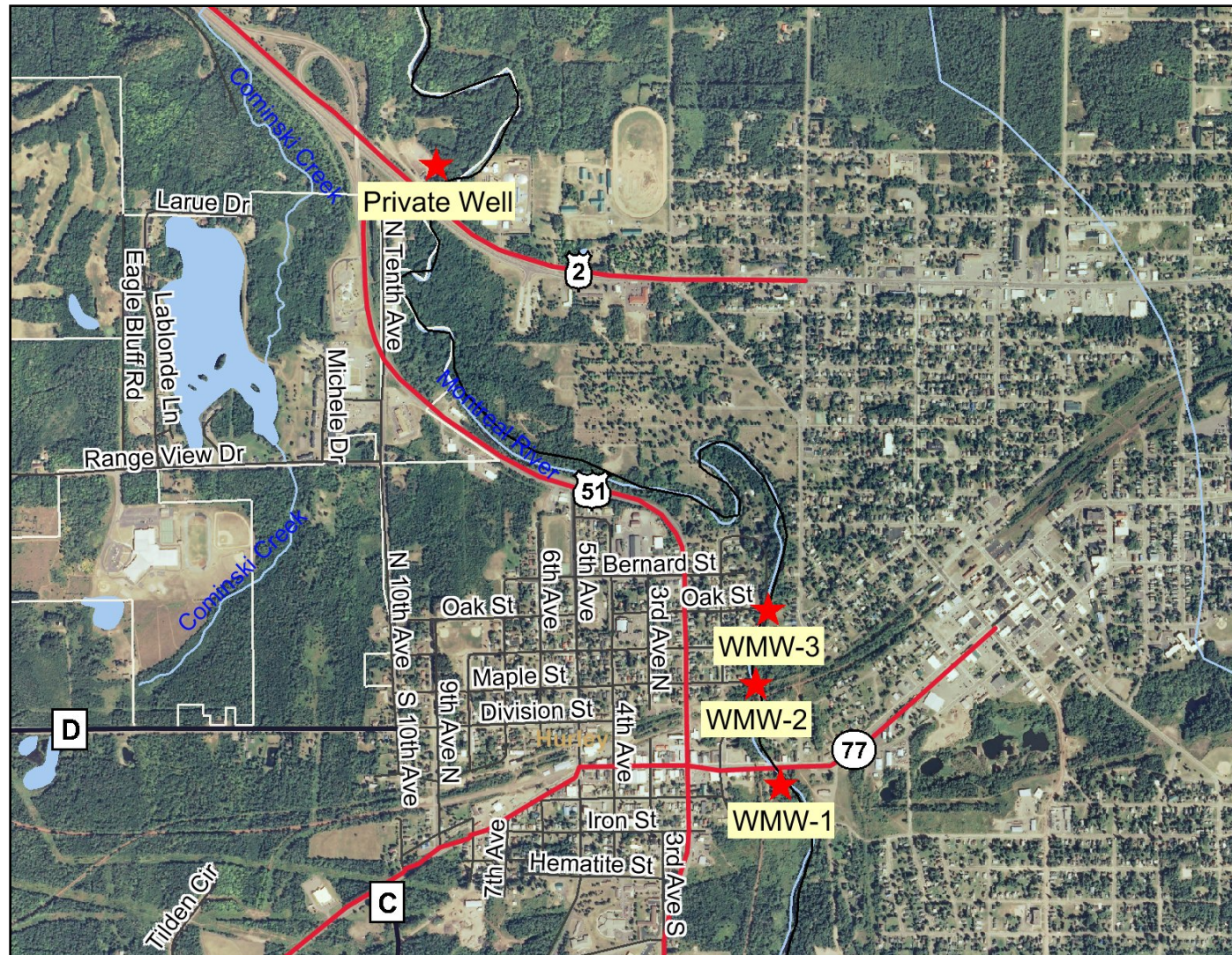


Figure 4 - Groundwater Sampling Locations



Legend

- County Boundary
- ✕ Railroads
- County Roads (WDOT)
- County Trunk Highway
- State and U.S. Highways (WDOT)
- State Trunk Highway
- US Highway
- Interstate Highways (WDOT)
- Interstate Highway
- Local Roads (WDOT)
- Civil Towns
- Civil Town
- 24K Open Water
- 24K Rivers and Shorelines
- Municipalities

0 2000 4000 6000 ft.

Map created on Dec 28, 2010

Note: Not all RR Sites have been geo-located yet.



Scale: 1:20,534

This map is a user generated static output from an Internet mapping site and is for general reference only. Data layers that appear on this map may or may not be accurate, current, or otherwise reliable. THIS MAP IS NOT TO BE USED FOR NAVIGATION.