

---

# DRAFT – Phase I Environmental Site Assessment Report – Kuhlman Diecasting Site

Stanley, Kansas



---

## Appendix A– Site Figures

---

Submitted By:



---

Environment International Government Ltd.  
5505 34<sup>th</sup> Ave. NE  
Seattle, WA 98105  
Phone: (206)525-3362 Fax: (206)525-0869  
Gwen.Porus@eigov.us



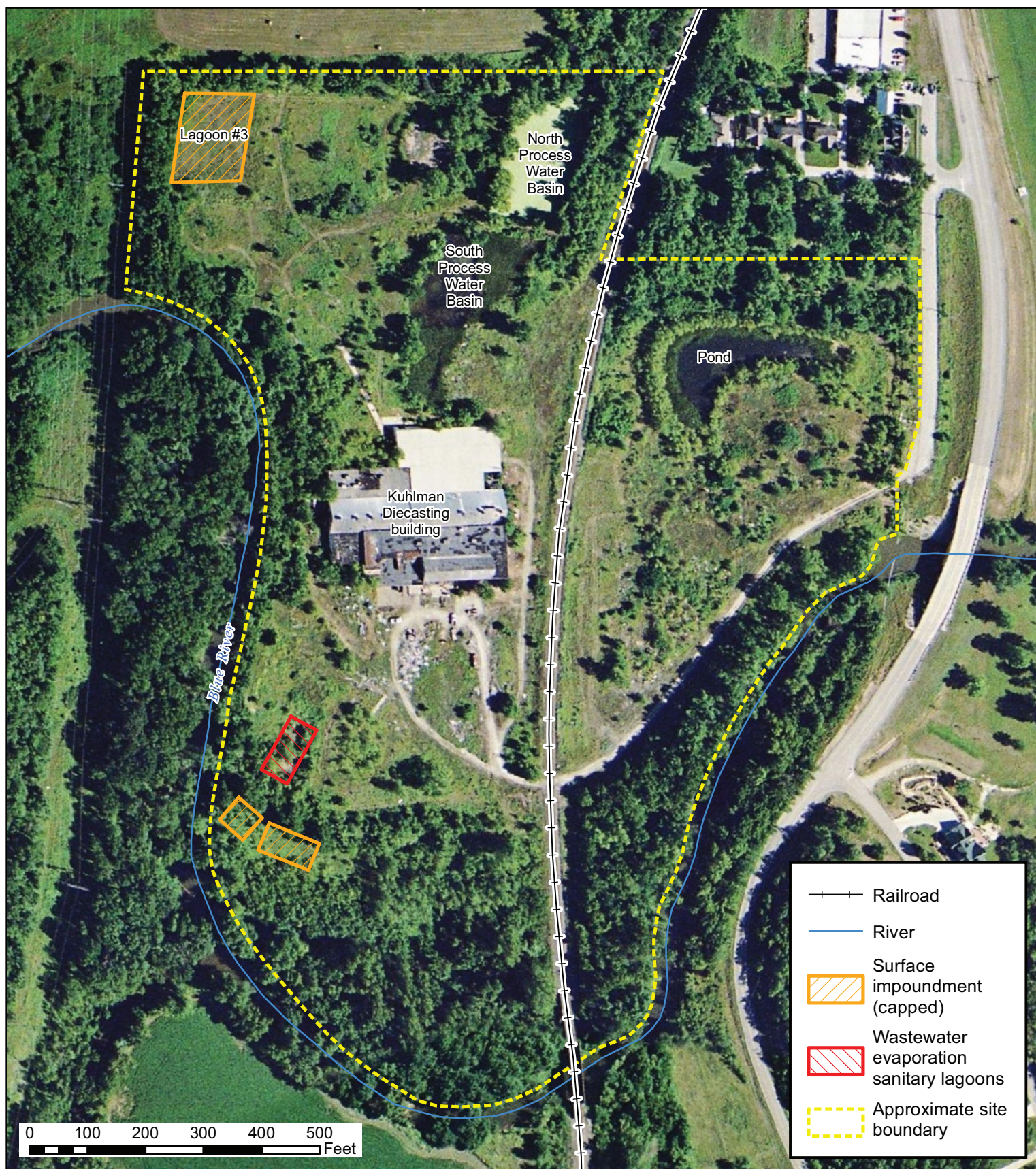


Figure 2  
Site Aerial Map

Kuhlman Diecasting Site, Stanley, Kansas