
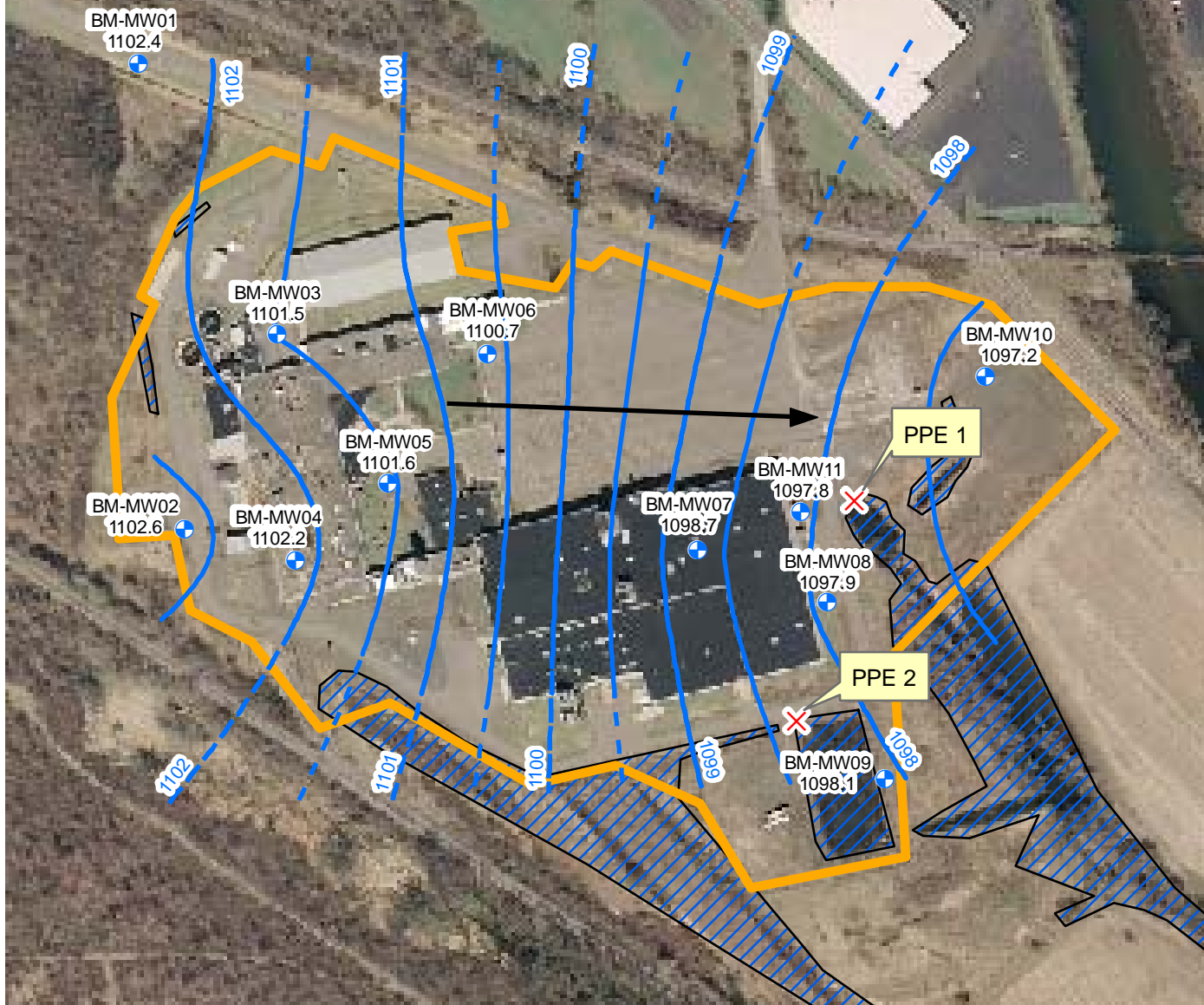
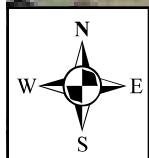
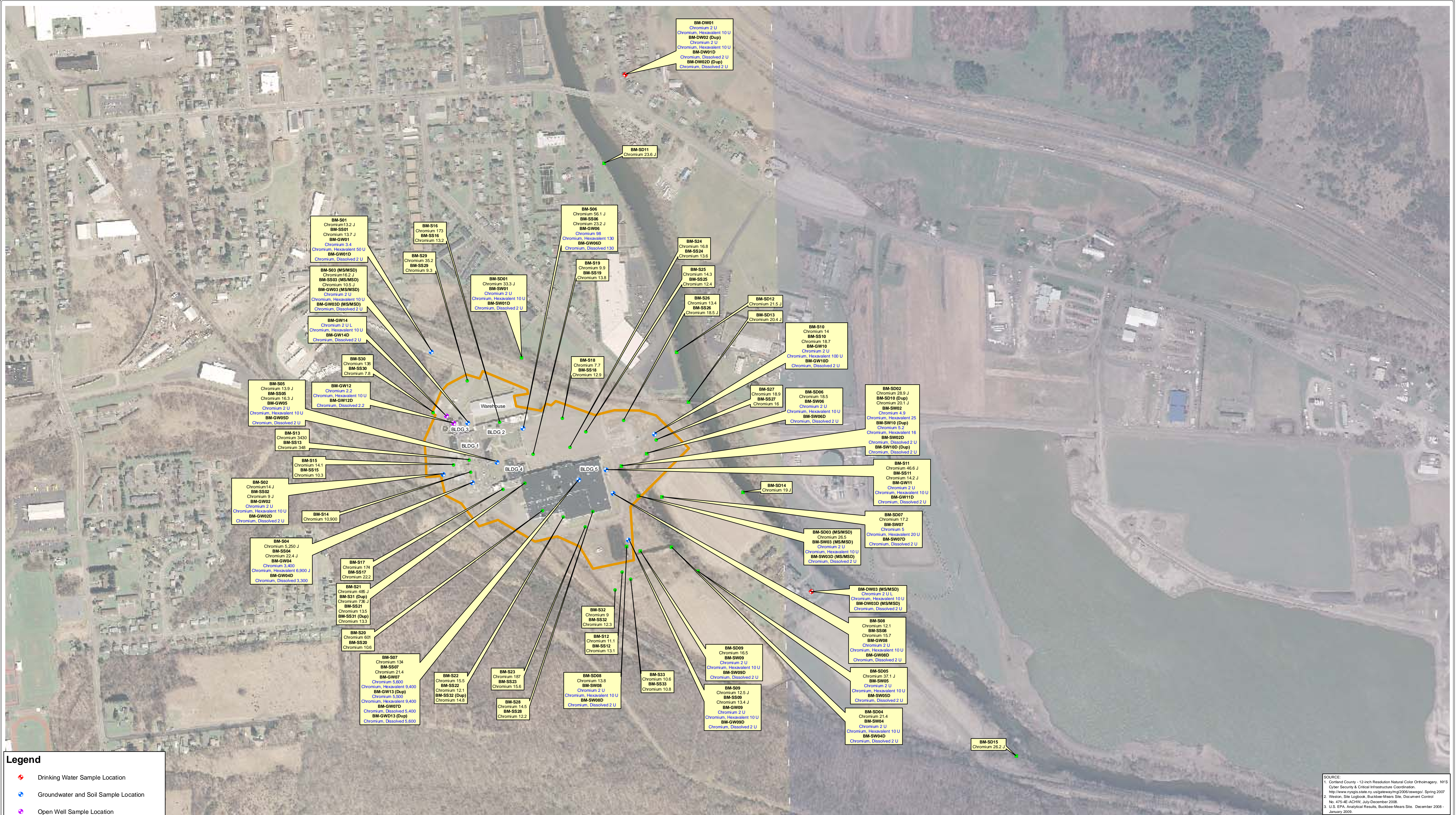


<p>LEGEND:</p> <p> Site Location</p> <p>National Geographic TOPO! U.S. Geologic Survey (USGS). 7.5 Minute Series (Topographic) Quadrangles: Cortland, NY, 1955.</p>	<p>TITLE:</p> <p>Site Location Map Buckbee-Mears City of Cortland Cortland County, NY</p>
<p>PROJECT:</p> <p>Buckbee-Mears</p>	
<p>CLIENT NAME:</p> <p>EPA</p>	<p>DATE:</p> <p>March 2009</p> <p>FIGURE #:</p> <p>1</p>





Legend

Drinking Water Sample Location

Groundwater and Soil Sample Location

Open Well Sample Location

Sediment and Surface Water Sample Location

Soil Sample Location

Approximate Fenceline

134

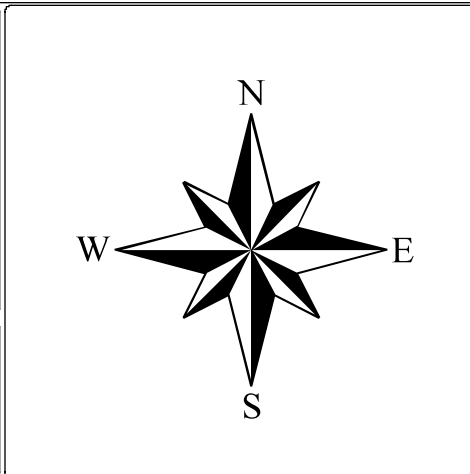
Results in milligrams per kilogram (mg/kg)

5,500

Results in micrograms per liter (ug/L)

Notes:
1. J - Estimated Value
2. U - Undetected Value at the Limit Shown
3. L - Result Might be Biased Low

Weston Solutions, Inc.
205 Campus Drive Edison, New Jersey 08837-3939
TEL: (732) 417-5800 Fax: (732) 417-5801
<http://www.westonsolutions.com>



REPORT DATE: August 2009	PROJECT MANAGER: G. Gilliland	CLIENT NAME: EPA
DRAWING: PATH: P:\SAT2\Buckbee_Mears\GIS\MXD	CHECKED BY: G. Gilliland	
REVISION No. 0	CONTRACT No. EP-S5-06-04 DELIVERY ORDER NO.	PROJECT NAME: Buckbee-Mears Integrated Assessment
WORK ORDER No. 20405.012.013.0475.00	DRAWN/MODIFIED BY: J. Lynes DATE CREATED: 12/12/2008	

DRAWING TITLE:

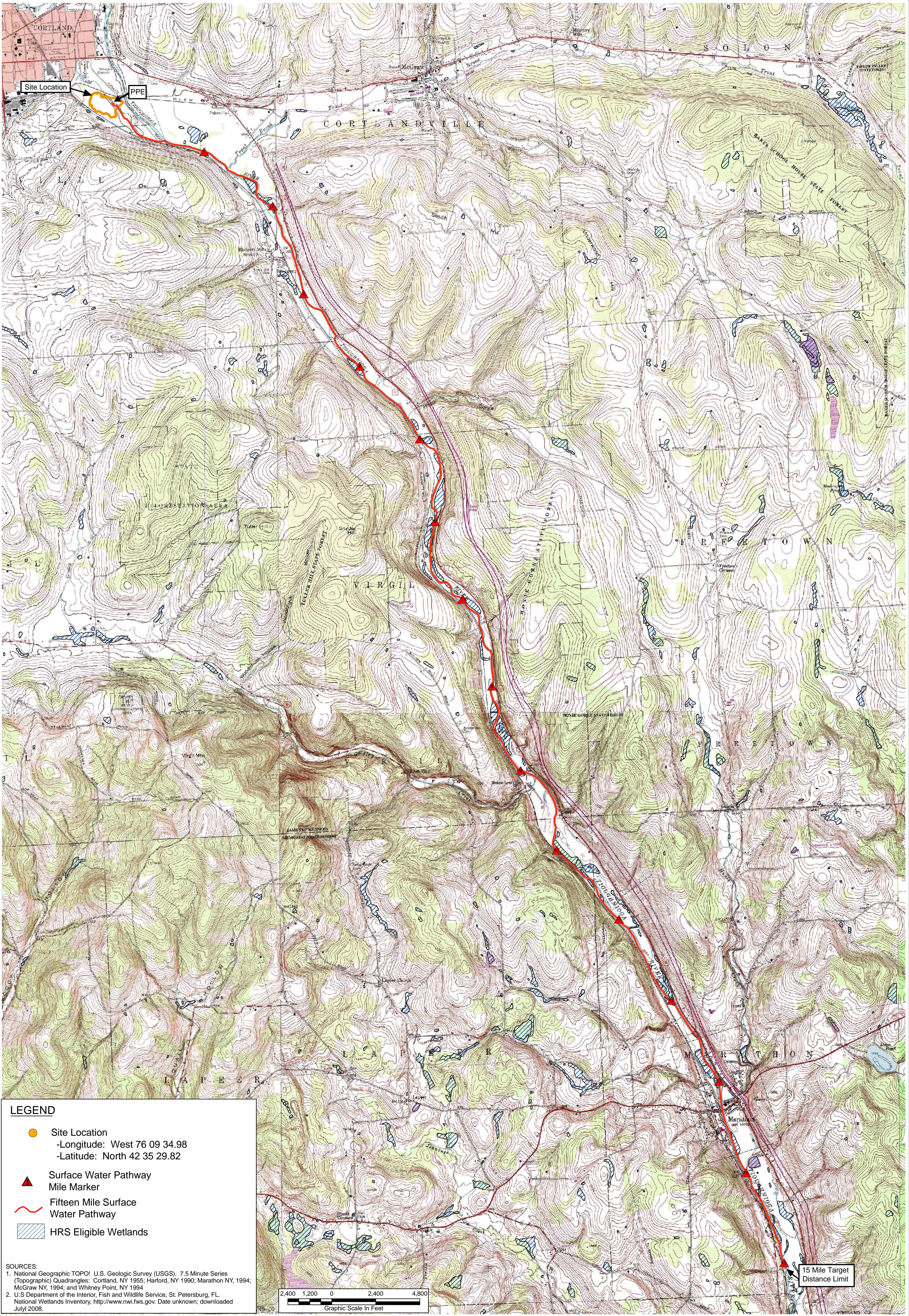
Sample Location And
Chromium Analytical Results Map
Buckbee-Mears
November - December 2008
Cortland, Cortland County, NY

FIGURE:
3

SCALE:
1" = 300'

DATE:
08/04/2009

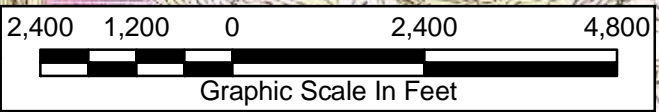
SOURCE:
1. Cortland County - 12-inch Resolution Natural Color Orthomography. NYS
Cyber Security & Critical Infrastructure Coordination
<http://www.nysgis.state.ny.us/gatewayimg/2006/05wgo/> Spring 2007
2. Weston, Site Logbook, Buckbee-Mears Site, Document Control
No. 475-4E-ACRIV, July-December 2008
3. U.S. EPA, Analytical Results, Buckbee-Mears Site, December 2008 -
January 2009.



LEGEND

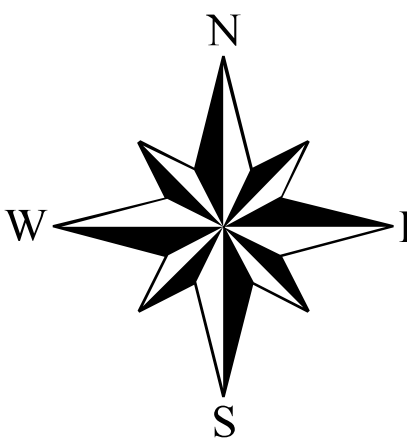
- Site Location
-Longitude: West 76 09 34.98
-Latitude: North 42 35 29.82
- ▲ Surface Water Pathway
Mile Marker
- ~ Fifteen Mile Surface
Water Pathway
- ▨ HRS Eligible Wetlands

SOURCES:
1. National Geographic TOPO! U.S. Geologic Survey (USGS). 7.5 Minute Series (Topographic) Quadrangles: Cortland, NY 1955; Harford, NY 1990; Marathon NY, 1994; McGraw NY, 1994; and Whitney Point, NY 1994.
2. U.S. Department of the Interior, Fish and Wildlife Service, St. Petersburg, FL. National Wetlands Inventory, <http://www.nwi.fws.gov>. Date unknown; downloaded July 2008.



Weston Solutions, Inc.

205 Campus Drive Edison, New Jersey 08837-3939
TEL: (732) 417-5800 Fax: (732) 417-5801
<http://www.westonsolutions.com>



REPORT DATE:
March 2009

DRAWING:
05923_BM_15_mile_Pathway.mxd
PATH:
P:\SAT2\Buckbee_Mears\GIS\MXD

REVISION No:
0

WORK ORDER No:
20405.012.013.0475.00

PROJECT MANAGER:
G. Gilliland

CHECKED BY:
G. Gilliland

CONTRACT No.
EP-S5-06-04

DRAWN/MODIFIED BY:
Jeff Lynes
DATE CREATED:
08/06/2008

CLIENT NAME:

EPA

PROJECT NAME:

Buckbee-Mears

DRAWING TITLE:

15-Mile Surface Water Pathway Map
Buckbee-Mears
City of Cortland
Cortland County, NY

FIGURE:
5

SCALE:
1" = 2400'

DATE:
03/13/2009