

EMERGENCY RESPONSE REPORT
FOR
NEXEO SOLUTIONS
3101 WOOD DRIVE
GARLAND, DALLAS COUNTY, TEXAS

Prepared for

U.S. Environmental Protection Agency Region 6
Linda Carter, Project Officer
1445 Ross Avenue
Dallas, Texas 75202

Contract No. EP-W-06-042
TDD No. TO-0001-12-11-05
WESTON W.O. No. 20406.012.001.0786.01
NRC No. 1030866
CERCLIS No. N/A
FPN: No. N/A
EPA OSC: Mike McAteer
START-3 PTL: Alex Byrum

Prepared by

Weston Solutions, Inc.
Robert Beck, VP, P.E., Program Manager
70 N.E. Loop 410, Suite 600
San Antonio, Texas 78216
(210) 308-4300

31 December 2012

PROJECT SUMMARY

The U.S. Environmental Protection Agency (EPA) Region 6 Superfund Technical Assessment Response Team (START-3) contractor, Weston Solutions, Inc. (WESTON®) was activated by EPA Region 6 Prevention and Response Branch (EPA-PRB) under Contract Number EP-W-06-042, Technical Direction Document (TDD) No. TO-0001-12-11-05 (Attachment I) to initiate a Tier 2 level response at the Nexeo Solutions site at approximately 1600 hours on 16 November 2012.

The Region 6 EPA-PRB learned of a facility fire via the media at Nexeo Solutions, located at 3101 Wood Drive in Garland, Dallas County, Texas. Upon arrival, the EPA conducted air monitoring in residential neighborhoods downwind of the incident, met and coordinated response actions with the City of Garland Fire Department, City of Garland Health Department, Texas Commission of Environmental Quality (TCEQ), and representatives with Nexeo Solutions, the potentially responsible party (PRP). On 19 November 2012, the EPA team demobilized from the site.

The EPA On-scene Coordinator (OSC) was Mike McAteer, and the START-3 Project Team Leader (PTL) was Alex Byrum.

☐

The EPA Task Monitor did not provide final approval of this report prior to the completion date of the work assignment. Therefore, Weston Solutions, Inc. has submitted this report absent the Task Monitor's approval.

☒

The EPA Task Monitor has provided final approval of this report. Therefore, Weston Solutions, Inc. has submitted this report with the Task Monitor's approval.

TABLE OF CONTENTS

EMERGENCY RESPONSE REPORT

PROJECT SUMMARY

TABLE OF CONTENTS

1. INTRODUCTION
2. BACKGROUND
3. ACTION TAKEN
4. LIST OF ATTACHMENTS

1. INTRODUCTION

At approximately 1600 hours on 16 November 2012, EPA-PRB learned of a fire, via the media, located at Nexeo Solutions facility, the PRP (potentially responsible party), in Garland, Dallas County, Texas. An EPA team was dispatched to the scene to conduct a Tier 2 response and to perform air monitoring in residential neighborhoods downwind of the incident and at the site location, and to provide written and photographic documentation of response activities.

Geographic coordinates of the incident location Latitude 32.887114° North and Longitude 96.676036° West were determined by using geographic information system (GIS) software based on the World Geodetic System – 1984 (WGS-84).

2. BACKGROUND

Nexeo Solutions is a chemical blending, distribution, and permitted waste storage facility, located at 3101 Wood Drive, Garland, Dallas County, Texas (Attachments A and B). On 16 November 2012, PRP representatives reported a fire had broken out due to unknown causes at a vehicle loading station on their facility, creating a smoke plume that drifted off-site and over downwind residential neighborhoods. The City of Garland Fire Department responded to the incident, issued a mandatory evacuation of a one-half mile radius of the incident location, and extinguished the fire using advanced firefighting foam (AFFF). At the time of the incident, the wind direction was from the northeast at between 10 and 15 miles per hour. Smoke from the fire traveled in a south-westerly direction toward residential neighborhoods in northeast Dallas.

3. ACTIONS TAKEN

On 16 November 2012, an EPA team was dispatched to a fire at Nexeo Solutions facility, located at 3101 Wood Drive, Garland, Dallas County, Texas. At 1745 hours, the EPA team arrived at the incident location and performed air monitoring at the incident location and residential neighborhoods downwind of the smoke plume. EPA air monitored for the following constituents: phosphine (PH₃), nitrogen dioxide (NO₂), lower explosive limit (LEL), oxygen (O₂), chlorine (Cl₂), sulfur dioxide (SO₂), ammonia (NH₃), hydrogen cyanide (HCN), volatile organic compounds (VOCs), carbon monoxide (CO), hydrogen sulfide (H₂S), and airborne particulates

utilizing Personal Data Rams. The results of the monitoring established that the contaminants being monitored either were at background levels or not detected at any concentration.

The City of Garland Public Works representatives placed sorbent boom in the spill pathway and built an earthen dam down gradient of the incident location in an unnamed creek at the bridge on Shiloh Road (Attachment C). Fire water runoff entered a storm water drain east of the incident site along Wood Drive that empties into a drainage ditch that flows into the unnamed creek. PRP contractors mobilized pumps and equipment to the site to remove and store the fire water runoff from the unnamed creek on-site until samples were collected and analyzed for possible contaminants.

On 19 December 2012, an unknown amount of oil was discovered pooled in a drainage ditch leading to the unnamed creek; no oil was observed impacting the creek. PRP contractors removed the oil via a vacuum truck and stored it on-site in tanks. A second earthen berm was constructed and sorbent boom was placed at the confluence of the drainage canal and the unnamed creek to prevent migration of oil downstream prior to removal.

Analysis of collected samples was performed for total petroleum hydrocarbons (TPH) and toluene and xylenes, which were slightly above detection limits. Analytical results of background samples from the unnamed creek did not indicate elevated concentrations of TPH or toluene and xylenes. On 19 December 2012, after additional sampling analysis of creek water did not indicate elevated levels of toluene and xylenes, TCEQ representatives granted the PRP permission to remove the earthen dams. The PRP disposed of the stored fire water runoff from the creek at Agricultural Services, Inc. facility located in Hutchins, Dallas County, Texas.

On 19 December 2012, after determining that further documentation of PRP response activities was unnecessary, EPA OSC Mike McAteer released START-3 from the site.

4. LIST OF ATTACHMENTS

- A. Site Location Map
- B. Site Area Map
- C. Site Layout Map

D. Air Monitoring Location Map

E. Digital Photographs

F. NRC Report No. 1030866

G. POLREP

H. Site Logbook

I. TDD No. TO-0001-12-11-05

ATTACHMENT A

Site Location Map



US EPA REGION 6

ATTACHMENT A

SITE LOCATION MAP

NEXEO SOLUTIONS
3101 WOOD DRIVE
 GARLAND, DALLAS COUNTY, TEXAS

DATE:

NOV 2012

W.O. #

20406.012.001.0786.01

SCALE:

NOT TO SCALE

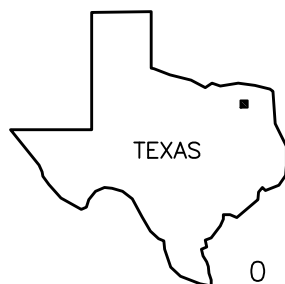
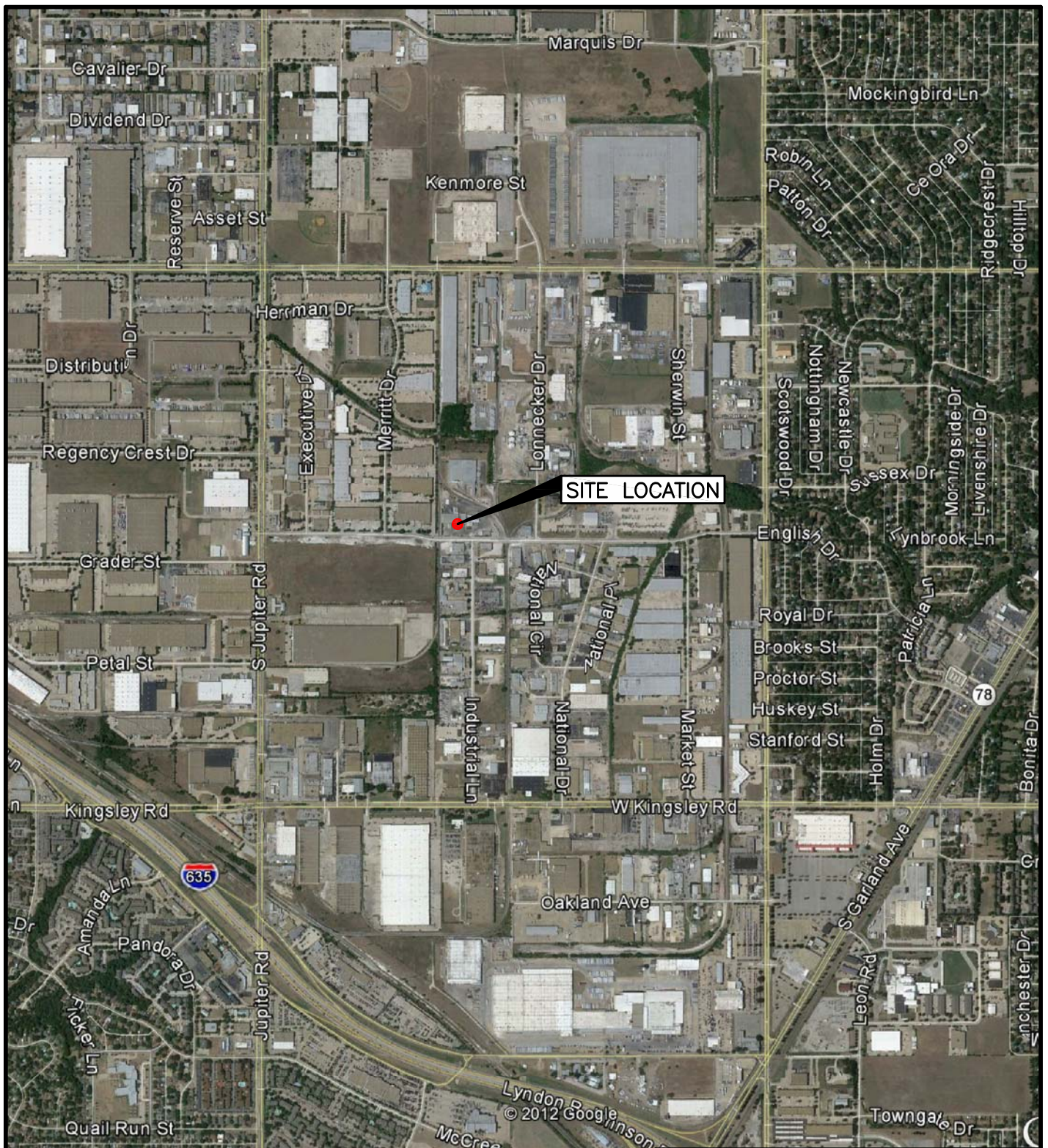
SOURCE: MICROSOFT STREETS 2009.

SOURCE: MICROSOFT
NRC No.: 1030866

TDD No.: TO-0001-12-11-05

ATTACHMENT B

Site Area Map



0 750 1500

SCALE IN FEET

SOURCE: GOOGLE EARTH PRO AERIAL 2012.
NRC No.: 1030866
TDD No.: TO-0001-12-11-05



US EPA REGION 6

ATTACHMENT B SITE AREA MAP

NEXEO SOLUTIONS
3101 WOOD DRIVE
GARLAND, DALLAS COUNTY, TEXAS

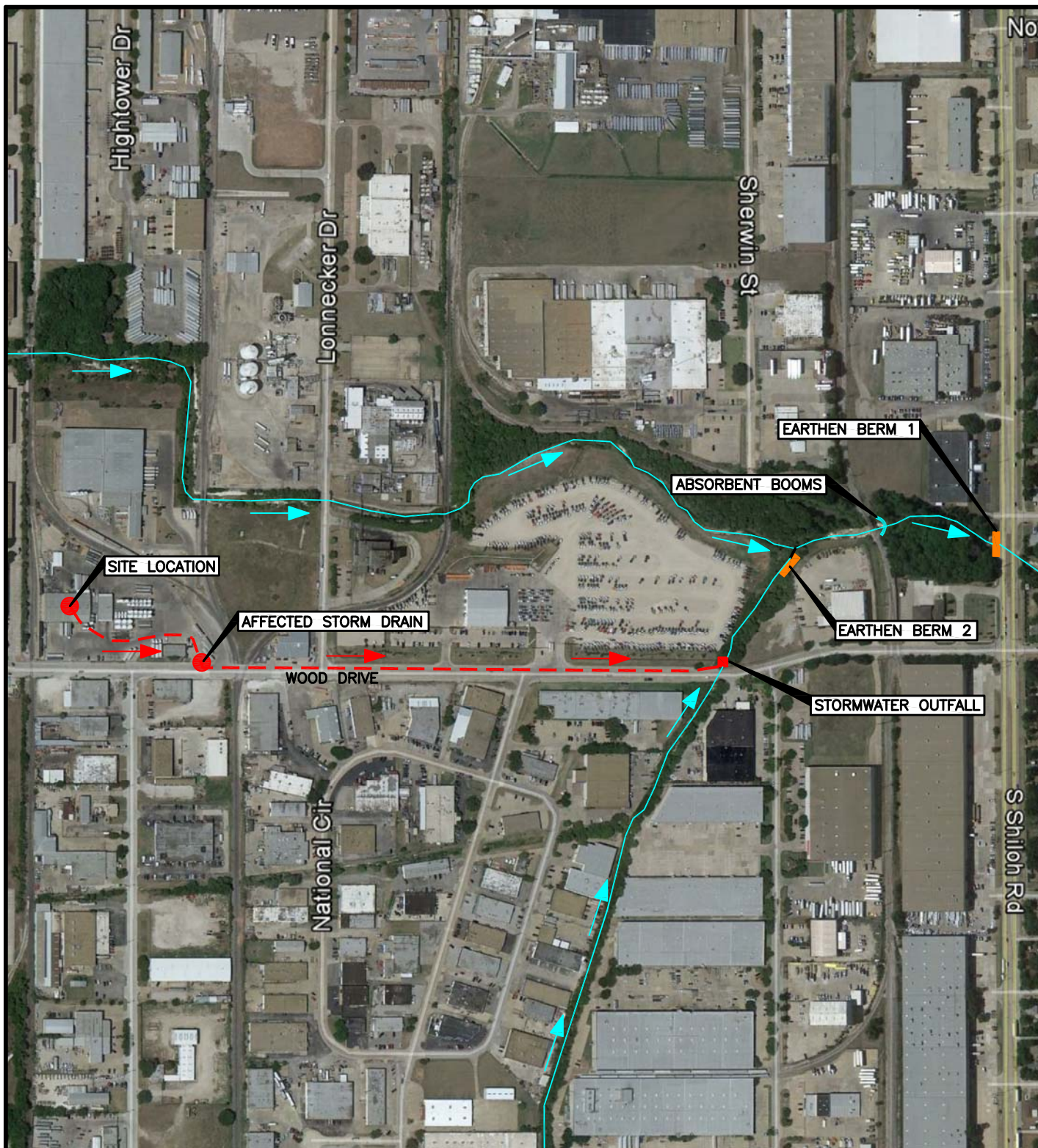
DATE:
NOV 2012

W.O. #
20406.012.001.0786.01

SCALE:
AS SHOWN

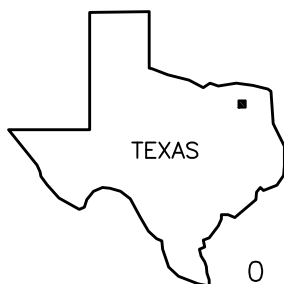
ATTACHMENT C

Site Layout Map



LEGEND:

- FLOW DIRECTION
- - - FIRE WATER FLOW DIRECTION



0 250 500
SCALE IN FEET

SOURCE: GOOGLE EARTH PRO AERIAL 2012.
NRC No.: 1030866
TDD No.: TO-0001-12-11-05



US EPA REGION 6

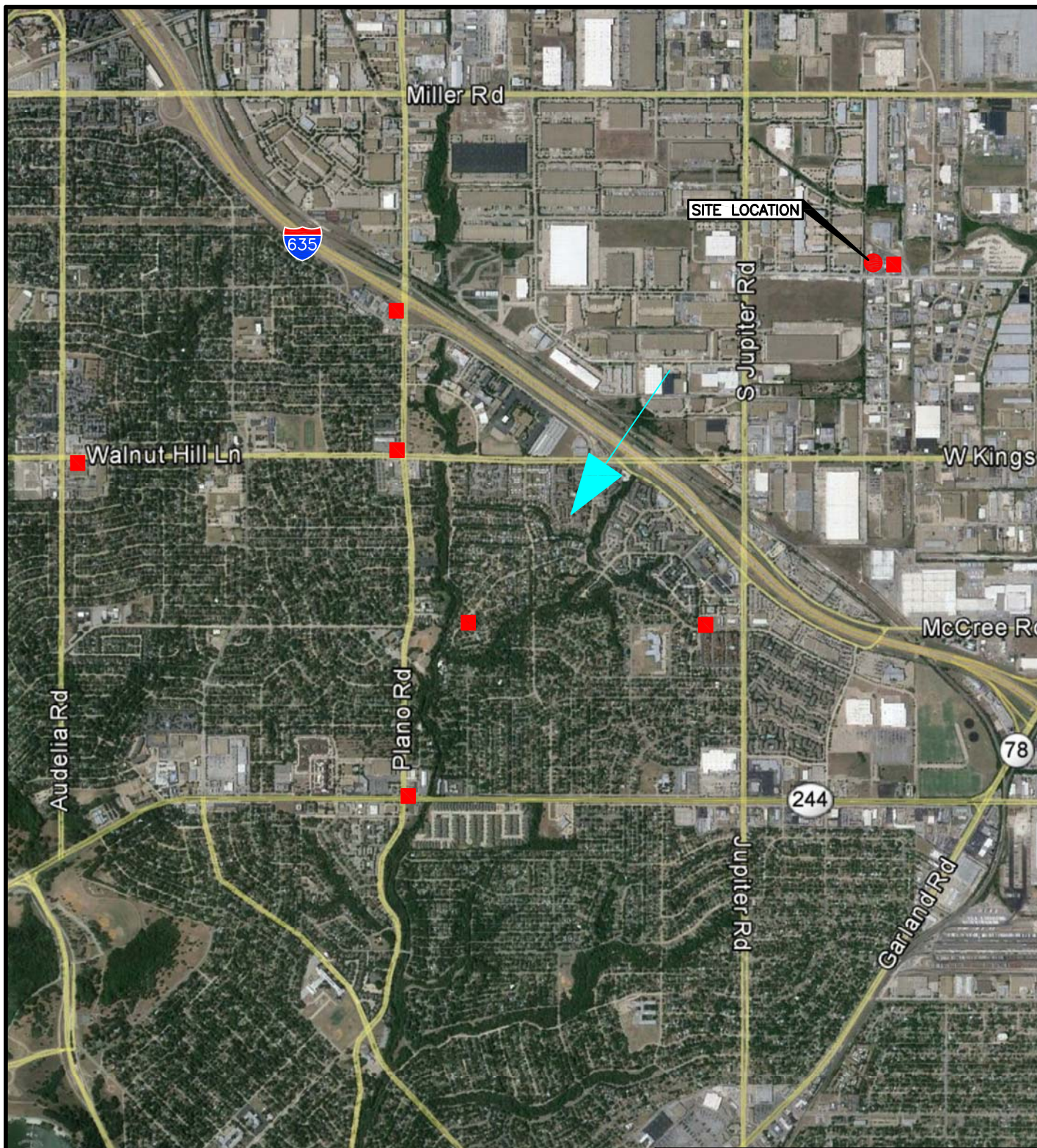
**ATTACHMENT C
SITE LAYOUT MAP**

NEXEO SOLUTIONS
3101 WOOD DRIVE
GARLAND, DALLAS COUNTY, TEXAS

DATE: NOV 2012	W.O. # 20406.012.001.0786.01	SCALE: AS SHOWN
-------------------	---------------------------------	--------------------

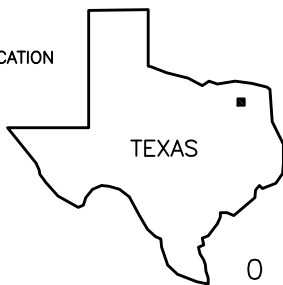
ATTACHMENT D

Air Monitoring Location Map



LEGEND:

- AIR MONITORING LOCATION
- ➔ WIND DIRECTION



0 1100 2200
SCALE IN FEET

SOURCE: GOOGLE EARTH PRO AERIAL 2012.
NRC No.: 1030866
TDD No.: TO-0001-12-11-05



US EPA REGION 6

ATTACHMENT D
AIR MONITORING
LOCATION MAP
NEXEO SOLUTIONS
3101 WOOD DRIVE
GARLAND, DALLAS COUNTY, TEXAS

DATE: NOV 2012	W.O. # 20406.012.001.0786.01	SCALE: AS SHOWN
-------------------	---------------------------------	--------------------

Attachment E

Digital Photographs

Attachment E will be provided with the Final Support CD.

ATTACHMENT F

NRC No. 1030866

NATIONAL RESPONSE CENTER 1-800-424-8802

*** For Public Use ***

Information released to a third party shall comply with any
applicable federal and/or state Freedom of Information and Privacy Laws

Incident Report # 1030866

INCIDENT DESCRIPTION

*Report taken at 18:00 on 16-NOV-12

Incident Type: FIXED

Incident Cause: UNKNOWN

Affected Area:

The incident was discovered on 16-NOV-12 at 16:00 local time.

Affected Medium: WATER STORM DRAINS

SUSPECTED RESPONSIBLE PARTY

Organization: NEXEO SOLUTIONS
TX

Type of Organization: PRIVATE ENTERPRISE

INCIDENT LOCATION

3101 WOOD DRIVE County: DALLAS

City: GARLAND State: TX

RELEASED MATERIAL(S)

CHRIS Code: UNK Official Material Name: UNKNOWN MATERIAL

Also Known As:

Qty Released: 0 UNKNOWN AMOUNT

Qty in Water: 0 UNKNOWN AMOUNT

DESCRIPTION OF INCIDENT

CALLER STATED THAT THEY WERE OFFLOADING A TRUCK OF ETHANOL AND FOR AN UNKNOWN
REASON A FIRE WAS STARTED. CALLER ALSO STATED DUE TO THE SIZE OF THE FIRE AND THE
AMOUNT OF WATER BEING USED BY THE FIRE DEPARTMENT THAT IT IS LIKELY STORM DRAINS
WILL BE AFFECTED.

INCIDENT DETAILS

Package: N/A

Building ID:

Type of Fixed Object: CHEMICAL FACILITY

Power Generating Facility: UNKNOWN

Generating Capacity:

Type of Fuel:

NPDES:

NPDES Compliance: UNKNOWN

DAMAGES

Fire Involved: YES Fire Extinguished: UNKNOWN

INJURIES: UNKN Hospitalized: Empl/Crew: Passenger:

FATALITIES: NO Empl/Crew: Passenger: Occupant:

EVACUATIONS: YES Who Evacuated: EMPLOYEES Radius/Area:

Damages: NO

Closure Type	Description of Closure	Length of Closure	Direction of Closure
Air:	N		

Road: N

Major
Artery: N

Waterway: N

Track: N

Passengers Transferred: NO

Environmental Impact: UNKNOWN

Media Interest: NONE Community Impact due to Material:

REMEDIAL ACTIONS

FIRE DEPARTMENT IS ONSCENE

Release Secured: UNKNOWN

Release Rate:

Estimated Release Duration:

WEATHER

Weather: UNKNOWN, °F

ADDITIONAL AGENCIES NOTIFIED

Federal:

State/Local: LOCAL FIRE, TEQ

State/Local On Scene:

State Agency Number:

NOTIFICATIONS BY NRC

CALCASIEU PARISH SHERIFF'S DEPT (CRIMINAL INTELLIGENCE UNIT)

16-NOV-12 18:07

DHS TEXAS FUSION CENTER (INTELLIGENCE OFFICERS)

16-NOV-12 18:07

DOT CRISIS MANAGEMENT CENTER (MAIN OFFICE)

16-NOV-12 18:07

U.S. EPA VI (MAIN OFFICE)

16-NOV-12 18:46

USCG NATIONAL COMMAND CENTER (MAIN OFFICE)

16-NOV-12 18:09

JFO-LA (COMMAND CENTER)

16-NOV-12 18:07

NATIONAL INFRASTRUCTURE COORD CTR (MAIN OFFICE)

16-NOV-12 18:07

NOAA RPTS FOR TX (MAIN OFFICE)

16-NOV-12 18:07

NATIONAL RESPONSE CENTER HQ (MAIN OFFICE)

16-NOV-12 18:09

NATIONAL RESPONSE CENTER HQ (AUTOMATIC REPORTS)

16-NOV-12 18:07

NTSB PIPELINE (MAIN OFFICE)

16-NOV-12 18:07

TCEQ (MAIN OFFICE)

16-NOV-12 18:07

TCEQ (REGION 4)

16-NOV-12 18:07

TX DEPT OF STATE HEALTH SERVICES (COMMAND CENTER)

16-NOV-12 18:07

TEXAS STATE OPERATIONS CENTER (COMMAND CENTER)

16-NOV-12 18:07

ADDITIONAL INFORMATION

*** END INCIDENT REPORT # 1030866 ***

ATTACHMENT G

POLREP

U.S. ENVIRONMENTAL PROTECTION AGENCY
 POLLUTION/SITUATION REPORT
 Nexeo Solutions - Removal Polrep
 Initial and Final Removal Polrep



UNITED STATES ENVIRONMENTAL PROTECTION AGENCY
 Region VI

Subject: POLREP #1
 Initial and Final
 Nexeo Solutions

Garland, TX
 Latitude: 32.8871800 Longitude: -96.6757860

To: Kelly Crunk, TCEQ
 Lawrence Stanton, EPA HQ
 Ragan Broyles, Superfund Division

From: Mike McAteer, OSC

Date: 11/18/2012

Reporting Period: 11/16/2012 through 11/18/2012

1. Introduction

1.1 Background

Site Number:	Contract Number:	
D.O. Number:	Action Memo Date:	
Response Authority: CERCLA	Response Type:	Emergency
Response Lead: PRP	Incident Category:	
NPL Status: Non NPL	Operable Unit:	
Mobilization Date: 11/16/2012	Start Date:	11/16/2012
Demob Date:	Completion Date:	
CERCLIS ID:	RCRIS ID:	
ERNS No.:	State Notification:	
FPN#:	Reimbursable Account #:	

1.1.1 Incident Category

Facility fire involving Methanol, Toluene, Lacolene, and several other unknown flammable hydrocarbons.

1.1.2 Site Description

Nexeo Solutions is located at 3101 Wood Drive, Garland, Dallas County, Texas. Nexeo Solutions is a chemical blending facility used for down-well oil and gas exploration, chemical distribution, and RCRA certified waste storage facility. Nexeo Solutions is located in a light industrial area of the City of Garland.

1.1.2.1 Location

3101 Wood Drive, Garland, Texas

32.887114W, -96.60261N

1.1.2.2 Description of Threat

At approximately 3:30 pm on November 16, 2012, a fire broke out at Nexeo Solutions' distribution/loading building creating a smoke plume that drifted off-site over residential neighborhoods primarily to the west of the facility. An evacuation order of 1/4 mile in all directions from the facility was issued by the Garland Fire Department. Fire suppressant water runoff moved north and eastward into an adjacent storm drain which flowed into an unnamed creek.

1.1.3 Preliminary Removal Assessment/Removal Site Inspection Results

2. Current Activities

2.1 Operations Section

2.1.1 Narrative

2.1.2 Response Actions to Date

On 16 November 2012, EPA OSC Mike McAteer and START-3 mobilized to the site and began response activities. Upon arrival, EPA and START-3 collected facts regarding the incident, took photo documentation, and performed air monitoring in surrounding residential neighborhoods and at the incident location. Air monitoring included PH₃, NO₂, LEL, O₂, Cl₂, SO₂, NH₃, HCN, VOC, CO, and H₂S; no detections were observed. Response activities by the City of Garland included creating an earthen dam down stream in the affected unnamed creek at Shiloh Road bridge. Response activities by RP contractors included placing soft boom and sorbent in an affected storm drain, removing water at the earthen dam created by the City of Garland, and storing water in frac tanks staged in the median of Shiloh Road. Samples were taken of the water and will be sent to a laboratory for waste characterization. TCEQ representatives were also on-site to document cleanup activities.

17 November 2012, EPA OSC Mike McAteer and START-3 continued to monitor and document cleanup activities. RP contractors continued to remove water from behind the earthen dam and store it in on-site frac tanks. Nexeo's environmental manager was on-site to expedite cleanup process. Garland Fire Department crews remained at the location of the fire all day due to continued smoldering and periodic small flare ups. EPA left the site at approximately 1600 hours and TCEQ took the lead on working with Nexeo to determine continued surface water sampling parameters and shut down protocol.

2.1.3 Enforcement Activities, Identity of Potentially Responsible Parties (PRPs)

2.1.4 Progress Metrics

<i>Waste Stream</i>	<i>Medium</i>	<i>Quantity</i>	<i>Manifest #</i>	<i>Treatment</i>	<i>Disposal</i>

2.2 Planning Section

2.2.1 Anticipated Activities

RP contractors will continue to remove water in the unnamed creek at the earthen dam created at the bridge at Shiloh Road, and store in frac tanks on-site until the waste is profiled for disposal. TCEQ will work with Nexeo to determine water sampling analytical parameters and shutdown protocol.

2.2.1.1 Planned Response Activities

2.2.1.2 Next Steps

2.2.2 Issues

2.3 Logistics Section

No information available at this time.

2.4 Finance Section

No information available at this time.

2.5 Other Command Staff

No information available at this time.

3. Participating Entities

3.1 Unified Command

3.2 Cooperating Agencies

USEPA

TCEQ

City of Garland

Health Department

Fire Department

Police Department

Public Works

Nexeo Solutions

Protect Environmental

Adler

Agricultural Solutions, Inc. (ASI)

4. Personnel On Site

No information available at this time.

5. Definition of Terms

No information available at this time.

6. Additional sources of information

No information available at this time.

7. Situational Reference Materials

No information available at this time.

ATTACHMENT H
START-3 Site Logbook



"Rite in the Rain"
ALL-WEATHER
JOURNAL
No. 391

Nexeo Solutions

TSD No. TD-0001-12-11-05

W.O. # 20406.012.001.0786.01

NRC # 10308666

2/16/12
TR

TD-0001-12-11-05

11005 START-3 Alex Byrum receives a phone call from EPA OSC Mike McAteer who activated START-3 to respond to a facility fire located at 3101 Wood Drive, Garland, Dallas County, Texas 75041. OSC McAteer requested site documentation, investigation, and air monitoring assistance.

11013 START-3 A. Byrum contacted START-3 T. Richards, activated, and requested T. Richards to pick up equipment at EPA Warehouse in Addison, TX.

11035 T. Richards arrived at EPA Warehouse.

1700 START-3 A. Byrum enroute.

1703 START-3 T. Richards departs EPA Warehouse for site.

1745 T. Richard arrives onscene.

Health and Safety Meeting

Objective: Respond to a facility fire located in Garland, TX. Fire involves Methanol, toluene, and unknown oils. START-3 is to provide technical assistance, provide written and photographic documentation, and air monitoring in local neighborhoods and site location.

Current Weather: Partly cloudy, Cold, 59°F, low temperature 40°F, Winds NE 10-15 mph.

Physical Hazards: Traffic, driving, slips, trips, falls, hypothermia, dehydration, smoke inhalation.

Biological Hazards: Animals, blood borne pathogens, insects.

Chemical Hazards: Unknown chemicals involved in fire.

2/16/12
TR

TD-0001-12-11-05 3

hydrocarbons burning, fire suppression water.

Radiation Hazards: Non-ionization radiation.

Hospital Information: Baylor Medical Center at Garland. 2300 Marie Curie Drive, Garland, Dallas County, Texas 75042. (972) 484-5000. baylorhealth.com. Head east on Wood Drive to Shiloh Road. North on Shiloh Road, to Walnut Street. East on Walnut Street to Clara Barton Blvd, North on Clara Barton Blvd to Marie Curie Drive.

Signatures

Alex Byrum

Tobias Richards

1759 START-3 begins air monitoring at Jupiter Rd and McCreedy Rd (Intersection of). ^{TR} No levels ^{TR} Air monitoring parameters include PH_3 , NO_2 , LEL, O_2 , Cl_2 , SO_2 , NH_3 , HCN, VOC^s , CO, and H_2S . No levels were detected. Paintsmell ^{TR} of fire in air.

1802 Location two (McCreedy and Bryson), no levels detected.

1807 Location three (Plano Rd and Walnut Hill), ^{TR} sun has set, ^{TR} no levels detected.

1811 Location four (Plano Rd and Walnut Hill), no detections.

1813 Location five (Hwy 635 and Plano Rd), faint smell of fire, no detections.

1818 Location six (Walnut Hill and Audelia), 0.1 ppm VOC, smell of fire.

1830 OSC McAteer contacts A. Byrum and requested to halt monitoring in neighborhoods and to monitor closer.

4 11/10/12
TR

TD-0001-12-11-05

to incident location.
1849 Met with OSC McAteer and TCEQ, stated will have escorts to incident location to air monitor for firefighters.
1851 Garland Fire Department (GFD) stated have not heard any irritation from smoke.
1900 Viewed incident location, no detections with MultiRae, fire still burning. Firefighters stated runoff traveled east as a sheet flow where it entered a storm water drain ~~and~~^{TR} along Wood Drive and a ditch along a railroad track. Fire alarms going off in buildings.
1909 Railroad track observed on-site, closed spur.
1914 Viewed incident location, still smoldering, 0.5 VOC observed on MultiRae. Firefighters stated only foam will be used on fire from here on out, two-three 18 wheeler trucks involved in fire, off-baking area, multiple 55 gallon drums w/ engine oil involved. City of Garland Streets Department building an earthen dam downstream to contain firewater runoff. Nexeo representative stated firewater was sheet flow into neighboring street and into ditch.
1930 Rail line re-opened up the line.
1934 Observed oil water mixture entering storm drain along Wood Dr.
1940 Firefighters containing water on-site, more trucks coming in to build earthen dam. Representative of City of Garland stated still building earthen dam, absorbent booms in creek. Protect Environmental is Nexeo's cleanup contractor.
TLW

11/10/12
TR

TD-0001-12-11-05

5

1948 OSC McAteer spoke with Scott from Protect Environmental and stated storm drain on Wood Drive needs to be dammed off, frac tanks and vac trucks en route and will be there in approximately one hour, will set up on south bound side of Shiloh Road which is closed, and plans to take waste water to ASI for disposal. 4 frac trucks and 3 frac tanks will be used at dike, however more objectives are coming into play with firewater being containing on-site. Protect Environmental asked for five feet above water line for earthen berm, little flow in creek.
2003 Viewed earthen berm ~~at~~^{TR} on creek at Shiloh Rd.
2025 Earthen berm completed, holding, foot of free board between water line and top of berm, approximately 500,000 to one million gallons put on fire.
2027 OSC McAteer talked to City of Garland representative Susan Chessher, director of Health Dept. for Garland (4169). 441e.
9447 about building second dam downstream. Mr. Chessher stated feels good about dam, and has 4 dump trucks with sand on stand-by, but Patricia next possible location.
2035 Viewed earthen dam, risen a few inches in approx. 1/2 hour.
2043 START-3 T. Richards viewed storm drain along Wood Dr, RP contractors placed boom inside storm drain and sorbent along pathway leading into storm drain.
2100 Scott from Protect Environmental stated they
TLW

6 11/16/12
TR

TD-0001-12-11-05

are a subcontractor to Nexeo, Custom Environmental has contract with Nexeo, POC for Custom Environmental is Marty Green (303). 304. 2710 and Steven Kemp is POC for Nexeo Solutions (817). 751.9064.

2107 Bobby from Protect Environmental stated will vacuum out below dam first then begin vacuuming upstream of earthen berm.

2119 OSC McAteer, START-3 Richards, and reps from City of Garland viewed soft booms in unnamed creek, GPS 32.88802N, -96.66698W. No visible product and no smell.

2125 Walked further upstream, little smell, no visible product.

2133 Observed earthen dam GPS 32.88781N, -96.66571W, Vac truck on-scene.

2153 Protect begins vacuuming creek, stated Methanol being off-loaded in building involved in fire, possible toluene, xylene, and oil involved.

2158 TCEQ sampling for VOC's and hydrocarbons.

2200 City of Garland departs site.

2224 City of Garland Fire Department will be on-scene all night to monitor fire in case of flare-ups.

2230 OSC McAteer stated Nexeo representative Steven Kemp stated ensure exactly what happened, train car unloading methanol to a tank, no blending going on, no chemical reaction, somehow something ignited.

2239 Protect stated 24 hour operations, two frac tanks will be coming in tonight.

TR

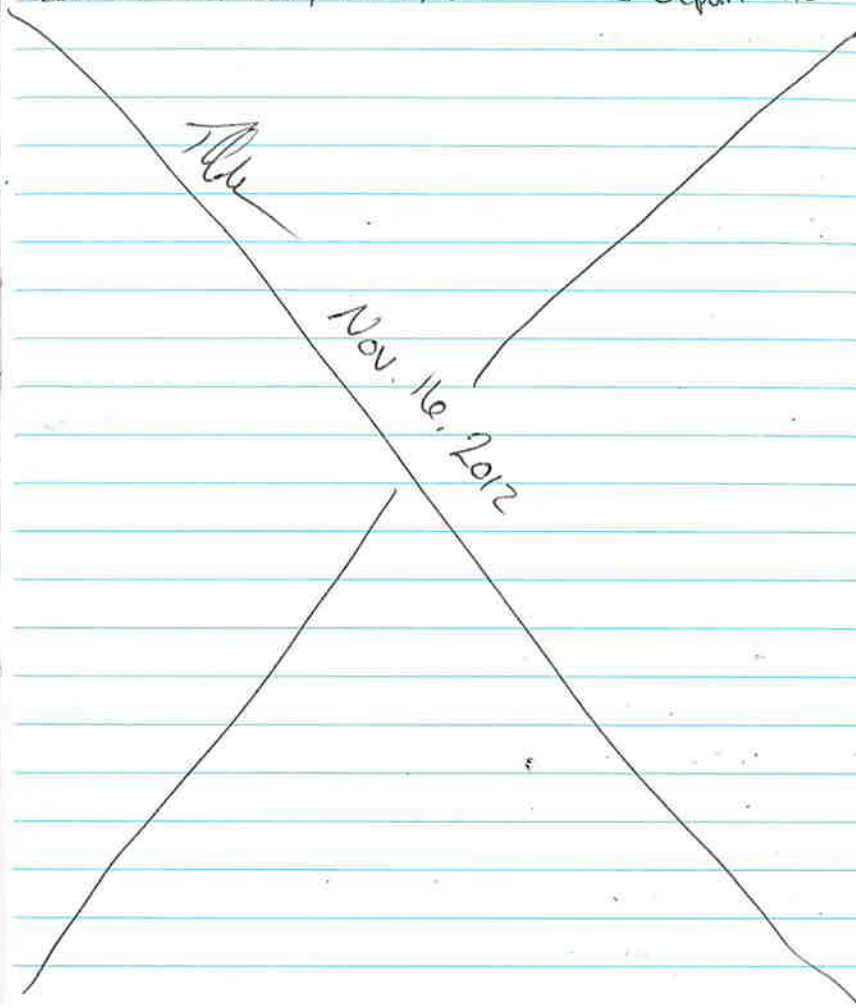
11/16/12
TR

TD-0001-12-11-05 7

2245 Steve from Protect stated one additional vac truck in tonight at approximately midnight.

2345 Viewed earthen dam location, two frac tanks and two vac trucks on-scene.

2350 OSC McAteer, TCEQ, and START-3 depart site.



11/17/12
TR

TD-0001-12-11-05

0030 START-3 finishes activities for night.

0730 START-3 Richards departs for site in Garland, TX.

Health and Safety Meeting

Cold stress, traffic, possible still smoke, slips, trips, falls, housekeeping.

0815 Arrived at site location.

0820 No vac trucks on-scene, 6: 8,500 gallon frac tanks on-scene.

0824 Water level dropped approximately an inch from last night, no smell, no visible product.

0830 Protect stated 63,500 gallons have been removed, 12,500 gallons taken to Agricultural Services, Inc for storage until waste profile can be done, vac trucks left site 3-4 hours ago due to no more storage room. They plan to resume vacuuming at 1000.

0842 Viewed earthen dam from creek bank, approx. 2 ft of free board.

0901 Spoke with Scott and Richard Cameron of Protect, stated wants to open Shiloh Rd south bound, so is asking RP to stage frac tanks on RP property.

0903 Viewed storm drain on Wood Dr, sorbent and boom in place, no running water going into drain, visible staining around area.

0906 Observed Mr. Kemp with Nexeo with other reps on-site, media on-scene.

0910 Viewed spill pathway, no odor, light staining, light rainbow stain

11/17/12
TR

TD-0001-12-11-05 9

Sheen present on pools.

0920 TCEQ Michelle Havelka on-scene.

0920 Viewed incident location, second containment in adjacent tanks full of fire suppression water, pH of firewater 9.5 on ground, small flame still visible.

0930 Spoke with Fire Department battalion chief, stated report will be available on Monday 19 November 2012. Mr. Dan Heintz, environmental manager for Nexeo Solutions, contacted TCEQ M. Havelka and stated is en route to incident from Houston, TX, stated still working on determining cause of incident, has no quantities that were involved in fire.

1007 USC McAteer on-scene: TCEQ spoke with Richard of Protect, Richard stated 20,000 gallon frac tanks en route, and Protect walked creek this morning, small pools of milky white substance observed, and analytical for volatiles and TPH have been submitted.

1038 Firefighters stated approx. One million gallons used on fire.

1045 EPA, TCEQ, and START-3 observed earthen dam.

1200 Pump truck arrives on-scene.

1230 Frac tanks arrive on-scene.

1300 EPA, TCEQ, and START-3 break for lunch.

1400 Back on-site, Garland Health Dept. Ashtun Tassin (469).

471. 5245 stated trying to get access to roofing company

10 11/17/12
TR

TD-0001-12-11-05

1407 Viewed earthen dam, Protect stated 13,000 gallons removed so far today, with more frac tanks moving in.

1418 Chemicals involved in fire include Toluene, Xylene, and Methanol, and an assortment of engine oils.

1437 Frac tanks arrive.

1442 ERA, TCEQ, and START-3 view incident location, still smoldering.

1535 Nexeo Dan Heintz arrives (832). 948. 8395 Sheintz@nexasolutions.com. Meeting between Mr. Heintz, Richard Cameron of Protect, TCEQ M. Havelka, OSC McAteer, START-3. Richard stated 4 frac tanks staged on-site (four 20,000 gallon frac tanks), and RP contractors are recovering 11,000 gallons an hour. Water has dropped 3 ft below top of earthen dam, minnows swimming, no sheen, although one cloudy pocket noted but has dissipated. Will continue to collect water until analytical is back and proves no contamination, ASE stated will take water if non-hazardous. Mr. Heintz stated wants to characterize water before disposal.

Building involved in fire has containment underneath truck stop, but there is no drain from facility to storm drain. Containment reaches 3-4 ft deep. Does not know how fire started, but a full investigation will be launched. Facility is a RCRA certified facility to store waste. Process of what was happening when fire broke out was product being pulled off train car (Methanol), stored in a bulk tank, and then loaded into trucks. Facility does not manufacture products, just

tlw

11/17/12
TR

TD-0001-12-11-05 11

blends and pure product. Mr. Heintz stated is contact for Nexeo Solutions, NRC was notified, and OSC McAteer stated

Nexeo needs analytical before stopping water collection.

1600 OSC McAteer and START-3 depart site.

1630 START-3 Arrived at office.

tlw

November 17, 2012

12/19/12
TR

TD-0001-12-11-05

1430 START-3 departs Western Office for site.

1520 START-3 arrives, Protect on-scene, frac tanks still in place on Shiloh Rd, no vacuum trucks observed at Shiloh Rd.

1523 Met with TCEQ representatives, stated RP contractors not vacuuming bridge since 1500 hours, not sure reason why. Stated oil pooled in drainage canal next to roofing company, one Vietruck on-scene, stated oil extends approx. 50 yards from outfall downstream.

1525 Viewed ~~dam~~ TR dam location at Shiloh Rd.

1525 Viewed oiled location, vegetation and creek bottom stained, RP contractors vacuuming.

1530 TCEQ stated RP contractors began vacuuming oiled location at approx. 1425 hours, stated approx 2800 gallons removed (oil and water mix). pH 10 observed below dam location, DO 10.4.

pH 5 upstream, DO 8.3. RP contractors will build earthen berm at confluence of drainage canal and unnamed creek, and will push ~~the~~ stormwater drain with freshwater.

1630 TCEQ M. Havelka on-scene, sampling back, Toluene is at 37 micrograms per mL, background is no detection. If sample is still low, will allow RP to break dam at Shiloh Rd. Possible small fish kill, pH 10 due to ground up concrete in dam, 3 ^{TR} minnows and 2 sunfish.

1649 Viewed earthen dam at confluence of drainage canal and unnamed creek, halfway constructed.

1655 D. Heintz stated approx. 400,000 gallons removed so far.
TR

11/19/12
TR

TD-0001-12-11-05 13

1705 Scott from Protect stated 22 frac tanks on-site, 20.5 full along with 6 8000 gal frac tanks, approx. 461,000 gallons removed.

1709 Verbal lab results back, non-detection for Toluene.

1717 Soft boom placed at confluence of drainage canal and unnamed creek, D. Heintz and TCEQ stated one more sample and run full sweep for confirmation.

1800 START-3 departs site.

1830 START-3 arrives at office.

Late entry Health and Safety meeting.

Hypothermia, traffic, slips, trips, falls, housekeeping.

TR

November 19, 2012

14 11/29/12
TR

TD-0001-12-11-05

Photo Log

Location: Garland, Dallas County, Texas

Project: Nexco Solutions

ID	Date	Time	Direction	P/w	Description
001	11/16/12	1923	N	TR/AB	Facility warehouse next to incident
002	11/16/12	1925	NW	TR/AB	Rail line tank cars on-site.
003	11/16/12	1926	N	TR/AB	Incident location still smoldering.
004	11/16/12	1927	N	TR/AB	Fire water runoff.
005	11/16/12	1928	SW	TR/AB	Flare up at the incident location.
006	11/16/12	1948	W	TR/AB	Fire water runoff present in a ditch
007	11/16/12	1949	W	TR/AB	Fire water runoff entering storm
008	11/16/12	1951	W	TR/AB	Responsible party.
009	11/16/12	2008	N	TR/AB	City of Garland creating an earthen
010	11/16/12	2049	W	TR/AB	City of Garland creating an earthen
011	11/16/12	2058	N	TR/AB	Absorbent boom placed inside storm
012	11/16/12	2138	N	TR/AB	Absorbent boom placed in unnamed
013	11/16/12	2345	N	TR/AB	RP contractors vacuuming out water
014	11/16/12	2340	S	TR/AB	RP contractors transferring contaminated
015	11/17/12	0858	N	TR/AB	Incident location.
016	11/17/12	0929	NW	TR/AB	Tanks adjacent to incident location.
017	11/19/12	1537	S	TR/AB	Vacuum truck removing oil from
018	11/19/12	1544	N	TR/AB	Oil contamination in drainage ditch.
019	11/19/12	1550	S	TR/AB	Extent of oil contamination in
020	11/19/12	1652	E	TR/AB	RP contractors creating a second earthen
021	11/19/12	1717	N	TR/AB	RP contractors placing sorbent boom at

TWW

11/29/12
TR

TD-0001-12-11-05

15

Photo Log

Camera: Olympus Digital Camera model U1000/SR0000

TR=Travis Richards AB=Alex Byrum P/w: Photographer/Witness

Description

Location.

adjacent to the incident location.
drain along Wood Drive.berm in unnamed creek at Shiloh Road.
dam in unnamed creek at Shiloh Road.Water dam along Wood Drive.
creek.contained at earthen dam.
water to fire tanks.

drainage ditch.

drainage ditch.
dam at the confluence of the drainage ditch and unnamed creek.
confluence of drainage ditch and unnamed creek.

TWW



PROTECT
ENVIRONMENTAL
SERVICES, INC.

Scott Cameron
Operations Manager

972-554-1700

2010 Century Center Blvd
Suite 1

Irving, Texas 75062

Facsimile 972-554-1717

www.protectusa.net
sre@protectusa.net

OLUWATOBI "TOBI" ADEYINKA

Environmental Investigator
Waste Program

Region 04 ■ Fort Worth



Texas Commission on Environmental Quality
2309 Gravel Dr., Fort Worth, TX 76118
Direct 817/588-5807 ■ Office 817/588-5800
Fax 817/588-5703
oadeyink@tceq.state.tx.us

printed on recycled paper

"Rite in the Rain"
ALL-WEATHER WRITING PAPER



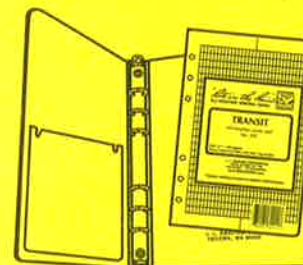
"Outdoor writing products...
...for outdoor writing people."



Copier & Ink-Jet Paper



Bound Books



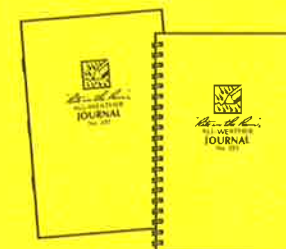
Loose Leaf / Ring Binders



Memo Books



All-Weather Pens



Notebooks

www.RiteintheRain.com

**"Outdoor writing products...
...for outdoor writing people."**



RECYCLABLE

"Rite in the Rain" - A unique All-Weather Writing paper created to shed water and enhance the written image. It is widely used throughout the world for recording critical field data in all kinds of weather.

Available in a variety of standard and custom printed case-bound field books, loose leaf, spiral and stapled notebooks, multi-copy sets and copier paper.

For best results, use a pencil or an all-weather pen.

a product of

J. L. DARLING CORPORATION
Tacoma, WA 98424-1017 USA
www.RiteIntheRain.com

Item No. 391
ISBN: 978-1-932149-22-7

©
Made in the USA
US PAT NO: 6,863,940



6 32281 39112 8

ATTACHMENT I

TDD No. TO-0001-12-11-05

Response Activities- REMOVAL
Funds (0001)
Weston Solutions, Inc.

! = required field ☐ Moved To EAS

Note: Remaining Amount
includes \$0.00 in Reserve.

TDD Name: Nexeo Solutions	! Period: Base Period
! Purpose: Work Assignment Initiation	Verbal Date: 11/16/2012
! Priority: High	! Start Date: 11/16/2012
Overtime: Yes	! Completion Date: 01/31/2013
! Funding Category: Removal	Invoice Unit:
! Project/Site Name: Nexeo Solutions	WorkArea: RESPONSE ACTIVITIES
Project Address: 3101 Wood Dr	Activity: Emergency Response
County: Dallas	Work Area Code:
City, State: Garland, Texas	Activity Code: RV
Zip: 75041	EMERGENCY CODE: <input type="checkbox"/> KAT <input type="checkbox"/> RIT
! SSID: A6GE	FPN:
CERCLIS:	Performance Based: No
Operable Unit:	

Authorized TDD Ceiling:	Cost/Fee	LOE (Hours)
Previous Action(s):	\$0.00	0.0
This Action:	\$7,000.00	0.0
New Total:	\$7,000.00	0.0

Specific Elements

Description of Work:

All activities performed in support of this TDD shall be in accordance with the contract and TO PWS.

This is a Tier 2 Emergency Response. START shall provide technical assistance to the EPA OSC in responding to the release of hazmat from a fire at the Nexeo Solutions facility in Garland, TX. The suspected hazardous material is thought to be Methanol and Toluene. Assistance may include but, not limited to, monitoring of air in areas downwind of the fire and in the area near the fire. monitoring of the extent of contamination in air and water (fire suppression water overflow), documentation of all response activities conducted by the responsible party, collection of water, sediment and soil samples as necessary, and other investigation and oversight activities as directed by the OSC. START shall provide the OSC with a draft and final Response Report after all onsite activities are completed and as directed by the OSC.

Accounting and Appropriation Information

SFO: 22

Line	DCN	IFMS	Budget / FY	Approp. Code	Budget Org Code	Program Element	Object Class	Site Project	Cost Org Code	Amount
1	RSC037	XXX	1112	TD	6A00S	303DC6	2505	A6GERV00	C001	\$7,000.00

Funding Summary:	Funding
Previous:	\$0.00
This Action:	\$7,000.00
Total:	\$7,000.00

Funding Category
Removal

Section

- Signed by Mike McAteer/R6/USEPA/US on 11/18/2012 07:07:27 PM, according to Cheng Wei Feng/s

: Mike McAteer

Date: 11/18/2012

Phone #:

Project Officer Section - Signed by Cora Stanley/R6/USEPA/US on 11/19/2012 01:44:48 PM, according to Cheng

Project Officer: Linda Carter

Date: 11/19/2012

Contracting Officer Section - Signed by Cora Stanley/R6/USEPA/US on 11/19/2012 01:44:48 PM, according to C

Contracting Officer: Cora Stanley

Date: 11/19/2012

Contractor Section

Contractor Contact:

Date: