

Crowson Ave Mercury Spill Site.

04 January 2013

- 0900 - STARTs Hikel and Korman onsite at [redacted] Crowson Ave, Baltimore MD. START Hikel calls OSC Greg Mann to notify START is on site and awaiting his arrival, will calibrate/warm Lunex Mercury Analyzer.
- 0909 - Hikel boots/powers Lunex for 20 minute warmup. Lunex - Ashland Technology Retail Serial# R9281.
- 0910 - Hikel prepares yard fenced area for heater to warm ground. Fenced area water heater was placed, potential spill area.
- 0920 - OSC - Greg Mann onsite. History Sept. '12 plumber replaced expansion tank, removed from second floor, taken out of house. Home owner noticed trail/odor of mercury. EPA has document can provide on honey comb / expansion tank system and relation and function with Hg.
- 0928 - Home owner, [redacted], on site, unlocks residence.
- 0933 - Enter home, through front door. Home own states the temp of house is set at 53°F. Upstairs temp set at 57°F

Readings: Entry of house 0.0 $\mu\text{g}/\text{m}^3$
 Foot of Stairs 1.2 $\mu\text{g}/\text{m}^3$, 2.2 $\mu\text{g}/\text{m}^3$
 First landing Avg. 0.3 $\mu\text{g}/\text{m}^3$
 4th stair (first above landing) 0.8 $\mu\text{g}/\text{m}^3$ highest
 8th Stair 0.2 $\mu\text{g}/\text{m}^3$
 Top of stair 0.5 $\mu\text{g}/\text{m}^3$
 Upstairs hallway. 5.8 $\mu\text{g}/\text{m}^3$ (Max) - Avg. 3.8 $\mu\text{g}/\text{m}^3$
 Upstairs breathing zone 0.9 $\mu\text{g}/\text{m}^3$

- 0947 - Home own points area observed micro beads on stair way. When plumber removed expansion tank did not wrap/cover tank.
 Keyhole for closet door 1.5 $\mu\text{g}/\text{m}^3$
 Breathing zone, (entry air) 3.5 $\mu\text{g}/\text{m}^3$
 Shelving below source area 3.3 $\mu\text{g}/\text{m}^3$
 On floor below source, beads on floor
- 0952 - Lunex reading spiked to 17 $\mu\text{g}/\text{m}^3$, stepped out of source area to upgrade PPE.
- 0956 - Mike [redacted] Baltimore, MD Department of Environment.
- 0957 - In basement, basement flooded recently, water was collected as

Crown Ave Mercury Spill Site

04 January 2013

- 0958- Lead pipe, inside elbow 55 ng/m^3 , visible beads in source pipe
 * AEG pumped and collected water for disposal. Hg Contact water
 Table below source 2.7 ng/m^3 (pipe), inside pipe 7100 ng/m^3
 Sock on ground, homeowner noted had visible beads, previous, 39 ng/m^3
 under tile 1.9 , solid concrete.
 Breathing Zone in Basement 2.3 ng/m^3
 Front of dryer and furnace floor 12.5 ng/m^3 , 14.7 ng/m^3
- 1008- Bottom of basement stairs $2.6 \text{ avg}/2.9 \text{ max}$
 Bottom right of landing, localized 3.2 ng/m^3
 Bottom left of landing 7.0 ng/m^3
 Sump/pit 1.4 ng/m^3
 Old sump pump avg. 2.2 ng/m^3
 Breathing Zone 2.0 ng/m^3 Front right Basement
 Breathing Zone 1.4 ng/m^3 Front left basement.
 Breathing Zone 1.2 ng/m^3 Back left.
 Ground floor of furnace 2.9 ng/m^3
 Water heater, ground 1.6 ng/m^3
 pile of clothes in front water heater 6.7 ng/m^3
- 1029 START photo documents basement, raps out basement.
 Setup bag for disposal - booties - covers
- 1036 Lawn outside, under cover with heater 0.8 ng/m^3
- 1045 START - Hikel Pons Level C, Gloves, Respirator, nitrile gloves.
 Attic radiator 2.3 ng/m^3
 Beginning Run 4.0 ng/m^3 , 5.0 ng/m^3 , Avg 5.6 ng/m^3
 Breathing Zone 2.4 ng/m^3
 Stairs to 3rd floor 2.5 ng/m^3 , 3rd stair 3.9 ng/m^3 , 2nd stair 4.1 ng/m^3
 First stair 4.1 ng/m^3
 Cabinet with Radiator 8.4 ng/m^3 , visible bead.
- 1100 * under shelves in closet, beads all throughout, in cracks in
 hardwood on flooring, photo documented.
 Front of cabinet: 20.9 ng/m^3 → above Hg beads.
 9.7 ng/m^3 , 9.10 ng/m^3
 Against back wall, inside cabinet 7.9 ng/m^3

Crowson Ave Mercury Spill Site

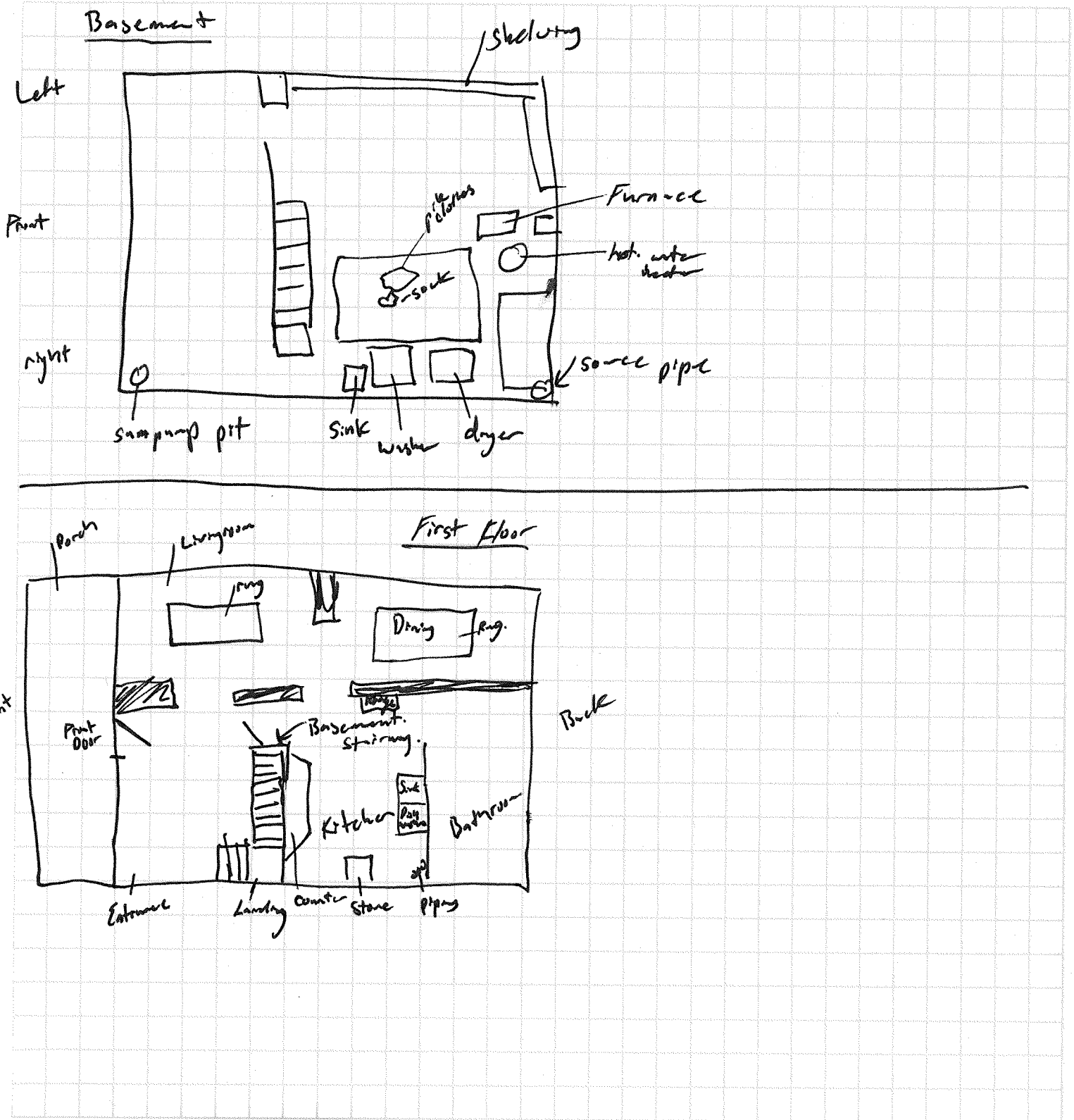
04 Jan 2013

- 1104 Furthest point in corner cabinet 13.1 $\mu\text{g}/\text{m}^3$
 5 feet from bottom stairs 94.5 $\mu\text{g}/\text{m}^3$
 4 feet from stairs up to 30.0 $\mu\text{g}/\text{m}^3$
 2 feet from stairs 1.6 $\mu\text{g}/\text{m}^3$
 Corner of stair base 10.9 $\mu\text{g}/\text{m}^3$ (3 feet from door)
 Within clothing, inside shelf of closet 5.6 $\mu\text{g}/\text{m}^3$
 Within hanging clothes 5.3 $\mu\text{g}/\text{m}^3$
 With hanging clothes closet to floor 4.7 $\mu\text{g}/\text{m}^3$
 Top shelf, middle cabinet 8.3 $\mu\text{g}/\text{m}^3$
 Bottom shelf middle cabinet 7.7 $\mu\text{g}/\text{m}^3$ } no visible Hg in middle cabinet.
- 1114 Beads of Hg noted ^{assumed} in all cracks between hardwood floor
 Short on floor 22. $\mu\text{g}/\text{m}^3$
- 1120 Hikel Dotts Level C, bags PPE, Don new booties
- 1122 Home owner states he was clearing work when spill happened,
 walked down stairs, through living room to make phone call to MDE.
 START fresh-air - calibrates Lances, replace dust filter.
 New Zero at 0.2 $\mu\text{g}/\text{m}^3$ read, at 0.0 $\mu\text{g}/\text{m}^3$
- 1132 Breathing in entry 1.6 $\mu\text{g}/\text{m}^3$
 Living room avg 2.7 $\mu\text{g}/\text{m}^3$, Avg 1.9 $\mu\text{g}/\text{m}^3$, 1.6 $\mu\text{g}/\text{m}^3$, 2.2 $\mu\text{g}/\text{m}^3$ ^{back of}
 Between Dining and Living 2.7, Avg. 1.5 $\mu\text{g}/\text{m}^3$ (between crevice of wood floor.
 Average Dining 1.6 $\mu\text{g}/\text{m}^3$
 Entry Kitchen and dining 1.9 $\mu\text{g}/\text{m}^3$
 Dining Room Avg 1.6 $\mu\text{g}/\text{m}^3$
 Kitchen Entry Way 1.6 $\mu\text{g}/\text{m}^3$, up to 2.4 $\mu\text{g}/\text{m}^3$
 Kitchen corner, far right, base of pipes 1.5 $\mu\text{g}/\text{m}^3$
 Kitchen corner, breathing by pipes 1.5 $\mu\text{g}/\text{m}^3$
 Base of stove at radiator 1.8 $\mu\text{g}/\text{m}^3$
 Center of Kitchen 1.0 $\mu\text{g}/\text{m}^3$, and at Entry
 Entrance basement/kitchen hall 2.4 $\mu\text{g}/\text{m}^3$
 Hall into entrance 2.5 $\mu\text{g}/\text{m}^3$
- 1149 Discuss results of assessment.
- 1156 Outside contained/ heated area 4.0 $\mu\text{g}/\text{m}^3$



The Trusted Integrator for Sustainable Solutions

Trust
Performance
People





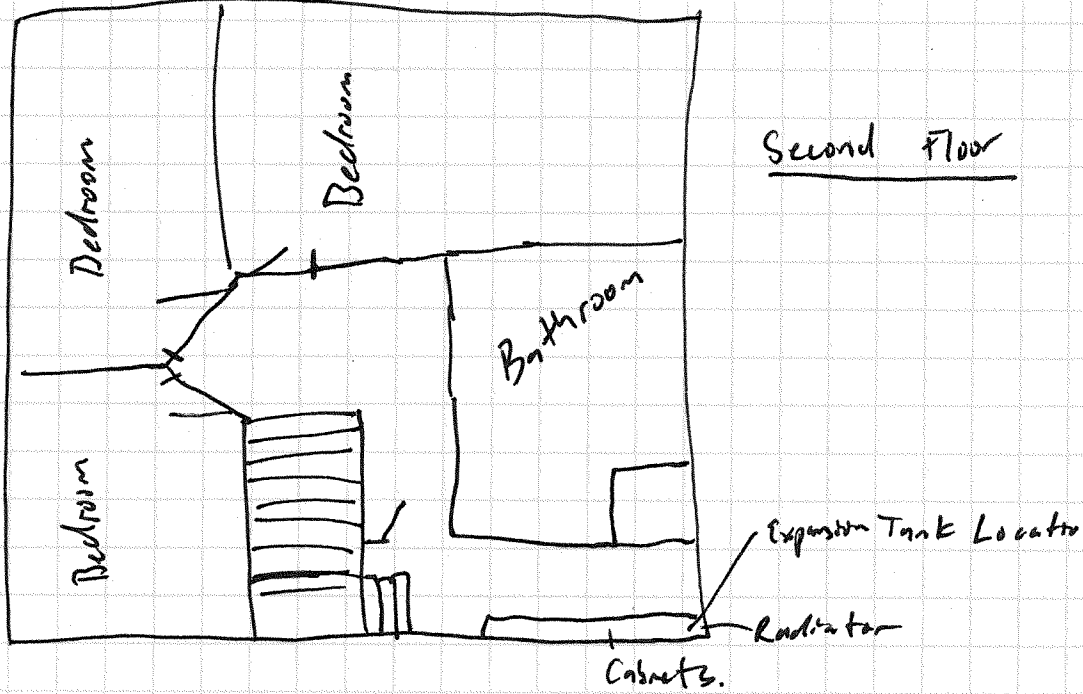
The Trusted Integrator for Sustainable Solutions

Trust

Performance

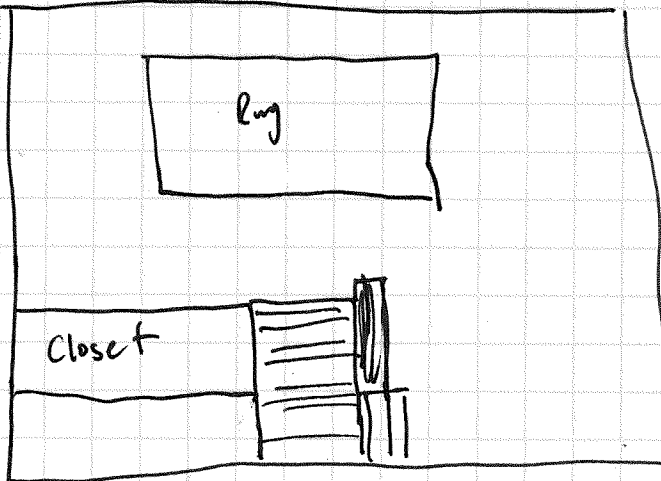
People

Front



Second Floor

Front



3rd Floor