



Barth Smelting

**99 Chapel Street
Newark, NJ**

Block 2442; Lots 10, 11, 12



Why is the EPA here?

- Discuss the sampling results at the Playground of Terrell Homes
- Action currently taken by EPA to reduce exposure from the Playground
- Additional action planned for future sampling activities

Barth Smelting Corp.



Site History



- **1930s:** General Lead Batteries Company
 - Manufactured lead-acid batteries
- **1940s:** Atlan Soap Works, Inc.
 - Soap manufacturer
- **1946 – 1982:** Barth Smelting & Refining Works
 - Produced brass and bronze ingots and non-ferrous metals and alloys. Also listed as a secondary copper refinery in NJ Industrial Directory
- **1982 – present:** AG Ship Maintenance Corp. & Portwide Cargo Securing Co.
 - container and chassis storage and repair company

99 Chapel Street (former Barth Smelting)



- Mostly paved on the portion of property facing Chapel Street
- Currently leased to Portwide Cargo, a container storage and repair company
- The rear portion of the property appears to be covered with asphalt paving and concrete slabs



EPA Timeline



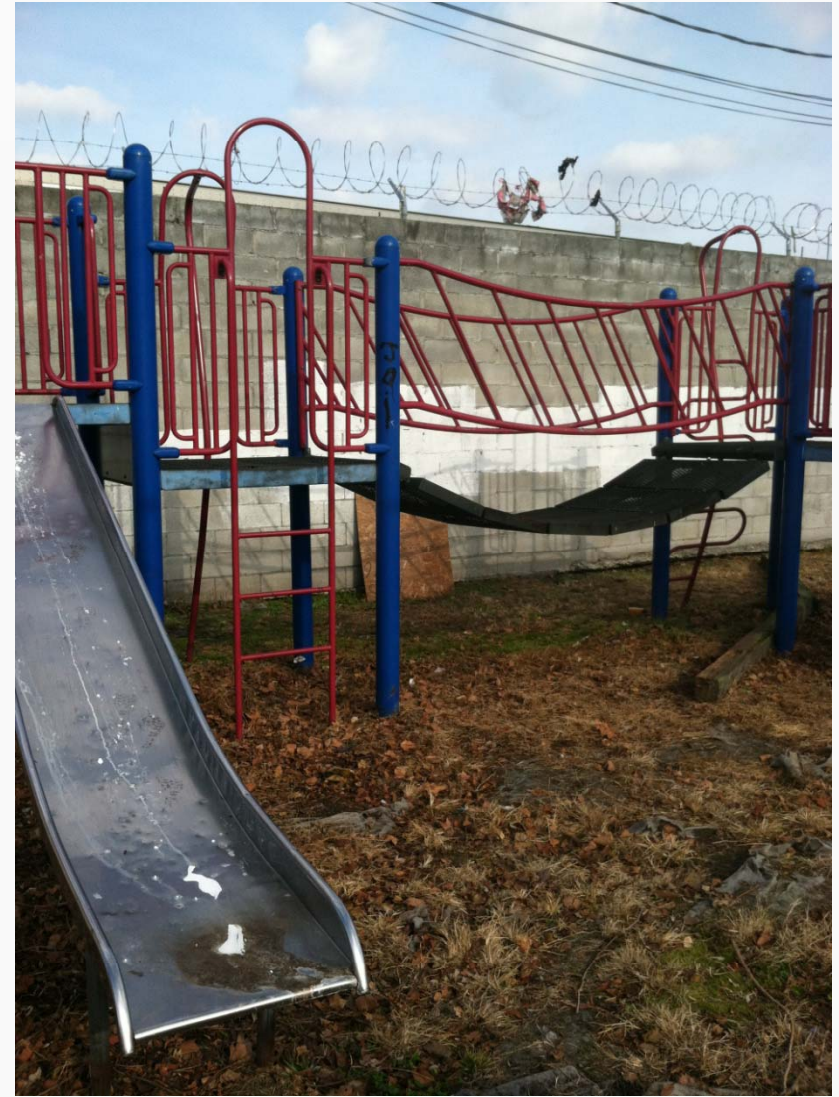
- **Summer of 2012** – EPA receives Pre-CERCLIS Screening assessment from NJDEP
- **September 2012** - EPA issued a statement that testing will be done on the playground soils at the Terrell Homes as a precaution
- **October 3, 2012** - EPA walk through at the Terrell Homes complex with the assistance of the Newark Housing Authority (NHA) personnel

EPA Timeline



- **October 29, 2012** - Original start date for soil sampling at Terrell Homes playground.
 - Sampling postponed due to Hurricane Sandy damage and storm surge
- **December 3 – 5, 2012** - Soil sampling conducted at Terrell Homes play area

Playground at Terrell Homes

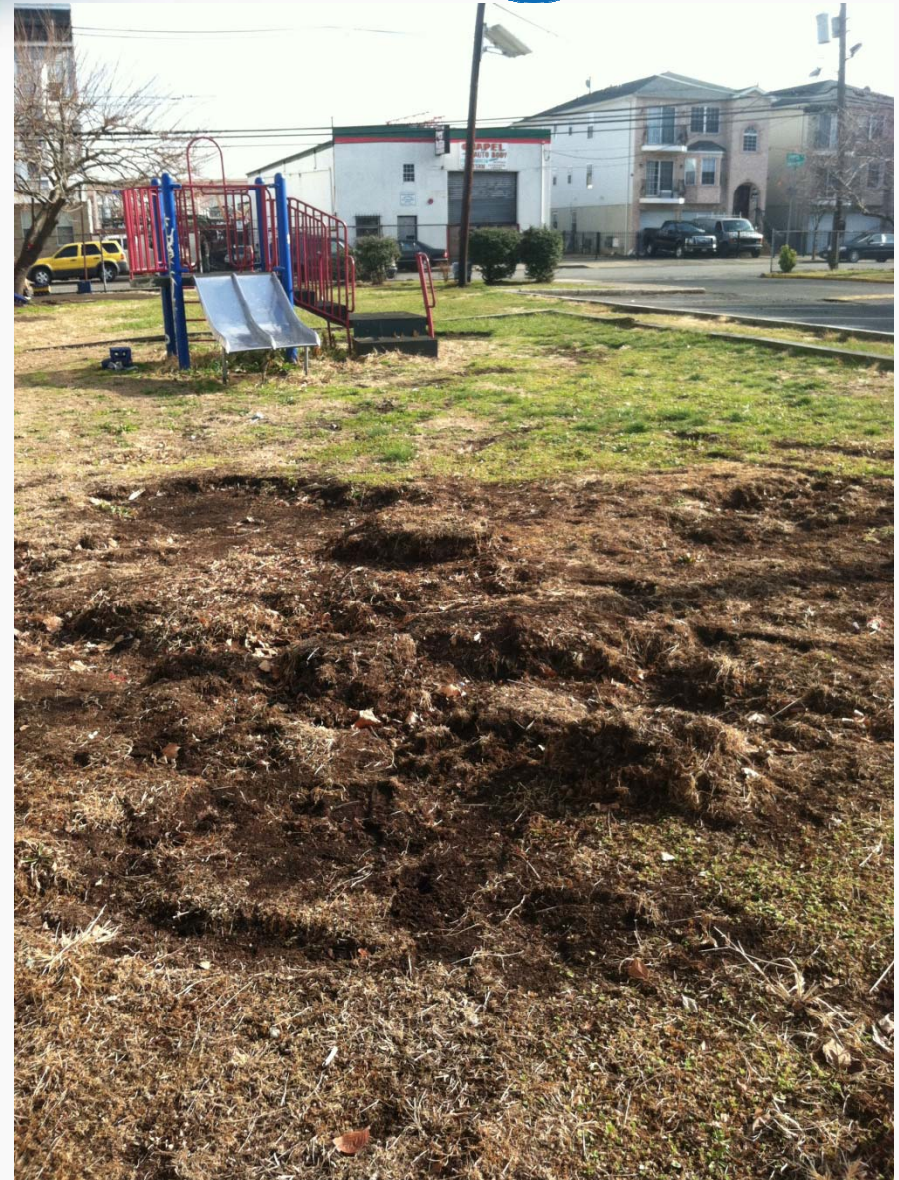


Soil Sampling



- EPA installed 22 soil borings in three separate areas within the playground:
 - Immediate playground area near play equipment
 - Western grassy area near the dumpsters
 - Eastern grassy area closer to Chapel Avenue
- Soil samples were collected from each boring at the following depths:
 - 0-1 inches
 - 1-6 inches
 - 6-12 inches
 - 12-18 inches
 - 18-24 inches

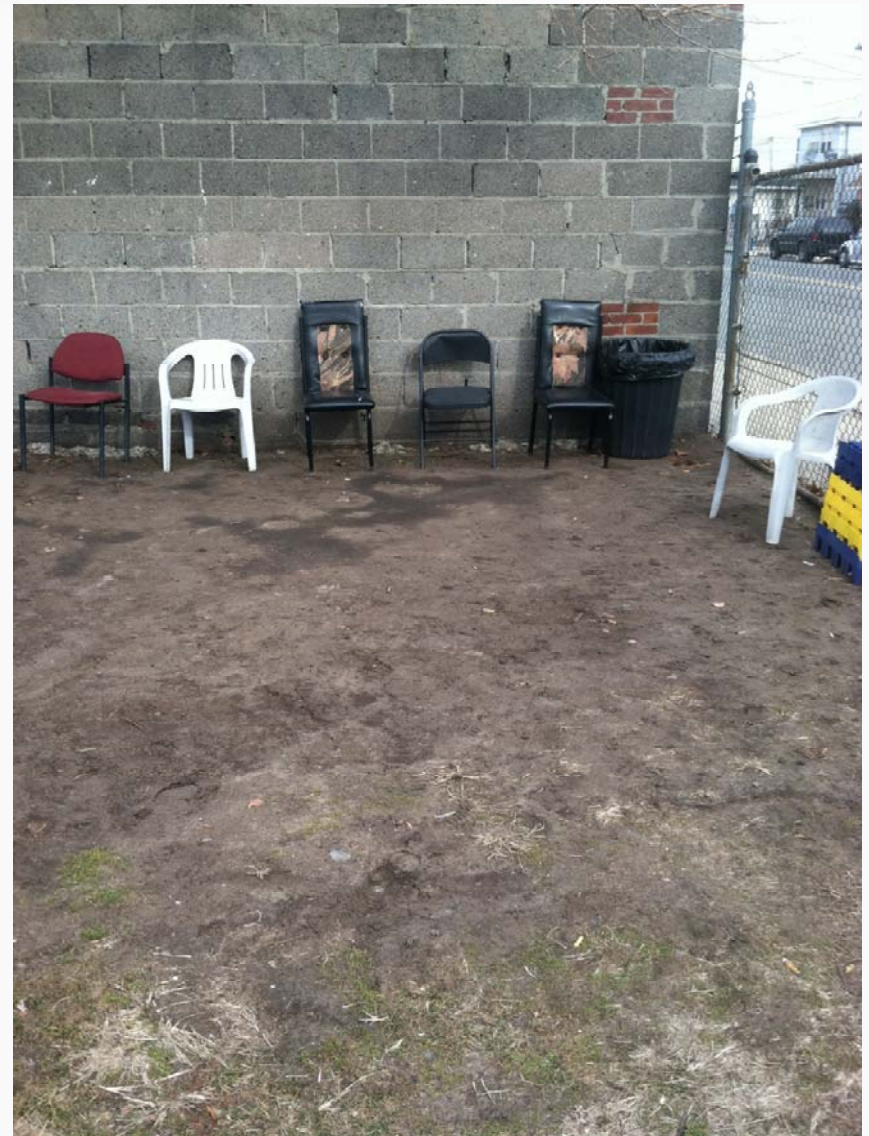
Immediate playground area



Western grassy area



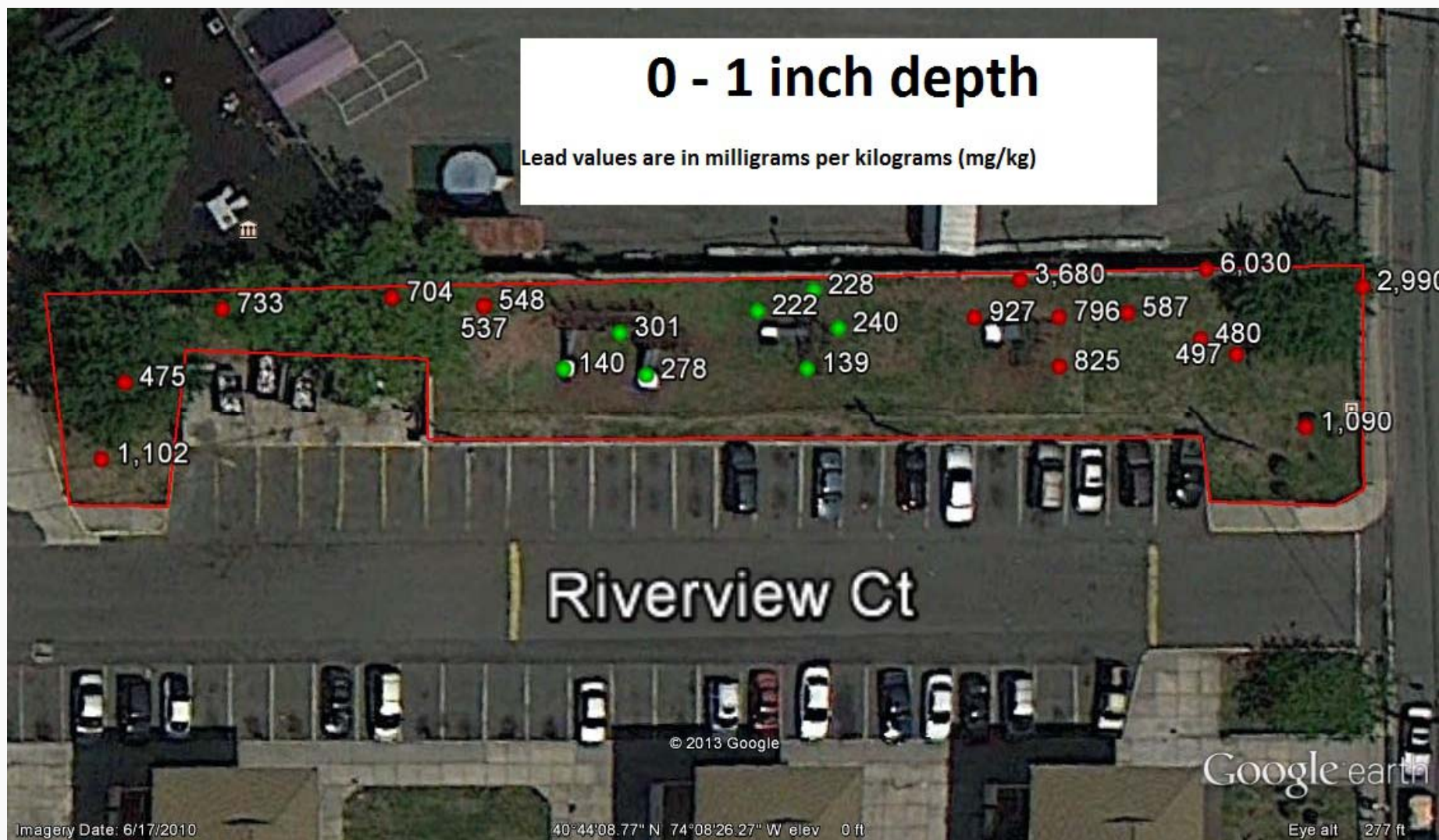
Eastern playground area





0 - 1 inch depth

Lead values are in milligrams per kilograms (mg/kg)





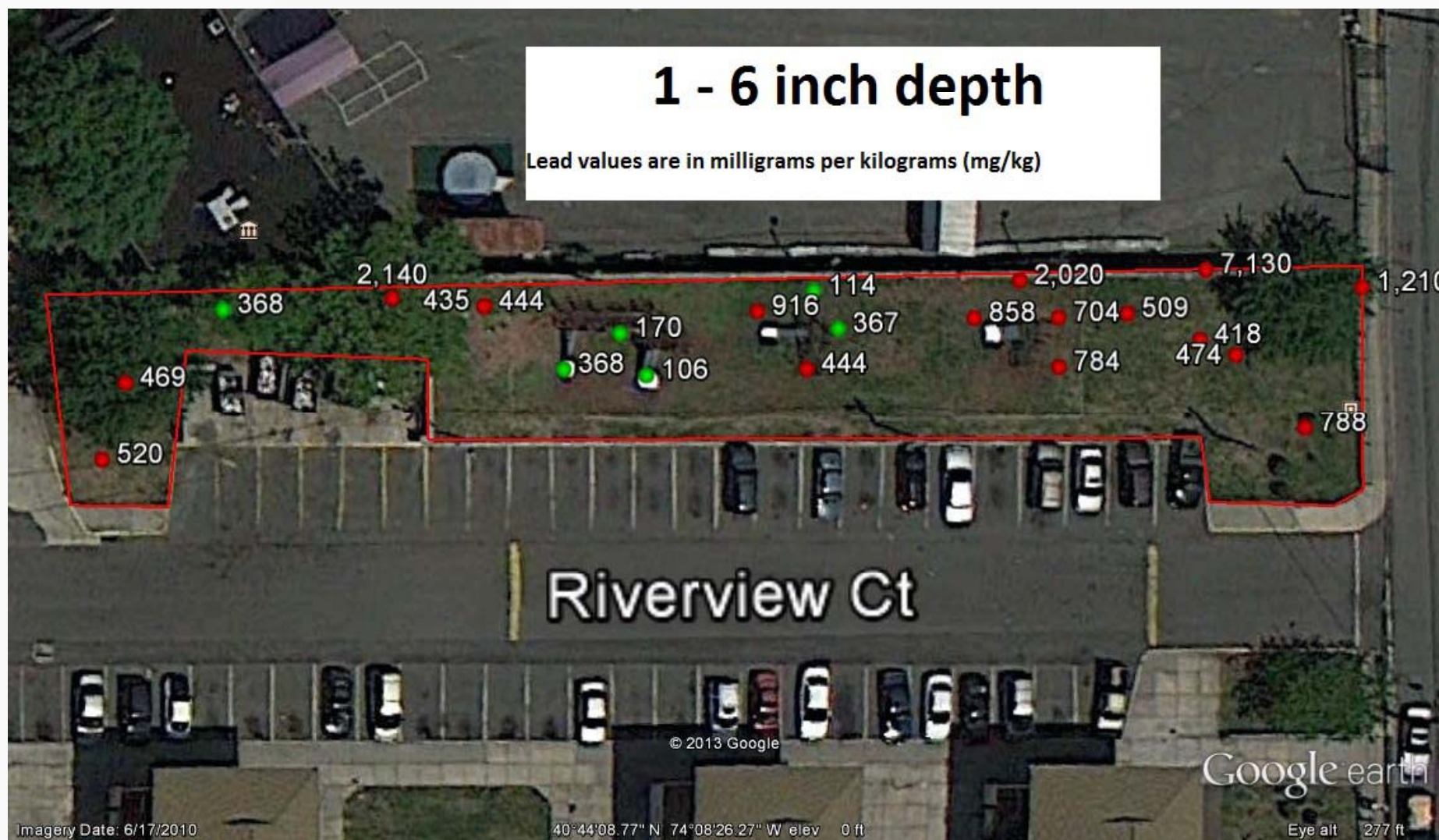
What does PPM mean?

- What is a **PPM**?
 - PPM = **P**arts **P**er **M**illion
 - A scientific measurement of the amount of a pollutant or contaminant in a sample
 - Just as one percent means out of a hundred, parts per million (ppm) means out of a million
- What do we compare soil lead levels to?
 - **400 ppm** is the EPA screening level for lead in residential soils



1 - 6 inch depth

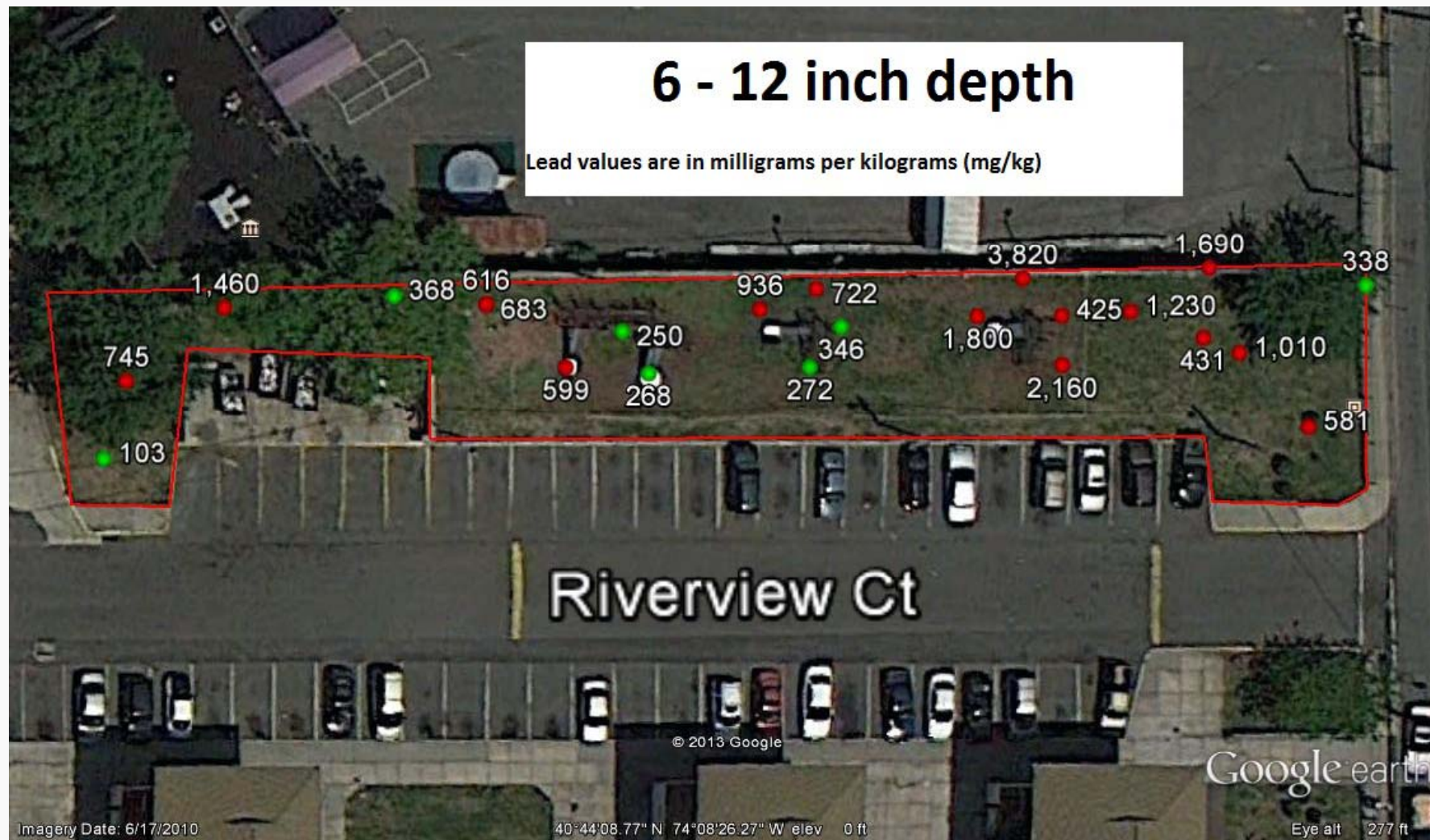
Lead values are in milligrams per kilograms (mg/kg)





6 - 12 inch depth

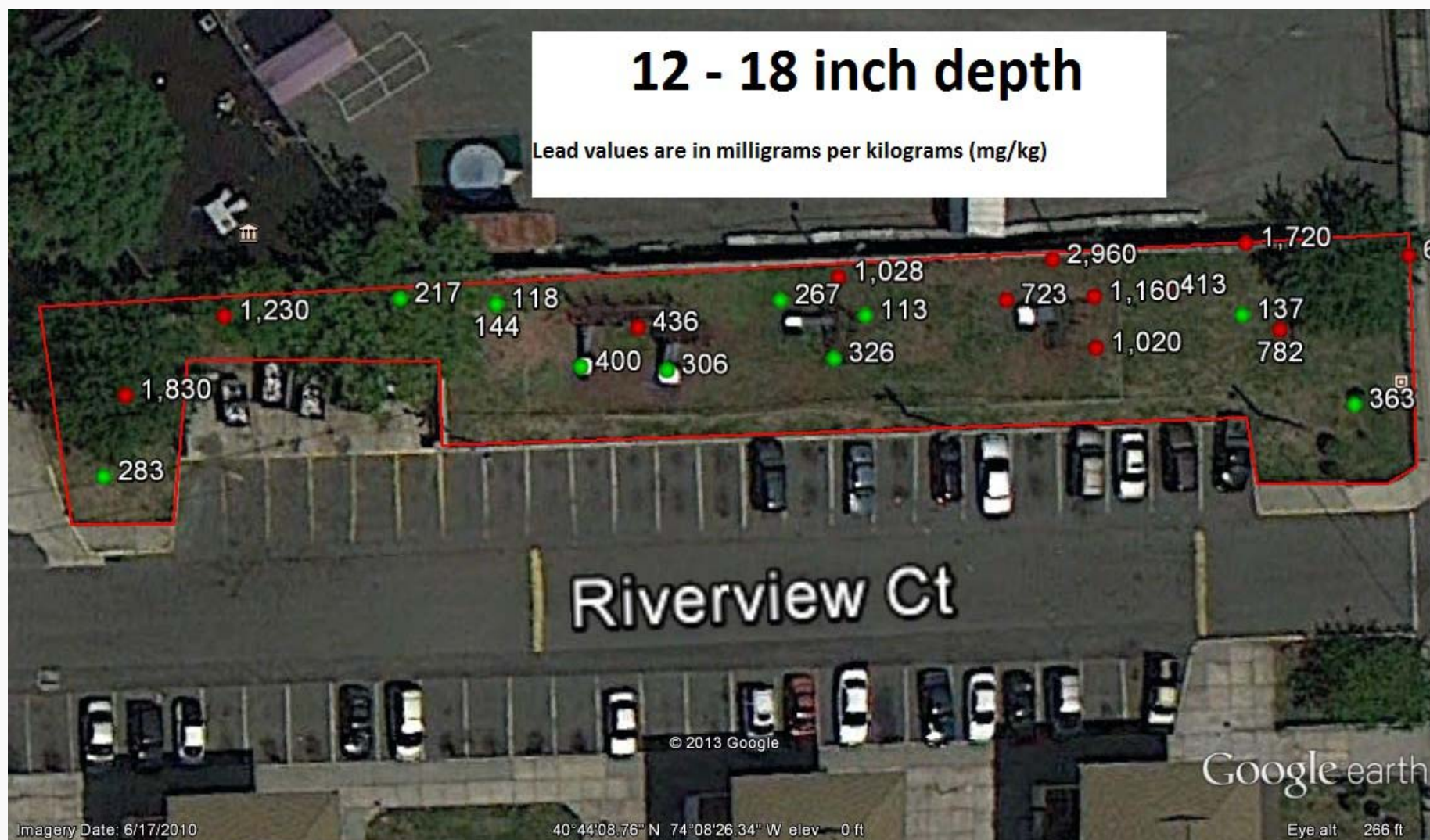
Lead values are in milligrams per kilograms (mg/kg)





12 - 18 inch depth

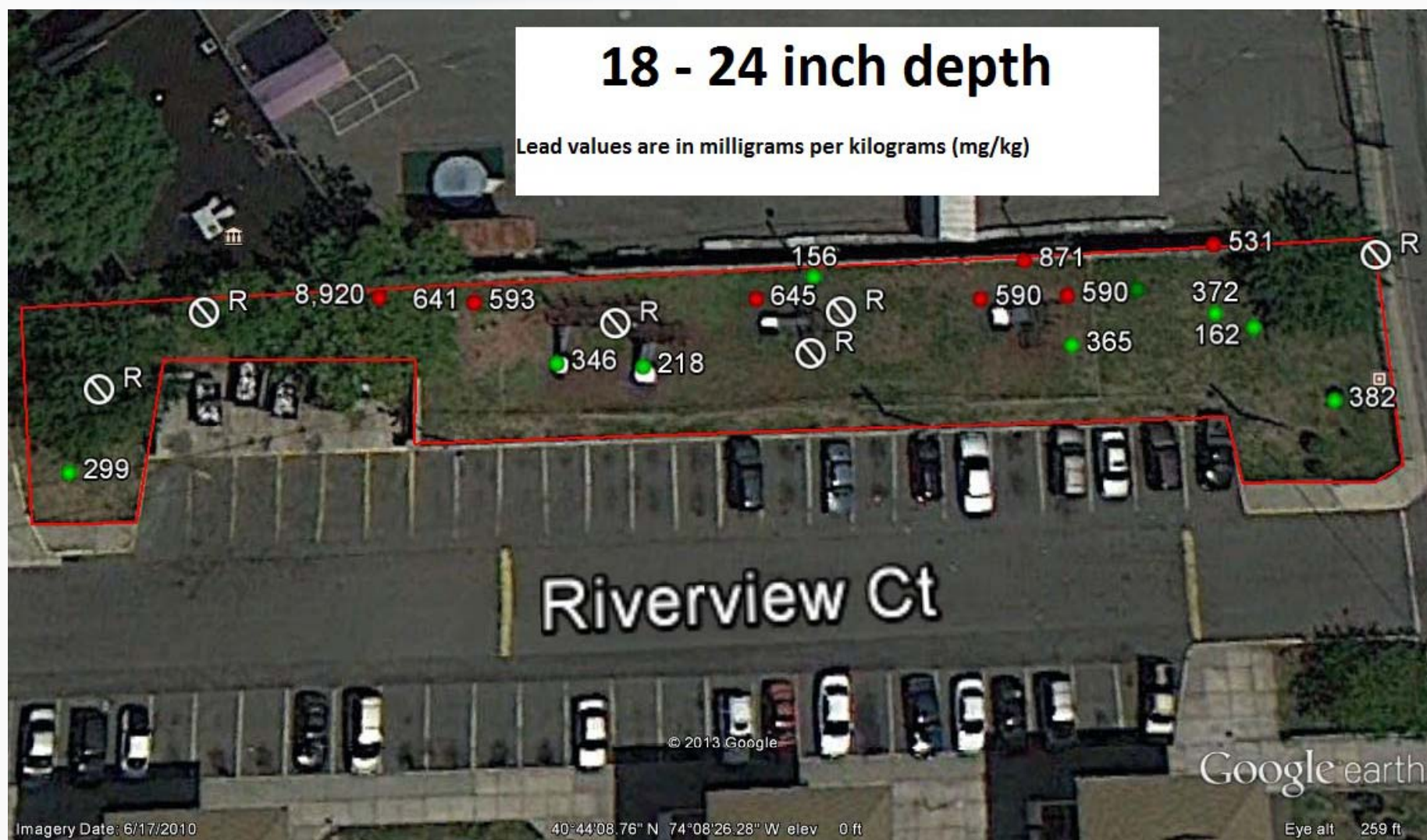
Lead values are in milligrams per kilograms (mg/kg)





18 - 24 inch depth

Lead values are in milligrams per kilograms (mg/kg)



Lead Results



- Validated lab data was received by the EPA late on **February 14th, 2013**
- Phone calls were placed to the City of Newark to inform them of EPA's lab results
- **February 15, 2013** – EPA met with NHA representatives on Feb 15th to provide fliers regarding the lead concentrations at the Park.

Actions Taken



- **February 19, 2013** - NHA requests EPA assistance to install the temporary fencing at the playground
- **February 20, 2013** –playground equipment removed by the NHA
- **February 21, 2013** - Fencing installed by EPA to restrict access to the playground
- **March 1, 2013** – Signs installed by EPA warning residents to stay out of the fenced area



MANTENGASE ALEJADO
Advertencia: Peligro de Plomo
La Agencia de Protección Ambiental está llevando a cabo una investigación sobre los riesgos del plomo presentes en el suelo
Para obtener información adicional, favor de llamar a nuestra línea gratuita: (800) 346-5009

KEEP OUT
Warning: Lead Hazard
The US Environmental Protection Agency is conducting an investigation of lead hazards present in the soil.
For additional information, contact: (800) 346-5009

History of Terrell Homes



- New Jersey Zinc & Iron Company operated on a large area of land from the Passaic River to the Morris Canal Bed from 1852 to 1910
- New Jersey Zinc & Iron produced zinc oxide, zinc metal, and spiegeleisen



What is a Smelter?



- A smelter, specifically a zinc smelter, is a facility that produces pure zinc by melting zinc ore
- **Definition:** Smelting is the melting of metals to get the pure metal
- **Definition:** Smelting is a process by which a metal is obtained from its ore by heating beyond the melting point

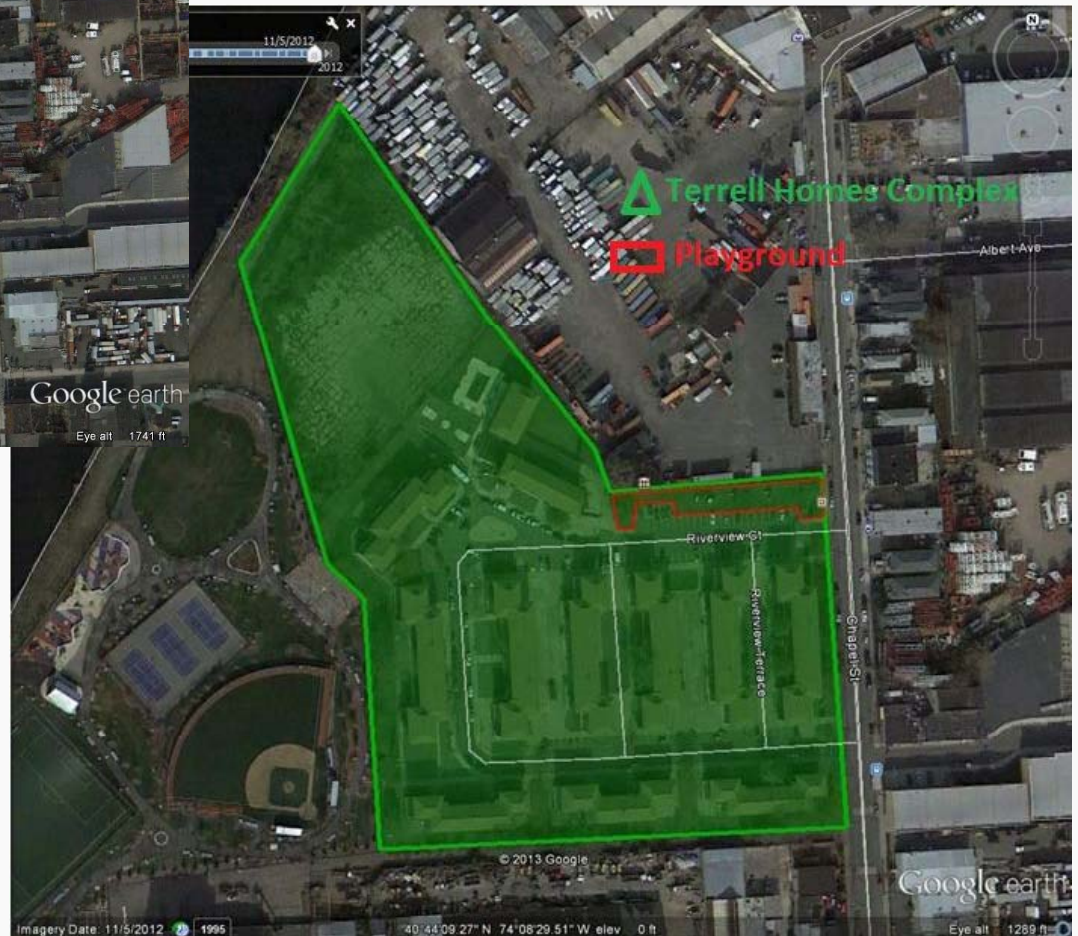




Millard E. Terrell Homes



New Jersey Zinc & Iron Works



Next Steps



- Soil sampling to be conducted late March or early April at remaining unpaved areas
- Utility mark out
- Will provide fact sheets before the sampling event
- All sampling results will be shared with the Community
 - Fact sheets/community updates
 - Public meetings



Geoprobe sampling



Next Steps



- Lead is common in urban settings
- Sources of lead include:
 - Industry
 - Lead based paint
 - Leaded gasoline
- Lead may be present in soil samples collected at the Terrell Homes



EPA Superfund



- Superfund is a federal program for the cleanup of hazardous waste sites
- EPA can cleanup lead from a facility using Superfund
- EPA cannot use Superfund to cleanup lead contamination from other man-made sources (leaded-gasoline, lead paint, historic fill material)

EPA Superfund



- High levels of lead in the community and at Terrell Homes that **IS** from a facility can be cleaned up through Superfund
- Lead in the community that **IS NOT** from a facility can not be cleaned up through Superfund.
 - EPA would rely on other state and local programs to control lead exposure

Next Steps



- Testing will be done to determine if:
 - High levels of metals are present in other unpaved areas at the Terrell Homes
 - If contamination is from former industry that operated on or around the property
 - If the metals are present are levels that are a threat to public health
- EPA will consult with our partner health agencies, and decide if more actions are needed to protect public health
 - Cleanup/removal action
 - additional sampling

**For additional information and
updates on EPA activities:**



Natalie Loney
Community Involvement Coordinator, US EPA
(212) 637-3676

Sophia Kelley
Community Involvement Coordinator, US EPA
(212) 637-3670

Kimberly Staiger
On-Scene Coordinator, US EPA
(732) 452-6415

www.epaosc.net/barthsmelting

[www.epa.gov/region2/superfund/removal/
barth/index.html](http://www.epa.gov/region2/superfund/removal/barth/index.html)