

## **EMERGENCY CONTINGENCY PLAN**

### **BAYCOTE METAL FINISHING REMOVAL SITE MISHAWAKA, ST. JOESPH COUNTY, INDIANA**

**APRIL 2013**

#### **SITE DESCRIPTION**

The Baycote Metal Finishing Removal Site (Site) is located 1302 Industrial Drive in Mishawaka, St. Joseph County, Indiana. The coordinates of the Site are 41°39'0.03" North latitude and 86°09'57.11" West longitude. The Site is bordered by industrial properties to the north, east, and south and Industrial Drive and industrial properties to the west. Residential properties are located approximately 700 feet to the west.

The Site contains asphalt parking and a large building measuring approximately 250 by 250 feet. The one-story building is constructed of sheet metal and cement blocks.

#### **SITE HISTORY**

The onsite building is a former electroplating facility that electroplated and anodized steel casings with zinc, cadmium, and chrome for automotive, recreational vehicle, and trailer manufacturers. The facility ceased operations in January 2008; however, according to facility records, 110,953 gallons of waste remained onsite at the time.

#### **U.S. EPA WORKPLAN**

U.S. EPA conducted a site assessment in March 2011 and identified over 332 drums, vats, and other miscellaneous containers throughout the Site. Most containers were labeled, but the volumes of the contents were unknown. Containers identified during the site assessment contain various materials, including the following: zinc cyanide solution, chloride zinc acid, yellow chromate, acid copper bath, black hexavalent chromate post dip, sulfuric acid, hydrochloric acid, and unlabeled/unidentified materials. Contaminants and conditions at the Site met criteria established in the National Oil and Hazardous Substances Pollution Contingency Plan (NCP) for a time-critical removal action by the U.S. EPA. The time-critical removal action is being conducted to mitigate endangerment posed to human health, human welfare, and the environment by Site conditions.

The removal project consists of characterizing, segregating, consolidating, and disposing of hazardous substances and wastes (drums, liquids, sludges, other hazardous substances). Site activities commenced on May 29, 2012. On May 29, 2012, EPA, START and ERRS mobilized to the site to initiate the removal action. During the summer and fall of 2012, the removal action focused on removing wastes and decontaminating equipment from the building with the exception of Area W. Approximately 90,000 gallons of liquid waste and 880,000 pounds of solid

waste were removed from the site.

On March 18, 2012, EPA, START and ERRS re-mobilized to site to address wastes in Area W. Area W is located under a partially collapsed roof and contains a large pit. Analytical results indicate the presence of chromium / cadmium in the pit liquids and solids. The second phase of the removal is anticipated to take several months to complete.

In the absence of site activities taking place, the facility will be locked and secured to prevent trespassing. In the event of a required response by local emergency authorities during the U.S. EPA removal activities, the following protocols provide necessary guidance for the following potential response events:

- Vandalism/Trespass
- Medical Emergencies
- Fire/Explosion

### **VANDALISM/TRESPASS**

If an event of vandalism/theft occurs within the exclusion zone during work hours, the Mishawaka Police Department will respond and coordinate with U.S. EPA On-Scene Coordinator (OSC) Paul Atkociunas. If any incidents of trespassing/vandalism occur, U.S. EPA OSC Atkociunas should be immediately notified of the situation. If any vandalism/trespassing occur outside of the exclusion zones standard local protocols will be utilized by the Mishawaka Police Department.

### **MEDICAL EMERGENCIES**

Medical emergencies which occur within the exclusion zone will be coordinated by decontaminating and removing injured personnel from the exclusion zone to the support zone. Rescue operations in the exclusion zone are to be conducted only if it is not possible for the injured person to be brought outside to EMS personnel. ERRS crews will decontaminate the victim prior to the arrival of ambulance service on site if possible. The victim will be picked up at the support zone by EMS personnel.

The victim should be decontaminated to the maximum extent possible, paying particular attention to the areas of the body or clothing that were known to be in contact with Site contaminants. If the injury is minor, a full decontamination should be completed and first aid administered prior to transport. If the victim's condition is serious, at a minimum, emergency decontamination should be completed using the eye wash station located in the support zone.

For medical emergencies requiring transport to a hospital, the first choice is to transport the victim to the:

St. Joseph Regional Medical Center  
5215 Holy Cross Parkway  
Mishawaka, IN 46545  
(574) 259-2431

A map showing directions to the hospital from the site is included in Attachment 2 and is also presented in the Site-specific Health and Safety Plan (HASP).

### **FIRE/EXPLOSION**

In the event of a fire/explosion within the exclusion zone during work hours, on-site workers will meet at a pre-determined upwind rally location and notify 911 and the Mishawaka Fire Department and ambulance service. The first-arriving engine officer will assume control of firefighting operations. All other supporting personnel will meet at an upwind location and await assignment of duties. The Mishawaka Fire Department will evacuate any persons located in the immediate vicinity if necessary. The members of the Mishawaka Fire Department will access the fire from a perimeter location without entering the Site exclusion zone.

In the event that Site entry is necessary, the South Bend Fire Department HAZMAT Team will be called to respond to the fire/explosion incident. To notify the South Bend Fire Department HAZMAT team, call (574) 235-9255. Effective immediately, no one is to enter the exclusion zone for firefighting purposes without appropriate respiratory protection. All firefighting for this should be attempted from a perimeter position if possible.

Telephone numbers of personnel who should be contacted in the event of an incident during non-work hours are listed below. At a minimum, the following personnel should be notified:

- Mishawaka Fire Department
- U.S. EPA OSC Paul Atkociunas

In the event of heavy smoke or toxic gas emission, an evacuation may be necessary and should proceed according to St. Joseph County Emergency Management guidelines. After evacuation of nearby persons, START may assist with any necessary air monitoring in the impacted area. START assistance will be coordinated through U.S. EPA OSC Atkociunas.

**LIST OF CONTACTS**  
**BAYCOTE METAL FINISHING REMOVAL SITE**  
**MISHAWAKA, ST. JOESPH COUNTY, INDIANA**

<b>LOCAL AGENCIES</b>	<b>PHONE</b>	<b>CONTACT</b>
Mishawaka Police Department 200 N. Church St., Mishawaka, IN	911 (574) 258-1678	Ken Witkowski, Chief Non-Emergency
Mishawaka Fire Department 333 E. Douglas Rd., Mishawaka, IN	911 (574) 247-0928	Dale Freeman, Chief Non-Emergency
St. Joseph Regional Medical Center 5215 Holy Cross Parkway, Mishawaka, IN	(574) 259-2431	Non-Emergency

**FEDERAL/STATE/COUNTY**

U.S. EPA OSC	(312) 886-7502 (Office) (312) 919-4173 (Cell)	Paul Atkociunas
U.S. EPA Region V (Emergency Only)	(312) 353-2318	(24-Hour)
National Spill Response Center	(800) 424-8802	(24-Hour)
IDEM (Emergency Only) IDEM OSC Northern Region	(888) 233-7745 (574) 274-9103	(24-Hour) Rich Hackel
South Bend Fire Department HAZMAT Team	(574) 235-9255	(24-Hour)

**U.S. EPA CONTRACTORS**

START	(312) 424-3314 (Office) (260) 348-4911 (Cell)	Trenna Seilheimer
	(708) 284-2490 (Cell) (773) 947-4064 (Cell)	Jeff Bryniarski Jon Colomb
ERRS	(312) 446-6325 (Cell) (708) 473-7124 (Cell)	Toby Viehweg John Behrens

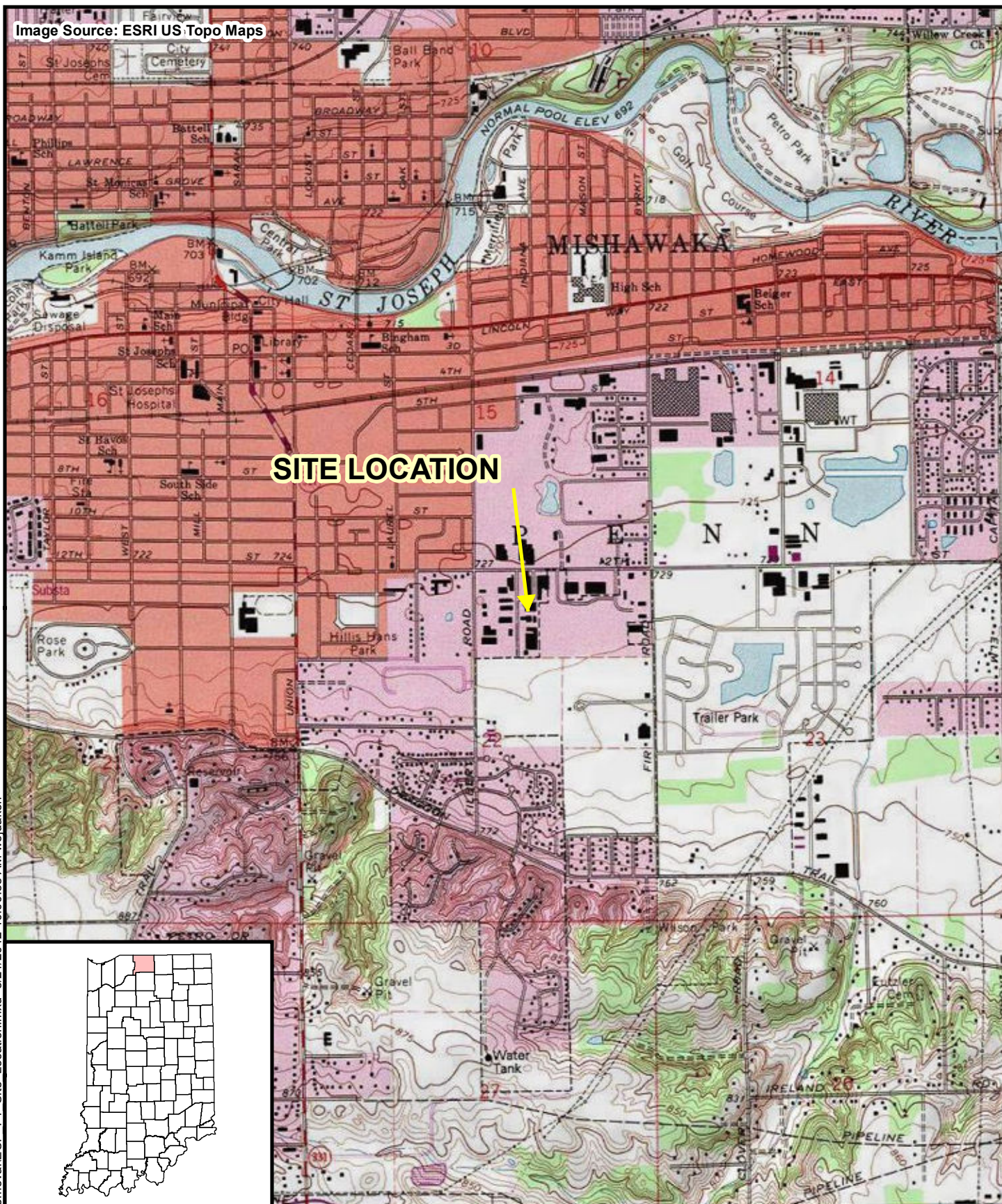
Version 2  
Amended: April 2, 2013

## **ATTACHMENT 1**

Site Location Map



Image Source: ESRI US Topo Maps



#### Legend

0 2,000 Feet



Prepared for:  
**U.S. EPA REGION V**

Contract No: EP-S5-06-04  
TDD: S05-0001-1205-001  
DCN: 1843-2F-AWBU



Prepared By:  
**WESTON SOLUTIONS, INC**

20 N. Wacker Drive  
Suite 1210  
Chicago, Illinois 60606

#### Figure 1

Site Location Map  
Baycote Metal Finishing Site  
Mishawaka, St Joseph County, Indiana

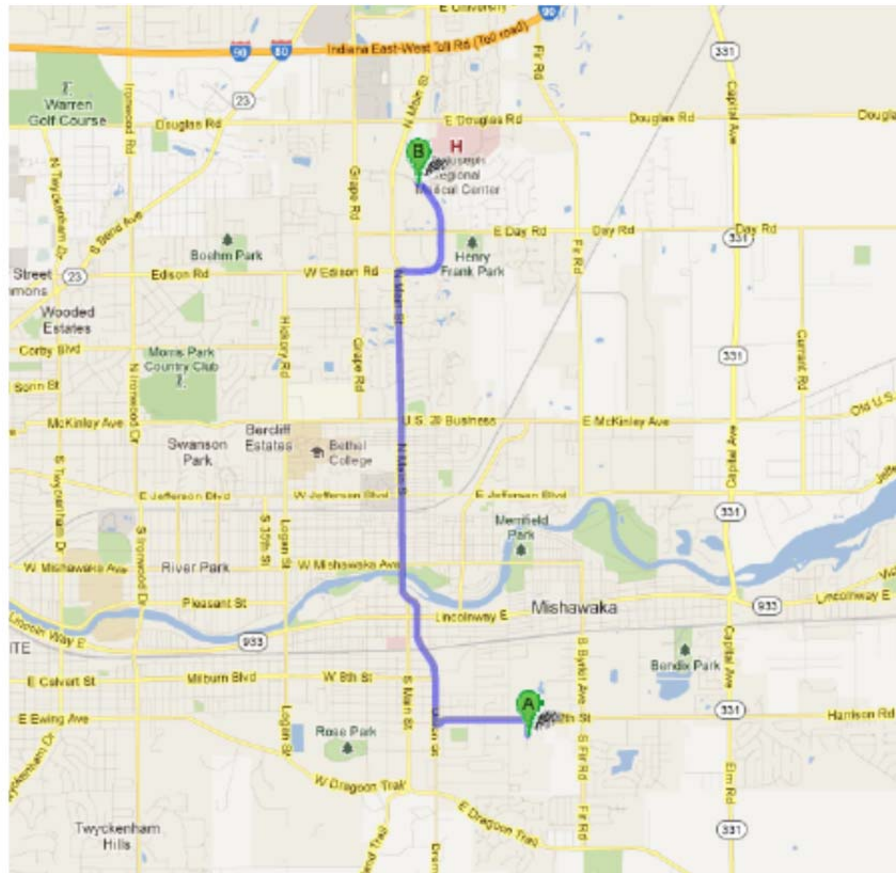


Version 2  
Amended: April 2, 2013

## **ATTACHMENT 2**

### **Hospital Map**

St. Joseph Regional Medical Center  
5215 Holy Cross Parkway  
Mishawaka, IN 46545  
(574) 259-2431



**A** 1302 Industrial Dr, Mishawaka, IN 46544

1. Head north on Industrial Dr toward E 12th St  
go 0.1 mi  
total 0.1 mi
2. Turn left onto E 12th St  
About 2 mins  
go 0.6 mi  
total 0.7 mi
3. Turn right onto Union St  
About 1 min  
go 0.4 mi  
total 1.1 mi
4. Continue onto S Church St  
About 2 mins  
go 0.6 mi  
total 1.6 mi
5. Continue onto N Main St  
About 5 mins  
go 2.2 mi  
total 3.9 mi
6. Turn right onto Edison Lakes Pkwy  
About 3 mins  
go 0.9 mi  
total 4.7 mi
7. Turn left onto Holy Cross Pkwy  
go 26 ft  
total 4.7 mi

**B** Holy Cross Pkwy, Mishawaka, IN 46545