

US EPA and KDEP

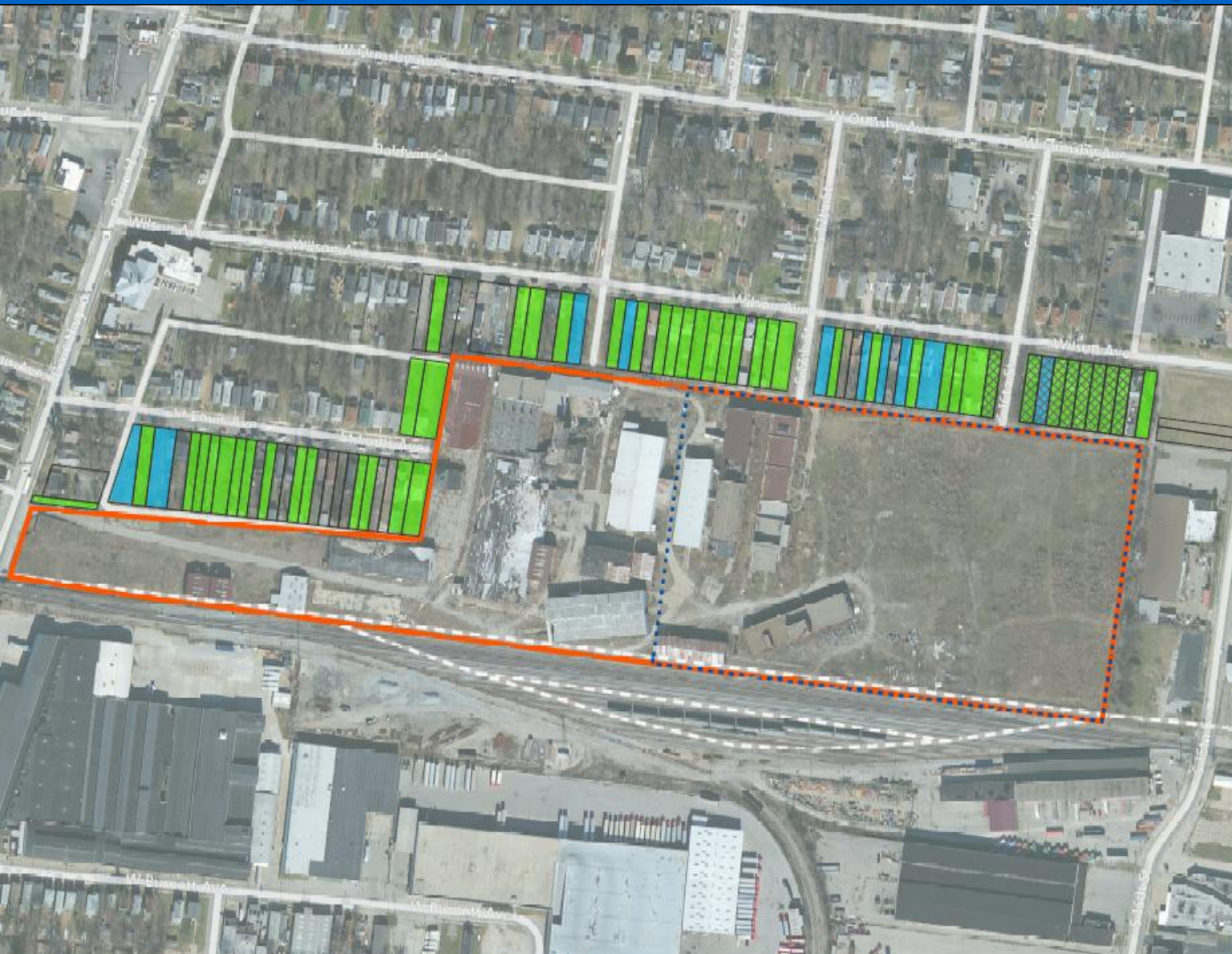


**Black Leaf Chemical Site
Update to the WJCCTF
September 17, 2013**

Former Pesticide Plant



September 9 Status Map



Legend

-  EPA Removal Action
-  KDEP Removal Action
-  No Access
-  Completed Properties
-  Former Black Leaf Site
-  Site Boundary

0 150 300
Feet



Louisville,
Jefferson County,
Kentucky



**BLACK LEAF CHEMICAL
REMOVAL ACTION
LOUISVILLE, JEFFERSON
COUNTY, KENTUCKY
TDD No. THA-05-001-0186**

**BLACK LEAF
REMOVAL PROPERTIES
SEPTEMBER 9, 2013**



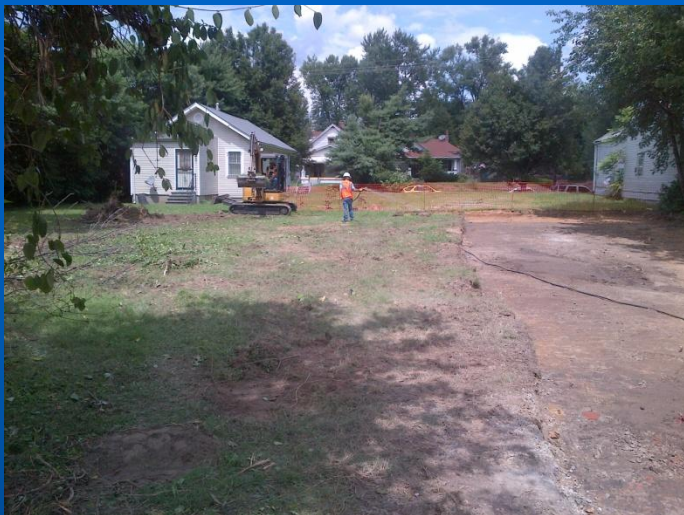
CHRONOLOGY OF ACTIVITIES

- July 29 – Site Preparation begins on Industrial Park Property.
- August 19 – Excavation begins in neighborhood.
- As of September 17:
 - 10 lots restored
 - Over 1,300 tons of contaminated soil disposed of at Outer Loop Landfill
 - Approximately \$450,000 spent to date

Excavation Work



Restoration Work



Air Monitoring



Air Monitoring Data Summary

Black Leaf Removal Action		
8 Hr. Time Weighted Averages (micrograms per cubic meter)		
Run Date	Data Ram Linc 202	Data Ram Linc 32
8/20/2013	22.39	17.96
8/21/2013	27.28	32.69
8/22/2013	24.39	31.18
8/26/2013	38.19	57.6
8/27/2013	37.11	42.45
8/28/2013	26.95	24.55
8/29/2013	43.25	36.51
9/10/2013	46.00	39.23
9/11/2013	45.69	41.91
9/12/2013	45.54	36.08
9/13/2013	14.15	4.27

- All average values less than total dust level of 125 ug/m³
- No exceedances of Ambient Air Quality Standard for lead