



**CONESTOGA-ROVERS  
& ASSOCIATES**

Prepared for:

**CN**

# INCIDENT ACTION PLAN COVER SHEET

Incident Name	New Augusta Derailment
Incident Number	NRC Report #: 1072598
Date Prepared	February 1, 2014
Time Prepared	0100 hours
Prepared by	Troy S. Bernal CRA, Inc.
Latitude	31.204477 N
Longitude	89.054875 W
Operational Start Date/Time	February 1, 2014 @ 0800 hours
Operational Finish Date/Time	February 1, 2014 @ 2000 hours
<b>APPROVAL</b>	
FOSC <i>Leo Frangal</i>	US EPA
SOSC <i>Emu</i>	MDEQ
EMA <i>Dee Danaher</i>	Perry County
RP <i>CS</i>	<b>CN</b>

## TABLE OF CONTENTS

X	Incident Briefing (ICS 201)		
X	Summary of Current Actions		
X	Resources Summary		
X	Incident Objectives (ICS 202)		
X	Organization Assignment (ICS 203)		
X	Assignment List (ICS 204)		
X	Communications Plan (ICS 205)		
X	Medical Plan (ICS 206)		
X	Daily Safety and Health Message		



**CONESTOGA-ROVERS  
& ASSOCIATES**

Prepared for:  
**CN**

# INCIDENT BRIEFING ICS 201 – 1A

## MAP / SKETCH



Approximate Area of Derailment

February 1, 2014 @ 0800 hours to 2000 hours



February 1, 2014 @ 2000 hours

# INCIDENT BRIEFING ICS 201 – 1B

## MAP / SKETCH



Perimeter Air Monitoring Locations (AreaREAs)

February 1, 2014 @ 0800 hours to 2000 hours



**CONESTOGA-ROVERS  
& ASSOCIATES**

Prepared for:

**CN**

## **INCIDENT BRIEFING**

### **ICS 201 – 2A**

#### **SUMMARY OF CURRENT ACTIONS**

##### **January 31, 2014:**

**0900 hours: Canadian National train traveling from Jackson, Miss. To Mobile, Ala. derailed in New Augusta, Miss. approximately 20 railcars derailed. Approximately a 1/2 mile radius of residents was evacuated.**

- First responders were mobilized to derailment area.
- US Highway 98 was shut down.
- Sand was placed on/in culverts as a precautionary measure to contain released materials within derailment area.
- Perimeter and Work Zone air monitoring was set up utilizing fixed air monitors (AreaREA), and roaming air monitors (Multi/UltraREA).
- Frac tanks were delivered to derailment area and staged.
- Methanol railcar was up-righted, bermed, leak stopped, and secured.
- Crude oil railcars were removed from derailment area and placed in staging area for future offloading and removal.
- Replacement/temporary track was delivered to derailment area
- Vacuum trucks began removing liquid fertilizer from railcar and offloading into frac tanks.
- Track repair began as railcars are being removed.

##### **February 1, 2014**

- Continued track repair
- Continued staging of railcars
- Continued perimeter and work zone air monitoring

**February 1, 2014 @ 0800 hours to 2000 hours**



**CONESTOGA-ROVERS  
& ASSOCIATES**

Prepared for:

**CN**

## INCIDENT BRIEFING ICS 201 – 3

### RESOURCES SUMMARY

RESOURCE	PROVIDER	ON-SCENE	ASSIGNMENT
Excavators	RJ Corman	Jan 31, 2014	Train Wrecking
Excavators	B&P	Jan 31, 2014	Train Wrecking
Excavators	Hulcher	Jan 31, 2014	Train Wrecking
Side Booms	RJ Corman	Jan 31, 2014	Train Wrecking
Side Booms	Hulcher	Jan 31, 2014	Train Wrecking
Frac Tanks	Gator	Jan 31, 2014	Material Containment
Command Trailer	USES	Jan 31, 2014	Communications
Haz Mat	USES	Jan 31, 2014	Recovery/Transfers
Air Monitoring Equipment	CRA	Jan 31, 2014	Air Monitoring

### PERSONNEL SUMMARY

COMPANY	ON-SCENE	ASSIGNMENT
(30) USES	Don Warren/Glenn Thompson	Recovery/Transfers
(30) Hulcher	Randy Pinkston	Train Wrecking
(12) B&P	Spinner Vaughn	Train Wrecking/Environmental
(12) RJ Corman	Sam White	Train Wrecking
(7) CRA, INC	Troy S. Bernal	Environmental Assessment (air, water, soil)

February 1, 2014 @ 0800 hours to 2000 hours



**CONESTOGA-ROVERS  
& ASSOCIATES**

Prepared for:

**CN**

## **RESPONSE OBJECTIVES ICS 202**

Incident Name	New Augusta Derailment
Incident Number	NRC Report #: 1072598 Report #:
Date Prepared	February 1, 2014
Time Prepared	0100 hours
Prepared by	Troy S. Bernal CRA, Inc.
Latitude	31.204477 N
Longitude	89.054875 W
Operational Start Date/Time	February 1, 2014 @ 0800 hours
Operational Finish Date/Time	February 1, 2014 @ 2000 hours

### **OBJECTIVES FOR OPERATIONAL PERIOD**

1. Determine flow directions of drainage features - activity will continue throughout the operational period
2. Evaluate mixing sawdust or other solidification media with released crude oil to solidified material for loading - activity will continue throughout the operational period
3. Establish locations to conduct visual inspections of surrounding surface water and drainage features - activity will continue throughout operational period
4. Continue with air monitoring of perimeter and work zone - activity will continue throughout operational period
5. Start transfers of product - activity will continue throughout operational period
6. Evaluate site and prepare for potential rain events - activity will continue throughout operational period
7. Open track - estimate time is 1130 hours
8. People allowed back in homes south of US Highway 98
9. CN Police secure entry point to work area with log in/out sheet







**CONESTOGA-ROVERS  
& ASSOCIATES**

Prepared for:  
**CN**

# RESPONSE OBJECTIVES ICS 202

## WEATHER REPORT

From [www.Intellicast.com](http://www.Intellicast.com)

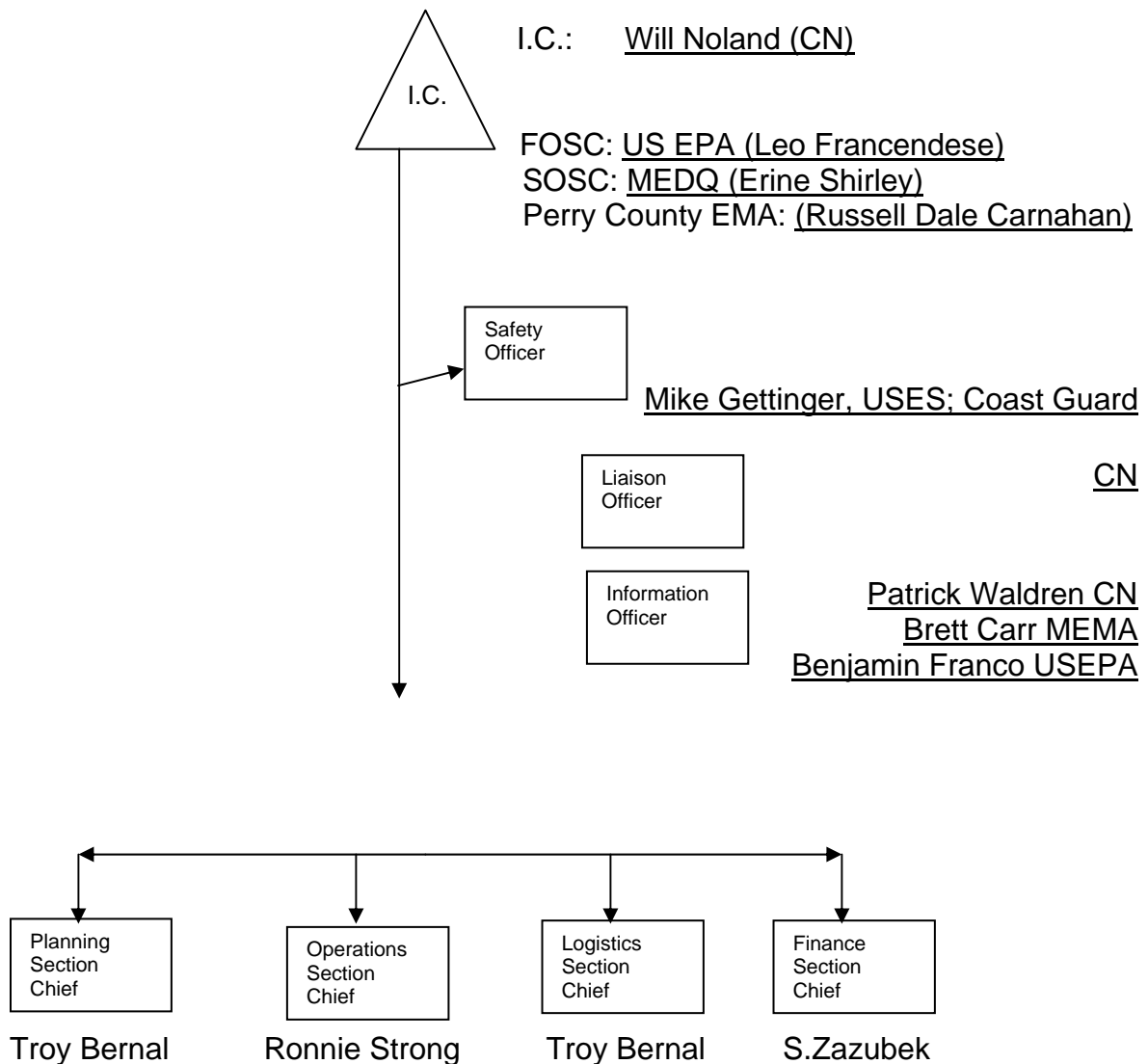
<b>Saturday, February 01</b>  PM Showers <a href="#">View Detailed Hourly »</a>	<b>67°</b> <b>55°</b>	<b>Day:</b> Mostly cloudy skies with a few showers later in the day. High 67F. Winds SSE at 5 to 10 mph. Chance of rain 30%. <b>Night:</b> Showers in the evening, then cloudy overnight. Low around 55F. Winds light and variable. Chance of rain 30%.	<b>Rise:</b> 6:48 AM <b>Set:</b> 5:31 PM <b>Moon Rise:</b> 7:49 AM <b>Moon Set:</b> 7:53 PM <b>UV Index:</b> 3 (Moderate) <b>Relative Humidity:</b> 84% <b>Precipitation:</b> 30% <b>Snow Probability:</b> 0% <b>Cloud Coverage:</b> 66% <b>Moon Phase:</b> Waxing Crescent <b>Wind Speed:</b> 9Mph (15Km, 8Kts) <b>Wind Direction:</b> :56° (SSE)
<b>Sunday, February 02</b>  Ran/ Thunder	<b>66°</b> <b>44°</b>	<b>Day:</b> Rain with a few rumbles of thunder. Highs in the mid 60s and lows in the mid 40s.	<b>Rise:</b> 6:47 AM <b>Set:</b> 5:32 PM <b>Moon Rise:</b> 8:30 AM <b>Moon Set:</b> 8:59 PM <b>UV Index:</b> 2 (Low) <b>Relative Humidity:</b> 96% <b>Precipitation:</b> 90% <b>Snow Probability:</b> 18% <b>Cloud Coverage:</b> 88% <b>Moon Phase:</b> Waxing Crescent <b>Wind Speed:</b> 7Mph (12Km, 6Kts) <b>Wind Direction:</b> :54° (SSE)
<b>Monday, February 03</b>  Cloudy	<b>57°</b> <b>50°</b>	<b>Day:</b> Mostly Cloudy. Highs in the upper 50s and lows in the low 50s.	<b>Rise:</b> 6:47 AM <b>Set:</b> 5:33 PM <b>Moon Rise:</b> 9:09 AM <b>Moon Set:</b> 10:01 PM <b>UV Index:</b> 2 (Low) <b>Relative Humidity:</b> 78% <b>Precipitation:</b> 10% <b>Snow Probability:</b> 1% <b>Cloud Coverage:</b> 89% <b>Moon Phase:</b> Waxing Crescent <b>Wind Speed:</b> 7Mph (12Km, 6Kts) <b>Wind Direction:</b> 21° (NNE)
<b>Tuesday, February 04</b>  Scattered Thunderstorms	<b>70°</b> <b>56°</b>	<b>Day:</b> Scattered thunderstorms possible. Highs in the low 70s and lows in the mid 50s.	<b>Rise:</b> 6:46 AM <b>Set:</b> 5:33 PM <b>Moon Rise:</b> 9:48 AM <b>Moon Set:</b> 11:02 PM <b>UV Index:</b> 3 (Moderate) <b>Relative Humidity:</b> 55% <b>Precipitation:</b> 80% <b>Snow Probability:</b> 4% <b>Cloud Coverage:</b> 87% <b>Moon Phase:</b> Waxing Crescent <b>Wind Speed:</b> 12Mph (20Km, 10Kts) <b>Wind Direction:</b> :65° (SSE)

February 1, 2014 @ 0800 hours to 2000 hours




# Organization Assignment 203

## CURRENT ORGANIZATION



February 1, 2014 @ 0800 hours to 2000 hours



<b>1. Incident Name:</b>		<b>2. Operational Period: (Date/Time)</b>		<b>ASSIGNMENT LIST ICS 204</b>	
New Augusta Derailment		From: 01FEB2014 / 0800 To: 01FEB2014/ 2000			
<b>3. Branch:</b>		<b>4. Division/Group/Staging:</b>			
		Transfer Group			
<b>5. Operations Personnel:</b>					
<b>ICS Position</b>	<b>Name</b>	<b>Company/Agency</b>	<b>Contact #(s)</b>		
Operations Section Chief:	Ronnie Strong	CN	601-317-4614		
Branch Director:					
Division Group Supervisor:	Anthony Ippalito	CN	708-728-5774		
<b>6. Resource Assigned: additional instructions</b> "x" indicates 204 <sup>a</sup> attachment with					
<b>Strike Team/Task Force/ Resource Identifier</b>	<b>Leader</b>	<b>Contact Info #</b>	<b># of Persons</b>	<b>Reporting Info/ Notes/Remarks</b>	
USES	Don Warren/Glenn Thompson		30		
Hulcher	Randy Pinksten		30		
<b>7. Work Assignments:</b>					
<p><u>USES</u>: Start and continue transfer of methanol (NATX 3701242)</p> <p><u>Hulcher</u>: Steam multiple crude oil cars to ready for transfer in the morning; continue transfer of urea car; begin clean and purge of urea cars.</p>					
<b>8. Special Instructions:</b>					
Fire protection will be conducted during methanol transfer. Air monitoring will be conducted during all transfers and steaming operations.					
<b>9. Communications (radio and/or phone contact numbers needed for this assignment):</b>					
<b>Name/Function</b>	<b>Radio: Freq./System/Channel</b>	<b>Phone</b>	<b>Cell/Pager</b>		
<b>Emergency Communications:</b>					
<b>10. Prepared by: (RESL) (Date/Time)</b>		<b>11. Prepared by: (PSC) (Date/Time)</b>		<b>12. Prepared by: (OPS) (Date/Time)</b>	
<b>ASSIGNMENT LIST</b>				<b>ICS 204</b>	

<b>2. Incident Name:</b>		<b>2. Operational Period: (Date/Time)</b>		<b>ASSIGNMENT LIST ICS 204</b>	
New Augusta Derailment		From: 01FEB2014 / 0800 To: 01FEB2014/ 2000			
<b>3. Branch:</b>		<b>4. Division/Group/Staging:</b>			
		Environmental Group			
<b>5. Operations Personnel:</b>					
<b>ICS Position</b>	<b>Name</b>	<b>Company/Agency</b>	<b>Contact #(s)</b>		
Operations Section Chief:	Ronnie Strong	CN	601-317-4614		
Branch Director:					
Division Group Supervisor:	Troy S. Bernal Bob Strong	CRA CN	225-907-4606 601-317-4614		
<b>6. Resource Assigned: additional instructions</b> "x" indicates 204 <sup>a</sup> attachment with					
<b>Strike Team/Task Force/ Resource Identifier</b>	<b>Leader</b>	<b>Contact Info #</b>	<b># of Persons</b>	<b>Reporting Info/ Notes/Remarks</b>	
B&P	Spinner Vaughn		30		
CRA	Nathan Judice		30		
<b>7. Work Assignments:</b>					
<p><u>B&amp;P</u>: Maintain dike around impact areas, maintain covers on railcars; maintain drainage of storm water, if needed</p> <p><u>CRA</u>: Continue air monitoring the perimeter and work zone; continue visual inspections on the surface water and drainage features</p>					
<b>8. Special Instructions:</b>					
<b>9. Communications (radio and/or phone contact numbers needed for this assignment):</b>					
<b>Name/Function</b>	<b>Radio: Freq./System/Channel</b>	<b>Phone</b>	<b>Cell/Pager</b>		
<b>Emergency Communications:</b>					
<b>10. Prepared by: (RESL) (Date/Time)</b>	<b>11. Prepared by: (PSC) (Date/Time)</b>	<b>12. Prepared by: (OPS) (Date/Time)</b>			
<b>ASSIGNMENT LIST</b>					<b>ICS 204</b>

<b>3. Incident Name:</b>		<b>2. Operational Period: (Date/Time)</b>		<b>ASSIGNMENT LIST ICS 204</b>	
New Augusta Derailment		From: 01FEB2014 / 2000 To: 01FEB2014/ 0800			
<b>3. Branch:</b>		<b>4. Division/Group/Staging:</b>			
		Engineering Group			
<b>5. Operations Personnel:</b>					
<b>ICS Position</b>	<b>Name</b>	<b>Company/Agency</b>	<b>Contact #(s)</b>		
Operations Section Chief:	Ronnie Strong	CN	601-317-4614		
Branch Director:					
Division Group Supervisor:	Chad Anderson	CN	708-332-3125		
<b>6. Resource Assigned: additional instructions</b> "x" indicates 204 <sup>a</sup> attachment with					
<b>Strike Team/Task Force/Resource Identifier</b>	<b>Leader</b>	<b>Contact Info #</b>	<b># of Persons</b>	<b>Reporting Info/Notes/Remarks</b>	
CN	Dillon Onda		28		↓
<b>7. Work Assignments:</b>					
CN: Track will be inspected periodically; 25 mph limit unless inspected less than two hours prior to entry					
<b>8. Special Instructions:</b>					
Robert Downing has track protection for MP 78.4 to 69.1; Track may be open during the operational period. There will be track protection.					
<b>9. Communications (radio and/or phone contact numbers needed for this assignment):</b>					
<b>Name/Function</b>	<b>Radio: Freq./System/Channel</b>	<b>Phone</b>	<b>Cell/Pager</b>		
<b>Emergency Communications:</b>					
<b>10. Prepared by: (RESL) (Date/Time)</b>	<b>11. Prepared by: (PSC) (Date/Time)</b>	<b>12. Prepared by: (OPS) (Date/Time)</b>			
<b>ASSIGNMENT LIST</b>					<b>ICS 204</b>

<b>4. Incident Name:</b>		<b>2. Operational Period: (Date/Time)</b>		<b>ASSIGNMENT LIST ICS 204</b>	
<b>New Augusta Derailment</b>		From: 01FEB2014 / 0800 To: 01FEB2014/ 2000			
<b>3. Branch:</b>		<b>4. Division/Group/Staging:</b>			
		<b>Police Group</b>			
<b>5. Operations Personnel:</b>					
<b>ICS Position</b>	<b>Name</b>	<b>Company/Agency</b>	<b>Contact #(s)</b>		
<b>Operations Section Chief:</b>	<b>Ronnie Strong</b>	<b>CN</b>	<b>601-317-4614</b>		
<b>Branch Director:</b>					
<b>Division Group Supervisor:</b>	<b>Monica Carson</b>	<b>CN</b>	<b>601-317-4614</b>		
<b>6. Resource Assigned: additional instructions</b> "x" indicates 204 <sup>a</sup> attachment with					
<b>Strike Team/Task Force/ Resource Identifier</b>	<b>Leader</b>	<b>Contact Info #</b>	<b># of Persons</b>	<b>Reporting Info/ Notes/Remarks</b>	
<b>CN Security</b>	<b>Monica Carson</b>		<b>2</b>		
<b>7. Work Assignments:</b>					
Provide security at entry to work area using sign in/out record					
<b>8. Special Instructions:</b>					
<b>9. Communications (radio and/or phone contact numbers needed for this assignment):</b>					
<b>Name/Function</b>	<b>Radio: Freq./System/Channel</b>	<b>Phone</b>	<b>Cell/Pager</b>		
<b>Emergency Communications:</b>					
<b>10. Prepared by: (RESL) (Date/Time)</b>	<b>11. Prepared by: (PSC) (Date/Time)</b>	<b>12. Prepared by: (OPS) (Date/Time)</b>			
<b>ASSIGNMENT LIST</b>					<b>ICS 204</b>





**CONESTOGA-ROVERS  
& ASSOCIATES**

Prepared for:

**CN**

# Communications Plan ICS 205

CN - Will Noland	Cell: 248-431-7089 e-mail: William.noland@cn.ca
CRA - Troy S. Bernal	Cell: 225-907-4606 e-mail: <a href="mailto:tbernal@craworld.com">tbernal@craworld.com</a>
EPA - Leo Francendese	Cell: 404-606-2223 e-mail: <a href="mailto:francendese.leo@epa.gov">francendese.leo@epa.gov</a>
MDEQ - Ernie Shirley	Cell: 601-946-9474 e-mail: ernie.shirley@deq.state.ms.us
Perry County EMA -Russell Dale Carnahan	Cell: 601-964-0602
USES - Don Warren	Cell: 601-278-7814 e-mail:
B&P - Kendall Puritt	Cell: 601-785-4433 e-mail:
RJ Corman - Sam White	Cell: 859-296-3939 e-mail:
Hulcher - Randy Pinkston	Cell: 618-789-7448 e-mail:
CN PIO - Patrick Waldron	708-990-5771
MEMA PIO – Brett Carr	601-933-6653
<b>SAFETY OFFICER - USES – Mike Gettinger</b>	<b>601-278-7835</b>
February 1, 2014 @ 0800 hours to 2000 hours	



**CONESTOGA-ROVERS  
& ASSOCIATES**



Prepared for:

**CN**

# Medical Plan 206-1A

## Medical Plan

### Emergency Information

Contact	Phone Number
Local Police	(601) 964-8101 or 911
Fire Department	(601) 964-9933 or 911
Ambulance	911
<b>Primary Local Hospital:</b> Forrest General Hospital Address: 6051 US Highway 49 Hattiesburg, Mississippi 39401 (Reference attached map for directions)	(601) 288-7000
<b>Local Hospital (2<sup>nd</sup> Option):</b> Greene County Hospital Address: 1017 Jackson Ave. Leakesville, Mississippi 39451 (Reference attached map for directions)	(601) 394-4135
National Poison Center	800-222-1222
<b>Primary Local Hospital:</b> Forrest General Hospital  <b>1. Head west on US-98 W</b> 13.3 mi  <b>2. Take the ramp to Hattiesburg</b> 0.4 mi  <b>3. Merge onto US 49 N</b> 5.9 mi  <b>4. Turn left onto Mamie St</b> 367 ft   6051 U.S. 49, Hattiesburg, MS 39401	<b>Local Hospital (2<sup>nd</sup> Option):</b> Greene County Hospital  <b>1. Head south on Turner Loop toward US-98 E</b> 148 ft  <b>2. Turn left onto US-98 E</b> 18.4 mi  <b>3. Turn left onto MS-57 N</b> 14.0 mi  <b>4. Turn right onto Lackey St</b> Destination will be on the right 0.2 mi   1017 Jackson Ave Leakesville, MS 39451



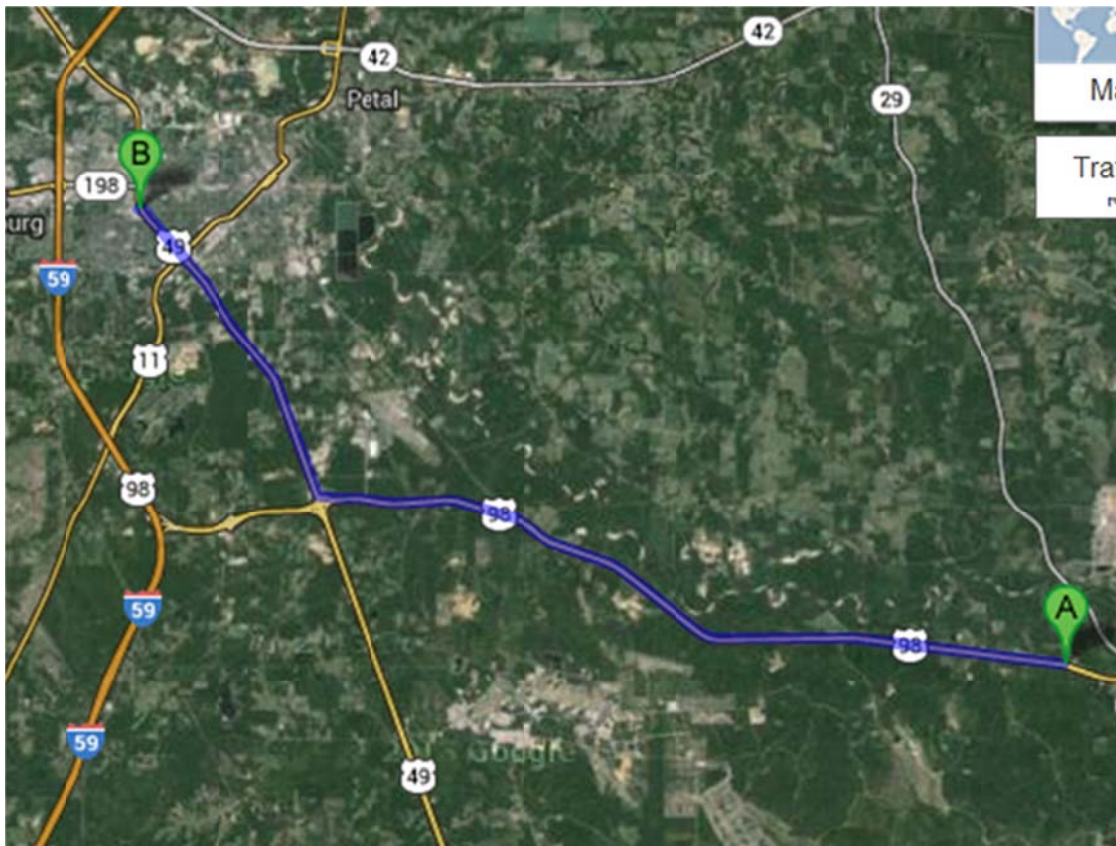
**CONESTOGA-ROVERS  
& ASSOCIATES**

Prepared for:  
**CN**

## Medical Plan 206-1B

### Medical Plan

Primary Local Hospital: Forrest General Hospital Map



**CONESTOGA-ROVERS  
& ASSOCIATES**

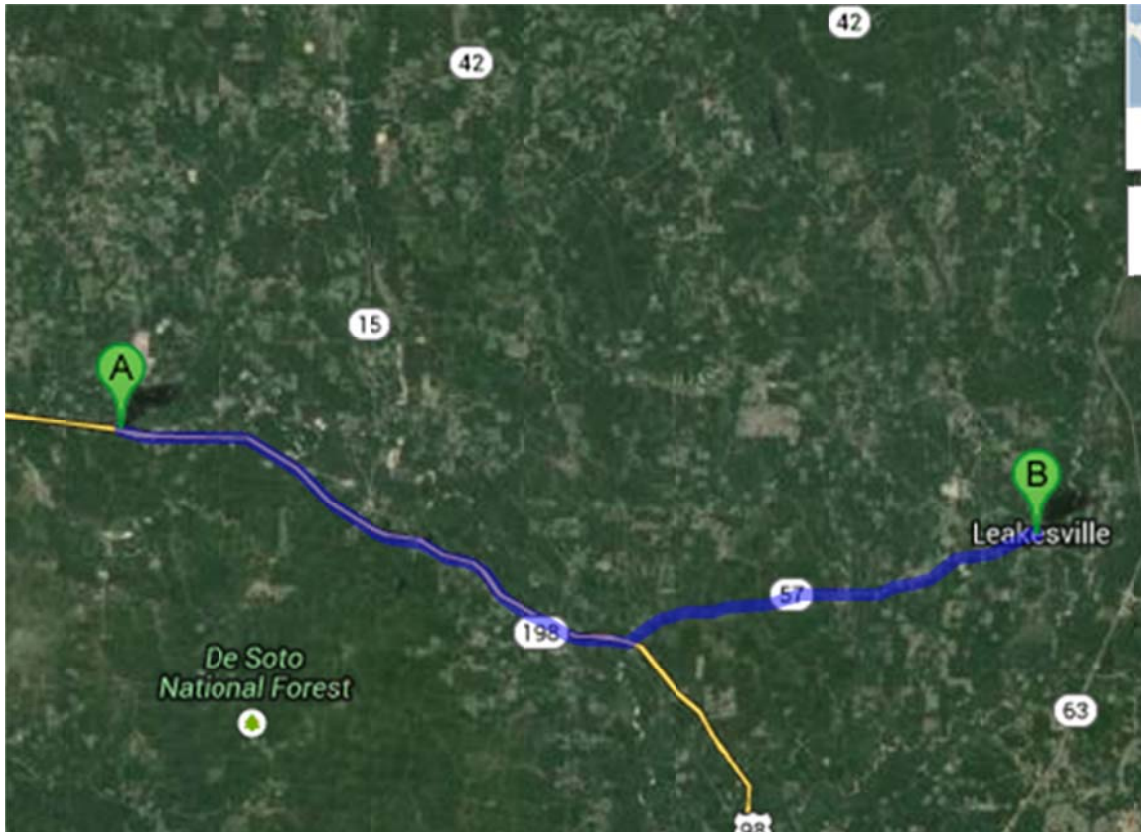
## Medical Plan

Prepared for:  
**CN**

**206-1C**

**Medical Plan**

Local Hospital (2<sup>nd</sup> Option): Greene County Hospital







**CONESTOGA-ROVERS  
& ASSOCIATES**

Prepared for:

**CN**

## **SITE SAFETY MESSAGE**

- **PPE: FRC, safety boots, safety glasses, hard hat, hearing protection, safety vests**
- **Watch footing, tie-off ladders, 3-Point Contact**
- **Watch out for slips, trips and falls**
- **Use proper lifting techniques, get help or use lifting equipment**
- **Keep Hydrated**
- **Follow adequate work/rest schedule**
- **Use intrinsically safe equipment in flammable/hazardous environments**
- **Alert response personnel of air monitoring readings above action levels for LEL and/or VOCs**