



Weston Solutions, Inc.
Suite 201
1090 King Georges Post Road
Edison, New Jersey 08837-3703
732-585-4400 • Fax 732-225-7037
www.westonsolutions.com

REMOVAL SUPPORT TEAM 2
EPA CONTRACT EP-W-06-072

August 18, 2008

Joseph Cosentino, On-Scene Coordinator
U.S. Environmental Protection Agency
Removal Action Branch
2890 Woodbridge Avenue
Edison, NJ 08837

EPA CONTRACT NO: EP-W-06-072
TDD NO: TO-0009-0014
DOCUMENT CONTROL NO: RST 2-02-F-0625
SUBJECT: SAMPLING TRIP REPORT – Readburn Wood Tar Site Assessment

Dear Mr. Cosentino:

Enclosed please find the Sampling Trip Report for the sampling event conducted at the Readburn Wood Tar Site located in Hancock, Delaware County, New York, from July 28 -30, 2008. If you have any questions, please do not hesitate to call me at (732) 585-4449, or on my cellular telephone at (908) 565-2974.

Sincerely,

Weston Solutions, Inc.

Kristen Sharp
Site Project Manager

Enclosure

cc: TDD File No. TO-0009-0014



SAMPLING TRIP REPORT

SITE NAME: Readburn Wood Tar
DCN #: RST2-02-F-0625
TDD#: TO-0009-0014

SAMPLE DATE: July 28 – July 30, 2008

1. **Site Location:** 2222 Readburn Road
Hancock, Delaware County, New York
Refer to Figure 1, Attachment A.
2. **Sample Locations and Descriptions:** Refer to Figure 2, Attachment A and Table 1, Attachment B.

3. **Laboratory Receiving Samples:**

<u>Sample Type/Analysis</u>	<u>Name and Address of Laboratory</u>
Soil Samples/ TCL-VOCs, SVOCs, TAL Metals	USEPA DESA Laboratory 2890 Woodbridge Avenue Edison, NJ 08837

4. **Sample Dispatch Data:**

On July 28, 2008, RST 2 personnel relinquished 16 soil samples for Target Compound List (TCL) Volatile Organic Compound (VOCs) analysis to the USEPA Division of Environmental Science and Assessment (DESA) Laboratory. On July 29, 2008, RST 2 personnel relinquished 31 soil samples for Volatile Organic Compound analysis and 47 samples for Semi-Volatile Organic Compound (SVOCs) and TAL Metals analysis to the USEPA DESA Laboratory. Additional volume for matrix spike / matrix spike duplicate (MS/MSD) analysis was collected with samples RWT-SS-22-05, RWT-SS-21-05, and RWT-SS-21-05. Duplicate samples were collected at sample locations RWT-SS-17-10, RWT-SS-17-15, and RWT-SS-21-15. These samples were named RWT-SS-17A-10, RWT-SS-17A-15, and RWT-SS-21A-15 respectively. The Fed Ex airbill number for the collected samples was 864048331840.

On July 31, 2008, RST 2 personnel relinquished 38 soil samples for Volatile Organic Compound, Semi-Volatile Organic Compound, and TAL Metals analysis to the USEPA DESA Laboratory. Additional volume for MS/MSD analysis was collected with samples RWT-SS-11-15, RWT-SS-06-05, and RWT-SS-07-15. Duplicate samples were collected at sample locations RWT-SS-02-15, and RWT-SS-01-15. These samples were named RWT-SS-02A-15 and RWT-SS-01A-15 respectively. The Fed Ex airbill numbers for the collected samples were

864048331829 and 864048331830. Refer to Attachment C for Chain of Custody Records and FedEx Airbills.

Laboratory	Date Shipped	Fed Ex Airbill Number	Traffic Report Number
USEPA DESA	July 28, 2008	864048331840	1200-07/28/08-0001
USEPA DESA	July 29, 2008	864048331829	1200-07/29/08-0002
USEPA DESA	July 29, 2008	864048331830	1200-07/29/08-0003
USEPA DESA	July 30, 2008	N/A	1200-07/30/08-0004

5. On-Site Personnel:

<u>Name</u>	<u>Representing</u>	<u>Duties on Site</u>
Joseph Cosentino	EPA	OSC
Kristen Sharp	Region II RST 2	Site Project Manager, Site Health and Safety, Site QA/QC, Sample Collection and Management
Sandra Richards	Region II RST 2	Sample Collection and Management
Joel Siegel	Region II RST 2	Sample Collection and Management
Jeffery Snyder	Zebra Environmental	Geoprobe® Operator

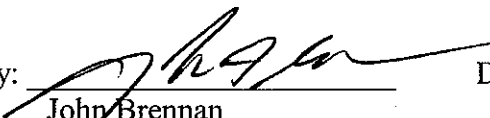
6. Investigation Review:

On July 24, 2008, Naeva Geophysics, Inc., conducted a utility mark-out of the property. Each sample location was surveyed for underground utilities and a five foot buffer zone around each proposed location area was established. Two samples, RWT-SS-13 and RWT-SS-15, were moved to different locations based on findings from the survey. Drilling operations and soil sampling was initiated on July 28, 2008. Weston Solutions subcontracted Zebra Environmental Inc., to obtain the sample borings by using a Geoprobe® Model 7720 DT track rig with a five foot macroprobe in dedicated acetate sleeves. Samples collected for TCL-VOCs analysis were taken first directly from the boring using an Encore® sampler. Rocks and other debris were removed prior to placing a sample into a dedicated sample jar. All other samples were homogenized using dedicated aluminum pans before the sample was placed into a dedicated sample container with a dedicated plastic scoop. Sample names were based on the site name, media type, boring hole number, and depth sequence. Refer to Attachment D for

photographic documentation. As each core was recovered, the borehole and the soil was monitored for organic vapors with a calibrated Multi-RAE Plus before the sample was classified based on soil properties and placed in sample containers. Refer to Attachment E for the Soil Boring Logs.

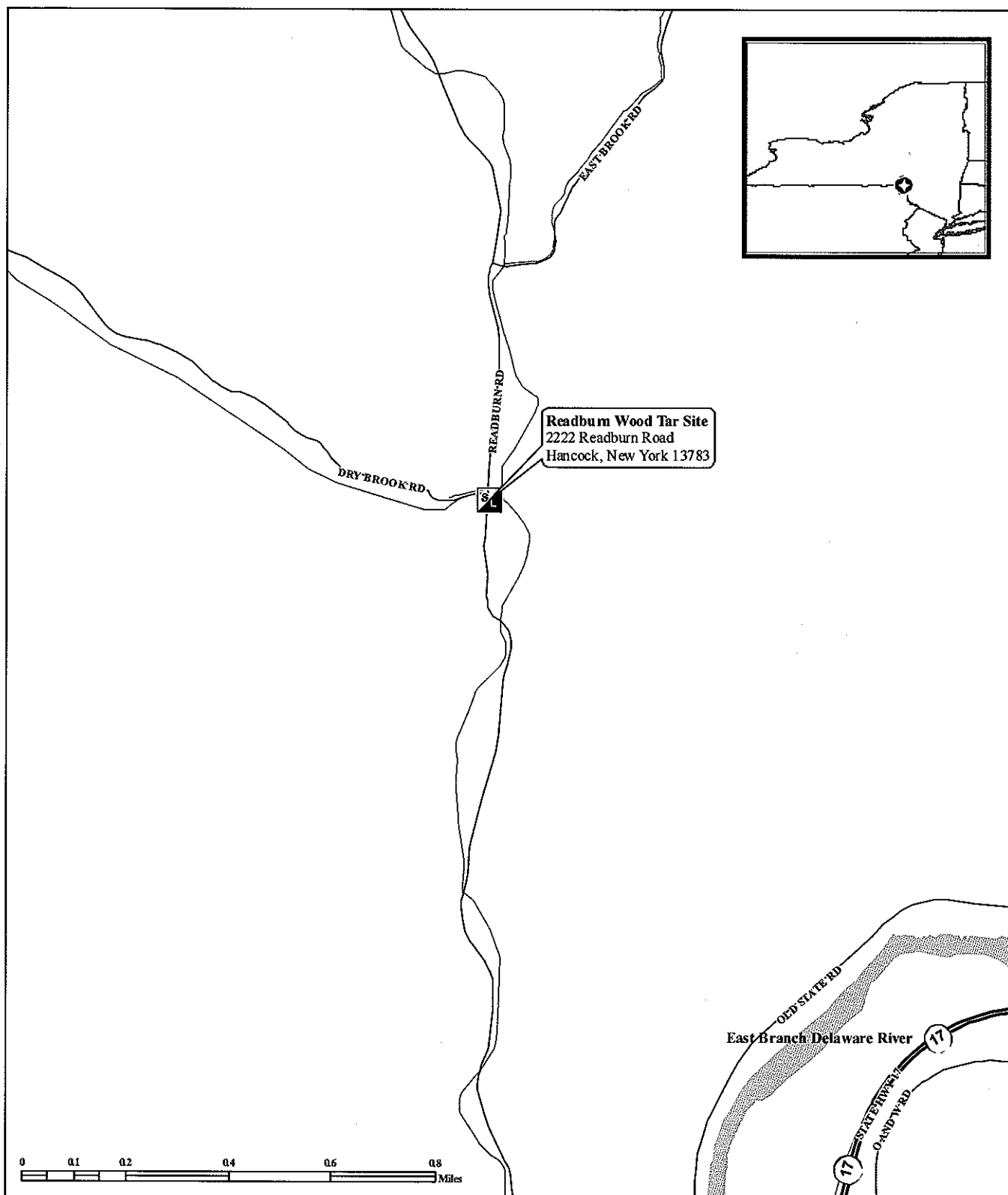
During the preparation of the trip report an error was found in Chain of Custody 1200-07/29/08-0003. A new COC was printed out and sent to Adly Michaels of EPA.

7. Report prepared by: _____ Date: _____
Kristen Sharp
RST 2 Site Project Manager

Report reviewed by:  Date: 8/19/08
John Brennan
RST 2 Group Leader

ATTACHMENT A

Figure 1: Site Location Map
Figure 2: Sample Location Map



Legend



Site Location



Weston Solutions, Inc.

In Association With
Innovative Technical Solutions, Inc.,
Scientific and Environmental Associates, Inc.
and Avatar Environmental, LLC.

Figure 1: Site Location Map

READBURN WOOD TAR SITE
HANCOCK, NEW YORK

U.S. ENVIRONMENTAL PROTECTION AGENCY
REMOVAL SUPPORT TEAM 2
CONTRACT # EP-W-06-072

DATE MODIFIED: 04/15/03
GIS ANALYST: F CAMPBELL
EPA OSC: J COSENTINO
EST SPM: K SHARP
FILENAME: SITEMAP.MXD

ATTACHMENT B

Sample Collection Information

Readburn Wood Tar Site

Table 1: Soil Sample

Collection Information

July 28-30, 2008

RST 2 Sample ID	Analysis	Sample Date	Sample Time	QA/QC
RWT-SS-15-04	TCL VOCs	7/28/2008	11:32	N/A
	TCL SVOCs			
	TAL Metals			
RWT-SS-15-08	TCL VOCs	7/28/2008	11:43	N/A
	TCL SVOCs			
	TAL Metals			
RWT-SS-15-12	TCL VOCs	7/28/2008	11:50	N/A
	TCL SVOCs			
	TAL Metals			
RWT-SS-15-16	TCL VOCs	7/28/2008	11:57	N/A
	TCL SVOCs			
	TAL Metals			
RWT-SS-13-05	TCL VOCs	7/28/2008	12:10	N/A
	TCL SVOCs			
	TAL Metals			
RWT-SS-13-10	TCL VOCs	7/28/2008	12:18	N/A
	TCL SVOCs			
	TAL Metals			
RWT-SS-13-15	TCL VOCs	7/28/2008	12:28	N/A
	TCL SVOCs			
	TAL Metals			
RWT-SS-16-05	TCL VOCs	7/28/2008	12:36	N/A
	TCL SVOCs			
	TAL Metals			
RWT-SS-16-10	TCL VOCs	7/28/2008	12:45	N/A
	TCL SVOCs			
	TAL Metals			
RWT-SS-16-15	TCL VOCs	7/28/2008	12:56	N/A
	TCL SVOCs			
	TAL Metals			
RWT-SS-19-05	TCL VOCs	7/28/2008	13:09	N/A
	TCL SVOCs			
	TAL Metals			
RWT-SS-19-10	TCL VOCs	7/28/2008	13:17	N/A
	TCL SVOCs			
	TAL Metals			
RWT-SS-19-15	TCL VOCs	7/28/2008	13:30	N/A
	TCL SVOCs			
	TAL Metals			

* MS/MSD only submitted for TAL Metals analysis

Readburn Wood Tar Site
Table 1: Soil Sample
Collection Information
July 28-30, 2008

RST 2 Sample ID	Analysis	Sample Date	Sample Time	QA/QC
RWT-SS-25-05	TCL VOCs	7/28/2008	13:38	N/A
	TCL SVOCs			
	TAL Metals			
RWT-SS-25-10	TCL VOCs	7/28/2008	13:51	N/A
	TCL SVOCs			
	TAL Metals			
RWT-SS-25-15	TCL VOCs	7/28/2008	14:33	N/A
	TCL SVOCs			
	TAL Metals			
RWT-SS-24-05	TCL VOCs	7/29/2008	7:33	N/A
	TCL SVOCs			
	TAL Metals			
RWT-SS-24-10	TCL VOCs	7/29/2008	7:42	N/A
	TCL SVOCs			
	TAL Metals			
RWT-SS-24-15	TCL VOCs	7/29/2008	7:51	N/A
	TCL SVOCs			
	TAL Metals			
RWT-SS-17-05	TCL VOCs	7/29/2008	8:07	N/A
	TCL SVOCs			
	TAL Metals			
RWT-SS-17-10	TCL VOCs	7/29/2008	8:26	N/A
	TCL SVOCs			
	TAL Metals			
RWT-SS-17-15	TCL VOCs	7/29/2008	8:35	N/A
	TCL SVOCs			
	TAL Metals			
RWT-SS-17A-10	TCL VOCs	7/29/2008	8:56	Duplicate of RWT-SS-17-10
	TCL SVOCs			
	TAL Metals			
RWT-SS-17A-15	TCL VOCs	7/29/2008	8:58	Duplicate of RWT-SS-17-15
	TCL SVOCs			
	TAL Metals			
RWT-SS-18-05	TCL VOCs	7/29/2008	9:06	N/A
	TCL SVOCs			
	TAL Metals			
RWT-SS-18-10	TCL VOCs	7/29/2008	9:27	N/A
	TCL SVOCs			
	TAL Metals			

* MS/MSD only submitted for TAL Metals analysis

Readburn Wood Tar Site
Table 1: Soil Sample
Collection Information
July 28-30, 2008

RST 2 Sample ID	Analysis	Sample Date	Sample Time	QA/QC
RWT-SS-18-15	TCL VOCs	7/29/2008	9:37	N/A
	TCL SVOCs			
	TAL Metals			
RWT-SS-22-05	TCL VOCs	7/29/2008	9:58	*MS/MSD
	TCL SVOCs			
	TAL Metals			
RWT-SS-22-15	TCL VOCs	7/29/2008	10:05	N/A
	TCL SVOCs			
	TAL Metals			
RWT-SS-14-05	TCL VOCs	7/29/2008	10:18	N/A
	TCL SVOCs			
	TAL Metals			
RWT-SS-14-10	TCL VOCs	7/29/2008	10:28	N/A
	TCL SVOCs			
	TAL Metals			
RWT-SS-14-15	TCL VOCs	7/29/2008	10:45	N/A
	TCL SVOCs			
	TAL Metals			
RWT-SS-23-05	TCL VOCs	7/29/2008	11:35	N/A
	TCL SVOCs			
	TAL Metals			
RWT-SS-23-10	TCL VOCs	7/29/2008	11:47	N/A
	TCL SVOCs			
	TAL Metals			
RWT-SS-23-15	TCL VOCs	7/29/2008	11:56	N/A
	TCL SVOCs			
	TAL Metals			
RWT-SS-20-05	TCL VOCs	7/29/2008	12:10	N/A
	TCL SVOCs			
	TAL Metals			
RWT-SS-20-10	TCL VOCs	7/29/2008	12:20	N/A
	TCL SVOCs			
	TAL Metals			
RWT-SS-20-15	TCL VOCs	7/29/2008	12:30	N/A
	TCL SVOCs			
	TAL Metals			
RWT-SS-21-05	TCL VOCs	7/29/2008	13:20	*MS/MSD
	TCL SVOCs			
	TAL Metals			

* MS/MSD only submitted for TAL Metals analysis

Readburn Wood Tar Site
Table 1: Soil Sample
Collection Information
July 28-30, 2008

RST 2 Sample ID	Analysis	Sample Date	Sample Time	QA/QC
RWT-SS-21-10	TCL VOCs	7/29/2008	13:30	N/A
	TCL SVOCs			
	TAL Metals			
RWT-SS-21-15	TCL VOCs	7/29/2008	13:40	N/A
	TCL SVOCs			
	TAL Metals			
RWT-SS-21A-15	TCL VOCs	7/29/2008	13:50	Duplicate of RWT-SS-21-15
	TCL SVOCs			
	TAL Metals			
RWT-SS-26-05	TCL VOCs	7/29/2008	14:00	N/A
	TCL SVOCs			
	TAL Metals			
RWT-SS-26-10	TCL VOCs	7/29/2008	14:15	N/A
	TCL SVOCs			
	TAL Metals			
RWT-SS-26-15	TCL VOCs	7/29/2008	14:25	*MS/MSD
	TCL SVOCs			
	TAL Metals			
RWT-SS-12-05	TCL VOCs	7/29/2008	14:40	N/A
	TCL SVOCs			
	TAL Metals			
RWT-SS-12-10	TCL VOCs	7/29/2008	14:55	N/A
	TCL SVOCs			
	TAL Metals			
RWT-SS-11-05	TCL VOCs	7/30/2008	7:50	N/A
	TCL SVOCs			
	TAL Metals			
RWT-SS-11-10	TCL VOCs	7/30/2008	7:58	N/A
	TCL SVOCs			
	TAL Metals			
RWT-SS-11-15	TCL VOCs	7/30/2008	8:09	*MS/MSD
	TCL SVOCs			
	TAL Metals			
RWT-SS-09-05	TCL VOCs	7/30/2008	8:31	N/A
	TCL SVOCs			
	TAL Metals			
RWT-SS-09-10	TCL VOCs	7/30/2008	8:44	N/A
	TCL SVOCs			
	TAL Metals			

* MS/MSD only submitted for TAL Metals analysis

Readburn Wood Tar Site
Table 1: Soil Sample
Collection Information
July 28-30, 2008

RST 2 Sample ID	Analysis	Sample Date	Sample Time	QA/QC
RWT-SS-09-15	TCL VOCs	7/30/2008	8:55	N/A
	TCL SVOCs			
	TAL Metals			
RWT-SS-10-05	TCL VOCs	7/30/2008	9:15	N/A
	TCL SVOCs			
	TAL Metals			
RWT-SS-10-10	TCL VOCs	7/30/2008	9:25	N/A
	TCL SVOCs			
	TAL Metals			
RWT-SS-10-15	TCL VOCs	7/30/2008	9:31	N/A
	TCL SVOCs			
	TAL Metals			
RWT-SS-04-05	TCL VOCs	7/30/2008	9:50	N/A
	TCL SVOCs			
	TAL Metals			
RWT-SS-04-10	TCL VOCs	7/30/2008	9:58	N/A
	TCL SVOCs			
	TAL Metals			
RWT-SS-04-15	TCL VOCs	7/30/2008	10:08	N/A
	TCL SVOCs			
	TAL Metals			
RWT-SS-02-05	TCL VOCs	7/30/2008	10:18	N/A
	TCL SVOCs			
	TAL Metals			
RWT-SS-02-10	TCL VOCs	7/30/2008	10:20	N/A
	TCL SVOCs			
	TAL Metals			
RWT-SS-02-15	TCL VOCs	7/30/2008	10:32	N/A
	TCL SVOCs			
	TAL Metals			
RWT-SS-02A-15	TCL VOCs	7/30/2008	10:40	Duplicate of RWT-SS-02-15
	TCL SVOCs			
	TAL Metals			
RWT-SS-01-05	TCL VOCs	7/30/2008	10:50	N/A
	TCL SVOCs			
	TAL Metals			
RWT-SS-01-10	TCL VOCs	7/30/2008	11:03	N/A
	TCL SVOCs			
	TAL Metals			

* MS/MSD only submitted for TAL Metals analysis

Readburn Wood Tar Site
Table 1: Soil Sample
Collection Information
July 28-30, 2008

RST 2 Sample ID	Analysis	Sample Date	Sample Time	QA/QC
RWT-SS-01-15	TCL VOCs	7/30/2008	11:14	N/A
	TCL SVOCs			
	TAL Metals			
RWT-SS-01A-15	TCL VOCs	7/30/2008	11:20	Duplicate of RWT-SS-01-15
	TCL SVOCs			
	TAL Metals			
RWT-SS-08-05	TCL VOCs	7/30/2008	12:05	N/A
	TCL SVOCs			
	TAL Metals			
RWT-SS-08-10	TCL VOCs	7/30/2008	12:15	N/A
	TCL SVOCs			
	TAL Metals			
RWT-SS-08-15	TCL VOCs	7/30/2008	12:37	N/A
	TCL SVOCs			
	TAL Metals			
RWT-SS-06-05	TCL VOCs	7/30/2008	13:32	*MS/MSD
	TCL SVOCs			
	TAL Metals			
RWT-SS-06-10	TCL VOCs	7/30/2008	13:38	N/A
	TCL SVOCs			
	TAL Metals			
RWT-SS-06-15	TCL VOCs	7/30/2008	13:50	N/A
	TCL SVOCs			
	TAL Metals			
RWT-SS-07-05	TCL VOCs	7/30/2008	14:00	N/A
	TCL SVOCs			
	TAL Metals			
RWT-SS-07-10	TCL VOCs	7/30/2008	14:05	N/A
	TCL SVOCs			
	TAL Metals			
RWT-SS-07-15	TCL VOCs	7/30/2008	14:15	*MS/MSD
	TCL SVOCs			
	TAL Metals			
RWT-SS-05-05	TCL VOCs	7/30/2008	14:27	N/A
	TCL SVOCs			
	TAL Metals			

* MS/MSD only submitted for TAL Metals analysis

Readburn Wood Tar Site
Table 1: Soil Sample
Collection Information
July 28-30, 2008

RST 2 Sample ID	Analysis	Sample Date	Sample Time	QA/QC
RWT-SS-05-10	TCL VOCs	7/30/2008	14:37	N/A
	TCL SVOCs			
	TAL Metals			
RWT-SS-05-15	TCL VOCs	7/30/2008	14:50	N/A
	TCL SVOCs			
	TAL Metals			
RWT-SS-27-05	TCL VOCs	7/30/2008	15:11	N/A
	TCL SVOCs			
	TAL Metals			
RWT-SS-27-10	TCL VOCs	7/30/2008	15:30	N/A
	TCL SVOCs			
	TAL Metals			
RWT-SS-27-15	TCL VOCs	7/30/2008	15:41	N/A
	TCL SVOCs			
	TAL Metals			
RWT-SS-03-05	TCL VOCs	7/30/2008	15:51	N/A
	TCL SVOCs			
	TAL Metals			
RWT-SS-03-10	TCL VOCs	7/30/2008	16:00	N/A
	TCL SVOCs			
	TAL Metals			
RWT-SS-03-15	TCL VOCs	7/30/2008	16:10	N/A
	TCL SVOCs			
	TAL Metals			

* MS/MSD only submitted for TAL Metals analysis

ATTACHMENT C

**Chain of Custody Records and
FedEx Airbills**

Weston Solutions

1090 King Georges Post Rd
Edison NJ 08837
OSC Joeshp Cosentino

CHAIN OF CUSTODY RECORD

Site #: Readburn Wood Tar
Contact Name: Kristen Sharp
Contact Phone: 908 565 2974

No: 1200-07/28/08-0001

AlrbillNo: 864048331840

Lab: DESA

Lab Contact: John Birri

Lab #	Sample #	Analyses	Matrix	Collected	Sample Time	Numb Cont	Container	Preservative	MS/MSD
	RWT-SS-13-05	TCL VOCs (% moisture)	Soil	7/26/2008	1210	1	4 oz glass	4 C	
	RWT-SS-13-05	TCL VOCs	Soil	7/26/2008	1210	3	5 gram encore	4 C	
	RWT-SS-13-10	TCL VOCs (% moisture)	Soil	7/26/2008	1218	1	4 oz glass	4 C	
	RWT-SS-13-10	TCL VOCs	Soil	7/26/2008	1218	3	5 gram encore	4 C	
	RWT-SS-13-15	TCL VOCs (% moisture)	Soil	7/26/2008	1228	1	4 oz glass	4 C	
	RWT-SS-13-15	TCL VOCs	Soil	7/26/2008	1228	3	5 gram encore	4 C	
	RWT-SS-15-04	TCL VOCs (% moisture)	Soil	7/28/2008	1132	1	4 oz glass	4 C	
	RWT-SS-15-04	TCL VOCs	Soil	7/28/2008	1132	3	5 gram encore	4 C	
	RWT-SS-15-08	TCL VOCs (% moisture)	Soil	7/28/2008	1143	1	4 oz glass	4 C	
	RWT-SS-15-08	TCL VOCs	Soil	7/28/2008	1143	3	5 gram encore	4 C	
	RWT-SS-15-12	TCL VOCs (% moisture)	Soil	7/28/2008	1150	1	4 oz glass	4 C	
	RWT-SS-15-12	TCL VOCs	Soil	7/28/2008	1150	3	5 gram encore	4 C	
	RWT-SS-15-16	TCL VOCs (% moisture)	Soil	7/28/2008	1157	1	4 oz glass	4 C	
	RWT-SS-15-16	TCL VOCs	Soil	7/28/2008	1157	3	5 gram encore	4 C	
	RWT-SS-16-05	TCL VOCs (% moisture)	Soil	7/28/2008	1236	1	4 oz glass	4 C	
	RWT-SS-16-05	TCL VOCs	Soil	7/28/2008	1236	3	5 gram encore	4 C	
	RWT-SS-16-10	TCL VOCs (% moisture)	Soil	7/28/2008	1245	1	4 oz glass	4 C	
	RWT-SS-16-10	TCL VOCs	Soil	7/28/2008	1245	3	5 gram encore	4 C	
	RWT-SS-16-15	TCL VOCs (% moisture)	Soil	7/28/2008	1256	1	4 oz glass	4 C	

Special Instructions:

SAMPLES TRANSFERRED FROM

CHAIN OF CUSTODY #

[illegible]

Weston Solutions

1090 King Georges Post Rd
Edison NJ 08837
OSC Joesph Cosentino

CHAIN OF CUSTODY RECORD

Site #: Readburn Wood Tar
Contact Name: Kristen Sharp
Contact Phone: 908 565 2974

No: 1200-07/28/08-0001

AirbillNo: 864048331840
Lab: DESA
Lab Contact: John Birri

[illegible]

Special Instructions:

SAMPLES TRANSFERRED FROM

CHAIN OF CUSTODY #

[illegible]

Weston Solutions
1090 King Georges Post Rd
Edison NJ 08837
OSC Joseph Cosentino

CHAIN OF CUSTODY RECORD

Site #: Readburn Wood Tar
Contact Name: Kristen Sharp
Contact Phone: 9085652974

No: 1200-07/29/08-0002

Airbill No: 864048331829

Lab: DESA

Lab Contact: John Birri

Lab #	Sample #	Analyses	Matrix	Collected	Sample Time	Numb Cont	Container	Preservative	MS/MSD
	RWT-SS-12-05	TCL VOCs (% moisture)	Soil	7/29/2008	1440	1	4 oz glass	4 C	
	RWT-SS-12-05	TCL VOCs	Soil	7/29/2008	1440	3	5 gram encore	4 C	
	RWT-SS-12-10	TCL VOCs (% moisture)	Soil	7/29/2008	1455	1	4 oz glass	4 C	
	RWT-SS-12-10	TCL VOCs	Soil	7/29/2008	1455	3	5 gram encore	4 C	
	RWT-SS-14-05	TCL VOCs (% moisture)	Soil	7/29/2008	1018	1	4 oz glass	4 C	
	RWT-SS-14-05	TCL VOCs	Soil	7/29/2008	1018	3	5 gram encore	4 C	
	RWT-SS-14-10	TCL VOCs (% moisture)	Soil	7/29/2008	1028	1	4 oz glass	4 C	
	RWT-SS-14-10	TCL VOCs	Soil	7/29/2008	1028	3	5 gram encore	4 C	
	RWT-SS-14-15	TCL VOCs (% moisture)	Soil	7/29/2008	1045	1	4 oz glass	4 C	
	RWT-SS-14-15	TCL VOCs	Soil	7/29/2008	1045	3	5 gram encore	4 C	
	RWT-SS-17-05	TCL VOCs (% moisture)	Soil	7/29/2008	0807	1	4 oz glass	4 C	
	RWT-SS-17-05	TCL VOCs	Soil	7/29/2008	0807	3	5 gram encore	4 C	
	RWT-SS-17-10	TCL VOCs (% moisture)	Soil	7/29/2008	0826	1	4 oz glass	4 C	
	RWT-SS-17-10	TCL VOCs	Soil	7/29/2008	0826	3	5 gram encore	4 C	
	RWT-SS-17-15	TCL VOCs (% moisture)	Soil	7/29/2008	0835	1	4 oz glass	4 C	
	RWT-SS-17-15	TCL VOCs	Soil	7/29/2008	0835	3	5 gram encore	4 C	
	RWT-SS-17A-10	TCL VOCs (% moisture)	Soil	7/29/2008	0856	1	4 oz	4 C	
	RWT-SS-17A-10	TCL VOCs	Soil	7/29/2008	0856	3	5 gram encore	4 C	
	RWT-SS-17A-15	TCL VOCs (% moisture)	Soil	7/29/2008	0858	1	4 oz	4 C	

Special Instructions:

SAMPLES TRANSFERRED FROM
CHAIN OF CUSTODY #

Items/Reason	Relinquished by	Date	Received by	Date	Relinquished By	Items/Reason	Date	Time
ALL SAMPLES LAB ANALYSIS	<i>RP</i>	7/29/08	FedEx	7/29/08				1830

Weston Solutions

1090 King Georges Post Rd
Edison NJ 08837
OSC Joeshp Cosentino

CHAIN OF CUSTODY RECORD

Site #: Readburn Wood Tar
Contact Name: Kristen Sharp
Contact Phone: 9085652974

No: 1200-07/29/08-0002
AirbillNo: 864048331829
Lab: DESA
Lab Contact: John Birri

Lab #	Sample #	Analyses	Matrix	Collected	Sample Time	Numb Cont	Container	Preservative	MS/MSD
	RWT-SS-17A-15	TCL VOCs	Soil	7/29/2008	0858	3	5 gram encore	4 C	
	RWT-SS-18-05	TCL VOCs (% moisture)	Soil	7/29/2008	0906	1	4 oz glass	4 C	
	RWT-SS-18-05	TCL VOCs	Soil	7/29/2008	0906	3	5 gram encore	4 C	
	RWT-SS-18-10	TCL VOCs (% moisture)	Soil	7/29/2008	0927	1	4 oz glass	4 C	
	RWT-SS-18-10	TCL VOCs	Soil	7/29/2008	0927	3	5 gram encore	4 C	
	RWT-SS-18-15	TCL VOCs (% moisture)	Soil	7/29/2008	0937	1	4 oz glass	4 C	
	RWT-SS-18-15	TCL VOCs	Soil	7/29/2008	0937	3	5 gram encore	4 C	
	RWT-SS-20-05	TCL VOCs (% moisture)	Soil	7/29/2008	1210	1	4 oz glass	4 C	
	RWT-SS-20-05	TCL VOCs	Soil	7/29/2008	1210	3	5 gram encore	4 C	
	RWT-SS-20-10	TCL VOCs (% moisture)	Soil	7/29/2008	1220	1	4 oz glass	4 C	
	RWT-SS-20-10	TCL VOCs	Soil	7/29/2008	1220	3	5 gram encore	4 C	
	RWT-SS-20-15	TCL VOCs (% moisture)	Soil	7/29/2008	1230	1	4 oz glass	4 C	
	RWT-SS-20-15	TCL VOCs	Soil	7/29/2008	1230	3	5 gram encore	4 C	
	RWT-SS-21-05	TCL VOCs (% moisture)	Soil	7/29/2008	1320	1	4 oz glass	4 C	
	RWT-SS-21-05	TCL VOCs	Soil	7/29/2008	1320	3	5 gram encore	4 C	
	RWT-SS-21-10	TCL VOCs (% moisture)	Soil	7/29/2008	1330	1	4 oz glass	4 C	
	RWT-SS-21-10	TCL VOCs	Soil	7/29/2008	1330	3	5 gram encore	4 C	
	RWT-SS-21-15	TCL VOCs (% moisture)	Soil	7/29/2008	1340	1	4 oz glass	4 C	
	RWT-SS-21-15	TCL VOCs	Soil	7/29/2008	1340	3	5 gram encore	4 C	

Special Instructions:

**SAMPLES TRANSFERRED FROM
CHAIN OF CUSTODY #**

[illegible]

Weston Solutions

1090 King Georges Post Rd
Edison NJ 08837
OSC Joeshp Cosentino

CHAIN OF CUSTODY RECORD

Site #: Readburn Wood Tar
Contact Name: Kristen Sharp
Contact Phone: 9085652974

No: 1200-07/29/08-0002

AirbillNo: 864048331829

Lab: DESA

Lab Contact: John Birri

Lab #	Sample #	Analyses	Matrix	Collected	Sample Time	Numb Cont	Container	Preservative	MS/MSD
	RWT-SS-21A-15	TCL VOCs (% moisture)	Soil	7/29/2008	1350	1	4 oz glass	4 C	
	RWT-SS-21A-15	TCL VOCs	Soil	7/29/2008	1350	3	5 gram encore	4 C	
	RWT-SS-22-05	TCL VOCs (% moisture)	Soil	7/29/2008	0958	1	4 oz glass	4 C	
	RWT-SS-22-05	TCL VOCs	Soil	7/29/2008	0958	3	5 gram encore	4 C	
	RWT-SS-22-15	TCL VOCs (% moisture)	Soil	7/29/2008	1005	1	4 oz glass	4 C	
	RWT-SS-22-15	TCL VOCs	Soil	7/29/2008	1005	3	5 gram encore	4 C	
	RWT-SS-23-05	TCL VOCs (% moisture)	Soil	7/29/2008	1135	1	4 oz glass	4 C	
	RWT-SS-23-05	TCL VOCs	Soil	7/29/2008	1135	3	5 gram encore	4 C	
	RWT-SS-23-10	TCL VOCs (% moisture)	Soil	7/29/2008	1147	1	4 oz glass	4 C	
	RWT-SS-23-10	TCL VOCs	Soil	7/29/2008	1147	3	5 gram encore	4 C	
	RWT-SS-23-15	TCL VOCs	Soil	7/29/2008	1156	1	4 oz glass	4 C	
	RWT-SS-24-05	TCL VOCs (% moisture)	Soil	7/29/2008	0733	1	4 oz glass	4 C	
	RWT-SS-24-05	TCL VOCs	Soil	7/29/2008	0733	3	5 gram encore	4 C	
	RWT-SS-24-10	TCL VOCs (% moisture)	Soil	7/29/2008	0742	1	4 oz glass	4 C	
	RWT-SS-24-10	TCL VOCs	Soil	7/29/2008	0742	3	5 gram encore	4 C	
	RWT-SS-24-15	TCL VOCs (% moisture)	Soil	7/29/2008	0751	1	4 oz glass	4 C	
	RWT-SS-24-15	TCL VOCs	Soil	7/29/2008	0751	3	5 gram encore	4 C	
	RWT-SS-26-05	TCL VOCs (% moisture)	Soil	7/29/2008	1400	1	4 oz glass	4 C	

Special Instructions:

Special Instructions:	SAMPLES TRANSFERRED FROM
	CHAIN OF CUSTODY #

[illegible]

Weston Solutions

1090 King Georges Post Rd
Edison NJ 08837
OSC Joesh Cosentino

CHAIN OF CUSTODY RECORD

Site #: Readburn Wood Tar
Contact Name: Kristen Sharp
Contact Phone: 9085652974

No: 1200-07/29/08-0002

AirbillNo: 864048331829

Lab: DESA

Lab Contact: John Birri

[illegible]

Special Instructions:

[illegible][illegible]

Weston Solutions

1090 King Georges Post Rd
Edison NJ 08837
OSC Joeshp Cosentino

CHAIN OF CUSTODY RECORD

Site #: Readburn Wood Tar
Contact Name: Kristen Sharp
Contact Phone: 9085652974

No: 1200-07/29/08-0003

AirbillNo: 864048331830
Lab: DESA
Lab Contact: John Bitri

Lab #	Sample #	Analyses	Matrix	Collected	Sample Time	Numb Cont	Container	Preservative	MS/MSD
	RWT-SS-12-05	TCL SVOCs	Soil	7/29/2008	1440	1	8 oz glass	4 C	
	RWT-SS-12-05	TAL Metals + Hg	Soil	7/29/2008	1440	1	8 oz glass	4 C	
	RWT-SS-12-10	TCL SVOCs	Soil	7/29/2008	1455	1	8 oz glass	4 C	
	RWT-SS-12-10	TAL Metals + Hg	Soil	7/29/2008	1455	1	8 oz glass	4 C	
	RWT-SS-13-05	TCL SVOCs	Soil	7/28/2008	1210	1	8 oz glass	4 C	
	RWT-SS-13-05	TAL Metals + Hg	Soil	7/28/2008	1210	1	8 oz glass	4 C	
	RWT-SS-13-10	TCL SVOCs	Soil	7/28/2008	1218	1	8 oz glass	4 C	
	RWT-SS-13-10	TAL Metals + Hg	Soil	7/28/2008	1218	1	8 oz glass	4 C	
	RWT-SS-13-15	TCL SVOCs	Soil	7/28/2008	1228	1	8 oz glass	4 C	
	RWT-SS-13-15	TAL Metals + Hg	Soil	7/28/2008	1228	1	8 oz glass	4 C	
	RWT-SS-14-05	TCL SVOCs	Soil	7/29/2008	1018	1	8 oz glass	4 C	
	RWT-SS-14-05	TAL Metals + Hg	Soil	7/29/2008	1018	1	8 oz glass	4 C	
	RWT-SS-14-10	TCL SVOCs	Soil	7/29/2008	1028	1	8 oz glass	4 C	
	RWT-SS-14-10	TAL Metals + Hg	Soil	7/29/2008	1028	1	8 oz glass	4 C	
	RWT-SS-14-15	TCL SVOCs	Soil	7/29/2008	1045	1	8 oz glass	4 C	
	RWT-SS-14-15	TAL Metals + Hg	Soil	7/29/2008	1045	1	8 oz glass	4 C	
	RWT-SS-15-04	TCL SVOCs	Soil	7/28/2008	1132	1	8 oz glass	4 C	
	RWT-SS-15-04	TAL Metals + Hg	Soil	7/28/2008	1132	1	8 oz glass	4 C	
	RWT-SS-15-08	TCL SVOCs	Soil	7/28/2008	1143	1	8 oz glass	4 C	

Special Instructions:

SAMPLES TRANSFERRED FROM	CHAIN OF CUSTODY #

[illegible]

Weston Solutions

Weston Solutions
1090 King Georges Post Rd
Edison NJ 08837
OSC Joeshph Cosentino

CHAIN OF CUSTODY RECORD

Site #: Readburn Wood Tar
Contact Name: Kristen Sharp
Contact Phone: 9085652974

No: 1200-07/29/08-0003

Airbill#No: 864048331830
Lab: DESA
Lab Contact: John Birri

Lab #	Sample #	Analyses	Matrix	Collected	Sample Time	Numb Cont	Container	Preservative	MS/MSD
	RWT-SS-15-08	TAL Metals + Hg	Soil	7/28/2008	1143	1	8 oz glass	4 C	
	RWT-SS-15-12	TCL SVOCs	Soil	7/28/2008	1150	1	8 oz glass	4 C	
	RWT-SS-15-12	TAL Metals + Hg	Soil	7/28/2008	1150	1	8 oz glass	4 C	
	RWT-SS-15-16	TCL SVOCs	Soil	7/28/2008	1157	1	8 oz glass	4 C	
	RWT-SS-15-16	TAL Metals + Hg	Soil	7/28/2008	1157	1	8 oz glass	4 C	
	RWT-SS-16-05	TCL SVOCs	Soil	7/28/2008	1236	1	8 oz glass	4 C	
	RWT-SS-16-05	TAL Metals + Hg	Soil	7/28/2008	1236	1	8 oz glass	4 C	
	RWT-SS-16-10	TCL SVOCs	Soil	7/28/2008	1245	1	8 oz glass	4 C	
	RWT-SS-16-10	TAL Metals + Hg	Soil	7/28/2008	1245	1	8 oz glass	4 C	
	RWT-SS-16-15	TCL SVOCs	Soil	7/28/2008	1256	1	8 oz glass	4 C	
	RWT-SS-16-15	TAL Metals + Hg	Soil	7/28/2008	1256	1	8 oz glass	4 C	
	RWT-SS-17-05	TCL SVOCs	Soil	7/29/2008	0807	1	8 oz glass	4 C	
	RWT-SS-17-05	TAL Metals + Hg	Soil	7/29/2008	0807	1	8 oz glass	4 C	
	RWT-SS-17-10	TCL SVOCs	Soil	7/29/2008	0826	1	8 oz glass	4 C	
	RWT-SS-17-10	TAL Metals + Hg	Soil	7/29/2008	0826	1	8 oz glass	4 C	
	RWT-SS-17-15	TCL SVOCs	Soil	7/29/2008	0835	1	8 oz glass	4 C	
	RWT-SS-17-15	TAL Metals + Hg	Soil	7/29/2008	0835	1	8 oz glass	4 C	
	RWT-SS-17A-10	TCL SVOCs	Soil	7/29/2008	0856	1	8 oz glass	4 C	
	RWT-SS-17A-10	TAL Metals + Hg	Soil	7/29/2008	0856	1	8 oz glass	4 C	

SAMPLES TRANSFERRED FROM

CHAIN OF CUSTODY #

Special Instructions:

[illegible]

Weston Solutions

1090 King Georges Post Rd
Edison NJ 08837
OSC Joeph Cosentino

CHAIN OF CUSTODY RECORD

Site #: Readburn Wood Tar
Contact Name: Kristen Sharp
Contact Phone: 9085652974

No: 1200-07/29/08-0003

AirbillNo: 864048331830

Lab: DESA

Lab Contact: John Birri

Lab #	Sample #	Analyses	Matrix	Collected	Sample Time	Numb Cont	Container	Preservative	MS/MSD
	RWT-SS-17A-15	TCL SVOCs	Soil	7/29/2008	0858	1	8 oz glass	4 C	
	RWT-SS-17A-15	TAL Metals + Hg	Soil	7/29/2008	0858	1	8 oz glass	4 C	
	RWT-SS-18-05	TCL SVOCs	Soil	7/29/2008	0906	1	8 oz glass	4 C	
	RWT-SS-18-05	TAL Metals + Hg	Soil	7/29/2008	0906	1	8 oz glass	4 C	
	RWT-SS-18-10	TCL SVOCs	Soil	7/29/2008	0927	1	8 oz glass	4 C	
	RWT-SS-18-10	TAL Metals + Hg	Soil	7/29/2008	0927	1	8 oz glass	4 C	
	RWT-SS-18-15	TCL SVOCs	Soil	7/29/2008	0937	1	8 oz glass	4 C	
	RWT-SS-18-15	TAL Metals + Hg	Soil	7/29/2008	0937	1	8 oz glass	4 C	
	RWT-SS-19-05	TCL SVOCs	Soil	7/28/2008	1309	1	8 oz glass	4 C	
	RWT-SS-19-05	TAL Metals + Hg	Soil	7/28/2008	1309	1	8 oz glass	4 C	
	RWT-SS-19-10	TCL SVOCs	Soil	7/28/2008	1317	1	8 oz glass	4 C	
	RWT-SS-19-10	TAL Metals + Hg	Soil	7/28/2008	1317	1	8 oz glass	4 C	
	RWT-SS-19-15	TCL SVOCs	Soil	7/28/2008	1330	1	8 oz glass	4 C	
	RWT-SS-19-15	TAL Metals + Hg	Soil	7/28/2008	1330	1	8 oz glass	4 C	
	RWT-SS-20-05	TCL SVOCs	Soil	7/29/2008	1210	1	8 oz glass	4 C	
	RWT-SS-20-05	TAL Metals + Hg	Soil	7/29/2008	1210	1	8 oz glass	4 C	
	RWT-SS-20-10	TCL SVOCs	Soil	7/29/2008	1220	1	8 oz glass	4 C	
	RWT-SS-20-10	TAL Metals + Hg	Soil	7/29/2008	1220	1	8 oz glass	4 C	
	RWT-SS-20-15	TCL SVOCs	Soil	7/29/2008	1230	1	8 oz glass	4 C	

Special Instructions:

SAMPLES TRANSFERRED FROM

CHAIN OF CUSTODY #

Items/Reason	Relinquished by	Date	Received by	Date	Relinquished By	Items/Reason	Date	Time
ALAB'S SAMPLES LAB ANALYSIS	<i>JP</i>	7/29/08	FEDEX	7/29/08				1830

Weston Solutions

1090 King Georges Post Rd
Edison NJ 08837
OSC Joeshp Cosentino

CHAIN OF CUSTODY RECORD

Site #: Readburn Wood Tar
Contact Name: Kristen Sharp
Contact Phone: 9085652974

No: 1200-07/29/08-0003

AirbillNo: 864048331830

Lab: DESA

Lab Contact: John Birri

Lab #	Sample #	Analyses	Matrix	Collected	Sample Time	Numb Cont	Container	Preservative	MS/MSD
	RWT-SS-20-15	TAL Metals + Hg	Soil	7/29/2008	1230	1	8 oz glass	4 C	
	RWT-SS-21-05	TCL SVOCs	Soil	7/29/2008	1320	1	8 oz glass	4 C	
	RWT-SS-21-05	TAL Metals + Hg	Soil	7/29/2008	1320	2	8 oz glass	4 C	Y
	RWT-SS-21-10	TCL SVOCs	Soil	7/29/2008	1330	1	8 oz glass	4 C	
	RWT-SS-21-10	TAL Metals + Hg	Soil	7/29/2008	1330	1	8 oz glass	4 C	
	RWT-SS-21-15	TCL SVOCs	Soil	7/29/2008	1340	1	8 oz glass	4 C	
	RWT-SS-21-15	TAL Metals + Hg	Soil	7/29/2008	1340	1	8 oz glass	4 C	
	RWT-SS-21A-15	TCL SVOCs	Soil	7/29/2008	1350	1	8 oz glass	4 C	
	RWT-SS-21A-15	TAL Metals + Hg	Soil	7/29/2008	1350	1	8 oz glass	4 C	
	RWT-SS-22-05	TCL SVOCs	Soil	7/29/2008	0958	1	8 oz glass	4 C	
	RWT-SS-22-05	TAL Metals + Hg	Soil	7/29/2008	0958	2	8 oz glass	4 C	Y
	RWT-SS-22-15	TCL SVOCs	Soil	7/29/2008	1005	1	8 oz glass	4 C	
	RWT-SS-22-15	TAL Metals + Hg	Soil	7/29/2008	1005	1	8 oz glass	4 C	
	RWT-SS-23-05	TCL SVOCs	Soil	7/29/2008	1135	1	8 oz glass	4 C	
	RWT-SS-23-05	TAL Metals + Hg	Soil	7/29/2008	1135	1	8 oz glass	4 C	
	RWT-SS-23-10	TCL SVOCs	Soil	7/29/2008	1147	1	8 oz glass	4 C	
	RWT-SS-23-10	TAL Metals + Hg	Soil	7/29/2008	1147	1	8 oz glass	4 C	
	RWT-SS-23-15	TCL SVOCs	Soil	7/29/2008	1156	1	8 oz glass	4 C	
	RWT-SS-23-15	TAL Metals + Hg	Soil	7/29/2008	1156	1	8 oz glass	4 C	

Special Instructions:

SAMPLES TRANSFERRED FROM

CHAIN OF CUSTODY #

[illegible]

Weston Solutions

1090 King Georges Post Rd
Edison NJ 08837
OSC Joeshp Cosentino

CHAIN OF CUSTODY RECORD

Site #: Readburn Wood Tar
Contact Name: Kristen Sharp
Contact Phone: 9085652974

No: 1200-07/29/08-0003

AirbillNo: 864048331830

Lab: DESA

Lab Contact: John Birri

Lab #	Sample #	Analyses	Matrix	Collected	Sample Time	Numb Cont	Container	Preservative	MS/MSD
	RWT-SS-24-05	TCL SVOCs	Soil	7/29/2008	0733	1	8 oz glass	4 C	
	RWT-SS-24-05	TAL Metals + Hg	Soil	7/29/2008	0733	1	8 oz glass	4 C	
	RWT-SS-24-10	TCL SVOCs	Soil	7/29/2008	0742	1	8 oz glass	4 C	
	RWT-SS-24-10	TAL Metals + Hg	Soil	7/29/2008	0742	1	8 oz glass	4 C	
	RWT-SS-24-15	TCL SVOCs	Soil	7/29/2008	0751	1	8 oz glass	4 C	
	RWT-SS-24-15	TAL Metals + Hg	Soil	7/29/2008	0751	1	8 oz glass	4 C	
	RWT-SS-25-05	TCL SVOCs	Soil	7/28/2008	1338	1	8 oz glass	4 C	
	RWT-SS-25-05	TAL Metals + Hg	Soil	7/28/2008	1338	1	8 oz glass	4 C	
	RWT-SS-25-10	TCL SVOCs	Soil	7/28/2008	1351	1	8 oz glass	4 C	
	RWT-SS-25-10	TAL Metals + Hg	Soil	7/28/2008	1351	1	8 oz glass	4 C	
	RWT-SS-25-15	TCL SVOCs	Soil	7/28/2008	1433	1	8 oz glass	4 C	
	RWT-SS-25-15	TAL Metals + Hg	Soil	7/28/2008	1433	1	8 oz glass	4 C	
	RWT-SS-26-05	TCL SVOCs	Soil	7/29/2008	1400	1	8 oz glass	4 C	
	RWT-SS-26-05	TAL Metals + Hg	Soil	7/29/2008	1400	1	8 oz glass	4 C	
	RWT-SS-26-10	TCL SVOCs	Soil	7/29/2008	1415	1	8 oz glass	4 C	
	RWT-SS-26-10	TAL Metals + Hg	Soil	7/29/2008	1415	1	8 oz glass	4 C	
	RWT-SS-26-15	TCL SVOCs	Soil	7/29/2008	1425	1	8 oz glass	4 C	
	RWT-SS-26-15	TAL Metals + Hg	Soil	7/29/2008	1425	2	8 oz glass	4 C	Y

Special Instructions:

SAMPLES TRANSFERRED FROM

CHAIN OF CUSTODY #

[illegible]

Weston Solutions

1090 King Georges Post Rd
Edison NJ 08837
OSC Joesph Cosentino

CHAIN OF CUSTODY RECORD

Site #: Readburn Wood Tar
Contact Name: Kristen Sharp
Contact Phone: 9085652974

No: 1200-07/30/08-0004

AirbillNo: N/A
Lab: DESA
Lab Contact: John Birri

Lab #	Sample #	Analyses	Matrix	Collected	Sample Time	Numb Cont	Container	Preservative	MS/MSD
	RWT-SS-01-05	TCL VOCs (% moisture)	Soil	7/30/2008	1050	1	4 oz glass	4 C	
	RWT-SS-01-05	TCL VOCs	Soil	7/30/2008	1050	3	5 gram encore	4 C	
	RWT-SS-01-05	TCL SVOCs	Soil	7/30/2008	1050	1	8 oz glass	4 C	
	RWT-SS-01-05	TAL Metals + Hg	Soil	7/30/2008	1050	1	8 oz glass	4 C	
	RWT-SS-01-10	TCL VOCs (% moisture)	Soil	7/30/2008	1103	1	4 oz glass	4 C	
	RWT-SS-01-10	TCL VOCs	Soil	7/30/2008	1103	3	5 gram encore	4 C	
	RWT-SS-01-10	TCL SVOCs	Soil	7/30/2008	1103	1	8 oz glass	4 C	
	RWT-SS-01-10	TAL Metals + Hg	Soil	7/30/2008	1103	1	8 oz glass	4 C	
	RWT-SS-01-15	TCL VOCs (% moisture)	Soil	7/30/2008	1114	1	4 oz glass	4 C	
	RWT-SS-01-15	TCL VOCs	Soil	7/30/2008	1114	3	5 gram encore	4 C	
	RWT-SS-01-15	TCL SVOCs	Soil	7/30/2008	1114	1	8 oz glass	4 C	
	RWT-SS-01-15	TAL Metals + Hg	Soil	7/30/2008	1114	1	8 oz glass	4 C	
	RWT-SS-01A-15	TCL VOCs (% moisture)	Soil	7/30/2008	1120	1	4 oz glass	4 C	
	RWT-SS-01A-15	TCL VOCs	Soil	7/30/2008	1120	3	5 gram encore	4 C	
	RWT-SS-01A-15	TCL SVOCs	Soil	7/30/2008	1120	1	8 oz glass	4 C	
	RWT-SS-01A-15	TAL Metals + Hg	Soil	7/30/2008	1120	1	8 oz glass	4 C	
	RWT-SS-02-05	TCL VOCs (% moisture)	Soil	7/30/2008	1018	1	4 oz glass	4 C	
	RWT-SS-02-05	TCL VOCs	Soil	7/30/2008	1018	3	5 gram encore	4 C	
	RWT-SS-02-05	TCL SVOCs	Soil	7/30/2008	1018	1	8 oz glass	4 C	

Special instructions:

SAMPLES TRANSFERRED FROM	CHAIN OF CUSTODY #

[illegible]

1090 King Georges Post Rd
Edison NJ 08837
OSC Joeshp Cosentino

CHAIN OF CUSTODY RECORD

Site #: Readburn Wood Tar
Contact Name: Kristen Sharp
Contact Phone: 9085652974

No: 1200-07/30/08-0004

AirbillNo: N/A
Lab: DESA
Lab Contact: John Birri

Lab #	Sample #	Analyses	Matrix	Collected	Sample Time	Numb Cont	Container	Preservative	MS/MSD
	RWT-SS-02-05	TAL Metals + Hg	Soil	7/30/2008	1018	1	8 oz glass	4 C	
	RWT-SS-02-10	TCL VOCs (% moisture)	Soil	7/30/2008	1020	1	4 oz glass	4 C	
	RWT-SS-02-10	TCL VOCs	Soil	7/30/2008	1020	3	5 gram encore	4 C	
	RWT-SS-02-10	TCL SVOCs	Soil	7/30/2008	1020	1	8 oz glass	4 C	
	RWT-SS-02-10	TAL Metals + Hg	Soil	7/30/2008	1020	1	8 oz glass	4 C	
	RWT-SS-02-15	TCL VOCs (% moisture)	Soil	7/30/2008	1032	1	4 oz glass	4 C	
	RWT-SS-02-15	TCL VOCs	Soil	7/30/2008	1032	3	5 gram encore	4 C	
	RWT-SS-02-15	TCL SVOCs	Soil	7/30/2008	1032	1	8 oz glass	4 C	
	RWT-SS-02-15	TAL Metals + Hg	Soil	7/30/2008	1032	1	8 oz glass	4 C	
	RWT-SS-02A-15	TCL VOCs (% moisture)	Soil	7/30/2008	1040	1	4 oz glass	4 C	
	RWT-SS-02A-15	TCL VOCs	Soil	7/30/2008	1040	3	5 gram encore	4 C	
	RWT-SS-02A-15	TCL SVOCs	Soil	7/30/2008	1040	1	8 oz glass	4 C	
	RWT-SS-02A-15	TAL Metals + Hg	Soil	7/30/2008	1040	1	8 oz glass	4 C	
	RWT-SS-03-05	TCL VOCs (% moisture)	Soil	7/30/2008	1551	1	4 oz glass	4 C	
	RWT-SS-03-05	TCL VOCs	Soil	7/30/2008	1551	3	5 gram encore	4 C	
	RWT-SS-03-05	TCL SVOCs	Soil	7/30/2008	1551	1	8 oz glass	4 C	
	RWT-SS-03-05	TAL Metals + Hg	Soil	7/30/2008	1551	1	8 oz glass	4 C	
	RWT-SS-03-10	TCL VOCs (% moisture)	Soil	7/30/2008	1600	1	4 oz glass	4 C	
	RWT-SS-03-10	TCL VOCs	Soil	7/30/2008	1600	3	5 gram encore	4 C	

Special Instructions:

[illegible][illegible]

1090 King Georges Post Rd
Edison NJ 08837
OSC Joeshp Cosentino

CHAIN OF CUSTODY RECORD

Site #: Readburn Wood Tar
Contact Name: Kristen Sharp
Contact Phone: 9085652974

No: 1200-07/30/08-0004

AirbillNo: N/A
Lab: DESA
Lab Contact: John Birri

Lab #	Sample #	Analyses	Matrix	Collected	Sample Time	Numb Cont	Container	Preservative	MS/MSD
	RWT-SS-03-10	TCL SVOCs	Soil	7/30/2008	1600	1	8 oz glass	4 C	
	RWT-SS-03-10	TAL Metals + Hg	Soil	7/30/2008	1600	1	8 oz glass	4 C	
	RWT-SS-03-15	TCL VOCs (% moisture)	Soil	7/30/2008	1610	1	4 oz glass	4 C	
	RWT-SS-03-15	TCL VOCs	Soil	7/30/2008	1610	3	5 gram encore	4 C	
	RWT-SS-03-15	TCL SVOCs	Soil	7/30/2008	1610	1	8 oz glass	4 C	
	RWT-SS-03-15	TAL Metals + Hg	Soil	7/30/2008	1610	1	8 oz glass	4 C	
	RWT-SS-04-05	TCL VOCs (% moisture)	Soil	7/30/2008	0950	1	4 oz glass	4 C	
	RWT-SS-04-05	TCL VOCs	Soil	7/30/2008	0950	3	5 gram encore	4 C	
	RWT-SS-04-05	TCL SVOCs	Soil	7/30/2008	0950	1	8 oz glass	4 C	
	RWT-SS-04-05	TAL Metals + Hg	Soil	7/30/2008	0950	1	8 oz glass	4 C	
	RWT-SS-04-10	TCL VOCs (% moisture)	Soil	7/30/2008	0958	1	4 oz glass	4 C	
	RWT-SS-04-10	TCL VOCs	Soil	7/30/2008	0958	3	5 gram encore	4 C	
	RWT-SS-04-10	TCL SVOCs	Soil	7/30/2008	0958	1	8 oz glass	4 C	
	RWT-SS-04-10	TAL Metals + Hg	Soil	7/30/2008	0958	1	8 oz glass	4 C	
	RWT-SS-04-15	TCL VOCs (% moisture)	Soil	7/30/2008	1008	1	4 oz glass	4 C	
	RWT-SS-04-15	TCL VOCs	Soil	7/30/2008	1008	3	5 gram encore	4 C	
	RWT-SS-04-15	TCL SVOCs	Soil	7/30/2008	1008	1	8 oz glass	4 C	
	RWT-SS-04-15	TAL Metals + Hg	Soil	7/30/2008	1008	1	8 oz glass	4 C	
	RWT-SS-05-05	TCL VOCs (% moisture)	Soil	7/30/2008	1427	1	4 oz glass	4 C	

Special Instructions:

SAMPLES TRANSFERRED FROM

CHAIN OF CUSTODY #

[illegible]

1090 King Georges Post Rd
Edison NJ 08837
OSC Joeshp Cosentino

CHAIN OF CUSTODY RECORD

Site #: Readburn Wood Tar
Contact Name: Kristen Sharp
Contact Phone: 9085652974

No: 1200-07/30/08-0004
AirbillNo: N/A
Lab: DESA
Lab Contact: John Birri

Lab #	Sample #	Analyses	Matrix	Collected	Sample Time	Numb Cont	Container	Preservative	MS/MSD
	RWT-SS-05-05	TCL VOCs	Soil	7/30/2008	1427	3	5 gram encore	4 C	
	RWT-SS-05-05	TCL SVOCs	Soil	7/30/2008	1427	1	8 oz glass	4 C	
	RWT-SS-05-06	TAL Metals + Hg	Soil	7/30/2008	1427	1	8 oz glass	4 C	
	RWT-SS-05-10	TCL VOCs (% moisture)	Soil	7/30/2008	1437	1	4 oz glass	4 C	
	RWT-SS-05-10	TCL VOCs	Soil	7/30/2008	1437	3	5 gram encore	4 C	
	RWT-SS-05-10	TCL SVOCs	Soil	7/30/2008	1437	1	8 oz glass	4 C	
	RWT-SS-05-10	TAL Metals + Hg	Soil	7/30/2008	1437	1	8 oz glass	4 C	
	RWT-SS-05-15	TCL VOCs (% moisture)	Soil	7/30/2008	1450	1	4 oz glass	4 C	
	RWT-SS-05-15	TCL VOCs	Soil	7/30/2008	1450	3	5 gram encore	4 C	
	RWT-SS-05-15	TCL SVOCs	Soil	7/30/2008	1450	1	8 oz glass	4 C	
	RWT-SS-05-15	TAL Metals + Hg	Soil	7/30/2008	1450	1	8 oz glass	4 C	
	RWT-SS-06-05	TCL VOCs (% moisture)	Soil	7/30/2008	1332	1	4 oz glass	4 C	
	RWT-SS-06-05	TCL VOCs	Soil	7/30/2008	1332	3	5 gram encore	4 C	
	RWT-SS-06-05	TCL SVOCs	Soil	7/30/2008	1332	1	8 oz glass	4 C	
	RWT-SS-06-05	TAL Metals + Hg	Soil	7/30/2008	1332	2	8 oz glass	4 C	Y
	RWT-SS-06-10	TCL VOCs (% moisture)	Soil	7/30/2008	1338	1	4 oz glass	4 C	
	RWT-SS-06-10	TCL VOCs	Soil	7/30/2008	1338	3	5 gram encore	4 C	
	RWT-SS-06-10	TCL SVOCs	Soil	7/30/2008	1338	1	8 oz glass	4 C	
	RWT-SS-06-10	TAL Metals + Hg	Soil	7/30/2008	1338	1	8 oz glass	4 C	

Special Instructions:

SAMPLES TRANSFERRED FROM	CHAIN OF CUSTODY #

[illegible]

Weston Solutions
1090 King Georges Post Rd
Edison NJ 08837
OSC Joesph Cosentino

CHAIN OF CUSTODY RECORD

Site #: Readburn Wood Tar
Contact Name: Kristen Sharp
Contact Phone: 9085652974

No: 1200-07/30/08-0004

AirbillNo: N/A
Lab: DESA
Lab Contact: John Birri

Lab #	Sample #	Analyses	Matrix	Collected	Sample Time	Numb Cont	Container	Preservative	MS/MSD
	RWT-SS-06-15	TCL VOCs (% moisture)	Soil	7/30/2008	1350	1	4 oz glass	4 C	
	RWT-SS-06-15	TCL VOCs	Soil	7/30/2008	1350	3	5 gram encore	4 C	
	RWT-SS-06-15	TCL SVOCs	Soil	7/30/2008	1350	1	8 oz glass	4 C	
	RWT-SS-06-15	TAL Metals + Hg	Soil	7/30/2008	1350	1	8 oz glass	4 C	
	RWT-SS-07-05	TCL VOCs (% moisture)	Soil	7/30/2008	1400	1	4 oz glass	4 C	
	RWT-SS-07-05	TCL VOCs	Soil	7/30/2008	1400	3	5 gram encore	4 C	
	RWT-SS-07-05	TCL SVOCs	Soil	7/30/2008	1400	1	8 oz glass	4 C	
	RWT-SS-07-05	TAL Metals + Hg	Soil	7/30/2008	1400	1	8 oz glass	4 C	
	RWT-SS-07-10	TCL VOCs (% moisture)	Soil	7/30/2008	1405	1	4 oz glass	4 C	
	RWT-SS-07-10	TCL VOCs	Soil	7/30/2008	1405	3	5 gram encore	4 C	
	RWT-SS-07-10	TCL SVOCs	Soil	7/30/2008	1405	1	8 oz glass	4 C	
	RWT-SS-07-10	TAL Metals + Hg	Soil	7/30/2008	1405	1	8 oz glass	4 C	
	RWT-SS-07-15	TCL VOCs (% moisture)	Soil	7/30/2008	1415	1	4 oz glass	4 C	
	RWT-SS-07-15	TCL VOCs	Soil	7/30/2008	1415	3	5 gram encore	4 C	
	RWT-SS-07-15	TCL SVOCs	Soil	7/30/2008	1415	1	8 oz glass	4 C	
	RWT-SS-07-15	TAL Metals + Hg	Soil	7/30/2008	1415	2	8 oz glass	4 C	Y
	RWT-SS-08-05	TCL VOCs (% moisture)	Soil	7/30/2008	1205	1	4 oz glass	4 C	
	RWT-SS-08-05	TCL VOCs	Soil	7/30/2008	1205	3	5 gram encore	4 C	
	RWT-SS-08-05	TCL SVOCs	Soil	7/30/2008	1205	1	8 oz glass	4 C	

Special Instructions:

SAMPLES TRANSFERRED FROM
CHAIN OF CUSTODY #

[illegible]

1090 King Georges Post Rd
Edison NJ 08837
OSC Joeshp Cosentino

CHAIN OF CUSTODY RECORD

Site #: Readburn Wood Tar
Contact Name: Kristen Sharp
Contact Phone: 9085652974

No: 1200-07/30/08-0004

AirbillNo: N/A
Lab: DESA
Lab Contact: John Birri

Lab #	Sample #	Analyses	Matrix	Collected	Sample Time	Numb Cont	Container	Preservative	MS/MSD
	RWT-SS-08-05	TAL Metals + Hg	Soil	7/30/2008	1205	1	8 oz glass	4 C	
	RWT-SS-08-10	TCL VOCs (% moisture)	Soil	7/30/2008	1215	1	4 oz glass	4 C	
	RWT-SS-08-10	TCL VOCs	Soil	7/30/2008	1215	3	5 gram encore	4 C	
	RWT-SS-08-10	TCL SVOCs	Soil	7/30/2008	1215	1	8 oz glass	4 C	
	RWT-SS-08-10	TAL Metals + Hg	Soil	7/30/2008	1215	1	8 oz glass	4 C	
	RWT-SS-08-15	TCL VOCs (% moisture)	Soil	7/30/2008	1237	1	4 oz glass	4 C	
	RWT-SS-08-15	TCL VOCs	Soil	7/30/2008	1237	3	5 gram encore	4 C	
	RWT-SS-08-15	TCL SVOCs	Soil	7/30/2008	1237	1	8 oz glass	4 C	
	RWT-SS-08-15	TAL Metals + Hg	Soil	7/30/2008	1237	1	8 oz glass	4 C	
	RWT-SS-09-05	TCL VOCs (% moisture)	Soil	7/30/2008	0831	1	4 oz glass	4 C	
	RWT-SS-09-05	TCL VOCs	Soil	7/30/2008	0831	3	5 gram encore	4 C	
	RWT-SS-09-05	TCL SVOCs	Soil	7/30/2008	0831	1	8 oz glass	4 C	
	RWT-SS-09-05	TAL Metals + Hg	Soil	7/30/2008	0831	1	8 oz glass	4 C	
	RWT-SS-09-10	TCL VOCs (% moisture)	Soil	7/30/2008	0844	1	4 oz glass	4 C	
	RWT-SS-09-10	TCL VOCs	Soil	7/30/2008	0844	3	5 gram encore	4 C	
	RWT-SS-09-10	TCL SVOCs	Soil	7/30/2008	0844	1	8 oz glass	4 C	
	RWT-SS-09-10	TAL Metals + Hg	Soil	7/30/2008	0844	1	8 oz glass	4 C	
	RWT-SS-09-15	TCL VOCs (% moisture)	Soil	7/30/2008	0855	1	4 oz glass	4 C	
	RWT-SS-09-15	TCL VOCs	Soil	7/30/2008	0855	3	5 gram encore	4 C	

Special Instructions:

SAMPLES TRANSFERRED FROM	CHAIN OF CUSTODY #

[illegible]

Weston Solutions

1090 King Georges Post Rd
Edison NJ 08837
OSC Joeshp Cosentino

CHAIN OF CUSTODY RECORD

Site #: Readburn Wood Tar
Contact Name: Kristen Sharp
Contact Phone: 9085652974

No: 1200-07/30/08-0004

AirbillNo: N/A

Lab: DESA

Lab Contact: John Birri

Lab #	Sample #	Analyses	Matrix	Collected	Sample Time	Numb Cont	Container	Preservative	MS/MSD
	RWT-SS-09-15	TCL SVOCs	Soil	7/30/2008	0855	1	8 oz glass	4 C	
	RWT-SS-09-15	TAL Metals + Hg	Soil	7/30/2008	0855	1	8 oz glass	4 C	
	RWT-SS-10-05	TCL VOCs (% moisture)	Soil	7/30/2008	0915	1	4 oz glass	4 C	
	RWT-SS-10-05	TCL VOCs	Soil	7/30/2008	0915	3	5 gram encore	4 C	
	RWT-SS-10-05	TCL SVOCs	Soil	7/30/2008	0915	1	8 oz glass	4 C	
	RWT-SS-10-05	TAL Metals + Hg	Soil	7/30/2008	0915	1	8 oz glass	4 C	
	RWT-SS-10-10	TCL VOCs (% moisture)	Soil	7/30/2008	0925	1	4 oz glass	4 C	
	RWT-SS-10-10	TCL VOCs	Soil	7/30/2008	0925	3	5 gram encore	4 C	
	RWT-SS-10-10	TCL SVOCs	Soil	7/30/2008	0925	1	8 oz glass	4 C	
	RWT-SS-10-10	TAL Metals + Hg	Soil	7/30/2008	0925	1	8 oz glass	4 C	
	RWT-SS-10-15	TCL VOCs (% moisture)	Soil	7/30/2008	0931	1	4 oz glass	4 C	
	RWT-SS-10-15	TCL VOCs	Soil	7/30/2008	0931	3	5 gram encore	4 C	
	RWT-SS-10-15	TCL SVOCs	Soil	7/30/2008	0931	1	8 oz glass	4 C	
	RWT-SS-10-15	TAL Metals + Hg	Soil	7/30/2008	0931	1	8 oz glass	4 C	
	RWT-SS-11-05	TCL VOCs (% moisture)	Soil	7/30/2008	0750	1	4 oz glass	4 C	
	RWT-SS-11-05	TCL VOCs	Soil	7/30/2008	0750	3	5 gram encore	4 C	
	RWT-SS-11-05	TCL SVOCs	Soil	7/30/2008	0750	1	8 oz glass	4 C	
	RWT-SS-11-05	TAL Metals + Hg	Soil	7/30/2008	0750	1	8 oz glass	4 C	
	RWT-SS-11-10	TCL VOCs (% moisture)	Soil	7/30/2008	0758	1	4 oz glass	4 C	

Special instructions:

SAMPLES TRANSFERRED FROM

CHAIN OF CUSTODY #

[illegible]

1090 King Georges Post Rd
Edison NJ 08837
OSC Joeshp Cosentino

CHAIN OF CUSTODY RECORD

Site #: Readburn Wood Tar
Contact Name: Kristen Sharp
Contact Phone: 9085652974

No: 1200-07/30/08-0004

AirbillNo: N/A
Lab: DESA
Lab Contact: John Birrell

Lab #	Sample #	Analyses	Matrix	Collected	Sample Time	Numb Cont	Container	Preservative	MS/MSD
	RWT-SS-11-10	TCL VOCs	Soil	7/30/2008	0758	3	5 gram encore	4 C	
	RWT-SS-11-10	TCL SVOCs	Soil	7/30/2008	0758	1	8 oz glass	4 C	
	RWT-SS-11-10	TAL Metals + Hg	Soil	7/30/2008	0758	1	8 oz glass	4 C	
	RWT-SS-11-15	TCL VOCs (% moisture)	Soil	7/30/2008	0809	1	4 oz glass	4 C	
	RWT-SS-11-15	TCL VOCs	Soil	7/30/2008	0809	3	5 gram encore	4 C	
	RWT-SS-11-15	TCL SVOCs	Soil	7/30/2008	0809	1	8 oz glass	4 C	
	RWT-SS-11-15	TAL Metals + Hg	Soil	7/30/2008	0809	2	8 oz glass	4 C	Y
	RWT-SS-27-05	TCL VOCs (% moisture)	Soil	7/30/2008	1511	1	4 oz glass	4 C	
	RWT-SS-27-05	TCL VOCs	Soil	7/30/2008	1511	3	5 gram encore	4 C	
	RWT-SS-27-05	TCL SVOCs	Soil	7/30/2008	1511	1	8 oz glass	4 C	
	RWT-SS-27-05	TAL Metals + Hg	Soil	7/30/2008	1511	1	8 oz glass	4 C	N
	RWT-SS-27-10	TCL VOCs (% moisture)	Soil	7/30/2008	1530	1	4 oz glass	4 C	
	RWT-SS-27-10	TCL VOCs	Soil	7/30/2008	1530	3	5 gram encore	4 C	
	RWT-SS-27-10	TCL SVOCs	Soil	7/30/2008	1530	1	8 oz glass	4 C	
	RWT-SS-27-10	TAL Metals + Hg	Soil	7/30/2008	1530	1	8 oz glass	4 C	N
	RWT-SS-27-15	TCL VOCs (% moisture)	Soil	7/30/2008	1541	1	4 oz glass	4 C	
	RWT-SS-27-15	TCL VOCs	Soil	7/30/2008	1541	3	5 gram encore	4 C	
	RWT-SS-27-15	TCL SVOCs	Soil	7/30/2008	1541	1	8 oz glass	4 C	
	RWT-SS-27-15	TAL Metals + Hg	Soil	7/30/2008	1541	1	8 oz glass	4 C	N

Special Instructions:

SAMPLES TRANSFERRED FROM
CHAIN OF CUSTODY #

[illegible]

**FedEx
Tracking
Number**

0487 3384 0498

1 From Deane (print and press hard) Sender's FedEx
+128108 Account Number
Date
SENDEX CLOSING NUMBER ONLY
4023547103

Sender's Name Kristen Sharp Phone 9085652974

Company Weston Solutions

Address 1090 King Georges Post Rd #201
City Cd. Date Rec'd State Room

City Edison State NJ ZIP 08837

2 Your Internal Billing Reference 20401.035.0009.2013
First 24 characters will appear on invoice.

3 To Recipient's Name John Birzi Phone 732-906-6986

Company USEPA DESA Laboratory

Recipient's Address: 2890 Woodbridge Ave.

Address Bldg. 209 MS-230

City Edison State NJ ZIP 08837



Stable and secure business relationships are the foundation of a successful business. To ensure your business is protected, we offer a comprehensive range of services, including:

without obtaining a signature for delivery.

Rev. Date 10-06-Part 0155281 © 1994-2006 FedEx. PRINTED IN U.S.A. SAY

Sender's Copy

4a Express Package Service

☒ **FedEx Priority Overnight**
 Earliest next business morning delivery to select locations. Saturday delivery not available.

☐ **FedEx Standard Overnight**
 Earliest next business morning delivery to select locations. Saturday delivery not available.

☐ **FedEx First Overnight**
 Earliest next business morning delivery to select locations. Saturday delivery not available.

Packages up to 150 lbs.

☐ **FedEx 2Day**
Second business day.* Thursday
shipments will be delivered on Monday
unless SATURDAY Delivery is selected.

☐ **FedEx Express Saver**
Third business day.*
Saturday delivery NOT available.

*Excludes holidays and non-business days. Delivery times are estimates and may vary. ©2004 FedEx Corporation. All rights reserved.

4b Express Freight Service

Express charges into the following minimum charge unit—Pound rate.

<input type="checkbox"/> FedEx Day Freight [®]	<input type="checkbox"/> FedEx 2day Freight	<input type="checkbox"/> FedEx 3day Freight	Packages over 150 lbs
Next business day [®] delivery	Second business day [®] delivery	Third business day [®] delivery	* To most locations
Shipments will be delivered on Monday unless SATURDAY Delivery is selected.	Shipments will be delivered on Monday unless SATURDAY Delivery is selected.	Shipments will be delivered on Monday unless SATURDAY Delivery is selected.	

[®] Call for Confirmation

5 Packaging

<input type="checkbox"/> FedEx Envelope*	<input type="checkbox"/> FedEx Pak* Includes FedEx Small Pak, FedEx Large Pak, and FedEx Sturdy Pak.	<input type="checkbox"/> FedEx Box	<input type="checkbox"/> FedEx Tube	<input checked="" type="checkbox"/> Other
--	--	------------------------------------	-------------------------------------	---

* Declared value limit \$500.

6 Special Handling

☐ **SATURDAY Delivery**
NOT Available for
FedEx Priority Overnight, FedEx
First Overnight, FedEx Express
Saver, or FedEx 3D[®] Mail.

☐ **HOLD Weekday**
NOT Available for
FedEx Priority Overnight,
FedEx First Overnight,
FedEx Express Saver,
or FedEx 3D[®] Mail.

☐ **HOLD Saturday**
at FedEx Location
Available ONLY for
FedEx Priority Overnight and
FedEx First Overnight.
FedEx duty to select locations.

_____ Include FedEx address in Section 3.

Does this shipment contain dangerous goods?

One box must be checked.

<input checked="" type="checkbox"/> No	<input type="checkbox"/> Yes Airbrushed Stages a Declaration permitted.
<input type="checkbox"/> Dry Ice Dry Ice as UN 1845	<input type="checkbox"/> Cargo Aircraft only

Dangerous goods (including dry ice) cannot be shipped in FedEx packaging.

7 Payment Bill to: ☐ **Sender** ☐ **Recipient** ☒ **Third Party** ☐ **Credit Card** ☐ **Cash/Check**

Enter FedEx Acct. No. or Credit Card No. below.

402350103	Exp. Date
Total Packages	Total Declared Value
Total Weight	

Our liability is limited to \$100 unless you declare a higher value. See back for details. By using this Airtel you agree to the service conditions on the back of this Airtel and in the current FedEx Service Guide, including terms that limit our liability.

8 Residential Delivery Signature Options

<input type="checkbox"/>	No Signature Required Package may be left without obtaining a signature for delivery.
<input type="checkbox"/>	Direct Signature Someone at recipient's address may sign for delivery. <i>Fee applies.</i>
<input type="checkbox"/>	Indirect Signature If no one is available at recipient's address, someone at a neighboring address may sign for delivery. <i>Fee applies.</i>

Rev. Date 10-06-Part 0155281 © 1994-2006 FedEx. PRINTED IN U.S.A. SAY



FedEx Tracking Number

8440

Sender's Copy

1 From 129108 Sender's FedEx Account Number 102350103 **SENDER ONLY**
 Date 12/29/08

Sender's Name Kristen Sharp Phone 908 565 5000

Company Weston Solutions

Address 1090 King George Post Rd #201
Edison State NJ ZIP 08837

2 Your Internal Billing Reference 20401.035.009.2013

3 To Recipient's Name John Bieri Phone 732.906.0880
 Company USEPA DESA Laboratory
 Address 2890 Woodbridge Ave.
 We cannot deliver to P.O. boxes or P.O. ZIP codes.

Address Edison State NJ ZIP 08837



RETAIN THIS COPY FOR YOUR RECORDS.

4 Express Package Service
☒ FedEx Priority Overnight ☐ FedEx Standard Overnight ☐ FedEx First Overnight
 Packages up to 150 lbs. Saturday Delivery NOT available. Sunday Delivery NOT available.

☐ FedEx 2Day ☐ FedEx Express Saver
 Packages up to 150 lbs. Saturday Delivery NOT available. Sunday Delivery NOT available.

4b Express Freight Service
☐ FedEx 1Day Freight ☐ FedEx 2Day Freight ☐ FedEx 3Day Freight
 Packages over 150 lbs. Saturday Delivery NOT available. Sunday Delivery NOT available.

5 Packaging
☐ FedEx Envelope* ☐ FedEx Pak* ☐ FedEx Tube* ☒ Other
 Includes FedEx Small Pak, FedEx Large Pak, and FedEx Sturdy Pak. Declared value limit \$500.

6 Special Handling
☐ SATURDAY Delivery ☐ HOLD Weekday ☐ HOLD Saturday
 NOT Available for FedEx Location. Available ONLY for FedEx Priority Overnight and FedEx First Overnight. FedEx First Overnight is subject to availability.

Does this shipment contain dangerous goods?
☒ No ☐ Yes ☐ Dry Ice ☐ Cargo Aircraft Only
 One box must be checked. Shipper's Declaration not required.

Payment Bill to: ☐ Sender ☐ Recipient ☒ Third Party ☐ Credit Card ☐ Cash/Check
 Enter FedEx Acct. No. or Credit Card No. below.

Total Packages 402350103 Total Weight 520 Total Declared Value \$ 00

8 Residential Delivery Signature Options
☐ Signature ☐ Direct Signature ☐ Indirect Signature
 If you require a signature, check Direct or Indirect.

Signature 520

Rev. Date: 01/15/08 © 1994-2008 FedEx-PRINTED IN U.S.A. SBY

redEx® US Airbill

Express

8640 4833 1830

1 From 1/29 Sender's FedEx Account Number 402560 NU103 LY

Sender's Name Kristen Sharp Phone 908 5652974

Company Weston Solutions

Address 1090 King Georges Asht #201

City Edison State NJ ZIP 08837

2 Your Internal Billing Reference 20401.035809.2013

3 To Recipient's Name John Bielei Phone 732.906.0886

Company USEPA DESA Laboratory

Address 2890 Woodbridge Ave.

City Edison State NJ ZIP 08857

To request a package be held at a specific FedEx location, print FedEx address here.



Sender's Copy

4a Express Package Service

☒ FedEx Priority Overnight ☐ FedEx Standard Overnight ☐ FedEx First Overnight

☐ FedEx 2Day ☐ FedEx Express Saver ☐ FedEx 3Day Freight

4b Express Freight Service

☐ FedEx 1Day Freight ☐ FedEx 2Day Freight ☐ FedEx 3Day Freight

5 Packaging ☐ FedEx Envelope ☐ FedEx Pak ☐ FedEx Tube ☒ Other

6 Special Handling ☐ SATURDAY Delivery ☐ HOLD Weekday ☐ HOLD Saturday

7 Payment Bill to ☐ Sender ☐ Recipient ☒ Third Party ☐ Credit Card ☐ Cash/Check

Total Packages 1 Total Weight 402356103 Total Declared Value \$.00

8 Residential Delivery Signature Options ☐ No Signature Required ☐ Direct Signature ☐ Indirect Signature

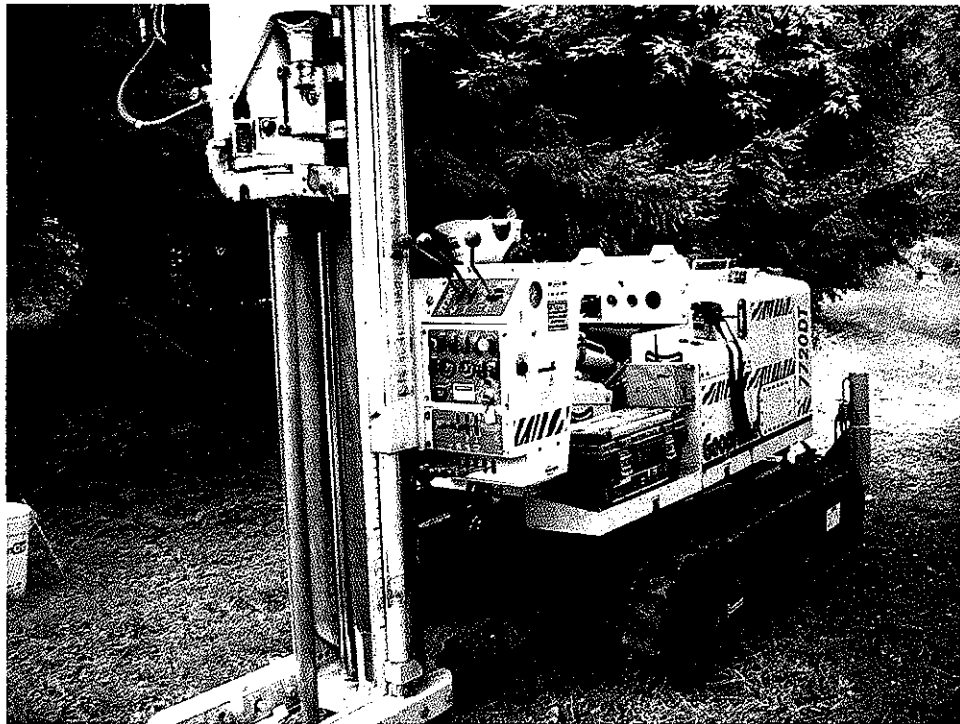
520

Rev. Date 10/29/09 FedEx® PRINTED IN U.S.A. S17

ATTACHMENT D

Photographic Documentation

Readburn Wood Tar
Site Assessment
July 28 – July 30, 2008

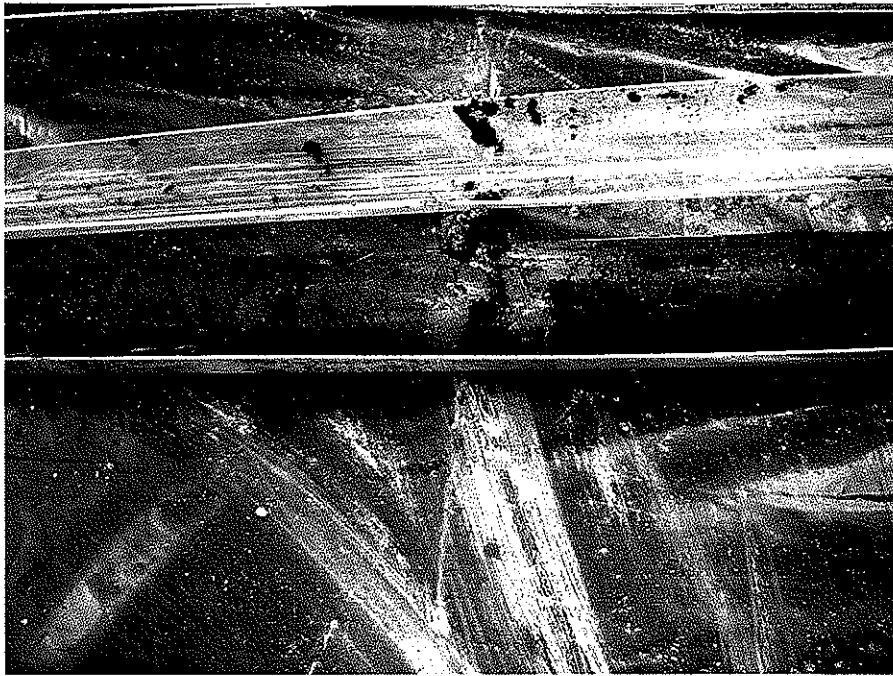


Photograph One: Geoprobe Model 7720DT with a 5 foot macroprobe was used to collect soils up to 15 feet below grade for the subsurface soil investigation.

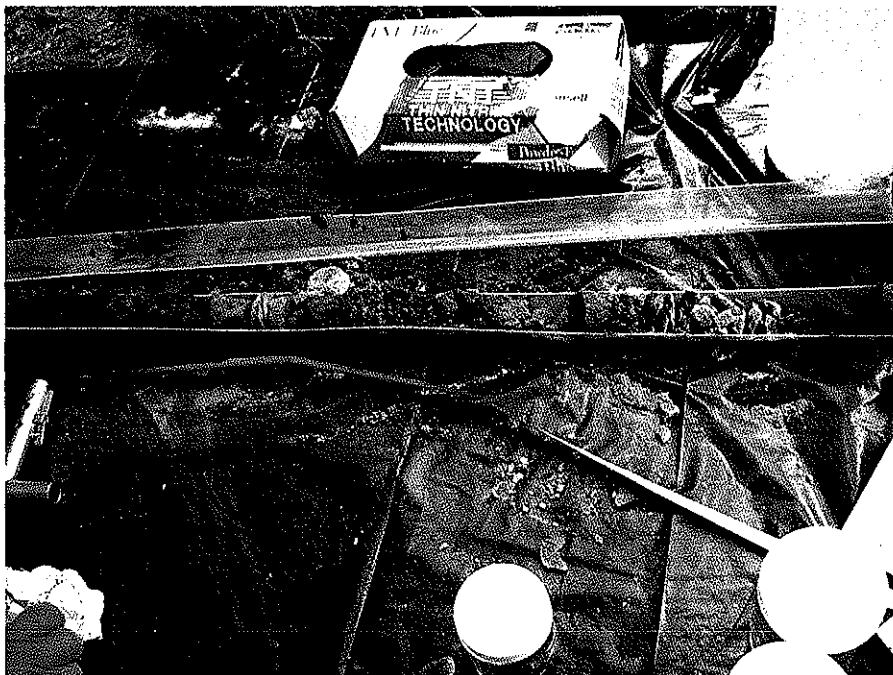


Photograph Two: Acetate sleeves were used to collect soils. Each sleeve represented one of three depth intervals, 0-5 feet, 5-10 feet, 10-15 feet. Organic vapor readings and soil descriptions were logged into a Boring Log before sample collection.

Readburn Wood Tar
Site Assessment
July 28 – July 30, 2008



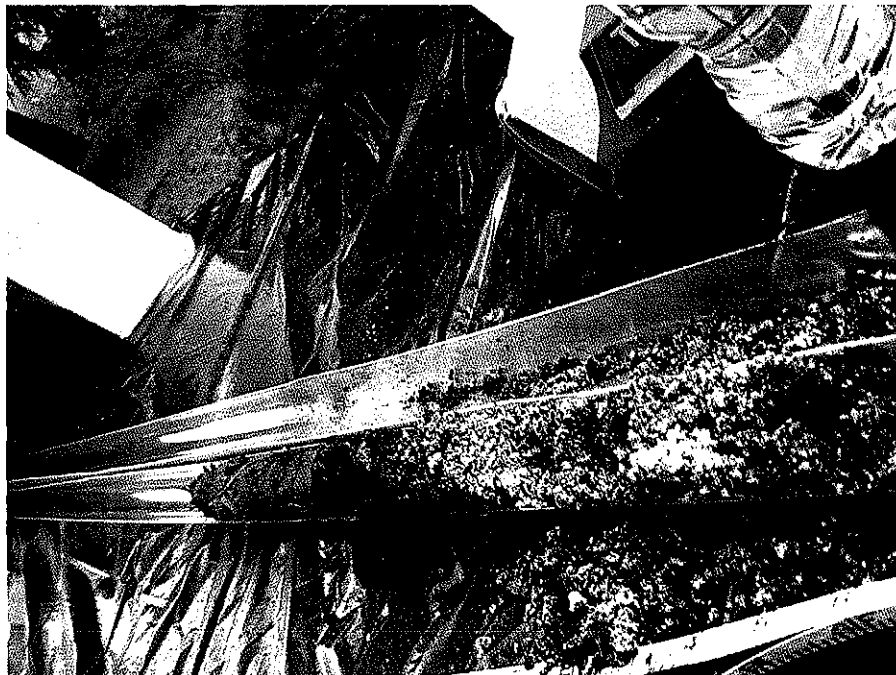
Photograph Three: Sample location 16, 0-5 feet is depicted above. The soils from this location were dark in color. However, organic vapor readings were not detected above background.



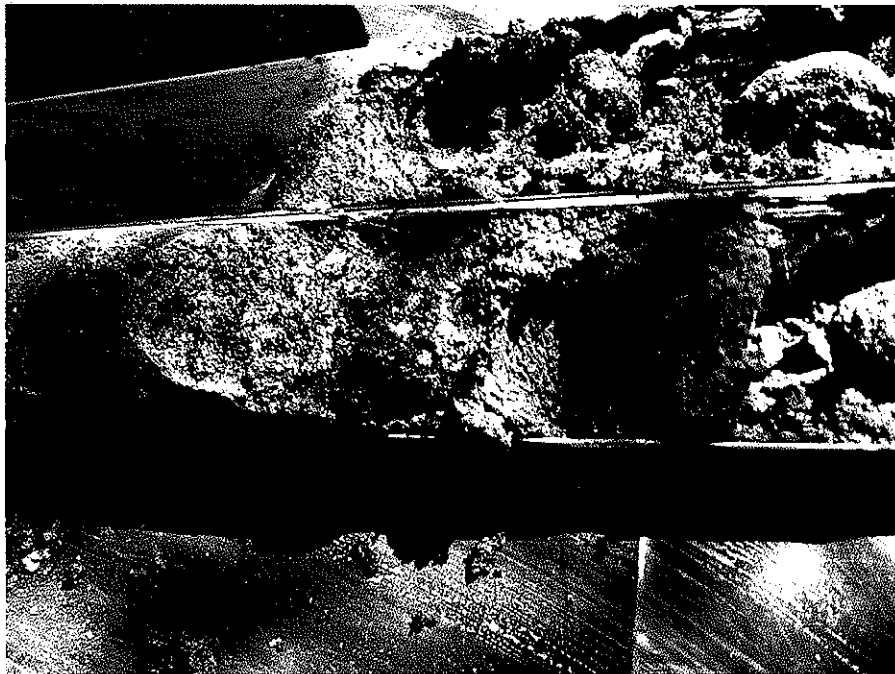
Photograph Four: Sample location 19, 0-5 feet is depicted above. Difficulty was encountered to collect sufficient volume at many locations due to the large volume of rocks collected at each sampling location.



Photograph Five: Tree branches had to be removed to allow the Geoprobe to gain height access at certain sample locations.



Photograph Six: Sample RWT-SS-15 from 0-5 feet below grade. This sample contained black material and ash.

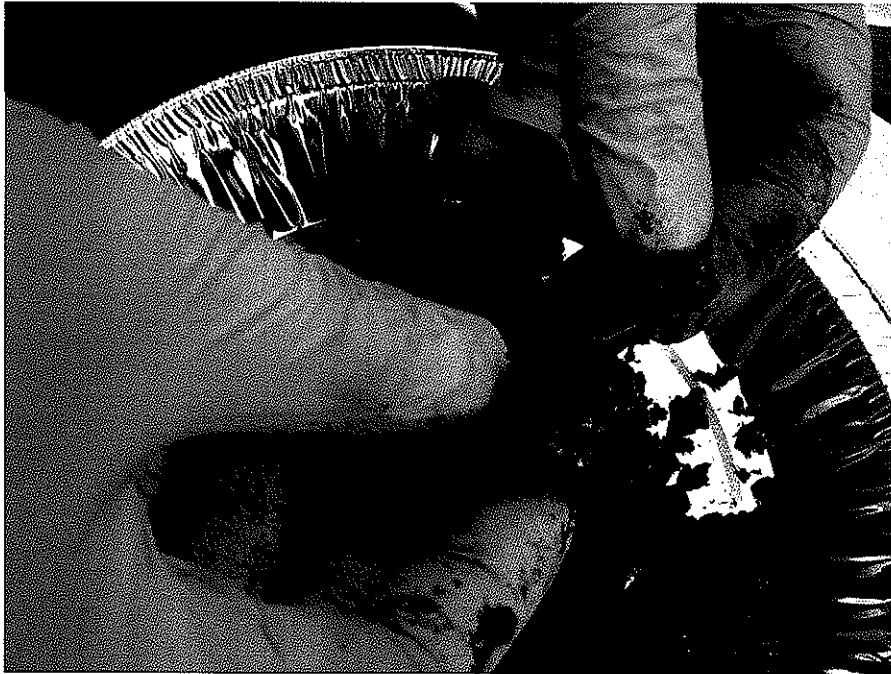


Photograph Seven: Sample RWT-SS-14 was collected from 0-5 feet below grade contained black material and ash.



Photograph Eight: Sample RWT-SS-12 was collected from 0-5 feet below grade and contained black material with a strong distinct smell of burning charcoal.

Readburn Wood Tar
Site Assessment
July 28 – July 30, 2008



Photograph Nine: Sample RWT-SS-09 was collected from 0-5 feet below grade and contained the same material as RWT-SS-12 (as pictured in photograph eight).

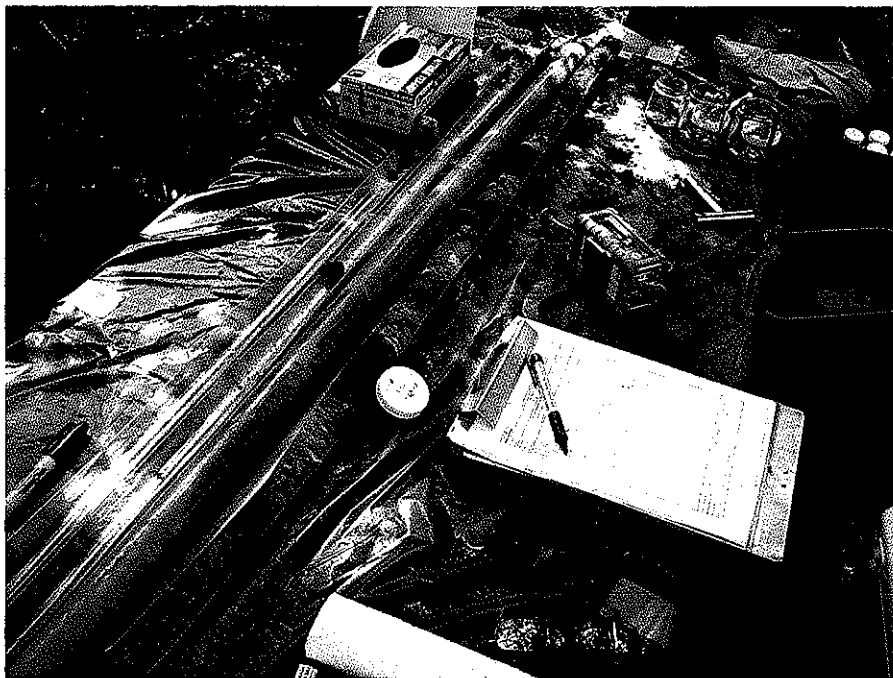


Photograph Ten: Sample RWT-SS-10 from 0-5 feet below grade also containing the same odorous material as samples RWT-SS-12 and RWT-SS-09.

Readburn Wood Tar
Site Assessment
July 28 – July 30, 2008



Photograph Eleven: Sample RWT-SS-02 from 5-10 feet below grade contained black material and ash.



Photograph Twelve: Sample RWT-SS-01 from 5-10 feet below grade contained black material, which was sampled. However, the rest of the core contained rocks resulting in a low volume for the sample.

Readburn Wood Tar
Site Assessment
July 28 – July 30, 2008



Photograph Thirteen: Sample RWT-SS-05 was collected from 5-10 feet below grade and contained black material, not as odorous as the material from RWT-SS-12 0-5 feet below grade, but of the same consistency.

ATTACHMENT E

Boring Logs



GEOPROBE Soil Boring Log

Job Name	Readburn Wood Tar	Boring No.	1	Logged By	
Job No.	TO-0009-0014	Page	1 of 1	J. Siegel	
Date Drilled	7/30/2008	Boring Method/ Sample Method	Geoprobe / Macrocore 5-ft		
Drilling Co.	Zebra Environment	Completion Depth	15 Feet		
Drill Foreman	Jeff Snyder	Location	1		

Depth (Feet)	Recovery (% or inches)	PID every 6"	Visual Description	Sample No.	Comments
5	46"	0	Sample is Predominately Brick	RWT-SS-01-05 4-5' 10:50	
		0	1' Rocks and Sand at Base		
		0.4			
10	33"	0	Brick 2", Wood Tar, Concrete, Sand, Gravel Mix	RWT-SS-01-10 5-6' 11:03	Sample is Tar & Ash
		1.6	Wood Tar is Approximately 1' Deep		
		1	Sample has Mild Odor		
15	48"	0.3	22" Coarse Gravel, Sand, Silt Over	RWT-SS-01-15 13-15' 11:14 Duplicate Sample RWT-SS-01-15A	
		0.3	Silty Rocky Sand		
		1	Odor		
		2			

Depth to Groundwater: _____

Backfill Type:

Cuttings

Monitoring Well Installed? NO

Monitoring Well ID: _____

Location surveyed? Yes

GPS



GEOPROBE Soil Boring Log

Job Name	Readburn Wood Tar	Boring No.	2	Logged By	
Job No.	TO-0009-0014	Page	1 of 1	J. Siegel	
Date Drilled	7/30/2008	Boring Method/ Sample Method	Geoprobe / Macrocore 5-ft		
Drilling Co.	Zebra Environment	Completion Depth	15 Feet		
Drill Foreman	Jeff Snyder	Location	2		

Depth (Feet)	Recovery (% or inches)	PID every 6"	Visual Description	Sample No.	Comments
5	43"	0.4	9" Sand	RWT-SS-02-05 0-1' 10:18	
		0	23" Brick		
		0	12" Sand Gravel Mix		
		0			
10	43"	0	Brick 2", Coarse Gravel, Sand, Rock Mixture	RWT-SS-02-10 7-8' 10:20	
		0			
		0.3			
		0			
15	24"	0	Brown Sandy Silt with Gravel	RWT-SS-02-15 13-15' 10:32 Duplicate Sample RWT-SS-02-15A	
		0	Refusal at 13'		

Depth to Groundwater: _____

Backfill Type: _____

Cuttings _____

Monitoring Well Installed? NO

Monitoring Well ID: _____

Location surveyed? Yes

GPS



GEOPROBE Soil Boring Log

Job Name	Readburn Wood Tar	Boring No.	3	Logged By	
Job No.	TO-0009-0014	Page	1 of 1	J. Siegel	
Date Drilled	7/30/2008	Boring Method/ Sample Method	Geoprobe / Macrocore 5-ft		
Drilling Co.	Zebra Environment	Completion Depth	15 Feet		
Drill Foreman	Jeff Snyder	Location	3		

Depth (Feet)	Recovery (% or inches)	PID every 6"	Visual Description	Sample No.	Comments
5	43"	0.1	8" Brown Sand	RWT-SS-03-05 3-5' 15:51	
		0.3	6" Black Ash, Sand		
		0.3	14" Sand, Gravel, Rock Some Ash and Brick		
		0.3			
10	37"	0	5" Greenish Sand Over	RWT-SS-03-10 7-8' 16:00	
		0.1	Sand, Gravel, Rock Mixture		
		0.1			
		0			
15	46"	0	14" Gravel Over	RWT-SS-03-15 11.5 - 13.5' 16:10	
		1.4	12" Sand, Gravel Over		
		0.7	20" Medium Sand		
			Slight Mild Odor		

Depth to Groundwater:		Backfill Type:	Cuttings
Monitoring Well Installed?	NO		
Monitoring Well ID:			
Location surveyed?	Yes	GPS	



GEOPROBE Soil Boring Log

Job Name Readburn Wood Tar		Boring No. 4	Logged By
Job No. TO-0009-0014		Page 1 of 1	J. Siegel
Date Drilled 7/30/2008	Boring Method/ Sample Method Geoprobe / Macrocore 5-ft		
Drilling Co. Zebra Environment	Completion Depth 15 Feet		
Drill Foreman Jeff Snyder	Location 4		

Depth (Feet)	Recovery (% or inches)	PID every 6"	Visual Description	Sample No.	Comments
5	39"	0	8" Brick	RWT-SS-04-05 3-4' 9:50	
		0.5	10" Fine Sand		
		0.5	15" Black Sand and Gravel		
		0	7" Brown Silty Sand Gravel		
10	38"	0.6	Sand Gravel Mix	RWT-SS-04-10 8-10' 9:58	
		0	Wet at 7'		
		0	Rock Mixture		
		1			
15	46"	0	Gravel Sand Mix	RWT-SS-04-15 12-13' 10:08	
		0	1" Dense Sand/Silt		
		0.4	Gravel at Base		
		0			

Depth to Groundwater: _____

Backfill Type: _____

Cuttings

Monitoring Well Installed? NO

Monitoring Well ID: _____

Location surveyed? Yes

GPS



GEOPROBE Soil Boring Log

Job Name	Readburn Wood Tar	Boring No.	5	Logged By	
Job No.	TO-0009-0014	Page	1 of 1	J. Siegel	
Date Drilled	7/30/2008	Boring Method/ Sample Method	Geoprobe / Macrocore 5-ft		
Drilling Co.	Zebra Environment	Completion Depth	15 Feet		
Drill Foreman	Jeff Snyder	Location	5		

Depth (Feet)	Recovery (% or inches)	PID every 6"	Visual Description	Sample No.	Comments
5	46"	0	10" Orange Mortar Over	RWT-SS-05-05 3-5' 14:27	
		0	6" Wood Tar		
		0.3	7" Orange Black Mortar/Sand, Black Coal, Sand, Ash		
		5			
10	33"	6.6	8" Black Coal Tar Over	RWT-SS-05-10 5-6' 14:37	Sampled Coal Tar
		11	Rock, Sand, Gravel		
		7	Strong Odor		
		.			
15	48"	3.3	Grey-Brown Gravel Sand, Silt Mixture	RWT-SS-05-15 13' 14:50	
		2.8			
		2.3			
		2			

Depth to Groundwater:		Backfill Type:	Cuttings
Monitoring Well Installed?	NO		
Monitoring Well ID:			
Location surveyed?	Yes	GPS	



GEOPROBE Soil Boring Log

Job Name	Readburn Wood Tar	Boring No.	6	Logged By	
Job No.	TO-0009-0014	Page	1 of 1	J. Siegel	
Date Drilled	7/30/2008	Boring Method/ Sample Method	Geoprobe / Macrocore 5-ft		
Drilling Co.	Zebra Environment	Completion Depth	15 Feet		
Drill Foreman	Jeff Snyder	Location	6		

Depth (Feet)	Recovery (% or inches)	PID every 6"	Visual Description	Sample No.	Comments
5	44"	0	19" Black Sand and Ash Residue Over	RWT-SS-06-05 1-1.5' 13:32 MS/MSD	
		0	Broken Rock/Gravel		
		0			
		0			
		0			
10	41"	0	2" Black Sand Over	RWT-SS-06-10 8-10' 13:38	
		0	Broken Gravel		
		0	Bottom 8" is Dense Silty Sand (Sampled)		
		0			
		0			
15	33"	0	8" Coarse Gravel Over	RWT-SS-06-15 13-14' 13:56	
		0	Very Fine Silty Sand		
		0			
		0			
		0			

Depth to Groundwater: _____

Backfill Type:

Cuttings

Monitoring Well Installed? NO

Monitoring Well ID: _____

Location surveyed? Yes

GPS



GEOPROBE Soil Boring Log

Job Name Readburn Wood Tar		Boring No. 7	Logged By
Job No. TO-0009-0014		Page 1 of 1	J. Siegel
Date Drilled 7/30/2008	Boring Method/ Sample Method Geoprobe / Macrocore 5-ft		
Drilling Co. Zebra Environment	Completion Depth 15 Feet		
Drill Foreman Jeff Snyder	Location 7		

Depth (Feet)	Recovery (% or inches)	PID every 6"	Visual Description	Sample No.	Comments
5	27"	0	4" Topsoil Over	RWT-SS-07-05 3.5-4.5' 14:00	
		0	8" Orange Mortar Over		
		0	Black & Orange Sand/Gravel		
		0			
		0			
10	35"	0	Sand/Silt/Gravel Mix	RWT-SS-09-10 8-10' 14:05	
		0			
		0	1' Base is Silty		
		0	Gravelly Sand (Sample)		
		0			
15	37"	0	Sand, Silt, Gravel Over	RWT-SS-09-15 13-15' 14:14	
		0	1' Gray Over		
		0	Medium Sand Gray		
		0			
		0			

Depth to Groundwater: _____	Backfill Type: _____	Cuttings
Monitoring Well Installed? NO		
Monitoring Well ID: _____		
Location surveyed? Yes	GPS	



GEOPROBE Soil Boring Log

Job Name	Readburn Wood Tar	Boring No.	8	Logged By	
Job No.	TO-0009-0014	Page	1 of 1	S. Richards	
Date Drilled	7/30/2008	Boring Method/ Sample Method	Geoprobe / Macrocore 5-ft		
Drilling Co.	Zebra Environment	Completion Depth	15 Feet		
Drill Foreman	Jeff Snyder	Location	9		

Depth (Feet)	Recovery (% or inches)	PID every 6"	Visual Description	Sample No.	Comments
5	24"	0.5	Rock at 2" - Concrete	RWT-SS-08-05 2-3' 12:05 MS/MSD	
		0.3	Rock		
		0.5	Clay Sand		
		0.3	Rock		
10	40"	0	Dark Brown Clay Sand (1' - 2')	RWT-SS-08-10 5-7' 12:15	
		0.1	Rocky Soil		
		0.3	Clay with Coarse Grain Sand		
		0.4	Red Rock		
15	24"	0	Wet Clay Sand	RWT-SS-08-15 13-15' 12:34	
		0	Rocks		
		0	Clay Sand		
		0.1			

Depth to Groundwater:		Backfill Type:	Cuttings
Monitoring Well Installed?	NO		
Monitoring Well ID:			
Location surveyed?	Yes	GPS	



GEOPROBE Soil Boring Log

Job Name	Readburn Wood Tar	Boring No.	9	Logged By	J. Siegel
Job No.	TO-0009-0014	Page	1 of 1		

Date Drilled	7/30/2008	Boring Method/ Sample Method	Geoprobe / Macrocore	5-ft
Drilling Co.	Zebra Environment	Completion Depth	15 Feet	
Drill Foreman	Jeff Snyder	Location	9	

Depth (Feet)	Recovery (% or inches)	PID every 6"	Visual Description	Sample No.	Comments
5	44"	0.1	Brown Rock Gravel Sand Over	RWT-SS-09-05 3-5' 8:31	Max PID Reading 75
		0.1	2" Black Coal Tar/Wood		
		32			
		29			
10	45"	36	11" Black Coal Tar/Wood Over	RWT-SS-09-10 7-8' 8:44	
		30	8" Brown Clay Transition Over		
		20	Gravel and Sand		
		6	Wet at 9'		
15	34"	0.1	Sand, Gravel Some Silt	RWT-SS-09-15 12-13' 8:55	
		0.1			
		0.1			
		0.1			

Depth to Groundwater:		Backfill Type:	Cuttings
Monitoring Well Installed?	NO		
Monitoring Well ID:			
Location surveyed?	Yes	GPS	



GEOPROBE Soil Boring Log

Job Name Readburn Wood Tar Boring No. 10 Logged By
Job No. TO-0009-0014 Page 1 of 1 J. Siegel

Date Drilled 7/30/2008 Boring Method/ Sample Method Geoprobe / Macrocore 5-ft
Drilling Co. Zebra Environment Completion Depth 15 Feet
Drill Foreman Jeff Snyder Location 10

Depth (Feet)	Recovery (% or inches)	PID every 6"	Visual Description	Sample No.	Comments
5	41"	0	12" Brick Ash Residue 5" Orange	RWT-SS-10-05 2-3' 9:15	
		0.5	Black Clay Over		
		0.5	Gravel Sand Mixture		
		0			
10	40"	0.6	7" Brown Silty Clay Sand	RWT-SS-10-10 7-8' 9:25	
		0			
		0			
		1			
15	30"	0	Gravel Sand Mixture	RWT-SS-10-15 8-10' 9:31	
		0.1	12" Gravelly Silt at Base		
		0.1			
		0.2			

Depth to Groundwater: _____ Backfill Type: Cuttings
Monitoring Well Installed? NO
Monitoring Well ID: _____
Location surveyed? Yes GPS



GEOPROBE Soil Boring Log

Job Name	Readburn Wood Tar	Boring No.	11	Logged By	J. Siegel
Job No.	TO-0009-0014	Page	1 of 1		
Date Drilled	7/28/2008	Boring Method/ Sample Method	Geoprobe / Macrocore 5-ft		
Drilling Co.	Zebra Environment	Completion Depth	15 Feet		
Drill Foreman	Jeff Snyder	Location	11		

Depth (Feet)	Recovery (% or inches)	PID every 6"	Visual Description	Sample No.	Comments
0		0	4" Brown Topsoil Over	RWT-SS-11-05 2-4' 7:50	
0		0	Black Sand and Gravel		
0	25"	0	No Odor		
0		0			
0		0			
5		0			
0		0	15" Gravel Brick, Sand Over	RWT-SS-11-10 8-10' 7:58	
0		0	11" Black Wet Gravel Over		
0.3	34"	0.3	Brown Sandy Silt		
0.3		0.3	Slight Odor at Bottom		
10					
0		0	Brown Sand, Silt Sand	RWT-SS-11-15 13-15' 8:09 MS/MSD	
0		0	Slight Odor		
0.1	42"	0.1			
0.1		0.1			
0.1		0.1			
15					

Depth to Groundwater: _____

Backfill Type:

Cuttings

Monitoring Well Installed? NO

Monitoring Well ID: _____

Location surveyed? Yes

GPS



GEOPROBE Soil Boring Log

Job Name	Readburn Wood Tar	Boring No.	12	Logged By	J. Siegel
Job No.	TO-0009-0014	Page	1 of 1		
Date Drilled	7/29/2008	Boring Method/ Sample Method	Geoprobe / Macrocore 5-ft		
Drilling Co.	Zebra Environment	Completion Depth	11 Feet		
Drill Foreman	Jeff Snyder	Location	12		

Depth (Feet)	Recovery (% or inches)	PID every 6"	Visual Description	Sample No.	Comments
5	56"	40	Black Coal Tar/ Wood Tar	RWT-SS-13-05 4-5' 14:40	
		233	Strong Charcoal/Tar Odor		
		73			
		125			
10	42"	55	17" Wood Tar Over	RWT-SS-13-10 8-10' 14:55	
		55	Sand/Gravel		
		32	Soil Below Has Odor		
		30			
15			Refusal at 11'		

Depth to Groundwater:		Backfill Type:	Cuttings
Monitoring Well Installed?	NO		
Monitoring Well ID:			
Location surveyed?	Yes	GPS	



GEOPROBE Soil Boring Log

Job Name	Readburn Wood Tar	Boring No.	13	Logged By	
Job No.	TO-0009-0014	Page	1 of 1	J. Siegel	
Date Drilled	7/28/2008	Boring Method/ Sample Method	Geoprobe / Macrocore 5-ft		
Drilling Co.	Zebra Environment	Completion Depth	15 Feet		
Drill Foreman	Jeff Snyder	Location	13		

Depth (Feet)	Recovery (% or inches)	PID every 6"	Visual Description	Sample No.	Comments
0		0	10" Black Sand and Gravel Over	RWT-SS-13-05 1-3' 12:10	
0		0	1' Black/Orange Sand and Soft Black Material Over		
0	38"	0	Medium Sand with Coarse Gravel		
0		0			
0		0			
5		0			
0		0	Medium Sand, Medium-Coarse Gravel	RWT-SS-13-10 4-6' 12:18	
0		0	Grey/ Reddish Brown Sand and Gravel		
0	47"	0			
0		0			
0		0			
10		0			
0		0	Wet at 10'	RWT-SS-13-15 13-14' 12:28	
0		0	Brown Sand and Gravel		
0	33"	0	6" Base All Rock		
0		0			
0		0			
15		0			

Depth to Groundwater:		Backfill Type:	Cuttings
Monitoring Well Installed?	NO		
Monitoring Well ID:			
Location surveyed?	Yes	GPS	



GEOPROBE Soil Boring Log

Job Name Readburn Wood Tar		Boring No. 14	Logged By
Job No. TO-0009-0014		Page 1 of 1	J. Siegel
Date Drilled 7/29/2008	Boring Method/ Sample Method Geoprobe / Macrocore 5-ft		
Drilling Co. Zebra Environment	Completion Depth 15 Feet		
Drill Foreman Jeff Snyder	Location 14		

Depth (Feet)	Recovery (% or Inches)	PID every 6"	Visual Description	Sample No.	Comments
5	20"	0	Gravel Sand Mixture	RWT-SS-14-05 2-3' 10:18	
		0			
		0			
		0			
		0			
10	41"	0	Gravel, Concrete	RWT-SS-14-10 9-10' 10:28	
		0	Sand, Some Silt		
		0			
		0			
		0			
15	56"	0	Sand, Silt, Gravel, Concrete	RWT-SS-14-15 12-13' 10:45	
		0			
		0			
		0			
		0			

Depth to Groundwater: _____
Monitoring Well Installed? NO
Monitoring Well ID: _____
Location surveyed? Yes

Backfill Type: Cuttings

GPS



GEOPROBE Soil Boring Log

Job Name Readburn Wood Tar Boring No. 15 Logged By
Job No. TO-0009-0014 Page 1 of 1 J. Siegel

Date Drilled 7/28/2008 Boring Method/ Sample Method Geoprobe / Macrocore 5-ft
Drilling Co. Zebra Environment Completion Depth 15 Feet
Drill Foreman Jeff Snyder Location 15

Depth (Feet)	Recovery (% or inches)	PID every 6"	Visual Description	Sample No.	Comments
5	35"	0	17" Black coarse Sand, Medium to Coarse Gravel	RWT-SS-15-04 1-2' 11:32	
		0	25" Sand, Concrete-Fill		
		0			
		0			
		0			
10	48"	0	3' Sand Gravel Coarse Over	RWT-SS-15-08 4-6' 11:43	
		0	Dense Brown Silt Clay, Silty Sand		
		0		RWT-SS-15-12 6-10' 11:50	
		0			
		0			
15	50"	0	Medium Brown Sand/Silt Interbedded with Concrete Fill	RWT-SS-15-15 13-15' 11:57	
		0	Very Moist at 14'		
		0			
		0			
		0			

Depth to Groundwater: _____ Backfill Type: Cuttings
Monitoring Well Installed? NO
Monitoring Well ID: _____
Location surveyed? Yes GPS



GEOPROBE Soil Boring Log

Job Name	Readburn Wood Tar	Boring No.	16	Logged By	J. Siegel
Job No.	TO-0009-0014	Page	1 of 1		
Date Drilled	7/28/2008	Boring Method/ Sample Method	Geoprobe / Macrocore 5-ft		
Drilling Co.	Zebra Environment	Completion Depth	15 Feet		
Drill Foreman	Jeff Snyder	Location	16		

Depth (Feet)	Recovery (% or inches)	PID every 6"	Visual Description	Sample No.	Comments
5	39"	0	26" Black Clay, Sandy Silt over	RWT-SS-16-05 2-4' 12:36	
		0	13" Rock		
		0			
		0			
		0			
10	40"	0	Alternating Sand, Medium-Coarse Gravel, Sandy Silt	RWT-SS-16-10 8-10' 12:45	
		0			
		0			
		0			
		0			
15	58"	0	Wet at 12.5'	RWT-SS-16-15 13-15' 12:56	
		0	Brown Sand and Grey Rock Over		
		0	Silty Sand Over		
		0	Wet Sandy Silt and Gravel		
		0			

Depth to Groundwater:		Backfill Type:	Cuttings
Monitoring Well Installed?	NO		
Monitoring Well ID:			
Location surveyed?	Yes	GPS	



GEOPROBE Soil Boring Log

Job Name	Readburn Wood Tar	Boring No.	17	Logged By	
Job No.	TO-0009-0014	Page	1 of 1	J. Siegel	
Date Drilled	7/29/2008	Boring Method/ Sample Method	Geoprobe / Macrocore 5-ft		
Drilling Co.	Zebra Environment	Completion Depth	15 Feet		
Drill Foreman	Jeff Snyder	Location	17		

Depth (Feet)	Recovery (% or inches)	PID every 6"	Visual Description	Sample No.	Comments
5	20"	0	Medium Sand Over	RWT-SS-17-05 4-5' 8:07	
		0	Black/White Sand with Fine Gravel		
		0			
		0			
		0			
10	41"	0	Gravel, Sand, Rock Mixture	RWT-SS-17-10 6-7' 8:26 RWT-SS-17-10A (Duplicate)	
		0			
		0			
		0			
		0			
15	52"	0	Wet at 10'	RWT-SS-17-15 14-15' 8:35 RWT-SS-17-15A (Duplicate)	
		0	Grey Gravel/Sand Silt Mixture		
		0			
		0			
		0			

Depth to Groundwater:		Backfill Type:	Cuttings
Monitoring Well Installed?	NO		
Monitoring Well ID:			
Location surveyed?	Yes	GPS	



GEOPROBE Soil Boring Log

Job Name	Readburn Wood Tar	Boring No.	18	Logged By	J. Siegel
Job No.	TO-0009-0014	Page	1 of 1		
Date Drilled	7/29/2008	Boring Method/ Sample Method	Geoprobe / Macrocore 5-ft		
Drilling Co.	Zebra Environment	Completion Depth	15 Feet		
Drill Foreman	Jeff Snyder	Location	18		

Depth (Feet)	Recovery (%) or inches)	PID every 6"	Visual Description	Sample No.	Comments
5	38"	0	Gravel, Sand Rock Mixture	RWT-SS-18-05 3-4' 9:06	
		0			
		0			
		0			
		0			
10	36"	0	Rock, Sand, Silt, Gravel Mixture	RWT-SS-18-10 8-10' 9:27	
		0			
		0			
		0			
		0			
15			Wet at 12'	RWT-SS-18-15 13-14' 9:37	
			Rock, Sand, Silt Mixture		

Depth to Groundwater:		Backfill Type:	Cuttings
Monitoring Well Installed?	NO		
Monitoring Well ID:			
Location surveyed?	Yes	GPS	



GEOPROBE Soil Boring Log

Job Name	Readburn Wood Tar	Boring No.	19	Logged By	
Job No.	TO-0009-0014	Page	1 of 1	J. Siegel	
Date Drilled	7/28/2008	Boring Method/ Sample Method	Geoprobe / Macrocore 5-ft		
Drilling Co.	Zebra Environment	Completion Depth	15 Feet		
Drill Foreman	Jeff Snyder	Location	19		

Depth (Feet)	Recovery (% or inches)	PID every 6"	Visual Description	Sample No.	Comments
5	39"	0	14" Sand Black, Brown Over	RWT-SS-19-05 1-3' 13:09	
		0	Gravel, Rock		
		0			
		0			
		0			
10	42"	0	Gravel (medium - coarse) and Medium Sand Interbedded Rock at bottom 10"	RWT-SS-19-10 6-8' 13:17	
		0			
		0			
		0			
		0			
15	57"	0	Wet at 13.5'	RWT-SS-19-15 12.5-13.5' 13:30	
		0	20" Brown Dense Silty Sand with Medium to Coarse Gravel		
		0	10" Rock Over		
		0	Gravel Sand Mixture		
		0			

Depth to Groundwater:		Backfill Type:	Cuttings
Monitoring Well Installed?	NO		
Monitoring Well ID:			
Location surveyed?	Yes	GPS	



GEOPROBE Soil Boring Log

Job Name Readburn Wood Tar		Boring No. 20	Logged By
Job No. TO-0009-0014		Page <u>1</u> of <u>1</u>	J. Siegel
Date Drilled 7/29/2008	Boring Method/ Sample Method Geoprobe / Macrocore 5-ft		
Drilling Co. Zebra Environment	Completion Depth 15 Feet		
Drill Foreman Jeff Snyder	Location 20		

Depth (Feet)	Recovery (% or inches)	PID every 6"	Visual Description	Sample No.	Comments
5	20"	0	Black/Brown Sand and Gravel Mixture	RWT-SS-20-05 1-3' 12:10	
		0			
		0			
		0			
		0			
10	33"	0	Sand, Gravel, Some Silt Mixture	RWT-SS-20-10 8-10' 12:20	
		0			
		0			
		0			
		0			
15	18"	0	Brown Sand/ Silt/ Gravel	RWT-SS-20-15 13-14' 12:30	
		0			
		0			
		0			
		0			

Depth to Groundwater: _____	Backfill Type: _____	Cuttings
Monitoring Well Installed? NO		
Monitoring Well ID: _____		
Location surveyed? Yes	GPS	



GEOPROBE Soil Boring Log

Job Name	Readburn Wood Tar	Boring No.	21	Logged By	
Job No.	TO-0009-0014	Page	1 of 1	J. Siegel	

Date Drilled	7/29/2008	Boring Method/ Sample Method	Geoprobe / Macrocore	5-ft
Drilling Co.	Zebra Environment	Completion Depth	15 Feet	
Drill Foreman	Jeff Snyder	Location	21	

Depth (Feet)	Recovery (% or inches)	PID every 6"	Visual Description	Sample No.	Comments
5	28"	0	Brown and Black Silty Sand Over	RWT-SS-21-05 1-3' 13:20 MS/MSD	
		0	Coarse Gravel		
		0			
		0			
		0			
10	38"	0	Brown and Grey Sand, Silt, Gravel Mixture	RWT-SS-21-10 8-10' 13:30	
		0			
		0			
		0			
		0			
15	25"	0	Brown Sand, Gravel, Some Silt	RWT-SS-21-15 13-15' 13:40 RWT-SS-21-15A 13-15' 13:50	
		0			
		0			
		0			
		0			

Depth to Groundwater: _____

Backfill Type:

Cuttings

Monitoring Well Installed? NO

Monitoring Well ID: _____

Location surveyed? Yes

GPS



GEOPROBE Soil Boring Log

Job Name Readburn Wood Tar Boring No. 22 Logged By
Job No. TO-0009-0014 Page 1 of 1 J. Siegel

Date Drilled 7/29/2008 Boring Method/ Sample Method Geoprobe / Macrocore 5-ft
Drilling Co. Zebra Environment Completion Depth 15 Feet
Drill Foreman Jeff Snyder Location 22

Depth (Feet)	Recovery (% or inches)	PID every 6"	Visual Description	Sample No.	Comments
5	28"	0	Orange Gravel and Sand Mixture	RWT-SS-22-05 3-5' 9:58 MS/MSD	
		0			
		0			
		0			
		0			
10			No Recovery		
15	32"	0	Wet	RWT-SS-22-15 11-12' 10:05	
		0	Grey Sand and Gravel Mixture, Some Silt		
		0	Refusal at 13'		
		0			
		0			

Depth to Groundwater: _____

Backfill Type:

Cuttings

Monitoring Well Installed? NO

Monitoring Well ID: _____

Location surveyed? Yes

GPS



GEOPROBE Soil Boring Log

Job Name Readburn Wood Tar Boring No. 23 Logged By
Job No. TO-0009-0014 Page 1 of 1 J. Siegel

Date Drilled 7/29/2008 Boring Method/ Sample Method Geoprobe / Macrocore 5-ft
Drilling Co. Zebra Environment Completion Depth 15 Feet
Drill Foreman Jeff Snyder Location 23

Depth (Feet)	Recovery (%) or Inches)	PID every 6"	Visual Description	Sample No.	Comments
5	31"	0	19" Brown/Black Sand Silt Gravel Over	RWT-SS-23-05 2-3' 11:35	
		0	Gravel Sand Mixture		
		0	6" Rock at base		
		0			
		0			
10	33"	0	Gravel Sand Rock Mixture	RWT-SS-23-10 7-8' 11:49	
		0			
		0			
		0			
		0			
15	40"	0	Sand, Gravel, Rock Mixture	RWT-SS-23-15 13-14' 11:56	
		0			
		0			
		0			
		0			

Depth to Groundwater: _____

Backfill Type:

Cuttings

Monitoring Well Installed? NO

Monitoring Well ID: _____

Location surveyed? Yes

GPS



GEOPROBE Soil Boring Log

Job Name	Readburn Wood Tar	Boring No.	24	Logged By	
Job No.	TO-0009-0014	Page	1 of 1	J. Siegel	
Date Drilled	7/29/2008	Boring Method/ Sample Method	Geoprobe / Macrocore 5-ft		
Drilling Co.	Zebra Environment	Completion Depth	15 Feet		
Drill Foreman	Jeff Snyder	Location	24		

Depth (Feet)	Recovery (% or inches)	PID every 6"	Visual Description	Sample No.	Comments
5	36"	0	Sand, Gravel, Rock Mixture	RWT-SS-24-05 3-4' 7:33	
		0			
		0			
		0			
		0			
10	50"	0	Sand and Medium-Coarse Gravel Mixture Interbedded	RWT-SS-24-10 8-9' 7:42	
		0	Wet at 9.5'		
		0			
		0			
		0			
15	36"	0	Tight Silty Sand with Medium-Coarse Gravel Medium-Brown	RWT-SS-24-15 12-14' 7:51	
		0	Very Dense		
		0			
		0			
		0			

Depth to Groundwater:	_____	Backfill Type:	Cuttings
Monitoring Well Installed?	NO		
Monitoring Well ID:	_____		
Location surveyed?	Yes	GPS	



GEOPROBE Soil Boring Log

Job Name Readburn Wood Tar Boring No. 25 Logged By
Job No. TO-0009-0014 Page 1 of 1 J. Siegel

Date Drilled 7/28/2008 Boring Method/ Sample Method Geoprobe / Macrocore 5-ft
Drilling Co. Zebra Environment Completion Depth 15 Feet
Drill Foreman Jeff Snyder Location 25

Depth (Feet)	Recovery (% or inches)	PID every 6"	Visual Description	Sample No.	Comments
5	34"	0	1.5' Brown, Medium Sand Over	RWT-SS-25-05 1-3' 13:38	
		0	Sand and Gravel Mixture		
		0			
		0			
		0			
10	49"	0	Grey Medium Sand, Some Silt with Medium-Coarse Gravel	RWT-SS-25-10 7-9' 13:51	
		0			
		0			
		0			
		0			
15	30"	0	Brown Sand and Gravel	RWT-SS-25-15 11-13' 14:33	
		0	Bottom 14" is All Rock		
		0	Refusal at 13'		
		0			
		0			

Depth to Groundwater: _____ Backfill Type: Cuttings
Monitoring Well Installed? NO
Monitoring Well ID: _____
Location surveyed? Yes GPS



GEOPROBE Soil Boring Log

Job Name Readburn Wood Tar		Boring No. 26	Logged By
Job No. TO-0009-0014		Page <u>1</u> of <u>1</u>	J. Siegel
Date Drilled 7/29/2008	Boring Method/ Sample Method Geoprobe / Macrocore 5-ft		
Drilling Co. Zebra Environment	Completion Depth 15 Feet		
Drill Foreman Jeff Snyder	Location 26		

Depth (Feet)	Recovery (% or inches)	PID every 6"	Visual Description	Sample No.	Comments
5	35"	0	Brown Sand and Gravel	RWT-SS-26-05 3-5' 14:00	
		0			
		0			
		0			
		0			
10	28"	0	Brown Sand, Gravel, Silt, Clay	RWT-SS-26-10 7-8' 14:15	
		0			
		0			
		0			
		0			
15	45"	0	Sand, Silt, Gravel	RWT-SS-26-15 13-14' 14:25 MS/MSD	
		0			
		0			
		0			
		0			

Depth to Groundwater: _____	Backfill Type: _____	Cuttings
Monitoring Well Installed? NO		
Monitoring Well ID: _____		
Location surveyed? Yes	GPS	



GEOPROBE Soil Boring Log

Job Name Readburn Wood Tar		Boring No. 27	Logged By
Job No. TO-0009-0014		Page 1 of 1	J. Siegel
Date Drilled 7/30/2008	Boring Method/ Sample Method Geoprobe / Macrocore 5-ft		
Drilling Co. Zebra Environment	Completion Depth 15 Feet		
Drill Foreman Jeff Snyder	Location 27		

Depth (Feet)	Recovery (% or inches)	PID every 6"	Visual Description	Sample No.	Comments
5	35"	0.6	Gravel, Sand, Rock, Burnt Wood, Mortar	RWT-SS-27-05 3-4' 15:11	
		0.7			
		0.8			
		0.7			
		0.7			
10	31"	0.3	Gravel, Sand, Coal, Burnt Wood	RWT-SS-27-10 7-8' 15:30	
		0.3			
		0.4			
		0.1			
15	36"	0	Sand, Gravel, Silt, Sand	RWT-SS-27-15 12-13' 15:41	
		0			
		0			
		0			
		0			
		0			

Depth to Groundwater: _____	Backfill Type: _____	Cuttings
Monitoring Well Installed? NO		
Monitoring Well ID: _____		
Location surveyed? Yes	GPS	



GEOPROBE Soil Boring Log

Job Name		Boring No. <u>1</u>		Logged By	
Job No.		Page <u> </u> of <u> </u>			
Date Drilled		Boring Method/ Sample Method		Geoprobe / Macrocore 4-ft <u>5-ft</u>	
Drilling Co.		Completion Depth			
Drill Foreman		Location <u>1</u>			

Depth (Feet)	Recovery (%) or (Inches)	PID every 6"	Visual Description	Sample No.	Comments
25'	0		Sample 13		Sample
	0		Predominantly Brk		4-5
	0.4		1' Rock & Sand & clay		10:50
5'	5.0	7.0	Brk 2" med SAR		Sample
	1.6		Gravel, sand		5-6'
	1.0		Gravel mix		cast SAR
			Gravel SAR approx 1' deep		& 95H
10'	42	43	Sample has solid odor		11:03
	43		2" C gravel		Sample
	1		sand, silt		13-15
	1		Very silty rocky sand		11:14
15'	1		odor		11:14
					Duplicate Sample

Depth to Groundwater: <u> </u>		Backfill Type: <u>Cuttings</u> Cuttings/Bentonite Bentonite	
Monitoring Well Installed? YES NO		Asphalt / Concrete	
Monitoring Well ID: <u> </u>			
Location surveyed? Yes No		GPS Surveyor Other	



GEOPROBE Soil Boring Log

Job Name		Boring No. <u>2</u>	Logged By
Job No.		Page <u> </u> of <u> </u>	
Date Drilled <u>7-13-10</u>	Boring Method/ Sample Method		Geoprobe / Macrocore 4-ft 5-ft
Drilling Co.	Completion Depth		
Drill Foreman	Location <u>2</u>		

Depth (Feet)	Recovery (%) or Inches	PID every 6"	Visual Description	Sample No.	Comments
0	100	0	9" sand		sample
1	100	0	23" brick		0-1
2	100	0	12" sand gravel mix		10:14
3	100	0			
4	100	0			
5	100	0	Brick, C gravel		sample
6	100	0	sand, rock mix		7-8
7	100	0.3			10:20
8	100	0			
9	100	0			
10	100	0	Brick / gravel 1.1'		sample
11	100	0	and gravel		13-15
12	100	0			10:32
13	100	0	Material @ 13'		sample
14	100	0			10:41
15	100	0			
16	100	0			
17	100	0			
18	100	0			
19	100	0			
20	100	0			

Depth to Groundwater: <u> </u>	Backfill Type: Cuttings Cuttings/Bentonite Bentonite
Monitoring Well Installed? YES NO	Asphalt / Concrete
Monitoring Well ID: <u> </u>	
Location surveyed? Yes No GPS Surveyor Other	



GEOPROBE Soil Boring Log

Job Name	Readburn Wood Tar	Boring No.		Logged By J. Siegel
Job No.		Page	1	1
Date Drilled	4/30/14	Boring Method/ Sample Method	3	Geoprobe / Macrocore 4-ft 5-ft
Drilling Co.	Zebra	Completion Depth	3	
Drill Foreman		Location	3	

Depth (Feet)	Recovery (% or inches)	PID every 6"	Visual Description	Sample No.	Comments
1	43	0.1	8" Brown sand		samples
2	0.3		6" Black Ash sand		35
3	0.3		14" Sand, gravel, Rock,		1551
4	0.3		some ss & brick		
5	37	0	5" greenish sand		samples
6	0.1		over sand, gravel		2 & 1
7	6.1		Rock mixture		16:00
8	0				
9	46	0	14" gravel over		16.5-13.5
10	1.4		12" sand, gravel over		
11	0.7		20" red sand		1610
12			sd. m. id. odor		
13					
14					
15					

Depth to Groundwater:	_____	Backfill Type: Cuttings	Cuttings/Bentonite	Bentonite
Monitoring Well Installed?	YES NO		Asphalt / Concrete	
Monitoring Well ID:	_____			
Location surveyed?	Yes No	GPS Surveyor	Other	

GEOPROBE Soil Boring Log

[illegible]



GEOPROBE Soil Boring Log

Job Name Readburn Wood Tar		Boring No. 7	Logged By J. Siegel
Job No.		Page 1 1	
Date Drilled 7/30/08	Boring Method/ Sample Method Geoprobe / Macrocore 4-ft 5-ft		
Drilling Co. Zebra	Completion Depth 7		
Drill Foreman	Location		

Depth (Feet)	Recovery (% or inches)	PID every 6"	Visual Description	Sample No.	Comments
1	70	6	4" riprap over		3.5 - 4.5
2			8" orange "bottle"		1400
3			over black wavy		(white orange)
4			sand / gravel		
5	70	10	sand / silt / gravel		sample
6			mix		8-10
7			1' down is silty		1465
8			gravelly sand - (sample)		
9	70	10	sand silt gravel over		sample
10			1 foot grey clay		13-15
11			medium sand grey		1414
12					
13					
14					
15					

Depth to Groundwater:	Backfill Type: Cuttings	Cuttings/Bentonite	Bentonite
Monitoring Well Installed? YES NO	Asphalt / Concrete		
Monitoring Well ID:			
Location surveyed? Yes No	GPS Surveyor	Other	



GEOPROBE Soil Boring Log

Job Name Readburn Wood Tar	Boring No. 8	Logged By S. Richards
Job No. TO-0009-0014	Page 1 of 1	
Date Drilled 7/30/08	Boring Method/ Sample Method	Geoprobe / Macrocore 4-ft (5-ft)
Drilling Co. Zebra Enviro.	Completion Depth 15 feet	
Drill Foreman Jeff Snyder	Location	

Depth (Feet)	Recovery (%) or inches)	PID every 6"	Visual Description	Sample No.	Comments
5'		.5	Rock at 2" - concrete	RWT-SS-8- 10 5	12:05
		.3	Rock		
	24"	.5	Clay sand (2'-3') →		
		.3	Rock		
10'		0	Dark brown clay sand (1'-2') →	RWT-SS-8- 10 10	1215
		.1	Rocky soil		
	40"	.3	Clay w/ coarse grain sand		
		.4	Red rock		
15'		0	Wet brown clay sand	RWT-SS-8-15	1234
		0	Wet clay sand		
	24"	0	Rocks		
		.1	Clay sand (3'-5') →		

Depth to Groundwater: _____	Backfill Type: Cuttings Cuttings/Bentonite Bentonite
Monitoring Well Installed? YES (NO)	Asphalt / Concrete
Monitoring Well ID: _____	
Location surveyed? Yes No GPS Surveyor Other	



GEOPROBE Soil Boring Log

Job Name		Boring No. <u>10</u>		Logged By	
Job No.		Page <u>10</u> of <u>10</u>			
Date Drilled <u>7/30/08</u>		Boring Method/ Sample Method		Geoprobe / Macrocore 4-ft <u>5-ft</u>	
Drilling Co.		Completion Depth			
Drill Foreman		Location <u>10</u>			

Depth (Feet)	Recovery (%) or inches	PID every 6"	Visual Description	Sample No.	Comments
2.1	4		12" Blk		
2.4	4		ash residue 5" orange		2.3'
2.7	4		little clay over		9115
3.0	4		gravel sand mixture		
4.0	1		2" brown filling		Sample
4.3	1		clay sand		7-8
4.6	4				9125
4.9	1				
5.0	0		Gravel sand mixture		Sample
5.1	1		12" filling		8110
5.4	1		gravelly silt @		9131
5.7	2		bone		
6.0					
6.3					
6.6					
6.9					
7.2					
7.5					
7.8					
8.1					
8.4					
8.7					
9.0					
9.3					
9.6					
9.9					
10.2					
10.5					
10.8					
11.1					
11.4					
11.7					
12.0					

Depth to Groundwater: _____		Backfill Type: Cuttings Cuttings/Bentonite Bentonite	
Monitoring Well Installed? YES NO		Asphalt / Concrete	
Monitoring Well ID: _____			
Location surveyed? Yes No		GPS Surveyor Other	



GEOPROBE Soil Boring Log

Job Name		Boring No. <u>12</u>		Logged By	
Job No.		Page <u>1</u> of <u>1</u>			
Date Drilled		Boring Method/ Sample Method		Geoprobe / Macrocore 4-ft 5-ft	
Drilling Co.		Completion Depth <u>12</u>			
Drill Foreman		Location <u>12</u>			

Depth (Feet)	Recovery (%) or inches	PID every 6"	Visual Description	Sample No.	Comments
5	50	40	Black soil		sample
		223	coal TAR / wood TAR		4-5
		73	100%		1440
		125	strong charcoal		
		125	1 in wood		
		55	17" wood TAR		sample
		32	over sand / gravel		8-10'
		30	soil below this		
			over		1455
			<u>interior at 11'</u>		no
					10-15"
					sample

Depth to Groundwater: _____		Backfill Type: Cuttings Cuttings/Bentonite Bentonite	
Monitoring Well Installed? YES NO		Asphalt / Concrete	
Monitoring Well ID: _____			
Location surveyed? Yes No		GPS Surveyor Other	



GEOPROBE Soil Boring Log

Job Name	Boring No. <u>13</u>	Logged By
Job No.	Page <u> </u> of <u> </u>	

Date Drilled	Boring Method/ Sample Method	Geoprobe / Macrocore 4-ft <u>5-ft</u>
Drilling Co.	Completion Depth	
Drill Foreman	Location	

Depth (Feet)	Recovery (%) or inches	PID every 6"	Visual Description	Sample No.	Comments
0	38	6	10" Black sand & gravel		Sample
1	38	6	over 1' black/orange		1-3
2		0	gravel & soft black material		
3		0	over m sand with		
4		0	coarse sand		12:10
5		0	m sand m-c		Sample
6	47	6	gravel		4-6
7		0	gray/red soil m-c		12:18
8		6			
9		6			
10		6			
11		0	net		
12		0	brown sand and gravel		Sample
13	33	6	10" brown s.s. rock		13-14
14		6			12:28
15					
16					
17					
18					
19					
20					
21					
22					
23					
24					
25					
26					
27					
28					
29					
30					

Depth to Groundwater: _____	Backfill Type: Cuttings Cuttings/Bentonite Bentonite
Monitoring Well Installed? YES NO	Asphalt / Concrete
Monitoring Well ID: _____	
Location surveyed? Yes No	GPS Surveyor Other



GEOPROBE Soil Boring Log

Job Name		Readburn Wood Tar		Boring No.		15		Logged By J. Siegel	
Job No.				Page 1		1			
Date Drilled		7/28/04		Boring Method/ Sample Method		Geoprobe / Macrocore		<input checked="" type="checkbox"/> 2" <input checked="" type="checkbox"/> 3-ft	
Drilling Co.		Zebra		Completion Depth					
Drill Foreman		Jeff Snyder		Location		15			

Depth (Feet)	Recovery (%) or inches	PID every 6"	Visual Description	Sample No.	Comments
1	35"	0	12" Black sand, m-c	15-0-8	sample
2		0	sand		at 1-2'
3		0	25" sand, concrete - fill		Black
4		0			RAM 11:32
5		0	3' Sand gravel layer		sample
6	48"	0	over dense brown		4-6'
7		0	slty sand		6-10
8		0			11:50 11:43
9		0	med Brown sand/clay silt		sample
10	50"	0	interbedded with		13-15'
11		0	concrete fill		
12		0	very moist at 14'		11:57
13					
14					
15					

Depth to Groundwater:	_____	Backfill Type:	Cuttings	Cuttings/Bentonite	Bentonite
Monitoring Well Installed?	YES NO		Asphalt / Concrete		
Monitoring Well ID:	_____				
Location surveyed?	Yes No	GPS	Surveyor	Other	



GEOPROBE Soil Boring Log

Job Name		Boring No. <u>16</u>		Logged By	
Job No.		Page <u>1</u> of <u>1</u>			
Date Drilled		Boring Method/ Sample Method		Geoprobe / Macrocore 4-ft <u>5-ft</u>	
Drilling Co.		Completion Depth			
Drill Foreman		Location <u>16</u>			

Depth (Feet)	Recovery (% or inches)	PID every 6"	Visual Description	Sample No.	Comments
0			26" Black		Sample
1			Clayey sandy silt		2-4
2			over 13" Black		
3					12:16
4					
5					
6					
7					
8					
9					
10					
11					
12					
13					
14					
15					
16					
17					
18					
19					
20					
21					
22					
23					
24					
25					
26					
27					
28					
29					
30					
31					
32					
33					
34					
35					
36					
37					
38					
39					
40					
41					
42					
43					
44					
45					
46					
47					
48					
49					
50					
51					
52					
53					
54					
55					
56					
57					
58					
59					
60					
61					
62					
63					
64					
65					
66					
67					
68					
69					
70					
71					
72					
73					
74					
75					
76					
77					
78					
79					
80					
81					
82					
83					
84					
85					
86					
87					
88					
89					
90					
91					
92					
93					
94					
95					
96					
97					
98					
99					
100					

Depth to Groundwater: _____		Backfill Type: Cuttings Cuttings/Bentonite Bentonite	
Monitoring Well Installed? YES NO		Asphalt / Concrete	
Monitoring Well ID: _____			
Location surveyed? Yes No		GPS Surveyor Other	

GEOPROBE Soil Boring Log

Job Name			Boring No.	Logged By
Job No.			Page ____ of ____	
Date Drilled	Boring Method/ Sample Method	Geoprobe / Macrocore 4-ft 5-ft		
Drilling Co.	Completion Depth			
Drill Foreman	Location			
Depth (Feet)	Recovery (%) or inches	PID every 6"	Visual Description	Sample No.
0			Ground, sand	
3-4			Rock mixture	
9:06				
3-10			Rock, sand, silt	
8-10			sand mixture	
9:27				
met or 12'				
Sample				
13-14				
9:37				

Depth to Groundwater: _____ Backfill Type: Cuttings Cuttings/Bentonite Bentonite

Monitoring Well Installed? YES NO Asphalt / Concrete

Monitoring Well ID: _____

Location surveyed? Yes No GPS Surveyor Other



GEOPROBE Soil Boring Log

Job Name		Boring No. <u>19</u>	Logged By
Job No.		Page <u> </u> of <u> </u>	
Date Drilled	Boring Method/ Sample Method Geoprobe / Macrocore 4-ft 5-ft		
Drilling Co.	Completion Depth		
Drill Foreman	Location <u>19</u>		

Depth (Feet)	Recovery (% or inches)	PID every 6"	Visual Description	Sample No.	Comments
1	38" 0		12" Sand Black Brown		1-3 sample
2			6" gravel, Rock		
3					
4					1309
5					
6	42" 0		Gravel / (m-c)		Sample
7			m sand - interbedded		6-8'
8			Rock at 8.4m		1317
9			10"		
10					
11	57" 0		net at 13.5'		Sample
12			20" Brown dense silty sand		12.5-13.5'
13			4.25 m-c gravel		1330
14			10" Rock		
15			fine sand sand mixture		
16					
17					
18					
19					
20					
21					
22					
23					
24					
25					
26					
27					
28					
29					
30					

Depth to Groundwater: _____	Backfill Type: Cuttings Cuttings/Bentonite Bentonite
Monitoring Well Installed? YES NO	Asphalt / Concrete
Monitoring Well ID: _____	
Location surveyed? Yes No	GPS Surveyor Other



GEOPROBE Soil Boring Log

Job Name		Boring No. 20		Logged By	
Job No.		Page of			
Date Drilled		Boring Method/ Sample Method		Geoprobe / Macrocore 4-ft 5-ft	
Drilling Co.		Completion Depth 20			
Drill Foreman		Location			

Depth (Feet)	Recovery (% or inches)	PID every 6"	Visual Description	Sample No.	Comments
0			Black / Brown		Sample
20"			sand and gravel		1-3
			mix fine		12:10
5					
33"			sand, gravel,		sample
			some silt mix		8-10
					12:20
10					
18"			Drain sand / 5.14 /		sample
			gravel		13-14
					12:30
15					

Depth to Groundwater:		Backfill Type: Cuttings Cuttings/Bentonite Bentonite			
Monitoring Well Installed? YES NO		Asphalt / Concrete			
Monitoring Well ID:					
Location surveyed? Yes No		GPS Surveyor		Other	



GEOPROBE Soil Boring Log

Job Name		Boring No. <u>21</u>		Logged By	
Job No.		Page <u> </u> of <u> </u>			
Date Drilled		Boring Method/ Sample Method		Geoprobe / Macrocore 4-ft 5-ft	
Drilling Co.		Completion Depth			
Drill Foreman		Location <u>21</u>			

Depth (Feet)	Recovery (% or inches)	PID every 6"	Visual Description	Sample No.	Comments
28'	0	6	Brown + Black s. lg sand over coarse gravel		sample 21 1-3 1320 103/150 notch
38'	0	0	brown & gray sand s. lg small pebbles		sample 21 8-10' 1330
48'	0	0	Brown sand, gravel some s. lg		sample 13-15 1340 * Depth All
58'			* →		21 10-15 A 1350

Depth to Groundwater: <u> </u>		Backfill Type: Cuttings Cuttings/Bentonite Bentonite	
Monitoring Well Installed? YES NO		Asphalt / Concrete	
Monitoring Well ID: <u> </u>			
Location surveyed? Yes No		GPS Surveyor Other	



GEOPROBE Soil Boring Log

Job Name	Boring No. 22	Logged By
Job No.	Page ____ of ____	

Date Drilled	Boring Method/ Sample Method Geoprobe / Macrocore 4-ft (5-ft)
Drilling Co.	Completion Depth
Drill Foreman	Location 22

Depth (Feet)	Recovery (% or inches)	PID every 6"	Visual Description	Sample No.	Comments
28'	0		Orange gravel and sand mixture		3-5 m / 100 meters? 958
62'			no Recovery		
32'	0		Reddish @ 13' wet Grey sand & gravel mixture, some silt		5 cap to 11-12 10:05

Depth to Groundwater: _____	Backfill Type: Cuttings Cuttings/Bentonite Bentonite
Monitoring Well Installed? YES NO	Asphalt / Concrete
Monitoring Well ID: _____	
Location surveyed? Yes No	GPS Surveyor Other

Fig 7720 DT



GEOPROBE Soil Boring Log

Job Name <u>Redburn TIA Wood</u>		Boring No. <u>23</u>	Logged By <u>J. Page 1</u>
Job No. <u>20401051-009-2013</u>		Page <u>1</u> of <u>1</u>	
Date Drilled <u>7/27/08</u>		Boring Method/ Sample Method <u>Geoprobe / Macrocore</u> 4-ft <u>(5-ft)</u>	
Drilling Co.		Completion Depth	
Drill Foreman		Location <u>23</u>	

Depth (Feet)	Recovery (%) or Inches	PID every 6"	Visual Description	Sample No.	Comments
31.0			19" Brown / Black sand s.s. sand over gravel sand mixture		Sample 2-3 1135
33.0			6" Rock 6" down gravel sand Rock mixture		Sample 7-8 1147
40.0			Sand Gravel, Rock mixture		Sample 13-14 1156
45.0					
50.0					
55.0					
60.0					
65.0					
70.0					
75.0					
80.0					
85.0					
90.0					
95.0					
100.0					

Depth to Groundwater: _____	Backfill Type: <u>Cuttings</u> Cuttings/Bentonite Bentonite
Monitoring Well Installed? YES <u>NO</u>	Asphalt / Concrete
Monitoring Well ID: _____	
Location surveyed? <u>Yes</u> No <u>GPS</u> Surveyor Other	



GEOPROBE Soil Boring Log

Job Name		Boring No. 24		Logged By	
Job No.		Page ____ of ____			
Date Drilled 7/20/08		Boring Method/ Sample Method		Geoprobe / Macrocore 4-ft 8-ft	
Drilling Co.		Completion Depth 24			
Drill Foreman		Location			

Depth (Feet)	Recovery (% or inches)	PID every 6"	Visual Description	Sample No.	Comments
36'	0		sand gravel rock mixture		3-41 7:33
50'			sand, m-c gravel mixture - interbedded mat at 9.5'		8-9 9:42
36"			light silty sand with m-c gravel med-brk very dense		16-19 7:51
15'					

Depth to Groundwater: _____		Backfill Type: Cuttings Cuttings/Bentonite Bentonite	
Monitoring Well Installed? YES NO		Asphalt / Concrete	
Monitoring Well ID: _____			
Location surveyed? Yes No		GPS Surveyor Other	



GEOPROBE Soil Boring Log

Job Name	Boring No. 25	Logged By
Job No.	Page ____ of ____	

Date Drilled	Boring Method/ Sample Method	Geoprobe / Macrocore 4-ft 5-ft
Drilling Co.	Completion Depth	
Drill Foreman J-H Snyder	Location 23	

Depth (Feet)	Recovery (% or Inches)	PID every 6"	Visual Description	Sample No.	Comments
3' 4" 0			Brown med sand		Sample
			1.5' over sand		1-3'
			sand gravel mixture		1338
5' 4" 0			gray med sand,		sample
			some silt with		7-9'
			med gravel		1351
10' 3" 0			Brown sand and		sample
			gravel		11-13'
			Bottom 14" is all rock		1433
			Refused at 13'		

Depth to Groundwater: _____	Backfill Type: Cuttings	Cuttings/Bentonite	Bentonite
Monitoring Well Installed? YES NO	Asphalt / Concrete		
Monitoring Well ID: _____			
Location surveyed? Yes No	GPS Surveyor	Other	

GEOPROBE Soil Boring Log

Job Name		Readburn Wood Tar		Boring No.		Logged By J. Siegel	
Job No.				Page 1		1	
Date Drilled		7/30/08		Boring Method/ Sample Method		27 Geoprobe / Macrocore 4-ft 5-ft	
Drilling Co.		Zebra		Completion Depth			
Drill Foreman				Location		27	
Depth (Feet)	Recovery (% or inches)	PID every 6"	Visual Description			Sample No.	Comments
1	35"	0.0	Gravel, sand, Rock				19, 26
2		0.7	burnt wood, mortar				304'
3		0.8					1511
4		0.7					
5	31"	0.3	Gravel, sand, gravel				1-8
6		0.3	burnt wood				1530
7		0.4					
8		0.1					
9	36"	0	Pegs, gravel, silt				12-13'
10			sand				7-8
11							1541
12							
13							
14							
15							
Depth to Groundwater: _____				Backfill Type: Cuttings Cuttings/Bentonite Bentonite			
Monitoring Well Installed? YES NO				Asphalt / Concrete			
Monitoring Well ID: _____							
Location surveyed? Yes No				GPS Surveyor Other			

