

**Environmental  
Resources  
Management**

200 Harry S Truman Pkwy  
Suite 400  
Annapolis, MD 21401  
(410) 266-0006  
(410) 266-8912 (fax)  
<http://www.erm.com>



February 20, 2014

**SENT VIA FEDEX**

Mr. Greg Sonberg  
Environmental Program Manager  
Oil Control Program  
Maryland Department of the Environment  
1800 Washington Boulevard  
Baltimore, Maryland 21230

RE: Construction Completion Report for Abandonment of Monitoring  
Wells, Sumps, and the Underflow Dam, Sykesville Oil Site,  
Sykesville, Maryland  
EPA Docket No. CWA-03-2005-1050CW  
MDE Case No. 2004-1496CL

Dear Mr. Sonberg:

Environmental Resources Management (ERM) has prepared this report on behalf of Fogle's Septic Clean, Inc. (Fogle's) to request approval from the Maryland Department of the Environment (MDE), Oil Control Program (OCP), for case closure for the Seepage Area at the Fogle's Facility, located at 580 Obrecht Road, Sykesville, Maryland (hereinafter referred to as the "Sykesville Oil Site").

As requested by the OCP in a letter dated March 18, 2013, ERM, on behalf of Fogle's has completed the abandonment of monitoring wells, sumps, and the underflow dam and would like to request case closure of the Seepage Area. The planting of native tree seedlings to enhance revegetation of the area is to occur in the spring 2014 to maximize the survival of the plants. We trust the information presented herein provides the necessary documentation for closure of MDE Case No. 2004-1496CL.

Please call me at 410-266-0006 with any questions or if you should require any additional information.

Very truly yours,

Matthew W. Erbe  
Project Manager

Enclosure (1): Seepage Area Closure Report

Mr. Gregory Sonberg  
Sykesville Oil Site  
February 20, 2014  
Page 2 of 2

cc (hard copy and email):

Charles Fitzsimmons, EPA  
Heather Bennett, Fogle's Septic Clean, Inc.

cc (email):

Barry Bruce, Fogle's Septic Clean, Inc.  
Eric Bock, Esq., E. Bock Law  
Gary Walters, ERM

Construction Completion Report for  
Abandonment of Monitoring Wells,  
Sumps, and the Underflow Dam  
*Sykesville Oil Site*  
*Sykesville, Maryland*

20 February 2014

EPA Docket No.: CWA-03-2005-0150CW

MDE Case No.: 2004-1496CL

**Environmental Resources Management, Inc.**  
200 Harry S Truman Parkway  
Suite 400  
Annapolis, MD 21401

## TABLE OF CONTENTS

<b>LIST OF ACRONYMS</b>		<b><i>ii</i></b>
<b>1.0</b>	<b>INTRODUCTION AND BACKGROUND</b>	<b>1</b>
<b>2.0</b>	<b>CLOSURE ACTIVITIES</b>	<b>2</b>
2.1	<i>Piezometers, Sumps, and Monitor Well Abandonment</i>	2
2.2	<i>PVC Piping and Recovery Trench, Absorbent Booms, and Surface Structures Removal</i>	3
2.3	<i>Underflow Dam Removal</i>	3
2.4	<i>Soil Stabilization and Re-Vegetation</i>	4
2.5	<i>Re-Assessment of Seven Risk Factors</i>	4
<b>3.0</b>	<b>SUMMARY AND CONCLUSIONS</b>	<b>6</b>

## LIST OF FIGURES

<b>1</b>	<b><i>Site Location Map</i></b>
<b>2</b>	<b><i>Facility Area and Seep Area Monitoring Well Location Map</i></b>
<b>3</b>	<b><i>Replanting Plan</i></b>

## APPENDICES

<b>A</b>	<b><i>MDE Site Status Letter</i></b>
<b>B</b>	<b><i>Abandonment Photographic Log</i></b>
<b>C</b>	<b><i>Abandonment Reports</i></b>
<b>D</b>	<b><i>Dam Removal Photographic Log</i></b>
<b>E</b>	<b><i>MDE Dam Removal Letter</i></b>

## *LIST OF ACRONYMS*

COMAR	Code of Maryland Regulations
EMA	Episcopal Ministries to the Aging, Inc.
EPA	U.S. Environmental Protection Agency
ERM	Environmental Resources Management, Inc.
LPH	Liquid Phase Hydrocarbons
MDE	Maryland Department of the Environment
OCP	Oil Control Program

Environmental Resources Management (ERM) has prepared this Seepage Area Closure Report on behalf of Fogle's Septic Clean, Inc. (Fogle's), to summarize activities associated with the closure of the Seepage Area located in the wooded area at the bottom of a steep slope adjacent to and north of the Fogle's Facility, located at 580 Obrecht Road, Sykesville, Maryland (Figure 1) as part of the U.S. Environmental Protection Agency (EPA) led cleanup action for the Sykesville Oil Site.

The Seepage Area consists of unimproved land owned by Episcopal Ministries to the Aging, Inc. (EMA), and includes an unnamed creek which feeds Piney Run. In January 2004, Maryland Department of the Environment (MDE) personnel were informed of an oil seep emanating from the ground on the EMA property and impacting the unnamed creek. Background information and information pertaining to site clean-up and closure of the Fogle's Facility Seepage Area has been outlined in the document *Supporting Information for Product Monitoring Case Closure*, dated September 12, 2011 and additional data was provided in the *Addendum to Request for Closure of Product Monitoring at the Sykesville Oil Site*, dated September 14, 2012.

On February 13, 2013, the MDE Oil Control Program (OCP) completed an on-site assessment of the sumps, monitoring wells and piezometers at the Fogle's Facility to determine if further remedial actions related to product removal were required. A summary of MDE OCP's findings are included in the letter *Site Status Letter – Cleanup Suspension* dated March 18, 2013. This letter has been included as Appendix A for reference. Based on MDE OCP's evaluation, field measurements and liquid phase hydrocarbons (LPH) results, the referenced case (Case No. 2004-1496CL) was considered for closure. The following activities were to be completed prior to case closure:

1. All piezometers, sumps, and monitoring wells shall be properly abandoned in accordance with Code of Maryland Regulations (COMAR) 26.04.04.11. A Maryland licensed well driller shall be used for all abandonment activities.
2. PVC piping in the recovery trench shall be removed and openings sealed.
3. All sorbent booms in or near to the stream shall be removed and disposed of properly.
4. The underflow collection dam shall be removed in stages to limit any sediment discharge and to reduce the potential for damaging the down-gradient stream configuration. The OCP has confirmed that permits from either MDE or Carroll County are not required to complete this work. It is recommended that straw bales be temporarily placed down-gradient to reduce sediment discharge until the dam has been removed.

5. All other surface structures and materials that were part of this case shall be removed.
6. Soil stabilization and re-vegetation of disturbed areas, including any additional tree and shrub planting required by the USEPA Administrative Order by Consent, shall be completed.
7. A final report shall: (a) be provided to the USEPA and the OCP documenting all closure activities; (b) include copies of well abandonment report; (c) include photographs of all decommissioning activities; and (d) revisit the seven risk factors discussed in the September 12, 2011 ERM report. Copies of the well abandonment reports shall also be provided to the Carroll County Health Department (attn: Mr. Leigh Broderick, Carroll County Health Department, P.O. Box 845, Westminster MD 21158).

Fogle's has completed the above activities, with the exception of re-vegetation of disturbed areas. The re-vegetation is planned for the spring of 2014 following the last frost. This report documents those activities completed in accordance with MDE OCP's letter dated March 18, 2013. Separate notification will be provided to the EPA and MDE documenting the completion of the re-vegetation activities.

## **2.0 CLOSURE ACTIVITIES**

Closure activities were initiated the week of April 29, 2013 as documented in *Progress Report #107*, dated May 13, 2013, and are summarized below.

### **2.1 *Piezometers, Sumps, and Monitor Well Abandonment***

Closure activities were initiated starting the week of April 29, 2013 with the abandonment of the piezometers, recovery sumps, and monitoring wells (Figure 2). Actual well abandonments were performed by Fogles Well Drilling, LLC and a Maryland licensed well driller in accordance with Code of Maryland Regulations (COMAR) 26.04.04.11. The well driller attempted to pull and remove all PVC casings for the piezometers, sumps, and monitor wells, grouted-in the open borehole and/or PVC in place (if unable to remove the casing), and removed all surface casings and structures. Well abandonment activities were documented in a photo log presented as Appendix B. Well abandonment reports are included as Appendix C. Copies of the well abandonment reports were submitted to the Carroll County Health Department.

The summary of wells abandoned are included on the table below.

**Table 1: Summary of Wells, Piezometers and Sumps Abandoned**

Monitoring Well/Piezometer	Recovery/Trench Sump
MW-FGL-01	SUMP A
MW-FGL-02	SUMP B
MW-A01	SUMP C
MW-A02	SUMP D
MW-A02S	Sump-V
MW-A03	Sump-W
MW-A03S	Sump-X
RX-V1	Sump-Y
RX-X1	Sump-Z
TMW-A1	
TMW-A3	
TMW-A6	
TMW-A7	
TMW-A8	
TMW-B1	
TMW-B2	
TMW-C1	
TMW-C2	
TMW-F1	
TMW-F2	

## 2.2 *PVC Piping and Recovery Trench, Absorbent Booms, and Surface Structures Removal*

Any PVC associated with the recovery trench was removed during the abandonment of wells and sumps, and surface openings were sealed. Absorbent booms and any other surface structures at the Fogel's Facility and Seepage Area were also removed. A photographic log documenting removal is included as Appendix B. Additional photographs are included with dam removal activities (Appendix D).

## 2.3 *Underflow Dam Removal*

Per MDE OCP's letter dated March 18, 2013, the agency was notified at least five business days prior to initiating the destruction and removal of the overflow dam. EPA and MDE OCP were notified during e-mail transmission of Progress Report #110 (e-mail dated August 5, 2013) that deconstruction of the dam would begin on August 13, 2013. On August 13, 2013, an ERM representative along with MDE representative (Jim Richmond) were onsite to observe the removal of the dam located in the "unnamed" creek feeding Piney Run, tributary to Patapsco River.

The dam was removed in accordance with MDE OCP's letter dated March 18, 2013 (Appendix A).

Fogles' personnel initiated removal by placing straw bales north of the dam and slowly lowering the water level to minimize sediment release to downstream areas. Once an adequate water level was reached, Fogle's began to remove the 6" PVC underflow piping. At this time, the actual dam removal began by removing the sand bags and cutting back the liner as much as possible without disturbing the existing shoreline. It was agreed by all parties onsite that the liner and stone along the shoreline would remain in place to prevent damaging existing vegetation and possible unsettling of the bank. All removed dam debris was taken from area and properly disposed. A photographic log of the dam removal activities is included as Appendix D. Upon completion of the dam removal, ERM was given a signed report from MDE acknowledging their presence and approval of the work completed (Appendix E).

## 2.4 *Soil Stabilization and Re-Vegetation*

As documented in the *Abatement Plan*, dated January 5, 2007, ERM proposed re-vegetation of the seep area, to the extent practical, with hybrid poplar trees and a mixture of native trees.

The replanting would occur in two phases: initial planting of hybrid poplar trees, followed by the planting of native trees, following remediation activities. As documented in the report *Supporting Information for Product Monitoring Case Closure*, dated September 12, 2011, initial planting occurred in May of 2007. On May 17, 2007, Fogle's planted a total of 36 hybrid poplar trees downgradient of Sump A to enhance attenuation of hydrocarbons in the shallow groundwater. An additional 4 hybrid poplar trees were planted upgradient of Sump D.

Now that remediation activities have ceased, re-planting of native trees is scheduled. The re-planting will consist of a mix of native species ideally including red maple, yellow poplar, and black cherry. Fogle's will coordinate any necessary re-planting with EMA, and provide a map with locations for proposed planting (Figure 3). The re-planting of the native species is anticipated to take place during spring 2014 following the last frost. Until then, native vegetation within and surrounding the seepage area will have the chance to naturally seed, grow, and re-vegetate the area.

## 2.5 *Re-Assessment of Seven Risk Factors*

A re-assessment of the Seven Risk Factors included in the document *Supporting Information for Product Monitoring Case Closure*, dated September 12, 2011, was performed. The seven risk factors as incorporated into the referenced document include:

1. Liquid Phase Hydrocarbons (LPH)
2. Current and Future Use of Impacted Ground Water
3. Migration of Contamination
4. Human Exposure
5. Environmental Ecological Exposure
6. Impact to Utilities and Other Buried Services
7. Other Sensitive Receptors

Each of the seven risk factors have been re-visited and re-assessed for changes as compared to the initial evaluation in the September 2011 report *Supporting Information for Product Monitoring Case Closure*. The conditions of the Site and evaluation of the risk factors has remained unchanged since evaluated in the September 2011 report:

- As of March 2013, in both the Fogle's Facility and the Seep Area, the amount of LPH has decreased to nearly immeasurable thicknesses in all wells and sumps, as noted in the submittal of *Progress Report #106*. Free product was not encountered during well abandonments;
- There are no groundwater users between the suspected release area and Piney run and therefore, there are no potable receptors of impacted ground water. The property north of the Fogle's Facility is owned by EMA and is not planned for future use of the land that would require installation of a drinking water well. However, in the event that a drinking water well would be installed on either property, the Carroll County Environmental Health Department would be contacted for permit review and approval before installation of the proposed well. Carroll County Environmental Health Department maintains a database of properties and in consultation with the MDE would assess the proposed well location to determine the need for specific analytical data in addition to the primary testing for regulated contaminants.
- The threat of the potential for petroleum to migrate to the unnamed stream (i.e., the primary receptor) has been mitigated via the pumping of LPH out of wells and sumps since 2005. Since 2005, the migration of LPH has been controlled preventing the threat of discharge to the unnamed tributary to Piney Run. Furthermore, free-product has been removed from the subsurface to the extent practicable. The absence of LPH in deep monitoring wells (i.e., MW-A02 and MW-A03) confirms that LPH has not impacted the shallow bedrock ground water;
- As measurable amounts of LPH at the site are negligible (i.e., LPH has been recovered to the extent practicable) and there are no users on Site, the risk of human exposure to LPH in groundwater is minimal;
- Removal of LPH from the sumps and wells in the seep and hill slope area have eliminated the threat of discharge of LPH to the stream. LPH was not observed in the stream during the dam removal;

- There are no known underground utilities in the vicinity of the historical release of product in the Facility Area, or in the Hill Slope and Seep Area. Therefore, the potential presence of any trace oil remaining in the subsurface would not cause any adverse effects to hypothetical underground utilities; and
- Other than the unnamed stream, there are no sensitive receptors present at the site and the threat of petroleum migration to the unnamed stream has been mitigated.

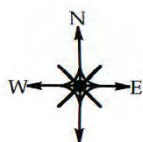
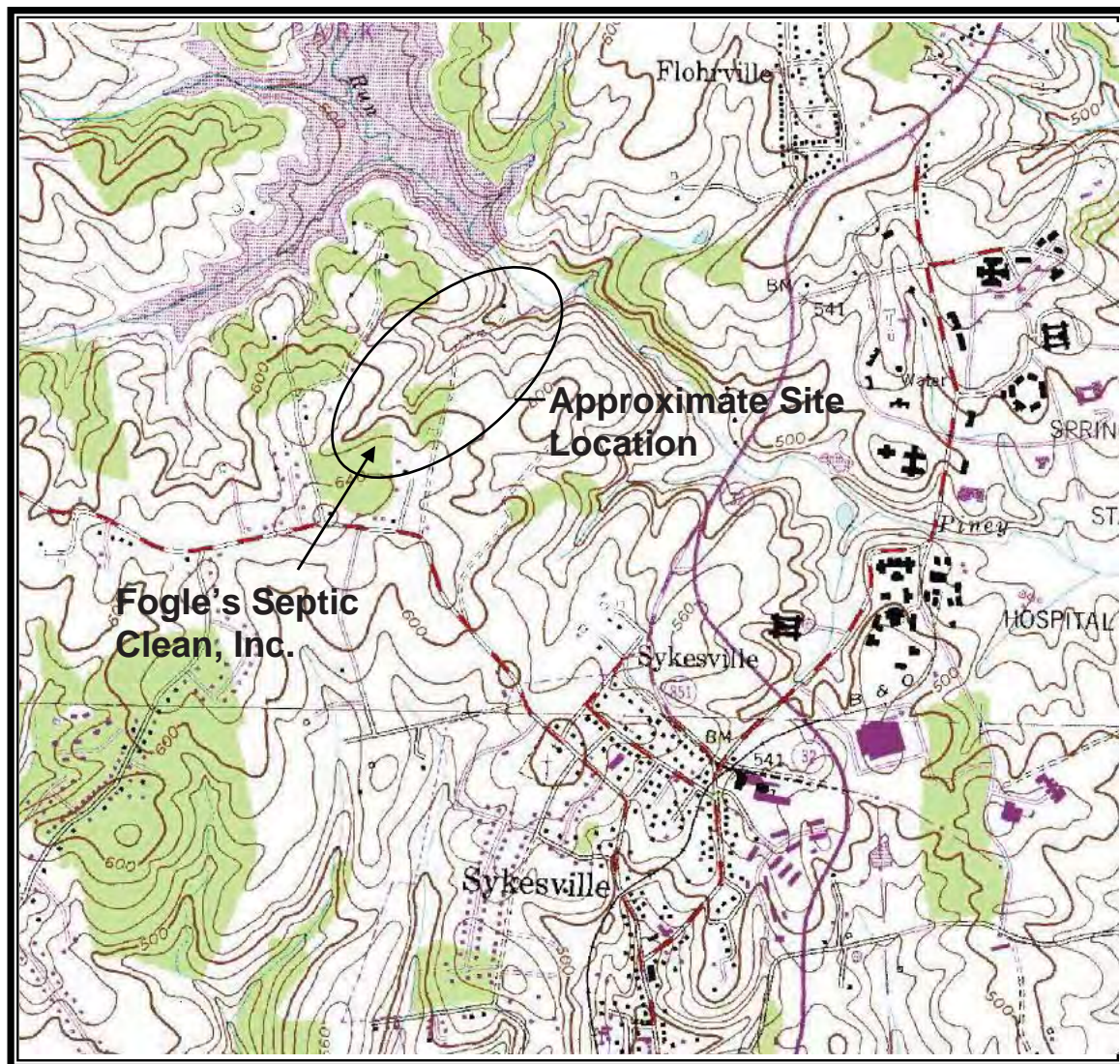
### 3.0

#### **SUMMARY AND CONCLUSIONS**

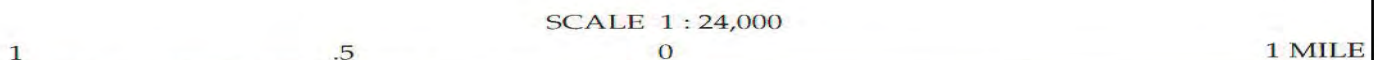
Closure activities including piezometer, sumps, well abandonments, underflow dam removal, and removal of surface structures, etc. have been performed and completed in accordance with MDE OCP's letter dated March 18, 2013. Re-evaluation of the seven risk factors has not identified any new risk since implementation of the September 2011 report *Supporting Information for Product Monitoring Case Closure*. Planting of native vegetation is scheduled for completion in spring 2014 following the last frost. Based on activities completed to date, ERM, on behalf of Fogle's, respectfully requests closure of the Seepage Area monitoring and remediation activities.

## *Figures*

**Figure 1**  
**Site Location Map**  
**580 Obrecht Road and Adjacent Properties**  
**Sykesville Oil Site**  
**Sykesville, Maryland**

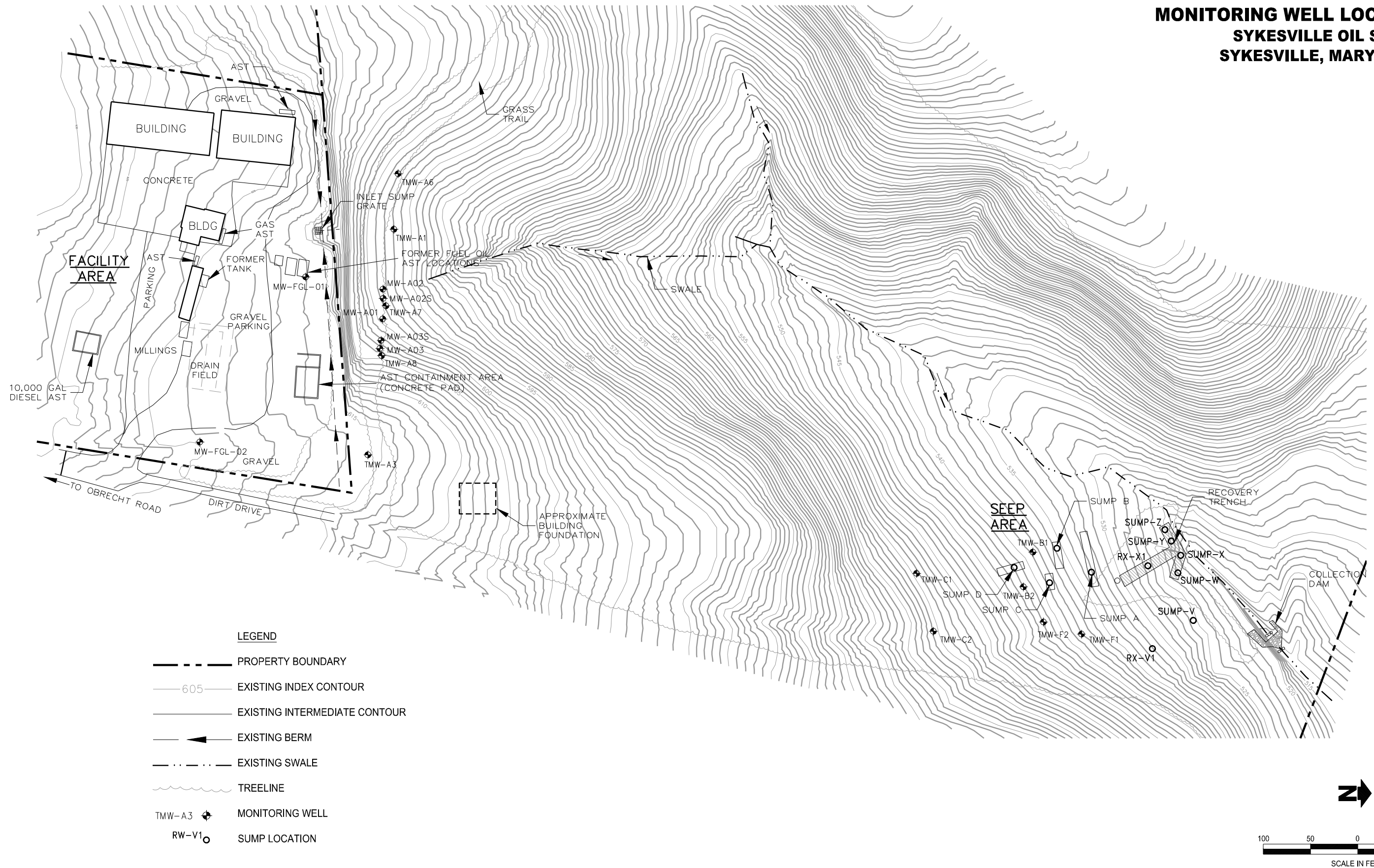


*Sykesville Quadrangle*  
*Maryland*  
*7.5 Minute Series*



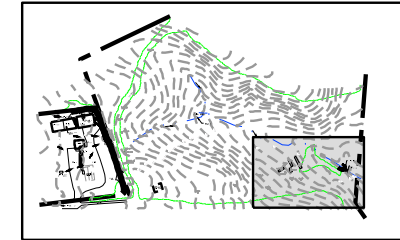
CONTOUR INTERVAL 20 FEET

**FIGURE 2**  
**FACILITY AREA AND SEEP AREA**  
**MONITORING WELL LOCATION MAP**  
**SYKESVILLE OIL SITE**  
**SYKESVILLE, MARYLAND**

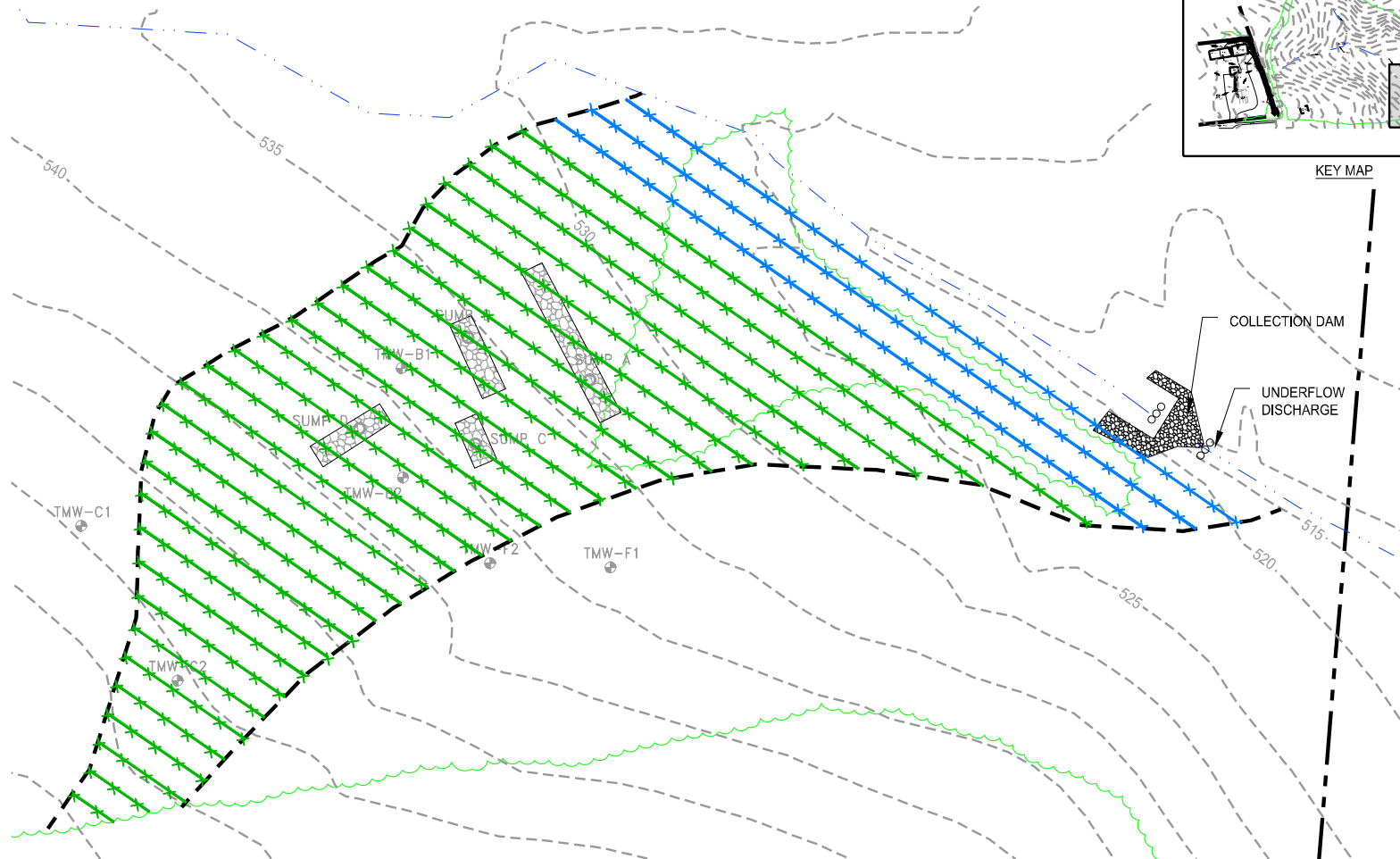


G:\CAD\Drawings\Sykesville\0032112\A202.dwg

**FIGURE 3  
REPLANTING PLAN  
SYKESVILLE OIL SITE  
SYKESVILLE, MARYLAND**



**KEY MAP**

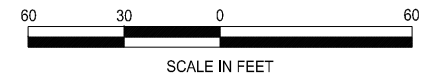


**LEGEND**

	PROPERTY LINE		APPROXIMATE CLEARING BOUNDARY
	CONTOUR (5 FT)		HYBRID POPLAR ROWS - 77 TREES
	STREAM		NATIVE SPECIES ROWS - 328 TREES EVEN MIX OF RED MAPLE, YELLOW POPLAR, AND BLACK CHERRY
	MONITORING WELL		
	SUMP		

**NOTES:**

1. REPLANTING WILL OCCUR IN TWO PHASES.
2. PHASE 1, HYBRID POPLARS: HYBRID POPLAR REPLANTING PLAN BASED ON 5-7 FOOT BARE-ROOT TREES.
3. PHASE 2, NATIVE TREES: NATIVE TREES SPECIES WILL BE PLANTED FOLLOWING REMEDIATION ACTIVITIES. REPLANTING BASED ON THE USE OF CONTAINER GROWN SEEDLING TUBES. REPLANTING SPACING AND DENSITIES BASED ON REQUIREMENTS OF THE MARYLAND STATE FOREST CONSERVATION TECHNICAL MANUAL, 1997.



*Appendix A – MDE Site Status  
Letter*



## MARYLAND DEPARTMENT OF THE ENVIRONMENT

Oil Control Program, Suite 620, 1800 Washington Blvd., Baltimore MD 21230-1719  
410-537-3442 410-537-3092 (fax) 1-800-633-6101, ext. 3442

Martin O'Malley  
Governor

Robert M. Summers, Ph.D.  
Secretary

March 18, 2013

Anthony G. Brown  
Lieutenant Governor

Mr. David R. Fogle Jr.  
Mr. Dale Harrison Fogle  
Fogles Septic Clean, Inc.  
558 Obrecht Road  
Sykesville, MD 21784-7609

AND

Mr. Charles E. Fitzsimmons, FOSC  
USEPA RIII  
Environmental Science Center-3HS31  
701 Mapes Road  
Ft. Meade, MD 20755

**RE: SITE STATUS LETTER - CLEANUP SUSPENSION**  
**Case No. 2004-1496CL**  
**Fogles Septic Clean Inc.**  
**580 Obrecht Road, Sykesville**  
**Carroll County, Maryland**

Dear Mssrs. Fogle and Mr. Fitzsimmons:

The Maryland Department of the Environment's Oil Control Program (OCP) completed an on-site assessment of the monitoring wells and piezometers on February 13, 2013 for the referenced site to determine if further remedial actions may be required. Case 2004-1496CL was opened on March 5, 2004 as the result of oil seeping out of the ground and into an unnamed tributary to Piney Run. An Administrative Order by Consent was agreed to on April 28, 2005 between the Fogles and the U. S. Environmental Protection Agency (USEPA) to "abate, mitigate and/or eliminate any threat to public health and the environment" as a result of the oil release. A Response Action Plan was submitted by Fogles' consultant, Environmental Resources Management, Inc. (ERM), to the USEPA and approved on May 31, 2005. An Extent of Contamination Study was completed by ERM and submitted to the USEPA on April 3, 2006 which identified two areas (Facility Area and Hill Slope/Seep Area) at the Obrecht Road site and one area (Farm Oil-Contaminated Soils) at 1711 Dennings Road, New Windsor, MD requiring mitigation. Mitigation efforts by the Fogles and ERM have occurred at both sites between January 2007 and December 2012. Oil-contaminated soils were removed from the Dennings Road site in June 2012 to a Maryland permitted oil-contaminated soil treatment facility in Hagerstown, MD. The USEPA, with concurrence from the OCP, approved the completion of all mitigation efforts at the Dennings Road site on September 24, 2012. The Obrecht Road site has recovered approximately 4,565 gallons of oil as of December 31, 2012. The bulk of this oil was recovered from 2005 - 2010 with only very small amounts recovered since then.

In March 2011, the OCP, in conjunction with USEPA and Fogle representatives, performed an initial evaluation of some of the monitoring wells and the stream at the Obrecht Road site to assess this part of the case for possible closure. As a result of this evaluation, ERM, per OCP requirements and on behalf of the Fogles, submitted the report, "*Supporting Information for Product Monitoring Case Closure*", dated September 12, 2011. In February 2013, the OCP, in conjunction with USEPA and Fogle representatives, performed a follow-up evaluation of the stream area, the recovery trench, and the gauging of four sumps, two piezometers, and six monitoring wells.

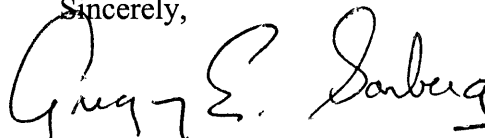
Based on this evaluation, and the gauging and LPH recovery results, the Oil Control Program is considering the referenced case for closure. Prior to case closure the following activities shall be completed:

1. All piezometers, sumps, and monitoring wells shall be properly abandoned in accordance with Code of Maryland Regulations (COMAR) 26.04.04.11. A Maryland licensed well driller shall be used for all abandonment activities.
2. PVC piping in the recovery trench shall be removed and openings sealed.
3. All sorbent booms in or near to the stream shall be removed and disposed of properly.
4. The underflow collection dam shall be removed in stages to limit any sediment discharge and to reduce the potential for damaging the down-gradient stream configuration. The OCP has confirmed that permits from either MDE or Carroll County are not required to complete this work. It is recommended that straw bales be temporarily placed down-gradient to reduce sediment discharge until the dam has been removed.
5. All other surface structures and materials that were part of this case shall be removed.
6. Soil stabilization and re-vegetation of disturbed areas, including any additional tree and shrub planting required by the USEPA Administrative Order by Consent, shall be completed.
7. A final report shall: (a) be provided to the USEPA and the OCP documenting all closure activities; (b) include copies of well abandonment reports; (c) include photographs of all decommissioning activities; and (d) revisit the seven risk factors discussed in the September 12, 2011 ERM report. Copies of the well abandonment reports shall also be provided to the Carroll County Health Department (attn: Mr. Leigh Broderick, Carroll County Health Department, P.O. Box 845, Westminster MD 21158).

Upon completion of all activities and the receipt of the final report, a Final Closure Letter will be issued for this case. Because the Obrecht Road site is not on public water and the release occurred on property owned by others, notification from the OCP to Carroll County Health Department (attn: Mr. Leigh Broderick) will be made to ensure that if future development occurs on the affected property, potable well samples will include analytical requirements for volatile organic compounds.

Please notify the OCP at least five business days prior to deconstruction of the overflow dam so the opportunity to observe these field activities can be considered. Submit two hard copies and a digital copy on a labeled compact disc (CD) of the final report to the USEPA (attn: Mr. Charles E. Fitzsimmons, FOSC) and to the OCP. I may be contacted at 410-537-3412 or by email: [gsonberg@mde.state.md.us](mailto:gsonberg@mde.state.md.us).

Sincerely,

A handwritten signature in black ink, appearing to read "Greg E. Sonberg". The signature is fluid and cursive, with the first name "Greg" and last name "Sonberg" clearly legible.

Gregory E. Sonberg, Chief  
Permits and Support Division  
Oil Control Program

GS/ms

cc: Mr. Horacio Tablada  
Mr. Christopher H. Ralston  
Mr. Andrew B. Miller  
Mr. Matthew Erbe (ERM)  
Mr. Leigh Broderick (Carroll County)

*Appendix B - Abandonment  
Photographic Log*




## PHOTOGRAPHIC LOG

<b>Client Name:</b> Fogles Septic Clean, Inc.		<b>Site Location:</b> Sykesville, MD	<b>Project No.</b> 0032112
<b>Photo No.</b> 1	<b>Date:</b> April, 2013	 A photograph showing four black rectangular markers labeled "STATION A", "STATION B", "STATION C", and "STATION D" arranged in a row on a grassy area. In front of each marker, a white PVC pipe is laid out on a blue tarp. The pipes are of varying lengths and are positioned parallel to the markers.	
<b>Direction Photo Taken:</b>  Unknown			
<b>Description:</b>  PVC Sump Stations A, B, C, D post abandonment.			

<b>Photo No.</b> 2	<b>Date:</b> April, 2013	 A photograph showing a close-up of a sump station. A large, white, irregularly shaped object, possibly a piece of plastic or a sump cover, is lying on a gravelly surface. A white chalk mark, resembling the letter "A", is drawn on the gravel in the foreground. A blue cap is visible on the left side of the white object.
<b>Direction Photo Taken:</b>  Unknown		
<b>Description:</b>  Abandoned Sump A. About 16 feet of PVC casing removed.		




## PHOTOGRAPHIC LOG

<b>Client Name:</b> Fogles Septic Clean, Inc.		<b>Site Location:</b> Sykesville, MD	<b>Project No.</b> 0032112
<b>Photo No.</b> <b>3</b>	<b>Date:</b> April, 2013	 A photograph showing a gravelly area with some vegetation. A large white letter 'B' is painted on the gravel. A dark, horizontal object, possibly a pipe or log, lies on the ground in the upper center.	
<b>Direction Photo Taken:</b>  Unknown			
<b>Description:</b>  Abandoned Sump B. About 18 feet of casing removed.			

<b>Photo No.</b> <b>4</b>	<b>Date:</b> April, 2013	 A photograph showing a gravelly area with some vegetation. A large white letter 'C' is painted on the gravel. A dark, horizontal object, possibly a pipe or log, lies on the ground in the upper center.	
<b>Direction Photo Taken:</b>  Unknown			
<b>Description:</b>  Abandoned Sump C. About 6 feet of casing removed.			



## PHOTOGRAPHIC LOG


<b>Client Name:</b> Fogles Septic Clean, Inc.		<b>Site Location:</b> Sykesville, MD	<b>Project No.</b> 0032112
<b>Photo No.</b> <b>5</b>	<b>Date:</b> April, 2013		
<b>Direction Photo Taken:</b>  Unknown			
<b>Description:</b>  Abandoned Sump D. About 20 feet of casing removed.			

<b>Photo No.</b> <b>6</b>	<b>Date:</b> April, 2013		
<b>Direction Photo Taken:</b>  Unknown			
<b>Description:</b>  Abandoned TMW-B1. Well was cut off at grade.			




## PHOTOGRAPHIC LOG

<b>Client Name:</b> Fogles Septic Clean, Inc.		<b>Site Location:</b> Sykesville, MD	<b>Project No.</b> 0032112
<b>Photo No.</b> <b>7</b>	<b>Date:</b> April, 2013	 A photograph showing a deep, circular hole in the ground, partially filled with dark soil and surrounded by green grass and weeds. The hole appears to be an abandoned well.	
<b>Direction Photo Taken:</b>  Unknown			
<b>Description:</b>  Abandoned TMW-B2. Well was cut off at grade.			

<b>Photo No.</b> <b>8</b>	<b>Date:</b> April, 2013	 A photograph showing two metal casings lying on the ground next to a hole. One casing is upright, and the other is lying on its side. The ground is covered with green grass and some white debris.
<b>Direction Photo Taken:</b>  Unknown		
<b>Description:</b>  FGL 01. Casings were cut off below grade.		




## PHOTOGRAPHIC LOG

<b>Client Name:</b> Fogles Septic Clean, Inc.		<b>Site Location:</b> Sykesville, MD	<b>Project No.</b> 0032112
<b>Photo No.</b> <b>9</b>	<b>Date:</b> April, 2013		
<b>Direction Photo Taken:</b>  Unknown			
<b>Description:</b>  FGL 02. Casings were cut off below grade.			

<b>Photo No.</b> <b>10</b>	<b>Date:</b> April, 2013		
<b>Direction Photo Taken:</b>  Unknown			
<b>Description:</b>  MW-A01. Casings were cut off below grade.			





## PHOTOGRAPHIC LOG

<b>Client Name:</b> Fogles Septic Clean, Inc.		<b>Site Location:</b> Sykesville, MD	<b>Project No.</b> 0032112
<b>Photo No.</b> <b>11</b>	<b>Date:</b> April, 2013		
<b>Direction Photo Taken:</b>  Unknown			
<b>Description:</b>  MW-A02. Casings were cut off below grade.			

<b>Photo No.</b> <b>12</b>	<b>Date:</b> April, 2013	
<b>Direction Photo Taken:</b>  Unknown		
<b>Description:</b>  MW-A02S. Casings were cut off below grade.		



## PHOTOGRAPHIC LOG

<b>Client Name:</b> Fogles Septic Clean, Inc.		<b>Site Location:</b> Sykesville, MD	<b>Project No.</b> 0032112
<b>Photo No.</b> <b>13</b>	<b>Date:</b> April, 2013		
<b>Direction Photo Taken:</b>  Unknown			
<b>Description:</b>  MW-A03. Casings were cut off below grade.			
<b>Photo No.</b> <b>14</b>	<b>Date:</b> April, 2013		
<b>Direction Photo Taken:</b>  Unknown			
<b>Description:</b>  MW-A03S. Casings were cut off below grade.			

*Appendix C - Abandonment  
Reports*

## WATER WELL ABANDONMENT-SEALING REPORT FORM

MARYLAND DEPARTMENT OF THE ENVIRONMENT, WATER MANAGEMENT ADMINISTRATION  
1800 Washington Blvd., Baltimore, Maryland 21230 (410) 537-3784

\*\*\*\*\*  
WATER WELL ABANDONMENT-SEALING REPORT FORM  
\*\*\*\*\*

SUBMIT COPIES OF COMPLETED FORM TO:

- \* COUNTY ENVIRONMENTAL AGENCY (contact MDE, WMA if address needed)
- \* WELL OWNER
- \* MDE, WATER MANAGEMENT ADMINISTRATION, WELL PROGRAM

DATE WELL ABANDONED: 9-25-13 (month/day/year)

\* PERMIT NUMBER OF ABANDONED WELL (if any)

\* PERMIT NUMBER OF REPLACEMENT WELL:

\* PERSON ABANDONING WELL: Allen Compton

WELL DRILLER'S LICENSE NUMBER: 009

\* OWNER'S NAME: Fogles Septic Clean, Inc.

CIRCLE: MWD / MSD / MGD

\* WELL LOCATION:

COUNTY: Carroll

NEAREST TOWN: Sykesville

TAX MAP BLOCK        PARCEL       

SUBDIVISION:       

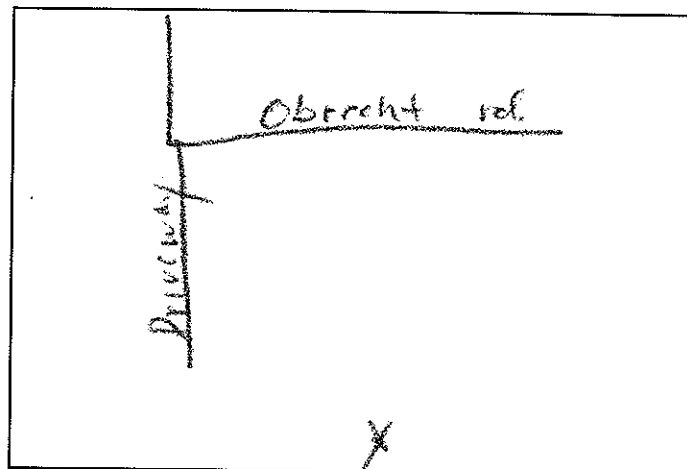
SECTION:        LOT:       

STREET ADDRESS: 580 Obercht Rd

LATITUDE 3 - - - - -

LONGITUDE 7 - - - - -

SITE LOCATION MAP



\* TYPE OF WELL BEING ABANDONED:

       DRILLED        JETTED  
       BORED        HAND DUG  
       OTHER (specify)       

\* USE CODE: DOMESTIC

       IRRIGATION        MUNICIPAL/PUBLIC  
       TEST/OBSERVATION        INDUSTRIAL  
              GEOTHERMAL

\* TYPE OF CASING:

       STEEL        PLASTIC  
       CONCRETE        OTHER (specify)       

SIZE OF CASING:        INCHES IN DIAMETER

DEPTH OF WELL: 13 FEET DEEP

WAS ANY CASING REMOVED?        YES        NO

If yes, length removed, in feet:       

WAS CASING RIPPED OR PERFORATED?        YES        NO

LOG OF SEALING MATERIAL

MATERIAL	FEET	
	FROM	TO
<u>Cement</u>	<u>0</u>	<u>13</u>
VOLUME OF MATERIAL USED		
<u>4 bags</u>		

OWNER



MARYLAND DEPARTMENT OF THE ENVIRONMENT, WATER MANAGEMENT ADMINISTRATION  
1800 Washington Blvd., Baltimore, Maryland 21230 (410) 537-3784

\*\*\*\*\*  
WATER WELL ABANDONMENT-SEALING REPORT FORM  
\*\*\*\*\*

SUBMIT COPIES OF COMPLETED FORM TO:

- \* COUNTY ENVIRONMENTAL AGENCY (contact MDE, WMA if address needed)
- \* WELL OWNER
- \* MDE, WATER MANAGEMENT ADMINISTRATION, WELL PROGRAM

DATE WELL ABANDONED: 7-25-13 (month/day/year)

\* PERMIT NUMBER OF ABANDONED WELL (if any)

\* PERMIT NUMBER OF REPLACEMENT WELL:

\* PERSON ABANDONING WELL: Allen Compton

WELL DRILLER'S LICENSE NUMBER: 009  
CIRCLE: MWD ~~MSD~~ ~~MGD~~

\* OWNER'S NAME: Fogles Septic Clean, Inc.

\* WELL LOCATION:

COUNTY: Carroll

NEAREST TOWN: Sikesville

TAX MAP \_\_\_\_\_ BLOCK \_\_\_\_\_ PARCEL \_\_\_\_\_

SUBDIVISION: \_\_\_\_\_

SECTION: \_\_\_\_\_ LOT: \_\_\_\_\_

STREET ADDRESS: 580 Obrecht RD

LATITUDE 3 \_ . \_ \_ \_ \_ \_

LONGITUDE 7 \_ . \_ \_ \_ \_ \_

Allen Compton

\* TYPE OF WELL BEING ABANDONED:

DRILLED JETTED  
BORED HAND DUG  
OTHER (specify) \_\_\_\_\_

\* USE CODE: DOMESTIC

IRRIGATION MUNICIPAL/PUBLIC  
TEST/OBSERVATION INDUSTRIAL  
GEOTHERMAL

\* TYPE OF CASING:

STEEL PLASTIC  
CONCRETE OTHER (specify) \_\_\_\_\_

SIZE OF CASING: \_\_\_\_\_ INCHES IN DIAMETER

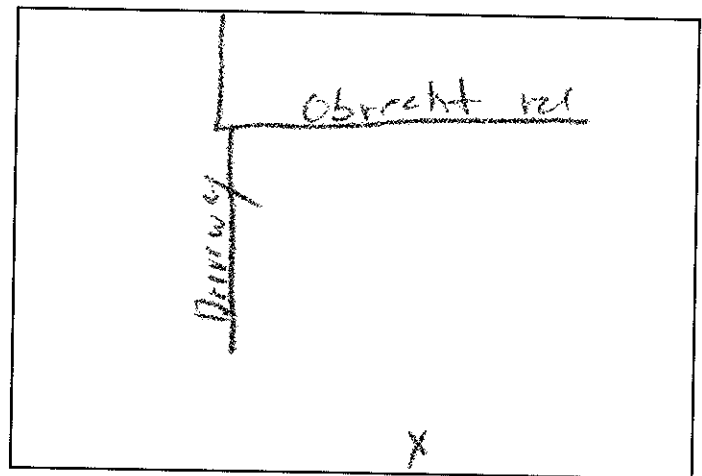
DEPTH OF WELL: 12.2 FEET DEEP

WAS ANY CASING REMOVED? YES NO

If yes, length removed, in feet: \_\_\_\_\_

WAS CASING RIPPED OR PERFORATED? YES NO

SITE LOCATION MAP



LOG OF SEALING MATERIAL

MATERIAL	FEET	
	FROM	TO
<u>Cement</u>	<u>0</u>	<u>12.2</u>
VOLUME OF MATERIAL USED		
<u>4 bags</u>		

OWNER



MARYLAND DEPARTMENT OF THE ENVIRONMENT, WATER MANAGEMENT ADMINISTRATION  
1800 Washington Blvd., Baltimore, Maryland 21230 (410) 537-3784

\*\*\*\*\*  
WATER WELL ABANDONMENT-SEALING REPORT FORM  
\*\*\*\*\*

SUBMIT COPIES OF COMPLETED FORM TO:

- \* COUNTY ENVIRONMENTAL AGENCY (contact MDE, WMA if address needed)
- \* WELL OWNER
- \* MDE, WATER MANAGEMENT ADMINISTRATION, WELL PROGRAM

DATE WELL ABANDONED: 9-25-13 (month/day/year)

\* PERMIT NUMBER OF ABANDONED WELL (if any)

\* PERMIT NUMBER OF REPLACEMENT WELL:

\* PERSON ABANDONING WELL: Allen Compton

WELL DRILLER'S LICENSE NUMBER: 669

\* OWNER'S NAME: Fogles Septic Clean, Inc.

CIRCLE: MWD / MSD / MGD

\* WELL LOCATION:

COUNTY: Carroll

NEAREST TOWN: Sykesville

TAX MAP \_\_\_\_\_ BLOCK \_\_\_\_\_ PARCEL \_\_\_\_\_

SUBDIVISION: \_\_\_\_\_

SECTION: \_\_\_\_\_ LOT: \_\_\_\_\_

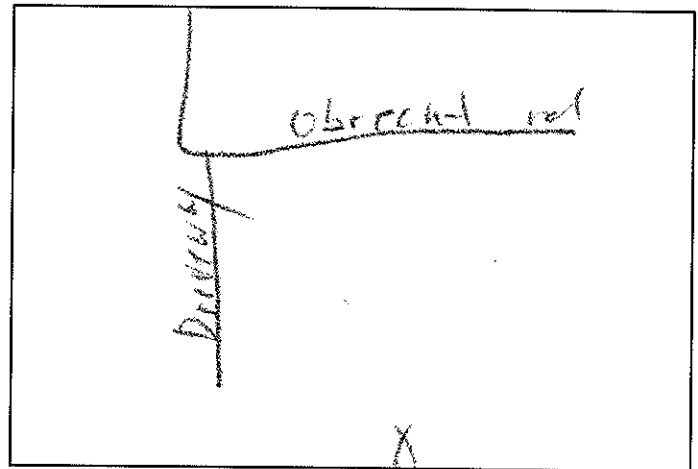
STREET ADDRESS: 580 Obrecht Rd

LATITUDE 3 . - - - - -

LONGITUDE 7 . - - - - -

Allen Compton

SITE LOCATION MAP



\* TYPE OF WELL BEING ABANDONED:

\_\_\_\_ DRILLED \_\_\_\_\_ JETTED  
\_\_\_\_ BORED \_\_\_\_\_ HAND DUG  
\_\_\_\_ OTHER (specify) \_\_\_\_\_

\* USE CODE: DOMESTIC

\_\_\_\_ IRRIGATION \_\_\_\_\_ MUNICIPAL/PUBLIC  
\_\_\_\_ TEST/OBSERVATION \_\_\_\_\_ INDUSTRIAL  
\_\_\_\_ \_\_\_\_\_ GEOTHERMAL

\* TYPE OF CASING:

\_\_\_\_ STEEL \_\_\_\_\_ PLASTIC  
\_\_\_\_ CONCRETE \_\_\_\_\_ OTHER (specify) \_\_\_\_\_

SIZE OF CASING: \_\_\_\_\_ INCHES IN DIAMETER

DEPTH OF WELL: 14.9 FEET DEEP

WAS ANY CASING REMOVED? \_\_\_\_ YES \_\_\_\_ NO

If yes, length removed, in feet: \_\_\_\_\_

WAS CASING RIPPED OR PERFORATED? \_\_\_\_ YES \_\_\_\_ NO

LOG OF SEALING MATERIAL

MATERIAL	FEET	
	FROM	TO
<u>cemrat</u>	<u>0</u>	<u>14.9</u>
VOLUME OF MATERIAL USED		
<u>4 bags</u>		

OWNER



# WATER WELL ABANDONMENT-SEALING REPORT FORM



MARYLAND DEPARTMENT OF THE ENVIRONMENT, WATER MANAGEMENT ADMINISTRATION  
1800 Washington Blvd., Baltimore, Maryland 21230 (410) 537-3784

\*\*\*\*\*  
WATER WELL ABANDONMENT-SEALING REPORT FORM  
\*\*\*\*\*

SUBMIT COPIES OF COMPLETED FORM TO:

- \* COUNTY ENVIRONMENTAL AGENCY (contact MDE, WMA if address needed)
- \* WELL OWNER
- \* MDE, WATER MANAGEMENT ADMINISTRATION, WELL PROGRAM

DATE WELL ABANDONED: 7-25-13 (month/day/year)

\* PERMIT NUMBER OF ABANDONED WELL (if any)

\* PERMIT NUMBER OF REPLACEMENT WELL:

\* PERSON ABANDONING WELL: Allen Compton

WELL DRILLER'S LICENSE NUMBER: 009

\* OWNER'S NAME: Fogles Septic Clean

CIRCLE: MWD / MSD / MGD

\* WELL LOCATION:

COUNTY: Carroll

NEAREST TOWN: Sykesville

TAX MAP BLOCK            PARCEL           

SUBDIVISION:           

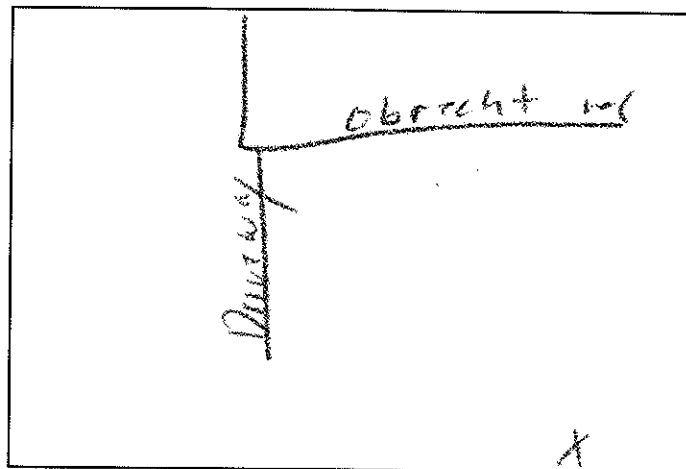
SECTION:            LOT:           

STREET ADDRESS: 580 Obrecht Rd

LATITUDE 3                                                        

LONGITUDE 7                                                        

SITE LOCATION MAP



LOG OF SEALING MATERIAL

MATERIAL	FEET	
	FROM	TO
<u>Cement</u>	<u>0</u>	<u>8</u>
VOLUME OF MATERIAL USED		
<u>2 bags</u>		

\* TYPE OF WELL BEING ABANDONED:

       DRILLED        JETTED  
       BORED        HAND DUG  
       OTHER (specify)                     

\* USE CODE: DOMESTIC

       IRRIGATION        MUNICIPAL/PUBLIC  
       TEST/OBSERVATION        INDUSTRIAL  
              GEOTHERMAL

\* TYPE OF CASING:

       STEEL        PLASTIC  
       CONCRETE        OTHER (specify)                     

SIZE OF CASING:        INCHES IN DIAMETER

DEPTH OF WELL: 8 FEET DEEP

WAS ANY CASING REMOVED?        YES        NO

If yes, length removed, in feet:                     

WAS CASING RIPPED OR PERFORATED?        YES        NO

OWNER



MARYLAND DEPARTMENT OF THE ENVIRONMENT, WATER MANAGEMENT ADMINISTRATION  
1800 Washington Blvd., Baltimore, Maryland 21230 (410) 537-3784

\*\*\*\*\*  
WATER WELL ABANDONMENT-SEALING REPORT FORM  
\*\*\*\*\*

SUBMIT COPIES OF COMPLETED FORM TO:

- \* COUNTY ENVIRONMENTAL AGENCY (contact MDE, WMA if address needed)
- \* WELL OWNER
- \* MDE, WATER MANAGEMENT ADMINISTRATION, WELL PROGRAM

DATE WELL ABANDONED: 9-25-13 (month/day/year)

\* PERMIT NUMBER OF ABANDONED WELL (if any) \_\_\_\_\_

\* PERMIT NUMBER OF REPLACEMENT WELL: \_\_\_\_\_

\* PERSON ABANDONING WELL: Allen Compton

WELL DRILLER'S LICENSE NUMBER: 009

\* OWNER'S NAME: Fogles Septic Clean, Inc.

CIRCLE: MWD / MSD / MGD

\* WELL LOCATION:

COUNTY: Carroll

NEAREST TOWN: Sylvestria

TAX MAP \_\_\_\_\_ BLOCK \_\_\_\_\_ PARCEL \_\_\_\_\_

SUBDIVISION: \_\_\_\_\_

SECTION: \_\_\_\_\_ LOT: \_\_\_\_\_

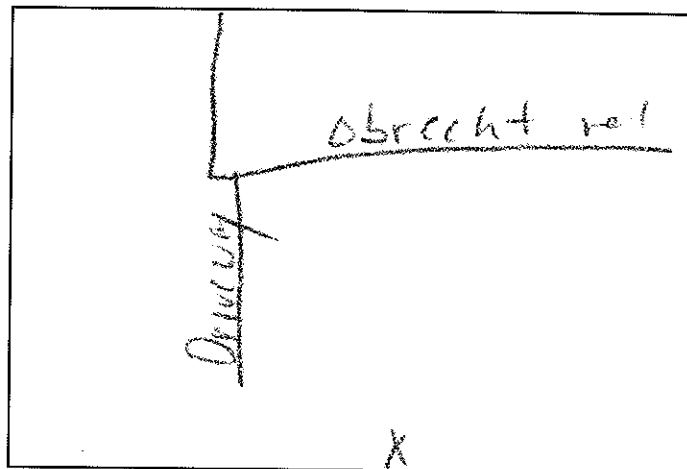
STREET ADDRESS: 580 Obrecht Rd

LATITUDE 3 . - - - - -

LONGITUDE 7 . - - - - -

Allen Compton

SITE LOCATION MAP



\* TYPE OF WELL BEING ABANDONED:

       DRILLED        JETTED  
       BORED        HAND DUG  
       OTHER (specify) \_\_\_\_\_

\* USE CODE: DOMESTIC

       IRRIGATION        MUNICIPAL/PUBLIC  
  /   TEST/OBSERVATION        INDUSTRIAL  
              GEOTHERMAL

\* TYPE OF CASING:

       STEEL        PLASTIC  
       CONCRETE        OTHER (specify) \_\_\_\_\_

SIZE OF CASING: \_\_\_\_\_ INCHES IN DIAMETER

DEPTH OF WELL: 8 FEET DEEP

WAS ANY CASING REMOVED?        YES   /   NO

If yes, length removed, in feet: \_\_\_\_\_

WAS CASING RIPPED OR PERFORATED?        YES   /   NO

LOG OF SEALING MATERIAL

MATERIAL	FEET	
	FROM	TO
<u>Cement</u>	<u>0</u>	<u>8</u>
VOLUME OF MATERIAL USED		
<u>2 bags</u>		

OWNER



MARYLAND DEPARTMENT OF THE ENVIRONMENT, WATER MANAGEMENT ADMINISTRATION  
1800 Washington Blvd., Baltimore, Maryland 21230 (410) 537-3784

\*\*\*\*\*  
WATER WELL ABANDONMENT-SEALING REPORT FORM  
\*\*\*\*\*

SUBMIT COPIES OF COMPLETED FORM TO:

- \* COUNTY ENVIRONMENTAL AGENCY (contact MDE, WMA if address needed)
- \* WELL OWNER
- \* MDE, WATER MANAGEMENT ADMINISTRATION, WELL PROGRAM

DATE WELL ABANDONED: 9-25-13 (month/day/year)

\* PERMIT NUMBER OF ABANDONED WELL (if any)

\* PERMIT NUMBER OF REPLACEMENT WELL:

\* PERSON ABANDONING WELL: Allen Compton

WELL DRILLER'S LICENSE NUMBER: 009

\* OWNER'S NAME: Fogles Septic Clean, Inc.

CIRCLE: MWD / MSD / MGD

\* WELL LOCATION:

COUNTY: Carroll

NEAREST TOWN: Sykesville

TAX MAP BLOCK        PARCEL       

SUBDIVISION:       

SECTION:        LOT:       

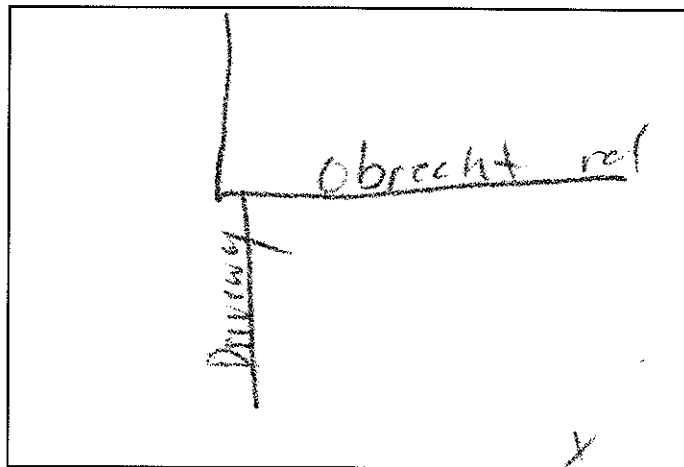
STREET ADDRESS: 580 Obrecht Rd

LATITUDE 3 . - - - - -

LONGITUDE 7 . - - - - -

Allen Compton

SITE LOCATION MAP



\* TYPE OF WELL BEING ABANDONED:

       DRILLED        JETTED  
       BORED        HAND DUG  
       OTHER (specify)       

\* USE CODE: DOMESTIC

       IRRIGATION        MUNICIPAL/PUBLIC  
       / TEST/OBSERVATION        INDUSTRIAL  
              GEOTHERMAL

\* TYPE OF CASING:

       STEEL        PLASTIC  
       CONCRETE        OTHER (specify)       

SIZE OF CASING:        INCHES IN DIAMETER

DEPTH OF WELL: 8 FEET DEEP

WAS ANY CASING REMOVED?        YES        /        NO

If yes, length removed, in feet:       

WAS CASING RIPPED OR PERFORATED?        YES        /        NO

LOG OF SEALING MATERIAL

MATERIAL	FEET	
	FROM	TO
<u>Cement</u>	<u>0</u>	<u>8</u>
VOLUME OF MATERIAL USED		
<u>2 bags</u>		

OWNER



MARYLAND DEPARTMENT OF THE ENVIRONMENT, WATER MANAGEMENT ADMINISTRATION  
1800 Washington Blvd., Baltimore, Maryland 21230 (410) 537-3784

\*\*\*\*\*  
WATER WELL ABANDONMENT-SEALING REPORT FORM  
\*\*\*\*\*

SUBMIT COPIES OF COMPLETED FORM TO:

- \* COUNTY ENVIRONMENTAL AGENCY (contact MDE, WMA if address needed)
- \* WELL OWNER
- \* MDE, WATER MANAGEMENT ADMINISTRATION, WELL PROGRAM

DATE WELL ABANDONED: 7-75-13 (month/day/year)

\* PERMIT NUMBER OF ABANDONED WELL (if any)

\* PERMIT NUMBER OF REPLACEMENT WELL:

\* PERSON ABANDONING WELL: Allen Compton

WELL DRILLER'S LICENSE NUMBER: 009

\* OWNER'S NAME: Fogles Septic Clean

CIRCLE: MWD / MSD / MGD

\* WELL LOCATION:

COUNTY: Carroll

NEAREST TOWN: Sylbesville

TAX MAP \_\_\_\_\_ BLOCK \_\_\_\_\_ PARCEL \_\_\_\_\_

SUBDIVISION: \_\_\_\_\_

SECTION: \_\_\_\_\_ LOT: \_\_\_\_\_

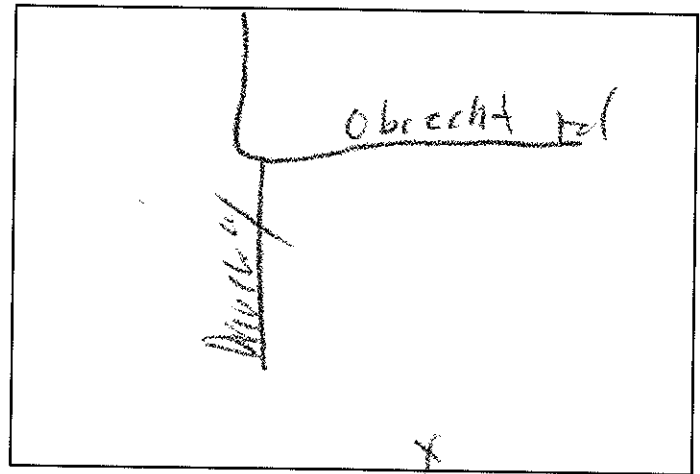
STREET ADDRESS: 580 Obrecht RD

LATITUDE 3 \_ . \_ \_ \_ \_ \_

LONGITUDE 7 \_ . \_ \_ \_ \_ \_

*Allen Compton*

SITE LOCATION MAP



\* TYPE OF WELL BEING ABANDONED:

\_\_\_\_ DRILLED \_\_\_\_\_ JETTED  
\_\_\_\_ BORED \_\_\_\_\_ HAND DUG  
\_\_\_\_ OTHER (specify) \_\_\_\_\_

\* USE CODE: DOMESTIC

\_\_\_\_ IRRIGATION \_\_\_\_\_ MUNICIPAL/PUBLIC  
\_\_\_\_ TEST/OBSERVATION \_\_\_\_\_ INDUSTRIAL  
\_\_\_\_ \_\_\_\_\_ \_\_\_\_\_ GEOTHERMAL

\* TYPE OF CASING:

\_\_\_\_ STEEL \_\_\_\_\_ PLASTIC  
\_\_\_\_ CONCRETE \_\_\_\_\_ OTHER (specify) \_\_\_\_\_

SIZE OF CASING: \_\_\_\_\_ INCHES IN DIAMETER

DEPTH OF WELL: 8 FEET DEEP

WAS ANY CASING REMOVED? \_\_\_\_ YES \_\_\_\_ NO

If yes, length removed, in feet: \_\_\_\_\_

WAS CASING RIPPED OR PERFORATED? \_\_\_\_ YES \_\_\_\_ NO

LOG OF SEALING MATERIAL

MATERIAL	FEET	
	FROM	TO
<u>Concrete</u>	<u>0</u>	<u>8</u>
VOLUME OF MATERIAL USED		
<u>2 bags</u>		

MARYLAND DEPARTMENT OF THE ENVIRONMENT, WATER MANAGEMENT ADMINISTRATION  
1800 Washington Blvd., Baltimore, Maryland 21230 (410) 537-3784

\*\*\*\*\*  
WATER WELL ABANDONMENT-SEALING REPORT FORM  
\*\*\*\*\*

SUBMIT COPIES OF COMPLETED FORM TO:

- \* COUNTY ENVIRONMENTAL AGENCY (contact MDE, WMA if address needed)
- \* WELL OWNER
- \* MDE, WATER MANAGEMENT ADMINISTRATION, WELL PROGRAM

DATE WELL ABANDONED: 9-25-13 (month/day/year)

\* PERMIT NUMBER OF ABANDONED WELL (if any)

\* PERMIT NUMBER OF REPLACEMENT WELL:

\* PERSON ABANDONING WELL: Allen Compton

WELL DRILLER'S LICENSE NUMBER: 009

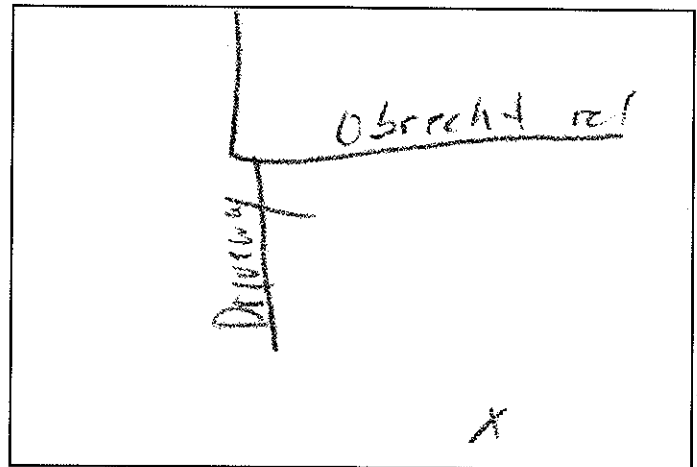
\* OWNER'S NAME: Eagles Septic Clean

CIRCLE: MWD / MSD / MGD

\* WELL LOCATION:

SITE LOCATION MAP

COUNTY: Carroll  
NEAREST TOWN: Subsille  
TAX MAP BLOCK PARCEL  
SUBDIVISION: \_\_\_\_\_  
SECTION: \_\_\_\_\_ LOT: \_\_\_\_\_  
STREET ADDRESS: 580 Obrecht Rd



LATITUDE 3 \_ . \_ \_ \_ \_ \_

LONGITUDE 7 \_ . \_ \_ \_ \_ \_

\* TYPE OF WELL BEING ABANDONED:

DRILLED JETTED  
BORED HAND DUG  
OTHER (specify) \_\_\_\_\_

\* USE CODE: DOMESTIC

IRRIGATION MUNICIPAL/PUBLIC  
TEST/OBSERVATION INDUSTRIAL  
GEOTHERMAL

\* TYPE OF CASING:

STEEL PLASTIC  
CONCRETE OTHER (specify) \_\_\_\_\_

SIZE OF CASING: \_\_\_\_\_ INCHES IN DIAMETER

DEPTH OF WELL: 8 FEET DEEP

WAS ANY CASING REMOVED? YES NO

If yes, length removed, in feet: \_\_\_\_\_

WAS CASING RIPPED OR PERFORATED? YES NO

LOG OF SEALING MATERIAL

MATERIAL	FEET	
	FROM	TO
<u>concrete</u>	<u>0</u>	<u>8</u>
VOLUME OF MATERIAL USED		
<u>2 bags</u>		

OWNER

MARYLAND DEPARTMENT OF THE ENVIRONMENT, WATER MANAGEMENT ADMINISTRATION  
1800 Washington Blvd., Baltimore, Maryland 21230 (410) 537-3784

\*\*\*\*\*  
WATER WELL ABANDONMENT-SEALING REPORT FORM  
\*\*\*\*\*

SUBMIT COPIES OF COMPLETED FORM TO:

- \* COUNTY ENVIRONMENTAL AGENCY (contact MDE, WMA if address needed)
- \* WELL OWNER
- \* MDE, WATER MANAGEMENT ADMINISTRATION, WELL PROGRAM

DATE WELL ABANDONED: 9-25-73 (month/day/year)

RX-XI

\* PERMIT NUMBER OF ABANDONED WELL (if any)

\* PERMIT NUMBER OF REPLACEMENT WELL:

\* PERSON ABANDONING WELL: Allen Compton WELL DRILLER'S LICENSE NUMBER: 009

CIRCLE: MWD / MSD / MGD

\* OWNER'S NAME: Fogles Septic Clean, Inc

\* WELL LOCATION:

COUNTY: Carroll

NEAREST TOWN: Sylkesville

TAX MAP \_\_\_\_\_ BLOCK \_\_\_\_\_ PARCEL \_\_\_\_\_

SUBDIVISION: \_\_\_\_\_

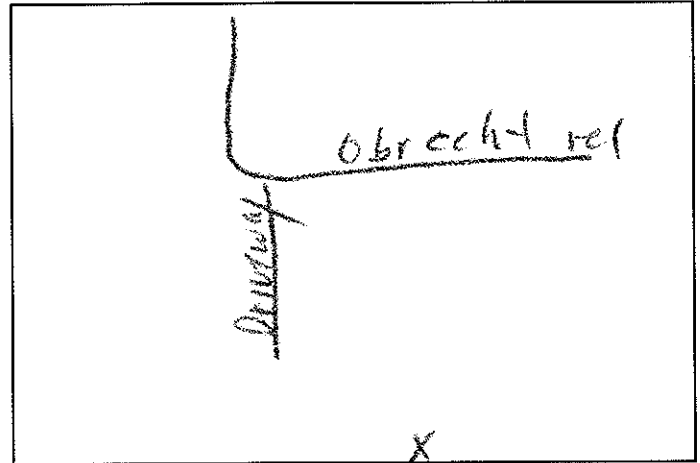
SECTION: \_\_\_\_\_ LOT: \_\_\_\_\_

STREET ADDRESS: 580 Obrecht RD

LATITUDE 3 \_ . \_ \_ \_ \_ \_

LONGITUDE 7 \_ . \_ \_ \_ \_ \_

SITE LOCATION MAP



\* TYPE OF WELL BEING ABANDONED:

DRILLED JETTED  
BORED HAND DUG  
OTHER (specify) \_\_\_\_\_

\* USE CODE: DOMESTIC

IRRIGATION MUNICIPAL/PUBLIC  
TEST/OBSERVATION INDUSTRIAL  
\_\_\_\_\_ GEOTHERMAL

\* TYPE OF CASING:

STEEL PLASTIC  
CONCRETE OTHER (specify) \_\_\_\_\_

SIZE OF CASING: \_\_\_\_\_ INCHES IN DIAMETER

DEPTH OF WELL: 8 FEET DEEP

WAS ANY CASING REMOVED? YES NO

If yes, length removed, in feet: \_\_\_\_\_

WAS CASING RIPPED OR PERFORATED? YES NO

LOG OF SEALING MATERIAL

MATERIAL	FEET	
	FROM	TO
<u>Cement</u>	<u>0</u>	<u>8</u>
VOLUME OF MATERIAL USED		
<u>2 bags</u>		

OWNER

MARYLAND DEPARTMENT OF THE ENVIRONMENT, WATER MANAGEMENT ADMINISTRATION  
1800 Washington Blvd., Baltimore, Maryland 21230 (410) 537-3784

\*\*\*\*\*  
WATER WELL ABANDONMENT-SEALING REPORT FORM  
\*\*\*\*\*

SUBMIT COPIES OF COMPLETED FORM TO:

- \* COUNTY ENVIRONMENTAL AGENCY (contact MDE, WMA if address needed)
- \* WELL OWNER
- \* MDE, WATER MANAGEMENT ADMINISTRATION, WELL PROGRAM

DATE WELL ABANDONED: 9-24-13 (month/day/year)

\* PERMIT NUMBER OF ABANDONED WELL (if any)

CL-95-0204

\* PERMIT NUMBER OF REPLACEMENT WELL:

WV-A03-

\* PERSON ABANDONING WELL: Allen Compton

WELL DRILLER'S LICENSE NUMBER: 009

\* OWNER'S NAME: Fogles ~~WMA~~ Septic Clean, Inc.

CIRCLE: MWD / MSD / MGD

\* WELL LOCATION:

COUNTY: Carroll

NEAREST TOWN: Sykesville

TAX MAP \_\_\_\_\_ BLOCK \_\_\_\_\_ PARCEL \_\_\_\_\_

SUBDIVISION: \_\_\_\_\_

SECTION: \_\_\_\_\_ LOT: \_\_\_\_\_

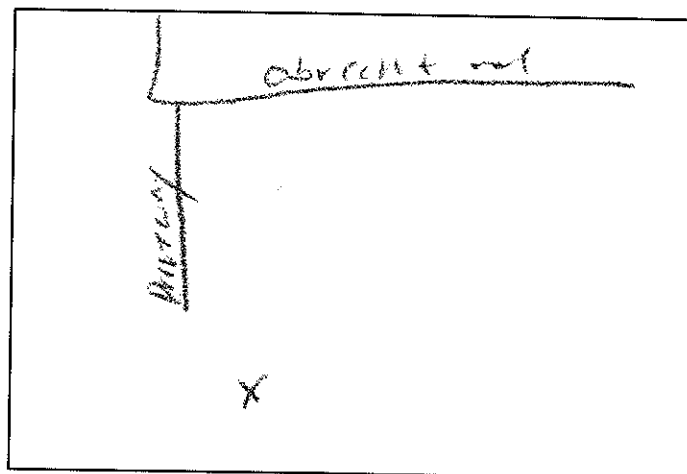
STREET ADDRESS: 580 Obrecht Rd

LATITUDE 3 9 . 3 8 2 8 2 4

LONGITUDE 7 6 . 9 7 8 4 4 7

Allen Compton

SITE LOCATION MAP



\* TYPE OF WELL BEING ABANDONED:

\_\_\_\_\_DRILLED \_\_\_\_\_JETTED

\_\_\_\_\_BORED \_\_\_\_\_HAND DUG

/ OTHER (specify) monitoring

\* USE CODE: DOMESTIC

\_\_\_\_\_IRRIGATION \_\_\_\_\_MUNICIPAL/PUBLIC

/ TEST/OBSERVATION \_\_\_\_\_INDUSTRIAL

\_\_\_\_\_GEOTHERMAL

\* TYPE OF CASING:

/ STEEL \_\_\_\_\_PLASTIC

\_\_\_\_\_CONCRETE \_\_\_\_\_OTHER (specify) \_\_\_\_\_

SIZE OF CASING: 5 INCHES IN DIAMETER

DEPTH OF WELL: 80 FEET DEEP

WAS ANY CASING REMOVED? / YES \_\_\_\_\_NO

If yes, length removed, in feet: 5

WAS CASING RIPPED OR PERFORATED? \_\_\_\_\_YES / NO

LOG OF SEALING MATERIAL

MATERIAL	FEET	
	FROM	TO
<u>Concrete</u>	<u>0</u>	<u>80</u>
VOLUME OF MATERIAL USED		
<u>5 yards</u>		

MARYLAND DEPARTMENT OF THE ENVIRONMENT, WATER MANAGEMENT ADMINISTRATION  
1800 Washington Blvd., Baltimore, Maryland 21230 (410) 537-3784

\*\*\*\*\*  
WATER WELL ABANDONMENT-SEALING REPORT FORM  
\*\*\*\*\*

SUBMIT COPIES OF COMPLETED FORM TO:

- \* COUNTY ENVIRONMENTAL AGENCY (contact MDE, WMA if address needed)
- \* WELL OWNER
- \* MDE, WATER MANAGEMENT ADMINISTRATION, WELL PROGRAM

DATE WELL ABANDONED: 9-24-13 (month/day/year)

\* PERMIT NUMBER OF ABANDONED WELL (if any)

\* PERMIT NUMBER OF REPLACEMENT WELL:

\* PERSON ABANDONING WELL: Allen Compton

WELL DRILLER'S LICENSE NUMBER: 009  
CIRCLE: MWD / MSD / MGD

\* OWNER'S NAME: Eagles Septic Clean, Inc.

\* WELL LOCATION:

COUNTY: Carroll

NEAREST TOWN: Sykesville

TAX MAP            BLOCK            PARCEL           

SUBDIVISION:           

SECTION:            LOT:           

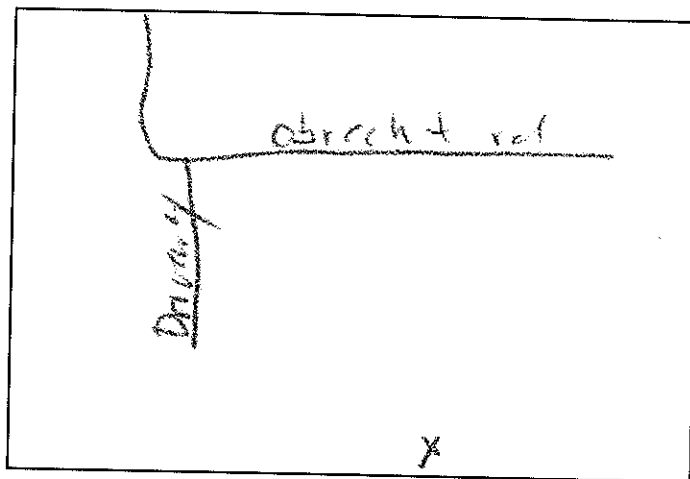
STREET ADDRESS: 580 Drexel RD

LATITUDE 39.382706

LONGITUDE 76.978241

Allen Compton

SITE LOCATION MAP



\* TYPE OF WELL BEING ABANDONED:

           DRILLED            JETTED  
           BORED            HAND DUG  
✓ OTHER (specify) monitoring

\* USE CODE: DOMESTIC

           IRRIGATION            MUNICIPAL/PUBLIC  
✓ TEST/OBSERVATION            INDUSTRIAL  
                      GEOTHERMAL

\* TYPE OF CASING:

✓ STEEL            PLASTIC  
           CONCRETE            OTHER (specify)           

SIZE OF CASING: 5 INCHES IN DIAMETER

DEPTH OF WELL: 43 FEET DEEP

WAS ANY CASING REMOVED? ✓ YES            NO

If yes, length removed, in feet: 5

WAS CASING RIPPED OR PERFORATED?            YES ✓ NO

LOG OF SEALING MATERIAL

MATERIAL	FEET	
	FROM	TO
<u>CEMENT</u>	<u>0</u>	<u>43</u>
VOLUME OF MATERIAL USED		
<u>12 yards</u>		

MARYLAND DEPARTMENT OF THE ENVIRONMENT, WATER MANAGEMENT ADMINISTRATION  
1800 Washington Blvd., Baltimore, Maryland 21230 (410) 537-3784

\*\*\*\*\*  
WATER WELL ABANDONMENT-SEALING REPORT FORM  
\*\*\*\*\*

SUBMIT COPIES OF COMPLETED FORM TO:

- \* COUNTY ENVIRONMENTAL AGENCY (contact MDE, WMA if address needed)
- \* WELL OWNER
- \* MDE, WATER MANAGEMENT ADMINISTRATION, WELL PROGRAM

DATE WELL ABANDONED: 9-7-13 (month/day/year)

\* PERMIT NUMBER OF ABANDONED WELL (if any)

\* PERMIT NUMBER OF REPLACEMENT WELL:

\* PERSON ABANDONING WELL: Allen Compton

\* OWNER'S NAME: Fogles Septic Clean, Inc.

\* WELL LOCATION:

COUNTY: Carroll

NEAREST TOWN: Sykesville

TAX MAP BLOCK \_\_\_\_\_ PARCEL \_\_\_\_\_

SUBDIVISION: \_\_\_\_\_

SECTION: \_\_\_\_\_ LOT: \_\_\_\_\_

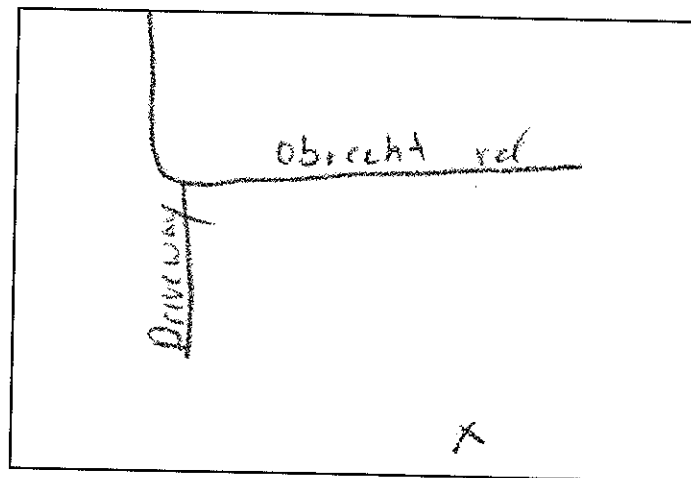
STREET ADDRESS: 580 Obrecht Rd

LATITUDE 39.382832

LONGITUDE 76.978412

WELL DRILLER'S LICENSE NUMBER: 009  
CIRCLE: MWD / MSD / MGD

SITE LOCATION MAP



\* TYPE OF WELL BEING ABANDONED:

\_\_\_\_ DRILLED \_\_\_\_\_ JETTED  
\_\_\_\_ BORED \_\_\_\_\_ HAND DUG

☒ OTHER (specify) Monitoring

\* USE CODE: DOMESTIC

\_\_\_\_ IRRIGATION \_\_\_\_\_ MUNICIPAL/PUBLIC  
☒ TEST/OBSERVATION \_\_\_\_\_ INDUSTRIAL  
\_\_\_\_ \_\_\_\_\_ GEOTHERMAL

\* TYPE OF CASING:

☒ STEEL \_\_\_\_\_ PLASTIC  
\_\_\_\_ CONCRETE \_\_\_\_\_ OTHER (specify) \_\_\_\_\_

SIZE OF CASING: 5 INCHES IN DIAMETER

DEPTH OF WELL: 40 FEET DEEP

WAS ANY CASING REMOVED? ☒ YES \_\_\_\_\_ NO

If yes, length removed, in feet: 5

WAS CASING RIPPED OR PERFORATED? \_\_\_\_\_ YES ☒ NO

LOG OF SEALING MATERIAL

MATERIAL	FEET	
	FROM	TO
<u>cement</u>	<u>0</u>	<u>40</u>
VOLUME OF MATERIAL USED		
<u>.24 cu yd</u>		

MARYLAND DEPARTMENT OF THE ENVIRONMENT, WATER MANAGEMENT ADMINISTRATION  
1800 Washington Blvd., Baltimore, Maryland 21230 (410) 537-3784

WATER WELL ABANDONMENT-SEALING REPORT FORM

SUBMIT COPIES OF COMPLETED FORM TO:

- \* COUNTY ENVIRONMENTAL AGENCY (contact MDE, WMA if address needed)
- \* WELL OWNER
- \* MDE, WATER MANAGEMENT ADMINISTRATION, WELL PROGRAM

DATE WELL ABANDONED: 7-24-13 (month/day/year)

\* PERMIT NUMBER OF ABANDONED WELL (if any)

\* PERMIT NUMBER OF REPLACEMENT WELL:

\* PERSON ABANDONING WELL: Allen Compton

WELL DRILLER'S LICENSE NUMBER: 009

\* OWNER'S NAME: Fogles Septic Clean, Inc.

CIRCLE: MWD MSD MGD

\* WELL LOCATION:

COUNTY: Carroll

NEAREST TOWN: Sylkesville

TAX MAP            BLOCK            PARCEL           

SUBDIVISION:           

SECTION:            LOT:           

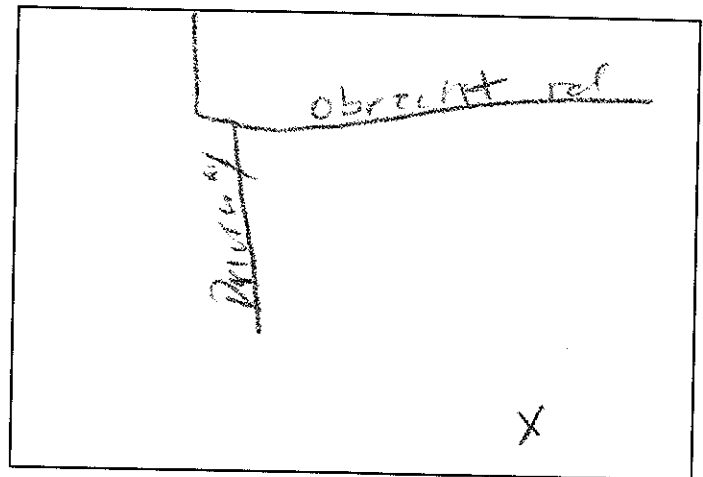
STREET ADDRESS: 580 Obrecht RD

LATITUDE 39.382961

LONGITUDE 76.978386

Allen Compton

SITE LOCATION MAP



\* TYPE OF WELL BEING ABANDONED:

           DRILLED            JETTED

           BORED            HAND DUG

✓ OTHER (specify) monitoring

\* USE CODE: DOMESTIC

           IRRIGATION            MUNICIPAL/PUBLIC

✓ TEST/OBSERVATION            INDUSTRIAL

                      GEOTHERMAL

\* TYPE OF CASING:

✓ STEEL            PLASTIC

           CONCRETE            OTHER (specify)           

SIZE OF CASING: 5 INCHES IN DIAMETER

DEPTH OF WELL: 60 FEET DEEP

WAS ANY CASING REMOVED? ✓ YES            NO

If yes, length removed, in feet: 5

WAS CASING RIPPED OR PERFORATED?            YES ✓ NO

LOG OF SEALING MATERIAL

MATERIAL	FEET	
	FROM	TO
<u>cement</u>	<u>0</u>	<u>60</u>
VOLUME OF MATERIAL USED		
<u>.5 yards</u>		

MARYLAND DEPARTMENT OF THE ENVIRONMENT, WATER MANAGEMENT ADMINISTRATION  
1800 Washington Blvd., Baltimore, Maryland 21230 (410) 537-3784

\*\*\*\*\*  
WATER WELL ABANDONMENT-SEALING REPORT FORM  
\*\*\*\*\*

SUBMIT COPIES OF COMPLETED FORM TO:

- \* COUNTY ENVIRONMENTAL AGENCY (contact MDE, WMA if address needed)
- \* WELL OWNER
- \* MDE, WATER MANAGEMENT ADMINISTRATION, WELL PROGRAM

DATE WELL ABANDONED: 9-21-13 (month/day/year)

\* PERMIT NUMBER OF ABANDONED WELL (if any) — MW — A01

\* PERMIT NUMBER OF REPLACEMENT WELL: — —

\* PERSON ABANDONING WELL: Allen Gumpin

WELL DRILLER'S LICENSE NUMBER: 009

\* OWNER'S NAME: Egles Septic Clean, Inc.

CIRCLE: MWD MSD MGD

\* WELL LOCATION:

COUNTY: Carroll

NEAREST TOWN: Shutesville

TAX MAP BLOCK        PARCEL       

SUBDIVISION:       

SECTION:        LOT:       

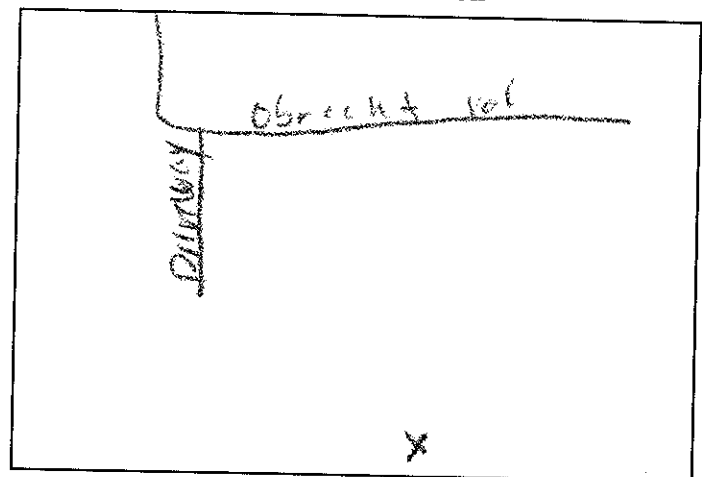
STREET ADDRESS: 580 Creek + Rd

LATITUDE 39.382710

LONGITUDE 76.978485

Allen Gumpin

SITE LOCATION MAP



\* TYPE OF WELL BEING ABANDONED:

       DRILLED        JETTED  
       BORED        HAND DUG  
✓ OTHER (specify) monitoring

\* USE CODE: DOMESTIC

       IRRIGATION        MUNICIPAL/PUBLIC  
✓ TEST/OBSERVATION        INDUSTRIAL  
              GEOTHERMAL

\* TYPE OF CASING:

✓ STEEL        PLASTIC  
       CONCRETE        OTHER (specify)       

SIZE OF CASING: 5 INCHES IN DIAMETER

DEPTH OF WELL: 38 FEET DEEP

WAS ANY CASING REMOVED? ✓ YES        NO

If yes, length removed, in feet: 5

WAS CASING RIPPED OR PERFORATED? ✓ YES        NO

LOG OF SEALING MATERIAL

MATERIAL	FEET	
	FROM	TO
<u>CEMENT</u>	<u>0</u>	<u>38</u>
VOLUME OF MATERIAL USED		
<u>12 yards</u>		

MARYLAND DEPARTMENT OF THE ENVIRONMENT, WATER MANAGEMENT ADMINISTRATION  
1800 Washington Blvd., Baltimore, Maryland 21230 (410) 537-3784

\*\*\*\*\*  
WATER WELL ABANDONMENT-SEALING REPORT FORM  
\*\*\*\*\*

SUBMIT COPIES OF COMPLETED FORM TO:

- \* COUNTY ENVIRONMENTAL AGENCY (contact MDE, WMA if address needed)
- \* WELL OWNER
- \* MDE, WATER MANAGEMENT ADMINISTRATION, WELL PROGRAM

DATE WELL ABANDONED: 9-24-13 (month/day/year)

CL - 95 - 0203  
MWD - FGL - 02

\* PERMIT NUMBER OF ABANDONED WELL (if any)

\* PERMIT NUMBER OF REPLACEMENT WELL:

\* PERSON ABANDONING WELL: Allen Compton

WELL DRILLER'S LICENSE NUMBER: 009

CIRCLE: MWD / MSD / MGD

\* OWNER'S NAME: Fogles Septic Clean, Inc.

\* WELL LOCATION:

COUNTY: Carroll County

NEAREST TOWN: Sylva

TAX MAP \_\_\_\_\_ BLOCK \_\_\_\_\_ PARCEL \_\_\_\_\_

SUBDIVISION: \_\_\_\_\_

SECTION: \_\_\_\_\_ LOT: \_\_\_\_\_

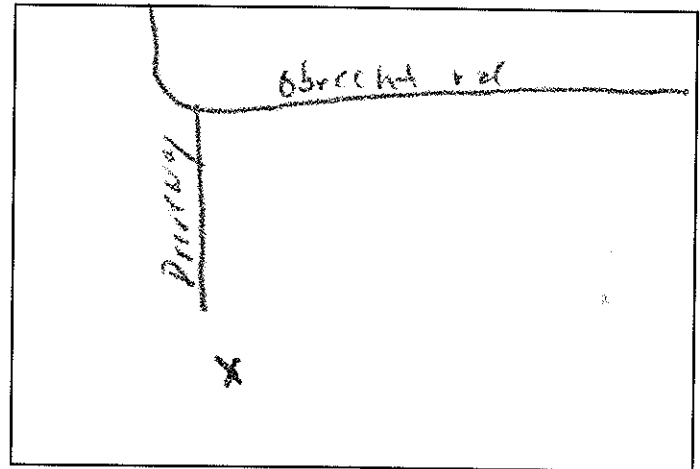
STREET ADDRESS: 580 Obrecht Rd

LATITUDE 39.382278

LONGITUDE 76.978573

Allen 95

SITE LOCATION MAP



\* TYPE OF WELL BEING ABANDONED:

☐ DRILLED ☐ JETTED  
☐ BORED ☐ HAND DUG

☒ OTHER (specify) monitoring well

\* USE CODE: DOMESTIC

☐ IRRIGATION ☐ MUNICIPAL/PUBLIC  
☒ TEST/OBSERVATION ☐ INDUSTRIAL  
☐ \_\_\_\_\_ ☐ GEOTHERMAL

\* TYPE OF CASING:

☒ STEEL ☐ PLASTIC  
☐ CONCRETE ☐ OTHER (specify) \_\_\_\_\_

SIZE OF CASING: 5 INCHES IN DIAMETER

DEPTH OF WELL: 60 FEET DEEP

WAS ANY CASING REMOVED? ☒ YES ☐ NO

If yes, length removed, in feet: 5

WAS CASING RIPPED OR PERFORATED? ☐ YES ☒ NO

LOG OF SEALING MATERIAL

MATERIAL	FEET	
	FROM	TO
<u>cement</u>	<u>0</u>	<u>60</u>
VOLUME OF MATERIAL USED		
<u>.5 yards</u>		

MARYLAND DEPARTMENT OF THE ENVIRONMENT, WATER MANAGEMENT ADMINISTRATION  
1800 Washington Blvd., Baltimore, Maryland 21230 (410) 537-3784

\*\*\*\*\*  
WATER WELL ABANDONMENT-SEALING REPORT FORM  
\*\*\*\*\*

SUBMIT COPIES OF COMPLETED FORM TO:

- \* COUNTY ENVIRONMENTAL AGENCY (contact MDE, WMA if address needed)
- \* WELL OWNER
- \* MDE, WATER MANAGEMENT ADMINISTRATION, WELL PROGRAM

DATE WELL ABANDONED: 9-24-13 (month/day/year)

\* PERMIT NUMBER OF ABANDONED WELL (if any)

MW-FGL-01

\* PERMIT NUMBER OF REPLACEMENT WELL:

\* PERSON ABANDONING WELL: Allen Seaborn

WELL DRILLER'S LICENSE NUMBER: 009

\* OWNER'S NAME: Fogles Septic Clean, Inc.

CIRCLE: MWD / MSD / MGD

\* WELL LOCATION:

COUNTY: Carroll

NEAREST TOWN: Summerville

TAX MAP            BLOCK            PARCEL           

SUBDIVISION:           

SECTION:            LOT:           

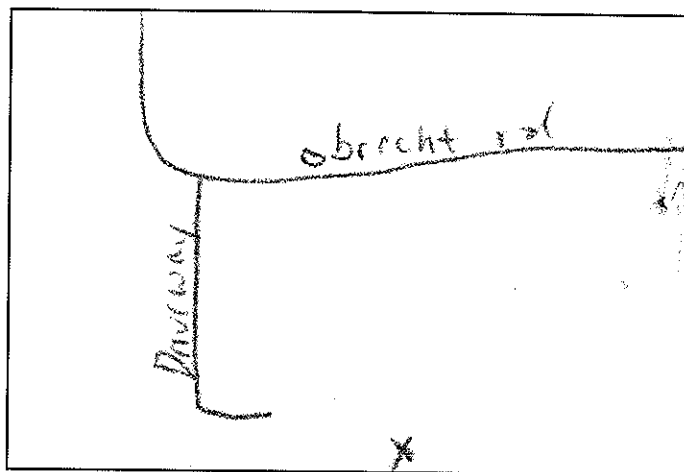
STREET ADDRESS: 580 Obrecht Rd

LATITUDE 3 9.382553

LONGITUDE 7 6.978745

*all 45*

SITE LOCATION MAP



\* TYPE OF WELL BEING ABANDONED:

           DRILLED            JETTED  
           BORED            HAND DUG  
☒ OTHER (specify) monitoring

\* USE CODE: DOMESTIC

           IRRIGATION            MUNICIPAL/PUBLIC  
☒ TEST/OBSERVATION            INDUSTRIAL  
                      GEOTHERMAL

\* TYPE OF CASING:

☒ STEEL            PLASTIC  
           CONCRETE            OTHER (specify)           

SIZE OF CASING: 5 INCHES IN DIAMETER

DEPTH OF WELL: 46 FEET DEEP

WAS ANY CASING REMOVED? ☒ YES            NO

If yes, length removed, in feet: 5

WAS CASING RIPPED OR PERFORATED?            YES ☒ NO

LOG OF SEALING MATERIAL

MATERIAL	FEET	
	FROM	TO
<u>CEMENT</u>	<u>0</u>	<u>46</u>
VOLUME OF MATERIAL USED		
<u>2.5 yards</u>		

MARYLAND DEPARTMENT OF THE ENVIRONMENT, WATER MANAGEMENT ADMINISTRATION  
1800 Washington Blvd., Baltimore, Maryland 21230 (410) 537-3784

\*\*\*\*\*  
WATER WELL ABANDONMENT-SEALING REPORT FORM  
\*\*\*\*\*

SUBMIT COPIES OF COMPLETED FORM TO:

- \* COUNTY ENVIRONMENTAL AGENCY (contact MDE, WMA if address needed)
- \* WELL OWNER
- \* MDE, WATER MANAGEMENT ADMINISTRATION, WELL PROGRAM

DATE WELL ABANDONED: 12-13-13 (month/day/year)

\* PERMIT NUMBER OF ABANDONED WELL (if any)

Tmw-A1 —

\* PERMIT NUMBER OF REPLACEMENT WELL:

\* PERSON ABANDONING WELL Allen Compton - Fogles WELL DRILLER'S LICENSE NUMBER: 009

CIRCLE: MWD / MSD / MGD

\* OWNER'S NAME: Fogles Septic Clean

\* WELL LOCATION:

COUNTY: Carroll

NEAREST TOWN: Sykesville

TAX MAP 0078 BLOCK 0003 PARCEL 0588

SUBDIVISION: \_\_\_\_\_

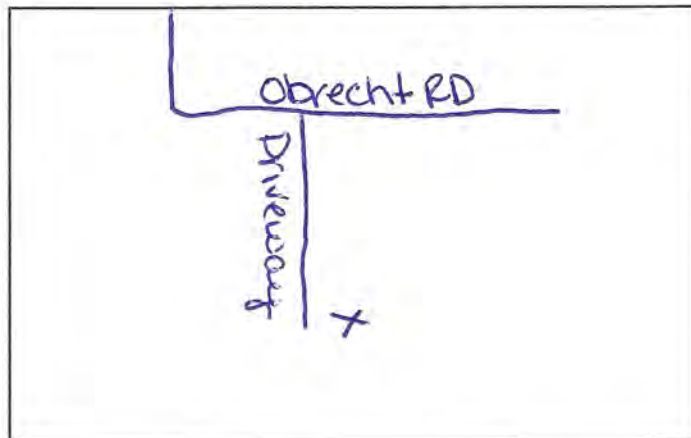
SECTION: \_\_\_\_\_ LOT: \_\_\_\_\_

STREET ADDRESS: 580 Obrecht Rd

LATITUDE 3 9 . 2 2 5 8 \_ \_

LONGITUDE 7 6 . 5 8 4 4 \_ \_

SITE LOCATION MAP



\* TYPE OF WELL BEING ABANDONED:

- ☒ DRILLED ☐ JETTED
- ☐ BORED ☐ HAND DUG
- ☐ OTHER (specify) \_\_\_\_\_

\* USE CODE:

- ☐ DOMESTIC ☐ MUNICIPAL/PUBLIC
- ☐ IRRIGATION ☐ INDUSTRIAL
- ☒ TEST/OBSERVATION ☐ GEOTHERMAL

\* TYPE OF CASING:

- ☒ STEEL ☐ PLASTIC
- ☐ CONCRETE ☐ OTHER (specify) \_\_\_\_\_

SIZE OF CASING: 1 INCHES IN DIAMETER

DEPTH OF WELL: 21 FEET DEEP

WAS ANY CASING REMOVED? YES ☒ NO

If yes, length removed, in feet: \_\_\_\_\_

WAS CASING RIPPED OR PERFORATED? YES ☒ NO

Allen Compton 009  
SIGNATURE-MASTER WELL DRILLER OR SUPERVISING SANITARIAN LICENSE#

LOG OF SEALING MATERIAL

MATERIAL	FEET	
	FROM	TO
Bentonite	0	21
VOLUME OF MATERIAL USED		
1 bag Bentonite		

MWD / MSD / MGS 12-13-13  
CIRCLE ONE DATE

MARYLAND DEPARTMENT OF THE ENVIRONMENT, WATER MANAGEMENT ADMINISTRATION  
1800 Washington Blvd., Baltimore, Maryland 21230 (410) 537-3784

\*\*\*\*\*  
WATER WELL ABANDONMENT-SEALING REPORT FORM  
\*\*\*\*\*

SUBMIT COPIES OF COMPLETED FORM TO:

- \* COUNTY ENVIRONMENTAL AGENCY (contact MDE, WMA if address needed)
- \* WELL OWNER
- \* MDE, WATER MANAGEMENT ADMINISTRATION, WELL PROGRAM

DATE WELL ABANDONED: 12-20-13 (month/day/year)

\* PERMIT NUMBER OF ABANDONED WELL (if any)

TMW A3 —

\* PERMIT NUMBER OF REPLACEMENT WELL:

\* PERSON ABANDONING WELL: Allen Compton - Fogles WELL DRILLER'S LICENSE NUMBER: 009

CIRCLE: MWD / MSD / MGD

\* OWNER'S NAME: Fogles Septic Clean

\* WELL LOCATION:

COUNTY: Carroll

NEAREST TOWN: Sykesville

TAX MAP 0078 BLOCK 0003 PARCEL 0588

SUBDIVISION: \_\_\_\_\_

SECTION: \_\_\_\_\_ LOT: \_\_\_\_\_

STREET ADDRESS: 580 Obrecht Rd

LATITUDE 3 9 . 2 2 5 5 - -

LONGITUDE 7 6 . 5 8 4 1 - -

SITE LOCATION MAP



\* TYPE OF WELL BEING ABANDONED:

\_\_\_\_ DRILLED \_\_\_\_\_ JETTED  
\_\_\_\_ BORED \_\_\_\_\_ HAND DUG  
\_\_\_\_ OTHER (specify) \_\_\_\_\_

\* USE CODE:

\_\_\_\_ DOMESTIC \_\_\_\_\_ MUNICIPAL/PUBLIC  
\_\_\_\_ IRRIGATION \_\_\_\_\_ INDUSTRIAL  
☒ TEST/OBSERVATION \_\_\_\_\_ GEOTHERMAL

\* TYPE OF CASING:

☒ STEEL \_\_\_\_\_ PLASTIC  
\_\_\_\_ CONCRETE \_\_\_\_\_ OTHER (specify) \_\_\_\_\_

SIZE OF CASING: 1" INCHES IN DIAMETER

DEPTH OF WELL: 12 FEET DEEP

WAS ANY CASING REMOVED? \_\_\_\_ YES ☒ NO

If yes, length removed, in feet: \_\_\_\_\_

WAS CASING RIPPED OR PERFORATED? \_\_\_\_ YES ☒ NO

Allen Compton 009  
SIGNATURE-MASTER WELL DRILLER OR SUPERVISING SANITARIAN LICENSE#

LOG OF SEALING MATERIAL

MATERIAL	FEET	
	FROM	TO
Bentonite	0	12
VOLUME OF MATERIAL USED		
1 bag Bentonite		

MWD / MSD / MGS

CIRCLE ONE

12-13-13

DATE

ORIGINAL

MARYLAND DEPARTMENT OF THE ENVIRONMENT, WATER MANAGEMENT ADMINISTRATION  
1800 Washington Blvd., Baltimore, Maryland 21230 (410) 537-3784

\*\*\*\*\*  
WATER WELL ABANDONMENT-SEALING REPORT FORM  
\*\*\*\*\*

SUBMIT COPIES OF COMPLETED FORM TO:

- \* COUNTY ENVIRONMENTAL AGENCY (contact MDE, WMA if address needed)
- \* WELL OWNER
- \* MDE, WATER MANAGEMENT ADMINISTRATION, WELL PROGRAM

DATE WELL ABANDONED: 12-13-13 (month/day/year)

\* PERMIT NUMBER OF ABANDONED WELL (if any)

Tmtw-A6

\* PERMIT NUMBER OF REPLACEMENT WELL:

\* PERSON ABANDONING WELL: Allen Compton - Fogle WELL DRILLER'S LICENSE NUMBER: 009

CIRCLE: MWD / MSD / MGD

\* OWNER'S NAME: Fogle Septic Clean

\* WELL LOCATION:

COUNTY: Carroll

NEAREST TOWN: Sylkesville

TAX MAP 008 BLOCK 0003 PARCEL 0588

SUBDIVISION:

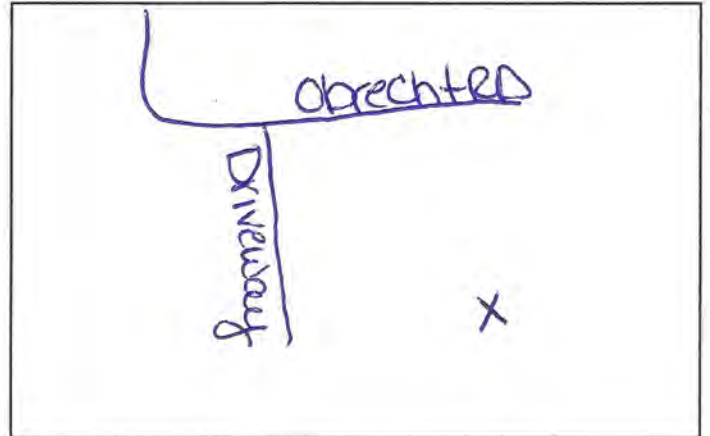
SECTION: LOT:

STREET ADDRESS: 580 Obrecht Rd

LATITUDE 3 9.2310

LONGITUDE 7 6.5850

SITE LOCATION MAP



\* TYPE OF WELL BEING ABANDONED:

- ☒ DRILLED ☐ JETTED
- ☐ BORED ☐ HAND DUG
- ☐ OTHER (specify) \_\_\_\_\_

\* USE CODE:

- ☐ DOMESTIC ☐ MUNICIPAL/PUBLIC
- ☒ IRRIGATION ☐ INDUSTRIAL
- ☒ TEST/OBSERVATION ☐ GEOTHERMAL

\* TYPE OF CASING:

- ☒ STEEL ☐ PLASTIC
- ☐ CONCRETE ☐ OTHER (specify) \_\_\_\_\_

SIZE OF CASING: 1" INCHES IN DIAMETER

DEPTH OF WELL: 15 FEET DEEP

WAS ANY CASING REMOVED? ☐ YES ☒ NO  
If yes, length removed, in feet: \_\_\_\_\_

WAS CASING RIPPED OR PERFORATED? ☐ YES ☒ NO

Allen Compton 009  
SIGNATURE-MASTER WELL DRILLER OR SUPERVISING SANITARIAN LICENSE#

LOG OF SEALING MATERIAL

MATERIAL	FEET	
	FROM	TO
Bentonite	0	15
VOLUME OF MATERIAL USED		
1 bag		

MWD / MSD / MGS 009  
CIRCLE ONE DATE 12/13/13

MARYLAND DEPARTMENT OF THE ENVIRONMENT, WATER MANAGEMENT ADMINISTRATION  
1800 Washington Blvd., Baltimore, Maryland 21230 (410) 537-3784

\*\*\*\*\*  
WATER WELL ABANDONMENT-SEALING REPORT FORM  
\*\*\*\*\*

SUBMIT COPIES OF COMPLETED FORM TO:

- \* COUNTY ENVIRONMENTAL AGENCY (contact MDE, WMA if address needed)
- \* WELL OWNER
- \* MDE, WATER MANAGEMENT ADMINISTRATION, WELL PROGRAM

DATE WELL ABANDONED: 12-13-13 (month/day/year)

\* PERMIT NUMBER OF ABANDONED WELL (if any)

TMW-A7

\* PERMIT NUMBER OF REPLACEMENT WELL:

\* PERSON ABANDONING WELL: Allen Compton - Fogles WELL DRILLER'S LICENSE NUMBER: 009

CIRCLE: MWD / MSD / MGD

\* OWNER'S NAME: Fogles Septic Clean

\* WELL LOCATION:  
COUNTY: Carroll

NEAREST TOWN: Sykesville

TAX MAP 0098 BLOCK 0003 PARCEL 0588

SUBDIVISION:

SECTION: LOT:

STREET ADDRESS: 580 Obrecht RD

LATITUDE 3 9 . 2 2 5 5 - -

LONGITUDE 7 6 . 5 8 4 2 - -

SITE LOCATION MAP



\* TYPE OF WELL BEING ABANDONED:

☒ DRILLED ☐ JETTED  
☐ BORED ☐ HAND DUG  
☐ OTHER (specify) \_\_\_\_\_

\* USE CODE:

☐ DOMESTIC ☐ MUNICIPAL/PUBLIC  
☐ IRRIGATION ☐ INDUSTRIAL  
☒ TEST/OBSERVATION ☐ GEOTHERMAL

\* TYPE OF CASING:

☒ STEEL ☐ PLASTIC  
☐ CONCRETE ☐ OTHER (specify) \_\_\_\_\_

SIZE OF CASING: 1 INCHES IN DIAMETER

DEPTH OF WELL: 25 FEET DEEP

WAS ANY CASING REMOVED? ☐ YES ☒ NO

If yes, length removed, in feet: \_\_\_\_\_

WAS CASING RIPPED OR PERFORATED? ☐ YES ☒ NO

SIGNATURE-MASTER WELL DRILLER OR SUPERVISING SANITARIAN Allen Compton LICENSE# 009

MWD / MSD / MGS

CIRCLE ONE

12-13-13

DATE



ORIGINAL

MARYLAND DEPARTMENT OF THE ENVIRONMENT, WATER MANAGEMENT ADMINISTRATION  
1800 Washington Blvd., Baltimore, Maryland 21230 (410) 537-3784

\*\*\*\*\*  
WATER WELL ABANDONMENT-SEALING REPORT FORM  
\*\*\*\*\*

SUBMIT COPIES OF COMPLETED FORM TO:

- \* COUNTY ENVIRONMENTAL AGENCY (contact MDE, WMA if address needed)
- \* WELL OWNER
- \* MDE, WATER MANAGEMENT ADMINISTRATION, WELL PROGRAM

DATE WELL ABANDONED: 1-20-13 (month/day/year)

\* PERMIT NUMBER OF ABANDONED WELL (if any)

Tmw-A8

\* PERMIT NUMBER OF REPLACEMENT WELL:

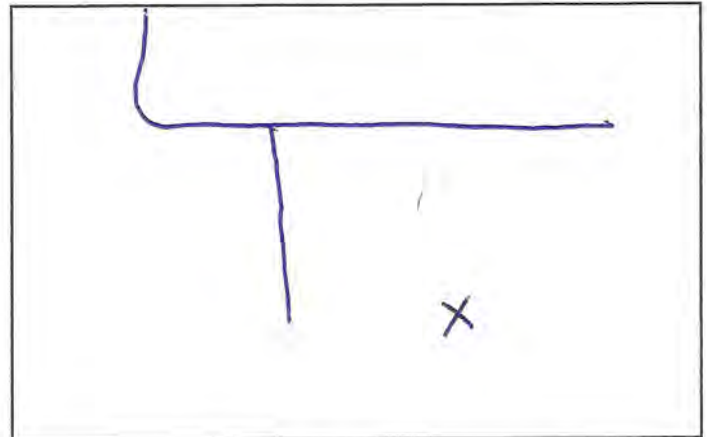
\* PERSON ABANDONING WELL: Allen Compton-Fogle WELL DRILLER'S LICENSE NUMBER: 009

CIRCLE: MWD / MSD / MGD

\* OWNER'S NAME: Fogles Septic Clean

\* WELL LOCATION:  
COUNTY: Carroll  
NEAREST TOWN: Sykesville  
TAX MAP 0078 BLOCK 0003 PARCEL 0588  
SUBDIVISION: \_\_\_\_\_  
SECTION: \_\_\_\_\_ LOT: \_\_\_\_\_  
STREET ADDRESS: 580 Obrecht Rd.

SITE LOCATION MAP



\* TYPE OF WELL BEING ABANDONED:  
☒ DRILLED ☐ JETTED  
☐ BORED ☐ HAND DUG  
☐ OTHER (specify) \_\_\_\_\_

\* USE CODE:  
☐ DOMESTIC ☐ MUNICIPAL/PUBLIC  
☐ IRRIGATION ☐ INDUSTRIAL  
☒ TEST/OBSERVATION ☐ GEOTHERMAL

\* TYPE OF CASING:  
☒ STEEL ☐ PLASTIC  
☐ CONCRETE ☐ OTHER (specify) \_\_\_\_\_

SIZE OF CASING: 1 INCHES IN DIAMETER

DEPTH OF WELL: 25 FEET DEEP

WAS ANY CASING REMOVED? ☐ YES ☒ NO  
If yes, length removed, in feet: \_\_\_\_\_

WAS CASING RIPPED OR PERFORATED? ☐ YES ☒ NO

LOG OF SEALING MATERIAL

MATERIAL	FEET	
	FROM	TO
Bentonite	0	25
VOLUME OF MATERIAL USED		
1 bag Bentonite		

SIGNATURE-MASTER WELL DRILLER OR SUPERVISING SANITARIAN LICENSE#

MWD / MSD / MGS

CIRCLE ONE

DATE



ORIGINAL

MARYLAND DEPARTMENT OF THE ENVIRONMENT, WATER MANAGEMENT ADMINISTRATION  
1800 Washington Blvd., Baltimore, Maryland 21230 (410) 537-3784

\*\*\*\*\*  
WATER WELL ABANDONMENT-SEALING REPORT FORM  
\*\*\*\*\*

SUBMIT COPIES OF COMPLETED FORM TO:

- \* COUNTY ENVIRONMENTAL AGENCY (contact MDE, WMA if address needed)
- \* WELL OWNER
- \* MDE, WATER MANAGEMENT ADMINISTRATION, WELL PROGRAM

DATE WELL ABANDONED: 9-25-13 (month/day/year)

\* PERMIT NUMBER OF ABANDONED WELL (if any)

TMW-B1

\* PERMIT NUMBER OF REPLACEMENT WELL:

\* PERSON ABANDONING WELL: Allen Compton-Fogles WELL DRILLER'S LICENSE NUMBER: 009

CIRCLE: MWD / MSD / MGD

\* OWNER'S NAME: Fogles Septic Clean, Inc.

\* WELL LOCATION:

COUNTY: Carroll

NEAREST TOWN: Sykesville

TAX MAP 0078 BLOCK 0003 PARCEL 0588

SUBDIVISION:

SECTION: LOT:

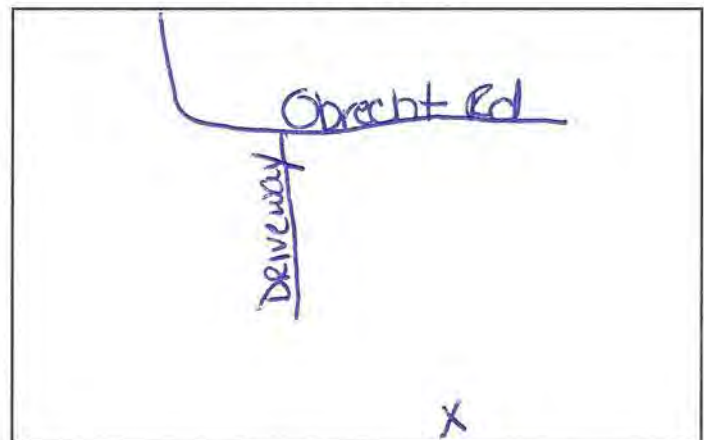
STREET ADDRESS: 580 Obrecht Rd

LATITUDE 3 9 . 3 8 4 5 4 8

LONGITUDE 7 6 . 9 7 7 5 6 2

Allen Compton-Fogles

SITE LOCATION MAP



\* TYPE OF WELL BEING ABANDONED:

☒ DRILLED ☐ JETTED  
☐ BORED ☐ HAND DUG  
☐ OTHER (specify) \_\_\_\_\_

\* USE CODE:

☐ DOMESTIC ☐ MUNICIPAL/PUBLIC  
☒ IRRIGATION ☐ INDUSTRIAL  
☒ TEST/OBSERVATION ☐ GEOTHERMAL

\* TYPE OF CASING:

☒ STEEL ☐ PLASTIC  
☐ CONCRETE ☐ OTHER (specify) \_\_\_\_\_

SIZE OF CASING: 5 INCHES IN DIAMETER

DEPTH OF WELL: 9 FEET DEEP

WAS ANY CASING REMOVED? YES ☒ NO

If yes, length removed, in feet: \_\_\_\_\_

WAS CASING RIPPED OR PERFORATED? YES ☒ NO

LOG OF SEALING MATERIAL

MATERIAL	FEET	
	FROM	TO
Cement	0	9
VOLUME OF MATERIAL USED		
5 bags		

MWD / MSD / MGS

SIGNATURE-MASTER WELL DRILLER OR SUPERVISING SANITARIAN LICENSE#

CIRCLE ONE

DATE



ORIGINAL

MARYLAND DEPARTMENT OF THE ENVIRONMENT, WATER MANAGEMENT ADMINISTRATION  
1800 Washington Blvd., Baltimore, Maryland 21230 (410) 537-3784

\*\*\*\*\*  
WATER WELL ABANDONMENT-SEALING REPORT FORM  
\*\*\*\*\*

SUBMIT COPIES OF COMPLETED FORM TO:

- \* COUNTY ENVIRONMENTAL AGENCY (contact MDE, WMA if address needed)
- \* WELL OWNER
- \* MDE, WATER MANAGEMENT ADMINISTRATION, WELL PROGRAM

DATE WELL ABANDONED: 9-25-13 (month/day/year)

\* PERMIT NUMBER OF ABANDONED WELL (if any)

TMW B2

\* PERMIT NUMBER OF REPLACEMENT WELL:

\* PERSON ABANDONING WELL: Allen Compton - Fogles WELL DRILLER'S LICENSE NUMBER: 009  
CIRCLE: MWD / MSD / MGD

\* OWNER'S NAME: Fogles Septic Clean, Inc.

\* WELL LOCATION:

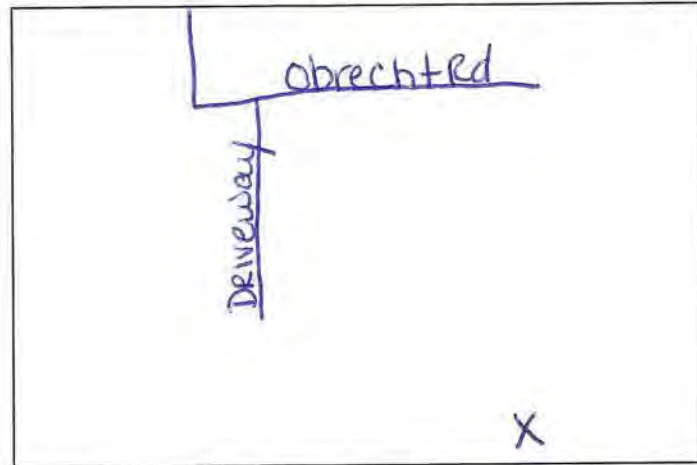
COUNTY: Carroll  
NEAREST TOWN: Sykesville  
TAX MAP 0078 BLOCK 0003 PARCEL 0588  
SUBDIVISION: \_\_\_\_\_  
SECTION: \_\_\_\_\_ LOT: \_\_\_\_\_  
STREET ADDRESS: 580 Obrecht Rd

LATITUDE 39.384579

LONGITUDE 76.977448

Allen Compton

SITE LOCATION MAP



\* TYPE OF WELL BEING ABANDONED:  
☒ DRILLED ☐ JETTED  
☐ BORED ☐ HAND DUG  
☐ OTHER (specify) \_\_\_\_\_

\* USE CODE: DOMESTIC ☐ MUNICIPAL/PUBLIC  
☒ IRRIGATION ☐ INDUSTRIAL  
☐ TEST/OBSERVATION ☐ GEOTHERMAL

\* TYPE OF CASING:  
☒ STEEL ☐ PLASTIC  
☐ CONCRETE ☐ OTHER (specify) \_\_\_\_\_

SIZE OF CASING: 5 INCHES IN DIAMETER

DEPTH OF WELL: 16 FEET DEEP

WAS ANY CASING REMOVED? ☐ YES ☒ NO  
If yes, length removed, in feet: \_\_\_\_\_

WAS CASING RIPPED OR PERFORATED? ☐ YES ☒ NO

LOG OF SEALING MATERIAL

MATERIAL	FEET	
	FROM	TO
Cement	0	16
VOLUME OF MATERIAL USED		
8 bags		

MARYLAND DEPARTMENT OF THE ENVIRONMENT, WATER MANAGEMENT ADMINISTRATION  
1800 Washington Blvd., Baltimore, Maryland 21230 (410) 537-3784

\*\*\*\*\*  
WATER WELL ABANDONMENT-SEALING REPORT FORM  
\*\*\*\*\*

SUBMIT COPIES OF COMPLETED FORM TO:

- \* COUNTY ENVIRONMENTAL AGENCY (contact MDE, WMA if address needed)
- \* WELL OWNER
- \* MDE, WATER MANAGEMENT ADMINISTRATION, WELL PROGRAM

DATE WELL ABANDONED: 12-13-13 (month/day/year)

\* PERMIT NUMBER OF ABANDONED WELL (if any)

TMW-CL

\* PERMIT NUMBER OF REPLACEMENT WELL:

\* PERSON ABANDONING WELL: Allen Compton Fogles WELL DRILLER'S LICENSE NUMBER: 009

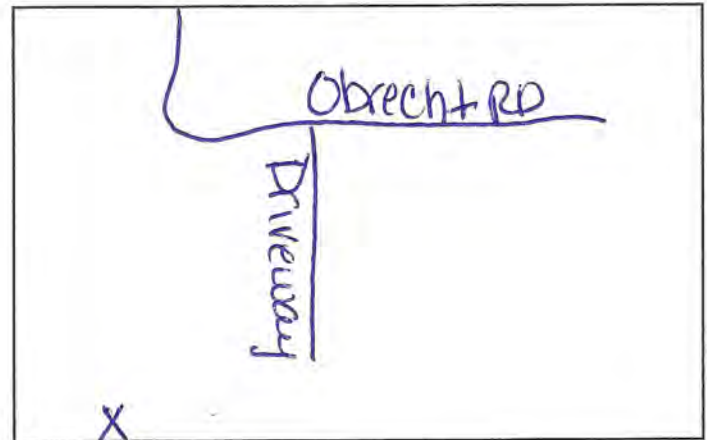
CIRCLE: MWD / MSD / MGD

\* OWNER'S NAME: Fogles Septic Clean

\* WELL LOCATION:

SITE LOCATION MAP

COUNTY: Cecil  
NEAREST TOWN: Sylkesville  
TAX MAP 0008 BLOCK 0003 PARCEL 0588  
SUBDIVISION: \_\_\_\_\_  
SECTION: \_\_\_\_\_ LOT: \_\_\_\_\_  
STREET ADDRESS: 580 Obrecht RD



LATITUDE 39.2417 - -

LONGITUDE 76.5813 - -

\* TYPE OF WELL BEING ABANDONED:

☒ DRILLED ☐ JETTED  
☐ BORED ☐ HAND DUG  
☐ OTHER (specify) \_\_\_\_\_

\* USE CODE:

☐ DOMESTIC ☐ MUNICIPAL/PUBLIC  
☐ IRRIGATION ☐ INDUSTRIAL  
☒ TEST/OBSERVATION ☐ GEOTHERMAL

\* TYPE OF CASING:

☒ STEEL ☐ PLASTIC  
☐ CONCRETE ☐ OTHER (specify) \_\_\_\_\_

SIZE OF CASING: 1 INCHES IN DIAMETER

DEPTH OF WELL: 25 FEET DEEP

WAS ANY CASING REMOVED? ☐ YES ☒ NO  
If yes, length removed, in feet: \_\_\_\_\_

WAS CASING RIPPED OR PERFORATED? ☐ YES ☒ NO

Allen Compton 009  
SIGNATURE-MASTER WELL DRILLER OR SUPERVISING SANITARIAN LICENSE#

LOG OF SEALING MATERIAL

MATERIAL	FEET	
	FROM	TO
Bentonite	0	25
VOLUME OF MATERIAL USED		
1 Bag		

MWD / MSD MGS  
CIRCLE ONE

12-13-13 \*  
DATE

MARYLAND DEPARTMENT OF THE ENVIRONMENT, WATER MANAGEMENT ADMINISTRATION  
1800 Washington Blvd., Baltimore, Maryland 21230 (410) 537-3784

\*\*\*\*\*  
WATER WELL ABANDONMENT-SEALING REPORT FORM  
\*\*\*\*\*

SUBMIT COPIES OF COMPLETED FORM TO:

- \* COUNTY ENVIRONMENTAL AGENCY (contact MDE, WMA if address needed)
- \* WELL OWNER
- \* MDE, WATER MANAGEMENT ADMINISTRATION, WELL PROGRAM

DATE WELL ABANDONED: 12-13-13 (month/day/year)

\* PERMIT NUMBER OF ABANDONED WELL (if any) Tmtw-C2

\* PERMIT NUMBER OF REPLACEMENT WELL: \_\_\_\_\_

\* PERSON ABANDONING WELL: Allen-Fogles WELL DRILLER'S LICENSE NUMBER: 009  
CIRCLE: MWD / MSD / MGD

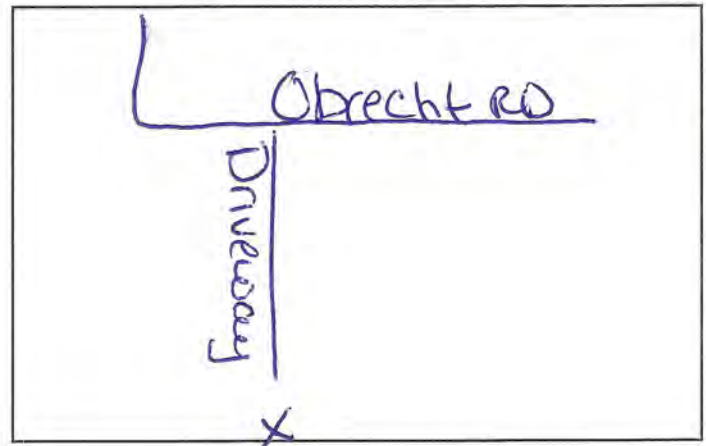
\* OWNER'S NAME: Fogles Septic Clean

\* WELL LOCATION:  
COUNTY: Carroll  
NEAREST TOWN: Sykesville  
TAX MAP 0008 BLOCK 0003 PARCEL 0588  
SUBDIVISION: \_\_\_\_\_  
SECTION: \_\_\_\_\_ LOT: \_\_\_\_\_  
STREET ADDRESS: 580 Obrecht Rd

LATITUDE 3 9 . 22 1 7 - -

LONGITUDE 7 6 . 5 7 1 2 - -

SITE LOCATION MAP



\* TYPE OF WELL BEING ABANDONED:  
☒ DRILLED ☐ JETTED  
☐ BORED ☐ HAND DUG  
☐ OTHER (specify) \_\_\_\_\_

\* USE CODE:  
☐ DOMESTIC ☐ MUNICIPAL/PUBLIC  
☐ IRRIGATION ☐ INDUSTRIAL  
☒ TEST/OBSERVATION ☐ GEOTHERMAL

\* TYPE OF CASING:  
☒ STEEL ☐ PLASTIC  
☐ CONCRETE ☐ OTHER (specify) \_\_\_\_\_

SIZE OF CASING: 1 INCHES IN DIAMETER

DEPTH OF WELL: 25 FEET DEEP


WAS ANY CASING REMOVED? ☐ YES ☒ NO  
If yes, length removed, in feet: \_\_\_\_\_

WAS CASING RIPPED OR PERFORATED? ☐ YES ☒ NO

Allen Comp  
SIGNATURE-MASTER WELL DRILLER OR SUPERVISING SANITARIAN LICENSE#

LOG OF SEALING MATERIAL

MATERIAL	FEET	
	FROM	TO
Bentonite	0	25
VOLUME OF MATERIAL USED		
1 bag		

009 MWD / MSD / MGS 12-13-13   
CIRCLE ONE DATE

MARYLAND DEPARTMENT OF THE ENVIRONMENT, WATER MANAGEMENT ADMINISTRATION  
1800 Washington Blvd., Baltimore, Maryland 21230 (410) 537-3784

\*\*\*\*\*  
WATER WELL ABANDONMENT-SEALING REPORT FORM  
\*\*\*\*\*

SUBMIT COPIES OF COMPLETED FORM TO:

- \* COUNTY ENVIRONMENTAL AGENCY (contact MDE, WMA if address needed)
- \* WELL OWNER
- \* MDE, WATER MANAGEMENT ADMINISTRATION, WELL PROGRAM

DATE WELL ABANDONED: 12-13-13 (month/day/year)

\* PERMIT NUMBER OF ABANDONED WELL (if any)

TMAW-Ft

\* PERMIT NUMBER OF REPLACEMENT WELL:

\* PERSON ABANDONING WELL: Allen - Fogles WELL DRILLER'S LICENSE NUMBER: 009

CIRCLE: MWD / MSD / MGD

\* OWNER'S NAME: Fogles Septic Clean

\* WELL LOCATION:

COUNTY: Carroll

NEAREST TOWN: Sykesville

TAX MAP 0008 BLOCK 0003 PARCEL 0588

SUBDIVISION:

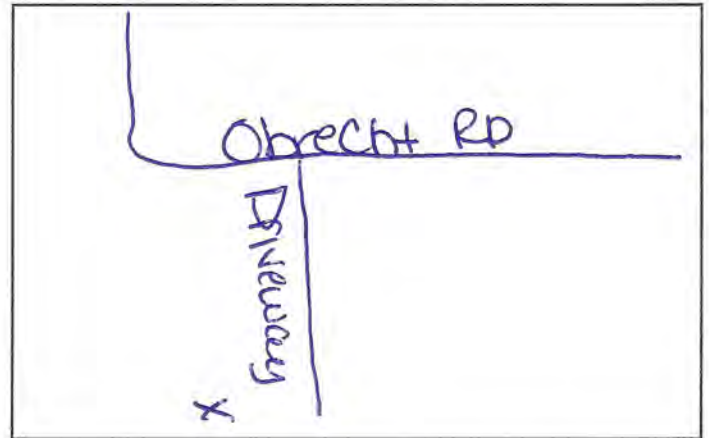
SECTION: LOT:

STREET ADDRESS: 580 Obrecht Rd

LATITUDE 3 9 . 23 18 - -

LONGITUDE 7 6 . 57 37 - -

SITE LOCATION MAP



\* TYPE OF WELL BEING ABANDONED:

- ☒ DRILLED ☐ JETTED
- ☐ BORED ☐ HAND DUG
- ☐ OTHER (specify) \_\_\_\_\_

\* USE CODE:

- ☐ DOMESTIC ☐ MUNICIPAL/PUBLIC
- ☐ IRRIGATION ☐ INDUSTRIAL
- ☒ TEST/OBSERVATION ☐ GEOTHERMAL

\* TYPE OF CASING:

- ☒ STEEL ☐ PLASTIC
- ☐ CONCRETE ☐ OTHER (specify) \_\_\_\_\_

SIZE OF CASING: 1 INCHES IN DIAMETER

DEPTH OF WELL: 25 FEET DEEP

WAS ANY CASING REMOVED? YES ☒ NO

If yes, length removed, in feet: \_\_\_\_\_

WAS CASING RIPPED OR PERFORATED? YES ☒ NO

Allen Comp  
SIGNATURE-MASTER WELL DRILLER OR SUPERVISING SANITARIAN LICENSE#

009

MWD / MSD / MGS

CIRCLE ONE

12-13-13

DATE

LOG OF SEALING MATERIAL

MATERIAL	FEET	
	FROM	TO
Bentonite	0	25
VOLUME OF MATERIAL USED		
1 bag		

MARYLAND DEPARTMENT OF THE ENVIRONMENT, WATER MANAGEMENT ADMINISTRATION  
1800 Washington Blvd., Baltimore, Maryland 21230 (410) 537-3784

\*\*\*\*\*  
WATER WELL ABANDONMENT-SEALING REPORT FORM  
\*\*\*\*\*

SUBMIT COPIES OF COMPLETED FORM TO:

- \* COUNTY ENVIRONMENTAL AGENCY (contact MDE, WMA if address needed)
- \* WELL OWNER
- \* MDE, WATER MANAGEMENT ADMINISTRATION, WELL PROGRAM

DATE WELL ABANDONED: 12-13-13 (month/day/year)

\* PERMIT NUMBER OF ABANDONED WELL (if any)

TMW F2-

\* PERMIT NUMBER OF REPLACEMENT WELL:

\* PERSON ABANDONING WELL: Allen - Fogles WELL DRILLER'S LICENSE NUMBER: 009

CIRCLE: MWD / MSD / MGD

\* OWNER'S NAME: Fogles Septic Clean

\* WELL LOCATION:

COUNTY: Carroll

NEAREST TOWN: Sykesville

TAX MAP 0008 BLOCK 0003 PARCEL 0588

SUBDIVISION: \_\_\_\_\_

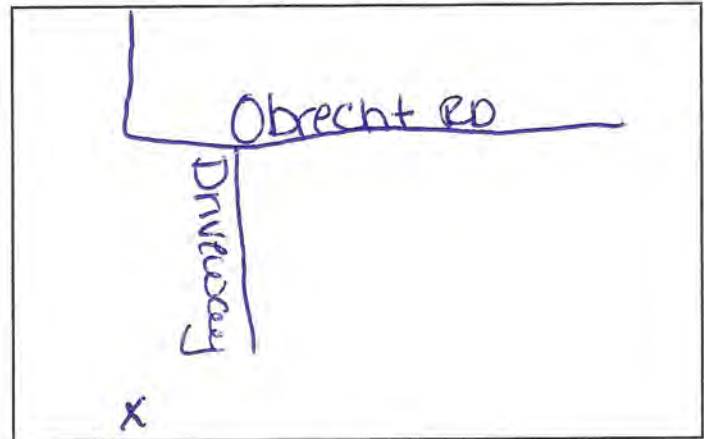
SECTION: \_\_\_\_\_ LOT: \_\_\_\_\_

STREET ADDRESS: 580 Obrecht Rd

LATITUDE 3 9 . 2 2 2 1 - -

LONGITUDE 7 6 . 5 7 1 4 - -

SITE LOCATION MAP



\* TYPE OF WELL BEING ABANDONED:

☒ DRILLED ☐ JETTED  
☐ BORED ☐ HAND DUG  
☐ OTHER (specify) \_\_\_\_\_

\* USE CODE:

☐ DOMESTIC ☐ MUNICIPAL/PUBLIC  
☐ IRRIGATION ☐ INDUSTRIAL  
☒ TEST/OBSERVATION ☐ GEOTHERMAL

\* TYPE OF CASING:

☒ STEEL ☐ PLASTIC  
☐ CONCRETE ☐ OTHER (specify) \_\_\_\_\_

SIZE OF CASING: 1 INCHES IN DIAMETER

DEPTH OF WELL: 19 FEET DEEP

WAS ANY CASING REMOVED? ☐ YES ☒ NO  
If yes, length removed, in feet: \_\_\_\_\_

WAS CASING RIPPED OR PERFORATED? ☐ YES ☒ NO

Allen Comp  
SIGNATURE-MASTER WELL DRILLER OR SUPERVISING SANITARIAN LICENSE# 009

LOG OF SEALING MATERIAL

MATERIAL	FEET	
	FROM	TO
Bentonite	0	19
VOLUME OF MATERIAL USED		
1 bag		

MWD / MSD / MGS  
CIRCLE ONE

12-13  
DATE

ORIGINAL

*Appendix D - Dam Removal  
Photographic Log*



## PHOTOGRAPHIC LOG

**Client Name:**  
Fogles Septic Clean, Inc.

**Site Location:**  
Sykesville, MD

**Project No.**  
0032112

**Photo No.**  
**1**

**Date:**  
8/13/13

**Direction Photo**  
**Taken: NW**

**Description:**

Wier condition prior  
to deconstructing.



**Photo No.**  
**2**

**Date:**  
8/13/13

**Direction Photo:** NW

**Description:**

Water slowly being  
released to prevent  
sediment release and  
clouding of water  
down stream.





## PHOTOGRAPHIC LOG

**Client Name:**  
Fogles Septic Clean, Inc.

**Site Location:**  
Sykesville, MD

**Project No.**  
0032112

**Photo No.**  
**3**

**Date:**  
8/13/13

**Direction Photo**  
**Taken: West/SW**

**Description:**

Water retained behind  
weir during release.  
Prior rain event during  
the week has created  
cloudiness, water is  
typically clear.



**Photo No.**  
**4**

**Date:**  
8/13/13

**Direction Photo**  
**Taken: NW**


**Description:**

Continue to slowly  
lower water level for  
weir removal.





## PHOTOGRAPHIC LOG

<b>Client Name:</b> Fogles Septic Clean, Inc.		<b>Site Location:</b> Sykesville, MD	<b>Project No.</b> 0032112
<b>Photo No.</b> <b>5</b>	<b>Date:</b> 8/13/13		
<b>Direction Photo Taken:</b> West			
<b>Description:</b>  Water level has dropped approximately 2 feet.			

<b>Photo No.</b> <b>6</b>	<b>Date:</b> 8/13/13	
<b>Direction Photo Taken:</b> West		
<b>Description:</b>  Water level has dropped enough to start weir removal. Straw bales in place to limit the sediment intrusion to areas down stream.		



## PHOTOGRAPHIC LOG



<b>Client Name:</b> Fogles Septic Clean, Inc.		<b>Site Location:</b> Sykesville, MD	<b>Project No.</b> 0032112
<b>Photo No.</b> 7	<b>Date:</b> 8/13/13		
<b>Direction Photo Taken:</b> West			
<b>Description:</b>  Geo liner being cut out in addition to the drains being removed.			

Photo No. 8	Date: 8/13/13	
Direction Photo Taken: North		
Description:  6" PVC drains removed from weir.		



## PHOTOGRAPHIC LOG

<b>Client Name:</b> Fogles Septic Clean, Inc.		<b>Site Location:</b> Sykesville, MD	<b>Project No.</b> 0032112
<b>Photo No.</b> <b>9</b>	<b>Date:</b> 8/13/13		
<b>Direction Photo Taken:</b> North			
<b>Description:</b>  Shoreline with removed material piled for pick up after removal is complete.			

<b>Photo No.</b> <b>10</b>	<b>Date:</b> 8/13/13	
<b>Direction Photo Taken:</b> NW		
<b>Description:</b>  Weir removal is complete. Some sand bags and liner left in place to prevent shoreline erosion.		



## PHOTOGRAPHIC LOG

**Client Name:**  
Fogles Septic Clean, Inc.

**Site Location:**  
Sykesville, MD

**Project No.**  
0032112

**Photo No.**  
**11**

**Date:**  
8/13/13

**Direction Photo**  
**Taken: West**

**Description:**

View of completed removal. Sediment will gradually disperse over time.



**Photo No.**  
**12**

**Date:**  
8/13/13

**Direction Photo**  
**Taken: NW**

**Description:**

Straw bails left in place to control sediment. They will be removed at a later date.



*Appendix E - MDE Dam  
Removal Letter*

# MARYLAND DEPARTMENT OF THE ENVIRONMENT

1800 Washington Boulevard, Suite 620 • Baltimore Maryland 21230-1719  
(410) 537-3442 • 1-800-633-6101 • [http:// www. mde. state. md. us](http://www.mde.state.md.us)

## LAND MANAGEMENT ADMINISTRATION

### Oil Control Program

### Report of Observations

Case # 04-1496CL

Date: 8/13/2013

Facility ID #

Type of Inspection/Observations: Site visit- Removal of check dam from unnamed tributary

Page #: 1 of 1

Site/Facility Name: Fogle's Septic Clean Inc.

Location: 588 Obrect Road Sykesville Maryland

Remarks: On this date, this geologist was on-site with personnel from Fogle's and Environmental Resource Management to observe the removal of the check dam that was previously installed on the unnamed tributary to Liberty Reservoir. The check dam was constructed of polyvinyl liner material, sand bags, and had three six inch PVC pipes to control discharge. On this date the water behind the check dam was clear and there was no evidence of a historic petroleum release at this location. Personnel from Fogle's placed two straw bales in the stream channel and downstream of the dam to control sediment flow. The sand bags were then removed from the face of the dam, only a few at a time, to allow a small quantity of water to exit the dam and while controlling the amount of sediment in the stream The vinyl was slowly cut away from the dam and additional sand bags removed. The PVC pipes were removed as the water level dropped. It was determine that some of the vinyl should remain in place to eliminate significant disturbance to the banks of the stream. The straw bales were effective at controlling the sediment load and will remain in place to further control sediment due to pending rain.

MDE Observer: Jim Richmond

Signature: \_\_\_\_\_

Person Interviewed (print): C. McKellan (ERM)

Signature: \_\_\_\_\_

MARYLAND DEPARTMENT of the ENVIRONMENT

**JIM RICHMOND**

OIL CONTROL PROGRAM

Waste Management Administration

[jrichmond@mde.state.md.us](mailto:jrichmond@mde.state.md.us)

1800 Washington Blvd., Ste. 620 Phone: 410-537-3337  
Baltimore MD 21230-1719 Fax: 410-537-3092

Toll Free: 1-800-633-6101 • [www.mde.state.md.us](http://www.mde.state.md.us)

Printed with Soy Ink on 30% Recycled Post Consumer ECF Paper

