

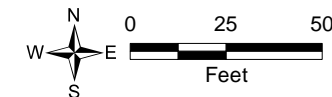


#### JUNE-2011 EPA/SESD

- Soil Sample
- Pump House Waste
- Tank Waste

#### JULY-2010 GEL

- Pump House Oily Waste
- Tank Oily Waste
- Site Boundary



Sample exceeds 40 CFR 761.60,  
disposal of PCB waste:  $\geq 50$ ppm

Sample exceeds RML for  
Industrial Soil:  $\approx 74$ ppm

#### Notes:

DM - Delta Mills  
EPA - Environmental Protection Agency  
GEL - GEL Engineering, LLC  
I-5 - Mixture of Aroclors in sample,  
Predominant Aroclor reported  
J - Identification of the analyte is  
acceptable; The reported value  
is an estimate  
PCB - Polychlorinated biphenyls  
ppm - Parts per million  
RML - Removal management level  
SESD - Science Ecosystem and Support  
Division

#### Map Source:

Aerial Photo, Bing 201--2012.



United States  
Environmental Protection Agency  
Region 4

### FIGURE 1

Previous Sampling Locations  
and Results Exceeding RMLs  
or Disposal Criteria

**TDD Name:** Delta Mills

**TDD No.:** TTEMI-05-003-0165

**City:**  
Wallace

**County:**  
Marlboro

**State:**  
South Carolina



**TETRA TECH**

**Date:**  
9/18/2013  
**Analyst:**  
dale.vonbusch