

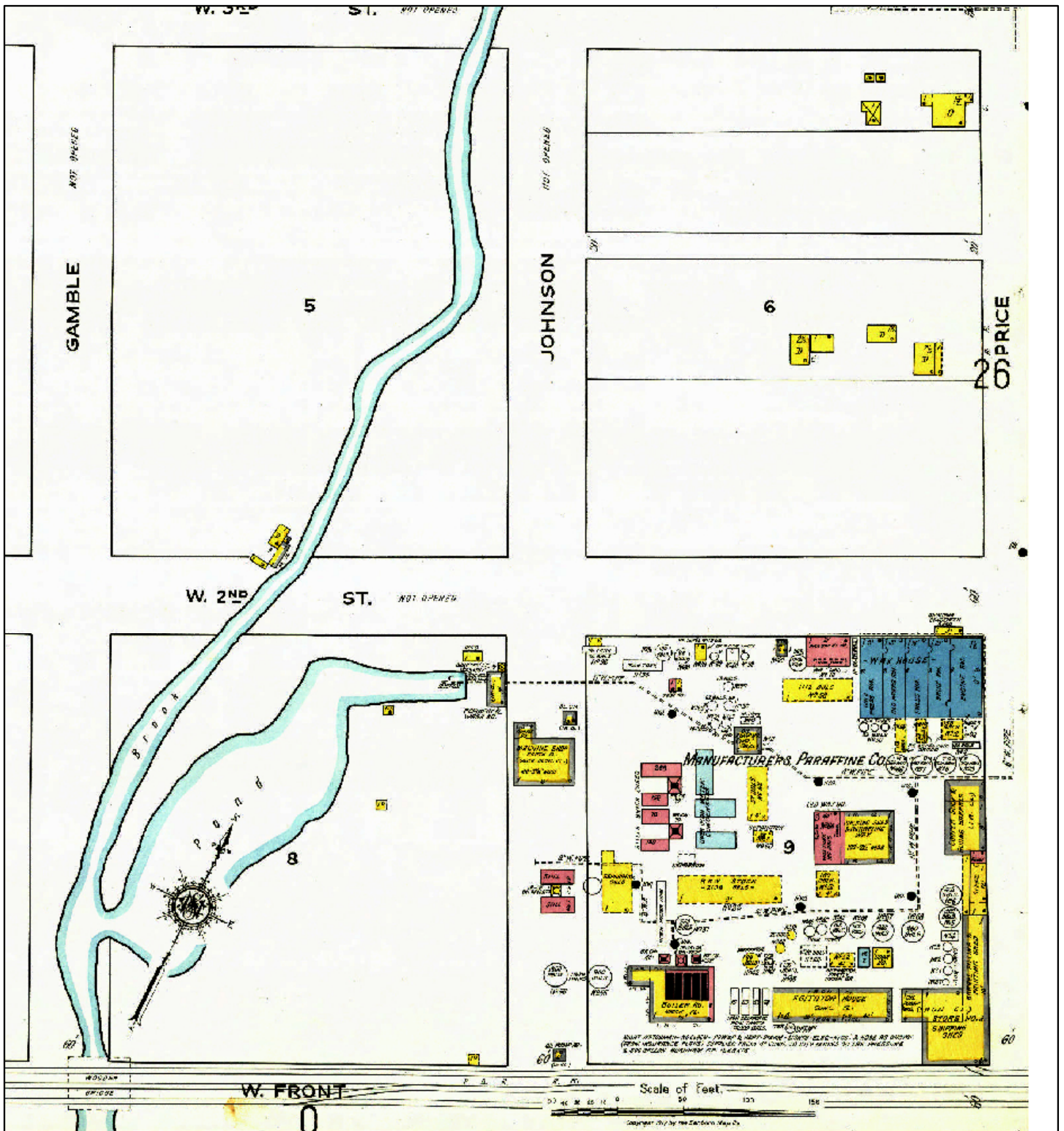
Imagery: Hexamer General Surveys,
Chester Pa, 1891



Metro Container, 200 Price Street
Trainer, PA

Figure x-x
Hexamer Fire Insurance Map
Delaware Oil Works





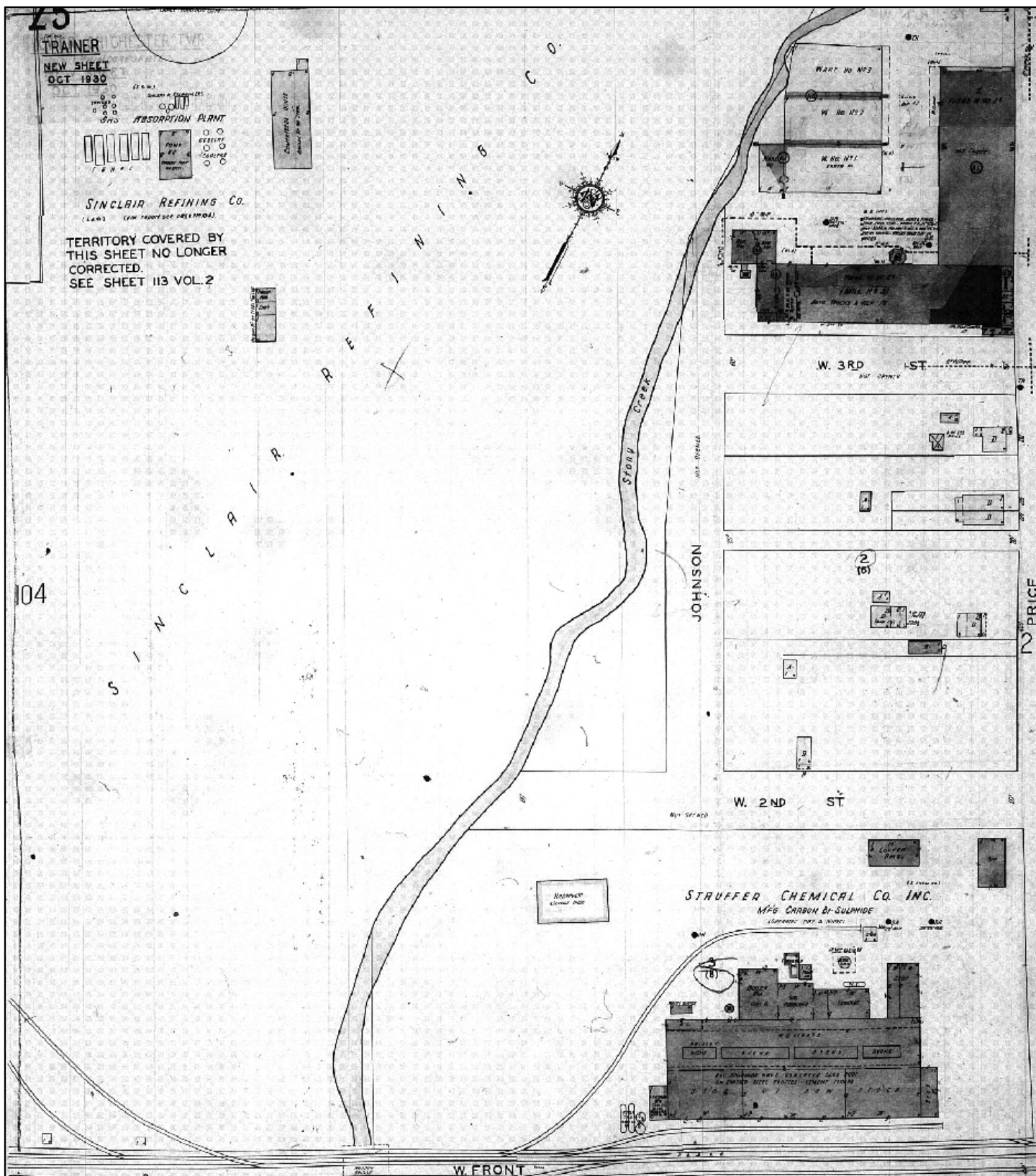
Sanborn Imagery: The Sanborn Map Company,
Chester Pa, 1917



Metro Container, 200 Price Street
Trainer, PA

Figure x-x
Sanborne Fire Insurance Map
Manufacturers Paraffine
Company





Sanborn Imagery: The Sanborn Map Company,
Chester Pa, 1930

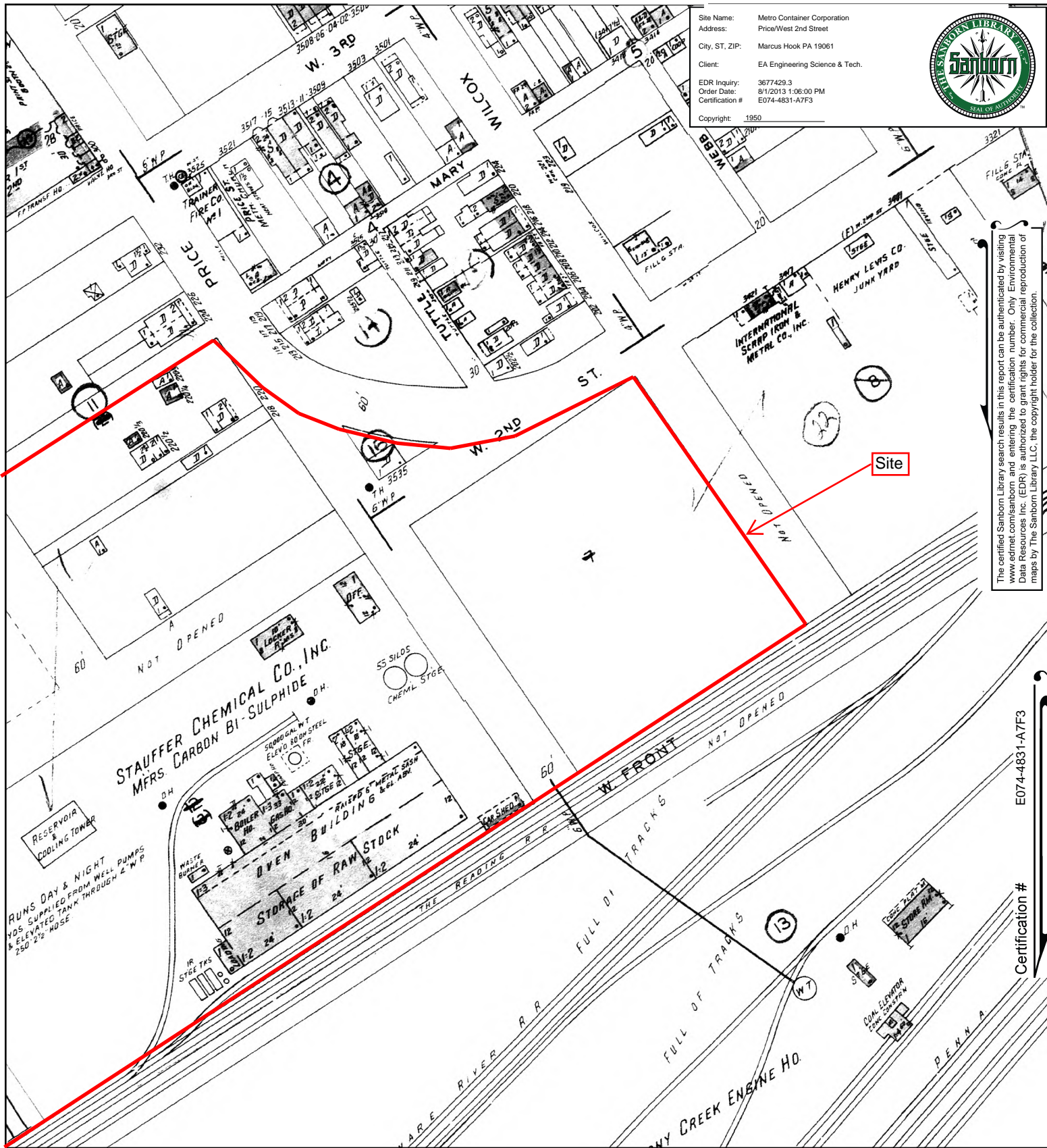


Metro Container, 200 Price Street
Trainer, PA

Figure x-x
Sanborne Fire Insurance Map
Stauffer Chemical Company



1950 Certified Sanborn Map



Site Name: Metro Container Corporation
 Address: Price/West 2nd Street
 City, ST, ZIP: Marcus Hook PA 19061
 Client: EA Engineering Science & Tech.
 EDR Inquiry: 3677429.3
 Order Date: 8/1/2013 1:06:00 PM
 Certification #: E074-4831-A7F3
 Copyright: 1950

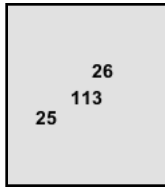
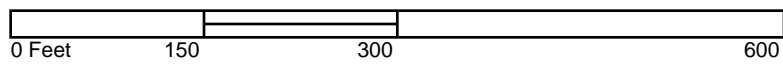


The certified Sanborn Library search results in this report can be authenticated by visiting
 www.ednet.com/sanborn and entering the certification number. Only Environmental
 Data Resources Inc. (EDR) is authorized to grant rights for commercial reproduction of
 maps by The Sanborn Library LLC, the copyright holder for the collection.

E074-4831-A7F3

Certification #

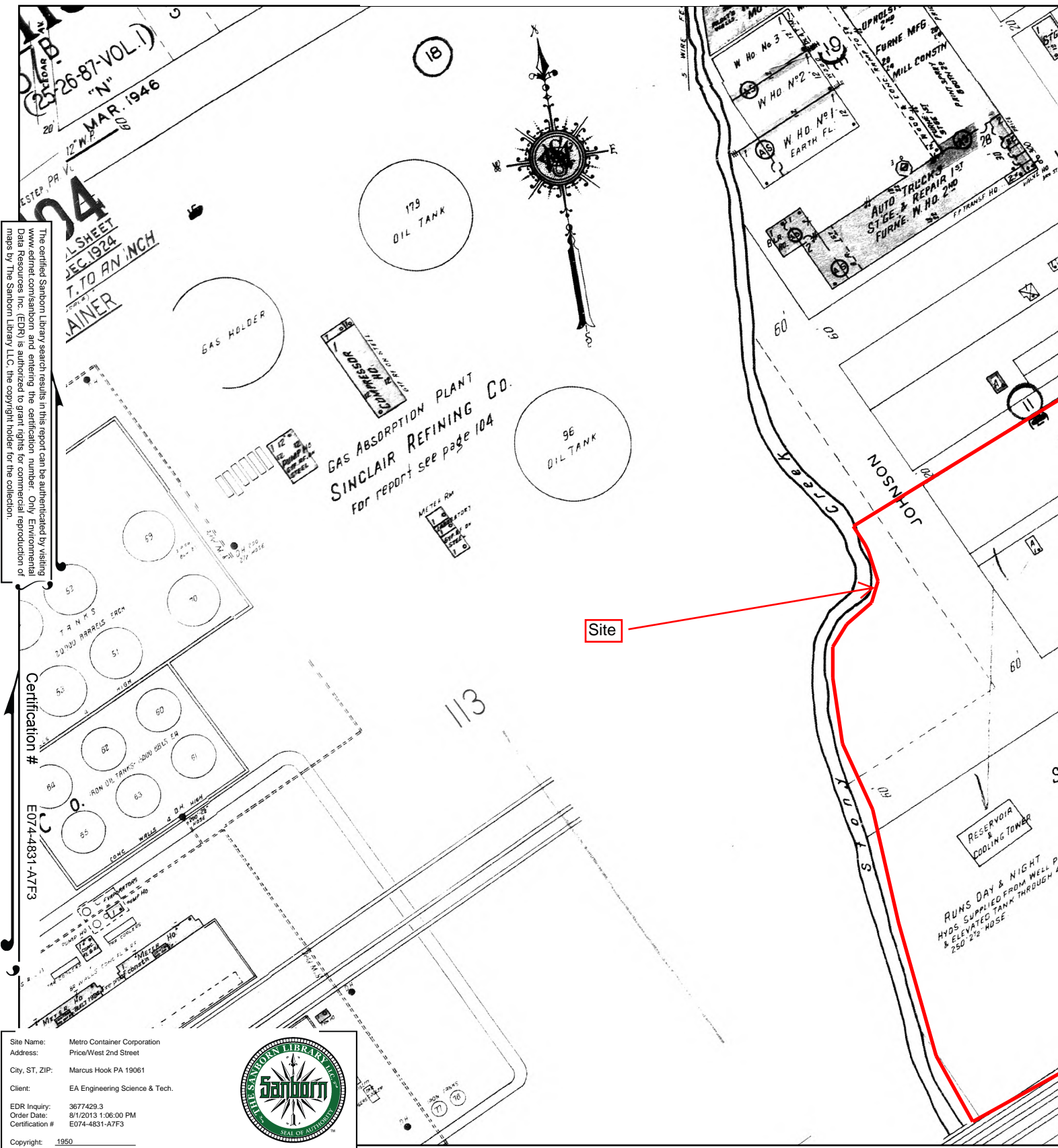
This Certified Sanborn Map combines the following sheets. Outlined areas indicate map sheets within the collection.



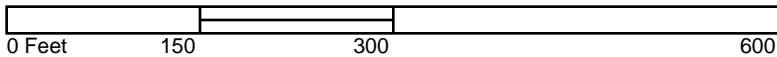
Volume 1, Sheet 25
 Volume 1, Sheet 26
 Volume 2, Sheet 113



1950 Certified Sanborn Map



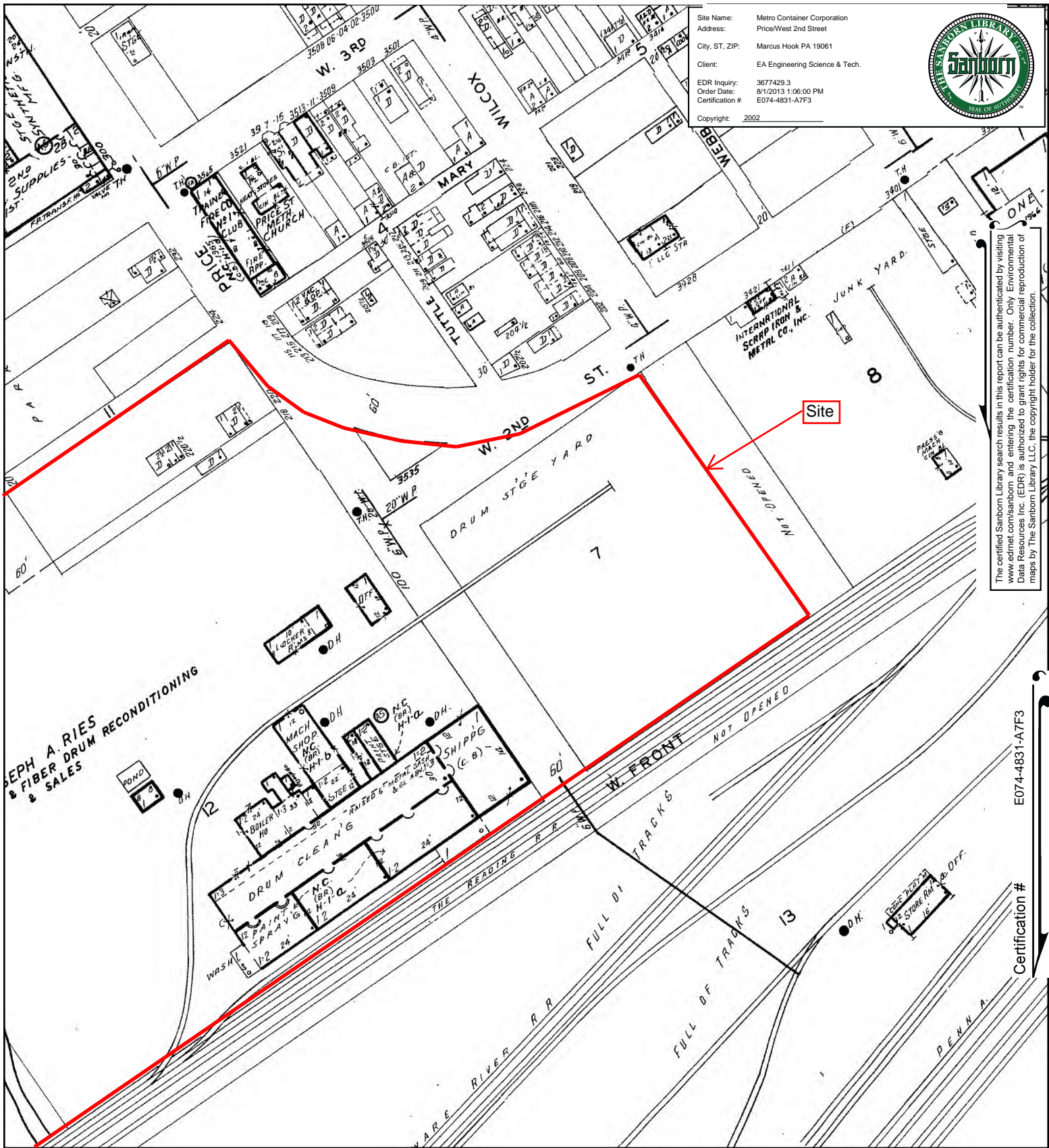
This Certified Sanborn Map combines the following sheets.
Outlined areas indicate map sheets within the collection.



Volume 1, Sheet 25
Volume 1, Sheet 87
Volume 2, Sheet 104
Volume 2, Sheet 113



2002 Certified Sanborn Map

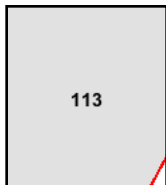
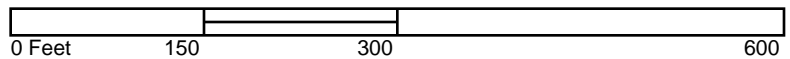


The certified Sanborn Library search results in this report can be authenticated by visiting www.ednet.com/sanborn and entering the certification number. Only Environmental Data Resources Inc. (EDR) is authorized to grant rights for commercial reproduction of maps by The Sanborn Library LLC, the copyright holder for the collection.

E074-4831-A7F3

Certification #

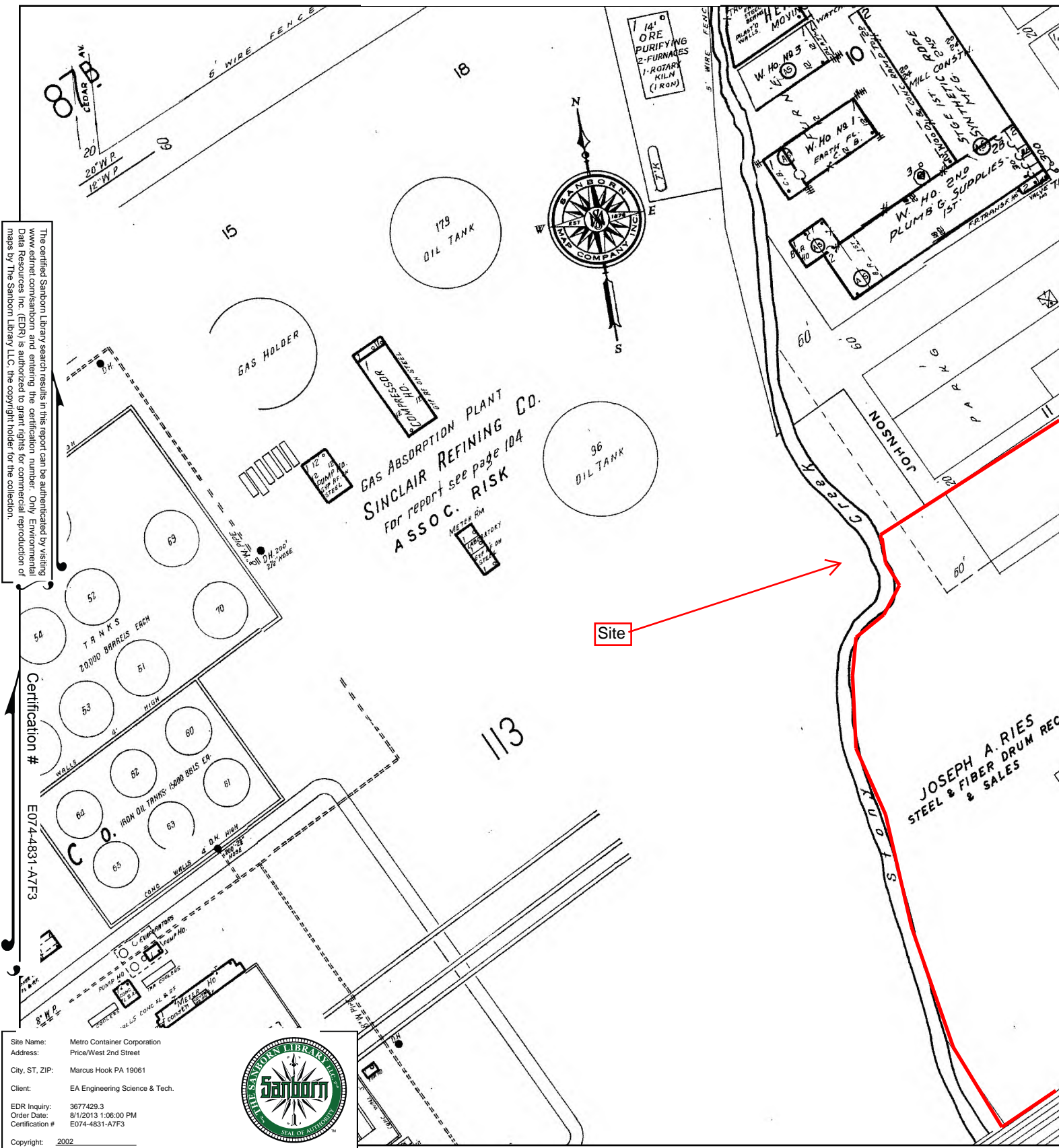
This Certified Sanborn Map combines the following sheets.
 Outlined areas indicate map sheets within the collection.



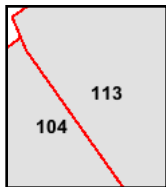
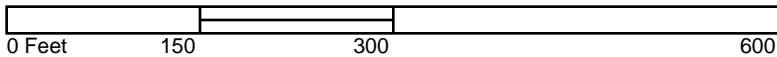
Volume 2, Sheet 113



2002 Certified Sanborn Map



This Certified Sanborn Map combines the following sheets. Outlined areas indicate map sheets within the collection.



Volume 2, Sheet 104
Volume 2, Sheet 113





1930 Aerial Photo of Site



Legend

 Site Boundary



NAD83 PA SP South
0 160
ft

1 in = 150 ft

Historic Imagery: www.historicaerials.com
Chester Pa, 1940

Metro Container, 200 Price Street
Trainer, PA

Figure x-x
Historic Imagery
1940

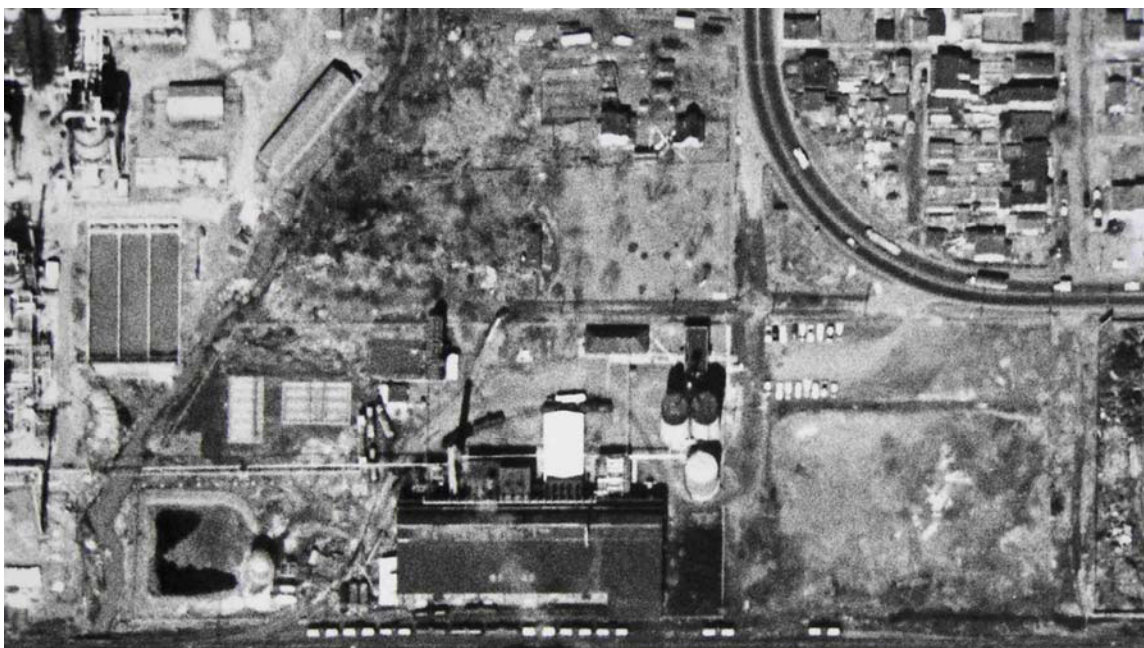
TDD#:EP-DT03-00001
WS01-13-06-001
Contract: EP-S3-10-05



**Trainer Industries, LLC/Former Metro Container Corporation Site
Trainer, Pennsylvania**

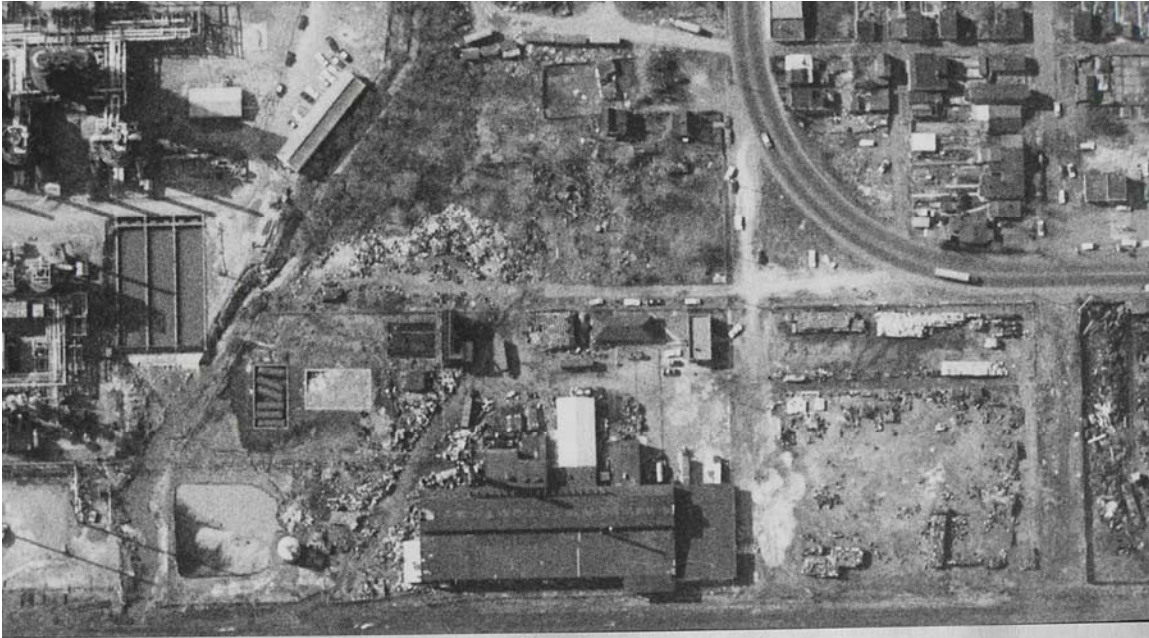


**Former Metro Container Site Aerial Photograph
March 11, 1953
(Stauffer Chemical Company, Inc. Ownership)**



**Former Metro Container Site Aerial Photograph
March 16, 1959
(Stauffer Chemical Company, Inc. Ownership)**

**Trainer Industries, LLC/Former Metro Container Corporation Site
Trainer, Pennsylvania**



**Former Metro Container Site Aerial Photograph
April 22, 1965
(Joseph A. Reis Company Ownership)**



**Former Metro Container Site Aerial Photograph
April 8, 1970
(Universal Container Corporation Ownership)**

**Trainer Industries, LLC/Former Metro Container Corporation Site
Trainer, Pennsylvania**



**Former Metro Container Site Aerial Photograph
March 9, 1975
(Universal Container Corporation Ownership)**

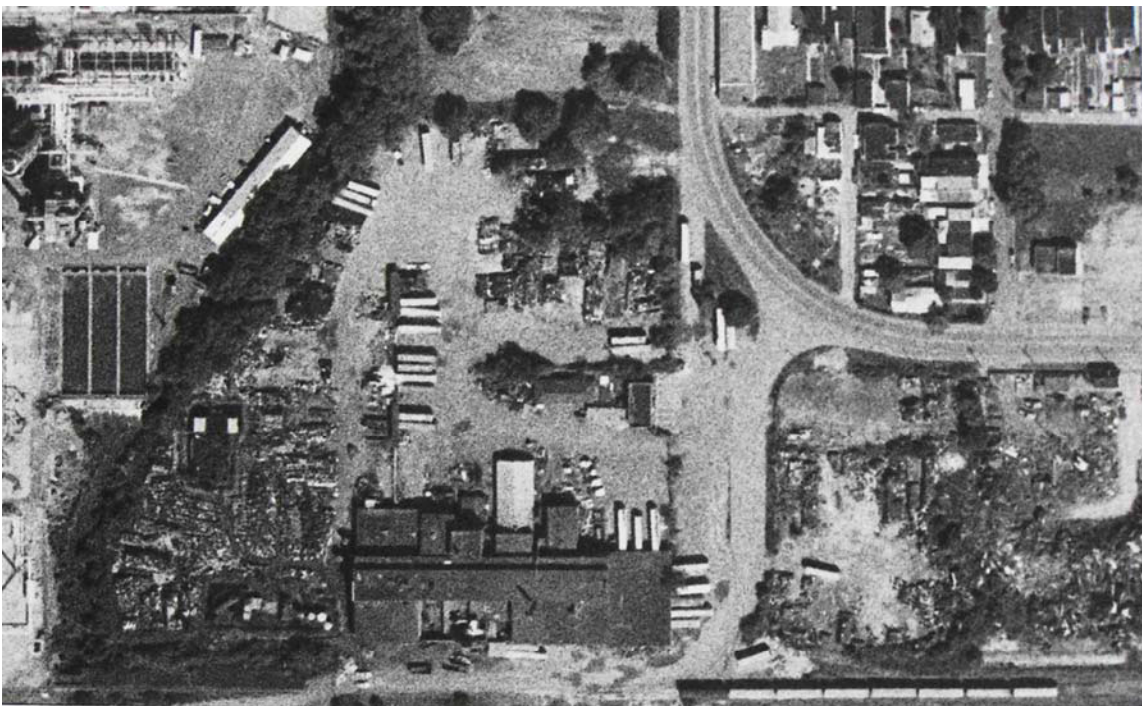


**Former Metro Container Site Aerial Photograph
October 30, 1979
(Universal Container Corporation Ownership)**

**Trainer Industries, LLC/Former Metro Container Corporation Site
Trainer, Pennsylvania**



**Former Metro Container Site Aerial Photograph
March 6, 1985**



**Former Metro Container Site Aerial Photograph
June 13, 1988**

**Trainer Industries, LLC/Former Metro Container Corporation Site
Trainer, Pennsylvania**



**Former Metro Container Site Aerial Photograph
November 4, 1989**



**Former Metro Container Site Aerial Photograph
April 19, 1990**

**Trainer Industries, LLC/Former Metro Container Corporation Site
Trainer, Pennsylvania**

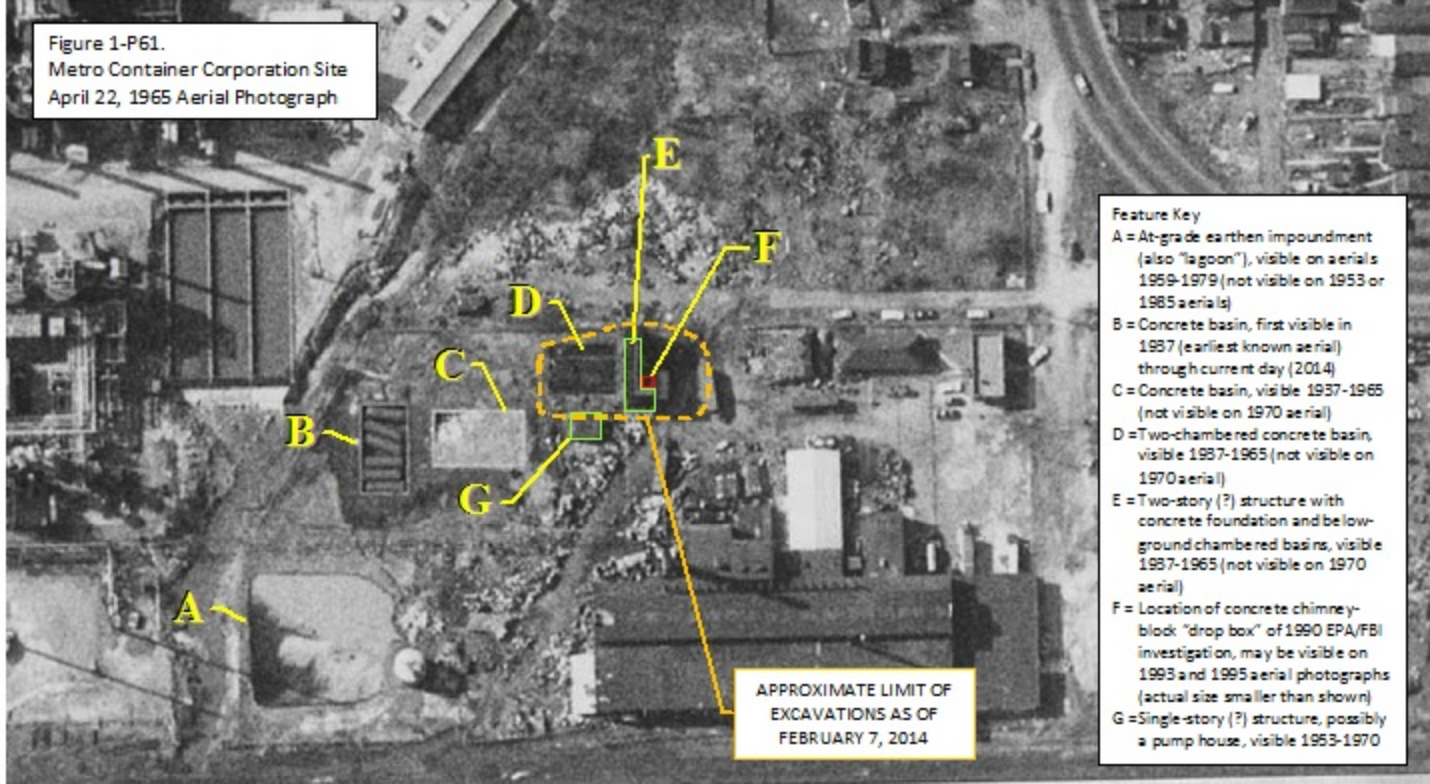


**Former Metro Container Site Aerial Photograph
April 19, 1993**



**Former Metro Container Site Aerial Photograph
March 24, 1995**

Figure 1-P61.
Metro Container Corporation Site
April 22, 1965 Aerial Photograph



Feature Key

- A = At-grade earthen impoundment (also "lagoon"), visible on aerials 1959-1979 (not visible on 1953 or 1985 aerials)
- B = Concrete basin, first visible in 1937 (earliest known aerial) through current day (2014)
- C = Concrete basin, visible 1937-1965 (not visible on 1970 aerial)
- D = Two-chambered concrete basin, visible 1937-1965 (not visible on 1970 aerial)
- E = Two-story (?) structure with concrete foundation and below-ground chambered basins, visible 1937-1965 (not visible on 1970 aerial)
- F = Location of concrete chimney-block "drop box" of 1990 EPA/FBI investigation, may be visible on 1993 and 1995 aerial photographs (actual size smaller than shown)
- G = Single-story (?) structure, possibly a pump house, visible 1953-1970