



**CONESTOGA-ROVERS  
& ASSOCIATES**

Prepared for:

**CN**

## INCIDENT ACTION PLAN COVER SHEET ICS 200

**Incident Name:**

CN - Minter City Train Derailment

**Incident Number:**

N/A

N/A

**Date Prepared:**

2-Apr-15

**Time Prepared:**

1700 hours

**Prepared by:**

Nathan L. Judice

CRA, Inc.

**Latitude:**

33.766896 N

**Longitude:**

90.239804 W

**Operational Start  
Date/Time:**

April 1, 2015 @ 1900 hours

**Operational Finish  
Date/Time:**

April 2, 2015 @ 1900 hours

### APPROVAL

FOSC

US EPA - Jason Booth

SOSC

MDEQ - Jason Suggs

EMA

Leflore County

RP

CN

### TABLE OF CONTENTS

X

Incident Briefing (ICS 201)

X

Response Objectives (ICS 202)

X

Organization Assignment List (203)

X

Assignment List (ICS 204)

X

Communication Plan (205)

X

Medical Plan (USES Site-Specific Health and Safety Plan )

X

Incident Organization Plan (ICS 207)

X

Safety Message (ICS 213)

X

Daily Safety and Health Message

**Operational Period:**

April 1, 2015 @ 1900 hours to April 2, 2015 @ 1900 hours



**CONESTOGA-ROVERS  
& ASSOCIATES**

Prepared for:

**CN**

## INCIDENT BRIEFING

### ICS 201 – 1A

## MAP / SKETCH



## Approximate Area of Derailement

Operational Period:

April 1, 2015 @ 1900 hours to April 2, 2015 @ 1900 hours



# INCIDENT BRIEFING

## ICS 201 – 1B

### MAP / SKETCH



### VOC Concentration Map

Operational Period:

April 1, 2015 @ 1900 hours to April 2, 2015 @ 1900 hours





**CONESTOGA-ROVERS  
& ASSOCIATES**

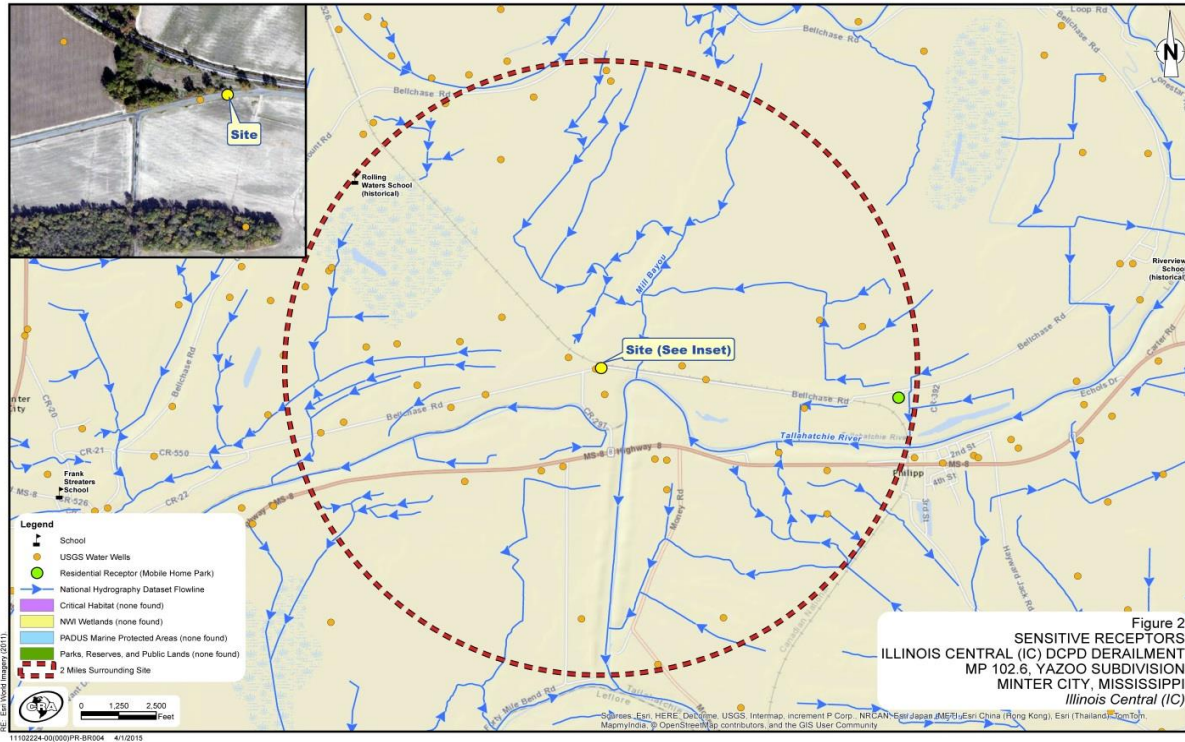
Prepared for:

**CN**

# INCIDENT BRIEFING

## ICS 201 – 1C

### MAP / SKETCH



### Sensitive Receptors Map

Operational Period:

April 1, 2015 @ 1900 hours to April 2, 2015 @ 1900 hours



**CONESTOGA-ROVERS  
& ASSOCIATES**

Prepared for:

**CN**

## RESPONSE PRIORITIES

### ICS 201 – 2A

#### Response Priorities

- 1.) Safety of Workers and the Community
- 2.) Protect the Environment
- 3.) Minimize Property Loss
- 4.) Restore Infrastructure
- 5.) Maintain Public Confidence

**Operational Period:**

**April 1, 2015 @ 1900 hours to April 2, 2015 @ 1900 hours**



**CONESTOGA-ROVERS  
& ASSOCIATES**

Prepared for:

**CN**

## RESPONSE OBJECTIVES

### ICS 201 – 2B

#### OBJECTIVES FOR OPERATIONAL PERIOD

- Worker and Community Safety
- Community and Work Zone Air Monitoring
- Visual Inspection of Impacted Areas
- Continue Containment and Recovery of Released Material
- Recovery of Released Product in Zones 1, 4, and 5 with absorbent material
- Stock pile of impacted soil/securing of stock pile
- Sample collection of soil confirmation samples
- Completion of Soil, Waste, and Debris Management Plan

**Operational Period:**

**April 1, 2015 @ 1900 hours to April 2, 2015 @ 1900 hours**



**CONESTOGA-ROVERS  
& ASSOCIATES**

Prepared for:

**CN**

## **INCIDENT BRIEFING ICS 201 – 2C**

### **PRESS RELEASE**

A southbound CN train derailed 10 cars just before 8 p.m. central in a rural area of Mississippi about 25 miles west of Grenada.

There are no injuries.

One of the cars was carrying a hazardous material – dicyclopentadiene, a flammable liquid.

That car has leaked some product onto the ground adjacent to the tracks.

CN environmental teams are on site working with local emergency response officials to contain and clean up the spilled product.

CN is participating in the unified command system with USEPA, MDEQ, and Leflore County.

No other hazardous materials were involved. The other involved cars were carrying lumber, plastic and finished automobiles.

CN activated its emergency response plan and has crews, including hazardous materials and environmental teams, on site to remove the rail cars, clean up the spill and repair the damaged track.

The cause of last night's incident remains under investigation.

**Operational Period:**

**April 1, 2015 @ 1900 hours to April 2, 2015 @ 1900 hours**



Prepared for:  
**CN**

## INCIDENT BRIEFING

### ICS 201 – 2D

#### SUMMARY OF CURRENT ACTIONS

##### April 1, 2015 through April 2, 2015 :

- All work has been completed without incident.
- Excavation operations continued throughout the night. Headspace screening and confirmation sampling are being collected for verification of excavation activities.
- Air monitoring community readings were below the action level.
- Wrecking crews removed vehicles from car hauler and staged them for damage assessment
- Bob Strong has taken over as Incident Commander for CN.
- The original estimates of recovered liquids was calculated incorrectly, corrected version of recovered liquids is listed below in the table.
- Recovery operations continued throughout the day, approximately 2,800 gallons of liquid was recovered at 2100 hours on April 1, 2015; an additional 1,000 gallons of liquid was recovered by 1700 hours on April 2, 2015. A total of approximately 19,470 gallons was recovered to date.
- Impacted soil near the derailment area was stockpiled and will continue into the night.
- Workers in Recovery Zone 1, 4, and 5 recovered 2 roll off container of debris and absorbents using absorbent material. A total of 2 full roll off containers of absorbent material was collected to date.
- Continued community and work zone air monitoring for public and worker safety. No Readings detected in community.

4/1/2015 5PM - 4/2/2015 4PM

Manually Collected Real-Time Air Monitoring Data Summary Work/Hot Zone					
Number of Readings	Analyte	Minimum	Maximum	Average	Units
150	VOC	0	180	5.14	ppm
122	LEL	0	0	0.00	ppm
122	O2	20.9	20.9	20.9	ppm
122	H2S	0	5	0.40	ppm
119	CO	0	9	0.64	ppm
0	Benzene	0	0	-	ppm

Recovered Liquids as of 4/1/14 @ 2100 hours			
Frac Tank Number	Product	Water	Total
FM.1029	5,872	4,543	10,415
FM.1156	4,117	3,938	8,055
OF006	0	0	0
N-12141	0	0	0
N48445	0	0	0
TOTAL:	9,989	8,481	18,470

\*All amounts are estimated in gallons

Recovered Liquids by Date			
Frac Tank Number	Product	Water	Total
3/31 and 4/1/2015 at 1200	6,959	4,125	11,084
4/1/2015 at 2100	3,030	4,356	7,386
4/215			1,000
TOTAL:	9,989	8,481	19,470

\*All amounts are estimated in gallons

Operational Period:

April 1, 2015 @ 1900 hours to April 2, 2015 @ 1900 hours





**CONESTOGA-ROVERS  
& ASSOCIATES**

Prepared for:

**CN**

## INCIDENT BRIEFING

### ICS 201 – 3

#### RESOURCES SUMMARY

RESOURCE	PROVIDER	ON-SCENE	ASSIGNMENT
Wrecking Equipment	B&P	Offsite 4/1/15	Train Wrecking
Wrecking Equipment	Hulcher	Offsite 4/1/15	Train Wrecking
Wrecking Equipment	RJ Coreman	Offsite 4/1/15	Train Wrecking
Recovery Equipment	USES	3/30/2015	Recovery
Air Monitoring Equipment	CRA	3/30/2015	Safety

#### PERSONNEL SUMMARY

COMPANY	ON-SCENE	ASSIGNMENT
(55) USES in wooded area (25) USES in excavation area	Daniel Barrett	Recovery/Transfers
(11) CRA, INC	Nathan L. Judice	Environmental Assessment (air, water, soil)
(2) CTEH	Glen Thompson	Community (Air)
(10) CN	Bob Strong	IC
(1) EPA	Jason Booth	FOSC
(1) MDEQ	Jason Suggs	SOSC
Operational Period:	April 1, 2015 @ 1900 hours to April 2, 2015 @ 1900 hours	



**CONESTOGA-ROVERS  
& ASSOCIATES**

Prepared for:

**CN**

## RESPONSE OBJECTIVES

### ICS 202 – 1A

#### OBJECTIVES FOR NEXT OPERATIONAL PERIOD

- Continued to recover released product (dicyclopentadiene)
- Night Excavation operations in the site drainage ditch will continue throughout the night.
- Removal in impacted vegetation and soil in the wooded area with a Mini-Excavator
- Stabilization of the railroad by installing pilings will start following excavation and backfilling of site drainage ditch.
- Continue excavation operations until complete, headspace screening and confirmation samples will be collected.
- Management of storm water (If Encountered)
- Visual inspection of impacted areas
- Personnel from USCG will be onsite for Safety and Operations oversight
- Development of a Site Characterization Plan

**Operational Period:**

**April 1, 2015 @ 1900 hours to April 2, 2015 @ 1900 hours**



**CONESTOGA-ROVERS  
& ASSOCIATES**

Prepared for:










**CN**

## RESPONSE OBJECTIVES

### ICS 202 – 2

#### WEATHER REPORT

From [www.Intellicast.com](http://www.Intellicast.com)

<b>Friday</b> 04/03 <b>79</b>   <b>46</b> °F		<b>Friday</b>  <b>80% Precip. / 0.19 in</b> Cloudy in the morning, then thunderstorms developing later in the day. A few storms may be severe. High 79F. Winds SW at 15 to 25 mph. Chance of rain 80%.
		<b>Friday Night</b>  <b>80% Precip. / 0.07 in</b> Light rain early. Partial clearing late. Low 46F. Winds N at 15 to 25 mph. Chance of rain 80%.
<b>Saturday</b> 04/04 <b>66</b>   <b>46</b> °F		<b>Saturday</b>  <b>0% Precip. / 0 in</b> Mainly sunny. High 66F. Winds NNE at 10 to 20 mph.
		<b>Saturday Night</b>  <b>0% Precip. / 0 in</b> A few clouds overnight. Low 46F. Winds ENE at 5 to 10 mph.
<b>Sunday</b> 04/05 <b>62</b>   <b>55</b> °F		<b>Sunday</b>  <b>90% Precip. / 0.16 in</b> Cloudy skies with periods of rain later in the day. High 62F. Winds SE at 5 to 10 mph. Chance of rain 90%.

**Operational Period:**

**April 1, 2015 @ 1900 hours to April 2, 2015 @ 1900 hours**



**CONESTOGA-ROVERS  
& ASSOCIATES**

Prepared for:

**CN**

## Communications Plan ICS 205

<b>ICS Position:</b>	<b>Company:</b>	<b>Name:</b>	<b>Cell:</b> 601-592-1838
Incident Commander	CN	Bob Strong	<b>Radio:</b>
			<b>E-mail:</b> bob.strong@cn.ca
<b>ICS Position:</b>	<b>Company:</b>	<b>Name:</b>	<b>Cell:</b> 901-485-9799
Operation Section Chief	USES	Daniel Barrett	<b>Radio:</b>
			<b>E-mail:</b> dbarrett@usesgroup.com
<b>ICS Position:</b>	<b>Company:</b>	<b>Name:</b>	<b>Cell:</b> 225-975-7993
Safety Officer	CRA	David Wilikinson	<b>Radio:</b>
			<b>E-mail:</b> dwilkinson@craworld.com
<b>ICS Position:</b>	<b>Company:</b>	<b>Name:</b>	<b>Cell:</b> 337-335-8035
Planning Officer	CRA	Nathan Judice	<b>Radio:</b>
			<b>E-mail:</b> njudice@craworld.com
<b>ICS Position:</b>	<b>Company:</b>	<b>Name:</b>	<b>Cell:</b> 708-990-5771
Information Officer	CN	Patrick Waldron	<b>Radio:</b>
			<b>E-mail:</b> patrick.waldron@cn.ca
<b>ICS Position:</b>	<b>Company:</b>	<b>Name:</b>	<b>Cell:</b> 901-485-9799
Logistics Officer	USES	Daniel Barrett	<b>Radio:</b>
			<b>E-mail:</b> dbarrett@usesgroup.com
<b>ICS Position:</b>	<b>Company:</b>	<b>Name:</b>	<b>Cell:</b>
Finance Officer	CN	Anthony Dale	<b>Radio:</b>
			<b>E-mail:</b>
<b>ICS Position:</b>	<b>Company:</b>	<b>Name:</b>	<b>Cell:</b> 662-897-6901
EMA		Fred Randle	<b>Radio:</b>
			<b>E-mail:</b> glema1@cgdsl.net
<b>ICS Position:</b>	<b>Company:</b>	<b>Name:</b>	<b>Cell:</b> 662-897-6114
Security	SO	Matthew Brown	<b>Radio:</b>
			<b>E-mail:</b>
<b>ICS Position:</b>	<b>Company:</b>	<b>Name:</b>	<b>Cell:</b>
Fire		Michael Walker	<b>Radio:</b>
			<b>E-mail:</b> iam42so25@outlook.com
<b>ICS Position:</b>	<b>Company:</b>	<b>Name:</b>	<b>Cell:</b> 404-216-5517
Federal On Scene	USEPA	Jason A. Booth	<b>Radio:</b>
			<b>E-mail:</b> booth.jason@epa.gov
<b>ICS Position:</b>	<b>Company:</b>	<b>Name:</b>	<b>Cell:</b> 901-491-1225
State On Scene	MDEQ	Jason Suggs	<b>Radio:</b>
			<b>E-mail:</b> jason_suggs@deq.state.ms.us
<b>Operational Period:</b>		<b>April 1, 2015 @ 1900 hours to April 2, 2015 @ 1900 hours</b>	



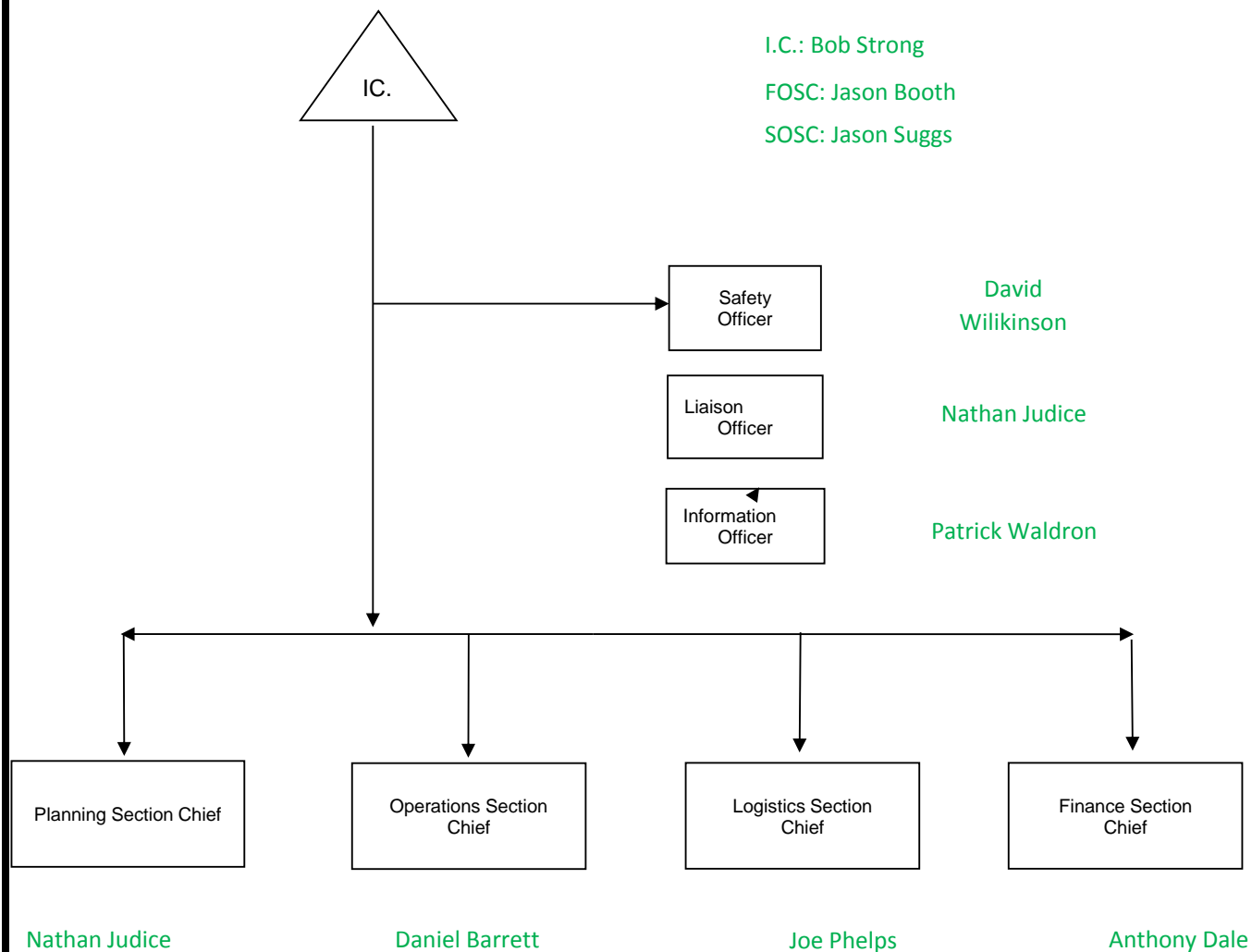
**CONESTOGA-ROVERS  
& ASSOCIATES**

Prepared for:

**CN**

## Incident Organization Chart ICS 207

### CURRENT ORGANIZATION



Operational Period:

April 1, 2015 @ 1900 hours to April 2, 2015 @ 1900 hours





**CONESTOGA-ROVERS  
& ASSOCIATES**

Prepared for:

**CN**

## **SITE SAFETY MESSAGE ICS 213**

- PPE: FRC, safety boots, safety glasses, hard hat, hearing protection, safety vests, APRs when action levels are exceeded
- Watch footing, tie-off ladders, 3-Point Contact
- Watch out for slips, trips and falls
- Use proper lifting techniques, get help or use lifting equipment
- Keep Hydrated
- Follow adequate work/rest schedule
- Use intrinsically safe equipment in flammable/hazardous environments
- Alert response personnel of air monitoring readings above action levels for LEL and/or VOCs and don appropriate PPE
- Severe weather potential

**Operational Period:**

**April 1, 2015 @ 1900 hours to April 2, 2015 @ 1900 hours**