



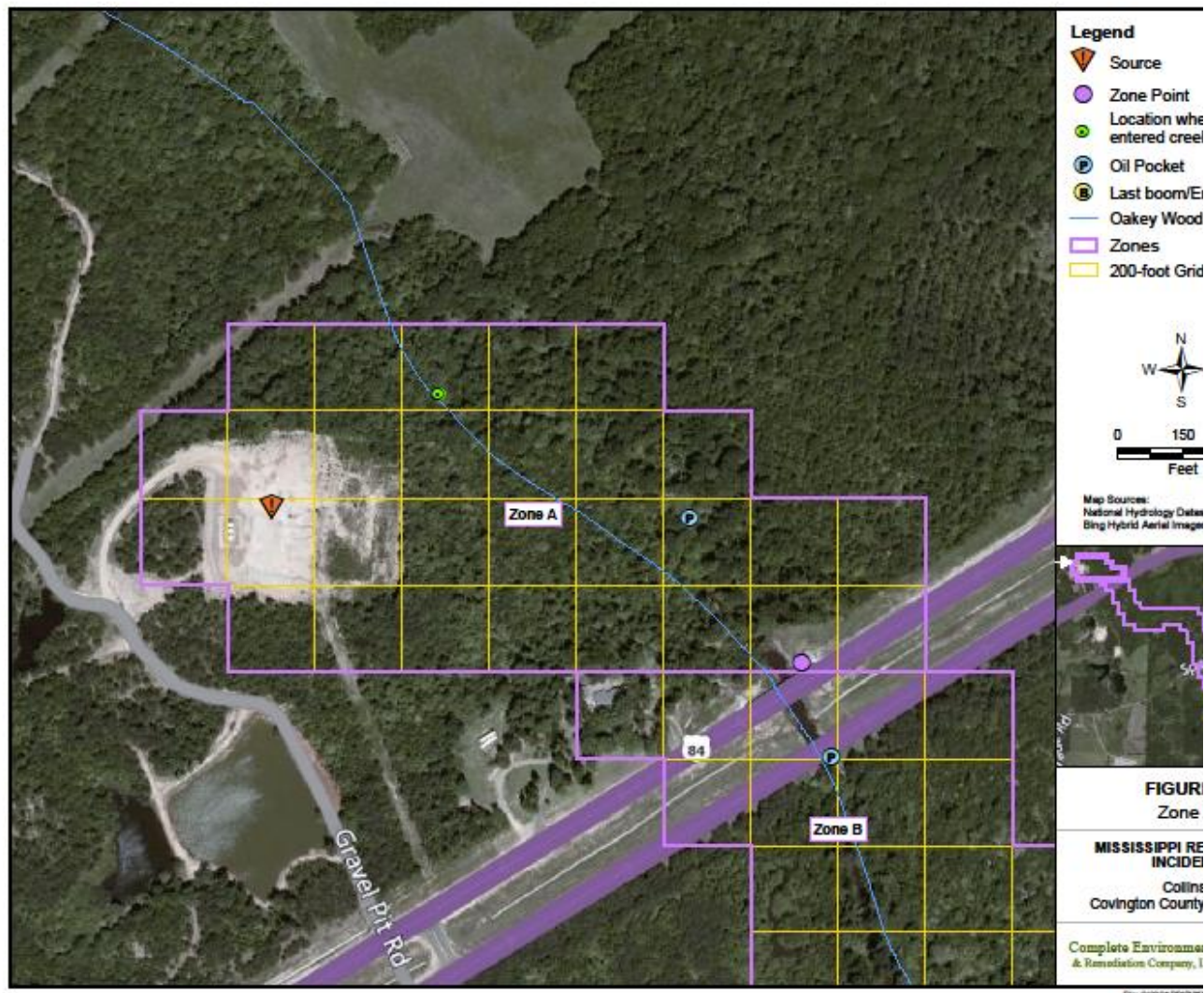
INLAND SHORELINE AND WETLAND ASSESSMENT FORM - MDEQ SCAT

1. GENERAL INFORMATION		Date (dd/mm/yy)	Time (24h standard/daylight)	Winds:
Segment ID:	Zone A	17-Apr-15		24hr Precip
Survey By: Foot/ Boat			Weather: Partly Cloudy	
2. SURVEY TEAM		Name	Organization	Phone Num
Signature:		Mac Hudson	Complete Env	
3. SEGMENT		Total Length: approx 500	Length Surveyed: approx 500 yards	Differential
Start GPS:		N 31 deg 41.110	W 089 deg 28.086	
End GPS:		N 31 deg 41.056	W 089 deg 27.850	
4. SHORELINE HABITAT TYPE		Select only ONE Primary (P) and ANY Secondary (S) types present		
P	Sheet flow to creek			
P	Oakey Wood Creek			
5. WETLAND CHARACTER		Physical Setting: low lying area and creek		
Wetland Type:				
6. VEGETATIVE COVER		Describe prevailing vegetative cover or unique cover to this segment		
volunteer hedges, some small pine				
7. OPERATIONAL FEATURES		Oiled Debris: Yes (mild) Type:	Oiled Vegetation: Yes (
Access via boat only: NO				
Can substrate support foot traffic: YES				
Access Restrictions: NONE				
8. OIL CONDITIONS		Describe in Comments Section below. Include wildlife observ		
Recoverable and subsurface oil. No wildlife observed				
Gopher Tortoise (sandy areas)				
Quill Wort				
9. CLEANUP RECOMMENDATIONS		Ecological/ Recreational/ Cultural Issues/ Wildlife Considerat		
manual recovery in small pockets in creek				
soil excavation between well head and creek approx .25 acre impacted. Remove bulk contamination				
10. PHOTO LOG		Reference photos where applicable in Sections 8 & 9		
Number	GPS		Description	
1	N	W	Well Head	
2	N	W	Aerial of contamination plume	
3	N	W	Zone A Collection Point	



INLAND SHORELINE AND WETLAND ASSESSMENT FORM - MDEQ SCAT

10. PHOTO LOG (CONT)		Reference photos where applicable in Sections 8 & 9
Number	GPS	Description
4	N W	Hwy 84 Aerial
	N W	
	N W	
	N W	
	N W	
	N W	
	N W	
	N W	
	N W	
	N W	
	N W	
	N W	
	N W	
	N W	
	N W	
	N W	
11. SEGMENT SKETCH (IF APPLICABLE)		





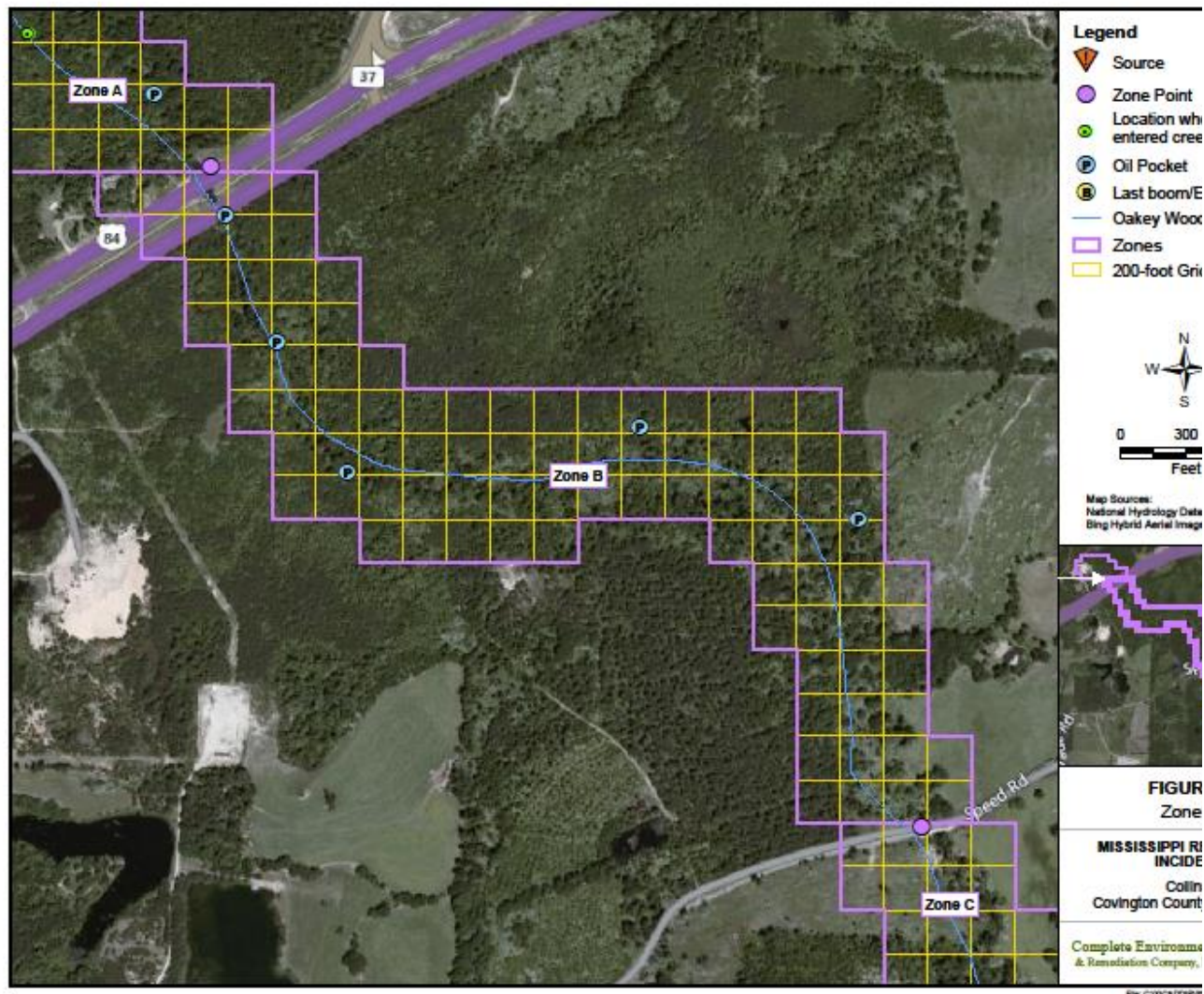
INLAND SHORELINE AND WETLAND ASSESSMENT FORM - MDEQ SCAT

1. GENERAL INFORMATION		Date (dd/mm/yy)	Time (24h standard/daylight)	Winds:
Segment ID:	Zone B	17-Apr-15		24hr Precip
Survey By: Boat / Foot			Weather: Partly Cloudy Rainy	
2. SURVEY TEAM		Name	Organization	Phone Num
Signature:		Ryan Bridgers	E3	
		Wesley Byrd	E3	
3. SEGMENT		Total Length: approx 1 m	Length Surveyed: approx 1 mi	Differential
Start GPS:		N 31 deg 41.056	W 089 deg 27.850	
End GPS:		N 31 deg 40.567	W 089 deg 27.209	
4. SHORELINE HABITAT TYPE		Select only ONE Primary (P) and ANY Secondary (S) types present		
P	Oakey Wood Creek			
5. WETLAND CHARACTER		Physical Setting: creek		
Wetland Type:				
6. VEGETATIVE COVER		Describe prevailing vegetative cover or unique cover to this segment		
7. OPERATIONAL FEATURES		Oiled Debris: Yes	Type: log jams	Oiled Vegetation: Yes
Access via boat only: yes				
Can substrate support foot traffic: yes				
Access Restrictions: NONE				
8. OIL CONDITIONS		Describe in Comments Section below. Include wildlife observ		
Recoverable free oil. No wildlife observed				
Rain carried bulk of oil to collection points				
Some oil remains trapped in debris / log jams				
no wildlife observed				
9. CLEANUP RECOMMENDATIONS		Ecological/ Recreational/ Cultural Issues/ Wildlife Considerat		
mechanical recovery at Speed Bridge collection point				
manual recovery in small pockets in creek				
10. PHOTO LOG		Reference photos where applicable in Sections 8 & 9		
Number	GPS		Description	
1	N	W	Aerial of Speed Road Collection	
2	N	W	Aerial of sheen moving to collection	
3	N	W		



INLAND SHORELINE AND WETLAND ASSESSMENT FORM - MDEQ SCAT

10. PHOTO LOG (CONT)		Reference photos where applicable in Sections 8 & 9
Number	GPS	Description
4	N W	
5	N W	
6	N W	
7	N W	
8	N W	
	N W	
	N W	
	N W	
	N W	
	N W	
	N W	
	N W	
	N W	
	N W	
11. SEGMENT SKETCH (IF APPLICABLE)		





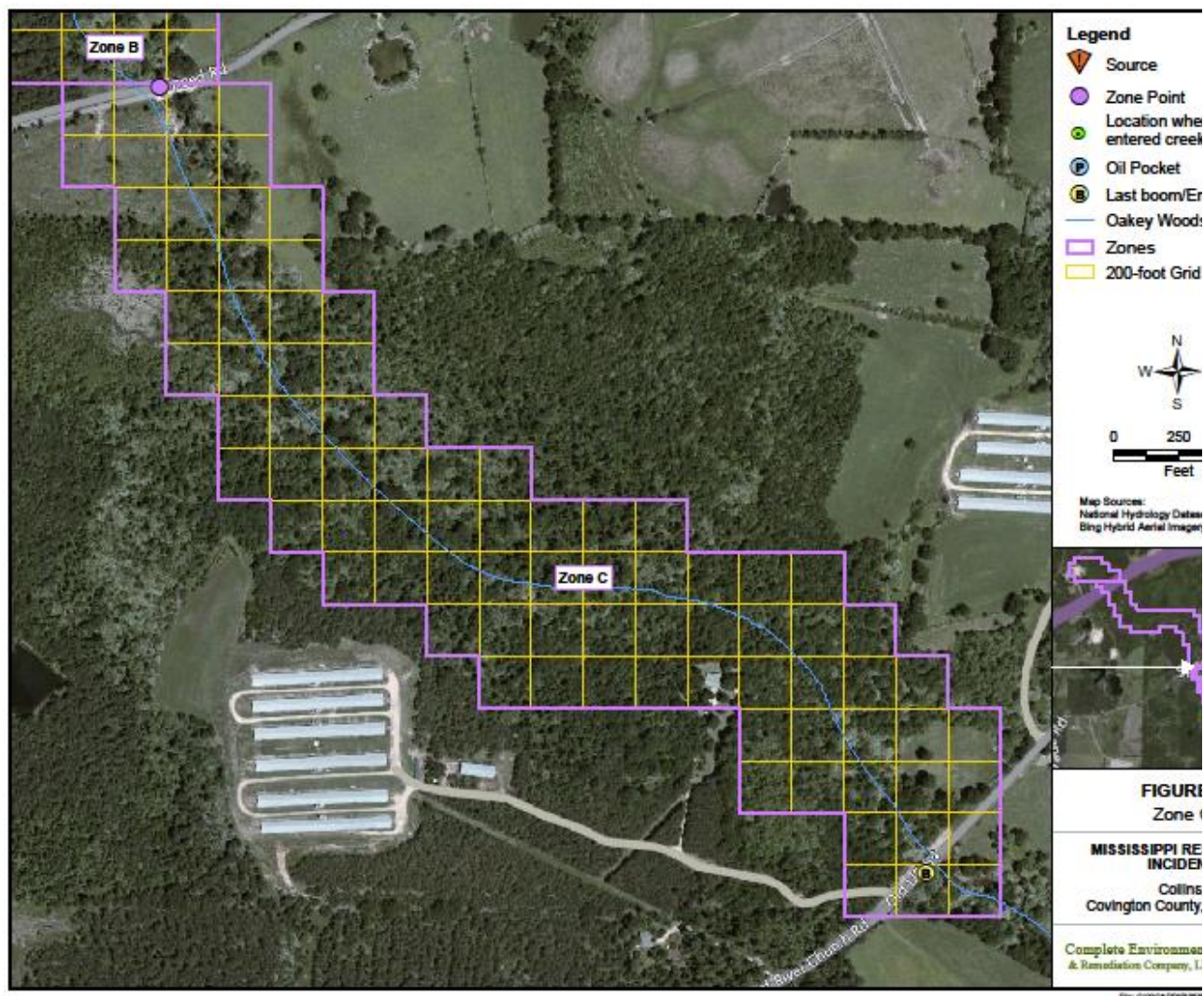
INLAND SHORELINE AND WETLAND ASSESSMENT FORM - MDEQ SCAT

1. GENERAL INFORMATION		Date (dd/mm/yy)	Time (24h standard/daylight)	Winds:
Segment ID:	Zone C	17-Apr-15		24hr Precip
Survey By: Boat / Foot			Weather: Partly Cloudy Rainy	
2. SURVEY TEAM		Name	Organization	Phone Num
Signature:		Ryan Bridgers	E3	
		Wesley Byrd	E3	
3. SEGMENT		Total Length: approx 1 m	Length Surveyed: approx 1 mi	Differential
Start GPS:				
End GPS:				
4. SHORELINE HABITAT TYPE		Select only ONE Primary (P) and ANY Secondary (S) types present		
P	Oakey Wood Creek			
5. WETLAND CHARACTER		Physical Setting: creek		
Wetland Type:				
6. VEGETATIVE COVER		Describe prevailing vegetative cover or unique cover to this segment		
7. OPERATIONAL FEATURES		Oiled Debris: Yes	Type: log jams	Oiled Vegetation: Yes
Access via boat only: NO				
Can substrate support foot traffic: yes				
Access Restrictions: NONE				
8. OIL CONDITIONS		Describe in Comments Section below. Include wildlife observ		
Minimal Recoverable free oil. No wildlife observed				
Some oil remains trapped in debris / log jams				
no wildlife observed				
9. CLEANUP RECOMMENDATIONS		Ecological/ Recreational/ Cultural Issues/ Wildlife Considerat		
manual recovery of emulsified oil in hot spots in creek				
manual recovery at bridge				
10. PHOTO LOG		Reference photos where applicable in Sections 8 & 9		
Number	GPS	Description		
1	N W	Zone C Creek		
2	N W	Zone C Creek		
3	N W	Zone C Containment boom at Leaf River Ch Rd		



INLAND SHORELINE AND WETLAND ASSESSMENT FORM - MDEQ SCAT

10. PHOTO LOG (CONT)		Reference photos where applicable in Sections 8 & 9
Number	GPS	Description
4	N W	ZONE C Creek
5	N W	
6	N W	
7	N W	
8	N W	
	N W	
	N W	
	N W	
	N W	
	N W	
	N W	
	N W	
	N W	
11. SEGMENT SKETCH (IF APPLICABLE)		





ZONE A SOURCE



ZONE A CONTAMINATION PLU



ZONE A COLLECTION



ZONE A AERIAL HWY 84





ZONE B Speed bridge collection



ZONE B Aerial Sheen moving to co



ZONE B CREEK



ZONE B CREEK

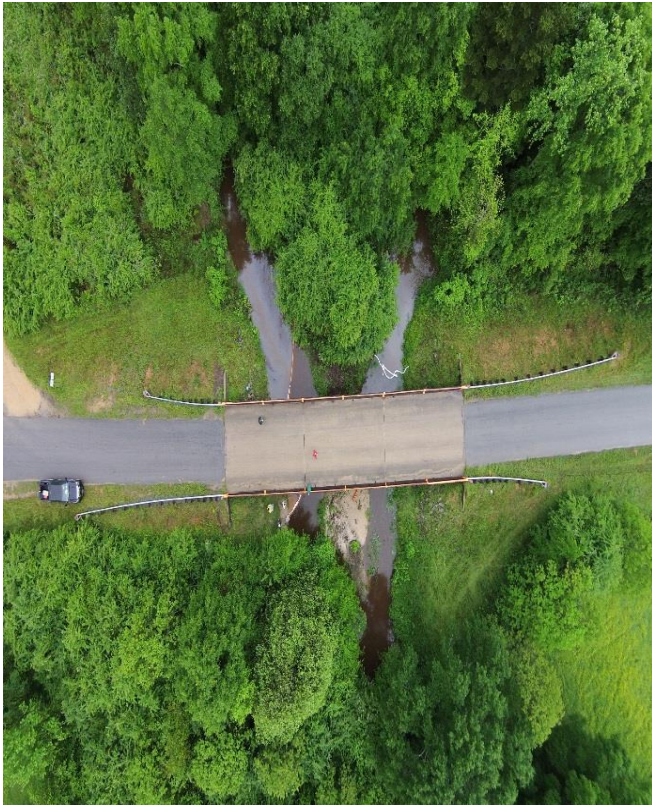




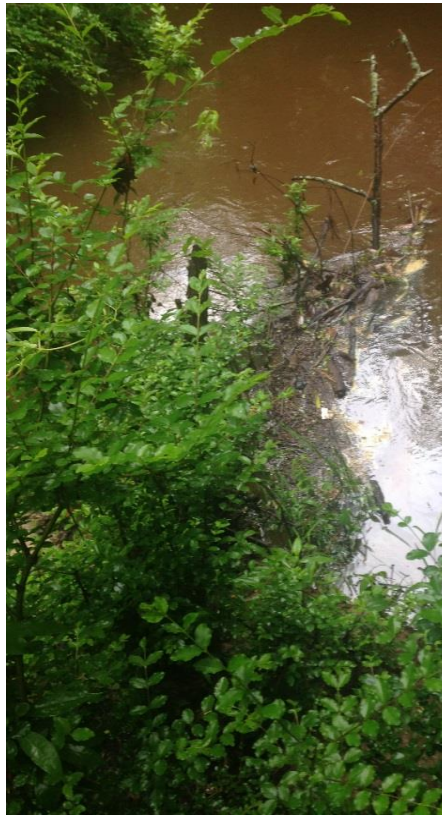
ZONE C CREEK



ZONE C CREEK



ZONE C BOOM AT LEAF RIVER CH RD



ZONE C CREEK

[illegible]

[illegible]



ME





llection



