



**CONESTOGA-ROVERS
& ASSOCIATES**

Prepared for:

CN

INCIDENT ACTION PLAN COVER SHEET ICS 200

Incident Name:

CN - Minter City Train Derailment

Incident Number:

N/A

N/A

Date Prepared:

3-Apr-15

Time Prepared:

1700 hours

Prepared by:

Nathan L. Judice

CRA, Inc.

Latitude:

33.766896 N

Longitude:

90.239804 W

**Operational Start
Date/Time:**

April 2, 2015 @ 1900 hours

**Operational Finish
Date/Time:**

April 3, 2015 @ 1900 hours

APPROVAL

FOSC

US EPA - Jason Booth

SOSC

MDEQ - Jason Suggs

EMA

Leflore County

RP

CN

TABLE OF CONTENTS

X

Incident Briefing (ICS 201)

X

Response Objectives (ICS 202)

X

Organization Assignment List (203)

X

Assignment List (ICS 204)

X

Communication Plan (205)

X

Medical Plan (USES Site-Specific Health and Safety Plan)

X

Incident Organization Plan (ICS 207)

X

Safety Message (ICS 213)

X

Daily Safety and Health Message

Operational Period:

April 2, 2015 @ 1900 hours to April 3, 2015 @ 1900 hours



**CONESTOGA-ROVERS
& ASSOCIATES**

Prepared for:

CN

INCIDENT BRIEFING

ICS 201 – 1A

MAP / SKETCH



Approximate Area of Derailement

Operational Period:

April 2, 2015 @ 1900 hours to April 3, 2015 @ 1900 hours



**CONESTOGA-ROVERS
& ASSOCIATES**

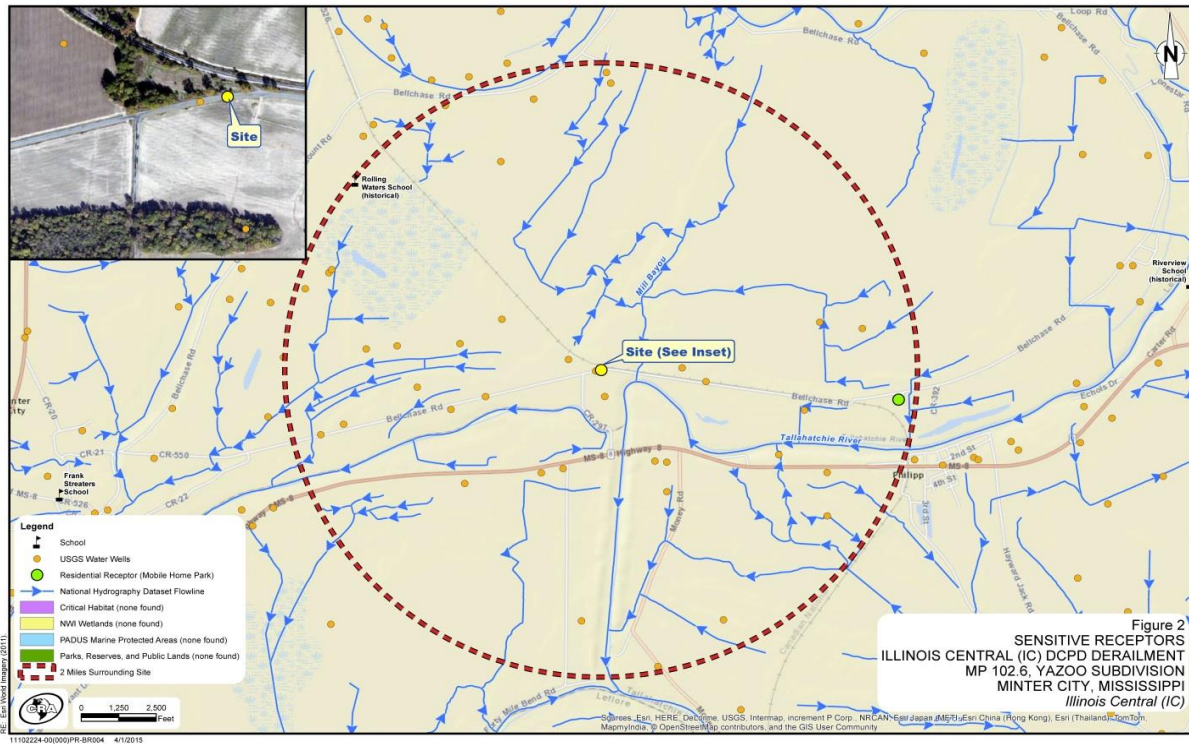
Prepared for:

CN

INCIDENT BRIEFING

ICS 201 – 1C

MAP / SKETCH



Sensitive Receptors Map

Operational Period:

April 2, 2015 @ 1900 hours to April 3, 2015 @ 1900 hours



**CONESTOGA-ROVERS
& ASSOCIATES**

Prepared for:

CN

RESPONSE PRIORITIES

ICS 201 – 2A

Response Priorities

- 1.) Safety of Workers and the Community
- 2.) Protect the Environment
- 3.) Minimize Property Loss
- 4.) Restore Infrastructure
- 5.) Maintain Public Confidence

Operational Period:

April 2, 2015 @ 1900 hours to April 3, 2015 @ 1900 hours



**CONESTOGA-ROVERS
& ASSOCIATES**

Prepared for:

CN

RESPONSE OBJECTIVES

ICS 201 – 2B

OBJECTIVES FOR OPERATIONAL PERIOD

- Worker and Community Safety
- Perimeter and Work Zone Air Monitoring
- Visual inspection of berms, excavation areas, and wooded area. Checking for berm breaches and visual product.
- Work crews will recover released product with absorbent material
- Secure all stock piles with poly to prevent contact with stormwater
- Rail crews will be installing pilings to stabilize the railroad.

Operational Period:

April 2, 2015 @ 1900 hours to April 3, 2015 @ 1900 hours

<div style="display: flex; align-items: center;"> <div> CONESTOGA-ROVERS & ASSOCIATES Prepared for: <div style="color: green; font-weight: bold;">CN</div> </div> </div>	<h2 style="margin: 0;">INCIDENT BRIEFING</h2> <h3 style="margin: 0;">ICS 201 – 2D</h3>				
SUMMARY OF CURRENT ACTIONS					
<p style="text-align: center; margin: 0;"><u>April 3, 2015 through April 4, 2015 :</u></p> <ul style="list-style-type: none"> An L&T contractor had a potential seizure while operating a dozer. Personnel on Site reacted quickly and EMS brought him to the hospital for evaluation, and he was later released. Board mat road built on Site to access Stormwater collection points. Excavation operations continued throughout the night (4-2-15). Headspace screening determined the depth of excavation and confirmation samples were also collected. Completion of 80-85% of the excavation and stock piling. Minimal visual product was observed and absorbent material was used to recover the product. A board mat road was built on site to ensure access to the site, in the event of rainfall. Continued community and work zone air monitoring for public and worker safety. No Readings detected in community. All soil stock piles were covered with poly to prevent runoff and cross contamination. Operations stopped at 1800 hours due to heavy storm event. 					
<div style="border: 1px solid black; padding: 2px; margin: 0 auto; width: 80%;"> 4/2/2015 4PM - 4/3/2015 4PM </div>					
Manually Collected Real-Time Air Monitoring Data Summary Work/Hot Zone					
Number of Readings	Analyte	Minimum	Maximum	Average	Units
122	VOC	0	8	0.60	ppm
75	LEL	0	0	0.00	%
75	O2	20.9	20.9	20.9	%
75	H2S	0	0	0.00	ppm
75	CO	0	5	0.13	ppm
0	Benzene	0	0	-	ppm
Recovered Liquids by Date					
Date	Product	Water	Total		
3/31 and 4/1/2015 at 1200	6,959	4,125	11,084		
4/1/2015 at 2100	3,030	4,356	7,386		
4/2/2015	200	800	1,000		
TOTAL:	10,189	9,281	19,470		
<i>*All amounts are estimated in gallons</i>					
Operational Period:	April 2, 2015 @ 1900 hours to April 3, 2015 @ 1900 hours				



**CONESTOGA-ROVERS
& ASSOCIATES**

Prepared for:

CN

INCIDENT BRIEFING

ICS 201 – 3

RESOURCES SUMMARY

RESOURCE	PROVIDER	ON-SCENE	ASSIGNMENT
Wrecking Equipment	B&P	Offsite 4/1/15	Train Wrecking
Wrecking Equipment	Hulcher	Offsite 4/1/15	Train Wrecking
Wrecking Equipment	RJ Corman	Offsite 4/1/15	Train Wrecking
Recovery Equipment	USES	3/30/2015	Recovery
Air Monitoring Equipment	CRA	3/30/2015	Safety

PERSONNEL SUMMARY

COMPANY	ON-SCENE	ASSIGNMENT
(25) USES	Daniel Barrett	Recovery/Transfers
(11) CRA, INC	Nathan L. Judice	Environmental Assessment (air, water, soil)
(2) CTEH	Glen Thompson	Operations
(1) CN	Bob Strong	IC
(Offsite) EPA	Jason Booth	FOSC
(1) MDEQ	Jason Suggs	SOSC
Operational Period:	April 2, 2015 @ 1900 hours to April 3, 2015 @ 1900 hours	



**CONESTOGA-ROVERS
& ASSOCIATES**

Prepared for:

CN

RESPONSE OBJECTIVES

ICS 202 – 1A

OBJECTIVES FOR NEXT OPERATIONAL PERIOD

- Visually inspection of berms, excavation areas, and wooded area.
- Recover product from stormwater runoff with absorbents.
- Develop plan to deal with stormwater (i.e.. Frac tanks, vacuum trucks, sample collection, etc.)
- Management of the stormwater one plan is developed (i.e.. Segregation of stormwater)

Operational Period:

April 2, 2015 @ 1900 hours to April 3, 2015 @ 1900 hours



**CONESTOGA-ROVERS
& ASSOCIATES**

Prepared for:

CN

RESPONSE OBJECTIVES

ICS 202 – 2

WEATHER REPORT

From www.Intellicast.com

Friday
04/03
79 | 46 °F



Friday

80% Precip. / 0.19 in

Cloudy in the morning, then thunderstorms developing later in the day. A few storms may be severe. High 79F. Winds SW at 15 to 25 mph. Chance of rain 80%.



Friday Night

80% Precip. / 0.07 in

Light rain early. Partial clearing late. Low 46F. Winds N at 15 to 25 mph. Chance of rain 80%.

Saturday
04/04
66 | 46 °F



Saturday

0% Precip. / 0 in

Mainly sunny. High 66F. Winds NNE at 10 to 20 mph.



Saturday Night

0% Precip. / 0 in

A few clouds overnight. Low 46F. Winds ENE at 5 to 10 mph.

Sunday
04/05
62 | 55 °F



Sunday

90% Precip. / 0.16 in

Cloudy skies with periods of rain later in the day. High 62F. Winds SE at 5 to 10 mph. Chance of rain 90%.

Operational Period:

April 2, 2015 @ 1900 hours to April 3, 2015 @ 1900 hours



**CONESTOGA-ROVERS
& ASSOCIATES**

Prepared for:

CN

Communications Plan ICS 205

ICS Position:	Company:	Name:	Cell: 601-592-1838
Incident Commander	CN	Bob Strong	Radio:
			E-mail: bob.strong@cn.ca
ICS Position:	Company:	Name:	Cell: 901-485-9799
Operation Section Chief	USES	Daniel Barrett	Radio:
			E-mail: dbarrett@usesgroup.com
ICS Position:	Company:	Name:	Cell: 225-975-7993
Safety Officer	CRA	David Wilkinson	Radio:
			E-mail: dwilkinson@croworld.com
ICS Position:	Company:	Name:	Cell: 337-335-8035
Planning/Liaison Officer	CRA	Nathan Judice	Radio:
			E-mail: njudice@croworld.com
ICS Position:	Company:	Name:	Cell: 708-990-5771
Information Officer	CN	Patrick Waldron	Radio:
			E-mail: patrick.waldron@cn.ca
ICS Position:	Company:	Name:	Cell: 901-485-9799
Logistics Officer	USES	Daniel Barrett	Radio:
			E-mail: dbarrett@usesgroup.com
ICS Position:	Company:	Name:	Cell:
Finance Officer	CN	Anthony Dale	Radio:
			E-mail:
ICS Position:	Company:	Name:	Cell: 404-216-5517
Federal On Scene	USEPA	Jason A. Booth	Radio:
			E-mail: booth.jason@epa.gov
ICS Position:	Company:	Name:	Cell: 901-491-1225
State On Scene	MDEQ	Jason Suggs	Radio:
			E-mail: jason_suggs@deq.state.ms.us
Operational Period:		April 2, 2015 @ 1900 hours to April 3, 2015 @ 1900 hours	



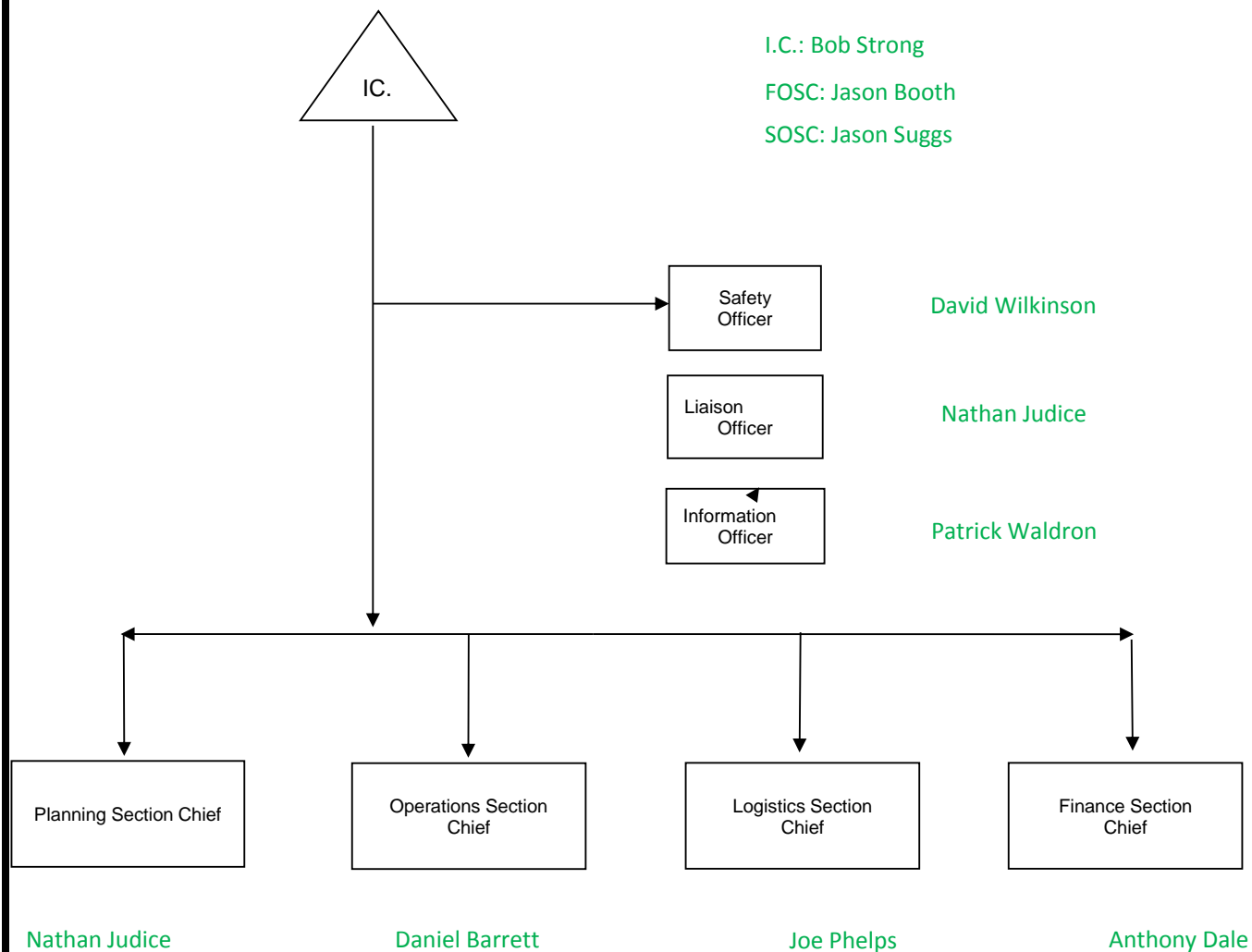
**CONESTOGA-ROVERS
& ASSOCIATES**

Prepared for:

CN

Incident Organization Chart ICS 207

CURRENT ORGANIZATION



Operational Period:

April 2, 2015 @ 1900 hours to April 3, 2015 @ 1900 hours



**CONESTOGA-ROVERS
& ASSOCIATES**

Prepared for:

CN

SITE SAFETY MESSAGE ICS 213

- PPE: FRC, safety boots, safety glasses, hard hat, hearing protection, safety vests, APRs when action levels are exceeded
- Watch footing, tie-off ladders, 3-Point Contact
- Watch out for slips, trips and falls
- Use proper lifting techniques, get help or use lifting equipment
- Keep Hydrated
- Follow adequate work/rest schedule
- Use intrinsically safe equipment in flammable/hazardous environments
- Alert response personnel of air monitoring readings above action levels for LEL and/or VOCs and don appropriate PPE
- Severe weather potential

Operational Period:

April 2, 2015 @ 1900 hours to April 3, 2015 @ 1900 hours