



Prepared for:

# INCIDENT ACTION PLAN COVER SHEET

Incident Name	Tar Creek Oil Spill
Incident Number	NRC Report #: 1118635
Date Prepared	June 8, 2015
Time Prepared	1500 hours
Prepared by	Randy Mayer Complete Environmental
Latitude	31.2743700 N
Longitude	-91.1052500 W
Operational Start Date/Time	June 8, 2015 @ 0700 hours
Operational Finish Date/Time	June 9, 2015 @ 0700 hours
<b>APPROVAL</b>	
FOSC <i>[Signature]</i>	US EPA – Leo Francendese
SOSC <i>[Signature]</i>	MDEQ – John Henderson
RP <i>Steve Freeman for receipt only</i>	ARRAY Op - Steven Ford

## TABLE OF CONTENTS

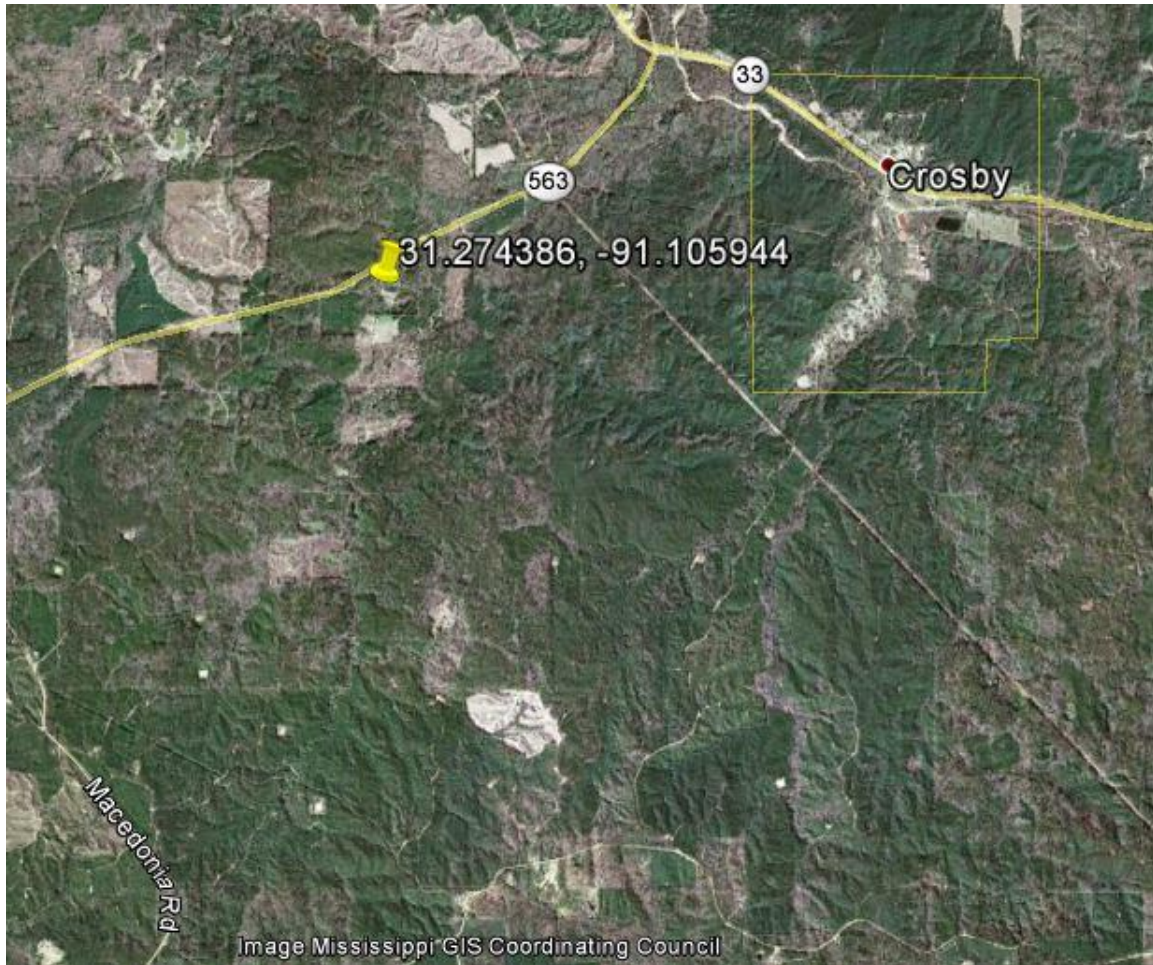
X	Incident Briefing (ICS 201)		
X	Summary of Current Actions		
X	Resources Summary		
X	Incident Objectives (ICS 202)		
X	Organization Assignment (ICS 203)		
X	Assignment List (ICS 204)		
X	Communications Plan (ICS 205)		
X	Medical Plan (ICS 206)		
X	Daily Safety and Health Message		



Prepared for:

# INCIDENT BRIEFING ICS 201 – 1A

## MAP / SKETCH



Location of Spill

June 8, 2015 @ 0700 hours to June 9, 2015 @ 0700 hours



Prepared for:

## INCIDENT BRIEFING ICS 201 – 2A

### SUMMARY OF CURRENT ACTIONS

June 8, 2015 to June 9, 2015 (0700 to 0700):

- Maintenance and inspection of containment measures
- Incident Action Plan preparation
- Manual recovery of removable oil
- Continue to conduct visual inspections of surrounding surface water and drainage features
- Air monitoring by for personnel protection
- Monitor weather conditions
- Assessment of transition phase from bulk oil recovery to O&M

June 8, 2015 @ 0700 hours to June 9, 2015 @ 0700 hours



Prepared for:

# INCIDENT BRIEFING

## ICS 201 – 3

### RESOURCES SUMMARY

RESOURCE	PROVIDER	ON-SCENE	ASSIGNMENT
UTV	ARRAY Op	1	Support
pickup trucks	USES/Code 3	2	Support
crew trucks	ARRAY Op	2	Support
Response trailer	ARRAY Op	1	Support
Flatbed trailer	ARRAY Op	1	Support
Roll off Boxes	ARRAY Op	2	Support
Power tools	ARRAY Op	multiple	Division B

### PERSONNEL SUMMARY

COMPANY	ON-SCENE	ASSIGNMENT
Complete Environmental	1	Environmental field support
USES	3	Cleanup
ARRAY Op	1	Support
Pipeline Oil & Gas	6	Support
Code 3	6	Cleanup
USCG	2	H&S and oversight
USEPA	1	UC
MDEQ	1	UC

June 8, 2015 @ 0700 hours to June 9, 2015 @ 0700 hours



Prepared for:

# **RESPONSE OBJECTIVES ICS 202-1A**

Incident Name	Tar Creek Oil Spill
Incident Number	NRC Report #: 1118635
Date Prepared	June 8, 2015
Time Prepared	1100 hours
Prepared by	Randy Mayer Complete Environmental
Latitude	31.2743700 N
Longitude	-91.1052500 W
Operational Start Date/Time	June 8, 2015 @ 0700 hours
Operational Finish Date/Time	June 9, 2015 @ 0700 hours

## **OBJECTIVES/PRIORITIES FOR OPERATIONAL PERIOD**

### PRIORITIES

- Safety of the public and responders
- Protect the environment
- Prevent additional migration
- Minimize property loss
- Facilitate production facility recovery
- Maintain public/media confidence

### OBJECTIVES

- Continue to conduct visual inspections of surrounding surface water and drainage features - activity will continue throughout operational period
- Maintenance and inspection of containment measures - activity will continue throughout operational period
- Continued product recovery using manual methods
- Preparation for Operations & Maintenance Plan (O&M)
- Daily IAP
- Finalizing O&M Plan

June 8, 2015 @ 0700 hours to June 9, 2015 @ 0700 hours



Prepared for:

## RESPONSE OBJECTIVES ICS 202-2

### WEATHER REPORT

From [www.Intellicast.com](http://www.Intellicast.com)

Monday  
06/08  
90 | 72 °F




**Monday** 20% Precip. / 0 in  
A mix of clouds and sun. A stray shower or thunderstorm is possible. High around 90F. Winds light and variable.




**Monday Night** 40% Precip. / 0.03 in  
Partly cloudy this evening. Scattered thunderstorms developing after midnight. Low 72F. Winds light and variable. Chance of rain 40%.

Tuesday  
06/09  
87 | 69 °F



**Tuesday** 60% Precip. / 0.15 in  
Variable clouds with scattered thunderstorms. High 87F. Winds W at 5 to 10 mph. Chance of rain 60%.



**Tuesday Night** 50% Precip. / 0.11 in  
Scattered thunderstorms during the evening, then partly cloudy overnight. Low 69F. Winds light and variable. Chance of rain 50%.

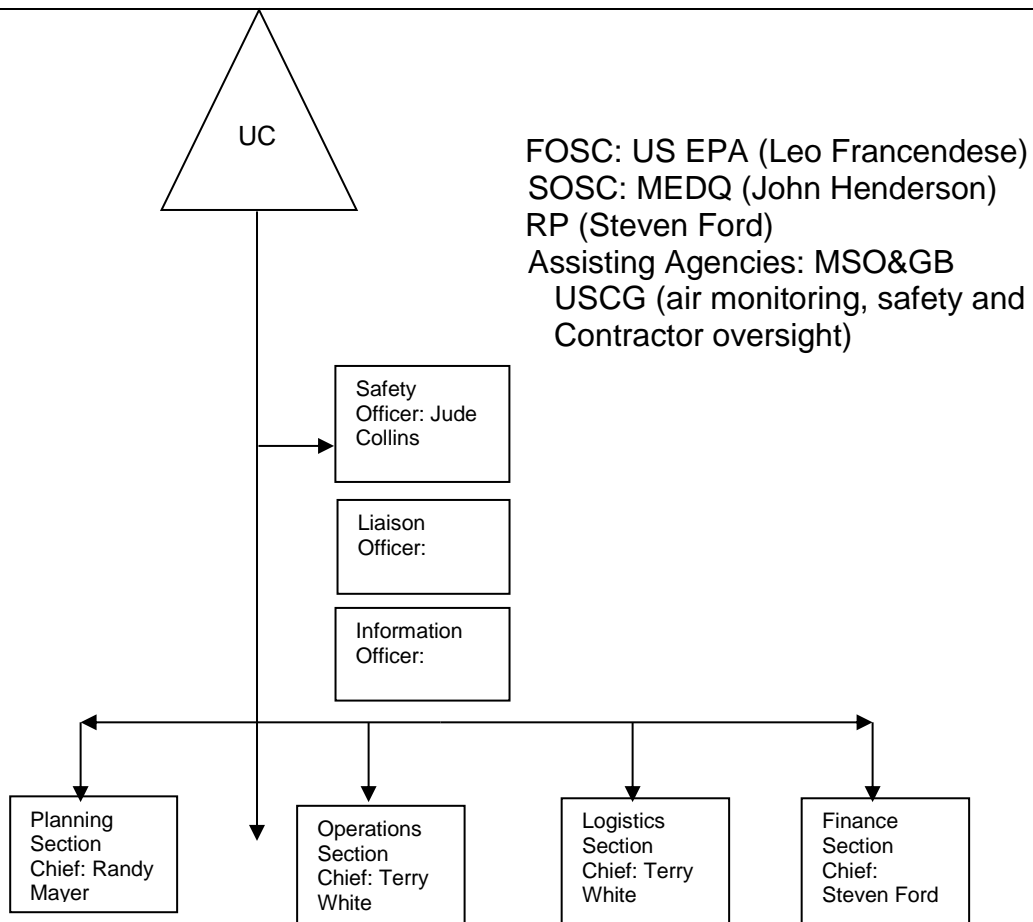
June 8, 2015 @ 0700 hours to June 9, 2015 @ 0700 hours



Prepared for:

# Organization Assignment 203

## CURRENT ORGANIZATION



June 8, 2015 @ 0700 hours to June 9, 2015 @ 0700 hours

<b>1. Incident Name:</b>		<b>2. Operational Period: (Date/Time)</b>		<b>ASSIGNMENT LIST ICS 204</b>	
Tar Creek Oil Spill		From: 08Jun2015 0700 To: 09Jun2015 0700			
<b>3. Branch:</b>		<b>4. Division/Group/Staging:</b>			
		Operational Group			
<b>5. Operations Personnel:</b>					
<b>ICS Position</b>	<b>Name</b>	<b>Company/Agency</b>	<b>Contact #(s)</b>		
Operations Section Chief:	Terry White	USES	225-335-7835		
Branch Director:					
Division Group Supervisor:					
<b>6. Resource Assigned: additional instructions</b> "x" indicates 204a attachment with					
<b>Strike Team/Task Force/ Resource Identifier</b>	<b>Leader</b>	<b>Contact Info #</b>	<b># of Persons</b>	<b>Reporting Info/ Notes/Remarks</b>	
Terry White	USES	225-335-7835	16		
<b>7. Work Assignments:</b>					
<p><b>Division A</b> – (area inside of the secondary containment) pads and absorbent are being placed inside containment to prevent migration of product. 80% complete with bulk recovery operations. 3 workers in Division A. No other operations scheduled for this Division during this response action.</p> <p><b>Division B</b> – (from secondary containment to first branch on unnamed tributary). 90 % complete with bulk recovery operations. Manual recovery operations only, 10 workers recovering recoverable oil with absorbent pads and snare, removing oily vegetation, and adding absorbent material.</p> <p><b>Division C</b> – (from first branch in unnamed tributary to confluence of unnamed tributary and Tar Creek) 100% complete with bulk recovery operations. Ready for O&amp;M.</p>					
<b>8. Special Instructions:</b>					
Walk thru with RP and MDEQ to determine percent complete and to assess when O&M will go into effect. Also, locations for O&M collection points will be established.					
<b>9. Communications (radio and/or phone contact numbers needed for this assignment):</b>					
<b>Name/Function</b>	<b>Radio: Freq./System/Channel</b>	<b>Phone</b>	<b>Cell/Pager</b>		
<b>Emergency Communications:</b>					
<b>10. Prepared by: (RESL) (Date/Time)</b>	<b>11. Prepared by: (PSC) (Date/Time)</b>		<b>12. Prepared by: (OPS) (Date/Time)</b>		
<b>ASSIGNMENT LIST</b>					<b>ICS 204</b>

<b>1. Incident Name:</b>		<b>2. Operational Period: (Date/Time)</b>		<b>ASSIGNMENT LIST ICS 204</b>	
Tar Creek Oil Spill		From: 08Jun2015 0700 To: 09Jun2015 0700			
<b>3. Branch:</b>		<b>4. Division/Group/Staging:</b>			
		Environmental Group			
<b>5. Operations Personnel:</b>					
<b>ICS Position</b>	<b>Name</b>	<b>Company/Agency</b>	<b>Contact #(s)</b>		
<b>Operations Section Chief:</b>	Guillaume Pique	USCG GST	717-405-0646		
<b>Branch Director:</b>					
<b>Division Group Supervisor:</b>					
<b>6. Resource Assigned: additional instructions</b> "x" indicates 204a attachment with					
<b>Strike Team/Task Force/ Resource Identifier</b>	<b>Leader</b>	<b>Contact Info #</b>	<b># of Persons</b>	<b>Reporting Info/ Notes/Remarks</b>	↓
Guillaume Pique	USCG GST	717-405-0646	2		
Caleb Covington	MDEQ		1		
<b>7. Work Assignments:</b>					
USCG – Air monitoring for personnel protection through Divisions A, B and C. H2S, Benzene, O2, LEL and VOC					
<b>8. Special Instructions:</b>					
USCG discovered a dead turtle, frog and small fish along the creek bank of unnamed tributary. Specimens were bagged and put on ice until MDEQ can pick them up.					
<b>9. Communications (radio and/or phone contact numbers needed for this assignment):</b>					
<b>Name/Function</b>	<b>Radio: Freq./System/Channel</b>	<b>Phone</b>	<b>Cell/Pager</b>		
<b>Emergency Communications:</b>					
<b>10. Prepared by: (RESL) (Date/Time)</b>		<b>11. Prepared by: (PSC) (Date/Time)</b>		<b>12. Prepared by: (OPS) (Date/Time)</b>	
<b>ASSIGNMENT LIST</b>					<b>ICS 204</b>



# Communications Plan ICS 205

RP – Steven Ford	Cell: 601-660-7625 stevenfordwork@gmail.com
CE – Randy Mayer	Cell: 225-933-4534 e-mail: <a href="mailto:rmayer@kelleycompanies.com">rmayer@kelleycompanies.com</a>
EPA – Leo Francendese	Cell: 770-570-8106 e-mail: <a href="mailto:francendese.leo@epa.gov">francendese.leo@epa.gov</a>
MDEQ – John Henderson	Cell: 601-906-8655 e-mail: <a href="mailto:john_henderson@deg.state.ms.us">john_henderson@deg.state.ms.us</a>
USES – Terry White	Cell: 225-335-7835 <a href="mailto:twhite@usesgroup.com">twhite@usesgroup.com</a>
MSO&GB – Alan Floyd	Cell: 601-835-6802
MSO&GB – Robert Collier	Cell: 601-443-1791 <a href="mailto:rcollier@ogb.state.ms.us">rcollier@ogb.state.ms.us</a>
USES – Jude Collins	Cell: 225-328-5455 <a href="mailto:Collinsjude13@gmail.com">Collinsjude13@gmail.com</a>
Pipeline Oil and Gas – Troy Calapp	Cell: 602-680-8153 <a href="mailto:tcalapp@pipelineoilandgas.com">tcalapp@pipelineoilandgas.com</a>
ARRAY Op – Steve Foreman	Cell: 318316-1354 <a href="mailto:Sforeman1968@gmail.com">Sforeman1968@gmail.com</a>
June 8, 2015 @ 0700 hours to June 9, 2015 @ 0700 hours	




Prepared for:

# Medical Plan 206-1A

## Medical Plan

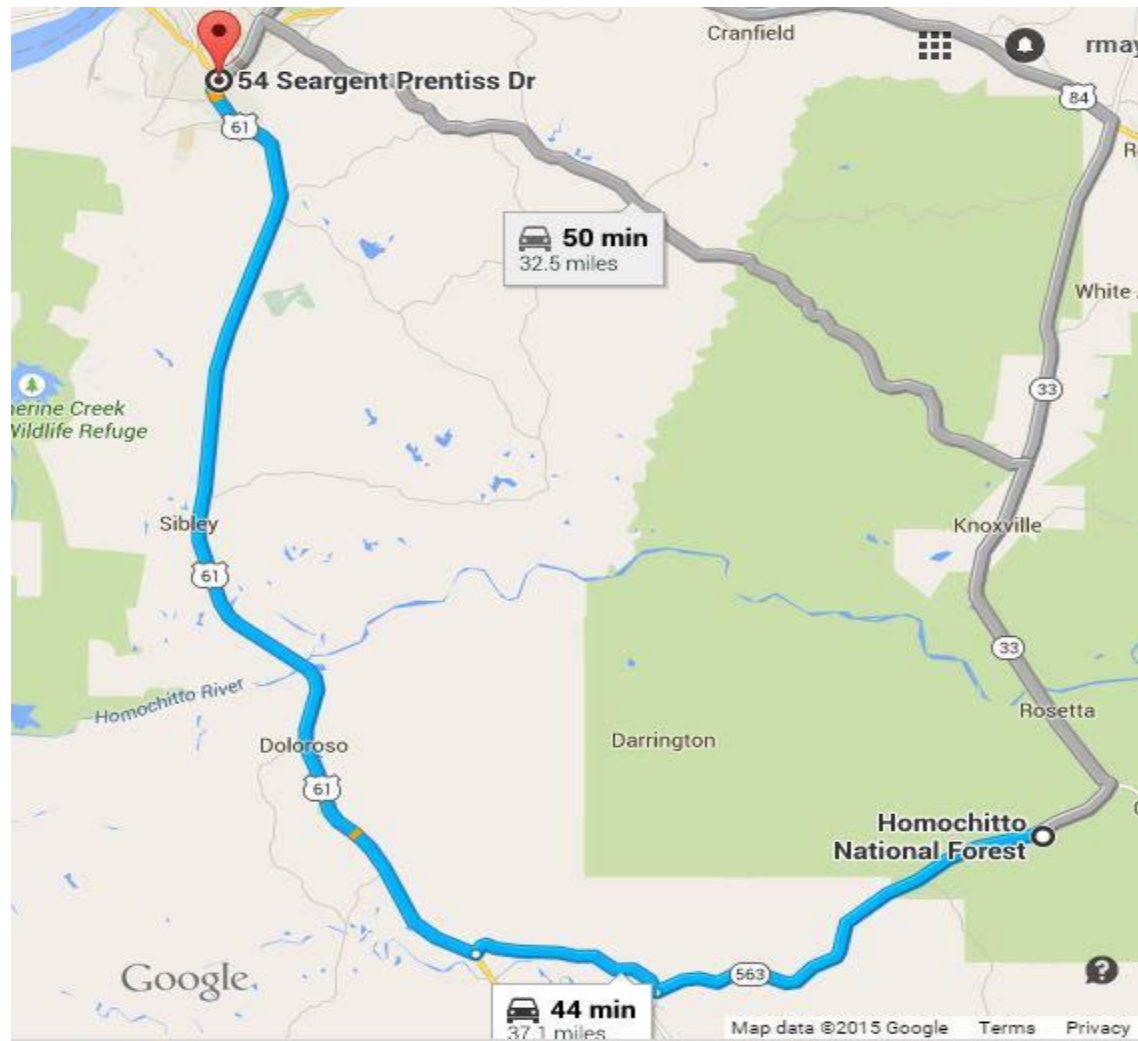
### Emergency Information

Contact	Phone Number
Local Police	911
Fire Department	911
Ambulance	911
<b>Primary Local Hospital:</b> Natchez Regional Medical Center 54 Seargent Prentiss Dr Natchez, MS 39120 (Reference attached map for directions)	(601) 443-2100
<b>Local Hospital (2<sup>nd</sup> Option):</b>	
National Poison Center	800-222-1222
<div><div><div><div><div></div><div>via MS-563 S and US-61 N</div></div><div><div>42 min without traffic</div><div><a href="#">Show traffic</a></div></div><div><div>44 min</div><div>37.1 miles</div></div></div></div><div><div><b>Homochitto National Forest, 1200 Highway 184 E</b></div><div>Meadville, MS 39653</div></div><div><div><div><div>↑</div><div>Head southwest on MS-563 S toward Evergreen Ln/Parker Rd</div><div>9.4 mi</div></div><div><div>↘</div><div>Turn right onto Buffalo Rd</div><div>4.2 mi</div></div><div><div>↘</div><div>Turn right onto US-61 N</div><div>23.3 mi</div></div><div><div>↘</div><div>Turn right onto Seargent Prentiss Dr</div><div><div><div><div></div><div>i</div><div></div></div><div>Destination will be on the left</div></div></div><div>0.1 mi</div></div></div></div><div><div><b>54 Seargent Prentiss Dr</b></div><div>Natchez, MS 39120</div></div></div>	

# Medical Plan 206-1B

## Medical Plan

### Primary Local Hospital: Natchez Regional Medical Center Map





Prepared for:

## SITE SAFETY MESSAGE

- **PPE: Safety boots, safety glasses, hard hat, hearing protection, safety vests**
- **Watch out for traffic on the interstate and slips, trips and falls**
- **Use proper lifting techniques, get help or use lifting equipment**
- **Keep Hydrated**
- **Follow adequate work/rest schedule**
- **Use intrinsically safe equipment in flammable/hazardous environments**
- **Severe weather potential**

**June 8, 2015 @ 0700 hours to June 9, 2015 @ 0700 hours**