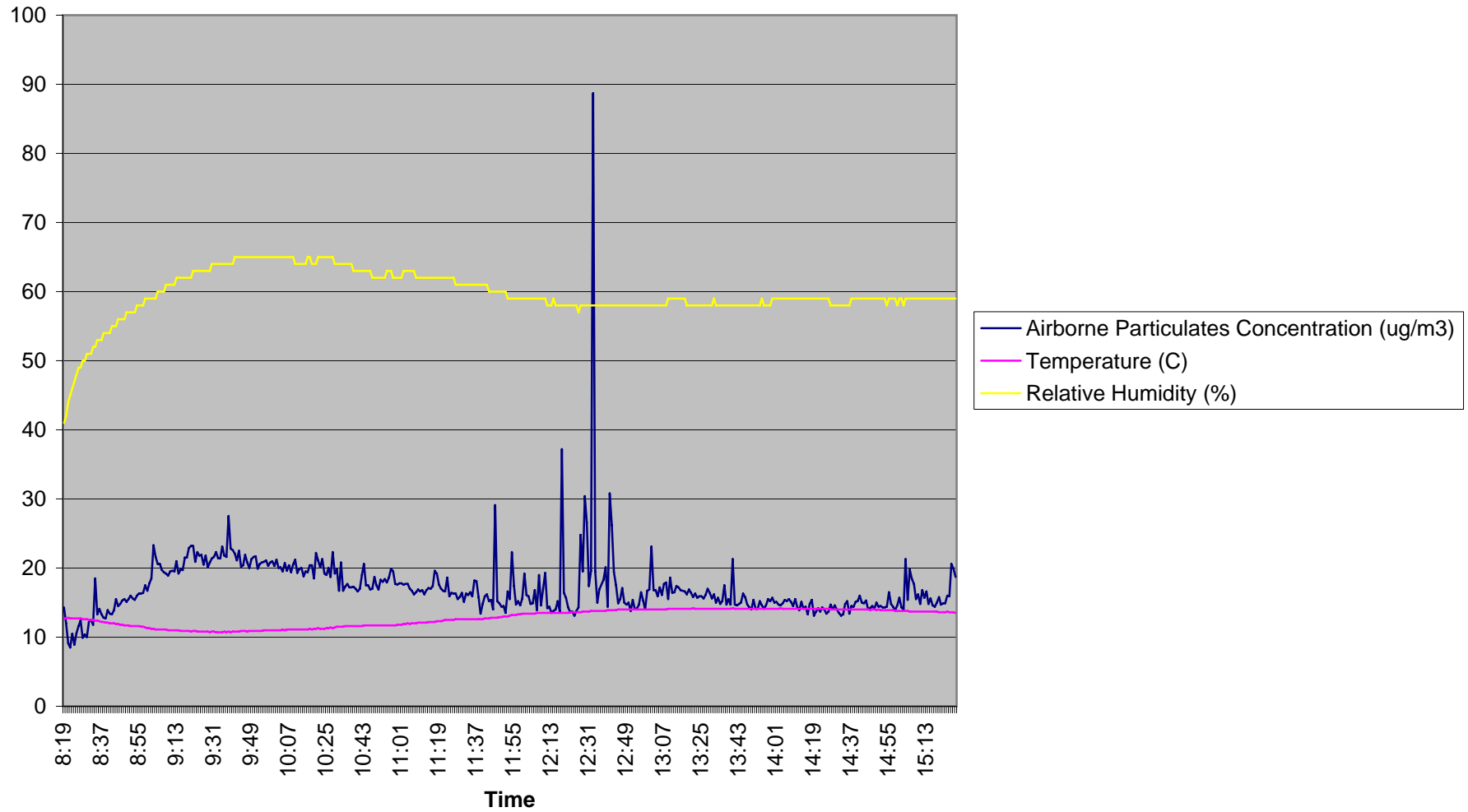


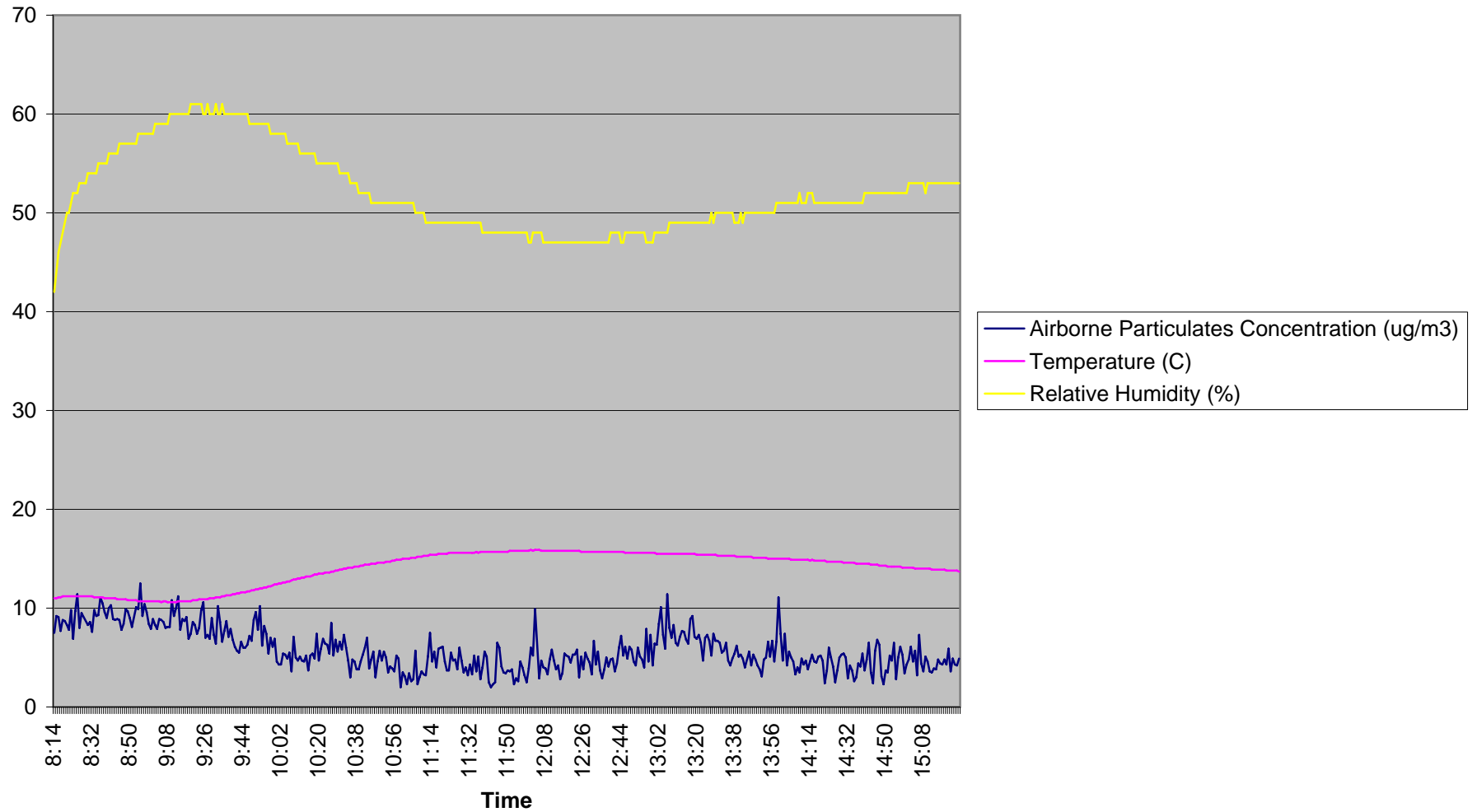
## Upwind (UW-1) Location

October 24, 2005



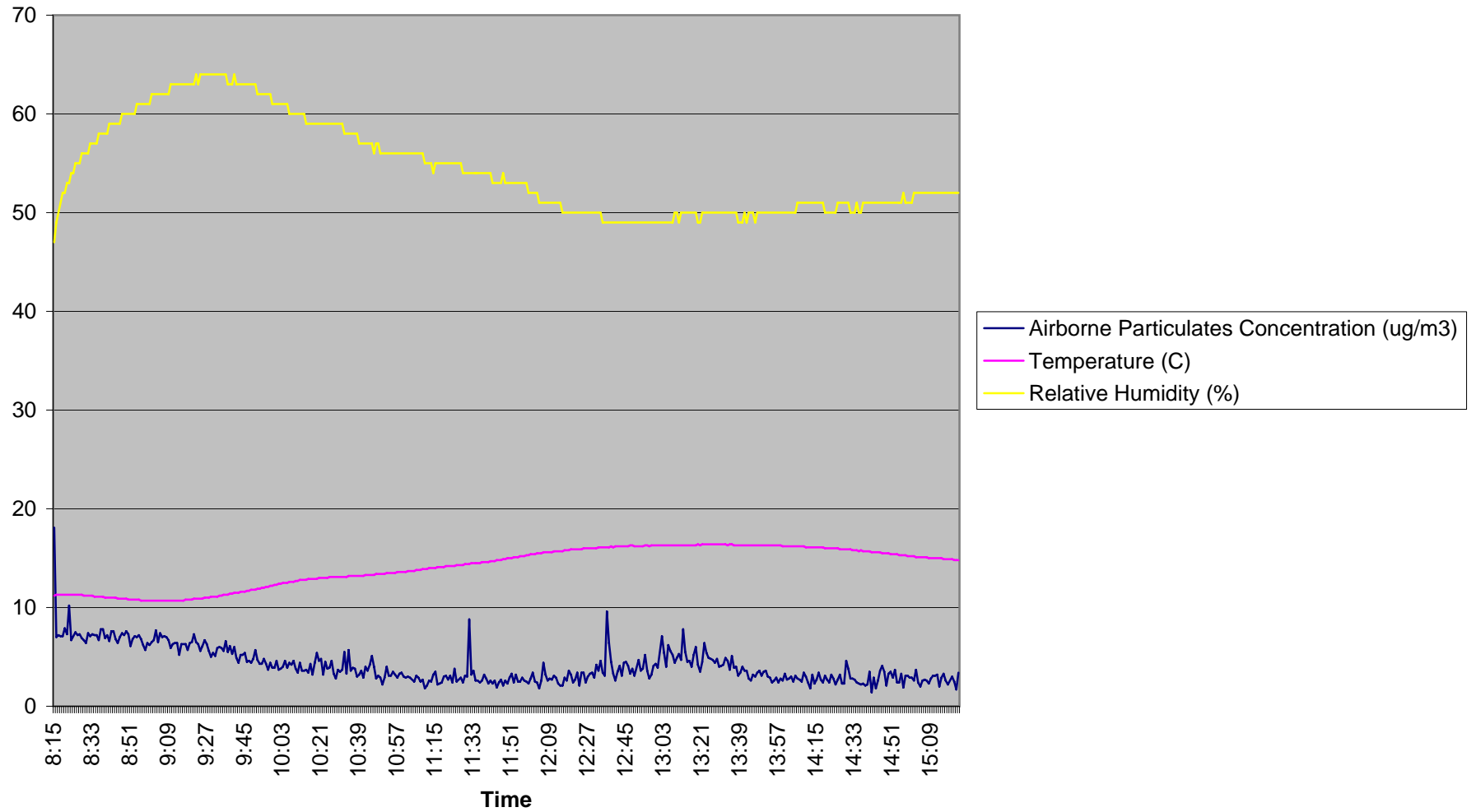
## Downwind 1 (DW-1) Location

October 24, 2005



## Downwind 2 (DW-2) Location

October 24, 2005



## The Arbors (ARB-1) Location

October 24, 2005

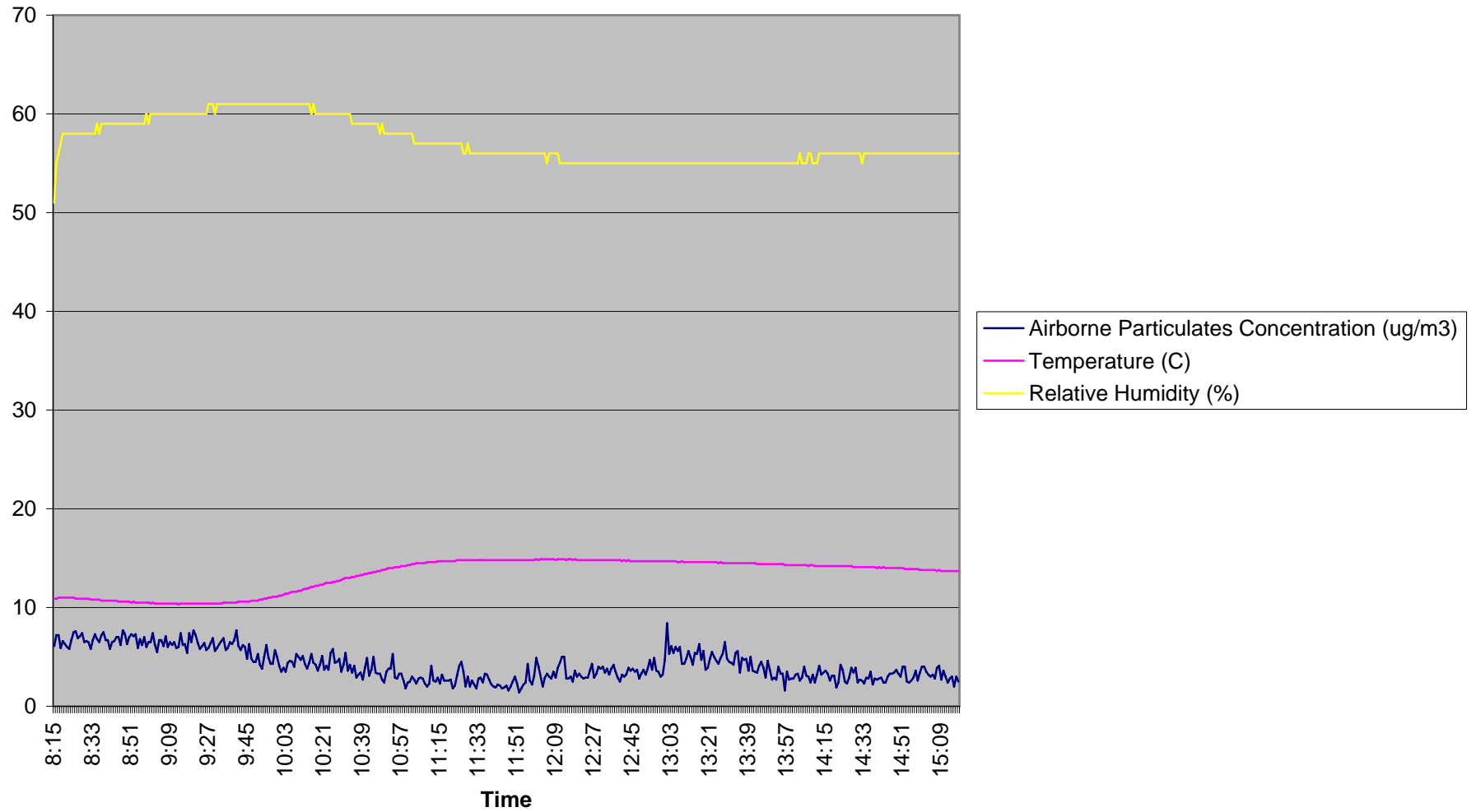




Figure 1  
AIR SAMPLING STATION LOCATIONS  
OCTOBER 24, 2005

PORT REFINERY SITE  
VILLAGE OF RYE BROOK, NEW YORK

US ENVIRONMENTAL PROTECTION AGENCY  
REMOVAL SUPPORT TEAM  
CONTRACT # 68-W-00-113

DRAWN BY: W. HENSBERGER  
EPA OSC: J. HARMON  
RST SPM: S. CANNON  
FILENAME: AirSamplingStations

DATE MODIFIED: 10-24-05

Weston Solutions, Inc.  
Federal Programs Division  
Region II Removal Support Team  
  
IN ASSOCIATION WITH  
INNOVATIVE TECHNOLOGICAL SOLUTIONS, INC.,  
SCIENTIFIC AND ENVIRONMENTAL ASSOCIATES, INC.,  
AND TERRANEAR TECHNOLOGIES GROUP