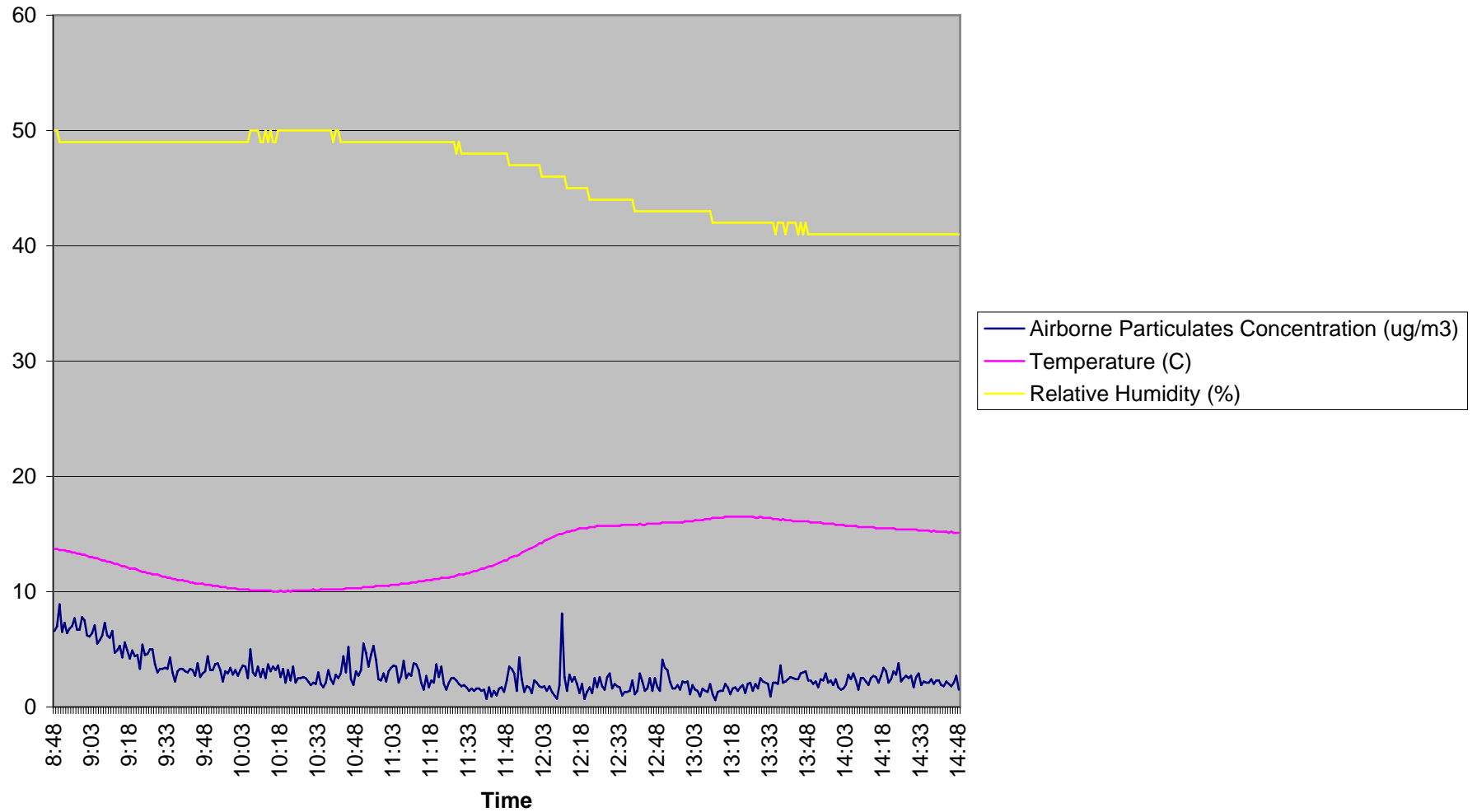


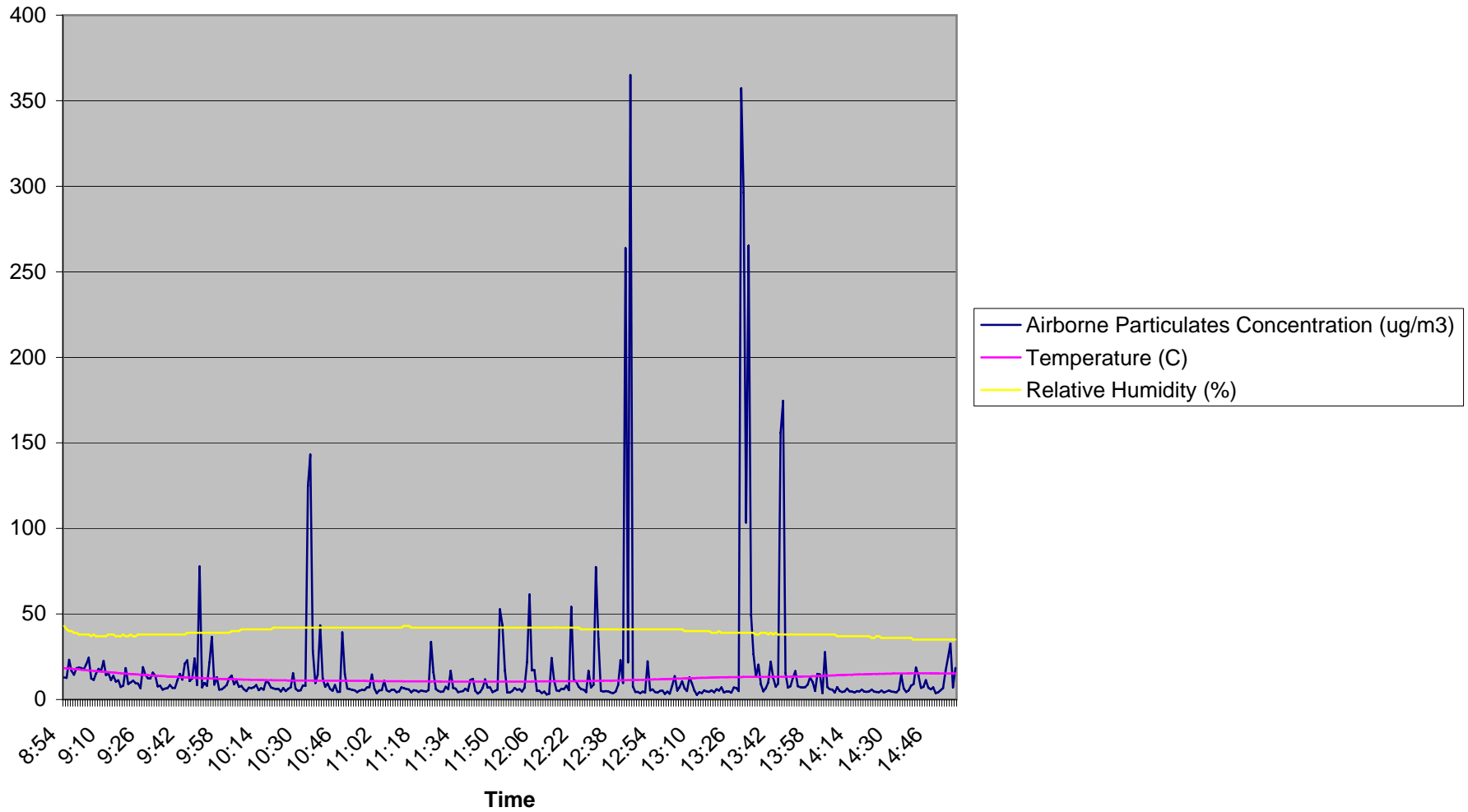
Upwind (UW-1) Location

October 28, 2005



Downwind 1 (DW-1) Location

October 28, 2005



Downwind 2 (DW-2) Location

October 28, 2005

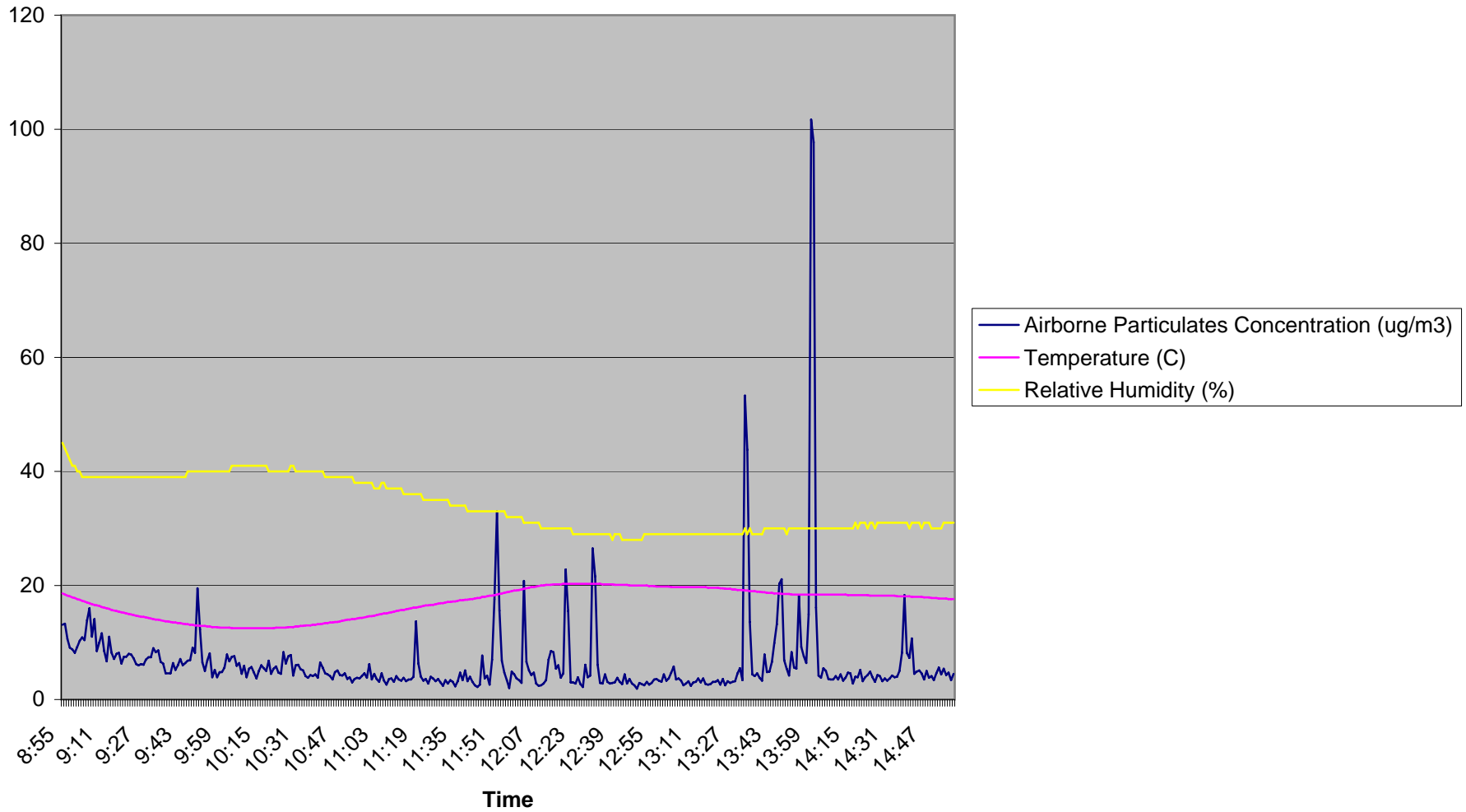




Figure 1
AIR SAMPLING STATION LOCATIONS
OCTOBER 28, 2005

PORT REFINERY SITE
VILLAGE OF RYE BROOK, NEW YORK

US ENVIRONMENTAL PROTECTION AGENCY
REMOVAL SUPPORT TEAM
CONTRACT # 68-W-00-113

DRAWN BY: W. HENSBERGER
EPA OSC: J. HARMON
RST SPM: S. CANNON
FILENAME: AirSamplingStations

DATE MODIFIED: 10-28-05

Weston Solutions, Inc.
Federal Programs Division
Region II Removal Support Team

IN ASSOCIATION WITH
INNOVATIVE TECHNOLOGICAL SOLUTIONS, INC.,
SCIENTIFIC AND ENVIRONMENTAL ASSOCIATES, INC.,
AND TERRANEAR TECHNOLOGIES GROUP