

**Photographic Documentation Log**  
**Old Saratoga Hospital Site**  
**Providence Township, Saratoga County, New York**  
**August 4 and September 16 and 17, 2015**



**Photograph 1:** Location P001-BA-001 in the west wing basement. The sample was collected from pipe insulation. Analytical results indicate that the sample contains 44.40% chrysotile asbestos.



**Photograph 2:** Location P001-BA-002 in the west wing basement. The sample was collected from pipe insulation. Analytical results indicate that the sample contains 57.10% chrysotile asbestos.

**Photographic Documentation Log**  
**Old Saratoga Hospital Site**  
**Providence Township, Saratoga County, New York**  
**August 4 and September 16 and 17, 2015**



**Photograph 3:** Location P001-BA-003 in the west wing basement. The sample was collected from material outside of “Asbestos” labeled bags. Analytical results indicate that the sample contains 33.30% chrysotile asbestos.



**Photograph 4:** Location P001-BA-004 in west wing basement. The sample was collected from a debris pile on the floor. Analytical results indicate that the sample was non-detect for asbestos.

**Photographic Documentation Log**  
**Old Saratoga Hospital Site**  
**Providence Township, Saratoga County, New York**  
**August 4 and September 16 and 17, 2015**



**Photograph 5:** Location P001-BA-005 in west wing basement. The sample was collected from insulation around a suspect boiler tank. Analytical results indicate that the sample contains 15.80% amosite and 5.26% chrysotile asbestos.



**Photograph 6:** Location P001-BA-006 in the west wing basement. The sample was collected from pipe insulation. Analytical results indicate that the sample contains 26.70% chrysotile asbestos.

**Photographic Documentation Log**  
**Old Saratoga Hospital Site**  
**Providence Township, Saratoga County, New York**  
**August 4 and September 16 and 17, 2015**



**Photograph 7:** Location P001-BA-007 in west wing basement. The sample was collected from a debris pile on the floor. Analytical results indicate that the sample was non-detect for asbestos.



**Photograph 8:** Location P001-BA-008 in west wing basement. The sample was collected from a debris pile on floor. Analytical results indicate that the sample contains 4.82% chrysotile asbestos.



**Photographic Documentation Log**  
**Old Saratoga Hospital Site**  
**Providence Township, Saratoga County, New York**  
**August 4 and September 16 and 17, 2015**



**Photograph 9:** Location P001-BA-009 in west wing basement. The sample was collected from a debris pile on floor. Analytical results indicate that the sample was non-detect for asbestos.



**Photograph 10:** Location P001-BA-010 in the west wing basement. The sample was collected from pipe insulation. Analytical results indicate that the sample contains 21.10% chrysotile asbestos.

**Photographic Documentation Log**  
**Old Saratoga Hospital Site**  
**Providence Township, Saratoga County, New York**  
**August 4 and September 16 and 17, 2015**



**Photograph 11:** Location P001-BA-011 in east wing basement. The sample was collected from floor tile. Analytical results indicate that the sample was non-detect for asbestos.



**Photograph 12:** Location P001-BA-012 in east wing basement. The sample was collected from a debris pile. Analytical results indicate that the sample was non-detect for asbestos.

**Photographic Documentation Log**  
**Old Saratoga Hospital Site**  
**Providence Township, Saratoga County, New York**  
**August 4 and September 16 and 17, 2015**



**Photograph 13:** Location P001-BA-013 in east wing basement. The sample was collected from “Asbestos” labeled poly trash bag. Analytical results indicate that the sample contains 19.10% chrysotile asbestos.



**Photograph 14:** Location P001-BA-014 in east wing basement. The sample was collected from a debris pile on floor. Analytical results indicate that the sample contains 5.40% chrysotile asbestos.



**Photographic Documentation Log**  
**Old Saratoga Hospital Site**  
**Providence Township, Saratoga County, New York**  
**August 4 and September 16 and 17, 2015**



**Photograph 15:** Location P001-BA-015 in west wing first floor. The sample was collected from ceiling tile that had fallen to the floor. Analytical results indicate that the sample was non-detect for asbestos.



**Photograph 16:** Location P001-BA-016 in west wing first floor. The sample was collected from ceiling tile. Analytical results indicate that the sample was non-detect for asbestos.



**Photographic Documentation Log**  
**Old Saratoga Hospital Site**  
**Providence Township, Saratoga County, New York**  
**August 4 and September 16 and 17, 2015**



**Photograph 17:** Location P001-BA-017 in west wing first floor. The sample was collected from degrading ceiling tile. Analytical results indicate that the sample was non-detect for asbestos.



**Photograph 18:** Location P001-BA-018 in west wing first floor. The sample was collected from degrading drywall. Analytical results indicate that the sample was non-detect for asbestos.

**Photographic Documentation Log**  
**Old Saratoga Hospital Site**  
**Providence Township, Saratoga County, New York**  
**August 4 and September 16 and 17, 2015**



**Photograph 19:** Location P001-BA-019 in east wing first floor. The sample was collected from pyrobar/mortar material. Analytical results indicate that the sample was non-detect for asbestos.



**Photograph 20:** Location P001-BA-020 outside of the building, approximately 15 feet to the north in a pit. The sample was collected from insulation on a suspect tank. Analytical results indicate that the sample contains 36.40% chrysotile asbestos.



**Photographic Documentation Log**  
**Old Saratoga Hospital Site**  
**Providence Township, Saratoga County, New York**  
**August 4 and September 16 and 17, 2015**



**Photograph 21:** Location P001-BA-021 outside the northwest entrance to the building, adjacent to sample location P001-BA010. The sample was collected from a debris pile. Analytical results indicate that the sample contains 36.40% chrysotile asbestos.



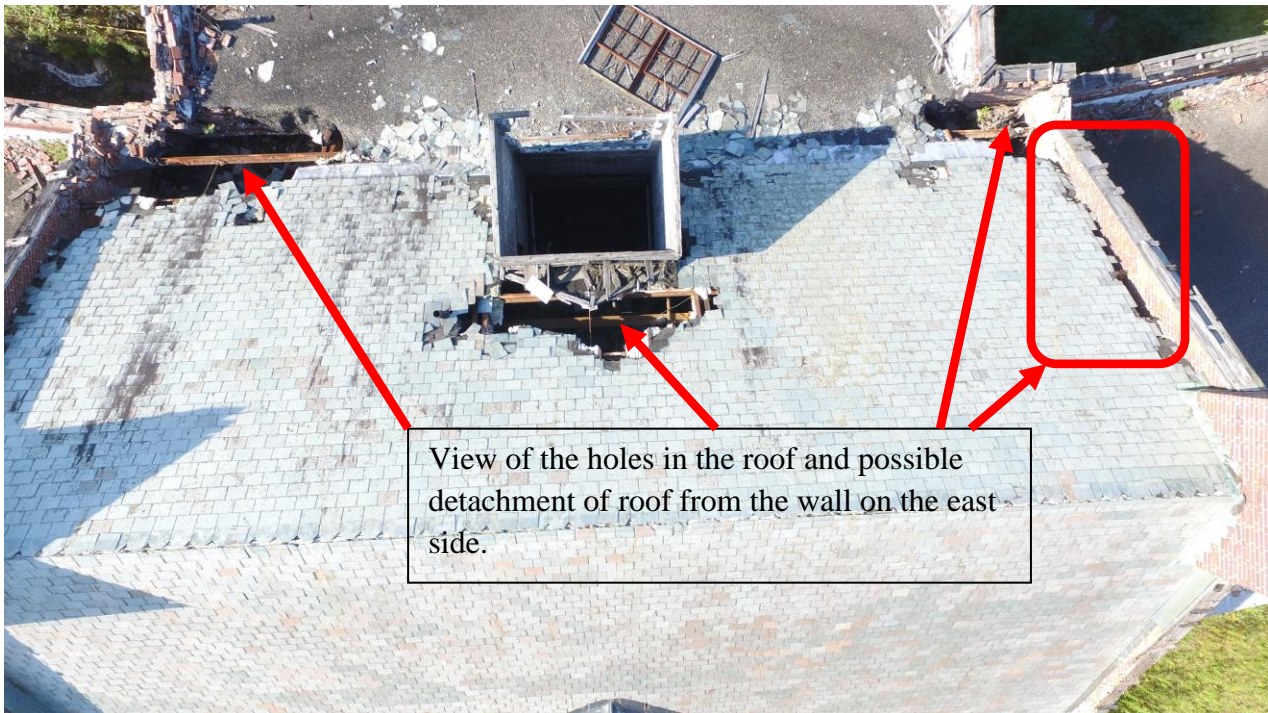
**Photograph 22:** Central front entrance to facility taken from drone camera during ascent to photograph roof.



**Photographic Documentation Log  
Old Saratoga Hospital Site  
Providence Township, Saratoga County, New York  
August 4 and September 16 and 17, 2015**



**Photograph 23:** Roof over main entrance to facility. Photograph taken with the camera on the drone.



View of the holes in the roof and possible detachment of roof from the wall on the east side.

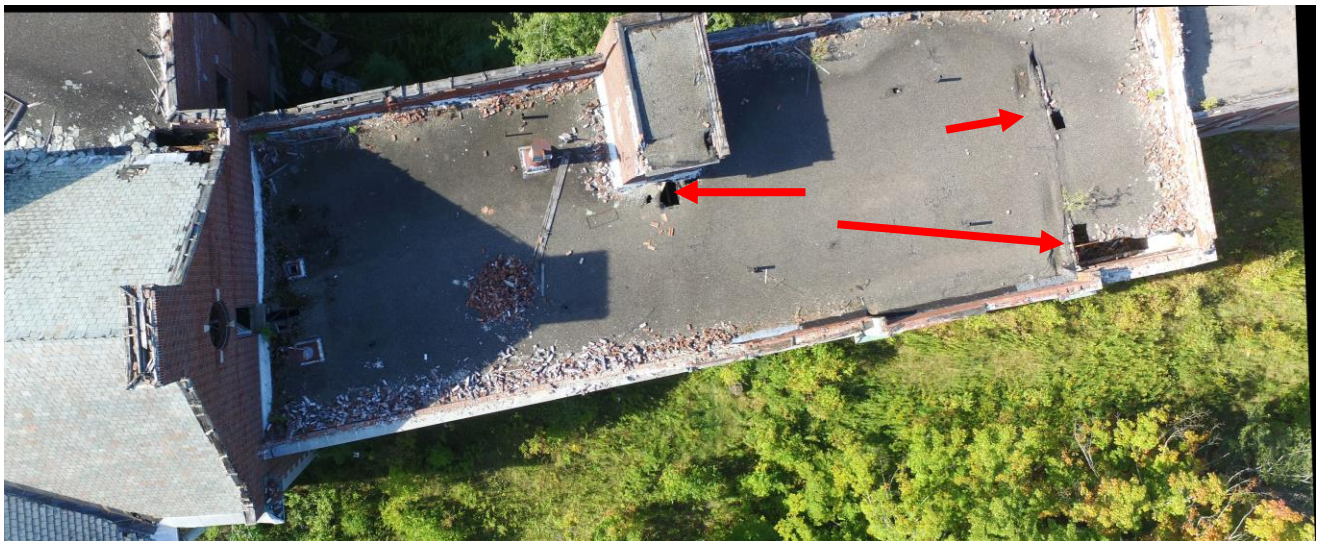
**Photograph 24:** Closer view of roof in Photograph 23. Holes in roof and structural damage can be seen in picture.



**Photographic Documentation Log  
Old Saratoga Hospital Site  
Providence Township, Saratoga County, New York  
August 4 and September 16 and 17, 2015**



**Photograph 25:** Close-up of Photograph 24 showing possible parting of roof from east wall.



**Photograph 26:** Photograph of roof east of central entrance showing additional holes on roof.

**Photographic Documentation Log  
Old Saratoga Hospital Site  
Providence Township, Saratoga County, New York  
August 4 and September 16 and 17, 2015**



**Photograph 27:** Panoramic photograph of roof west of central entrance showing additional holes in roof.



**Photograph 28:** Location P001-BA-022. The sample was collected from pipe wrap fallen onto partially collapsed wall. Analytical results indicate that the sample contains 50.00% chrysotile asbestos.



**Photographic Documentation Log  
Old Saratoga Hospital Site  
Providence Township, Saratoga County, New York  
August 4 and September 16 and 17, 2015**



**Photograph 29:** Location P001-BA-024. The sample was collected from pipe wrap fallen onto floor. Analytical results indicate that the sample contains 57.10% chrysotile asbestos.



**Photograph 30:** Location P001-BA-025. The sample was collected from deteriorated pipe wrap on vertical pipe. Analytical results indicate that the sample contains 57.10% chrysotile asbestos.

**Photographic Documentation Log**  
**Old Saratoga Hospital Site**  
**Providence Township, Saratoga County, New York**  
**August 4 and September 16 and 17, 2015**



**Photograph 31:** Location P001-BA-026. The sample was collected from deteriorated pipe wrap on vertical pipe. Broken, opened window in background. Analytical results indicate that the sample contains 66.70% chrysotile asbestos.



**Photograph 32:** Location P001-BA-027. The sample was collected from deteriorated pipe wrap at the base of a vertical pipe. Analytical results indicate that the sample contains 44.40% chrysotile asbestos.



**Photographic Documentation Log  
Old Saratoga Hospital Site  
Providence Township, Saratoga County, New York  
August 4 and September 16 and 17, 2015**



**Photograph 33:** Location P001-BA-028. The sample was collected from pipe wrap on floor. Analytical results indicate that the sample contains 57.10% chrysotile asbestos.



**Photograph 34:** Location P001-BA-029. The sample was collected from pipe wrap protruding from wall. The pipe is partially embedded in the wall. There is an adjacent pipe and pipe wrap similar to this. Several broken/open windows are located in the room. Analytical results indicate that the sample contains 30.80% chrysotile asbestos.



**Photographic Documentation Log  
Old Saratoga Hospital Site  
Providence Township, Saratoga County, New York  
August 4 and September 16 and 17, 2015**



**Photograph 35:** Location P001-BA-030. The sample was collected from deteriorated pipe wrap on vertical pipe. Analytical results indicate that the sample contains 50.00% chrysotile asbestos.



**Photograph 36:** The same room where sample P001-BA-030 was collected. There is an abundant amount of deteriorated pipe wrap in the room and a partially boarded up window.

**Photographic Documentation Log**  
**Old Saratoga Hospital Site**  
**Providence Township, Saratoga County, New York**  
**August 4 and September 16 and 17, 2015**



**Photograph 37:** Location P001-BA-031. The sample was collected from pipe wrap fallen onto floor from overhead pipe. Analytical results indicate that the sample contains 57.10% chrysotile asbestos.



**Photograph 38:** The same room where sample P001-BA-031 was collected. There is an abundant amount of deteriorated pipe wrap in the room.



**Photographic Documentation Log**  
**Old Saratoga Hospital Site**  
**Providence Township, Saratoga County, New York**  
**August 4 and September 16 and 17, 2015**



**Photograph 39:** Location P001-PC-001. The paint chip sample was collected in basement and analyzed for toxicity characteristic leaching procedure (TCLP) metal analysis (barium, cadmium, and lead only). The results were 127 J micrograms per liter ( $\mu\text{g/L}$ ) for barium, 26.6 J  $\mu\text{g/L}$  for cadmium, and 41,100  $\mu\text{g/L}$  for lead.