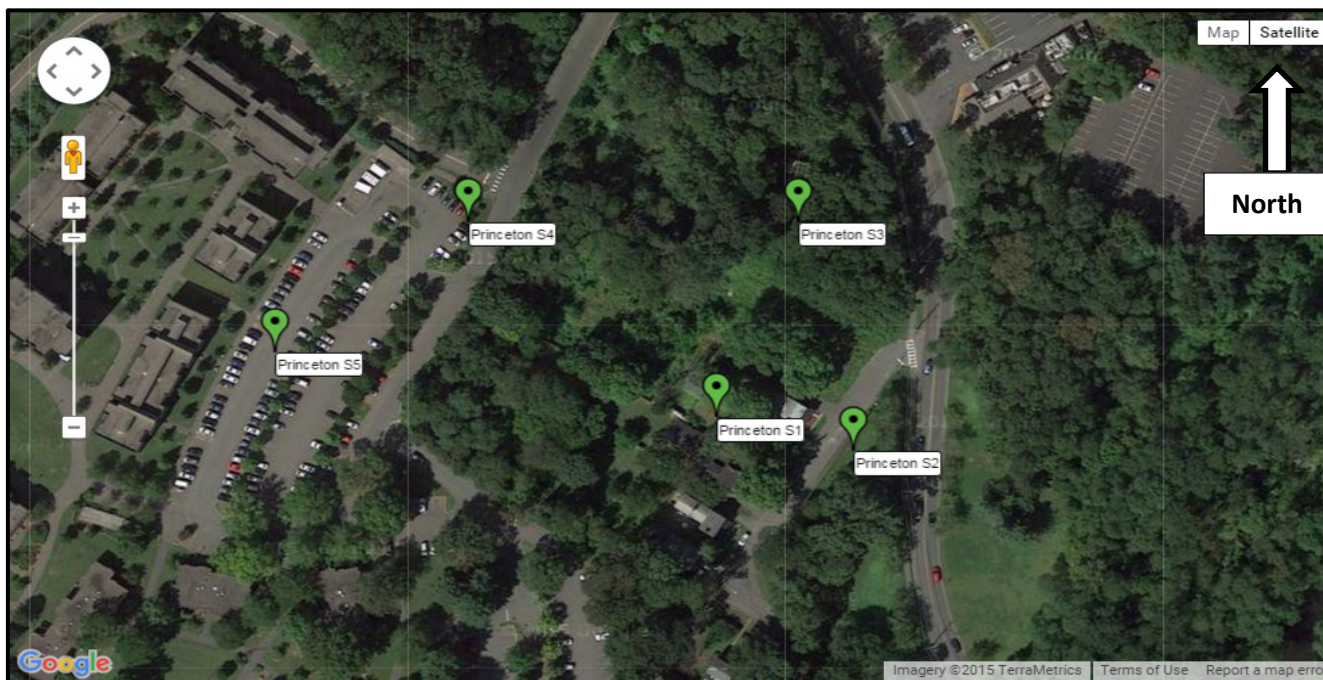


Perimeter Air Sampling Results Summary  
September 23, 2015  
Princeton Recycles Site  
Princeton, NJ



Sample Location	Benzo[a]pyrene	PCBs	Lead
Action Levels	0.1 ug/m <sup>3</sup>	0.5 ug/m <sup>3</sup>	0.15 ug/m <sup>3</sup>
Princeton S1	ND (<0.19 ug/m <sup>3</sup> )	ND (0.045 ug/m <sup>3</sup> )	ND (0.046 ug/m <sup>3</sup> )
Princeton S2	ND (<0.19 ug/m <sup>3</sup> )	ND (0.045 ug/m <sup>3</sup> )	ND (0.046 ug/m <sup>3</sup> )
Princeton S3	ND (<0.19 ug/m <sup>3</sup> )	ND (0.045 ug/m <sup>3</sup> )	ND (0.046 ug/m <sup>3</sup> )
Princeton S4	ND (<0.19 ug/m <sup>3</sup> )	ND (0.045 ug/m <sup>3</sup> )	ND (0.045 ug/m <sup>3</sup> )
Princeton S5	ND (<0.19 ug/m <sup>3</sup> )	ND (0.041 ug/m <sup>3</sup> )	ND (0.046 ug/m <sup>3</sup> )

ND = Non-detect

-- = Not Sampled

ug/m<sup>3</sup> = micrograms per meter cubed

Comments: Excavation activities continued in the northwest portion of the property. Samples collected to establish background concentrations. Station S3 was used for background readings.