



EPA To Conduct Removal Action Princeton Recycles Site Basin Street, Princeton, New Jersey

Community Update

August 2015

EPA TO REMOVE CONTAMINATED SOIL:

- **Work will be ongoing from September through the end of 2015. Work includes the excavation of contaminated soil and the transportation by truck of this soil to appropriate disposal facilities.**
- **EPA will monitor the air on the site during the excavation and loading activities to ensure that there are no unacceptable airborne releases of dust or contamination into the neighborhood.**

For more information, please contact:

Cris D'Onofrio
On-Scene Coordinator
(732) 906-6977
donofrio.cris@epa.gov

David Rosoff
On-Scene Coordinator
(732) 906-6879
rosoff.david@epa.gov

Pat Seppi
Community Involvement Coordinator
(646) 369-0068
seppi.pat@epa.gov

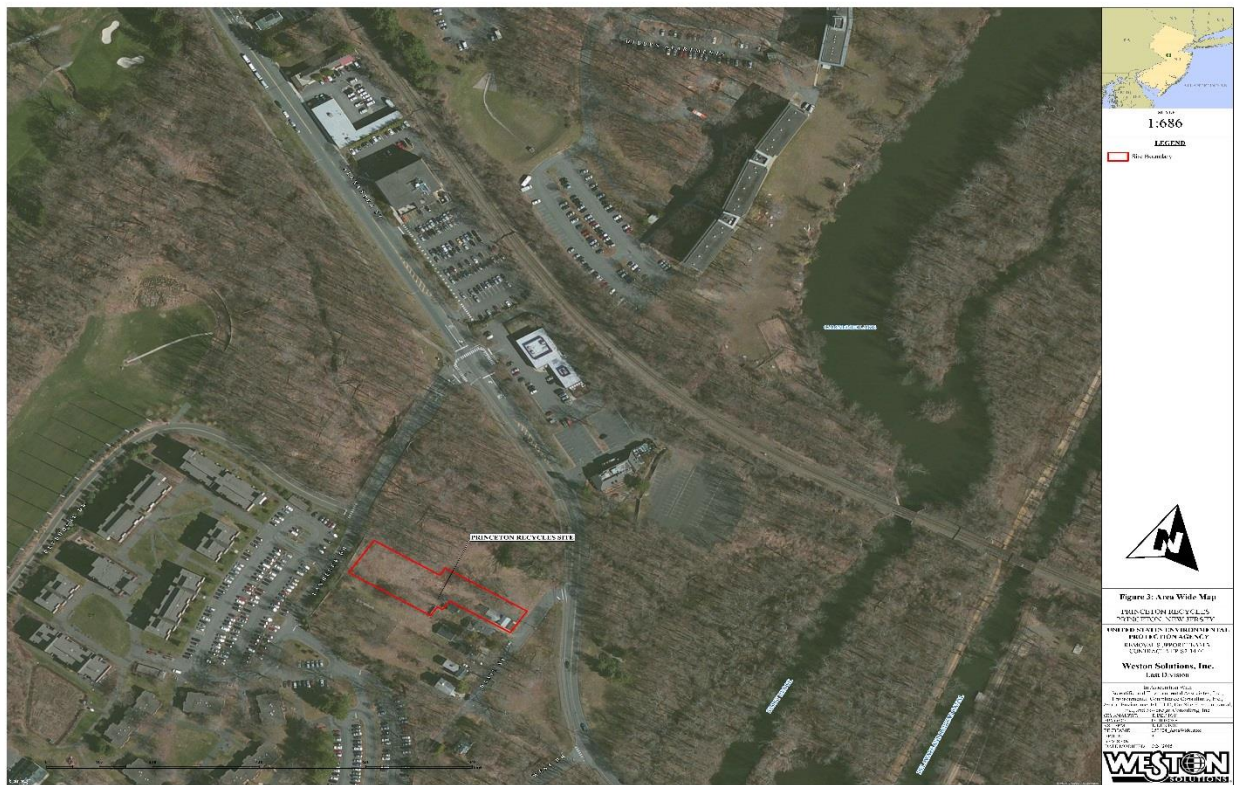
The U. S. Environmental Protection Agency (EPA) is performing a contaminated soil removal action at the Princeton Recycles Site on Basin Street in Princeton, New Jersey. The Site is a former paper and metal recycling business. The recycling business began operations in 1955 and ceased operations in 2003. Operations at the facility allegedly included draining oil from transformers that contained polychlorinated biphenyls (PCBs) and burning the insulation from the outside of electrical wire in order to recover the copper for recycling.

The New Jersey Department of Environmental Protection (NJDEP) previously collected samples to determine the nature and extent of soil contamination on Site. Elevated levels of PCBs, lead, dioxin, and a class of chemicals called Semi-Volatile Organic Compounds (SVOC) were found in the soil. As a result of that sampling, the NJDEP requested that EPA evaluate the Site for a potential clean-up action under the Comprehensive Environmental Response, Compensation and Liability Act (CERCLA), commonly known as Superfund.

EPA has evaluated the NJDEP data and has concluded that the Site is eligible for an EPA removal action under CERCLA.

NEXT STEPS

EPA will begin the excavation of approximately 10,000 tons of contaminated soil in September 2015. As soil is excavated, it will be stockpiled on site and sampled. Once characterized, the soil will be trucked to off-site facilities for appropriate disposal. The site will be backfilled with clean soil, re-graded and seeded. Work is expected to continue through the end of 2015 with final restoration occurring in the spring of 2016.



SITE PARTICULARS

The Site is located at 409 Basin Street in Princeton, New Jersey (Block 11503, Lots 2 & 8). Lot 2 is 0.27 acres in size and contains a dwelling; lot 8 is 0.37 acres in size and is undeveloped. The Site also includes adjacent residential parcels and a portion of a parcel owned by Princeton University; all of which have been impacted by the spread of contamination. The Site is in a residential neighborhood and is bordered by lands owned by Princeton University. Residences are located immediately to the south along Basin Street. A Princeton University apartment complex is located within 200 feet to the west of the Site. A tributary to Stoney Creek flows from west to east along the north boundary of the Site.

The Site is located at 40° 19' 59.44" (latitude) / -74° 39' 19.6" (longitude).