



UNITED STATES ENVIRONMENTAL PROTECTION AGENCY  
REGION IX  
75 Hawthorne Street  
San Francisco, CA 94105

Certified Mail:  
Return Receipt Requested

OCT 13 2015

Stephen E. Macadam, President  
Coltec Industries, Inc.  
5605 Carnegie Blvd. Suite 500  
Charlotte, North Carolina 28209-4674

Re: General Notice Letter – Former A & B Mining Co. Mines  
A & B Nos. 5, 7, 13; Earl Huskon Nos. 1 and 3; and Henry Sloan No. 1 Mines  
Little Colorado Mining District, Coconino County, Arizona

Dear Mr. Macadam:

The United States Environmental Protection Agency ("EPA") is spending public funds to investigate and control releases or potential releases of hazardous substances, pollutants or contaminants in the Cameron area, Coconino County, Navajo Nation. Under Sections 106(a) and 107(a) of the Comprehensive Environmental Response, Compensation and Liability Act ("CERCLA"), commonly known as Superfund, Potentially Responsible Parties ("PRPs") may be required to perform cleanup actions to protect the public health, welfare, or the environment. PRPs may also be responsible for all costs incurred by EPA in responding to any release or threatened release at the Sites, as defined below. PRPs include current and former owners and operators of facilities at which hazardous substances were disposed of, persons who arranged for the disposal of hazardous substances at a facility ("generators"), and persons who accepted hazardous substances for transport to a facility ("transporters").

EPA has evaluated information obtained through its investigation of the Sites, and has determined that Coltec Industries, Inc. (successor in interest to A & B Mining Corporation) is a PRP as a former mine operator at A & B Nos. 5, 7, 13; Earl Huskon Nos. 1 and 3; and Henry Sloan No. 1 mines (collectively "the Sites" as described below).

Site Background

The Sites are located in the Little Colorado Mining District in Coconino County, Arizona (see enclosed site map). The United States Atomic Energy Commission referred to this area as the Little Colorado Mining District. All mines are located on tribal trust land on the Navajo Indian Reservation. A & B No. 5, 7, 13; Earl Huskon Nos. 1 and 3; and Henry Sloan No. 1 mine were in operation in 1954. In addition, Earl Huskon No. 3 also operated in 1955.

### General Notice

After a series of name changes and mergers, EPA believes the business entity formally known as A & B Mining Corporation merged into Colt Industries Operating Corporation. Colt Industries Operating Corporation merged into Coltec Industries, Inc. on September 28, 1971. EPA believes Coltec Industries, Inc. is the successor in interest to A & B Mining Corporation. Coltec Industries, Inc. is potentially liable as a former operator of the following Sites:

1. A & B No. 5, 7, and 13; Earl Huskon Nos. 1 and 3; and Henry Sloan No. 1 mines in 1954
2. Earl Huskon No. 3 mine in 1955.

### Administrative Record

Pursuant to Section 113(k) of CERCLA, EPA must establish an administrative record file that contains documents that form the basis of EPA's decisions on the selection of response actions for the Sites. The administrative record file, which contains the documents related to the response actions that are ultimately selected for the Sites, will be created and made available to the public for inspection and comment once the Agency has completed sampling and characterization of the Sites, completed a study of various cleanup options, and has drafted a document selecting proposed response actions.

At the time of its creation, the administrative record file(s) for the Sites will be made available for inspection at EPA's Regional Office in San Francisco, located at 75 Hawthorne Street, 9<sup>th</sup> floor.

### Change in Financial Status:

On a related subject, now that Coltec Industries, Inc. has been provided with this General Notice Letter, in addition to a previous General Notice Letter regarding the A&B Nos. 2 and 3 mines, please note that EPA has a potential claim against Coltec Industries, Inc. If your financial status changes in any significant way, i.e., filing for bankruptcy, you must include EPA as a creditor.

### Requested Action:

If you are already involved in discussion with State or local authorities, are engaged in voluntary clean-up action, or are involved in a lawsuit regarding the Sites, you should continue such activities as appropriate. This letter is not intended to advise you or to direct you to restrict or to discontinue any such activities; however, you are advised to report the status of those discussions or actions in your response to this letter, and to provide a copy of your response to any other parties involved in those discussions or actions.

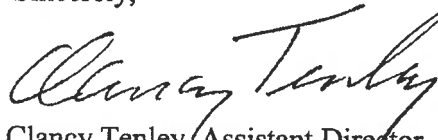
Your response should be made in writing and submitted to EPA within thirty (30) days of receipt of this letter. Your response should be directed to:

Zizi Searles (SFD-6-2)  
U.S. Environmental Protection Agency, Region IX  
75 Hawthorne Street  
San Francisco, CA 94105

Please direct any technical questions with respect to the Sites to the Remedial Project Manager ("RPM") Zizi Searles at (415) 972-3178, or you may email her at [searles.zizi@epa.gov](mailto:searles.zizi@epa.gov). Please direct any legal questions to Steve Keller at (202) 514-5465 or you may email him at [Steve.Keller@usdoj.gov](mailto:Steve.Keller@usdoj.gov).

Thank you for your attention to this matter.

Sincerely,



Clancy Tenley, Assistant Director  
Partnerships, Land Revitalization & Cleanup Branch  
Superfund Division

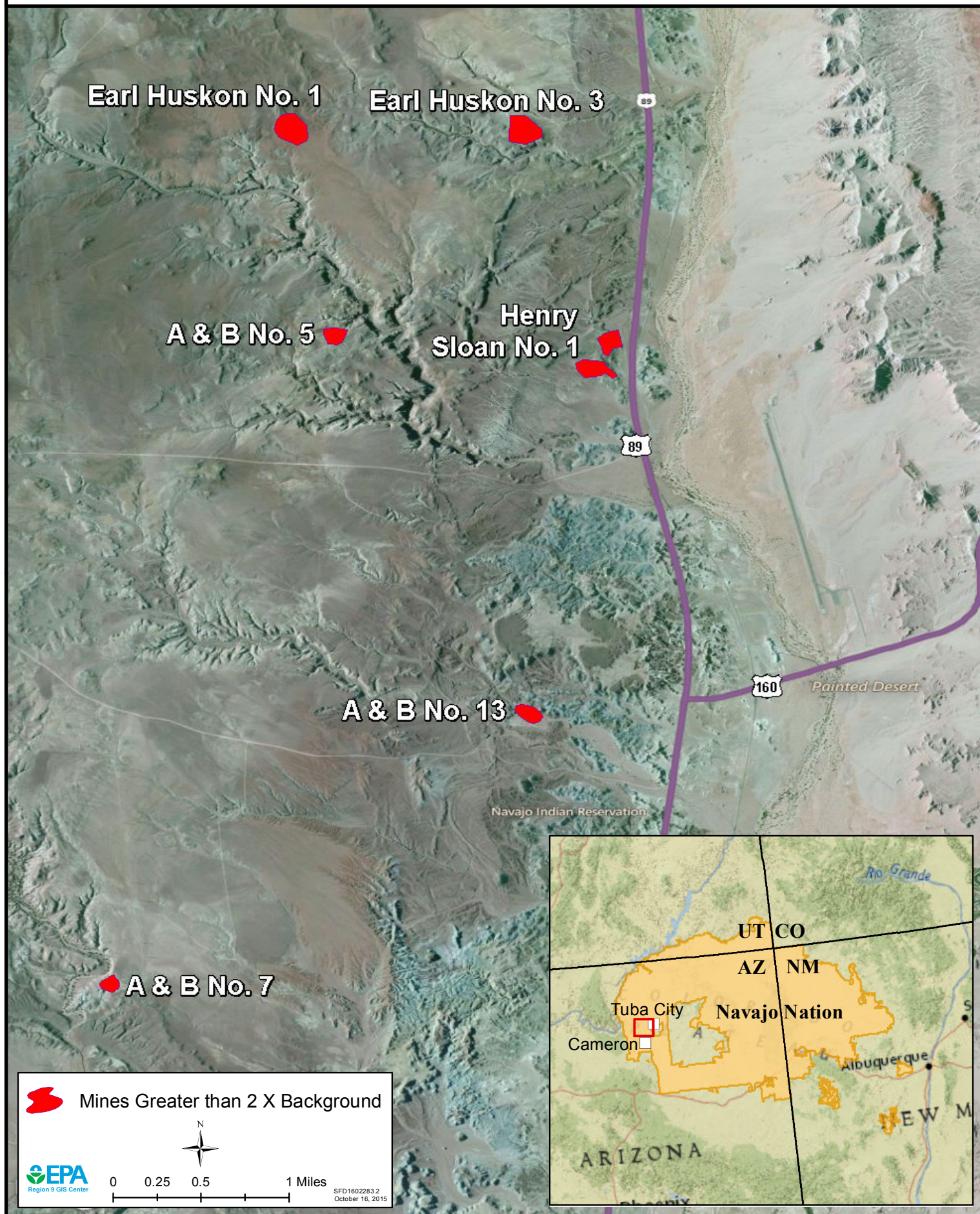
cc: Dave Taylor, Navajo Nation Department of Justice,  
Joe Wheatley, Director of Risk Management and EHS, Enpro, Inc.

Enclosures:

1. Atomic Energy Commission Ore Production Reports
2. Map of Coltec Sites named in this GN



# Coltec Industries AUMs (2nd General Notice Letter)





03/23/79

PAGE 3

G R E P R O D U C T I O N R E P O R T  
BY CONTROLLER AND PROPERTY IN STATE AND COUNTY  
FOR CALENDAR YEAR 1954

STATE	COUNTY	CONTROLLER	PROPERTY	TONS DRF	POUNDS U308	%U308	POUNDS V205	%V205	TONS U308
ARIZONA			TOTAL	3,565.46	17,760.95	.25	98,666.02	1.38	8.88
		SIMPSON GEORGE P							
		✓ PLOT 1 + 2		519.74	2,542.57	.24	19,672.00	1.89	1.27
		✓ SIMPSON 1		31.94	112.32	.18	540.19	.85	.05
		TOTAL		551.68	2,654.89	.24	20,212.19	1.83	1.32
		SPENCER URANIUM							
		✓ JOHN M YAZZIE 1		198.98	1,459.85	.37	2,108.88	.53	.72
		TOTAL		198.98	1,459.85	.37	2,108.88	.53	.72
		V C A							
		✓ COVE MESA		959.06	4,296.12	.22	35,565.00	1.86	2.14
		✓ MONUMENT 2 IND 620		96,741.21	785,967.65	.40	2,429,901.00	1.23	392.98
		✓ PLOT 4		22.47	82.33	.18	739.00	1.64	.04
		✓ RATTLESNAKE		559.63	2,484.00	.22	17,966.00	1.61	1.24
		TOTAL		100,278.37	792,830.10	.40	2,484,171.00	1.24	396.41
		APACHE COUNTY TOTAL		156,846.05	1,104,991.46	.35	3,854,863.73	1.23	552.49
		COCONINO							
		A + B MINING CO							
		A + B 2		121.90	679.70	.28	318.74	.13	.33
		A + B 3		421.23	678.17	.10	370.26	.04	.43
		A + B 5		364.66	788.40	.13	243.74	.04	.39
		A + B 7		24.49	39.18	.08	132.22	.27	.01
		A + B 13		50.82	91.48	.09	91.48	.09	.04
		EARL HUSKON 1		166.21	604.85	.16	977.84	.26	.30
		EARL HUSKON 3		1,357.79	6,827.26	.25	900.41	.03	3.41
		SLOAN 1		312.75	1,160.40	.19	258.52	.04	.58
		TOTAL		2,779.87	11,069.44	.20	3,293.21	.06	5.53
		ALPINE URANIUM C							
		BIG BLUE		37.92	211.62	.28			.10
		RAINBOW		8.96	16.13	.09	55.57	.31	
		TOTAL		46.88	227.75	.24	55.57	.31	.11
		ARROWHEAD URAN C							
		HUSKON 1		1,319.68	5,841.88	.22	2,861.85	.11	2.92
		HUSKON 2		913.03	4,291.82	.24	669.41	.04	2.14
		HUSKON 3		2,454.53	13,588.24	.27	1,427.01	.03	6.79
		HUSKON 4		1,032.09	3,081.34	.15	717.99	.03	1.50

04/10/79

PAGE 6

ORE PRODUCTION REPORT  
BY CONTROLLER AND PROPERTY IN STATE AND COUNTY  
FOR CALENDAR YEAR 1955

STATE	COUNTY	CONTROLLER	PROPERTY	TONS ORE	POUNDS U308	21306	POUNDS V205	XV205	TONS U308
ARIZONA			A + B MINING CO						
			A + B 3	164.74	577.70	.18	144.69	.04	.28
			EARL HUSKON 3	477.57	1,999.02	.21	293.13	.03	.99
			TOTAL	642.31	2,578.72	.20	442.82	.03	1.28
			ARROWHEAD URAN C						
			HUSKON 1	197.07	1,245.52	.32	640.76	.16	.62
			HUSKON 2	366.65	2,092.30	.28	291.90	.04	1.04
			HUSKON 17	19.29	61.03	.21	19.29	.05	.04
			TOTAL	582.91	3,418.85	.29	951.95	.08	1.70
			BONHAM G C						
			SUN VALLEY MINE	19.02	98.08	.26			.04
			TOTAL	19.02	98.08	.26			.04
			DIAMOND URAN CO						
			LEMOEL LITTLEMAN 3	11.68	54.63	.23	16.63	.07	.02
			TOTAL	11.68	54.63	.23	16.63	.07	.02
			FIVE STAR MINING						
			AMOS CHEE 3	17.54	31.57	.09	101.71	.29	.01
			AMOS CHEE 8	58.00	220.41	.19	42.78	.04	.11
			TOTAL	75.54	251.98	.17	144.49	.10	.12
			GRAND CANYON URA						
			SUN VALLEY MINE	9.63	46.24	.24			.02
			TOTAL	9.63	46.24	.24			.02
			KACHINA URAN CO						
			MONTESUMA 2	2.66	21.50	.19	5.79	.06	.01
			TOTAL	2.66	21.50	.19	5.79	.06	.01
			MARBLE CANYON UP						
			FEDWING	22.53	155.29	.34			.07
			TOTAL	22.53	155.29	.34			.07
			SHOOTING STAR UP						
			LIBA GROUP	229.21	985.75	.06	170.64	.04	.19
			TOTAL	229.21	985.75	.08	170.64	.04	.19
			UNIVERSAL URAN +						
			VERMILLION	9.32	16.82	.09	2.42	.09	
			TOTAL	9.32	16.82	.09	2.42	.09	