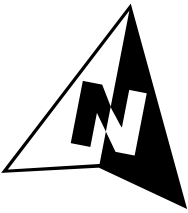


SCALE

1:244

LEGEND

 Compromised Sections of Roof



Notes:  
1.) Aerial image taken with Drone technology.  
2.) Compromised roof sections superimposed over second floor.

Figure 7:  
Compromised Roof Map

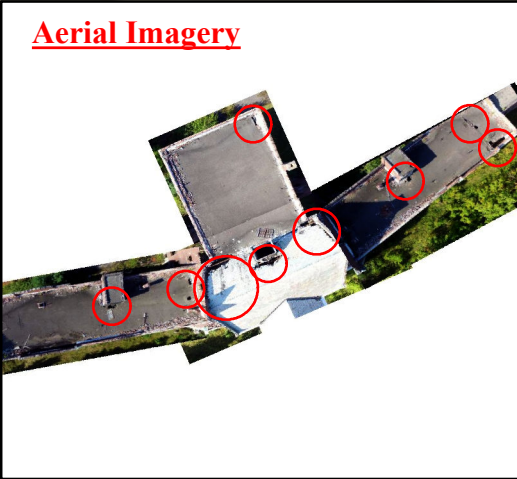
Old Saratoga Hospital Site  
Providence Township, New York

UNITED STATES ENVIRONMENTAL  
PROTECTION AGENCY  
REMOVAL SUPPORT TEAM 3  
CONTRACT # EP-S2-14-01

Weston Solutions, Inc.

In Association With Scientific and  
Environmental Associates, Inc.;  
Environmental Compliance Consultants, Inc.;  
Avatar Environmental, LLC; On-Site Environmental,  
Inc.; and Sovereign Consulting, Inc

GIS ANALYST:	T. BENTON
EPA OSC:	K. LUCARINO
RST 3 SPM:	K. GUERRERO
FILENAME:	151009_CompromisedRoof.mxd
FIGURE	6
REVISION	0
DATE MODIFIED	10/09/2015



Aerial Imagery