



Photo No. IMG_3094; Taken on 10/01/15 at 12:14 hours by START-JW. Facing Down. TechLaw collecting sample WG-SW-0012/dup WG-SW-0016



Photo No. IMG_3095; Taken on 10/01/15 at 12:14 hours by START-JW. Facing Down. TechLaw collecting sample WG-SW-0012/dup WG-SW-0016



Photo No. IMG_3096; Taken on 10/01/15 at 12:15 hours by START-JW. Facing Down. Water quality measurements at sample collection location WG-SW-001, sample number WG-SW-0012/dup WG-SW-0016



Photo No. IMG_0418; Taken on 10/01/15 at 12:10 hours by START-MG. Facing Down. WG-SS-0001 location



Photo No. IMG_0419; Taken on 10/01/15 at 12:45 hours by START-MG. Facing Down. WG-SS-0002 location



Photo No. IMG_0420; Taken on 10/01/15 at 13:15 hours by START-MG. Facing Down. WG-SS-0003 & WG-SS-0004 location



Photo No. IMG_0421; Taken on 10/01/15 at 14:35 hours by START-MG. Facing Down. WG-SS-0005 & WG-SS-0006 location



Photo No. IMG_3097; Taken on 10/01/15 at 13:48 hours by START-JW. Facing Down. TechLaw collecting sample WG-PW-004.



Photo No. IMG_3098; Taken on 10/01/15 at 13:48 hours by START-JW. Facing Down. Location photo of sample WG-PW-005. The sample was collected at a new location on an outfall of land in the creek.



Photo No. IMG_0422; Taken on 10/01/15 at 14:20 hours by START-MG. Facing Down. WG-SS-0007 location



Photo No. IMG_0423; Taken on 10/01/15 at 14:50 hours by START-MG. Facing Down. WG-SS-0008 location



Photo No. IMG_3099; Taken on 10/01/15 at 14:58 hours by START-JW. Facing Down. TechLaw collecting sample WG-PW-006

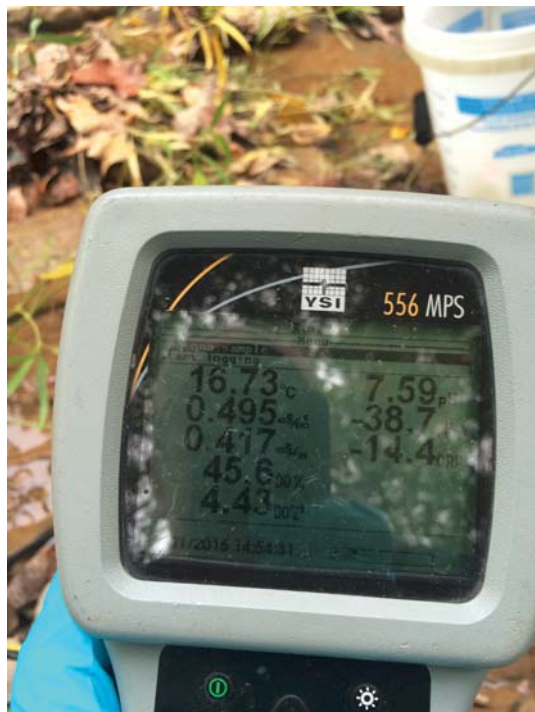


Photo No. IMG_0424; Taken on 10/01/15 at 14:59 hours by START-MG. Facing Down. Water Quality Readings at WG-PW-006.



Photo No. IMG_3100; Taken on 10/01/15 at 15:37 hours by START-JW. Facing Down. pH paper while field preserving the samples. One piece of paper was from unpreserved sample water (left) the other is after preservation (right) to test a new formulation of preservation from the lab. This was not used as a sample during this sampling event.

Page 2 of 2
USEPA CLP Generic COC (LAB COPY)

Page 1 of 2
USEPA CLP Generic COC (LAB COPY)
Date Shipped: 10/1/2015
Custodian: Paulie
Analysis: 77453254021

CHAIN OF CUSTODY RECORD
No: 3-100115-163402-0006
Lab: ALS Laboratory Group - Rochester
Lab Contact: Janice Jenger
Lab Phone: 585-288-5380

Project Code: R34714
Cooler #: 001

Sample Identifier	CLP Sample No.	Matrix/Sampler	Coll. Method	Analysis/Turnaround (Days)	Tag/Preservative/Bottles	Location	Collection Date/Time	For Lab Use Only
WG-SW-0012	R3471401	Surface Water/ Bill Huggins	Grab	C-6(21)	001 (NH4OH)(NH4)2SO4 pH 8 (1)	WG-SW-001	10/01/2015 12:15	
WG-SW-0013	R3471403	Surface Water/ Bill Huggins	Grab	C-6(21)	002 (NH4OH)(NH4)2SO4 pH 8 (1)	WG-SW-002	10/01/2015 12:30	
WG-PW-0004	R3471405	Pore Water/ Bill Huggins	Grab	C-6(21)	005 (NH4OH)(NH4)2SO4 pH 8 (1)	WG-SW-002	10/01/2015 13:00	
WG-PW-0005	R3471407	Pore Water/ Bill Huggins	Grab	C-6(21)	007 (NH4OH)(NH4)2SO4 pH 8 (1)	MC1	10/01/2015 13:51	
WG-SW-0014	R3471409	Surface Water/ Bill Huggins	Grab	C-6(21)	009 (NH4OH)(NH4)2SO4 pH 8 (1)	WG-SW-003	10/01/2015 14:25	
WG-SW-0015	R3471411	Surface Water/ Bill Huggins	Grab	C-6(21)	011 (NH4OH)(NH4)2SO4 pH 8 (1)	WG-SW-003	10/01/2015 14:25	
WG-SW-0016	R3471413	Surface Water/ Bill Huggins	Grab	C-6(21)	013 (NH4OH)(NH4)2SO4 pH 8 (1)	WG-SW-004	10/01/2015 14:35	
WG-PW-0006	R3471415	Pore Water/ Bill Huggins	Grab	C-6(21)	015 (NH4OH)(NH4)2SO4 pH 8 (1)	WG-SW-004	10/01/2015 15:05	
WG-RB-0002	R3471417	Water/ Bill Huggins	Grab	C-6(21)	017 (NH4OH)(NH4)2SO4 pH 8 (1)	Z	10/01/2015 15:49	
WG-FB-0003	R3471419	Water/ Bill Huggins	Grab	C-6(21)	019 (NH4OH)(NH4)2SO4 pH 8 (1)	Z	10/01/2015 15:53	

Shipment for Case Complete? Y
Samples Transferred From Chain of Custody #

Sample(s) to be used for Lab OC: WG-PW-0004 Tag 005, WG-SW-0014 Tag 011, WG-SW-0015 Tag 013
Sampler: Paulie
Analysis: 77453254021

Requisitioned by (Signature and Organization)	Date/Time	Received by (Signature and Organization)	Date/Time	Sample Condition Upon Receipt
Paulie	10/1/15 1800	Janice Jenger	10/1/15 1800	

Photo No. IMG_3101; Taken on 10/01/15 at 17:31 hours by START-JW. Facing Down. Chain of Custody 1

Page 2 of 2
USEPA CLP Generic COC (LAB COPY)
Date Shipped: 10/1/2015
Custodian: Paulie
Analysis: 77453254021

CHAIN OF CUSTODY RECORD
Project Code: R34714
Cooler #: 001

No: 3-100115-163402-0006
Lab: ALS Laboratory Group - Rochester
Lab Contact: Janice Jenger
Lab Phone: 585-288-5380

Sample Identifier	CLP Sample No.	Matrix/Sampler	Coll. Method	Analysis/Turnaround (Days)	Tag/Preservative/Bottles	Location	Collection Date/Time	For Lab Use Only
WG-SW-0018	R3471421	Surface Water/ Bill Huggins	Grab	C-6(21)	021 (NH4OH)(NH4)2SO4 pH 8 (1)	WG-SW-001	10/01/2015 15:00	
WG-SW-0001	R3471423	Soil Matt Gels	Composite	C-8 Soil(21)	023 (A C) (1)	WG-SW-001	10/01/2015 12:10	
WG-SW-0002	R3471425	Soil Matt Gels	Composite	C-8 Soil(21)	025 (A C) (1)	WG-SW-002	10/01/2015 12:45	
WG-SW-0003	R3471427	Soil Matt Gels	Composite	C-8 Soil(21)	027 (A C) (1)	WG-SW-003	10/01/2015 13:15	
WG-SW-0004	R3471429	Soil Matt Gels	Composite	C-8 Soil(21)	029 (A C) (1)	WG-SW-004	10/01/2015 13:35	
WG-SW-0005	R3471431	Soil Matt Gels	Composite	C-8 Soil(21)	031 (A C) (1)	WG-SW-004	10/01/2015 14:05	
WG-SW-0006	R3471433	Soil Matt Gels	Composite	C-8 Soil(21)	033 (A C) (1)	WG-SW-004	10/01/2015 14:35	
WG-SW-0007	R3471435	Soil Matt Gels	Composite	C-8 Soil(21)	035 (A C) (1)	WG-SW-004	10/01/2015 14:50	
WG-SW-0008	R3471437	Soil Matt Gels	Composite	C-8 Soil(21)	037 (A C) (1)	WG-SW-004	10/01/2015 15:50	

Shipment for Case Complete? Y
Samples Transferred From Chain of Custody #

Sample(s) to be used for Lab OC: WG-SW-0001 Tag 003
Sampler: Paulie
Analysis: 77453254021

Requisitioned by (Signature and Organization)	Date/Time	Received by (Signature and Organization)	Date/Time	Sample Condition Upon Receipt
Paulie	10/1/15 1800	Janice Jenger	10/1/15 1800	

Photo No. IMG_3102; Taken on 10/01/15 at 17:31 hours by START-JW. Facing Down. Chain of Custody 2