

FILE: T:\GIS Projects\Working Drafts\2015 Historical Society\Fig08 1 Sampling Locations DRAFT\20150731.mxd 1:43:03 PM 7/31/2015 Brownk

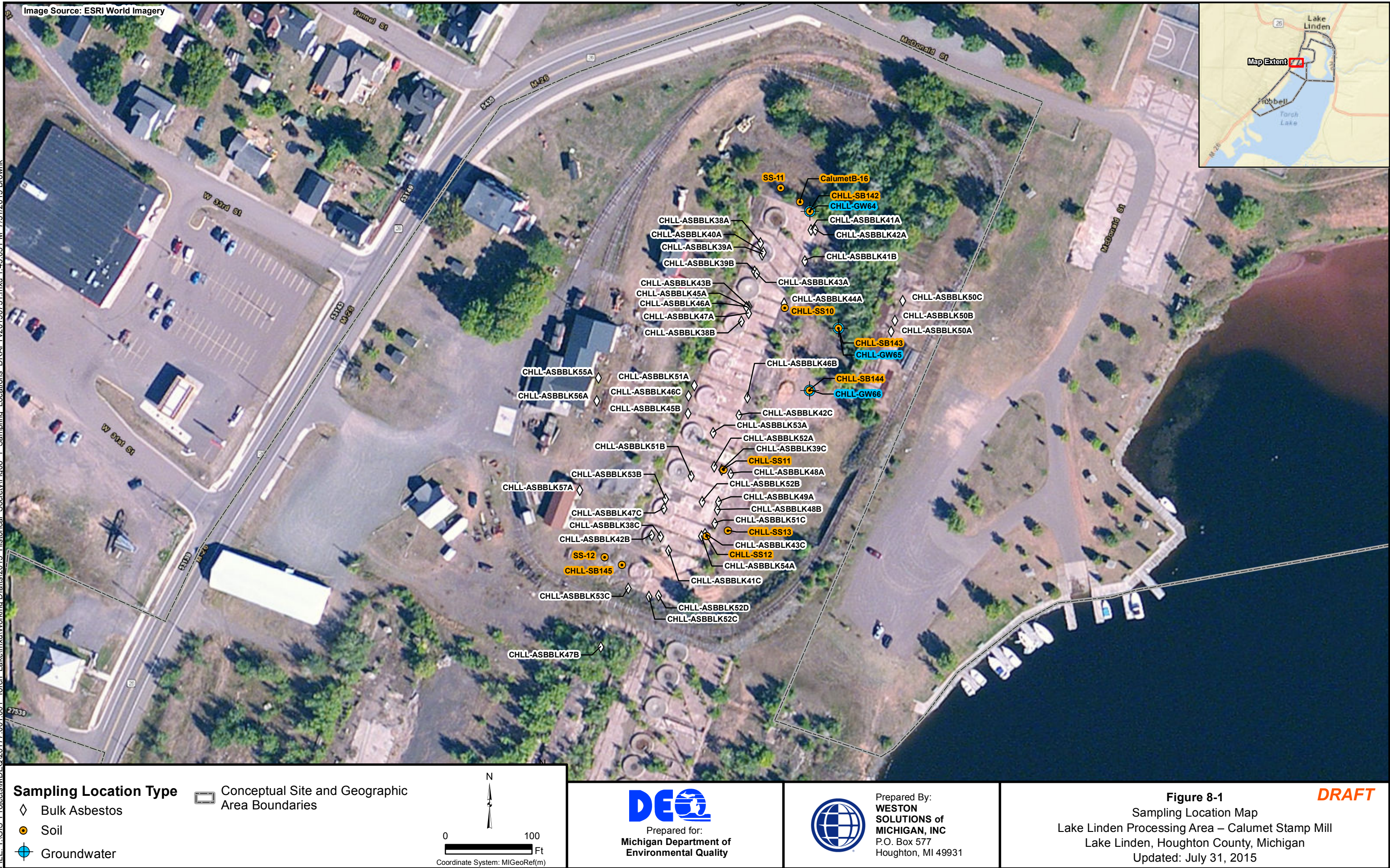


Image Source: ESRI World Imagery

FILE: T:\GIS Projects\MD\EQ\2017\001.001 Torch Lake\mxd\Working Drafts\2015 Historical Society\Fig08 3 Soil Results DRAFT\20150731.mxd 2:46:20 PM 7/31/2015 Brownk

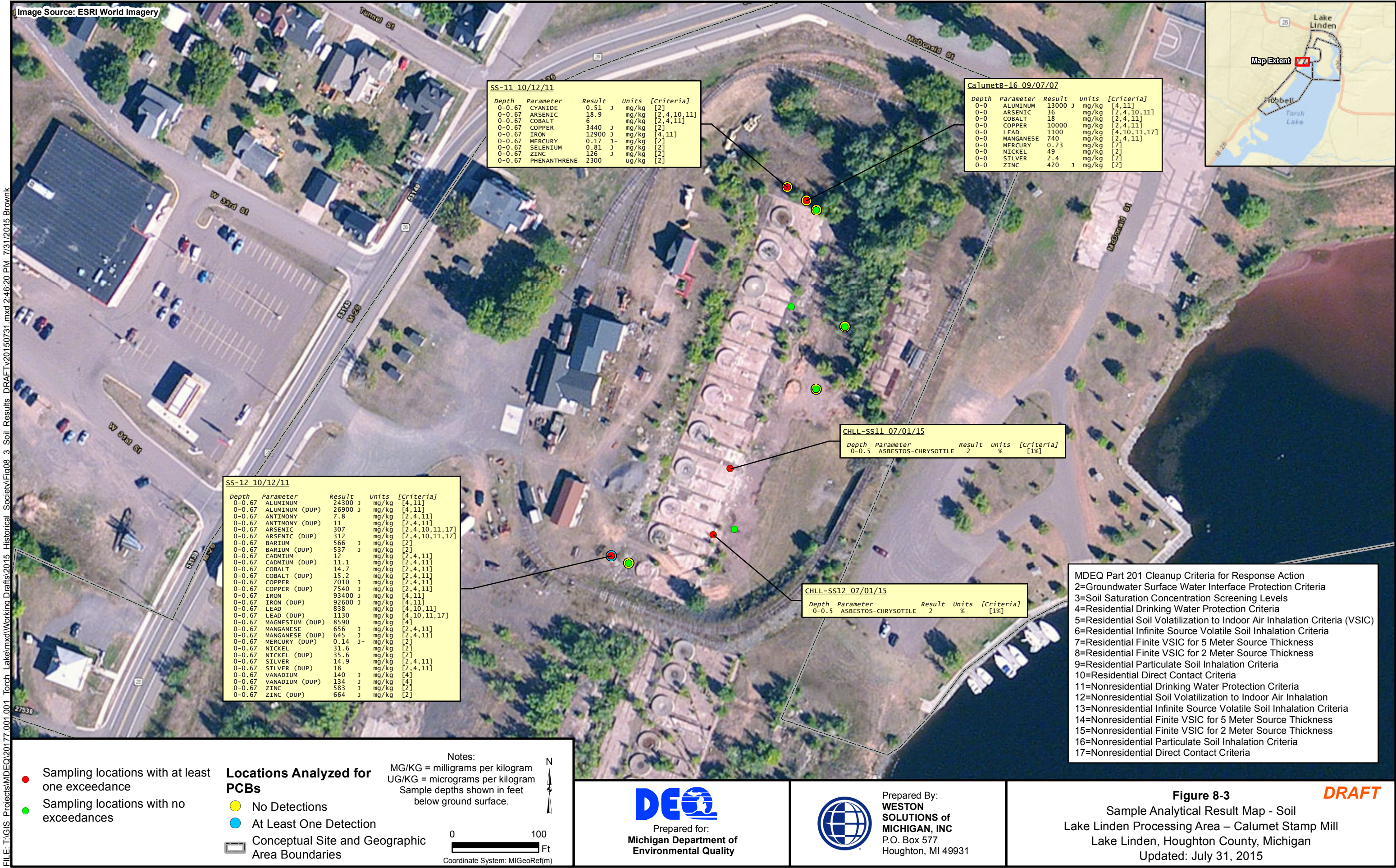


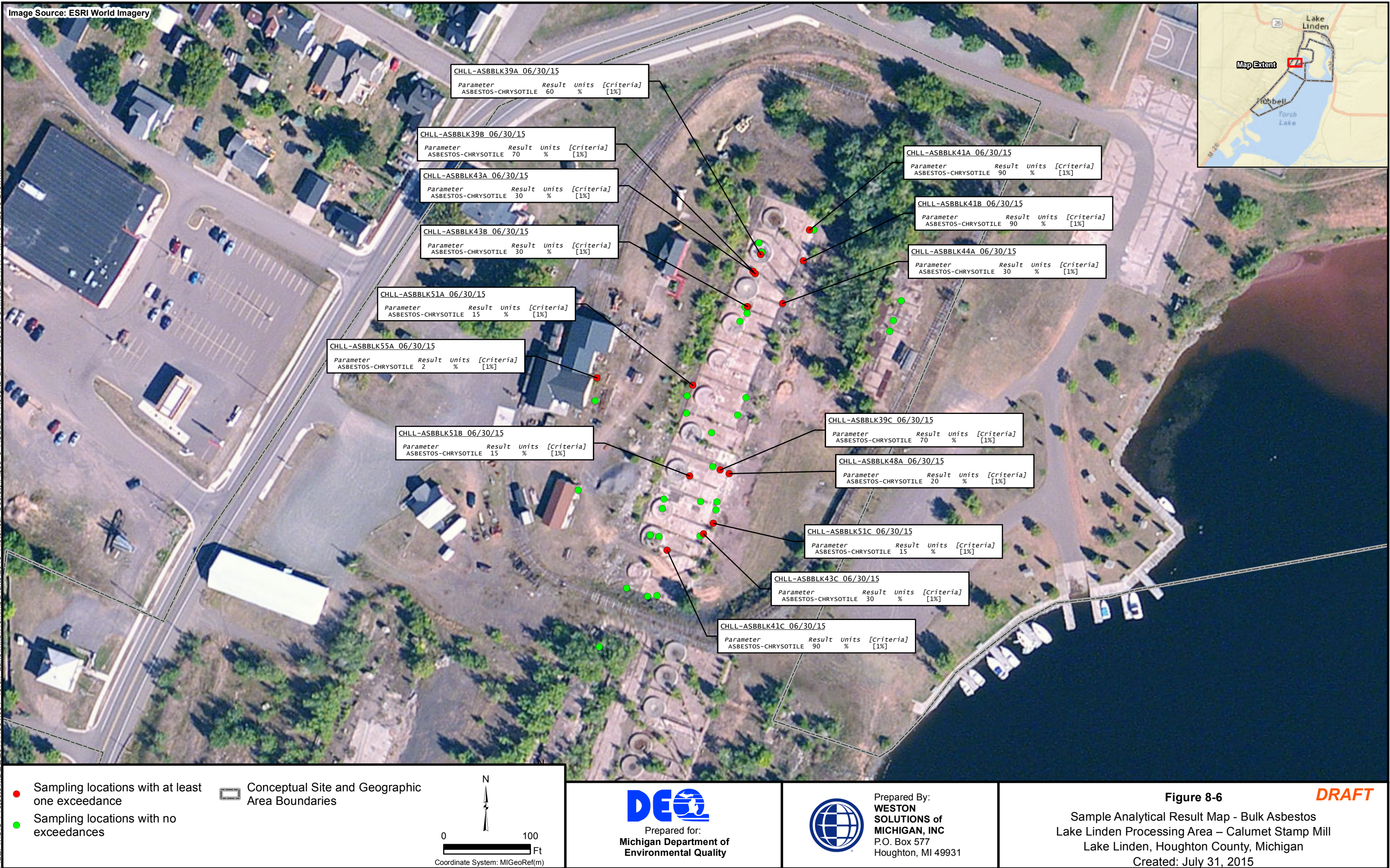
Image Source: ESRI World Imagery

FILE: T:\GIS Projects\Working Drafts\2015 Historical Society\Fig08 4 GW Results DRAFT\20150731.mxd 4 GW Results DRAFT\20150731.mxd 7/31/2015 Brownk



FILE: T:\GIS Projects\MD\EQ\2017\001\001 Torch Lake.mxd\Working Drafts\2015 Historical Society\Fig08 6 ASBBLK Results DRAFT\20150731.mxd 2:11:47 PM 7/31/2015 Brownk

Image Source: ESRI World Imagery



**DEQ**  
Prepared for:  
**Michigan Department of  
Environmental Quality**

Prepared By:  
**WESTON  
SOLUTIONS of  
MICHIGAN, INC**  
P.O. Box 577  
Houghton, MI 49931

**Figure 8-6**  
Sample Analytical Result Map - Bulk Asbestos  
Lake Linden Processing Area – Calumet Stamp Mill  
Lake Linden, Houghton County, Michigan  
Created: July 31, 2015

**DRAFT**