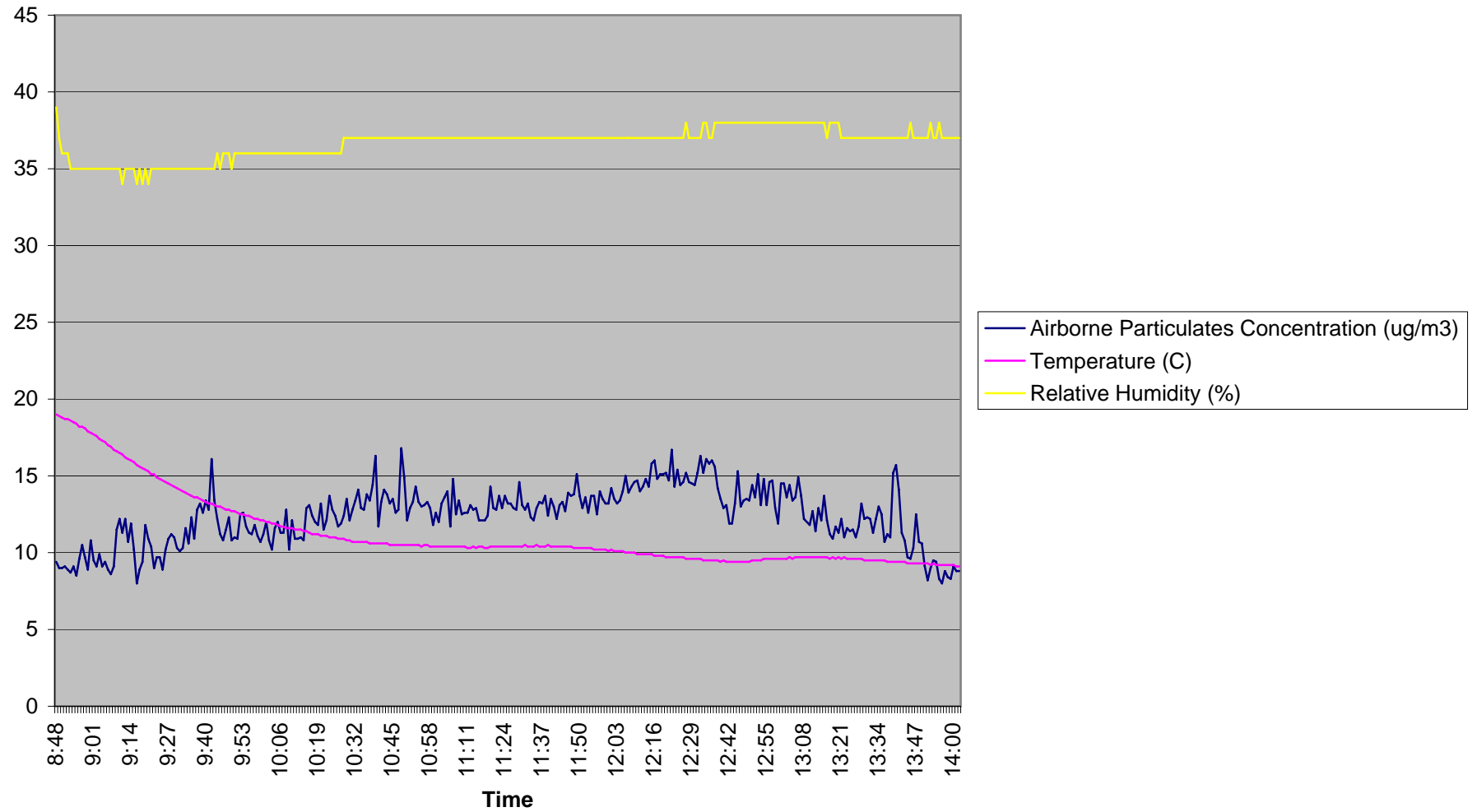


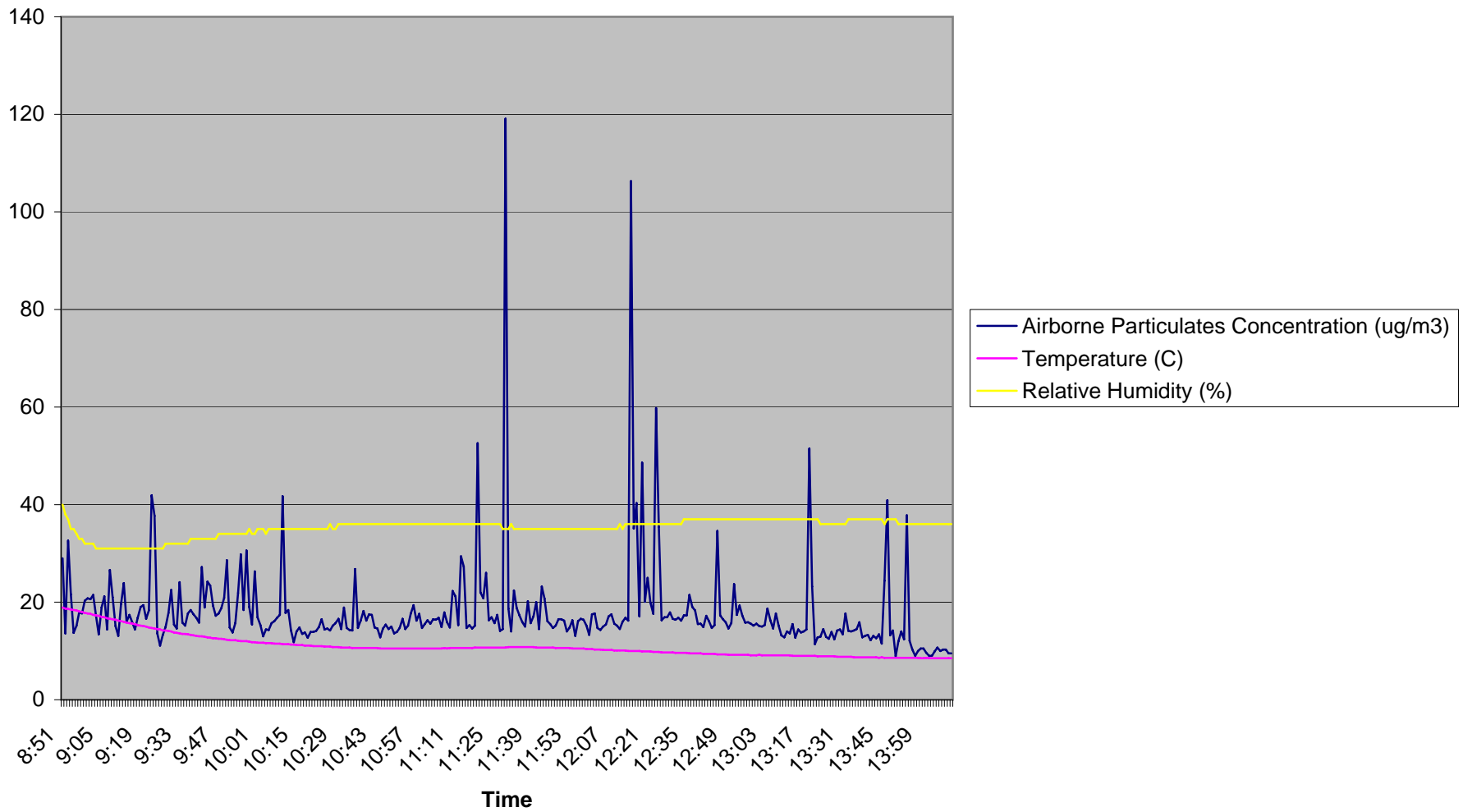
Upwind (UW-1) Location

December 2, 2005



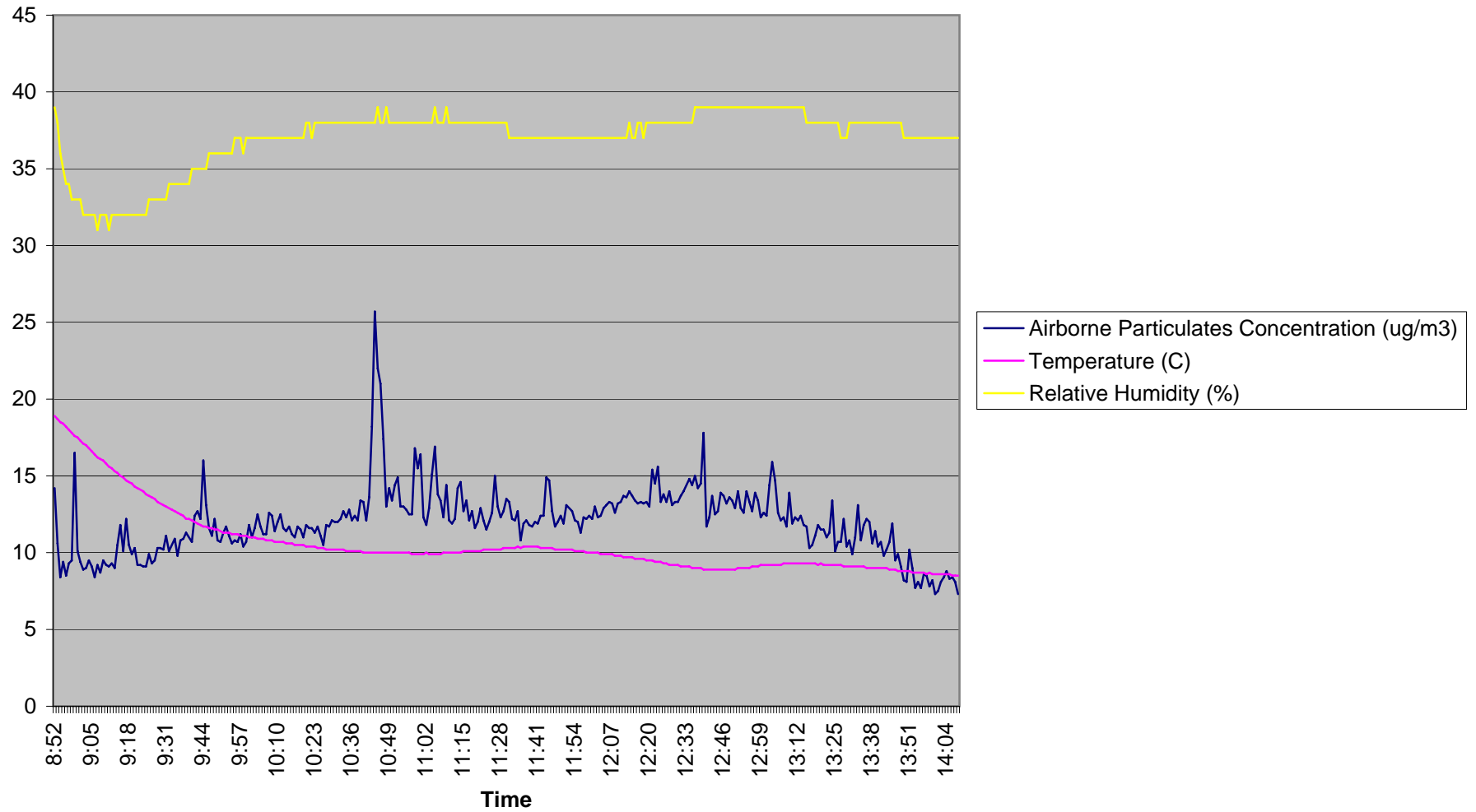
Downwind 1 (DW-1) Location

December 2, 2005



Downwind 2 (DW-2) Location

December 2, 2005





Legend

North Arrow

Scale: 0 10 20 FEET

DW-1 - Air Sampling Location

Rocky Area

Wooded Area

Fenceline

Figure 1 AIR SAMPLING STATION LOCATIONS DECEMBER 2, 2005	
PORT REFINERY SITE VILLAGE OF RYE BROOK, NEW YORK	
US ENVIRONMENTAL PROTECTION AGENCY REMOVAL SUPPORT TEAM CONTRACT # 68-W-00-113	
DRAWN BY:	W. HENSBERGER
EPA OSC:	J. HARMON
RST SPM:	S. CANNON
FILENAME: AirSamplingStations	

Weston Solutions, Inc.
Federal Programs Division
Region II Removal Support Team

IN ASSOCIATION WITH
INNOVATIVE TECHNOLOGICAL SOLUTIONS, INC.,
SCIENTIFIC AND ENVIRONMENTAL ASSOCIATES, INC.,
AND TERRANEAR TECHNOLOGIES GROUP

DATE MODIFIED: 12-5-05