

Situation Report (SITREP) No. 7 – Tuesday 02 February 2016 for period 02/01/16 1200hrs to 02/02/16 1200hrs

Wolf Coal Road Derailment – Jackson, Breathitt County, KY OVB 216 (north) and OVB 217 (south) KYDEP #2016-0436

Weather (Jackson, KY) at time of SITREP preparation

- 61°F, Mostly cloudy with rain possible towards late evening, Wind S @ 3 mph, Forecasted High 66°F, Low tonight 56°F with 35% chance precipitation. Dry last night.

Regulatory Oversight

None during operational period

CSXT

Joe McCann	CSXT-HAZMAT	317-694-2142	joseph_mccann@csx.com
Rob James	CSXT-HAZMAT	843-693-8146	robert_james@csx.com

Environmental Consultants / Environmental Contractors (On-Site Managers)

- AMEC Foster Wheeler (AFW) – **Ben Iden (859) 640-8149 & Tom Hensel (865) 604-5561 Total Staff: 6**
- Marion Environmental, Inc. (MEI)- **Scott Wilson 423-582-1797 Total Staff: 15 day**
- EnviroScience (ES) – **Dave Czayka (330) 606-5822 & Max Koran (330) 606-4412 Total Staff: 3 day**
- HEPACO – **Todd Robinson (423) 421-8535 Total Staff: 7 day**
- RJ Corman: **Greg Esthers (859) 321-5994 Total Staff: 4 day**
- EnviroProbe – **Rod Moore (304) 552-3259 & Ford Rose (304) 410-5817 Total Staff: 3**

Site Work Completed Monday 02/01/16 1200hrs to Tuesday 02/02/16 1200hrs

- Continued and maintenance of containment booms in the North Fork Kentucky River.
- Continued shoreline removal of debris and replacement of spent sorbents.
- Continued monitoring of absorbent at/near the Jackson water treatment plant intake.
- Continued surface water monitoring and sampling.
- Graded derailment area
- Seeded disturbed area and placed Jute mat.
- Applied Biomatrix over deep excavation area.
- Monitored and removed free product from sump.
- Continued silt fence maintenance and reinforcement around disturbed soil areas.
- Continued subsurface investigation via Geoprobe.

- Continued to prepare and submit daily SITREPs and IAPs to KYDEP and USEPA.



SITE LOCATION MAP
 CSX Emergency Response
 Breathitt County, KY



FIGURE 1

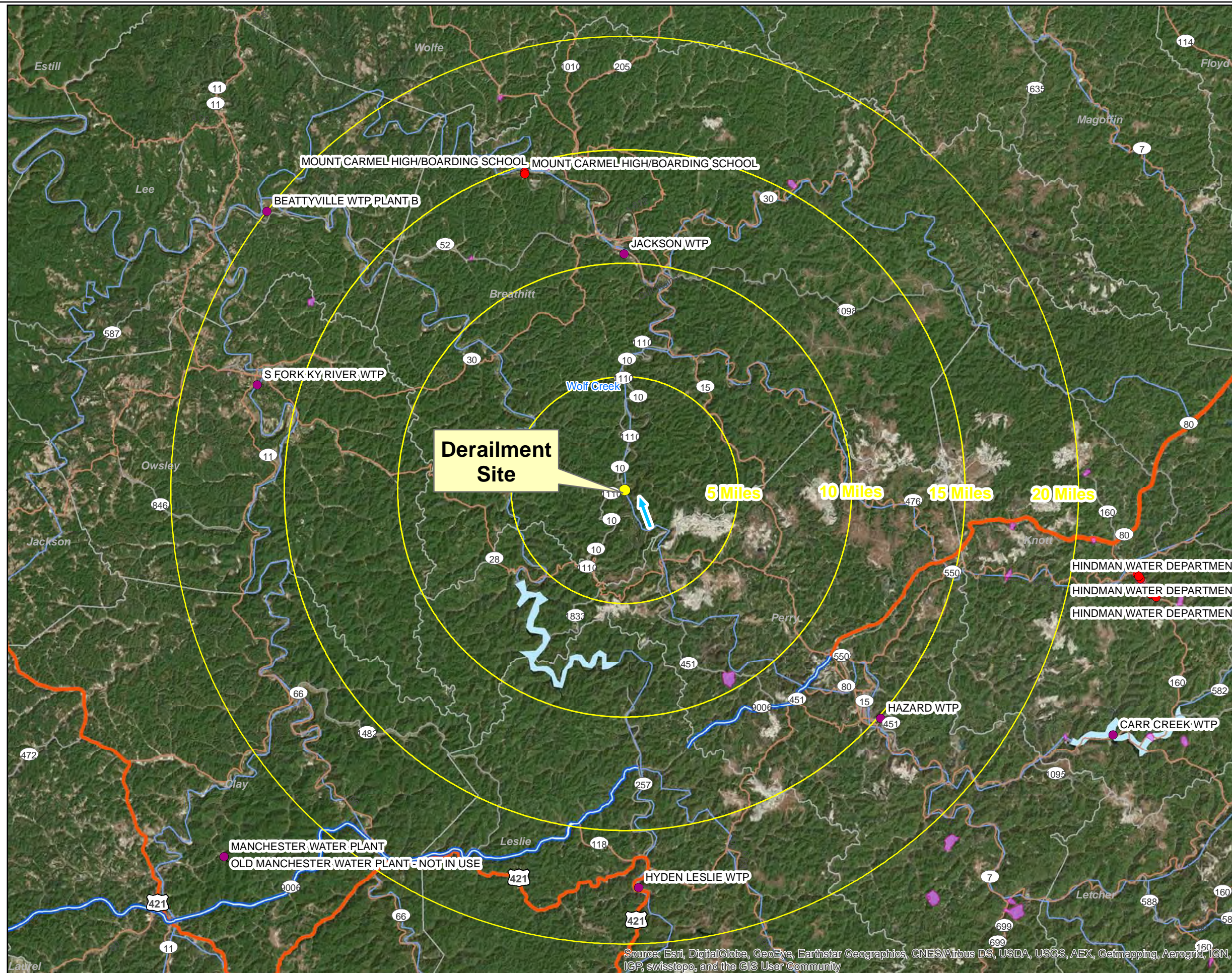
Legend

- Wells
- USGS Station
- Railroads
- Rivers
- Riverine (NWI)

0 650
 Feet

amec foster wheeler
 Amec Foster Wheeler
 Environment & Infrastructure, Inc.
 271 Mill Road
 Chelmsford, MA
 (978) 692-9090

Source: Esri, DigitalGlobe, GeoEye, Earthstar Geographics, CNES/Airbus DS, USDA, USGS, AEX, Getmapping, Aerogrid, IGN, IGP, swisstopo, and the GIS User Community



RECEPTORS MAP
 CSX Emergency Response
 Breathitt County, KY



FIGURE 2

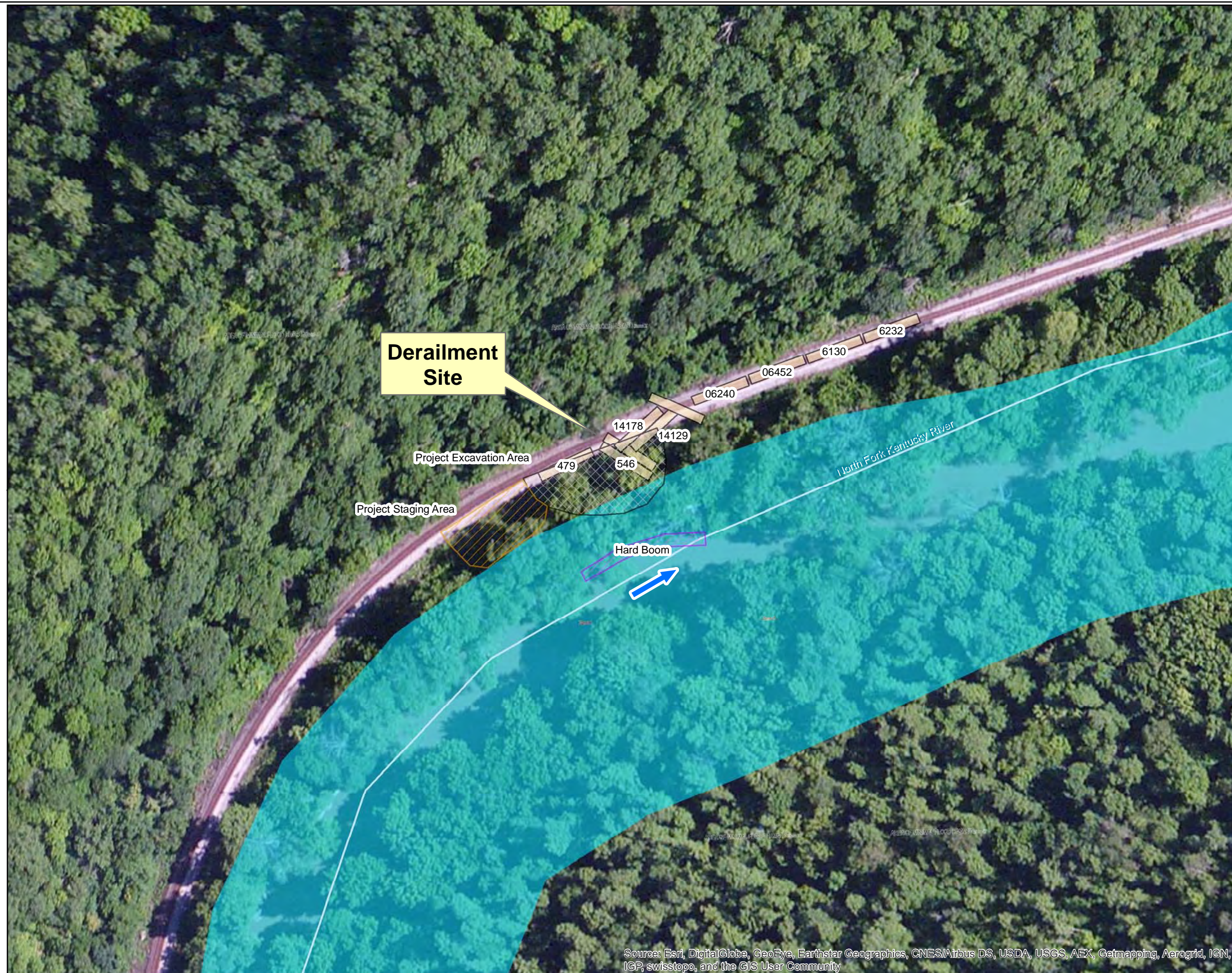
Legend

- Derailment Site
- Well Source
- Water Treatment Plant
- Wellhead Protection Area
- ➔ River Flow Direction

0 22,500
 Feet

amec foster wheeler
 Amec Foster Wheeler
 Environment & Infrastructure, Inc.
 271 Mill Road
 Chelmsford, MA
 (978) 692-9090

Source: Esri, DigitalGlobe, GeoEye, Earthstar Geographics, CNES/Airbus DS, USDA, USGS, AEX, Getmapping, Aerogrid, IGN, IGP, swisstopo, and the GIS User Community



SITE DERAILMENT
CARS LAYOUT MAP

CSX Emergency Response

Breathitt County, KY



FIGURE 3

Legend

Type

- Railroad Cars
- Hard Boom
- Project Excavation Area
- Project Staging Area
- Rivers
- River Flow Direction

0 100
Feet

amec foster wheeler
Amec Foster Wheeler
Environment & Infrastructure, Inc.
271 Mill Road
Chelmsford, MA
(978) 692-9090

Source: Esri, DigitalGlobe, GeoEye, Earthstar Geographics, CNES/Airbus DS, USDA, USGS, AEX, Getmapping, Aerogrid, IGN, IGP, swisstopo, and the GIS User Community



Derailment Site

North Fork Kentucky River



Source: Esri, DigitalGlobe, GeoEye, Earthstar Geographics, CNES/Airbus DS, USDA, USGS, AEX, Getmapping, Aerogrid, IGN, IGP, swisstopo, and the GIS User Community

FLOOD ZONE MAP

CSX Emergency Response

Breathitt County, KY




Location of Site



FIGURE 4



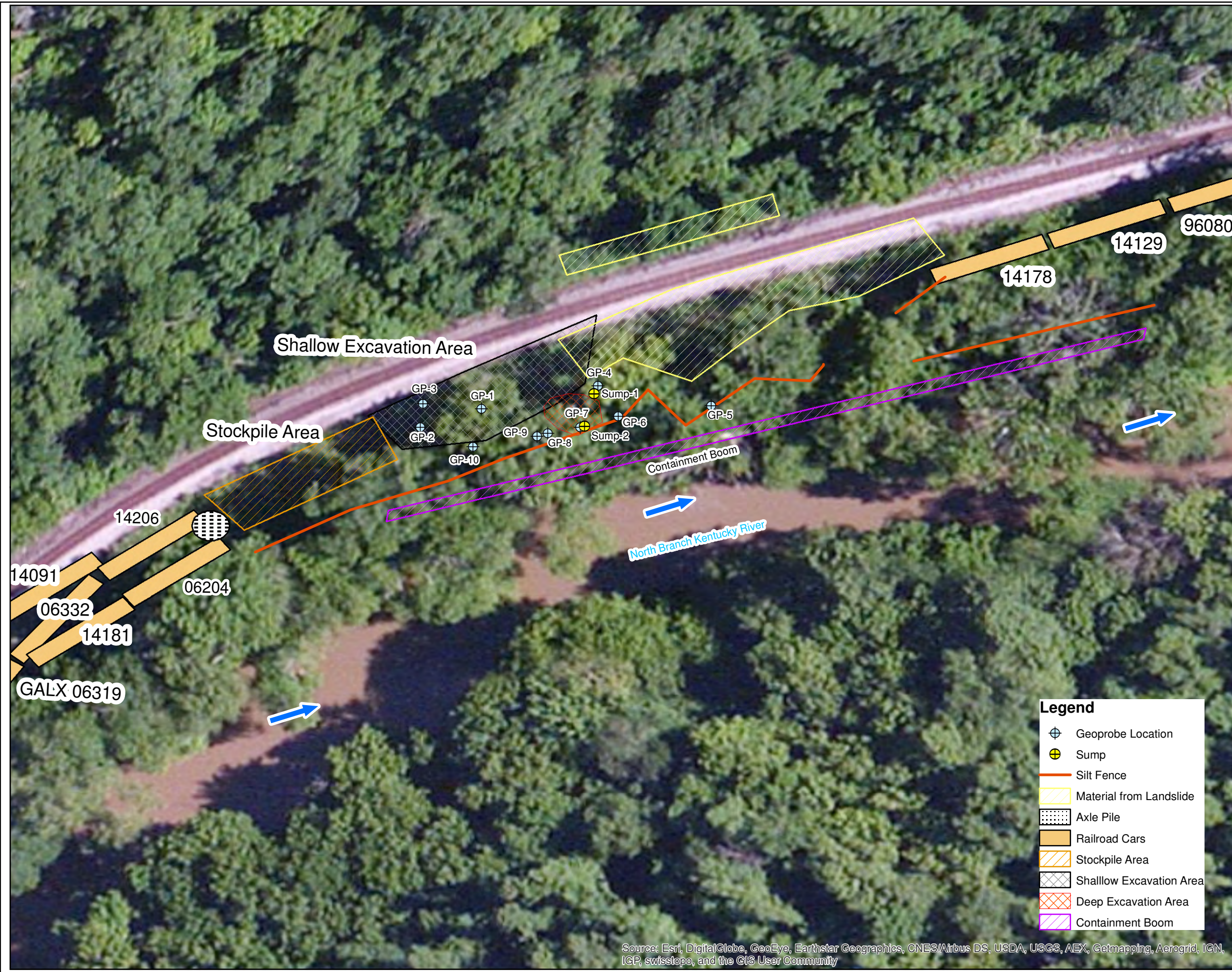
Legend

-  Derailment Site
-  Rivers
-  River Flow Direction



Amec Foster Wheeler
 Environment & Infrastructure, Inc.
 271 Mill Road
 Chelmsford, MA
 (978) 692-9090

SITE DERAILMENT
 WOLF CREEK DERAILMENT AREA
 CSX Emergency Response
 Breathitt County, KY



- Legend**
- ⊕ Geoprobe Location
 - ⊕ Sump
 - Silt Fence
 - ▨ Material from Landslide
 - ▤ Axle Pile
 - ▭ Railroad Cars
 - ▨ Stockpile Area
 - ▨ Shallow Excavation Area
 - ▨ Deep Excavation Area
 - ▨ Containment Boom

FIGURE 5
 [CSX]

River Flow Direction
 0 60
 Feet

 Amec Foster Wheeler
 Environment & Infrastructure, Inc.
 271 Mill Road
 Chelmsford, MA
 (978) 692-9090

Source: Esri, DigitalGlobe, GeoEye, Earthstar Geographics, CNES/Airbus DS, USDA, USGS, AEX, Getmapping, Aerogrid, IGN, ICP, swisstopo, and the GIS User Community



SITE DERAILMENT
INVESTIGATION AREA

CSX Emergency Response

Breathitt County, KY



FIGURE 6

[CSX]

Legend

- Confirmatory Sample
- ⊕ Geoprobe
- ⊕ Sump
- Silt Fence
- Material from Landslide
- Stockpile Area
- Shallow Excavation Area
- Deep Excavation Area
- Containment Boom
- River Flow Direction

0 30
Feet

**amc
foster
wheeler**

Amec Foster Wheeler
Environment & Infrastructure, Inc.
271 Mill Road
Chelmsford, MA
(978) 692-9090

Source: Esri, DigitalGlobe, GeoEye, Earthstar Geographics, CNES/Airbus DS, USDA, USGS, AEX, Getmapping, Aerogrid, IGN, ICP, swisstopo, and the GIS User Community



**SITE DERAILMENT
WOLF CREEK DERAILMENT AREA**

CSX Emergency Response

Breathitt County, KY

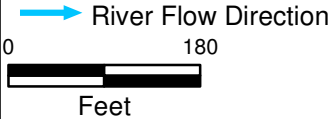
Location of Site



FIGURE 7



- Legend**
- ⊕ Geoprobe Location
 - ⊕ Sump
 - Culvert
 - Silt Fence
 - ▨ Material from Landslide
 - ▤ Axle Pile
 - Railroad Cars
 - ▨ Stockpile Area
 - ▨ Shallow Excavation Area
 - ▨ Deep Excavation Area
 - ▨ Containment Boom



Amec Foster Wheeler
Environment & Infrastructure, Inc.
271 Mill Road
Chelmsford, MA
(978) 692-9090

Source: Esri, DigitalGlobe, GeoEye, Earthstar Geographics, CNES/Airbus DS, USDA, USGS, AEX, Getmapping, Aerogrid, IGN, ICP, swisstopo, and the GIS User Community



PHOTO 1:

View of shallow excavation area from the northeast facing southwest.



PHOTO 2:

View of final grading on shallow excavation from the west facing east.



PHOTO 3:

View of excavation area from the southwest facing northeast.



PHOTO 4:

View of placement of Biomatrix over deep excavation area from the west facing east.



PHOTO 5:

View of silt fence from the northeast facing southwest.



PHOTO 6:

View of boom maintenance from the northeast facing southwest.