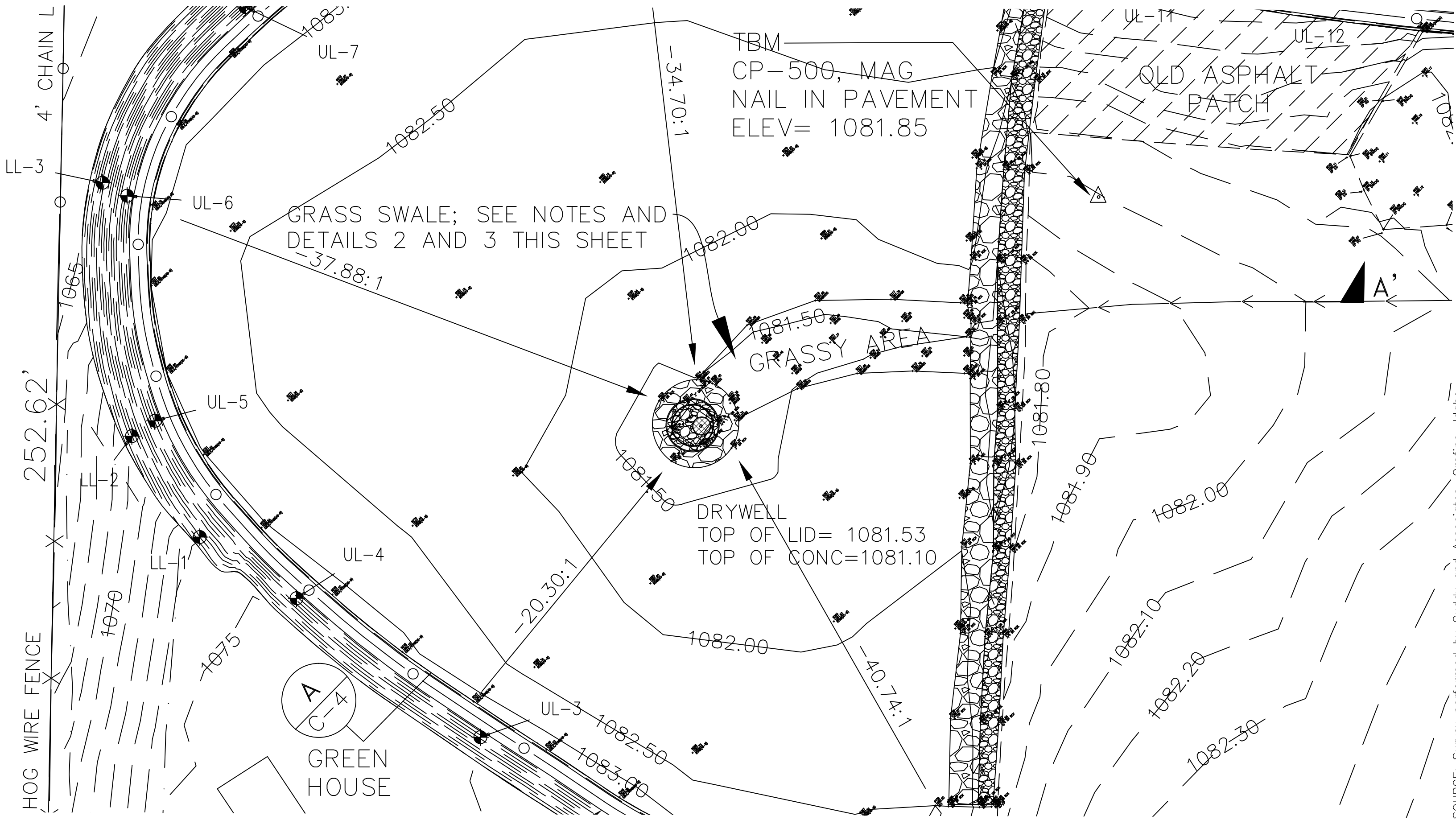
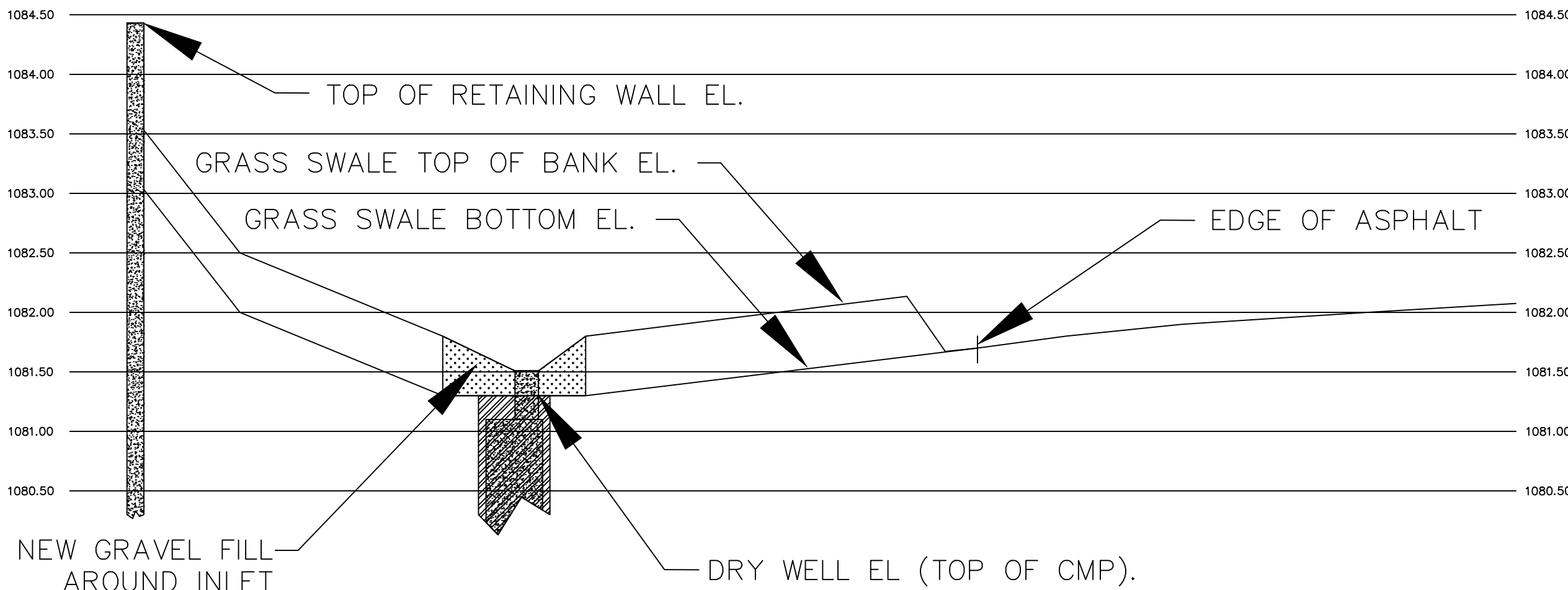


GRASS SWALE NOTES

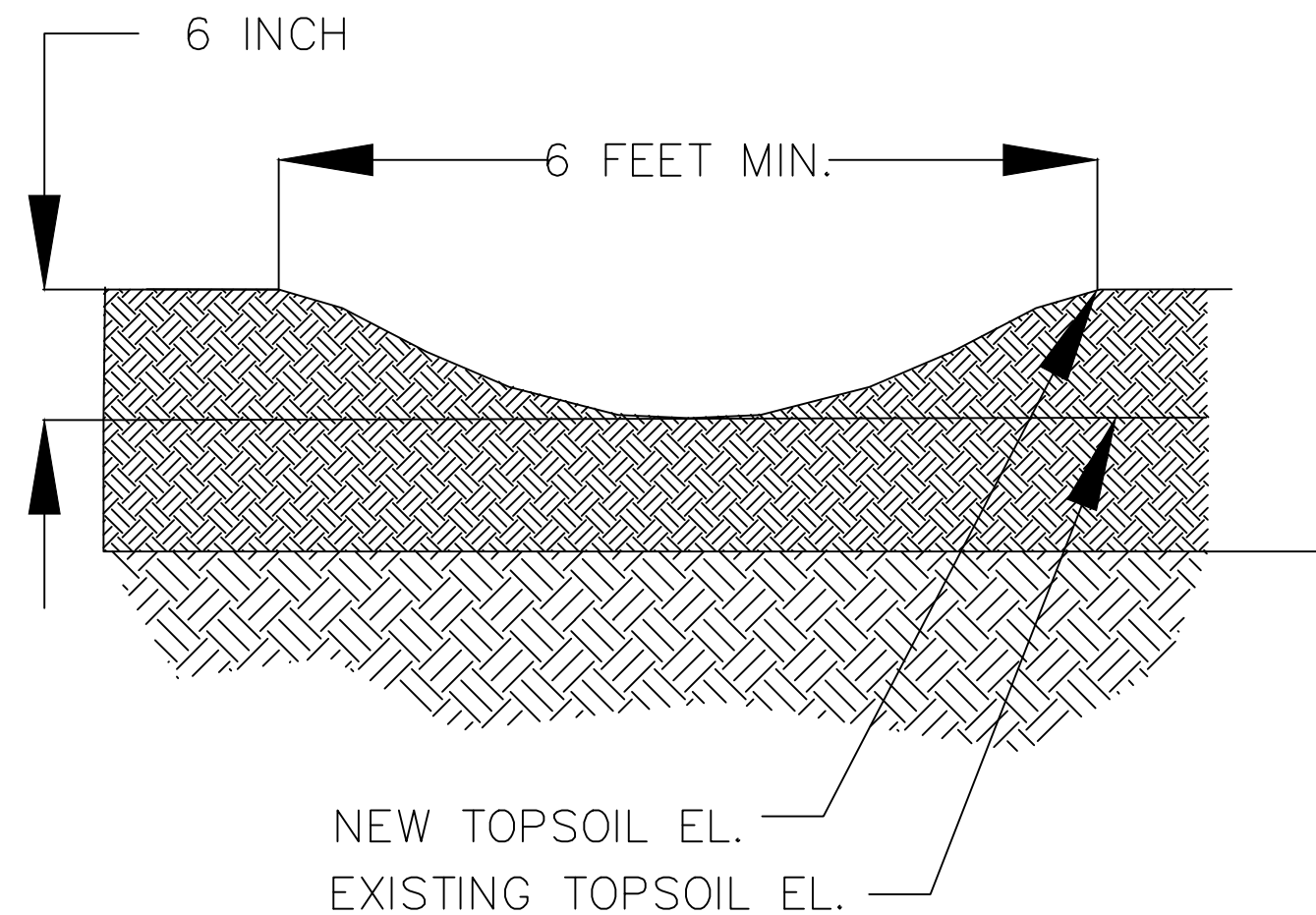
1. THE GRASS SWALE IS DESIGNED TO CONVEY STORMWATER FROM THE PARKING LOT TO THE GRAVEL SURROUNDING THE INLET FOR THE DRYWELL.
2. THE BOTTOM ELEVATION OF THE GRASS SWALE ALLOWS FOR POSITIVE DRAINAGE.



1 GRASS SWALE PLAN ALONG LINE A - A'
C-2 SCALE: 1" = 10'-0"



2 GRASS SWALE PROFILE ALONG LINE A - A'
C-4 HORIZONTAL SCALE: 1" = 10'-0" VERTICAL SCALE: 1" = 0'-6"



3 GRASS SWALE DETAIL
C-4 NOT TO SCALE

RECORD
DRAWING



Rev	Date	By	Description
1	07/2015	M. FULTON	ISSUED FOR CONSTRUCTION
2	07-14-15	TCC	TC

SIZE D
IF SHEET IS LESS
THAN 22"x34"
IT IS REDUCED
PRINT-
SCALE REDUCED
ACCORDINGLY
ONE INCH

Rev	Date	By	Description
1	07/2015	M. FULTON	ISSUED FOR CONSTRUCTION
2	07-14-15	TCC	TC

ecology and environment, inc.
Global Environmental Specialists
333 SW Fifth Avenue, Suite 600
Portland, Oregon 97204
(503) 248-5600



IDAHO
CLEARWATER COUNTY
2015 SITE RESTORATION REPAIRS
OROFINO, CLEARWATER COUNTY, IDAHO
DRAINAGE SWALE DETAILS

Sheet
reference
number:
C-4
SHEET 4 OF 6