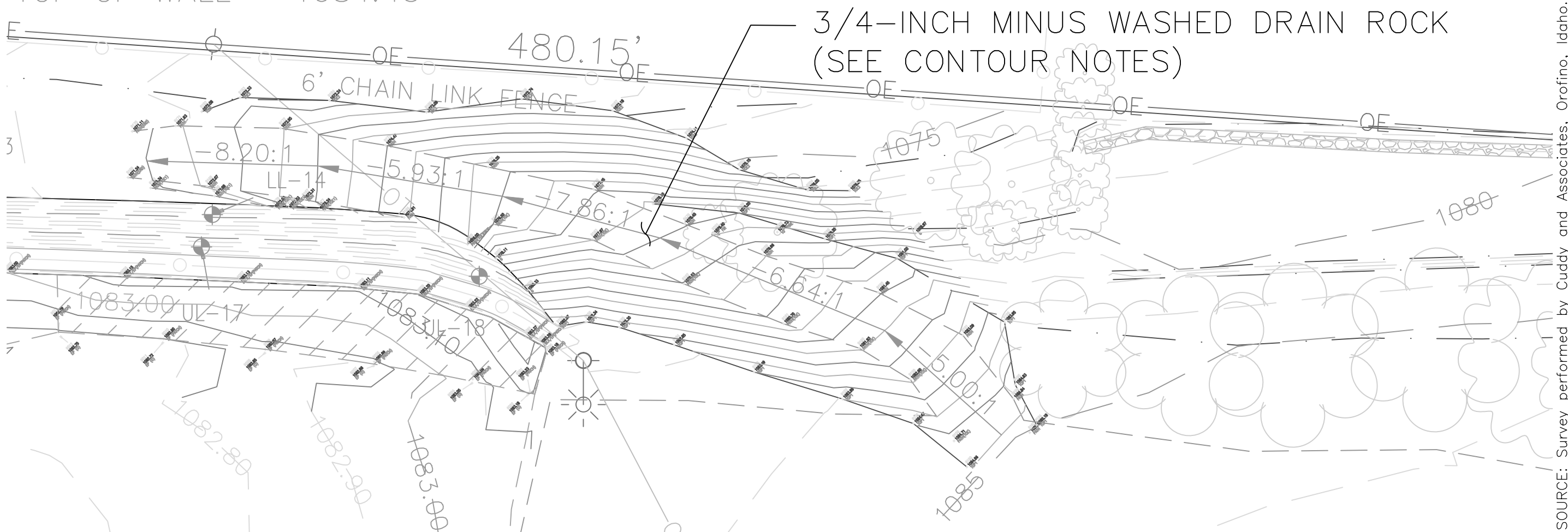


CHAIN LINK FENCE
TOP OF WALL = 1084.43

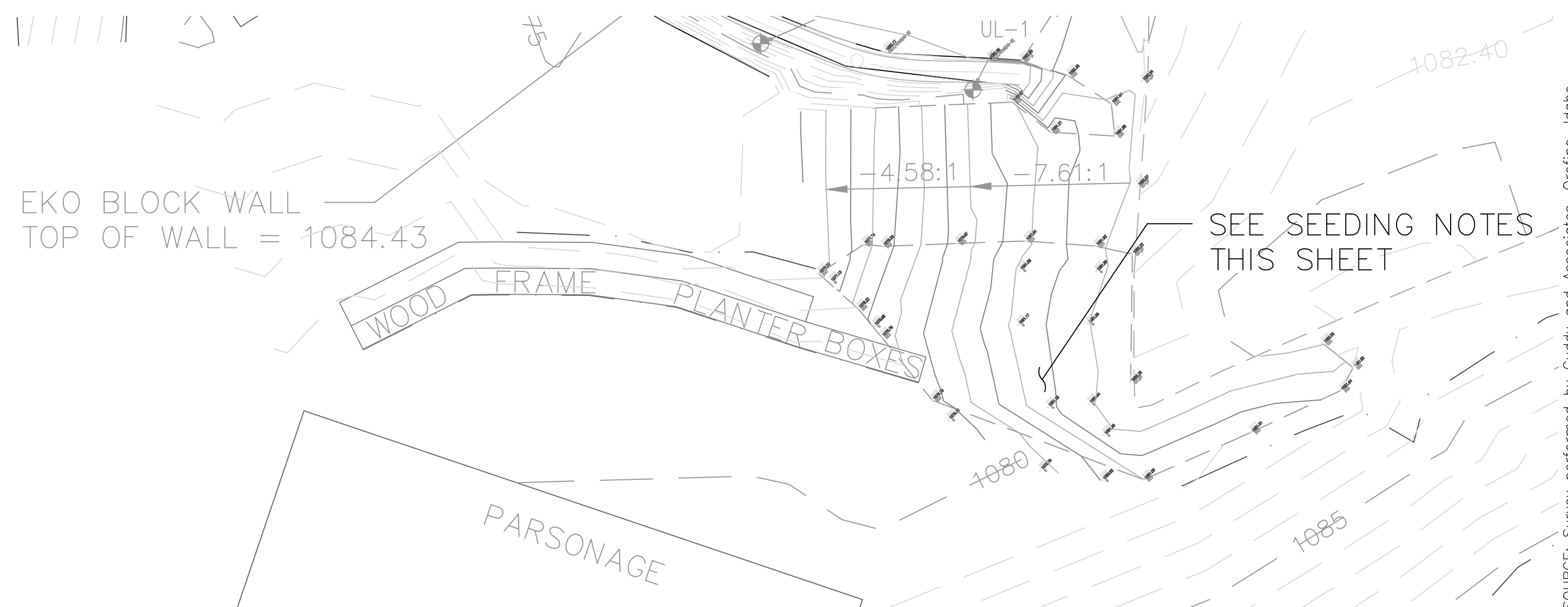
LOOSE ROCK WALLS

3/4-INCH MINUS WASHED DRAIN ROCK
(SEE CONTOUR NOTES)



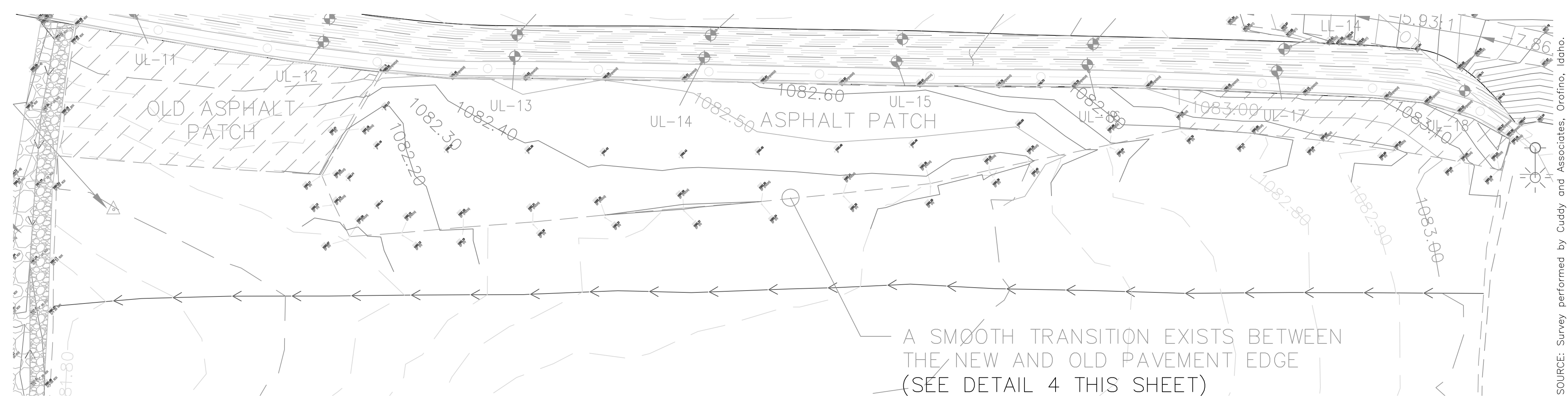
1 LOWER WALL RAMP
C-2 CONTOUR LINES SHOWN AT 1 FOOT INTERVALS

SCALE IN FEET
0 10 20 30



2 PARSONAGE CONTOURS
C-2 CONTOUR LINES SHOWN AT 0.5 FOOT INTERVALS

SCALE IN FEET
0 10 20 30



3 ASPHALT REPAIR AREA
C-2 CONTOUR LINES SHOWN AT 0.5 FOOT INTERVALS

SCALE IN FEET
0 10 20 30

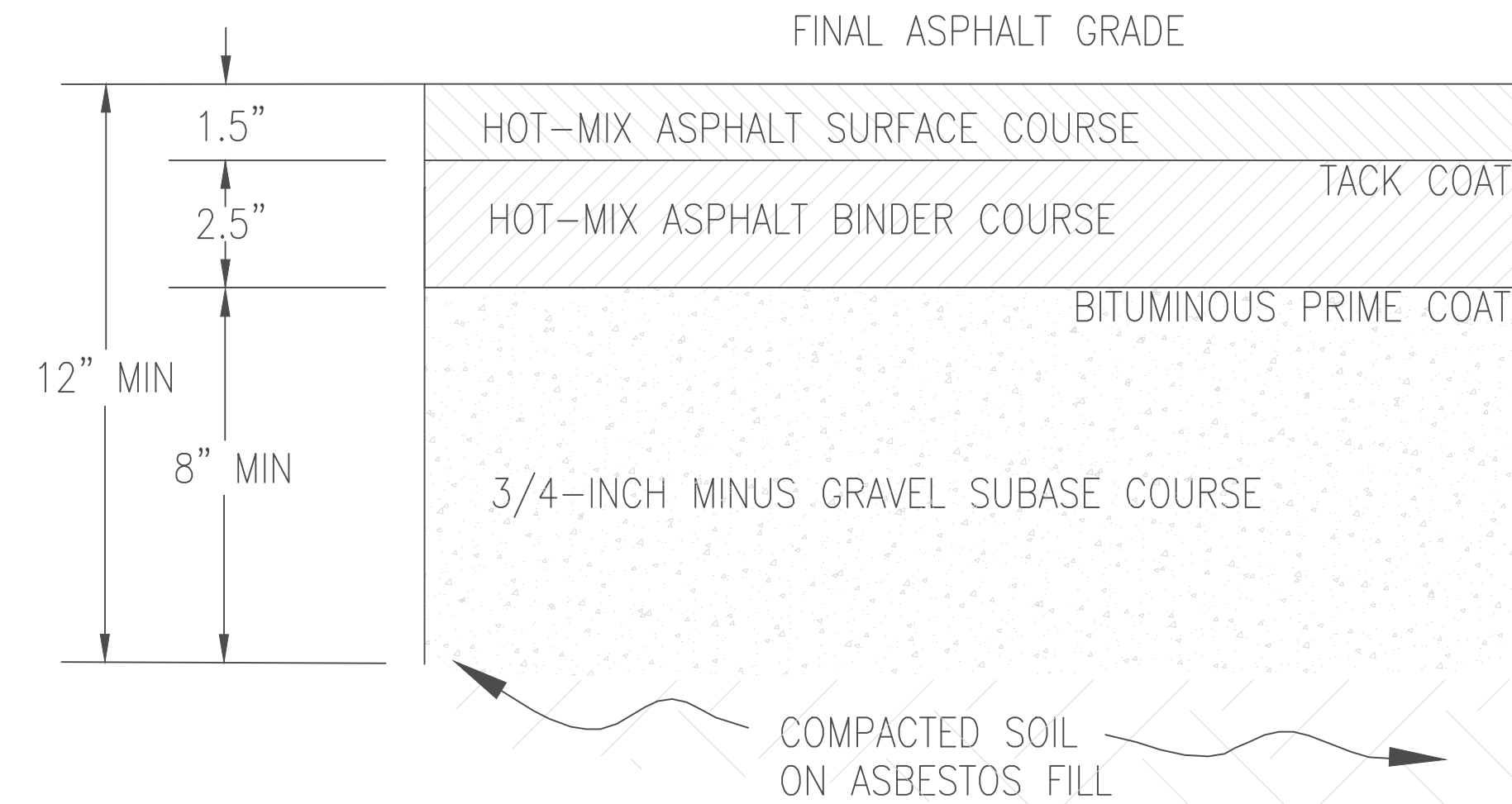
A SMOOTH TRANSITION EXISTS BETWEEN
THE NEW AND OLD PAVEMENT EDGE
(SEE DETAIL 4 THIS SHEET)

CONTOUR NOTES

1. THE LOWER WALL RAMP MAXIMUM SLOPE IS 20% (11.3 degrees).

SEEDING NOTES

1. BROADCAST SEED WAS CERTIFIED PURE LIVE SEED (PLS) OF A MINIMUM 4 LBS PER ACRE SHEEP FESCUE AND 4 LBS PER ACRE HARD FESCUE.



4 ASPHALT REPAIR CROSS-SECTION
C-5 NOT TO SCALE



Symbol	Description	Date	Approved	TC
1	RECORD DRAWING ISSUED	07-14-15	TC	
0	ISSUED FOR CONSTRUCTION	04-12-15		

SIZE D
IF SHEET IS LESS
THAN 22"x34"
IT IS REDUCED
PRINT-
SCALE REDUCED
ACCORDINGLY
ONE INCH

Designed by	Drawn by	Spec. No.	TDD No.	Date	Rev.
M. FULTON	TCC		14-07-0012	07/2015	1
Reviewed by	S. HALL				
Approved by	ALPDELL				
File name	C:\Users\Orofino\Desktop\041715.dwg				
Plot date	04-12-15				
Plot name	04-12-15				

ecology and environment, inc.
Global Environmental Specialists
333 SW Fifth Avenue, Suite 600
Portland, Oregon 97204
(503) 248-5600



IDAHO
CLEARWATER COUNTY
2015 SITE RESTORATION REPAIRS
OROFINO, CLEARWATER COUNTY, IDAHO
SITE CONTOUR AND
ASPHALT REPAIR DETAILS

RECORD
DRAWING

Sheet
reference
number:
C-5
SHEET 5 OF 6