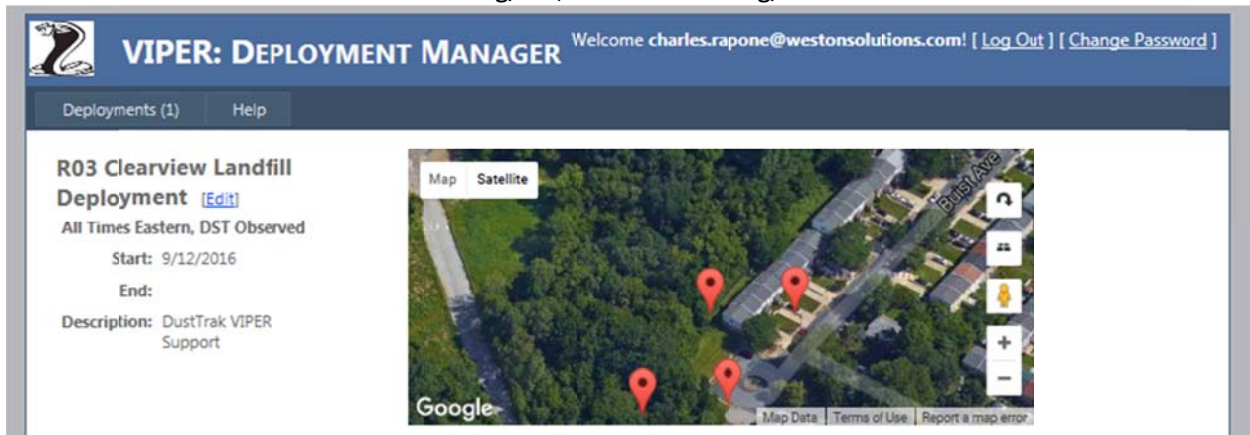
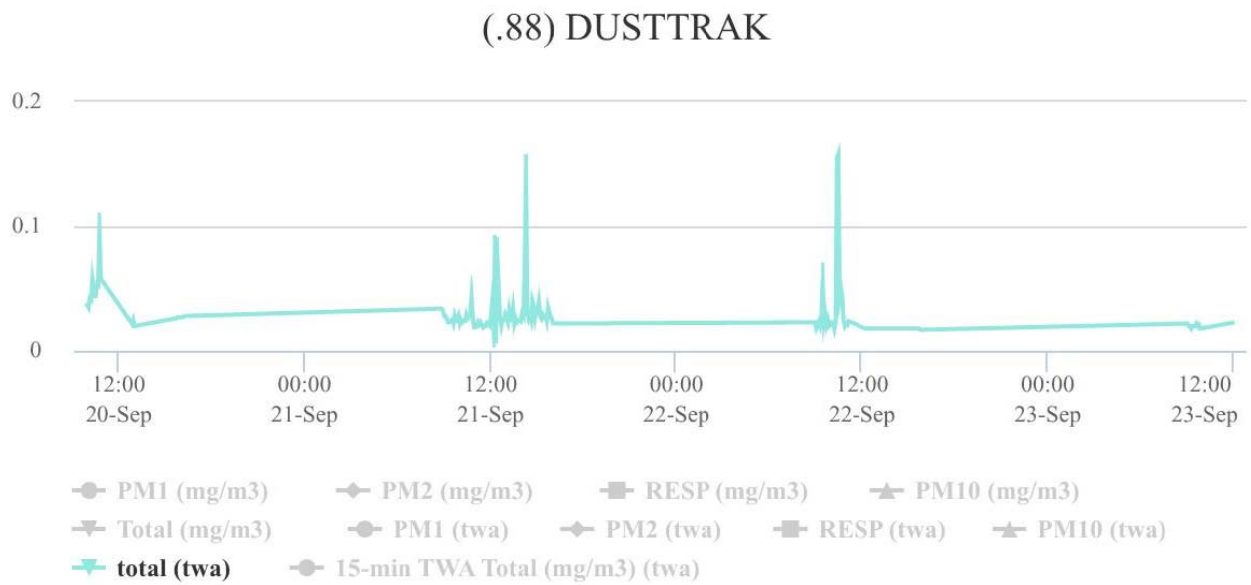


Lower Darby Creek Area Superfund Site Removal-
Dust Track Monitor Data for the week of 9/19-9/23, 2016

Dust Action Levels: Residential = 0.813 mg/m^3 ; Worker = 2.1 mg/m^3



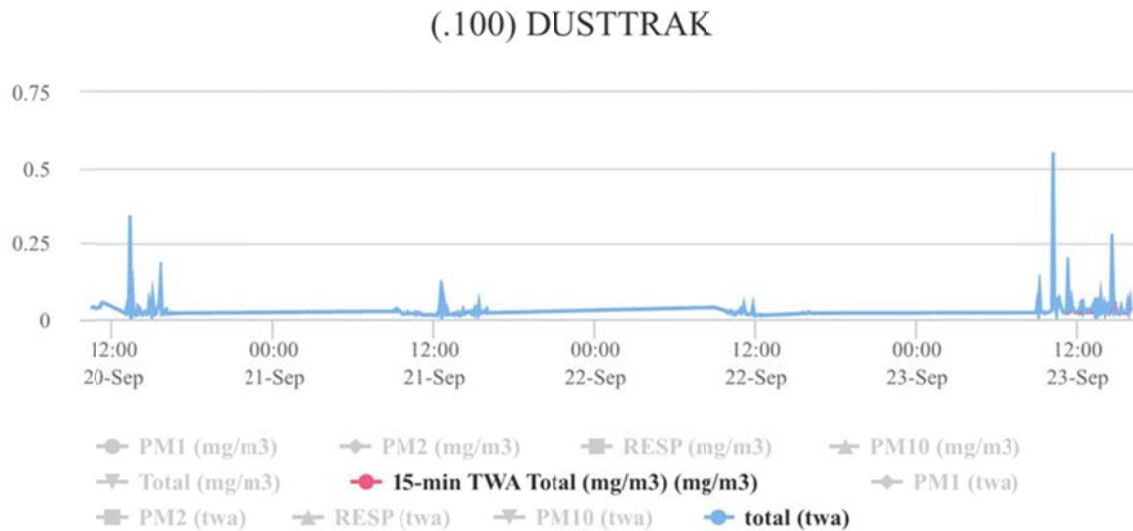
DustTrak .88-Northwest Location (downwind)



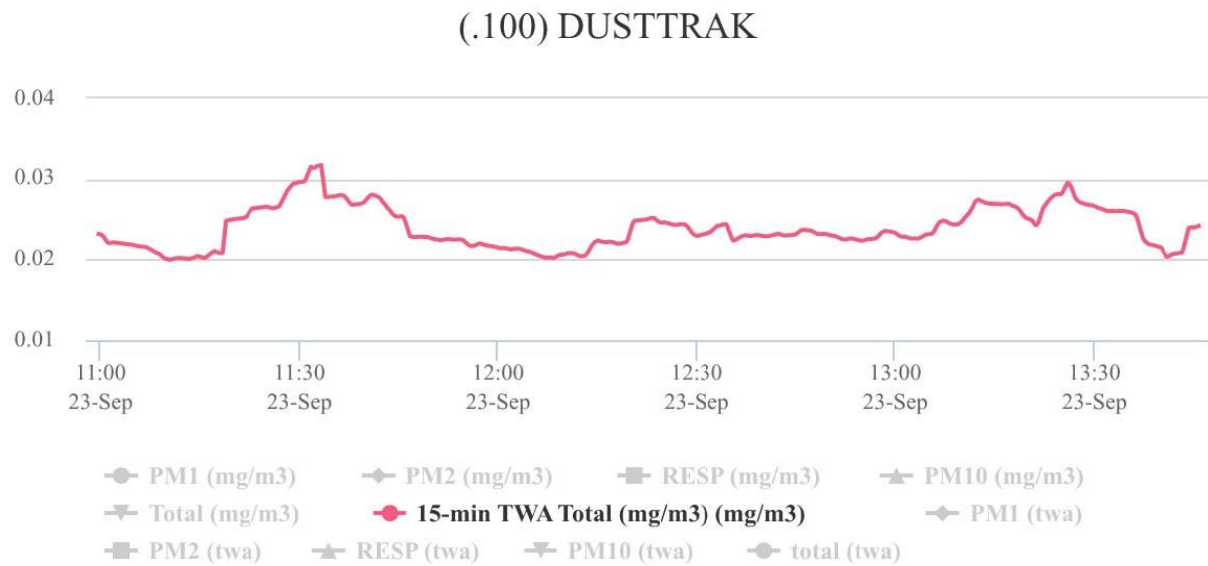
Note: Error with 15 min TWA reporting on EPA VIPER Website. Air monitor still collected all data. Daily TWA reported in figure above.

Lower Darby Creek Area Superfund Site Removal-
Dust Track Monitor Data for the week of 9/19-9/23, 2016

Dust Action Levels: Residential = 0.813 mg/m^3 ; Worker = 2.1 mg/m^3
DustTrak .100 East location (downwind)



Note: only Sept 23rd 15-min TWA data reported. Air monitor still collected all data. Daily TWA reported in figure above for week of 9/20-9/23/16.



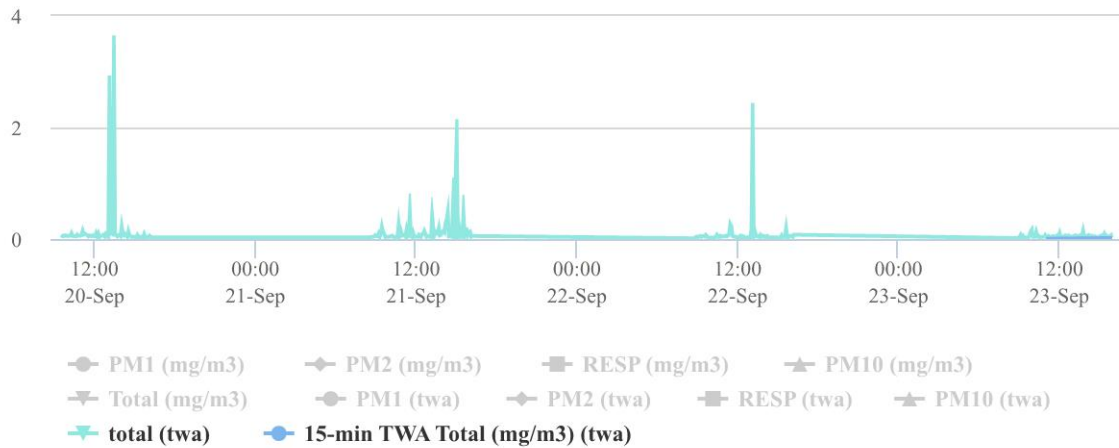
Note: only Sept 23rd 15-min TWA data reported

Lower Darby Creek Area Superfund Site Removal-
Dust Track Monitor Data for the week of 9/19-9/23, 2016

Dust Action Levels: Residential = 0.813 mg/m^3 ; Worker = 2.1 mg/m^3

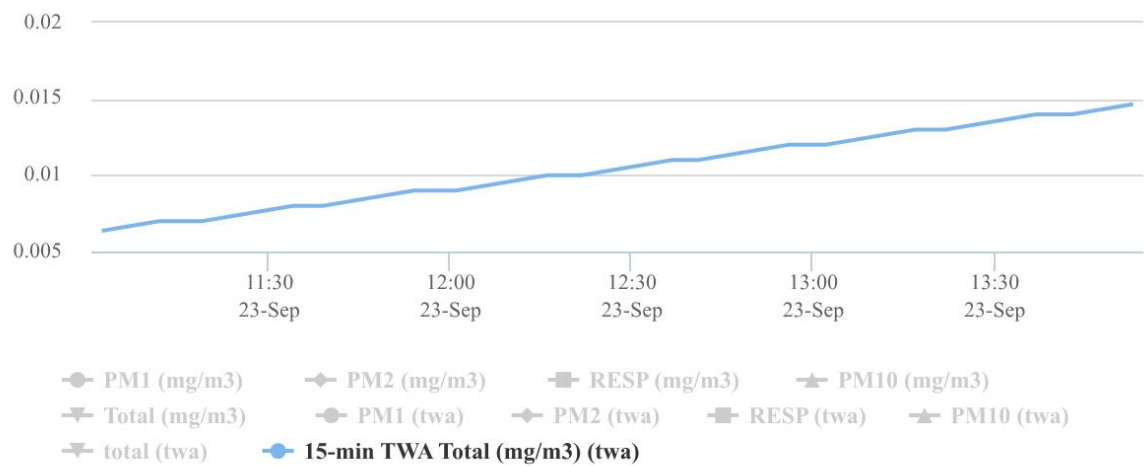
Dust Trak .125-Located behind Command Post (upwind)

(.125) DUSTTRAK



Note: only Sept 23rd 15-min TWA data reported. Air monitor still collected all data. Daily TWA reported in figure above for week of 9/20-9/23/16.

(.125) DUSTTRAK



Note: only Sept 23rd 15-min TWA data reported

Lower Darby Creek Area Superfund Site Removal-
Dust Track Monitor Data for the week of 9/19-9/23, 2016

Dust Action Levels: Residential = 0.813 mg/m^3 ; Worker = 2.1 mg/m^3

Dust Trak .92- Located Southeast adjacent to driveway (upwind)

