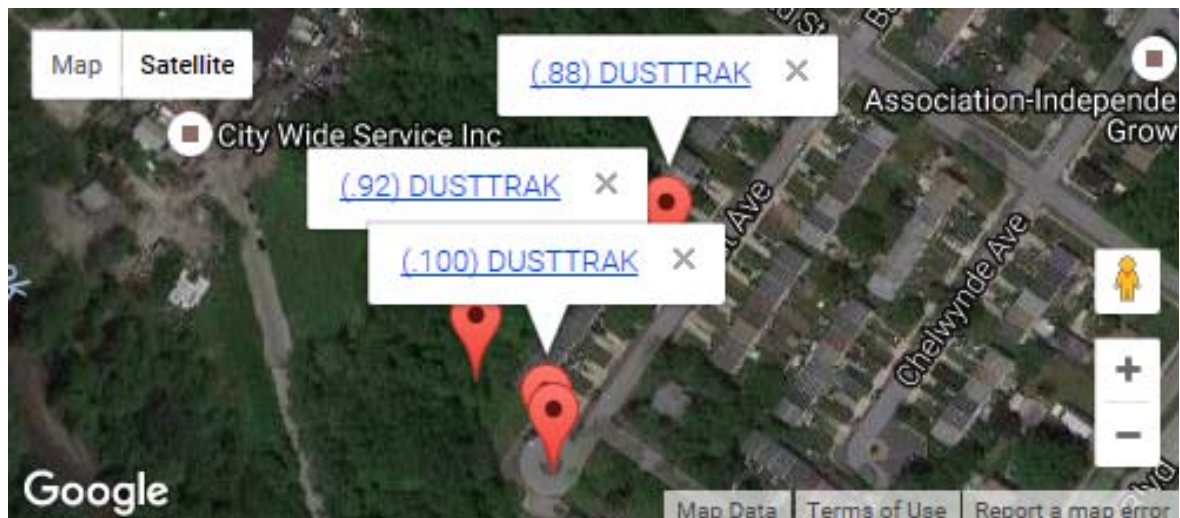
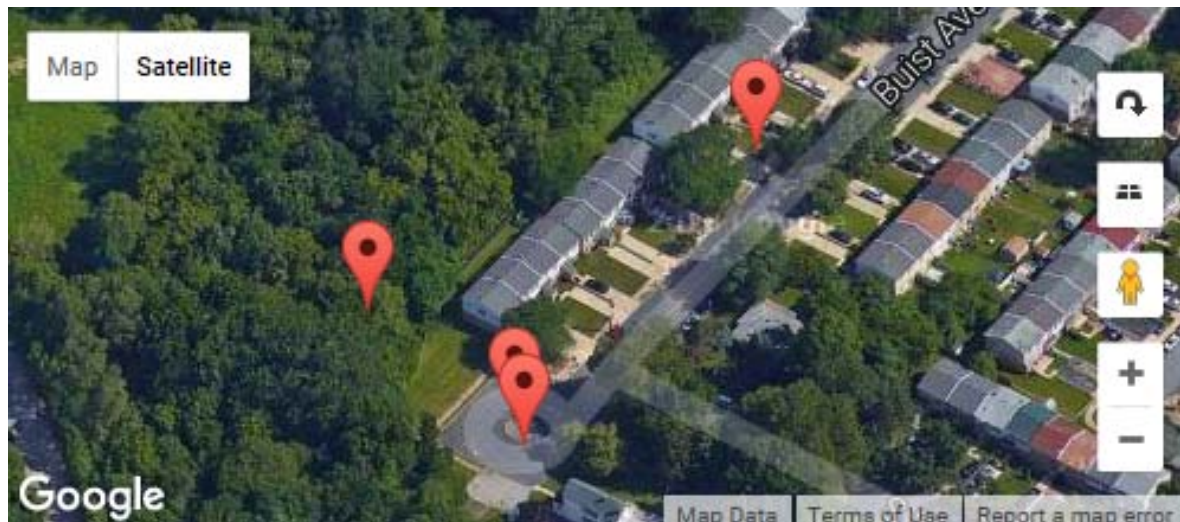


Lower Darby Creek Area Superfund Site Removal

Dust Track Monitor Data for 10/07/2016

Weather: Clear, Sunny, Slight Wind out of the Northeast at 2 mph, high of 75 degrees

Dust Action Levels: Residential = 0.813 mg/m³ ; Worker = 2.1 mg/m³



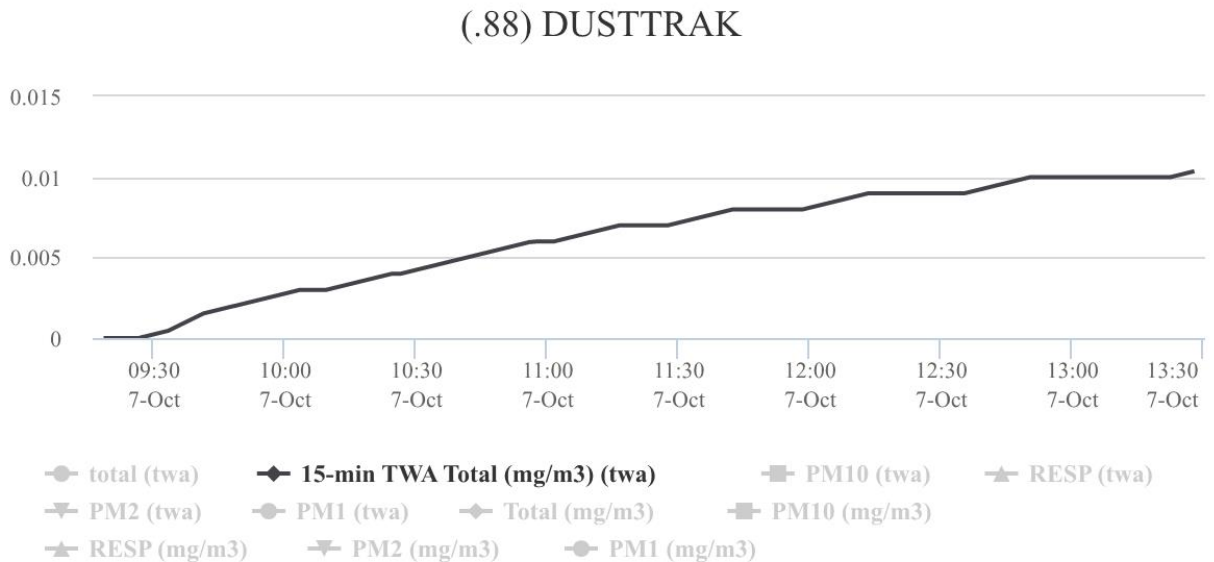
Lower Darby Creek Area Superfund Site Removal

Dust Track Monitor Data for 10/07/2016

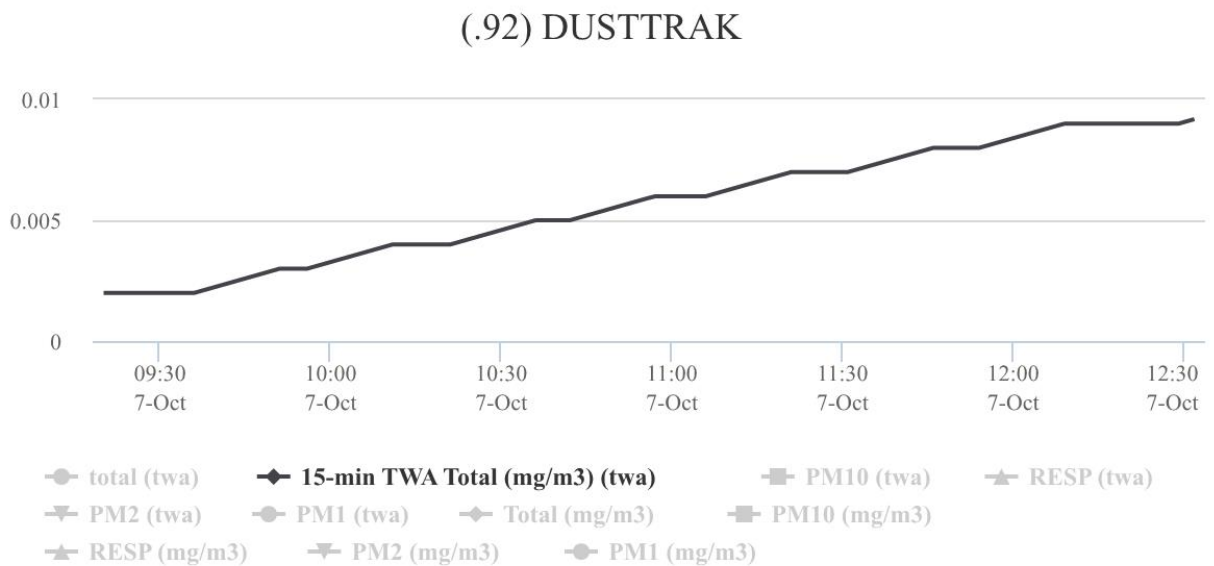
Weather: Clear, Sunny, Slight Wind out of the Northeast at 2 mph, high of 75 degrees

Dust Action Levels: Residential = 0.813 mg/m3 ; Worker = 2.1 mg/m3

DustTrak .88-Northeast Location (upwind)



DustTrak .92-Southwest (downwind)



Lower Darby Creek Area Superfund Site Removal

Dust Track Monitor Data for 10/07/2016

Weather: Clear, Sunny, Slight Wind out of the Northeast at 2 mph, high of 75 degrees

Dust Action Levels: Residential = 0.813 mg/m3 ; Worker = 2.1 mg/m3

DustTrak .100 Southeast Location (downwind)

