

Tern Island Preliminary Assessment (PA) and TSD

To access the Tern Island StoryMap, click on the link below:

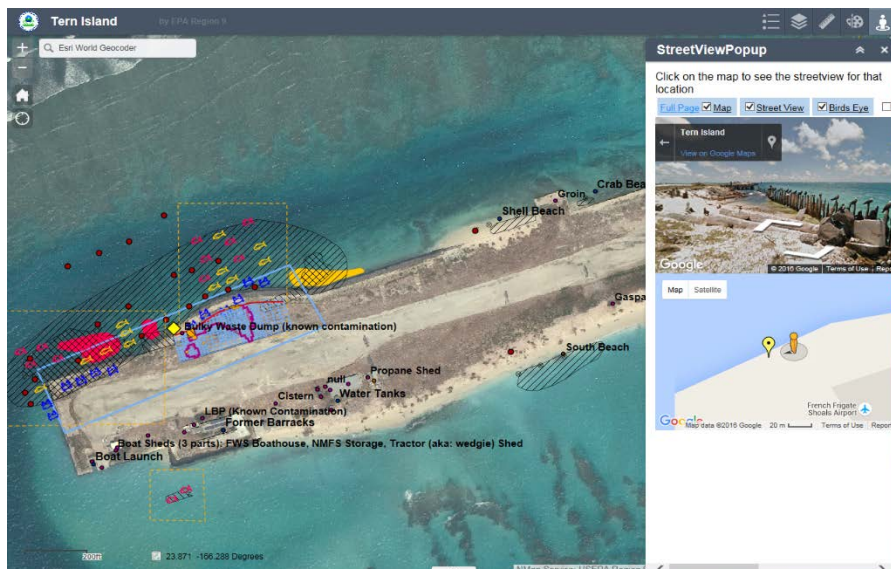
[Tern Island StoryMap](#)

Scroll through the story map here or with your mouse

This is a real geospatial map... you can zoom and move it around with your mouse!

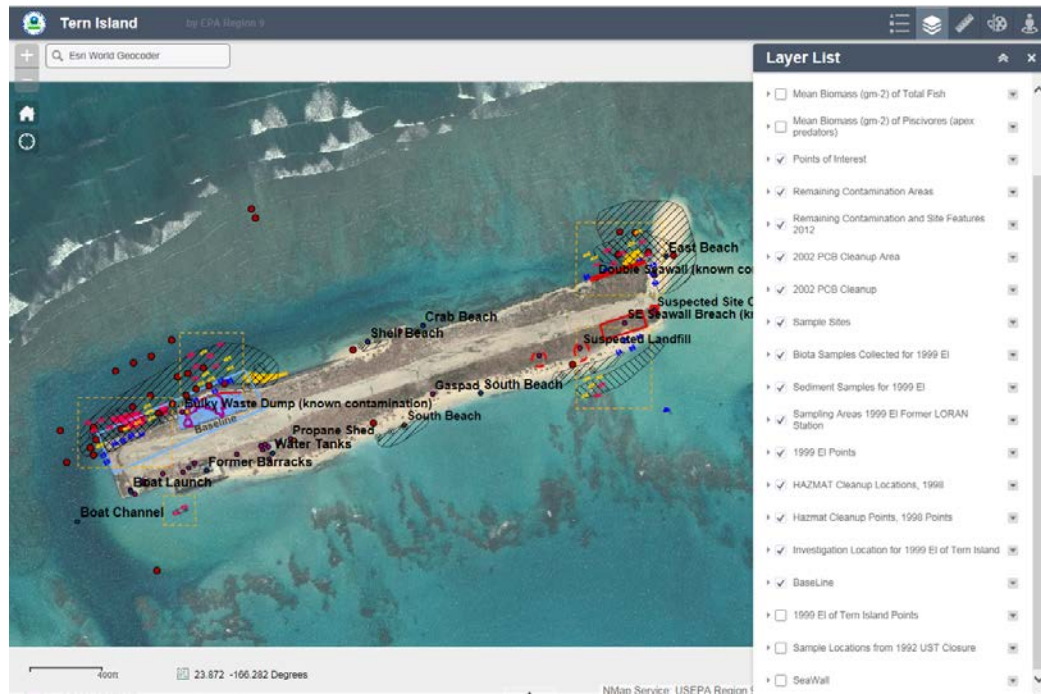
To access the Tern Island Assessment and Street View, click on the link below:

[Tern Island Assessment and Street View](#)

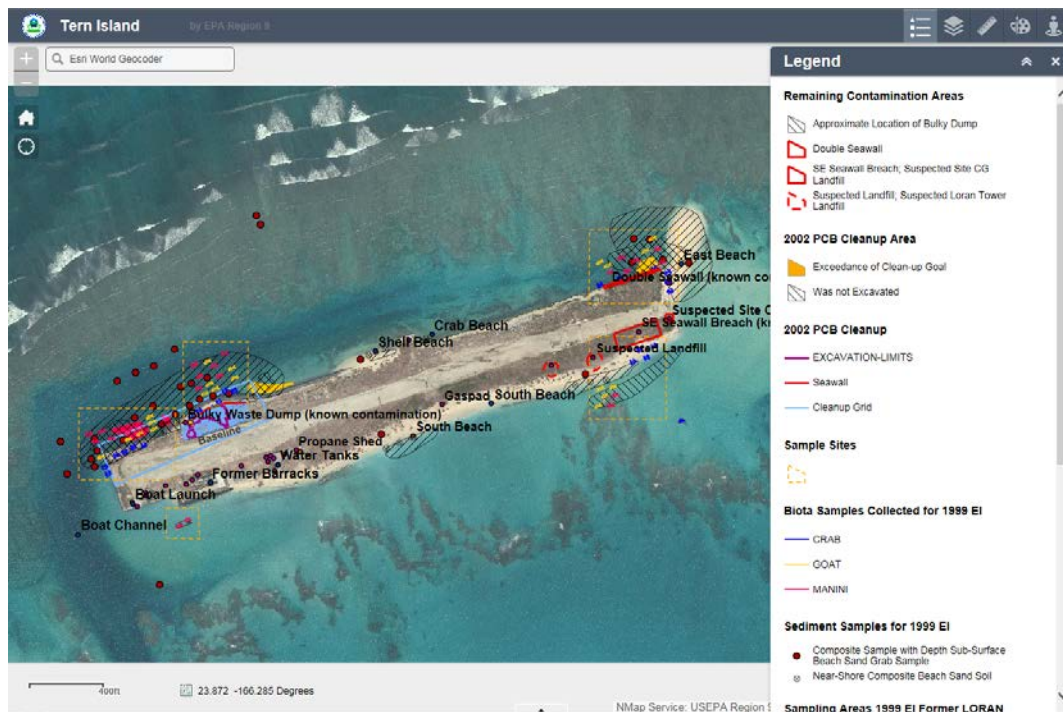


Tern Island Preliminary Assessment (PA) and TSD

To access the data, open the Layer List icon on the upper right and select the data points desired.....

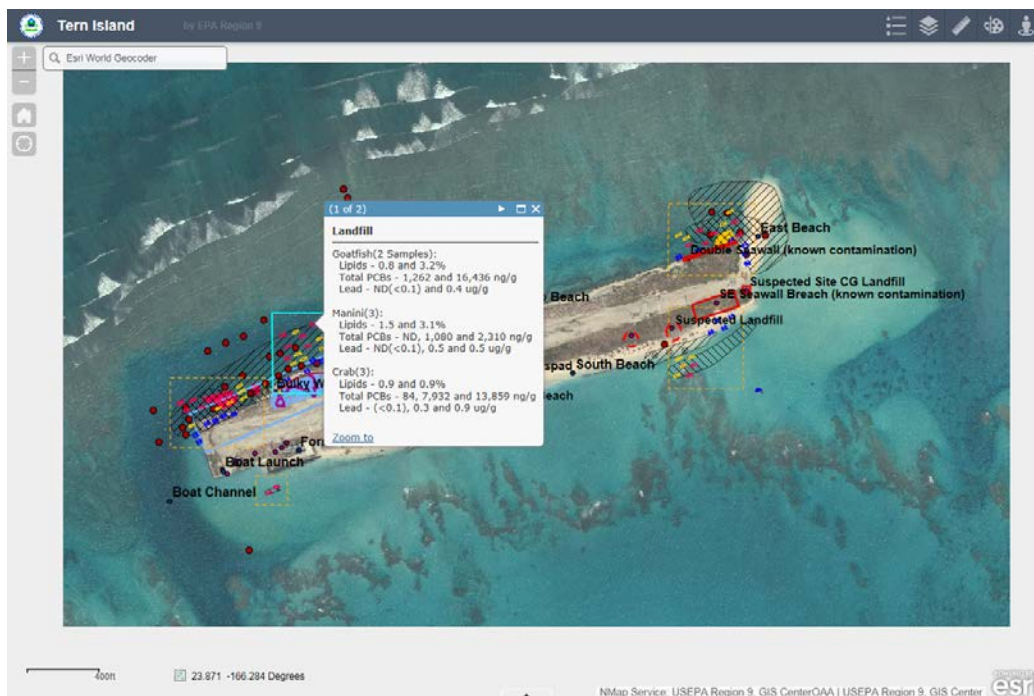


To view the data legend, select the Legend icon in the upper right as displayed below.....




Tern Island Preliminary Assessment (PA) and TSD


To view the data in detail, click on the data point of interest..... note that more than one data layer may open with each selection (see '1 of 2' in the example below) - click on the small white arrow in the blue ribbon of the data box to horizontally scroll through the selected data layers!



To read about the Tern Island Preliminary Assessment, click on the link below:



[Tern Island Preliminary Assessment](#)

**ON-SCENE
COORDINATOR**

United States
Environmental Protection
Agency

Profile | Notices | Images | Documents | Pol/SitReps | Contacts | Links | Map | Login

TERN ISLAND PRELIMINARY ASSESSMENT



KML | RSS | location | area map | bookmark

HONOLULU, HI - REGION IX

Site Contact:

William Robberson
Oceania Regional Response Team
robberson.bill@epa.gov

French Frigate Shoals
NorthWest Hawaiian Islands
Honolulu, HI 96898
www.epaosc.org/TernIsland

Latitude: 23.8701240
Longitude: -166.2845870

RESOURCES

Notices

None for this site

Images

None for this site

Documents

Summary of Tern Island Preliminary Assessment
Tern Island PA Technical Support Document

List All...

Pol/SitReps

None for this site

Contacts

None for this site

Links

Story Map Summary of the Tern Island Preliminary Assessment

List All...

US EPA and US FWS Partner in Preliminary Assessment of Tern Island Contamination

Tern Island Preliminary Assessment, French Frigate Shoals, NW Hawaiian Islands:

Tern Island, French Frigate Shoals, is located 564 miles northwest of Honolulu, and comprises part of the Hawaiian Islands National Wildlife Refuge and Papahānaumokuākea Marine National Monument in the NWHI. It also lies within the Coral Reef Ecosystem Reserve managed by the National Oceanic and Atmospheric Administration and the State of Hawaii's NWHI Marine Refuge.

In September 2014, EPA and the U.S. Fish and Wildlife Service released an initial assessment of contamination at Tern Island, a remote island in the chain of Northwestern Hawaiian Islands (NWHI). The results show that there have been releases of hazardous substances such as polychlorinated biphenyls (PCBs) and lead from military wastes buried on the island between World War II and 1979, and further action is warranted.

"The Fish and Wildlife Service is committed to continuing to work with the EPA to establish next steps for further action at Tern Island. Tern Island is part of the Hawaiian Islands National Wildlife Refuge and an important oasis of protection for marine mammals like the endangered monk seal, threatened green sea turtles, and many different species of seabirds."

— Kevin Forester, Chief of the National Wildlife Refuge System in the Pacific Region