


Legend:

 Site Location

0 1 2 4 Miles



Prepared for:
U.S. EPA - Region 8

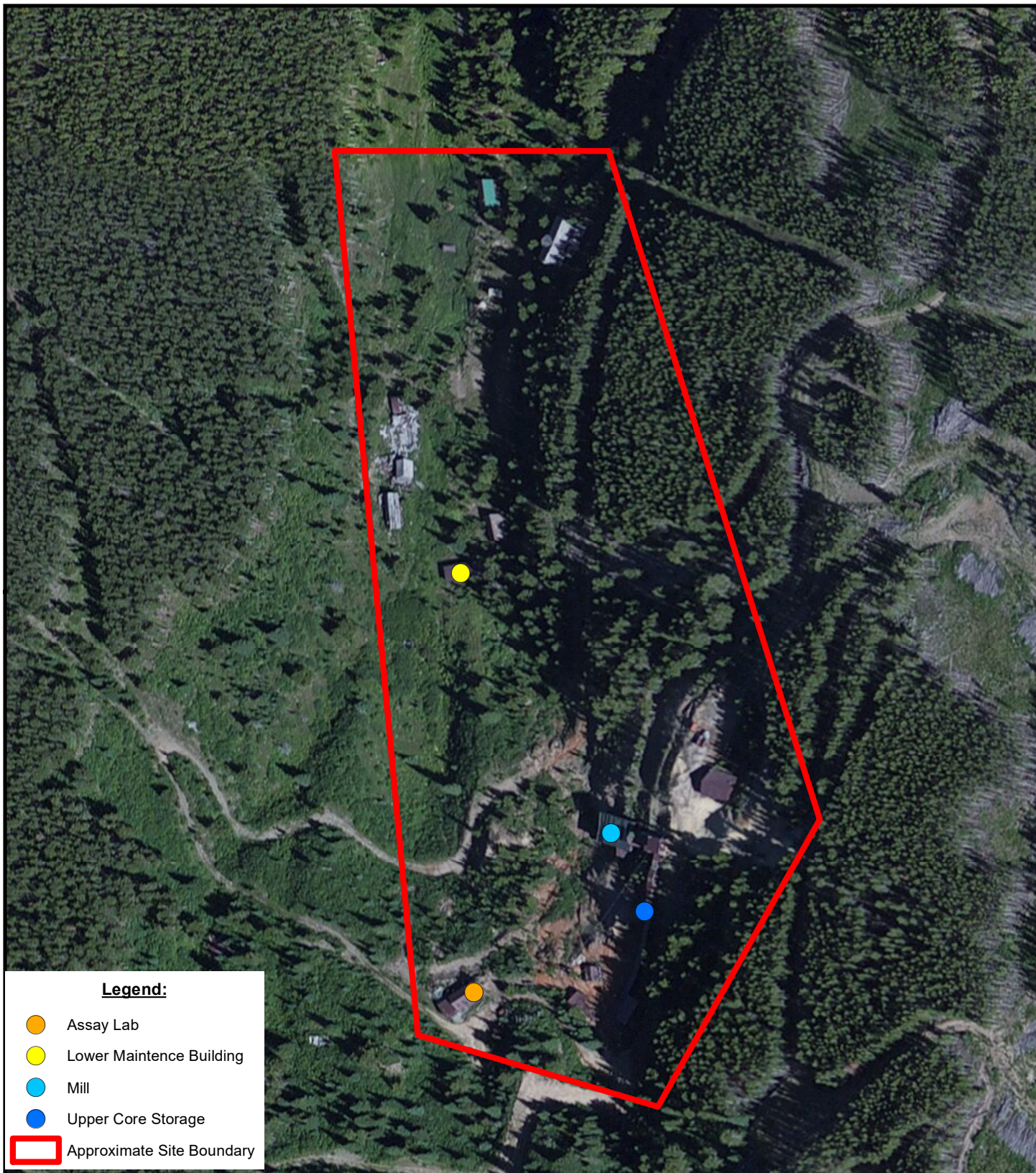
Contract: EP-S8-13-01
TO/TDD: 0001/1708-01

Prepared By:
Weston Solutions, Inc.
START IV
Suite 100
1435 Garrison St.
Lakewood, CO








FIGURE 1 SITE LOCATION MAP BIG 7 MINE NEIHART, CASCADE COUNTY, MONTANA

Date: 8/23/2017



Legend:

-  Assay Lab
-  Lower Maintenance Building
-  Mill
-  Upper Core Storage
-  Approximate Site Boundary

Source:

Site Boundary: Georeferenced Aerial (Google Earth 2017)
Background: ESRI World Imagery (2017)

Coordinate System: WGS 1984 Web Mercator Auxiliary Sphere
Projection: Mercator Auxiliary Sphere
Datum: WGS 1984

Prepared for:
U.S. EPA - Region 8



Contract: EP-S8-13-01
TO/TDD: 0001/1708-01

Prepared By:
Weston Solutions, Inc.
START IV
Suite 100
1435 Garrison St.
Lakewood, CO



**FIGURE 2
SITE VICINITY MAP
BIG 7 MINE
NEIHART, CASCADE COUNTY,
MONTANA**

Date: 8/23/2017

0 140 280 560 Feet

