



Weston Solutions, Inc.
4917 Waters Edge
Suite 235
Raleigh, North Carolina 27606
919-424-2200 • Fax 919-424-2201

Transmitted electronically

February 17, 2006

Mr. Dave Dorian
On-Scene Coordinator
U.S. Environmental Protection Agency
61 Forsyth Street, SW 11th Floor
Atlanta, Georgia 30303

Subject: Emergency Response Letter Report, Revision 0
Saufley Landfill Fire
EPA Contract No. 68-W-00-123
Technical Direction Document (TDD) No. 4W-06-01-B-002
Document Control Number (DCN) WSI-SCD-0003

Dear Mr. Dorian:

Weston Solutions, Inc., Superfund Technical Assessment and Response Team - 2 (START-2) is submitting one copy of the draft Emergency Response Letter Report, Revision 0. The response occurred on January 24-26, 2006, in Pensacola, Escambia County, Florida.

Please contact me at (919) 424-2237 if you have any questions or comments regarding this draft Emergency Response Letter Report.

Sincerely,
Weston Solutions, Inc.

A handwritten signature in dark ink, appearing to read "Barry Peterson", is written over a light gray rectangular background.

Barry Peterson
START-2 Project Manager

Enclosure

cc: Karen Knight, EPA Project Officer
Deborah Hoover, EPA Contracting Officer (w/o enclosure)
Joseph Baer, START-2 Program Manager (w/o enclosure)
Greg Harper, START-2 Emergency Response and Removal Coordinator (w/o enclosure)
START-2 File

EMERGENCY RESPONSE LETTER REPORT

SAUFLEY LANDFILL FIRE
PENSACOLA, ESCAMBIA COUNTY, FLORIDA

Revision 0

Prepared for

U.S. ENVIRONMENTAL PROTECTION AGENCY
Region 4
Atlanta, Georgia 30303

Contract No.	:	68-W-00-123
TDD No.	:	4W-06-01-B-002
Document Control No.	:	WSI-SCD-0003
WESTON Work Order No.	:	12587-001-009-0346-00
Date Prepared	:	February 17, 2006
EPA Work Assignment Manager	:	Dave Dorian
Telephone No.	:	404-229-9520
Prepared by	:	Weston Solutions, Inc.- START-2
START Project Manager	:	Barry Peterson
Telephone No.	:	919-424-2237

Approved by
Joseph Baer
START-2 Program Manager

CONTENTS

<u>Section</u>	<u>Page</u>
1.0 INTRODUCTION	1
2.0 BACKGROUND	1
3.0 SITE ACTIVITIES	1
4.0 EMERGENCY RESPONSE PROTOCOLS	2
4.1 MONITORING.....	2
4.2 PERSONAL PROTECTIVE EQUIPMENT	2
5.0 CONCLUSION.....	2
APPENDICES	
Appendix A	Logbook Notes
Appendix B	Weston Site-Specific Health and Safety Plan
Appendix C	Ambient Air Monitoring Results
Appendix D	TEM-AHERA Analytical Data
Appendix E	Photograph Log
Appendix F	Table of Witnesses

1.0 INTRODUCTION

This document has been prepared in accordance with Technical Direction Document (TDD) No. 4W-06-01-B-002, which the United States Environmental Protection Agency (EPA) assigned to the Weston Solutions, Inc. (WESTON), Superfund Technical Assessment and Response Team - 2 (START-2). The overall scope of this Technical Direction Document (TDD), monitored by On-Scene Coordinator (OSC) Dave Dorian, was to document site activities, monitor ambient air for carbon monoxide (CO), hydrogen sulfide (H₂S), volatile organic compounds (VOCs), particulate matter (PM), and sample the ambient air for possible asbestos originating from the landfill fire at the Saufley Landfill in Pensacola, Escambia County, Florida (See Figures 1, 2 and 3).

2.0 BACKGROUND

On Monday, January 23, 2006, the EPA was contacted by the Florida Health Department to assist in monitoring and sampling the ambient air in the neighborhoods surrounding the Saufley Landfill in Pensacola, Florida. The landfill had been burning for approximately 45 days.

3.0 SITE ACTIVITIES

On Monday, January 23, 2006 the EPA Region 4 phone-duty officer tasked EPA OSC Dave Dorian to respond to a request from the Florida Health Department to assist in monitoring the ambient air at a landfill fire located in Pensacola, Florida. The Saufley Landfill had been burning for approximately 45 days.

On Tuesday, January 24, 2006 START arrived on-site, OSCs Dave Dorian and Matt Huyser were already present. No smoke or flames were visible from the landfill. The landfill was smoldering underground, with an occasional hotspot surfacing. A wood burning smell, typical of campfires, was detectable. OSC Dorian tasked START to monitor the ambient air in the surrounding area for CO, H₂S, PM and VOCs (See Figure 3). The ambient air monitoring did not show any adverse concentrations, the monitoring results are presented in Table C-1 (Appendix C).

The ambient air concentrations of carbon monoxide (CO), hydrogen sulfide (H₂S), particulate matter (PM), and volatile organic compounds (VOCs) were monitored in the area directly surrounding the landfill at 25 locations and two locations on-site near the entrance to the landfill. In addition, ambient air sampling was conducted for asbestos in six locations. (See Figures 2 and 3) A Draeger (Model CMS) was used at monitoring locations 1-4, 24 and 25 to measure SO₂ concentrations. All measurements were below the Draeger CMS detection limit of 0.4 parts per million (ppm). The ambient air monitoring results are presented in Appendix C (Table C-1).

On Wednesday, January 25, 2006 OSC Dorian tasked START to conduct asbestos ambient air sampling at five locations surrounding the Saufley Landfill (See Figure 2). A pump failure at

location five resulted in only four locations providing viable samples. The asbestos samples were below detection levels (See Appendix D). In addition, START continued the ambient air monitoring for CO, H₂S, PM and VOCs in the area surrounding the facility.). The air monitoring did not show any adverse concentrations, the monitoring results are presented in Table C-1 (Appendix C).

On Thursday, January 26, 2006 OSC Dorian tasked START to conduct asbestos ambient air sampling at two locations (No. 24 and No. 25) directly inside the entrance to the Saufley Landfill (See Figure 2). The asbestos samples were below detection levels (See Appendix D). In addition, START continued the ambient air monitoring for CO, H₂S, PM and VOCs in the area surrounding the facility.). The ambient air monitoring did not show any adverse concentrations, the monitoring results are presented in Table C-1 (Appendix C).

4.0 EMERGENCY RESPONSE PROTOCOLS

4.1 MONITORING

The CO, H₂S and VOC concentrations were measured using a programmable multi-gas monitor (MultiRae, Model PGM-50). The PM concentrations were measured using a datalogging real-time aerosol monitor 4 (DataRam4, Model DR-400). The DataRam4 has an accuracy of $\pm 2\%$ of reading. A Draeger (Model CMS) was used to measure SO₂ concentrations. Calibration was conducted on monitoring equipment following manufacturer procedures.

The asbestos ambient air sampling followed the procedures outlined in the NIOSH Method 7402. The ambient air sampling utilized SKC Pumps (Model No 224-PCXR4) to draw air through 0.45 micrometer cassettes with an effective collection area of 385 mm². The lab followed TEM-AHERA analysis method to measure the amount of asbestos fibers (structures) in the sampling media.

4.2 PERSONAL PROTECTIVE EQUIPMENT

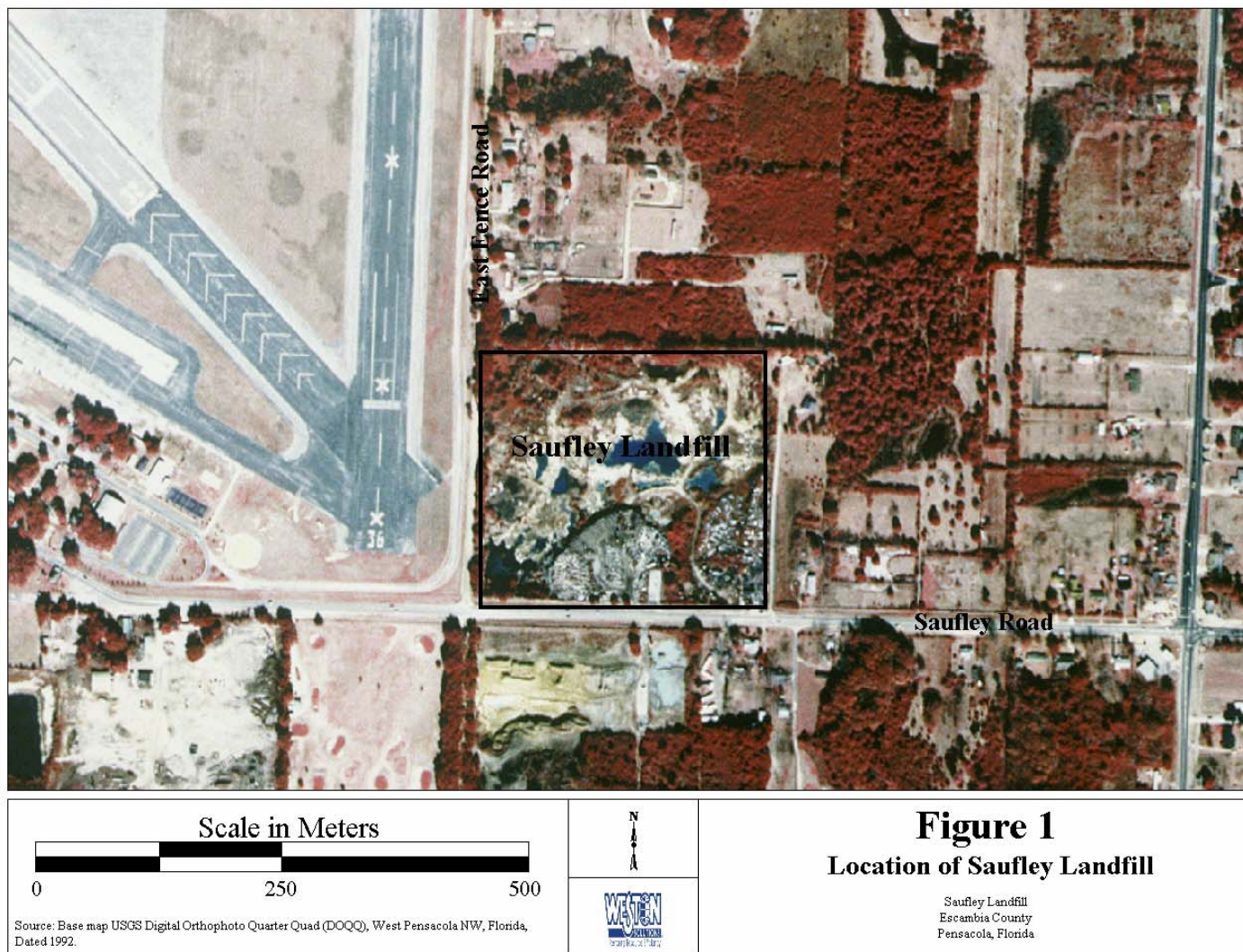
Level D personal protective equipment (PPE) was donned for air monitoring and sampling of the area surrounding the landfill and on-site. The on-site air monitoring and sampling was limited to just inside the entrance to the landfill. Air monitoring or sampling was not conducted on-site where active landfill operations were taking place.

5.0 CONCLUSION

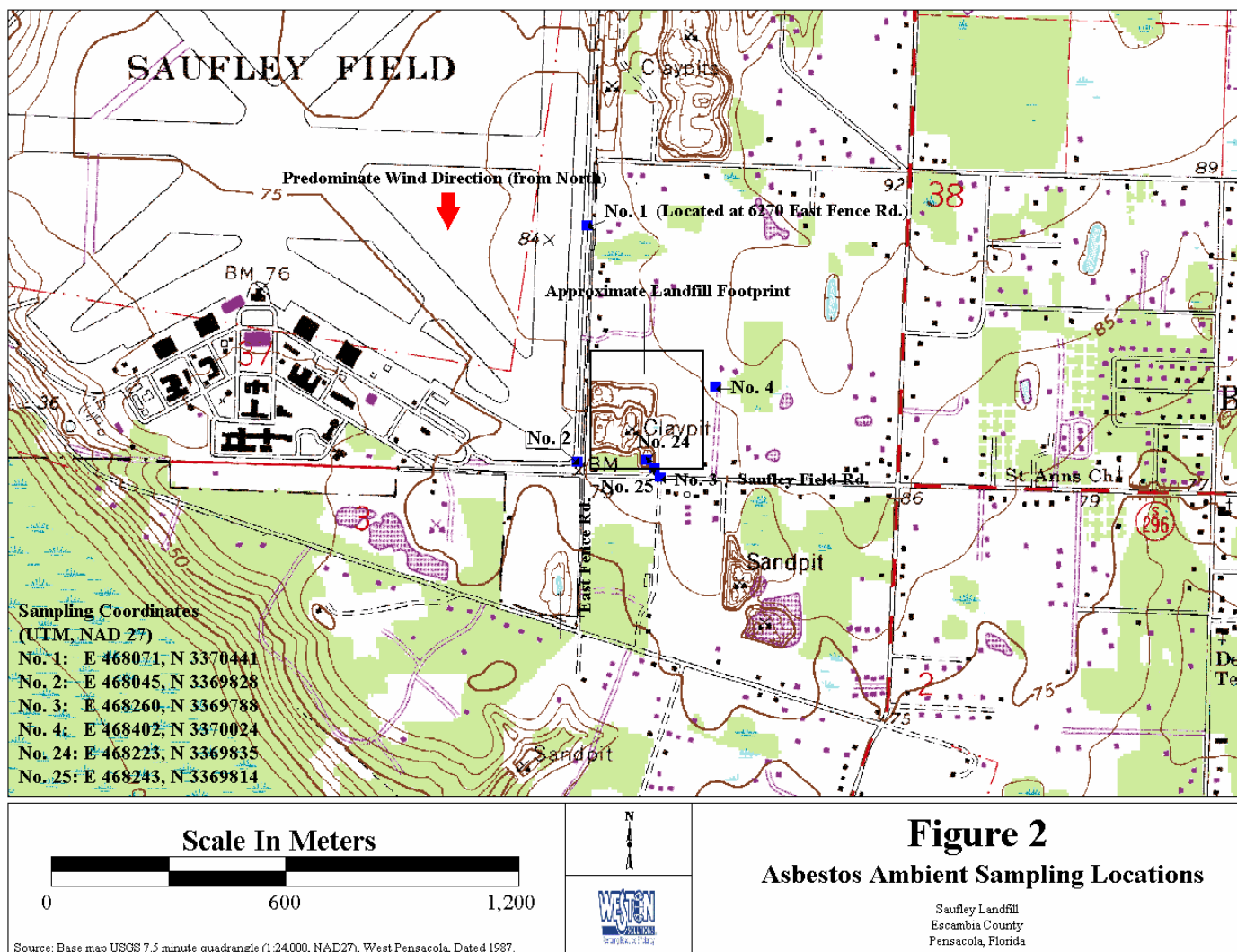
During the period of January 24-26, 2006 OSC Dave Dorian tasked START to conduct ambient air sampling and monitoring at the Saufley Landfill fire. No smoke or flames were visible from the landfill. The landfill was smoldering underground, with an occasional hotspot surfacing. START sampled for asbestos at four locations off-site and two locations on-site. All samples were below

detection level (See Appendix D). START monitored the ambient air surrounding the Saufley Landfill for CO, H₂S, PM and VOCs. The ambient air monitoring did not show any adverse concentrations, the monitoring results are presented in Table C-1 (Appendix C).

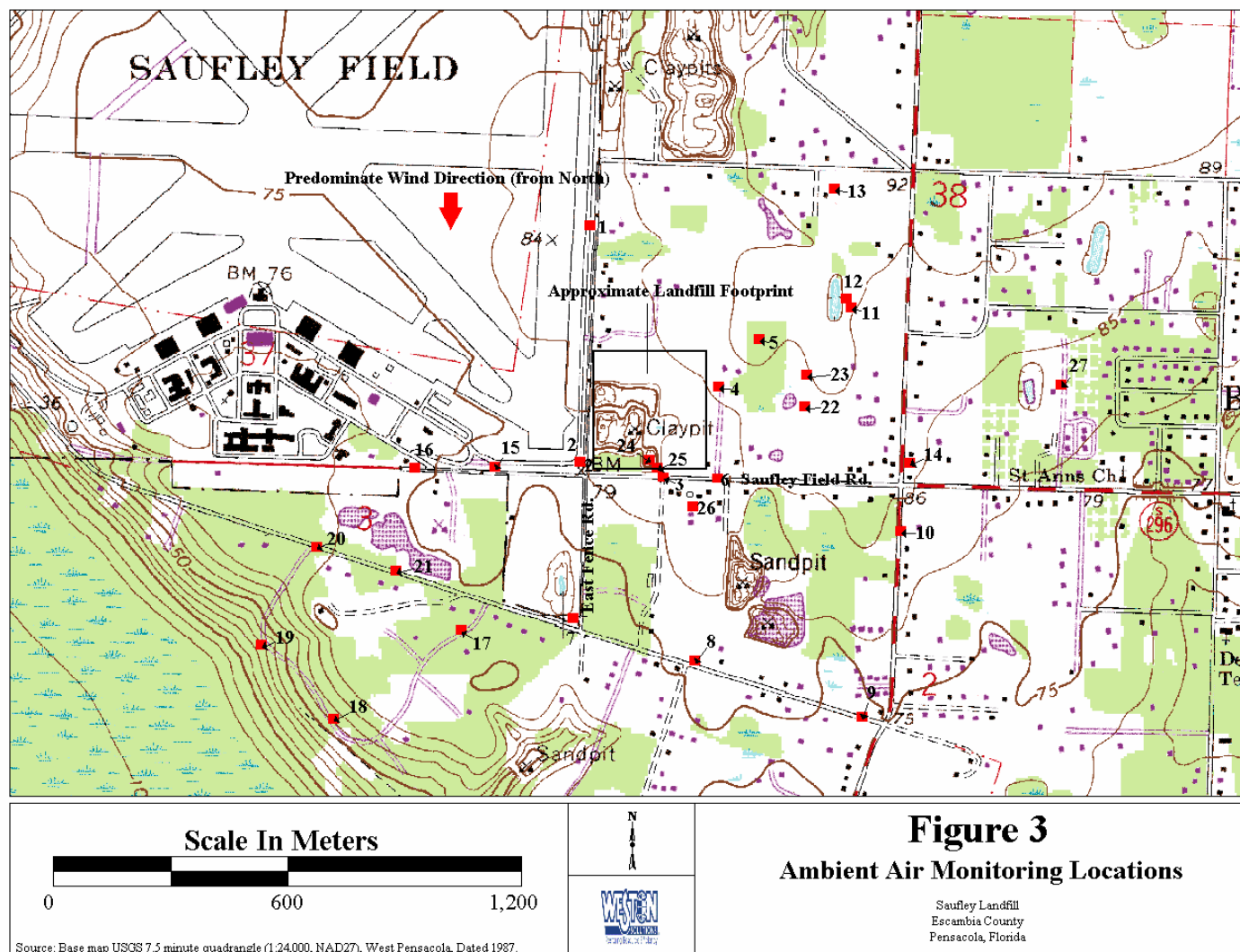
The emergency response was concluded on January 26, 2006. No further activities are planned for this response. Future actions will be at the direction of the EPA.



This document was prepared by Weston Solutions, Inc., expressly for EPA. It shall not be disclosed, in whole or in part, without the express written permission of EPA.



This document was prepared by Weston Solutions, Inc., expressly for EPA. It shall not be disclosed, in whole or in part, without the express written permission of EPA.



This document was prepared by Weston Solutions, Inc., expressly for EPA. It shall not be disclosed, in whole or in part, without the express written permission of EPA.

APPENDICES

APPENDIX A LOGBOOK NOTES

APPENDIX B

WESTON SITE-SPECIFIC HEALTH AND SAFETY PLAN

APPENDIX C AMBIENT AIR MONITORING RESULTS

Table C-1
 Ambient Air Monitoring Results
 EPA Region 4
 Sauflay Landfill
 Pensacola, Florida

Date	Time	Monitoring Location Number	Wind Direction	UTM Coordinates (NAD27)		Ambient Air Concentration			
				Easting	Northing	CO (ppm)	H ₂ S (ppm)	VOC (ppm)	PM ^a (µg/m ³)
1/24/2006	1545	1	NNW	468071	3370441	0	0	b	11.5
1/24/2006	1610	2	NNW	468045	3369828	0	0	b	10.0
1/24/2006	1630	3	NNW	468260	3369788	2	0	b	24.8
1/24/2006	1645	4	NNW	468402	3370024	0	0	b	21.3
1/24/2006	1705	5	NNW	468508	3370145	0	0	b	8.7
1/25/2006	0820	1	N	468071	3370441	0	0	0	10.2
1/25/2006	0930	5	N	468508	3370145	0	0	0	7.9
1/25/2006	0955	4	N	468402	3370024	0	0	0	7.4
1/25/2006	1122	1	N	468071	3370441	0	0	0	14.4
1/25/2006	1200	2	N	468045	3369828	0	0	0	7.2
1/25/2006	1249	3	N	468260	3369788	0	0	0	85.0
1/25/2006	1325	4	N	468402	3370024	0	0	0	7.0
1/25/2006	1425	6 ^f	N	468400	3369786	0	0	0	567
1/25/2006	1527	2	N	468045	3369828	0	0	0	9.1
1/25/2006	1534 ^c	7	N	468028	3369423	0	0	0	7.0
1/25/2006	1544 ^c	8	N	468340	3369312	0	0	0	13.1
1/25/2006	1600 ^c	9	N	468772	3369168	0	0	0	6.8
1/25/2006	1610 ^c	10	N	468874	3369649	0	0	0	16.4
1/25/2006	1620 ^c	11	N	468745	3370229	0	0	0	10.6
1/25/2006	1630 ^c	12	N	468732	3370250	0	0	0	5.3
1/25/2006	1641 ^c	13	N	468702	3370534	0	0	0	7.3
1/25/2006	1720 ^c	14	N	468895	3369827	0	0	0	7.1
1/25/2006	1731 ^c	15	N	467825	3369817	0	0	0	6.8
1/25/2006	1740 ^c	16	N	467619	3369813	0	0	0	5.9
1/25/2006	1749 ^c	17	N	467739	3369392	0	0	0	13.1
1/25/2006	1800 ^c	18	N	467409	3369162	0	0	0	6.4
1/25/2006	1810 ^c	19	N	467222	3369354	0	0	0	7.1
1/25/2006	1820 ^c	20	N	467364	3369607	0	0	0	5.4
1/25/2006	1837 ^c	21	N	467570	3369546	0	0	0	6.3
1/25/2006	1843 ^c	22	N	468626	3369972	0	0	0.1 ^d	7.1
1/25/2006	1850	23	N	468630	3370053	0	0	0.1 ^d	6.1
1/26/2006	0710	22	N	468626	3369972	0	0	0.3 ^d	11.3
1/26/2006	0810 ^c	23	N	468630	3370053	0	0	0	9.4
1/26/2006	0816	5	N	468508	3370145	0	0	0	7.0
1/26/2006	0900	24	N	468223	3369835	0	0	0	17.1
1/26/2006	0925	25	N	468243	3369814	0	0	0	8.4
1/26/2006	0955	1	N	468071	3370441	0	0	0	10.9
1/26/2006	1025	2	N	468045	3369828	0	0	0	15.3
1/26/2006	1042	26	N	468337	3369712	0	0	0.1 ^d	16.2
1/26/2006	1058	4	N	468402	3370024	0	0	0	14.9
1/26/2006	1200	3	N	468260	3369788	0	0	0	57.0
1/26/2006	1220	27 ^e	N	469288	3370029	0	0	0	5.8
1/25/2006	1245	22	N	468626	3369972	0	0	0	5.7
1/26/2006	1305	24	N	468223	3369835	0	0	0	34.8
1/26/2006	1330	25	N	468243	3369814	0	0	0	25.2
1/26/2006	1400	2	N	468045	3369828	0	0	0	8.7

Notes:

- a Concentration results are 15-minute TWA.
- b No VOC monitoring was conducted.
- c Particulate matter (PM) concentration 5-minute TWA.
- d Concentration results were possibly influenced by instrument drift. Calibration of the VOC sensor was conducted, subsequently the readings returned to zero.
- e Monitoring location behind Family Life Center in large open field. Measured ambient air concentrations for use as representative background level.
- f Monitoring location directly across the street from the landfill exit. The road had accumulated significant amount of dirt. Traffic would cause the dirt particles to become airborne, this dust directly influenced concentration results at this location.

written permission of EPA.

APPENDIX D TEM-AHERA ANALYTICAL DATA

Jan-30-2006 02:42pm From:WESTON SOLUTIONS INC

770-325-7950

T-351 P.004/005 F-730

EMSL Analytical, Inc

1770 The Exchange, Suite 135, Atlanta, GA 30339

Phone: (770) 956-9150 Fax: (770) 956-9181 Email: atlant@lab.emsl.com

EMSL

Attn: **Brant McCanless**
Weston Solutions
5430 Metric Place Ste. 100
Norcross, GA 30092

Customer ID: +00WEST
 Customer PO:
 Received: 01/27/06 9:30 AM
 EMSL Order: 070600322

Fax: (770) 325-7950 Phone: (770) 325-7906
 Project: 12587.001.009.0346.00/Sausley Road Landfill/FL

EMSL Proj:
 Analysis Date: 1/27/2006
 Report Date: 1/27/2006

Asbestos Fiber Analysis by Transmission Electron Microscopy (TEM) Performed by EPA 40 CFR Part 763 Final Rule (AHERA)

Sample	Volume (Liters)	Area Analyzed (mm ²)	Non Ash	Asbestos Type(s)	# Structures ≥ 0.5µ < 5µ ≥ 5µ	Analytical Sensitivity (S/cc)	Asbestos Concentration (S/mm ²)	(S/cc)	Notes
012506-ASB- LANDFILL01 070600322-0001	601.00	0.1300	0	None Detected		0.0049	<7.70	<0.0049	
012506-ASB- LANDFILL02 070600322-0002	563.00	0.1430	0	None Detected		0.0048	<7.00	<0.0048	
012506-ASB- LANDFILL03 070600322-0003	591.00	0.1430	0	None Detected		0.0046	<7.00	<0.0046	
012506-ASB- LANDFILL04 070600322-0004	514.00	0.1430	0	None Detected		0.0052	<7.00	<0.0052	
012506-ASB- LANDFILL05 070600322-0005	637.00	0.1300	0	None Detected		0.0048	<7.70	<0.0048	
012506-ASB- LANDFILL06 070600322-0006	601.00	0.1300	0	None Detected		0.0049	<7.70	<0.0049	
012506-ASB- FIELDBLANK01 070600322-0007	0.00			Not Analyzed					
012506-ASB- FIELDBLANK02 070600322-0008	0.00			Not Analyzed					

Analyst(s)

Woodley Benoit (B)



or other approved signatory

Disclaimer: The laboratory is not responsible for data reported in this report, which is dependent on volume collected by non-laboratory personnel. This lab is only responsible for data reported in structures/mm². This report may not be reproduced, except in full, without written approval by EMSL. This report must not be used to claim product endorsement by NVLAP or any agency of the U.S. Government. This report relates only to the samples reported above. Quality control data (including 95% confidence limits and laboratory and analysts' accuracy and precision) is available upon request. As per 40 CFR 763, the initial screening test may not be applied to samples with collected volumes of <1200 liters. Accredited for NVLAP PLM/TEM #101048-1

TEMAHERA-1

THIS IS THE LAST PAGE OF THE REPORT.

1

EPA USEPA Contract Laboratory Program
 Generic Chain of Custody Form

070600322

Reference Case: R

Region: 4 Project Code: 12587.001.009.0346.00 Account Code: CIRCLE ID: Spill ID: Site Name/State: Sausley Road Landfill/FL Project Leader: Barry Peterson Action: Expedited Response Action Sampling Co:		Date Shipped: 1/26/2006 Carrier Name: FedEx Airbill: 835628067413 Shipped to: ENSL Analytical, Inc. 1770 Tye Exchange Suite 135 Atlanta GA 30339 (770) 955-9160		Chain of Custody Record Retained By (Date / Time) 1. Barry Peterson 1/26/2006 2. [Signature] 1/26/2006 3. 4.		Sampled By (Date / Time) 1. [Signature] 1/26/2006 2. [Signature] 1/26/2006 3. 4.	
--	--	--	--	---	--	--	--

SAMPLE NO.	MATERIAL/ SAMPLER	CONC/ TYPE	ANALYSIS/ TURNOVER	PRESERVATIVE/ Bottle	TAG No./ LOCATION	STATION	SAMPLE COLLECT DATE/TIME	QC Type
012506-ASB-LANDFILL04	Ambient Air	IG	TEM (1) (Not preserved) (1)		012506-ASB-LANDFILL04S	1/26/2006	9:15	-
012506-ASB-LANDFILL05	Ambient Air/ Barry Peterson	IG	TEM (1) (Not preserved) (1)		012506-ASB-LANDFILL05S	1/26/2006	9:05	-
012506-ASB-LANDFILL06	Ambient Air/ Barry Peterson	IG	TEM (1) (Not preserved) (1)		012506-ASB-LANDFILL06S	1/26/2006	9:00	-
012506-ASB-LANDFILL07	Ambient Air/ Barry Peterson	IG	TEM (1) (Not preserved) (1)		012506-ASB-LANDFILL07S	1/26/2006	8:55	-
012506-FIELDBLANK01	Ambient Air/ Barry Peterson	IG	TEM (1) (Not preserved) (1)		012506-FIELDBLANK01S	1/26/2006	9:45	Trip Blank
012506-ASB-LANDFILL08	Ambient Air/ Barry Peterson	IG	TEM (1) (Not preserved) (1)		012506-ASB-LANDFILL08S	1/26/2006	9:05	-
012506-ASB-LANDFILL09	Ambient Air	IG	TEM (1) (Not preserved) (1)		012506-ASB-LANDFILL09S	1/26/2006	9:00	-
012506-FIELDBLANK02	Ambient Air/ Barry Peterson	IG	TEM (1) (Not preserved) (1)		012506-FIELDBLANK02S	1/26/2006	10:00	Trip Blank

Shipment for Case Complying with Analysis Key: TEM = TEM-AHIERA TR Number: 4-242892046-012606-0001	Sample(s) to be used for Laboratory QC: Additional Sample Signature(s): <i>Barry Peterson</i> Type/Designation: Composite = G, Grid = G	Chain of Custody Seal Number: Shipment Lead?
---	---	---

REGION COPY
 EPA/610/47 Page 1 of 1

APPENDIX E PHOTOGRAPH LOG

APPENDIX F TABLE OF WITNESSES

TABLE OF WITNESSES

Dave Dorian
Matt Huyser
Dean Ulloch
U.S. EPA Region IV
61 Forsyth Street
Atlanta, Georgia
(404) 562-9900

Brennon Vinet
President/CEO
Coastwide Disaster Relief & Recovery, LLC
5660 Sauflay Field Rd.
Pensacola, Florida 32526
(850) 456-4466

Barry Peterson
Weston Solutions, Inc. - START-2
4917 Waters Edge Drive, Suite 235
Raleigh, North Carolina
(919) 424-2200

Brant McCanless
Weston Solutions, Inc. - START-2
5430 Metric Place, Suite 100
Norcross, Georgia
770-325-7900