

**REMOVAL PROGRAM  
AFTER ACTION REPORT  
FOR THE  
CARVILL COMBING MILL SITE  
PLAINFIELD, WINDHAM COUNTY, CONNECTICUT  
20 SEPTEMBER 2004 THROUGH 24 JUNE 2005**

Prepared For:

U.S. Environmental Protection Agency  
Region I  
Emergency Planning and Response Branch  
One Congress Street, Suite 1100  
Boston, Massachusetts 02114-2023

CONTRACT NO. EP-W-05-042

TDD NO. 05-07-0015

TASK NO. 0013

DC NO. R-4330

Submitted By:

Weston Solutions, Inc.  
Superfund Technical Assessment and Response Team III  
240 Andover Street  
Wilmington, Massachusetts 01887

April 2006

## TABLE OF CONTENTS

	<u>Page</u>
LIST OF APPENDICES .....	iii
1.0 INTRODUCTION .....	1
2.0 SITE CONDITIONS AND BACKGROUND .....	1
2.1 Site Location and Description.....	1
2.2 Site History/Previous Actions.....	1
3.0 SUMMARY OF FEDERAL RESPONSE ACTIONS.....	4
3.1 Organization of the Response .....	4
3.2 Mobilization and Site Preparation .....	5
3.3 Chronology of Removal Activities .....	6
4.0 ESTIMATED COSTS OF THE REMOVAL ACTION.....	11

## **LIST OF APPENDICES**

Appendix A	Site Location Map (Figure 1)
Appendix B	Site Diagram (Figure 2)
Appendix C	Photodocumentation Log
Appendix D	Waste Disposal Table

## **1.0 INTRODUCTION**

The following report, entitled *Removal Program After Action Report for the Carvill Combing Mill Site, Plainfield, Windham County, Connecticut, 20 September 2004 through 24 June 2005*, is a chronological summary of the response actions taken by the U.S. Environmental Protection Agency (EPA), Region I, Emergency Planning and Response Branch (EPRB) to mitigate the hazards posed by conditions at the Carvill Combing Mill site. The report details the situation as it developed, actions taken, and resources committed.

Site activities conducted during the removal action included the following: establishing work zones; removing, sampling, overpacking, and staging drums and containers; sampling the underground storage tanks (UST) located within and adjacent to the mill building; reinforcing and/or demolishing the mill building to facilitate removal operations; conducting Class I asbestos-containing material (ACM) removal work; performing Class IV ACM removal work by loading out select demolition material as ACM-contaminated debris; collecting debris pile and drainage flume sediment samples; removing the debris piles and drainage flume sediments; conducting perimeter and personal air sampling for asbestos; suppressing dust; and demobilizing all personnel and equipment upon completion of removal activities.

## **2.0 SITE CONDITIONS AND BACKGROUND**

### **2.1 Site Location and Description**

The Carvill Combing Mill site (the site) is located at 63 Brunswick Avenue in the town of Plainfield, Windham County, Connecticut [see Appendix A – Site Location Map (Figure 1)]. Geographic coordinates of the site are 41° 43' 01" north latitude and 71° 51' 39" west longitude. The site consists of an abandoned two-story (with basement) brick building on a 0.4-acre parcel. The site is bordered to the north and west by the Moosup River; to the west by a public foot trail owned by the State of Connecticut, and by private residences; and to the south by Wagar Associates, Inc., and Brunswick Avenue Extension [see Appendix B – Site Diagram (Figure 2)].

### **2.2 Site History/Previous Actions**

The Site is a former textile mill abandoned in the late 1970s. The property consists of an abandoned two-story building and one 20,000-gallon UST containing several hundred gallons of unknown liquid.

Connecticut Department of Environmental Protection (CT DEP) reported that during the late 1960s through the early 1970s, a series of three lagoons located south of the site received wool scouring wastewater from site operations. The lagoons are located 100 feet west of several private drinking water wells, and 20 feet east of the bank of the Moosup River, a Class A river. The lagoons were later determined to be under different ownership and were investigated separately.

During the late 1960s through the early 1970s, several lagoons, located to the south of the site, were used to store wastewater from site operations. Prior to 1968, wastes were directly discharged into the



Moosup River. In 1995, Summit Hydropower Inc., leased the site from the Glenns Fall Realty Partnership, and used the lagoons to store dredged river sediment from the Moosup River, as well as wastewater from the UST.

On 24 August 1995, CT DEP personnel collected samples from the lagoon. Sample results indicated the presence of nonyl-phenol at a concentration of 3,000 parts per million (ppm). CT DEP officials contacted EPA and requested assistance investigating contaminants at the site. EPA requested site access from the current property owner, Dan Cadle, but access was denied. The site had been purchased by Mr. Cadle of The Cadle Company on 30 June 1995.

On 26 December 2000, EPA issued an Administrative Order for Property Access. On 14 December 2000, an access agreement was signed by Mr. George Scarveles. On 4 January 2001, EPA was contacted by Mr. Scarveles of the Old Village Mill, LLC (OVM), who had purchased the site from Mr. Cadle.

On 25 January 2001, Mr. Scarveles requested a meeting with EPA On-Scene Coordinator (OSC) Janis Tsang, EPA Enforcement Coordinator Tina Hennessy, EPA Attorney John Beling, CT DEP Representative Donald Burton, First Selectman for the Town of Plainfield Paul Sweet, Town Planner Jason Vincent, Town Engineer Michael Lavallee, Town Attorney Michael Satti of Satti & Ryan, Tax Collector Lynne Beansoliel, Summit Hydropower representatives Duncan Brotach and Rick Mackowiak, and OVM Attorney Katherine Goodbody. It was determined that the lagoons were not being transferred to Mr. Scarveles and would be investigated separately. Mr. Scarveles agreed to perform a Preliminary Assessment/Site Investigation (PA/SI) on the site and to provide a draft work plan to EPA by 6 April 2001.

OVM hired Aaron Environmental to conduct the Phase I PA/SI activities with an EPA-requested deliverable date of 19 July 2001. Subsequently, EPA made several written inquiries to OVM regarding the status of the Phase I PA/SI but received no responses. After EPA gave notice of its withdrawal to OVM for the voluntary cleanup, OVM agreed to provide the Phase I report with a revised due date of 28 September 2001. When the deliverable date was not met, EPA rescinded its offer for a PRP-lead PA/SI.

On 16 January 2001 and in October 2001, EPA and Weston Solutions, Inc. (WESTON), Superfund Technical Assessment and Response Team (START) conducted PA/SI activities at the site and noted the following:

- One 55-gallon steel drum and several miscellaneous-sized containers were observed in the basement of the mill. Close inspection of the drum/container and the remainder of the building was not conducted due to the poor structural integrity of the building.
- One 20,000-gallon UST was identified on the west bank of the Moosup River near the mill. One oil sample was collected and analyzed for oil identification, flash point, and polychlorinated biphenyls (PCBs). The sample results indicated that PCBs were not detected and confirmed the oil was Number (No.) 6 fuel oil.
- EPA did not conduct asbestos sampling because OVM's consultant, Aaron Environmental,

performed an asbestos survey and reported the results in the report entitled, *Supplemental Environmental Site Assessment Report* prepared by Aaron Environmental dated 18 October 2001. ACM was observed in the thermal insulating material on the boiler and heating system, ceiling panels, floor tiles, window glazing, and in an electric cable inside the building, and in shingles, tar, and paper roofing on the exterior of the building and was reported as follows:

- Chrysotile asbestos at levels ranging from <1% to 70%.
  - Amosite asbestos at levels ranging from 15% to 25%.
  - Crocidolite asbestos at levels of 5%.
- 
- There were no physical barriers, including windows, doors, or fences, to restrict public access to the mill.
  - Two residences and a small business were located adjacent to the site.
  - Evidence of public trespassing, including discarded food and beverage containers, and other domestic garbage, was observed in and around the mill building.
  - Two surface soil samples were collected from the drainage flume located in the basement of the mill for polynuclear aromatic hydrocarbon (PAH) field screening. The surface soil samples were sent to EPA New England Regional Laboratory (NERL) for semivolatile organic compounds (SVOCs), PCBs/pesticide, and heavy metals analyses.
  - One surface soil sample was found to contain lead at a concentration of 1,400 ppm.
  - One surface soil sample was found to contain total PAHs at a concentration of 51.6 ppm.

ACM was the primary contaminant identified in the mill building to date, along with PAHs that were detected in samples collected from the drainage flume in the basement.

From November 2002 to April 2003, correspondence received from the Potentially Responsible Party (PRP) indicated that they were financially and technically incapable of performing the cleanup. On 9 April 2003, START, WESTON structural engineers, the Emergency Rapid Response Services (ERRS) Response Manager, and OSCs Tsang and Dan Wainberg met on site to discuss the removal scope of work.

On 11 August 2003, EPA conducted a site visit with CT DEP, Connecticut Department of Public Health (CT DPH), and WESTON Structural Engineers to orient the CT DPH to the site conditions and to discuss EPA's proposed approach to the project. Attendees also met with the property owner, OVM, as well as their consultants, to discuss the project approach at the neighboring Brunswick Mill site, located in Plainfield, Connecticut.

From 19 August to 21 August 2003, EPA, START, and WESTON engineers conducted a topographic survey of the site and the neighboring Brunswick Mill site. On 21 August 2003, the abutter verbally rescinded permission to access his property. On 11 September 2003, START completed the topographic survey after EPA received access permission from the abutter.

On 20 November 2003, START and WESTON structural engineers conducted a site visit to reconfirm site conditions relative to design development. The visit also included a limited inspection of the building interior, flume, and culvert; a dye test of a drain line; and a survey of specific elevations along the building perimeter.

The Acting Director of the Office of Site Remediation and Restoration (OSRR) approved the Action Memorandum Addendum, dated 10 November 2003, by authorizing a ceiling increase and a change of scope of work to include relocation of an adjacent small business. EPA initiated the coordination of the relocation of an adjacent small business through the U.S. Army Corps of Engineers (US ACE) Real Estate Division immediately upon the approval of the 10 November 2003 Action Memorandum Addendum.

On 16 March 2004, the OSRR Director approved the Request for Ceiling Increase and a 12-month Emergency Exemption to the Action Memorandum to allow for continued removal activities at the site.

### 3.0 **SUMMARY OF FEDERAL RESPONSE ACTIONS**

#### 3.1 **Organization of the Response**

<b>ORGANIZATION OF THE RESPONSE</b>		
<b>Organization</b>	<b>Representatives</b>	<b>Responsibilities</b>
U.S. Environmental Protection Agency (EPA) Emergency Planning and Response Branch (EPRB) One Congress Street, Suite 1100 Boston, MA 02114-2023 (617) 918-1231 (617) 918-1283	Janis Tsang Dan Wainberg	EPA On-Scene Coordinators (OSCs) responsible for the initiation, oversight, and completion of all removal activities. The OSCs provided project updates for neighboring residents and reporters, and coordinated with state and local officials.
U.S. Army Corps of Engineers Real Estate Division	Peg Lorenzo	U.S. Army Corps of Engineers representative that provided assistance with abutting business relocation.
Weston Solutions, Inc., Superfund Technical Assessment and Response Team (START) 240 Andover Street Wilmington, MA 01887 (978) 657-5400	Sheila Wilkinson Wayne Brown Sean Dunn Dan Muzrall	START Site Leaders (SLs) responsible for providing the OSC with technical assistance, air monitoring, sampling support, site documentation, photodocumentation of site conditions, site health and safety oversight, and draft and final report preparation.
Shaw Environmental & Infrastructure, Inc. Emergency Rapid Response Services (ERRS) 88C Elm Street Hopkinton, MA 01748-1656 (508) 435-9561	Joe Overend	Response Manager (RM) for the ERRS contractor that performed the removal activities.

ORGANIZATION OF THE RESPONSE		
Organization	Representatives	Responsibilities
Shaw Environmental & Infrastructure, Inc. ERRS 88C Elm Street Hopkinton, MA 01748-1656 (508) 435-9561	Gary Benham	Transportation and Disposal (T&D) Coordinator for the ERRS contractor responsible for coordinating the transportation and disposal of all waste from site.
Mill City Environmental 116 John Street Lowell, MA 01852 (978) 654-6741	Joseph Norton	ERRS subcontractor that performed demolition, transportation, and disposal activities.
S&R Corporation 706 Broadway Street Lowell, MA 01854	Thomas Guerette	Subcontractor to Mill City Environmental that performed demolition activities at the site.

### 3.2 Mobilization and Site Preparation

The site-specific removal health and safety plan (HASP) was reviewed and signed by site personnel before any site work commenced. In addition, emergency telephone numbers and directions to the hospital were posted, and site work zones were delineated. All site activities were performed in appropriate personal protective equipment (PPE) in accordance with the HASP. The site HASP was prepared by START personnel as a separate document, entitled *Health and Safety Plan for the Carvill Combing Mill Site, Plainfield, Windham County, Connecticut*. On 25 October 2004, the mobilization and staging of Shaw Environmental & Infrastructure (SHAW) Emergency Rapid Response Services (ERRS) equipment was initiated.

Site preparation activities conducted by ERRS personnel consisted of clearing and grubbing the work zone and command post areas, improving the existing truck access road, and constructing a truck turnaround and staging area on the site.

Site preparation activities conducted by EPA/Weston consisted of video-documenting the property and the interior of the adjacent small business prior to their relocation.

On September 10, 2004, EPA completed the relocation of the adjacent small business with the assistance of the U.S. Army Corps of Engineers. This was performed to minimize the impact to the business and their employees and allow for a safer and better controlled demolition area.

### **3.3 Chronology of Removal Activities**

#### **Week ending Friday, 24 September 2004**

On 20 September 2004, OSC Tsang, ERRS Response Manager (RM) Joe Overend and Transportation and Disposal (T&D) Coordinator Gary Benham, START member Bonnie Mace, Weston Professional Engineer (PE) Lee Baronas, ERRS subcontractor Mill City Environmental (MCE) representative Joseph Norton, and MCE subcontractor Tom Guerette of S&R Corporation (S&R) arrived on site to conduct a pre-construction meeting and to discuss removal activities.

CT DEP subcontractor Kropp Environmental was on site to remove the exterior UST at the request of OSC Tsang.

#### **Week ending Friday, 29 October 2004**

On 25 October 2004, OSC Tsang conducted a site walk with START Site Leader (SL) Sheila Wilkinson, ERRS RM Overend and T&D Coordinator Benham. Topics discussed included the removal action, the work plan, activities conducted to date by CT DEP's contractor, staging of hazardous materials, and T&D of hazardous waste. A preliminary walk-through of the facility was conducted to assess the activities which still needed to be performed. SL Wilkinson photodocumented site conditions for the remainder of site activities (see Appendix C – Photodocumentation Log).

Upon mobilization, asbestos perimeter air monitoring was conducted and removal of the exterior asbestos, including window glazing, was completed. SL Wilkinson calibrated the air monitoring equipment daily for the duration of the removal activities.

On 26 October 2004, EPA Section Chief David McIntyre, and CT DEP representative Matt Williamson arrived on site to discuss upcoming removal activities with OSC Tsang and RM Overend.

From 27 October 2004 through 3 December 2004, one 20-cubic yard roll-off container of non-friable asbestos and 29 loads of ACM-containing demolition debris, totaling 786.16 tons, were transported to Minerva Enterprises, Inc. in Wayneburg, Ohio for disposal (see Appendix D – Waste Disposal Table).

#### **Week ending Friday, 5 November 2004**

On 3 November 2004, OSC Tsang, RM Overend, and SL Wilkinson mobilized to the site. MCE personnel were on site in preparation for demolition activities.

Site activities for the week included establishing work zones and erosion control measures; constructing a fence around the sluice gate controls; and mobilizing the excavator and the crane for demolition activities

START SL Wilkinson discussed particulate monitoring and asbestos air sampling locations with

OSC Tsang and deployed personal DataRAMs (pDRs) for particulate monitoring and low-flow pumps with 0.8 micrometer ( $\mu\text{m}$ ) methylcellulose ester (MCE) cartridges for asbestos air sampling activities at upwind and downwind locations along the perimeter of the site. Air monitoring and sampling activities would be conducted each day with sampling locations determined by the OSC.

On 4 November 2004, S&R was on site to begin demolition activities. However, demolition activities were postponed because the crane was not delivered until 8 November 2004. According to the site work plan, the crane has to be on site to initiate demolition activities.

#### **Week ending Saturday, 13 November 2004**

On 8 November 2004, OSC Tsang, RM Overend, and SL Wilkinson mobilized to the site. MCE and S&R personnel were on site in preparation for demolition activities.

Site activities for the week included establishing work zones and erosion control measures; constructing a fence around the sluice gate controls; and mobilizing the excavator and the crane for demolition activities.

On 9 November 2004, demolition activities began.

On 10 November 2004, WESTON Manchester (MNH) engineer Lee Baronas arrived on site to meet with OSC Tsang and to review the progress of the demolition activities.

On 11 November 2004, START member Sean Dunn arrived on site and assumed SL responsibilities for the remainder of the week.

On 13 November 2004, S&R completed demolition activities and began debris segregation for load-out activities.

From 11 November 2004 through 9 December 2004, seven roll-off containers of washed steel were transported to Metals Recycling in Johnston, Rhode Island for recycling.

#### **Week ending Friday, 19 November 2004**

On 15 November 2004, OSC Tsang, RM Overend, and START member Wayne Brown mobilized to the site. START member Brown assumed SL responsibilities for the week. MCE personnel were on site to supervise S&R who performed debris segregation and load-out activities.

On 18 November 2004, START member Brown conducted a bid walk with Steve Olavson of PAL to facilitate preparation for a historical preservation survey. Following the bid walk, START member Brown collected three soil samples from the building footprint and field screened the samples for metals using the Innov-X<sup>®</sup> X-Ray Fluorescence analyzer (XRF). No elevated levels of heavy metals were detected in the samples.

On 19 November 2004, CT DEP representatives Williamson and Michael McDaniel were on site to observe site activities. Summit Hydropower representative Ben Vincent arrived on site to discuss

the status of the turbines located on the Brunswick Mill site with OSC Tsang and RM Overend.

On 22 November 2004, S&R installed six drainage holes in the western wall of the building foundation.

#### **Week ending Friday, 26 November 2004**

On 22 November 2004, OSC Tsang, RM Overend, and SL Wilkinson mobilized to the site. MCE personnel were on site to supervise S&R who performed debris segregation and load-out activities.

On 23 November 2004, all personnel demobilized from the site as no load-out activities were scheduled for the remainder of the week. Site activities were scheduled to resume on 29 November 2004.

#### **Week ending Saturday, 4 December 2004**

On 29 November 2004, OSC Tsang, RM Overend, and START member Brown mobilized to the site. START member Brown assumed SL responsibilities for the week. MCE personnel were on site to supervise S&R who performed debris segregation, load-out, and backfilling activities.

On 29 November 2004, S&R uncovered a septic tank between the mill building foundation and the abutter's property.

From 30 November 2004 through 7 December 2004, 19 truckloads of brick (approximately 18 cubic yards per truckload) were transported to American Brick in Bloomfield, CT for recycling.

On 1 December 2004, WESTON MNH Engineer Baronas mobilized to the site to inspect the condition of the uncovered septic tank. The investigation determined that the septic tank served the Carvill Combing Mill building and that it should be decommissioned.

On 4 December 2004, START member Brown collected three soil samples from the building footprint and field screened the samples for metals analysis via XRF. No elevated levels of heavy metals were detected.

#### **Week ending Friday, 10 December 2004**

On 6 December 2004, OSC Tsang, RM Overend, and SL Wilkinson mobilized to the site. MCE personnel were on site to supervise S&R who performed debris segregation, load-out, and backfilling activities. Due to the completion of demolition activities and the non-detect analytical results for asbestos fibers, daily particulate monitoring and air sampling activities were discontinued at the request of the OSC.

From 6 December 2004 through 10 December 2004, S&R backfilled and graded the foundation of the mill building and installed cinderblocks in the former window openings along the building's foundation.

On 7 December 2004, MCE subcontractor, C&J Portables, was on site to pump 600 gallons of liquid from the septic tank. Subsequently, S&R decommissioned the septic tank.

On 8 December 2004, Mr. Scarveles, the property owner, and his nephew Ed Thomas visited the site to observe site activities.

#### **Week ending Friday, 17 December 2004**

On 13 December 2004, OSC Tsang, RM Overend, and SL Wilkinson mobilized to the site. MCE personnel were on site to supervise S&R who performed debris segregation, load-out, and backfilling activities.

From 13 December 2004 through 17 December 2004, MCE subcontractor, Westboro Fence Company, installed a permanent security fence along the perimeter of the mill building foundation.

On 14 December 2004, Peg Lorenzo of USACE and the owner of the abutting building, Wagar Associates, visited the site to inspect the site prior to the winter demobilization.

On 16 December 2004, OSC Tsang, RM Overend, and SL Wilkinson conducted a post-demolition site walk with CT DPH representatives Stephen Dahlem and Matt Williamson.

#### **Week ending Friday, 24 December 2004**

On 23 December 2004, SL Wilkinson mobilized to site to conduct a post-demobilization follow-up inspection to ensure the site was secured for the winter months and that the signs had been posted along the security fence.

All personnel demobilized from the site, and no site activities occurred between 24 December 2004 and 22 April 2005.

#### **Week ending Friday, 22 April 2005**

Prior to remobilizing, Public Archaeology Survey Team Inc. of Storrs, CT, subcontractor to START, completed historical and photographic documentation at the Glen Falls Worsted Mill (also known as Brunswick Mill and Carvill Mill complex). The photographic and historical documentation was required by the Connecticut State Historic Preservation Office (SHPO). On 22 April 2005, the report entitled, *Historical and Photographic Documentation Glen Falls Worsted Mill (Brunswick Mill/Carvill Mill)*, dated April 2005, was delivered to OSC Tsang.

On 19 April 2005, RM Overend, MCE, and SL Wilkinson arrived on site to review and discuss the remaining tasks for final site restoration activities. Following the meeting, all personnel demobilized from the site.

#### **Week ending Friday, 20 May 2005**

On 16 May 2005, OSC Allen Jarrell, RM Overend, and START member Sean Dunn mobilized to the



site. OSC Jarrell monitored on-site activities while OSC Tsang attended Incident Command System (ICS) training in Edison, NJ. START member Dunn assumed SL responsibilities for the week.

From 16 May 2005 to 20 May 2005, MCE conducted restoration activities including re-paving the abutter's driveway; installing a drainage swale east of the foundation; and regrading, adding topsoil, and hydroseeding areas disturbed during the removal action.

On 18 May 2005, OSC Jarrell, ERRS RM Overend, and CT DEP representative Williamson met to review the current site activities and inspect the suspected asbestos-containing roofing shingles and debris that was partially buried in a hill and embedded around exposed tree roots. The area containing the debris was estimated to be 65 feet by 14 feet, and was located along the base and bank of the hill and stone ledge to the north of the Carvill Mill Building.

OSC Jarrell and RM Overend informed OSC Tsang of the recently discovered suspected asbestos-containing roofing shingles and debris. OSC Jarrell collected and sent a sample of the debris to the EPA Office of Environmental Management and Evaluation (OEME) New England Regional Laboratory (NERL) for asbestos analysis. The sampling result confirmed that the debris contained 2% to 3% asbestos.

On 18 May 2005, OSC Jarrell and RM Overend conducted a post-restoration site walk with Peter Baldes of Wagar Associates. Mr. Baldes agreed that the site restoration work was complete at his property.

On 19 May 2005, MCE shipped four bags of non-friable asbestos debris to the E.Q. Landfill located in Belleville, Michigan for disposal.

#### **Week ending Friday, 10 June 2005**

On 6 June 2005, OSC Tsang, RM Overend, and START member Dan Muzrall mobilized to the site. START member Muzrall assumed SL responsibilities for the remainder of site activities.

From 6 June 2005 to 24 June 2005, Fleet Environmental (Fleet) mobilized to the site and established silt fence and hay bales along the riverbank and the perimeter of the work area; erected a construction fence around the work area; conducted clearing and grubbing in the area where asbestos-containing roofing materials were found; removed asbestos-containing roofing debris and soil from the slope and base of the embankment; shipped two roll-off containers of ACM debris to Turnkey Landfill, in Rochester, New Hampshire for disposal; conducted personal and perimeter air monitoring for asbestos; and regraded and seeded areas disturbed by removal activities.

#### **Week ending Friday, 17 June 2005**

On 13 June 2005, OSC Tsang, RM Overend, and START member Muzrall mobilized to the site.

Site activities for the week included continuing the removal of asbestos-containing roofing debris and soil from the slope and base of the embankment; shipping two roll-off containers of ACM debris to Turnkey Landfill for disposal; conducting personal and perimeter air monitoring for asbestos; and

re-grading and seeding areas disturbed by removal activities.

#### **Week ending Friday, 24 June 2005**

On 20 June 2005, OSC Tsang and RM Overend mobilized to the site.

On 21 June 2005, CT DEP representative Jeff Chandler was on site to review the current site activities with RM Overend and Fleet personnel.

On 23 June 2005, RM Overend, and OSCs Tsang and Jarrell met on site with Plainfield Department of Public Works (DPW) representative Stan Parosk, and First Selectman, Donald Gladdings to conduct a final site walk and to discuss post-removal site security issues. Mr. Parosk and Mr. Gladdings agreed that the site and its restored embankment would be more attractive to all terrain vehicles (ATVs) and requested that the Jersey Barriers currently located at the base of the ledge be removed to protect the town's liability. Mr. Gladdings indicated that he would coordinate with the Police Chief to have a police officer available to monitor the site and discourage trespassing.

On 27 June 2005, all personnel demobilized from the site and removal activities were completed.

#### **4.0 ESTIMATED COSTS OF THE REMOVAL ACTION**

EPA resources committed under this Removal Action, conducted from 20 September 2004 through 24 June 2005, are summarized below.

	<i><b>Ceiling</b></i>	<i><b>Estimated Expenditure</b></i>	<i><b>Balance</b></i>
<b>ERRS</b>	\$650,000	\$595,000	\$55,000
<b>START</b>	\$210,000	\$191,225	\$18,775
<b>Contingency</b>	\$110,000	\$40,000	\$70,000
<b>Total<sup>1</sup></b>	<b>\$970,000</b>	<b>\$826,225</b>	<b>\$143,775</b>

The accounting of expenditures is an estimate based on figures known to the OSC at the time this report was written. The cost accounting provided in this report does not necessarily represent an exact monetary figure which the government may include in any claim for cost recovery.

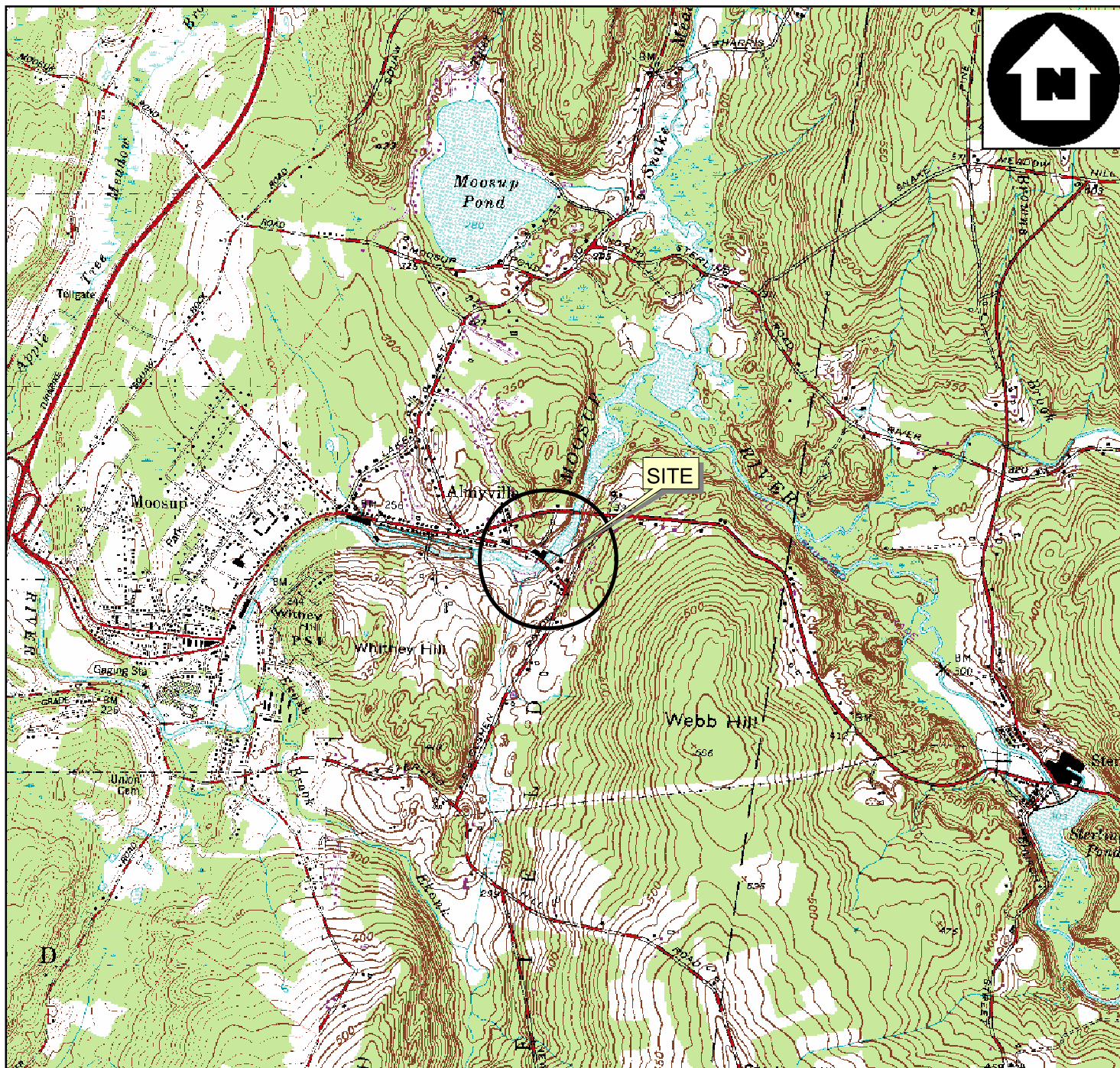
---

<sup>1</sup> Approximate amount used for cost recovery purposes will be actual costs; for example, \$300,000 x 27.2% (current indirect rate).

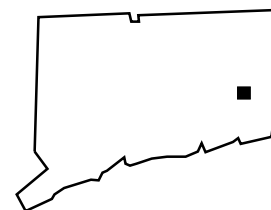
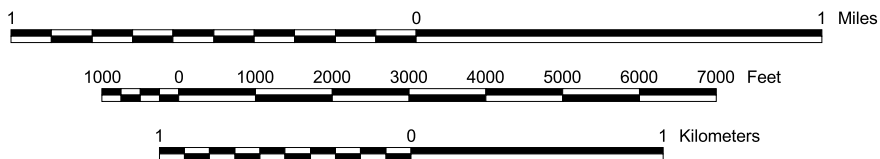
## Appendices

## Appendix A

Site Location Map (Figure 1)



BASE MAP IS A PORTION OF THE FOLLOWING 7.5 X 15' U.S.G.S. QUADRANGLE(S):  
PLAINFIELD AND ONECO, CT. 1987.



QUADRANGLE LOCATION

### SITE LOCATION MAP

CARVILL COMBING MILL  
63 BRUNSWICK AVENUE  
PLAINFIELD, CONNECTICUT

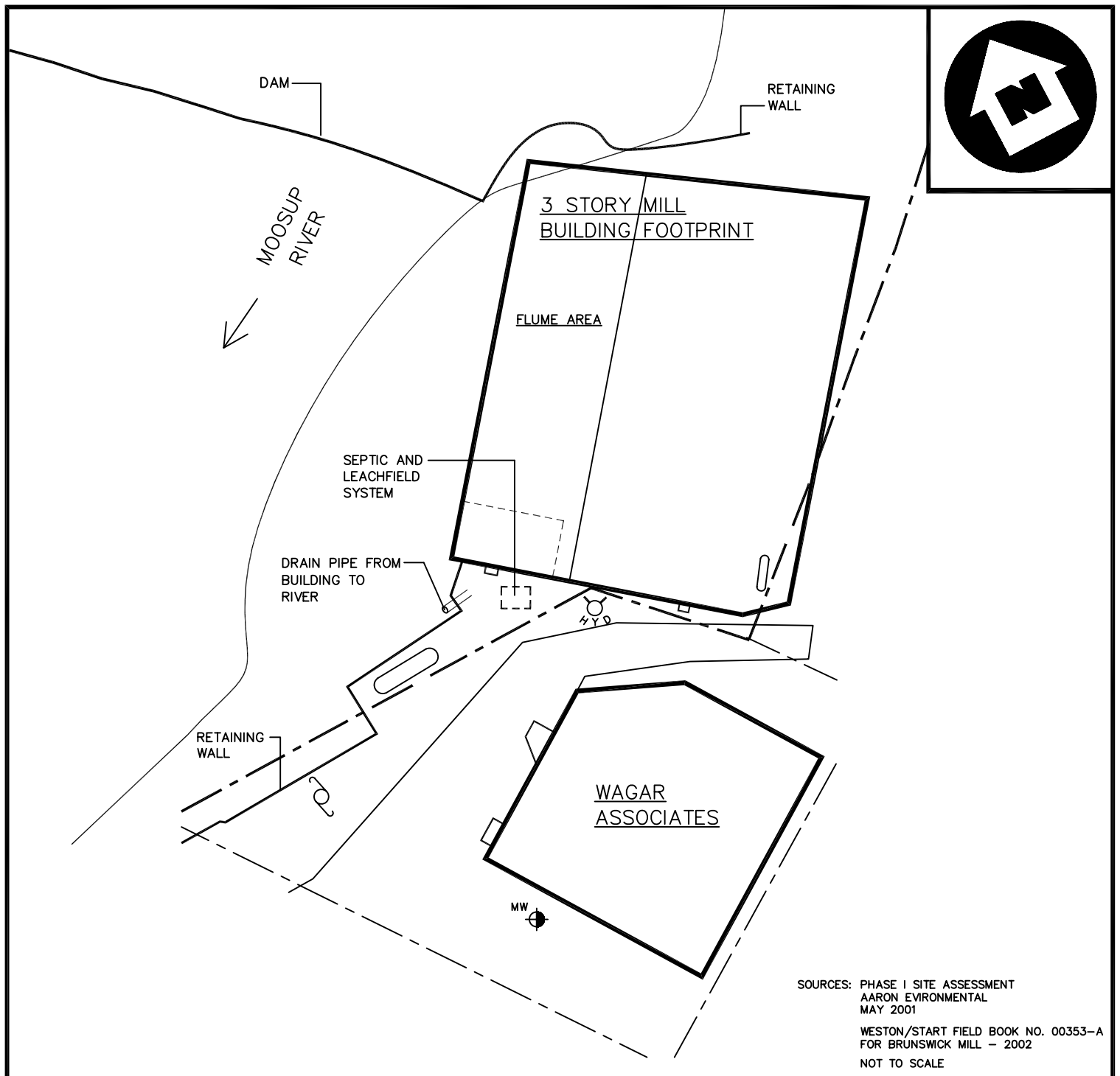


REGION I SUPERFUND TECHNICAL ASSESSMENT AND RESPONSE TEAM

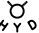
TDD #	DRAWN BY:	DATE:
05-07-0015	A.THOMPSON	9/27/2005
FILE NAME: E:\ARC_APRS\START2\CARVILL.APR		FIGURE 1

## Appendix B

Site Diagram (Figure 2)



### LEGEND

 FIRE HYDRANT

 MONITORING WELL  
(SCREENED INTERVAL UNKNOWN)

 UTILITY POLE

 PROPERTY LINE

 UNDERGROUND STORAGE TANK

## SITE DIAGRAM

CARVILL COMBING MILL  
63 BRUNSWICK AVENUE EXTENSION  
PLAINFIELD, CONNECTICUT



REGION I SUPERFUND TECHNICAL ASSESSMENT AND RESPONSE TEAM

TDD #  
05-07-0015

DRAWN BY:  
A.THOMPSON

DATE  
9/27/05

FILE NAME:  
R:\05070015\FIG2revised.DWG

FIGURE 2

## Appendix C

### Photodocumentation Log



**PHOTOGRAPHY LOG SHEET**  
**Carvill Combing Mill Site • Plainfield, Connecticut**



**SCENE:** View of the Carvill Combing Mill building. Photograph taken facing northeast.

**DATE:** 11 August 2003

**PHOTOGRAPHY BY:** A. Benoit

**TIME:** 1348 hours

**CAMERA:** Nikon CoolPix 3100



**SCENE:** View of the Carvill Combing Mill building. Photograph taken facing northeast.

**DATE:** 11 August 2003

**PHOTOGRAPHY BY:** A. Benoit

**TIME:** 1348 hours

**CAMERA:** Nikon CoolPix 3100



**PHOTOGRAPHY LOG SHEET**  
**Carvill Combing Mill Site • Plainfield, Connecticut**



**SCENE:** View of the Carvill Combing Mill building. Photograph taken facing east.

**DATE:** 11 August 2003

**PHOTOGRAPHY BY:** A. Benoit

**TIME:** 1348 hours

**CAMERA:** Nikon CoolPix 3100



**SCENE:** View of the Carvill Combing Mill building. Photograph taken facing northwest

**DATE:** 11 August 2003

**PHOTOGRAPHY BY:** A. Benoit

**TIME:** 1403 hours

**CAMERA:** Nikon CoolPix 3100

**PHOTOGRAPHY LOG SHEET**  
**Carvill Combing Mill Site • Plainfield, Connecticut**



**SCENE:** View of the Carvill Combing Mill building. Photograph taken facing northwest.

**DATE:** 11 August 2003

**PHOTOGRAPHY BY:** A. Benoit

**TIME:** 1403 hours

**CAMERA:** Nikon CoolPix 3100



**SCENE:** View of the Carvill Combing Mill building. Photograph taken facing north.

**DATE:** 11 August 2003

**PHOTOGRAPHY BY:** A. Benoit

**TIME:** 1403 hours

**CAMERA:** Nikon CoolPix 3100



**PHOTOGRAPHY LOG SHEET**  
**Carvill Combing Mill Site • Plainfield, Connecticut**



**SCENE:** View of the Carvill Combing Mill building. Photograph taken facing west.

**DATE:** 11 August 2003

**PHOTOGRAPHY BY:** A. Benoit

**TIME:** 1406 hours

**CAMERA:** Nikon CoolPix 3100



**SCENE:** View of the Carvill Combing Mill building. Photograph taken facing north.

**DATE:** 11 August 2003

**PHOTOGRAPHY BY:** A. Benoit

**TIME:** 1429 hours

**CAMERA:** Nikon CoolPix 3100



**PHOTOGRAPHY LOG SHEET**  
**Carvill Combing Mill Site • Plainfield, Connecticut**



**SCENE:** View of the Carvill Combing Mill building. Photograph taken facing west.

**DATE:** 11 August 2003

**PHOTOGRAPHY BY:** A. Benoit

**TIME:** 1429 hours

**CAMERA:** Nikon CoolPix 3100



**SCENE:** View of the Carvill Combing Mill building. Photograph taken facing southwest.

**DATE:** 11 August 2003

**PHOTOGRAPHY BY:** A. Benoit

**TIME:** 1429 hours

**CAMERA:** Nikon CoolPix 3100

**PHOTOGRAPHY LOG SHEET**  
**Carvill Combing Mill Site • Plainfield, Connecticut**



**SCENE:** View of in situ sample locations 230 and 231 (red-painted access door) on first floor of building.

**DATE:** 8 October 2003

**TIME:** 0859 hours

**PHOTOGRAPHY BY:** A. Benoit

**CAMERA:** Nikon CoolPix 3100



**SCENE:** View of in situ sample locations 232 (turquoise-painted wood) and 233 (turquoise-painted concrete) on first floor of building.

**DATE:** 8 October 2003

**TIME:** 0900 hours

**PHOTOGRAPHY BY:** A. Benoit

**CAMERA:** Nikon CoolPix 3100



**PHOTOGRAPHY LOG SHEET**  
**Carvill Combing Mill Site • Plainfield, Connecticut**



**SCENE:** View of in situ sample location 235 (white-painted wooden ceiling joists) on first floor of building.

**DATE:** 8 October 2003

**TIME:** 0901 hours

**PHOTOGRAPHY BY:** A. Benoit

**CAMERA:** Nikon CoolPix 3100



**SCENE:** View of in situ sample locations 234 (yellow/orange-painted electrical box), 236 and 237 (green-painted upper wall), and 238 and 239 (red/green-painted support column) on first floor of building.

**DATE:** 8 October 2003

**TIME:** 0908 hours

**PHOTOGRAPHY BY:** A. Benoit

**CAMERA:** Nikon CoolPix 3100

**PHOTOGRAPHY LOG SHEET**  
**Carvill Combing Mill Site • Plainfield, Connecticut**



**SCENE:** View of in situ sample locations 240 and 241 (white-painted ceiling boards and joists), 242 (yellow/orange-painted electrical piping), and 243 and 244 (red-painted steel girders) on first floor of building.

**DATE:** 8 October 2003

**TIME:** 0912 hours

**PHOTOGRAPHY BY:** A. Benoit

**CAMERA:** Nikon CoolPix 3100



**SCENE:** View of in situ sample location 246 (turquoise-painted wainscoting) on stairway to second floor of building.

**DATE:** 8 October 2003

**TIME:** 0915 hours

**PHOTOGRAPHY BY:** A. Benoit

**CAMERA:** Nikon CoolPix 3100



**PHOTOGRAPHY LOG SHEET**  
**Carvill Combing Mill Site • Plainfield, Connecticut**



**SCENE:** View of in situ sample locations 247 (turquoise-painted wall), 248 (turquoise-painted wainscoting), and 257 (red-painted sprinkler system piping) on second floor of building.

**DATE:** 8 October 2003

**TIME:** 0918 hours

**PHOTOGRAPHY BY:** A. Benoit

**CAMERA:** Nikon CoolPix 3100



**SCENE:** View of in situ sample location 249 (turquoise-painted plywood wall) on second floor of building.

**DATE:** 8 October 2003

**TIME:** 0920 hours

**PHOTOGRAPHY BY:** A. Benoit

**CAMERA:** Nikon CoolPix 3100

**PHOTOGRAPHY LOG SHEET**  
**Carvill Combing Mill Site • Plainfield, Connecticut**



**SCENE:** View of in situ sample locations 250, 251, and 252 (white-painted ceiling boards) on second floor of building.

**DATE:** 8 October 2003

**TIME:** 0922 hours

**PHOTOGRAPHY BY:** A. Benoit

**CAMERA:** Nikon CoolPix 3100



**SCENE:** View of in situ sample locations 254 and 255 (green-painted wooden support columns) on second floor of building.

**DATE:** 8 October 2003

**TIME:** 0925 hours

**PHOTOGRAPHY BY:** A. Benoit

**CAMERA:** Nikon CoolPix 3100



**PHOTOGRAPHY LOG SHEET**  
**Carvill Combing Mill Site • Plainfield, Connecticut**



**SCENE:** View of in situ sample location 258 (white-painted wooden ceiling joist) on second floor of building.

**DATE:** 8 October 2003

**TIME:** 0933 hours

**PHOTOGRAPHY BY:** A. Benoit

**CAMERA:** Nikon CoolPix 3100



**SCENE:** View of in situ sample locations 259 and 260 (light-green-painted wooden upper wall) on second floor of building.

**DATE:** 8 October 2003

**TIME:** 0940 hours

**PHOTOGRAPHY BY:** A. Benoit

**CAMERA:** Nikon CoolPix 3100

**PHOTOGRAPHY LOG SHEET**  
**Carvill Combing Mill Site • Plainfield, Connecticut**



**SCENE:** View of Carvill Combing Mill building. Photograph taken facing east.

**DATE:** 8 October 2003

**TIME:** 1020 hours

**PHOTOGRAPHY BY:** A. Benoit

**CAMERA:** Nikon CoolPix



**SCENE:** View of excavation activities along the retaining wall. Photograph taken facing northeast.

**DATE:** 20 September 2004

**TIME:** 1140 hours

**PHOTOGRAPHY BY:** A. Benoit

**CAMERA:** Nikon CoolPix



**PHOTOGRAPHY LOG SHEET**  
**Carvill Combing Mill Site • Plainfield, Connecticut**



**SCENE:** View of the underground storage tank (UST) being removed. Photograph taken facing northeast.

**DATE:** 20 September 2004

**TIME:** 1404 hours

**PHOTOGRAPHY BY:** Bonnie Mace

**CAMERA:** Nikon CoolPix 3100



**SCENE:** View of the Wagar Associates building. Photograph taken facing southeast.

**DATE:** 20 September 2004

**TIME:** 1404 hours

**PHOTOGRAPHY BY:** Bonnie Mace

**CAMERA:** Nikon CoolPix

**PHOTOGRAPHY LOG SHEET**  
**Carvill Combing Mill Site • Plainfield, Connecticut**



**SCENE:** View of the asphalt driveway leading to the site. Photograph taken facing southeast.

**DATE:** 20 September 2004

**TIME:** 1404 hours

**PHOTOGRAPHY BY:** Bonnie Mace

**CAMERA:** Nikon CoolPix 3100



**SCENE:** View of asphalt driveway leading to the site. Photograph taken facing northeast.

**DATE:** 20 September 2004

**TIME:** 1405 hours

**PHOTOGRAPHY BY:** Bonnie Mace

**CAMERA:** Nikon CoolPix 3100



**PHOTOGRAPHY LOG SHEET**  
**Carvill Combing Mill Site • Plainfield, Connecticut**

**TOP**



**SCENE:** View of the former UST location. Photograph taken facing north.

**DATE:** 20 September 2004

**TIME:** 1444 hours

**PHOTOGRAPHY BY:** Bonnie Mace

**CAMERA:** Nikon CoolPix 3100



**SCENE:** View of the former UST location. Photograph taken facing south.

**DATE:** 20 September 2004

**TIME:** 1444 hours

**PHOTOGRAPHY BY:** Bonnie Mace

**CAMERA:** Nikon CoolPix



**PHOTOGRAPHY LOG SHEET**  
**Carvill Combing Mill Site • Plainfield, Connecticut**

TOP



**SCENE:** View of the former UST location. Photograph taken facing south.

**DATE:** 20 September 2004

**TIME:** 1445 hours

**PHOTOGRAPHY BY:** Bonnie Mace

**CAMERA:** Nikon CoolPix 3100



**SCENE:** View of a damaged window along the east side of the building. Photograph taken facing southwest.

**DATE:** 28 September 2004

**TIME:** 1156 hours

**PHOTOGRAPHY BY:** Sheila Wilkinson

**CAMERA:** Nikon CoolPix 3100



**PHOTOGRAPHY LOG SHEET**  
**Carvill Combing Mill Site • Plainfield, Connecticut**



**SCENE:** View of the damaged shingles on the south side of the building.

**DATE:** 28 September 2004

**TIME:** 1157 hours

**PHOTOGRAPHY BY:** Sheila Wilkinson

**CAMERA:** Nikon CoolPix 3100



**TOP**

**SCENE:** View of a damaged window on the south side of the site building.

**DATE:** 28 September 2004

**TIME:** 1206 hours

**PHOTOGRAPHY BY:** Sheila Wilkinson

**CAMERA:** Nikon CoolPix 3100

**PHOTOGRAPHY LOG SHEET**  
**Carvill Combing Mill Site • Plainfield, Connecticut**

TOP



**SCENE:** View of a damaged window on the south side of the site building.

**DATE:** 28 September 2004

**TIME:** 1206 hours

**PHOTOGRAPHY BY:** Sheila Wilkinson

**CAMERA:** Nikon CoolPix 3100



**SCENE:** View of the loading dock area. Photograph taken facing north.

**DATE:** 28 September 2004

**TIME:** 1207 hours

**PHOTOGRAPHY BY:** Sheila Wilkinson

**CAMERA:** Nikon CoolPix 3100



**PHOTOGRAPHY LOG SHEET**  
**Carvill Combing Mill Site • Plainfield, Connecticut**

TOP



**SCENE:** View of the raceway from the site. Photograph taken facing northeast.

**DATE:** 28 September 2004

**TIME:** 1208 hours

**PHOTOGRAPHY BY:** Sheila Wilkinson

**CAMERA:** Nikon CoolPix 3100



**SCENE:** View of the Carvill Combing Mill building. Photograph taken facing east.

**DATE:** 28 September 2004

**TIME:** 1208 hours

**PHOTOGRAPHY BY:** Sheila Wilkinson

**CAMERA:** Nikon CoolPix 3100



**PHOTOGRAPHY LOG SHEET**  
**Carvill Combing Mill Site • Plainfield, Connecticut**



**SCENE:** View of the smokestack located on the south side of the building. Photograph taken facing east.

**DATE:** 28 September 2004

**TIME:** 1210 hours

**PHOTOGRAPHY BY:** Sheila Wilkinson

**CAMERA:** Nikon CoolPix 3100



**SCENE:** View of a damaged window located on the east side of the building. Photograph taken facing west.

**DATE:** 28 September 2004

**TIME:** 1211 hours

**PHOTOGRAPHY BY:** Sheila Wilkinson

**CAMERA:** Nikon CoolPix 3100

**PHOTOGRAPHY LOG SHEET**  
**Carvill Combing Mill Site • Plainfield, Connecticut**

TOP



**SCENE:** View of the “CONTAMINATED AREA” sign. Photograph taken facing north.

**DATE:** 28 September 2004

**TIME:** 1211 hours

**PHOTOGRAPHY BY:** Sheila Wilkinson

**CAMERA:** Nikon CoolPix 3100



**SCENE:** View of the second-story floor from the first-story window frame.

**DATE:** 28 September 2004

**TIME:** 1213 hours

**PHOTOGRAPHY BY:** Sheila Wilkinson

**CAMERA:** Nikon CoolPix 3100



**PHOTOGRAPHY LOG SHEET**  
**Carvill Combing Mill Site • Plainfield, Connecticut**



**SCENE:** View of the second story of the building.

**DATE:** 28 September 2004

**TIME:** 1214 hours

**PHOTOGRAPHY BY:** Sheila Wilkinson

**CAMERA:** Nikon CoolPix 3100



**SCENE:** View of the second story of the building.

**DATE:** 28 September 2004

**TIME:** 1215 hours

**PHOTOGRAPHY BY:** Sheila Wilkinson

**CAMERA:** Nikon CoolPix 3100

**PHOTOGRAPHY LOG SHEET**  
**Carvill Combing Mill Site • Plainfield, Connecticut**



**SCENE:** View of second story of the building.

**DATE:** 28 September 2004

**PHOTOGRAPHY BY:** Sheila Wilkinson

**TIME:** 1215 hours

**CAMERA:** Nikon CoolPix 3100



**SCENE:** View of the ceiling of the second story.

**DATE:** 28 September 2004

**PHOTOGRAPHY BY:** Sheila Wilkinson

**TIME:** 1216 hours

**CAMERA:** Nikon CoolPix 3100



**PHOTOGRAPHY LOG SHEET**  
**Carvill Combing Mill Site • Plainfield, Connecticut**



**SCENE:** View of the woolen machine located on the second story.

**DATE:** 28 September 2004

**TIME:** 1218 hours

**PHOTOGRAPHY BY:** Sheila Wilkinson

**CAMERA:** Nikon CoolPix 3100



**SCENE:** View of the ceiling of the second story.

**DATE:** 28 September 2004

**TIME:** 1220 hours

**PHOTOGRAPHY BY:** Sheila Wilkinson

**CAMERA:** Nikon CoolPix 3100



**PHOTOGRAPHY LOG SHEET**  
**Carvill Combing Mill Site • Plainfield, Connecticut**



**SCENE:** View of the first story of the building.

**DATE:** 28 September 2004

**PHOTOGRAPHY BY:** Sheila Wilkinson

**TIME:** 1220 hours

**CAMERA:** Nikon CoolPix 3100



**SCENE:** View of the first story of the building.

**DATE:** 28 September 2004

**PHOTOGRAPHY BY:** Sheila Wilkinson

**TIME:** 1221 hours

**CAMERA:** Nikon CoolPix 3100

**PHOTOGRAPHY LOG SHEET**  
**Carvill Combing Mill Site • Plainfield, Connecticut**



**SCENE:** View of a storage room on the first story of the building.

**DATE:** 28 September 2004

**TIME:** 1221 hours

**PHOTOGRAPHY BY:** Sheila Wilkinson

**CAMERA:** Nikon CoolPix 3100



**SCENE:** View of the machinery located on the first story of the building.

**DATE:** 28 September 2004

**TIME:** 1222 hours

**PHOTOGRAPHY BY:** Sheila Wilkinson

**CAMERA:** Nikon CoolPix 3100



**PHOTOGRAPHY LOG SHEET**  
**Carvill Combing Mill Site • Plainfield, Connecticut**

TOP



**SCENE:** View of a scale located on the first story of the building.

**DATE:** 28 September 2004

**TIME:** 1224 hours

**PHOTOGRAPHY BY:** Sheila Wilkinson

**CAMERA:** Nikon CoolPix 3100



**SCENE:** View of an entrance to a storage room located on the first story of the building.

**DATE:** 28 September 2004

**TIME:** 1227 hours

**PHOTOGRAPHY BY:** Sheila Wilkinson

**CAMERA:** Nikon CoolPix 3100

**PHOTOGRAPHY LOG SHEET**  
**Carvill Combing Mill Site • Plainfield, Connecticut**



**SCENE:** View of debris located on the first story of the building.

**DATE:** 28 September 2004

**TIME:** 1228 hours

**PHOTOGRAPHY BY:** Sheila Wilkinson

**CAMERA:** Nikon CoolPix 3100



**SCENE:** View of suspected asbestos-containing material (ACM) on pipes located on the first story of the building.

**DATE:** 28 September 2004

**TIME:** 1229 hours

**PHOTOGRAPHY BY:** Sheila Wilkinson

**CAMERA:** Nikon CoolPix 3100



**PHOTOGRAPHY LOG SHEET**  
**Carvill Combing Mill Site • Plainfield, Connecticut**



**SCENE:** View of potential ACM on pipes located on the first story of the building.

**DATE:** 28 September 2004

**TIME:** 1230 hours

**PHOTOGRAPHY BY:** Sheila Wilkinson

**CAMERA:** Nikon CoolPix 3100



**SCENE:** View of debris located on the first story of the building.

**DATE:** 28 September 2004

**TIME:** 1233 hours

**PHOTOGRAPHY BY:** Sheila Wilkinson

**CAMERA:** Nikon CoolPix 3100

**PHOTOGRAPHY LOG SHEET**  
**Carvill Combing Mill Site • Plainfield, Connecticut**



**SCENE:** View of the damaged second-story floor taken from the first story of the building.

**DATE:** 28 September 2004

**TIME:** 1233 hours

**PHOTOGRAPHY BY:**

**CAMERA:** Nikon CoolPix 3100



**SCENE:** View of the damaged ceiling.

**DATE:** 28 September 2004

**TIME:** 1234 hours

**PHOTOGRAPHY BY:** Sheila Wilkinson

**CAMERA:** Nikon CoolPix 3100



**PHOTOGRAPHY LOG SHEET**  
**Carvill Combing Mill Site • Plainfield, Connecticut**

TOP



**SCENE:** View of the damaged second-story floor taken from the first story of the building.

**DATE:** 28 September 2004

**TIME:** 1234 hours

**PHOTOGRAPHY BY:** Sheila Wilkinson

**CAMERA:** Nikon CoolPix 3100

TOP



**SCENE:** View of first story of the building.

**DATE:** 28 September 2004

**TIME:** 1235 hours

**PHOTOGRAPHY BY:** Sheila Wilkinson

**CAMERA:** Nikon CoolPix 3100

**PHOTOGRAPHY LOG SHEET**  
**Carvill Combing Mill Site • Plainfield, Connecticut**



**SCENE:** View of the raceway located within the building.

**DATE:** 28 September 2004

**TIME:** 1330 hours

**PHOTOGRAPHY BY:** Sheila Wilkinson

**CAMERA:** Nikon CoolPix 3100



**SCENE:** View of the raceway located within the building.

**DATE:** 28 September 2004

**TIME:** 1330 hours

**PHOTOGRAPHY BY:** Sheila Wilkinson

**CAMERA:** Nikon CoolPix 3100



**PHOTOGRAPHY LOG SHEET**  
**Carvill Combing Mill Site • Plainfield, Connecticut**



**SCENE:** View of a wooden piling installed along the north side of the building. Photograph taken facing west.

**DATE:** 9 November 2004

**TIME:** 0841 hours

**PHOTOGRAPHY BY:** Sheila Wilkinson

**CAMERA:** Nikon CoolPix 3100



**SCENE:** View of the wooden debris containment fence located along the north side of the building. Photograph taken facing west.

**DATE:** 9 November 2004

**TIME:** 0841 hours

**PHOTOGRAPHY BY:** Sheila Wilkinson

**CAMERA:** Nikon CoolPix 3100



**PHOTOGRAPHY LOG SHEET**  
**Carvill Combing Mill Site • Plainfield, Connecticut**

**TOP**



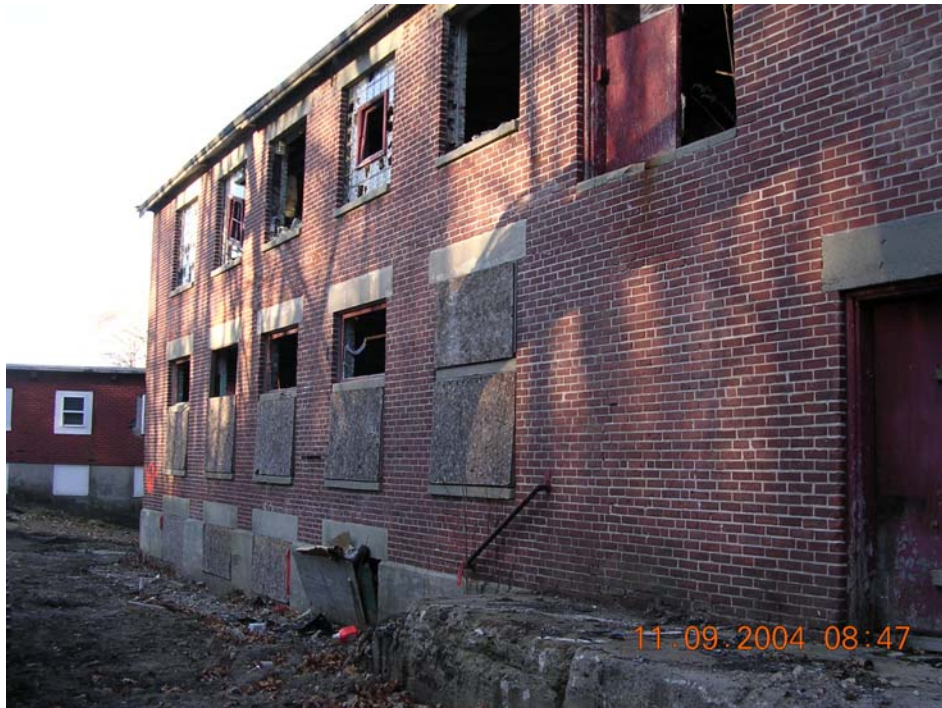
**SCENE:** View of the wooden debris containment fence located along the north side of the building. Photograph taken facing west.

**DATE:** 9 November 2004

**TIME:** 0841 hours

**PHOTOGRAPHY BY:** Sheila Wilkinson

**CAMERA:** Nikon CoolPix 3100



**SCENE:** View of the eastern side of the Carvill Combing building. Photograph taken facing southwest.

**DATE:** 9 November 2004

**TIME:** 0847 hours

**PHOTOGRAPHY BY:** Sheila Wilkinson

**CAMERA:** Nikon CoolPix 3100

**PHOTOGRAPHY LOG SHEET**  
**Carvill Combing Mill Site • Plainfield, Connecticut**

TOP



**SCENE:** View of the ACM removal staging area. Photograph taken facing south.

**DATE:** 9 November 2004

**TIME:** 0848 hours

**PHOTOGRAPHY BY:** Sheila Wilkinson

**CAMERA:** Nikon CoolPix 3100



**SCENE:** View of the excavator prior to demolition activities. Photograph taken facing northeast.

**DATE:** 9 November 2004

**TIME:** 0848 hours

**PHOTOGRAPHY BY:** Sheila Wilkinson

**CAMERA:** Nikon CoolPix 3100



**PHOTOGRAPHY LOG SHEET**  
**Carvill Combing Mill Site • Plainfield, Connecticut**



**SCENE:** View of the southern side of the Carvill Combing building. Photograph taken facing north.

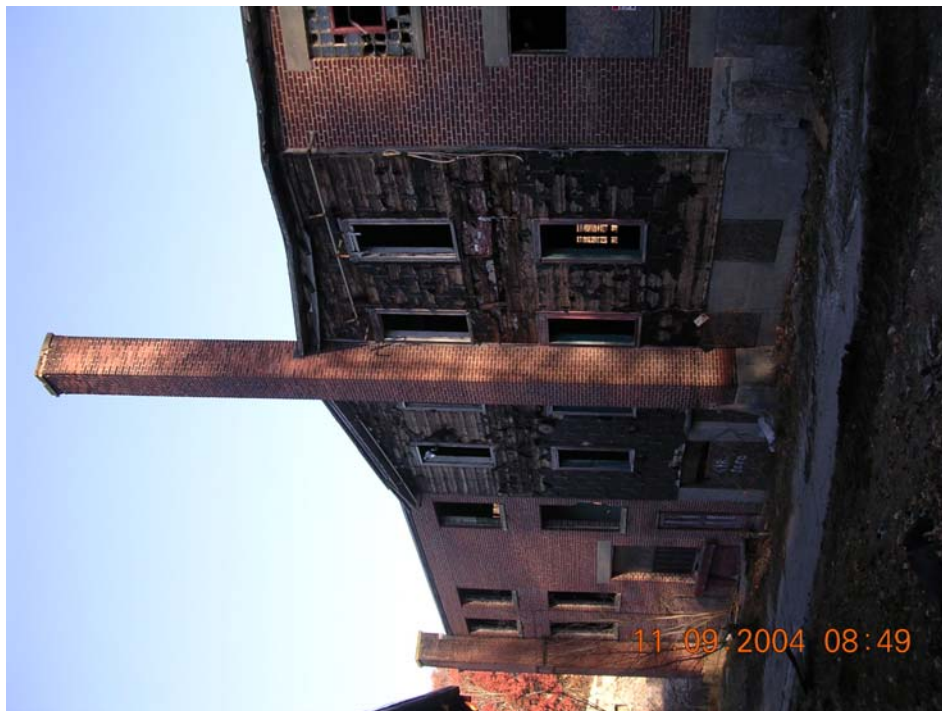
**DATE:** 9 November 2004

**TIME:** 0849 hours

**PHOTOGRAPHY BY:** Sheila Wilkinson

**CAMERA:** Nikon CoolPix 3100

**TOP**



**SCENE:** View of the smokestack prior to demolition. Photograph taken facing north.

**DATE:** 9 November 2004

**TIME:** 0849 hours

**PHOTOGRAPHY BY:** Sheila Wilkinson

**CAMERA:** Nikon CoolPix 3100



**PHOTOGRAPHY LOG SHEET**  
**Carvill Combing Mill Site • Plainfield, Connecticut**

TOP



**SCENE:** View of the crane prior to demolition activities. Photograph taken facing northeast.

**DATE:** 9 November 2004

**TIME:** 0850 hours

**PHOTOGRAPHY BY:** Sheila Wilkinson

**CAMERA:** Nikon CoolPix 3100

TOP



**SCENE:** View of the staged Baker Tank. Photograph taken facing northwest.

**DATE:** 9 November 2004

**TIME:** 0850 hours

**PHOTOGRAPHY BY:** Sheila Wilkinson

**CAMERA:** Nikon CoolPix 3100

**PHOTOGRAPHY LOG SHEET**  
**Carvill Combing Mill Site • Plainfield, Connecticut**



**SCENE:** View of the Carvill Mill building. Photograph taken facing east.

**DATE:** 9 November 2004

**TIME:** 0851 hours

**PHOTOGRAPHY BY:** Sheila Wilkinson

**CAMERA:** Nikon CoolPix 3100



**SCENE:** View of the smokestack demolition activities. Photograph taken facing north.

**DATE:** 9 November 2004

**TIME:** 1201 hours

**PHOTOGRAPHY BY:** Sheila Wilkinson

**CAMERA:** Nikon CoolPix 3100



**PHOTOGRAPHY LOG SHEET**  
**Carvill Combing Mill Site • Plainfield, Connecticut**

TOP



**SCENE:** View of the smokestack demolition activities. Photograph taken facing north.

**DATE:** 9 November 2004

**TIME:** 1202 hours

**PHOTOGRAPHY BY:**

**CAMERA:** Nikon CoolPix 3100



**SCENE:** View of building demolition activities. Photograph taken facing north.

**DATE:** 9 November 2004

**TIME:** 1206 hours

**PHOTOGRAPHY BY:** Sheila Wilkinson

**CAMERA:** Nikon CoolPix 3100

**PHOTOGRAPHY LOG SHEET**  
**Carvill Combing Mill Site • Plainfield, Connecticut**



**SCENE:** View of the small UST being removed from the building. Photograph taken facing north.

**DATE:** 9 November 2004

**TIME:** 1502 hours

**PHOTOGRAPHY BY:** Sheila Wilkinson

**CAMERA:** Nikon CoolPix 3100



**SCENE:** View of demolition activities. Photograph taken facing north.

**DATE:** 9 November 2004

**TIME:** 1502 hours

**PHOTOGRAPHY BY:** Sheila Wilkinson

**CAMERA:** Nikon CoolPix 3100



**PHOTOGRAPHY LOG SHEET**  
**Carvill Combing Mill Site • Plainfield, Connecticut**



**SCENE:** View of demolition activities. Photograph taken facing west.

**DATE:** 10 November 2004

**TIME:** 1245 hours

**PHOTOGRAPHY BY:** Sheila Wilkinson

**CAMERA:** Nikon CoolPix 3100



**SCENE:** View of demolition activities. Photograph taken facing west.

**DATE:** 10 November 2004

**TIME:** 1249 hours

**PHOTOGRAPHY BY:** Sheila Wilkinson

**CAMERA:** Nikon CoolPix 3100



**PHOTOGRAPHY LOG SHEET**  
**Carvill Combing Mill Site • Plainfield, Connecticut**



**SCENE:** View of the crane during demolition activities. Photograph taken facing northeast.

**DATE:** 11 November 2004

**TIME:** 1339 hours

**PHOTOGRAPHY BY:** Sean Dunn

**CAMERA:** Nikon CoolPix 3100



**SCENE:** View of demolition activities. Photograph taken facing northeast.

**DATE:** 11 October 2004

**TIME:** 1502 hours

**PHOTOGRAPHY BY:** Sean Dunn

**CAMERA:** Nikon CoolPix 3100

**PHOTOGRAPHY LOG SHEET**  
**Carvill Combing Mill Site • Plainfield, Connecticut**



**SCENE:** View of demolition activities. Photograph taken facing northeast.

**DATE:** 11 October 2004

**TIME:** 1505 hours

**PHOTOGRAPHY BY:** Sean Dunn

**CAMERA:** Nikon CoolPix 3100



**SCENE:** View of demolition activities. Photograph taken facing northeast.

**DATE:** 11 November 2004

**TIME:** 1339 hours

**PHOTOGRAPHY BY:** Sean Dunn

**CAMERA:** Nikon CoolPix 3100



**PHOTOGRAPHY LOG SHEET**  
**Carvill Combing Mill Site • Plainfield, Connecticut**



**SCENE:** View of demolition activities. Photograph taken facing northeast.

**DATE:** 13 October 2004

**TIME:** 0719 hours

**PHOTOGRAPHY BY:** Sean Dunn

**CAMERA:** Nikon CoolPix 3100



**SCENE:** View of the crane during demolition activities. Photograph taken facing east.

**DATE:** 13 October 2004

**TIME:** 0720 hours

**PHOTOGRAPHY BY:** Sean Dunn

**CAMERA:** Nikon CoolPix 3100

**PHOTOGRAPHY LOG SHEET**  
**Carvill Combing Mill Site • Plainfield, Connecticut**



**SCENE:** View of the debris after the completion of demolition activities. Photograph taken facing north.

**DATE:** 15 October 2004

**TIME:** 1154 hours

**PHOTOGRAPHY BY:** Wayne Brown

**CAMERA:** Nikon CoolPix 3100



**SCENE:** View of debris after the completion of demolition activities. Photograph taken facing northeast.

**DATE:** 15 October 2004

**TIME:** 1456 hours

**PHOTOGRAPHY BY:** Wayne Brown

**CAMERA:** Nikon CoolPix 3100



**PHOTOGRAPHY LOG SHEET**  
**Carvill Combing Mill Site • Plainfield, Connecticut**



**SCENE:** View of the site from the opposite bank of the Moosup River. Photograph taken facing northeast.

**DATE:** 15 October 2004

**TIME:** 1157 hours

**PHOTOGRAPHY BY:** Wayne Brown

**CAMERA:** Nikon CoolPix 3100



**SCENE:** View of the site. Photograph taken facing northeast.

**DATE:** 16 October 2004

**TIME:** 1424 hours

**PHOTOGRAPHY BY:** Wayne Brown

**CAMERA:** Nikon CoolPix 3100



**PHOTOGRAPHY LOG SHEET**  
**Carvill Combing Mill Site • Plainfield, Connecticut**



**SCENE:** View of the riverbank adjacent to the retaining wall. Photograph taken facing northeast.

**DATE:** 16 October 2004

**TIME:** 1425 hours

**PHOTOGRAPHY BY:** Wayne Brown

**CAMERA:** Nikon CoolPix 3100



**SCENE:** View of load-out activities. Photograph taken facing east.

**DATE:** 16 October 2004

**TIME:** 1425 hours

**PHOTOGRAPHY BY:** Wayne Brown

**CAMERA:** Nikon CoolPix 3100



**PHOTOGRAPHY LOG SHEET**  
**Carvill Combing Mill Site • Plainfield, Connecticut**



**SCENE:** View of the site from the Brunswick Mill site. Photograph taken facing east.

**DATE:** 19 October 2004

**TIME:** 1331 hours

**PHOTOGRAPHY BY:** Wayne Brown

**CAMERA:** Nikon CoolPix 3100



**SCENE:** View of the excavator during load-out activities. Photograph taken facing northeast.

**DATE:** 19 October 2004

**TIME:** 1343 hours

**PHOTOGRAPHY BY:** Wayne Brown

**CAMERA:** Nikon CoolPix 3100

**PHOTOGRAPHY LOG SHEET**  
**Carvill Combing Mill Site • Plainfield, Connecticut**



**SCENE:** View of site restoration activities. Photograph taken facing northeast.

**DATE:** 18 May 2005

**TIME:** 1200 hours

**PHOTOGRAPHY BY:** Sean Dunn

**CAMERA:** Nikon CoolPix 3100



**SCENE:** View of site restoration activities. Photograph taken facing north.

**DATE:** 18 May 2005

**TIME:** 1201 hours

**PHOTOGRAPHY BY:** Sean Dunn

**CAMERA:** Nikon CoolPix 3100



**PHOTOGRAPHY LOG SHEET**  
**Carvill Combing Mill Site • Plainfield, Connecticut**



**SCENE:** View of site restoration activities. Photograph taken facing southwest.

**DATE:** 18 May 2005

**TIME:** 1205 hours

**PHOTOGRAPHY BY:** Sean Dunn

**CAMERA:** Nikon CoolPix 3100



**SCENE:** View of the re-paved asphalt driveway. Photograph taken facing west.

**DATE:** 18 May 2005

**TIME:** 1206 hours

**PHOTOGRAPHY BY:** Sean Dunn

**CAMERA:** Nikon CoolPix 3100



**PHOTOGRAPHY LOG SHEET**  
**Carvill Combing Mill Site • Plainfield, Connecticut**



**SCENE:** View of the re-paved asphalt driveway. Photograph taken facing south.

**DATE:** 18 May 2005

**TIME:** 1210 hours

**PHOTOGRAPHY BY:** Sean Dunn

**CAMERA:** Nikon CoolPix 3100



**SCENE:** View of re-paved asphalt driveway. Photograph taken facing north.

**DATE:** 18 May 2005

**TIME:** 1214 hours

**PHOTOGRAPHY BY:** Sean Dunn

**CAMERA:** Nikon CoolPix 3100

**PHOTOGRAPHY LOG SHEET**  
**Carvill Combing Mill Site • Plainfield, Connecticut**



**SCENE:** View of the re-paved asphalt driveway. Photograph taken facing northeast.

**DATE:** 18 May 2005

**TIME:** 1215 hours

**PHOTOGRAPHY BY:** Sean Dunn

**CAMERA:** Nikon CoolPix 3100



**SCENE:** View of site restoration activities. Photograph taken facing northeast.

**DATE:** 18 May 2005

**TIME:** 1217 hours

**PHOTOGRAPHY BY:** Sean Dunn

**CAMERA:** Nikon CoolPix 3100



## Appendix D

### Waste Disposal Table

**CARVILL COMBING MILL SITE**  
**WASTE DISPOSAL TABLE**  
**TDD No. 01-05-07-0015**

Waste Manifest Description	Quantity	Manifest Number	Disposal Facility
Reportable Quantity (RQ), Asbestos, Class 9, NA 2212, Packing Group (PG) III	60 cu. yds.	144273	Minerva Enterprises, 9000 Minerva Road, Waynesburg, OH 44688
RQ, Asbestos, Class 9, NA2212, PG III	33.2 tons	11-29-04-13	Minerva Enterprises, 9000 Minerva Road, Waynesburg, OH 44688
RQ, Asbestos, Class 9, NA2212, PG III	25.43 tons	11-24-04-11	Minerva Enterprises, 9000 Minerva Road, Waynesburg, OH 44688
RQ, Asbestos, Class 9, NA2212, PG III	33.19 tons	11-24-04-10	Minerva Enterprises, 9000 Minerva Road, Waynesburg, OH 44688
RQ, Asbestos, Class 9, NA2212, PG III	29.81 tons	11-24-04-09	Minerva Enterprises, 9000 Minerva Road, Waynesburg, OH 44688
RQ, Asbestos, Class 9, NA2212, PG III	30.72 tons	11-24-04-08	Minerva Enterprises, 9000 Minerva Road, Waynesburg, OH 44688
RQ, Asbestos, Class 9, NA2212, PG III	25.94 tons	11-22-04-04	Minerva Enterprises, 9000 Minerva Road, Waynesburg, OH 44688
RQ, Asbestos, Class 9, NA2212, PG III	22.55 tons	11-22-04-03	Minerva Enterprises, 9000 Minerva Road, Waynesburg, OH 44688
RQ, Asbestos, Class 9, NA2212, PG III	21.06 tons	11-22-04-02	Minerva Enterprises, 9000 Minerva Road, Waynesburg, OH 44688
RQ, Asbestos, Class 9, NA2212, PG III	24.67 tons	11-22-04-01	Minerva Enterprises, 9000 Minerva Road, Waynesburg, OH 44688
RQ, Asbestos, Class 9, NA2212, PG III	27.49 tons	A144671	Minerva Enterprises, 9000 Minerva Road, Waynesburg, OH 44688
RQ, Asbestos, Class 9, NA2212, PG III	29.29 tons	A144670	Minerva Enterprises, 9000 Minerva Road, Waynesburg, OH 44688
RQ, Asbestos, Class 9, NA2212, PG III	29.99 tons	A144669	Minerva Enterprises, 9000 Minerva Road, Waynesburg, OH 44688
RQ, Asbestos, Class 9, NA2212, PG III	26.96 tons	A144672	Minerva Enterprises, 9000 Minerva Road, Waynesburg, OH 44688
RQ, Asbestos, Class 9, NA2212, PG III	24.28 tons	A144673	Minerva Enterprises, 9000 Minerva Road, Waynesburg, OH 44688
RQ, Asbestos, Class 9, NA2212, PG III	24.94 tons	20813	Minerva Enterprises, 9000 Minerva Road, Waynesburg, OH 44688
RQ, Asbestos, Class 9, NA2212, PG III	27.27 tons	20812	Minerva Enterprises, 9000 Minerva Road, Waynesburg, OH 44688
RQ, Asbestos, Class 9, NA2212, PG III	23.14 tons	20811	Minerva Enterprises, 9000 Minerva Road, Waynesburg, OH 44688
RQ, Asbestos, Class 9, NA2212, PG III	19.92 tons	20810	Minerva Enterprises, 9000 Minerva Road, Waynesburg, OH 44688
RQ, Asbestos, Class 9, NA2212, PG III	31.26 tons	20809	Minerva Enterprises, 9000 Minerva Road, Waynesburg, OH 44688
RQ, Asbestos, Class 9, NA2212, PG III	28.78 tons	20807	Minerva Enterprises, 9000 Minerva Road, Waynesburg, OH 44688
RQ, Asbestos, Class 9, NA2212, PG III	26.69 tons	20806	Minerva Enterprises, 9000 Minerva Road, Waynesburg, OH 44688
RQ, Asbestos, Class 9, NA2212, PG III	31.97 tons	20805	Minerva Enterprises, 9000 Minerva Road, Waynesburg, OH 44688
RQ, Asbestos, Class 9, NA2212, PG III	27.88 tons	20817	Minerva Enterprises, 9000 Minerva Road, Waynesburg, OH 44688
RQ, Asbestos, Class 9, NA2212, PG III	28.46 tons	20816	Minerva Enterprises, 9000 Minerva Road, Waynesburg, OH 44688
RQ, Asbestos, Class 9, NA2212, PG III	21.56 tons	20815	Minerva Enterprises, 9000 Minerva Road, Waynesburg, OH 44688
RQ, Asbestos, Class 9, NA2212, PG III	200 lbs	51805-1	Minerva Enterprises, 9000 Minerva Road, Waynesburg, OH 44688
RQ, Asbestos, Class 9, NA2212, PG III	11.13 tons	87620	Waste Management, 97 Rochester Neck Road, Rochester, NH
RQ, Asbestos, Class 9, NA2212, PG III	12.5 tons	87621	Waste Management, 97 Rochester Neck Road, Rochester, NH
RQ, Asbestos, Class 9, NA2212, PG III	25.34 tons	20808	Minerva Enterprises, 9000 Minerva Road, Waynesburg, OH 44688
RQ, Asbestos, Class 9, NA2212, PG III	31.52 tons	11-24-04-05	A & L Salvage, 11225 S. R. 45, Lisbon, OH 44432
RQ, Asbestos, Class 9, NA2212, PG III	33.77 tons	11-24-04-06	A & L Salvage, 11225 S. R. 45, Lisbon, OH 44432
RQ, Asbestos, Class 9, NA2212, PG III	26.99 tons	11-24-04-07	A & L Salvage, 11225 S. R. 45, Lisbon, OH 44432

cu. yds. - cubic yards

lbs - pounds

NH - New Hampshire

OH - Ohio