

C:\Users\1903j\desktop\Work at Home\06218001.00 - DR Landfill Battelle\CADD\Drawings\Cover Sheet GCCS.dwg Aug 22, 2018 - 11:44am Layout Name: COVER SHEET By: 1903j\ld

GCCS CONCEPTUAL DESIGN

San Cristobal Landfill

PREPARED BY:
SCS ENGINEERS
3900 KILROY AIRPORT WAY
SUITE 100
LONG BEACH, CA 90806
+1 562-426-954

SCS JOB NO. 06218001.00
AUGUST 2018

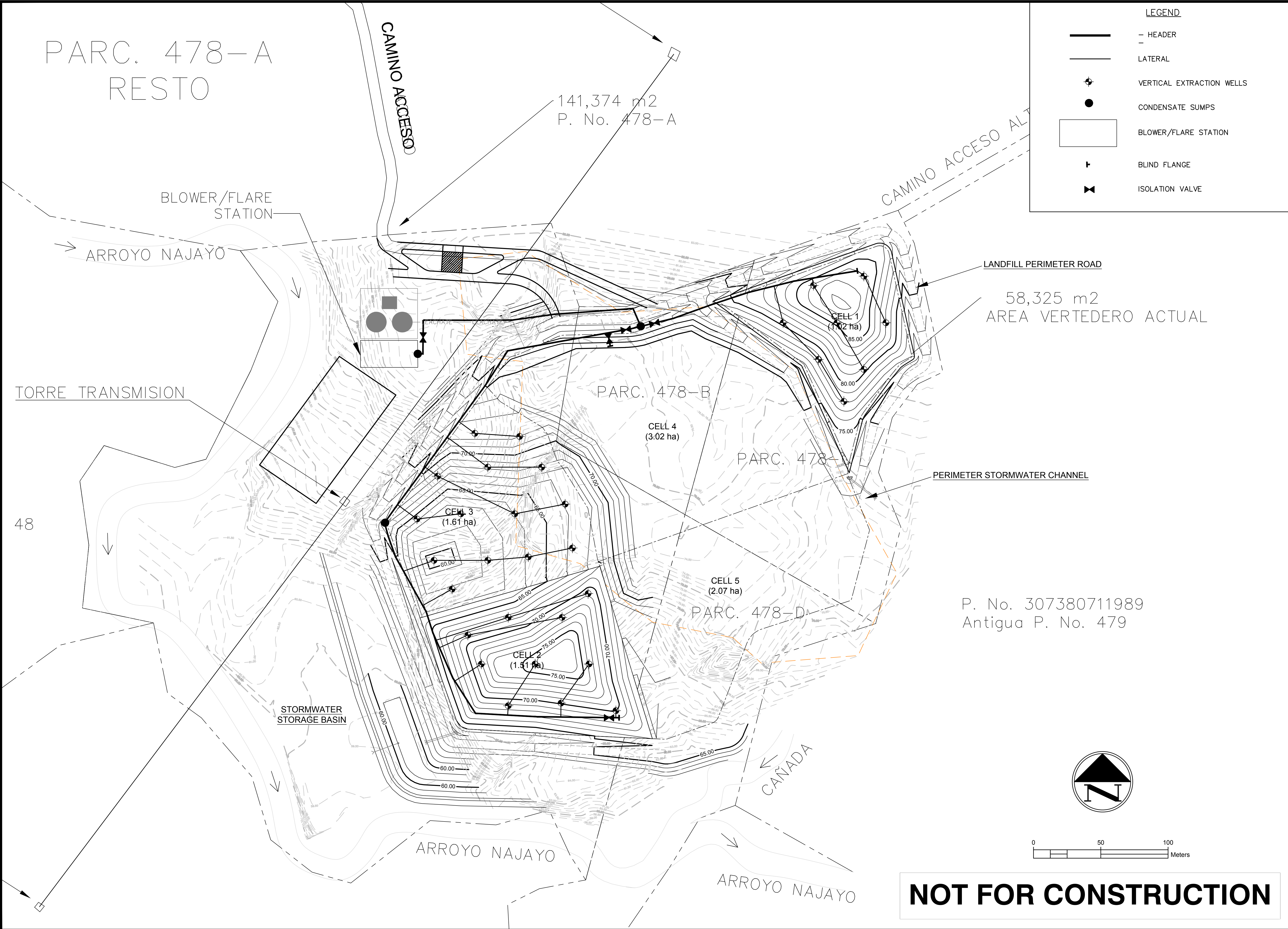


REFERENCE MAP
NO SCALE

INDEX OF DRAWINGS	
SHEET NO.	DESCRIPTION
0	COVER SHEET
1	PHASE I
2	PHASE II
3	PHASE III
4	GCCS DETAILS
5	GCCS DETAILS
6	GCCS DETAILS

SHEET TITLE		COVER SHEET		CK BY
PROJECT TITLE		SAN CRISTOBAL LANDFILL		
CLIENT		BATTELLE MEMORIAL INSTITUTE		
		505 KING AVENUE COLUMBUS, OHIO 43201		
SCS ENGINEERS		2520 WHITEHALL PARK DRIVE, SUITE 450 CHARLOTTE, NORTH CAROLINA 28273 PHONE: (704) 504-3107 FAX: (704) 504-3174		
PROJ. NO. 06218001.00	DWG. BY. C/A	CHK. BY. RWB	APP. BY.	
CADD FILE: COVER GCCS				
DATE: AUG 2018				
SCALE: AS NOTED				
DRAWING NO.				
0 of 6				

C:\Users\1903jld\Desktop\Work at Home\06218001.00 - DR Landfill Battelle\CADD\Drawings\GCCS\Sheet 1 - GCCS Phase 1 new.dwg Sep 10, 2018 - 3:11pm Layout Name: LANDFILL DEVELOPMENT By: 1903jld



CK BY		DESCRIPTION	REV	DATE
			1	
			2	
			3	
			4	
			5	
			6	
			7	
			8	
			9	
			10	

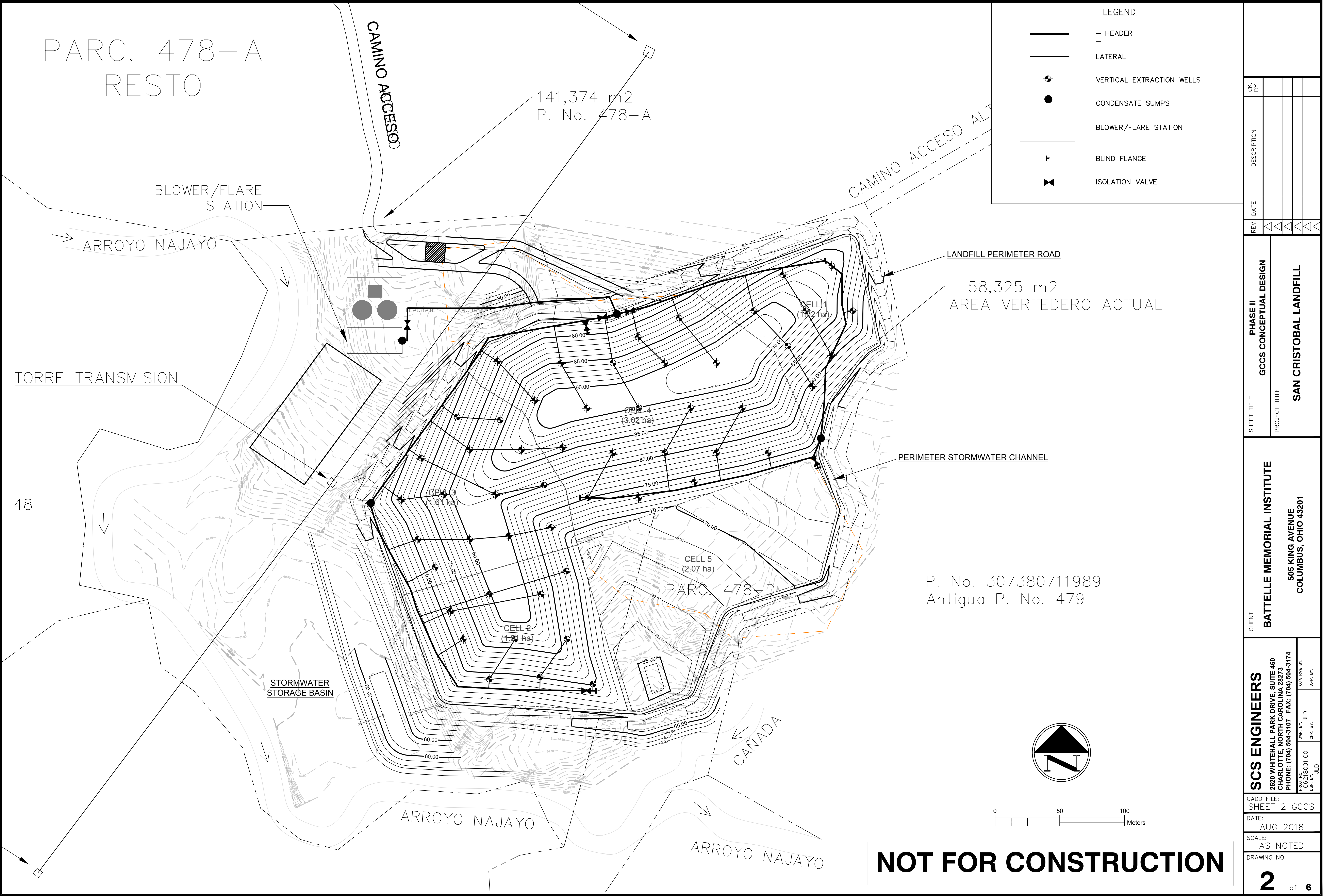
SHEET TITLE	PHASE I
GCCS CONCEPTUAL DESIGN	
PROJECT TITLE	SAN CRISTOBAL LANDFILL

CLIENT	BATTELLE MEMORIAL INSTITUTE
505 KING AVENUE COLUMBUS, OHIO 43201	

SCS ENGINEERS	2520 WHITEHALL PARK DRIVE, SUITE 450 CHARLOTTE, NORTH CAROLINA 28273 PHONE: (704) 504-3107 FAX: (704) 504-3174
PROJ. NO. 06218001.00	DWG. BY: JLD
TASK BY: JLD	CHK. BY: JLD
	C/A REV BY: APP. BY:

CADD FILE: SHEET 1 GCCS
DATE: AUG 2018
SCALE: AS NOTED
DRAWING NO. 1 of 6

C:\Users\1903jld\Desktop\Work at Home\06218001.00 - DR Landfill Battelle\CADD\Drawings\GCCS\Sheet 2 - GCCS Phase II.dwg Sep 10, 2018 - 3:11pm Layout Name: LANDFILL DEVELOPMENT By: 1903jld



PARC. 478-A
RESTO

141,374 m²
P. No. 478-A

CAMINO ACCESO

CAMINO ACCESO ALT

BLOWER/FLARE STATION

ARROYO NAJAYO

TORRE TRANSMISION

48

STORMWATER STORAGE BASIN

ARROYO NAJAYO

CAÑADA

ARROYO NAJAYO

58,325 m²
AREA VERTEDERO ACTUAL

LANDFILL PERIMETER ROAD

PERIMETER STORMWATER CHANNEL

P. No. 307380711989
Antigua P. No. 479

LEGEND

- HEADER
- LATERAL
- ⊕ VERTICAL EXTRACTION WELLS
- CONDENSATE SUMPS
- BLOWER/FLARE STATION
- ⊥ BLIND FLANGE
- ⊗ ISOLATION VALVE

CLIENT

BATTELLE MEMORIAL INSTITUTE
505 KING AVENUE
COLUMBUS, OHIO 43201

SCS ENGINEERS
2520 WHITEHALL PARK DRIVE, SUITE 450
CHARLOTTE, NORTH CAROLINA 28273
PHONE: (704) 504-3107 FAX: (704) 504-3174

PROJ. NO. 06218001.00
DSK. BY: JLD
DWG. BY: JLD
CHK. BY: JLD
APP. BY: JLD

CADD FILE: SHEET 3 GCCS

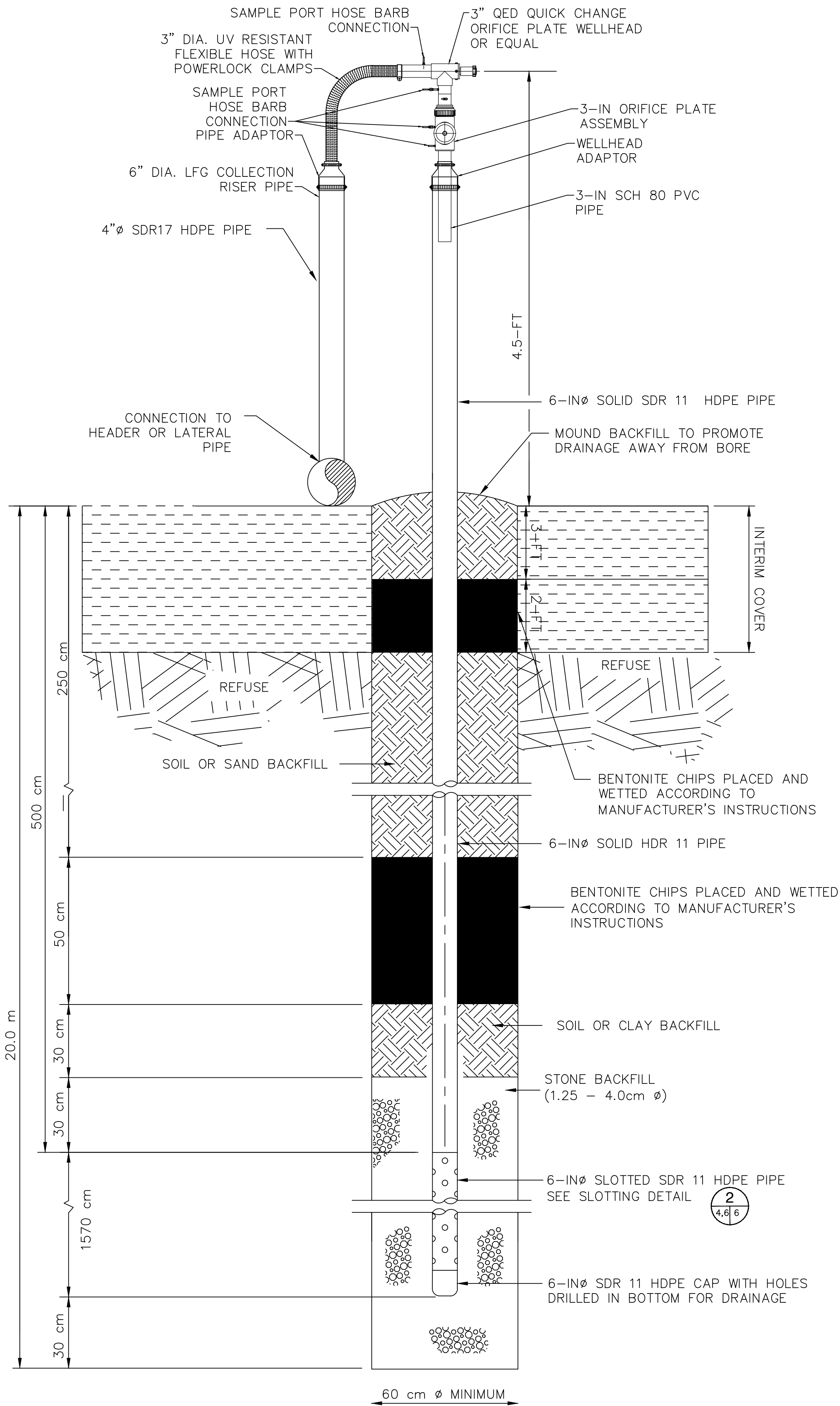
DATE: AUG 2018

SCALE: AS NOTED

DRAWING NO. 3 of 17

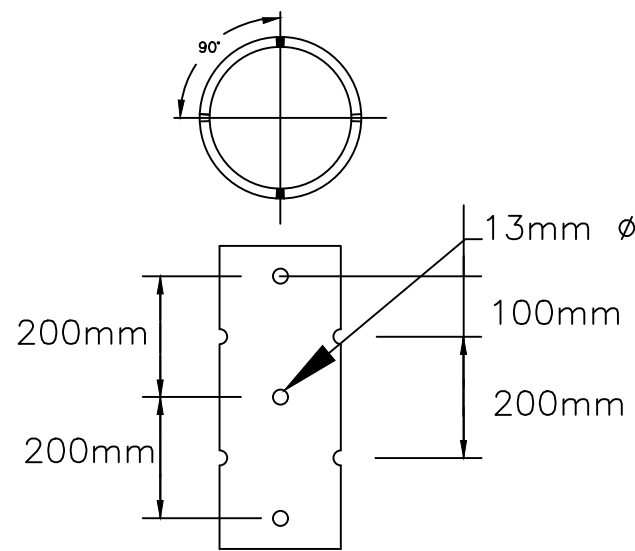
NOT FOR CONSTRUCTION

NOT FOR CONSTRUCTION



EXTRACTION WELL DETAIL
NO SCALE

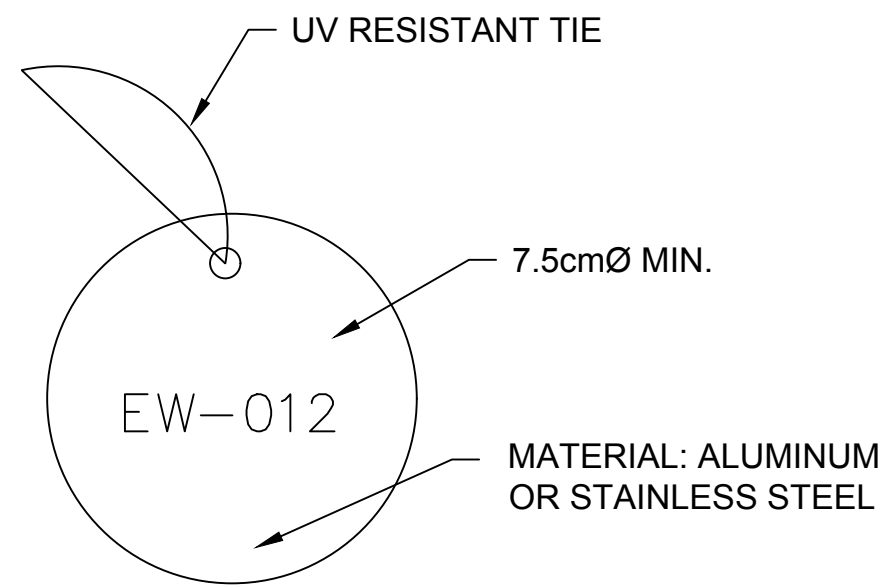
1
5 6



NOTE: STAGGER PERFORATIONS
BY 45° FOR ADJACENT ROWS

PERFORATED PIPE DETAIL
NOT TO SCALE

2
6 6



EMBOSSE LETTERS ACCORDINGLY:
EW-012 = LFG WELL

IDENTIFICATION TAG DETAIL
NOT TO SCALE

3
6 6

GENERAL EXTRACTION WELL NOTES:

1. CONTRACTOR SHALL USE LANDTEC ACCUFLO ASSEMBLY MANUFACTURED BY LANDTEC, COMMERCE, CALIFORNIA, USA 800-821-0496 OR EQUIVALENT.
2. 6"Ø X 2"Ø FERNCO REDUCER FITTING SHALL BE PART NO. 1056-62 BY FERNCO (WWW.FERNCO.COM (810) 653-9626). CONTRACTOR SHALL PROVIDE RELATED STAINLESS STEEL CLAMPS.
3. USE MOLDED TEE AND REDUCER FOR CONNECTION TO 6"Ø AND SMALLER HEADER OR LATERAL USE 4"Ø BRANCH SADDLE CONNECTION FOR 8"Ø AND LARGER HEADER CONNECTION.
4. DURING CONSTRUCTION, CONTRACTOR SHALL TEMPORARILY CAP THE RISER PIPE OF VERTICAL EXTRACTION WELL TO PREVENT DIRECT VENTING OF LFG THROUGH RISER PIPE. TEMPORARY CAP SHALL BE REMOVED DURING INSTALLATION OF WELLHEADS.
5. FLEXIBLE PVC PIPE SHALL BE MANUFACTURED BY KANAFLEX CORPORATION (310-637-1616) SERIES 101-PS AND FASTENERS SHALL BE KANAFLEX SERIES 101-PS POWER LOCK CLAMPS.
6. CONTRACTOR SHALL SUPPLY OWNER WITH ONE SPARE WELLHEAD ASSEMBLY AND 25 FEET (8M) OF SPARE 2-INCH DIAMETER FLEXIBLE PVC PIPE.
7. "BENTONITE CHIPS" REFER TO A WELL SEAL COMPRISED OF HYDRATED SODIUM BENTONITE PELLETS OR CHIPS. BENTONITE MATERIAL SHALL CONSIST OF CLAY GREATER THAN 85% SODIUM MONTMORILLONITE WITHOUT ADDITIVES.
8. THE CONFIGURATION SHOWN DEPICTS THE CONNECTION TO THE HEADER WHEN THE HEADER PIPE IS IN VICINITY OF THE WELL (I.E. LESS THAN 2M). FOR A CONNECTION TO THE HEADER GREATER THAN 2M, MAKE UP THE DISTANCE TO THE HEADER PIPING USING A 4" DIAMETER HDPE PIPE LAID ABOVE GRADE.

EXTRACTION WELL SCHEDULE NOTES:

1. WELL DEPTHS ARE TO BE 20 METERS IN MOST CASES. WELL DEPTHS ON LOWER ELEVATIONS MUST BE ADJUSTED ONLY BY ENGINEER BASED ON ACTUAL GRADES ENCOUNTERED. CONTRACTOR SHALL VERIFY SURVEY LOCATION AND EXISTING GROUND ELEVATION PRIOR TO DRILLING. CONTRACTOR SHALL IMMEDIATELY NOTIFY OWNER AND ENGINEER IF ELEVATIONS DIFFER FROM THOSE INDICATED PRIOR TO DRILLING.
2. THE CONTRACTOR MUST PROVIDE THE ENGINEER WITH THE ACTUAL EXISTING GROUND ELEVATIONS (BASED ON SURVEY DATA) PRIOR TO BEGINNING DRILLING.
3. CONTRACTOR MUST USE DRY DRILLING EQUIPMENT. WET ROTARY DRILLING EQUIPMENT MAY NOT BE USED.
5. WELLS ARE TO BE DRILLED TO DEPTH AND DIAMETER SHOWN ON PLANS. BORING DEPTHS SHOWN ARE ESTIMATED AND MAY BE ADJUSTED IN FIELD ONLY BY ENGINEER. UNDER NO CIRCUMSTANCES ARE DRILLING DEPTHS FROM WELL SCHEDULE TO BE EXCEEDED UNLESS APPROVED BY ENGINEER.
6. IF WATER IS ENCOUNTERED IN A BORING THE FOLLOWING PROCEDURES SHOULD BE FOLLOWED:
A. CONTRACTOR MAY BE DIRECTED TO DRILL BEYOND POINT AT WHICH WATER WAS ENCOUNTERED. IF WET CONDITIONS REMAINS, BORING MAY BE TERMINATED AND LENGTH OF SLOTTED PIPE ADJUSTED BY ENGINEER.
B. IF WATER IS ENCOUNTERED AT SHALLOW DEPTH, ENGINEER MAY DECREASE WELL DEPTH AND LENGTH OF SLOTTED PIPE OR RELOCATE WELL.
7. WHEN BORING IS ABANDONED AS DIRECTED BY ENGINEER, CONTRACTOR SHALL BACKFILL BOREHOLE WITH CUTTINGS REMOVED DURING DRILLING. IF CUTTINGS ARE NOT SUITABLE AS BACKFILL, CONTRACTOR SHALL USE SOIL BACKFILL MATERIAL. A 2-FOOT (600mm) THICK BENTONITE PLUG WILL BE PLACED IN BOREHOLE WITH DEPTH IS 4 FEET (1200mm) BELOW EXISTING GRADE. REMAINING 2-FEET (600mm) OF BOREHOLE SHALL BE FILLED WITH SOIL MATERIAL AND COMPACTED TO MATCH EXISTING GRADE.

NOT FOR CONSTRUCTION

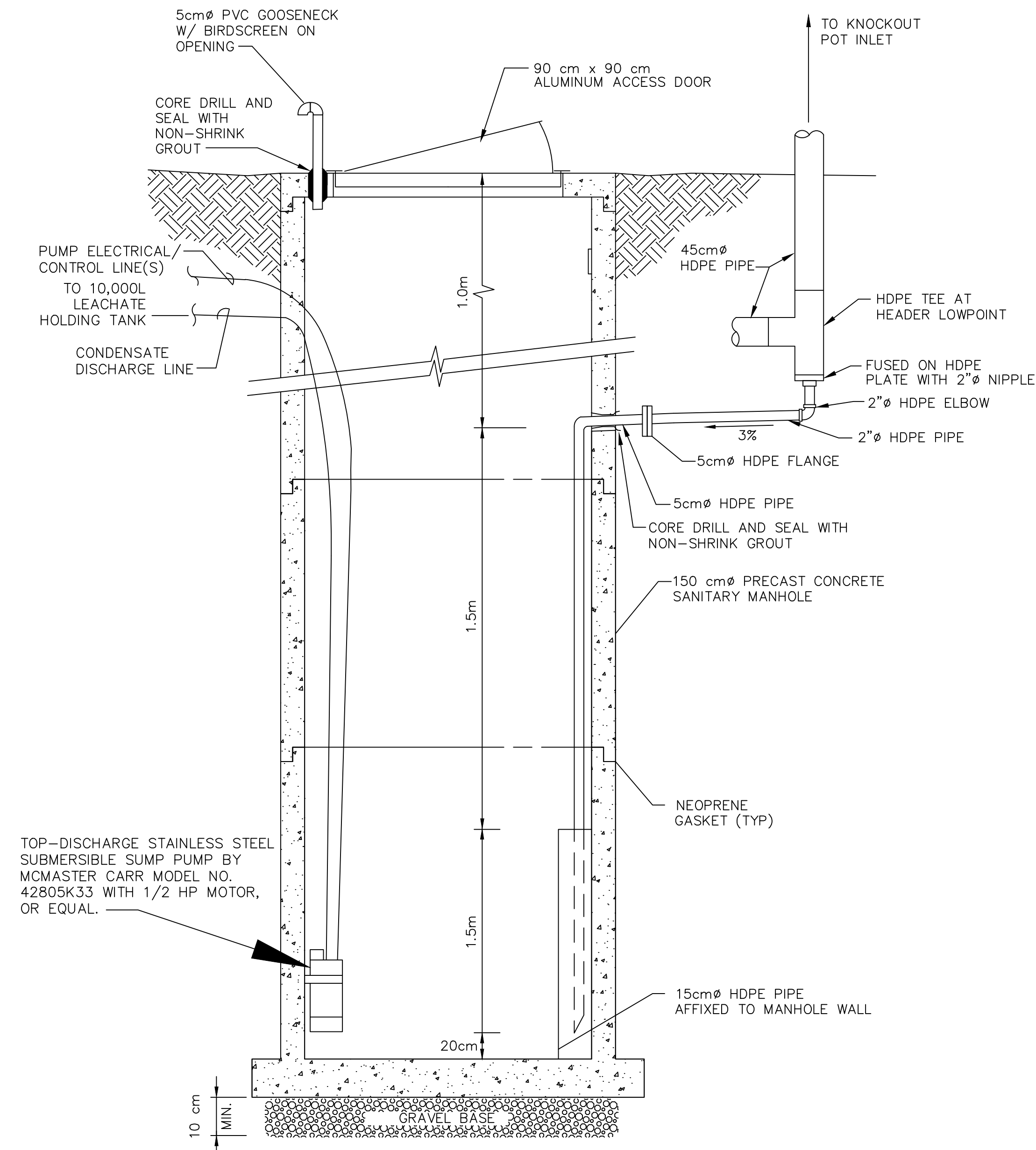
CK- BY	DESCRIPTION	DATE	REV.

SHEET TITLE	PROJECT TITLE
DETAILS	GCCS CONCEPTUAL DESIGN
	SAN CRISTOBAL LANDFILL

CLIENT
BATTELLE MEMORIAL INSTITUTE
505 KING AVENUE COLUMBUS, OHIO 43201

SCS ENGINEERS
2520 WHITEHALL PARK DRIVE, SUITE 450 CHARLOTTE, NORTH CAROLINA 28273 PHONE: (704) 504-3107 FAX: (704) 504-3174
PROJ. NO. 06218001.00 DWN. BY: JLD CHK. BY: JLD
C/A RW BY: JLD APP. BY: JLD

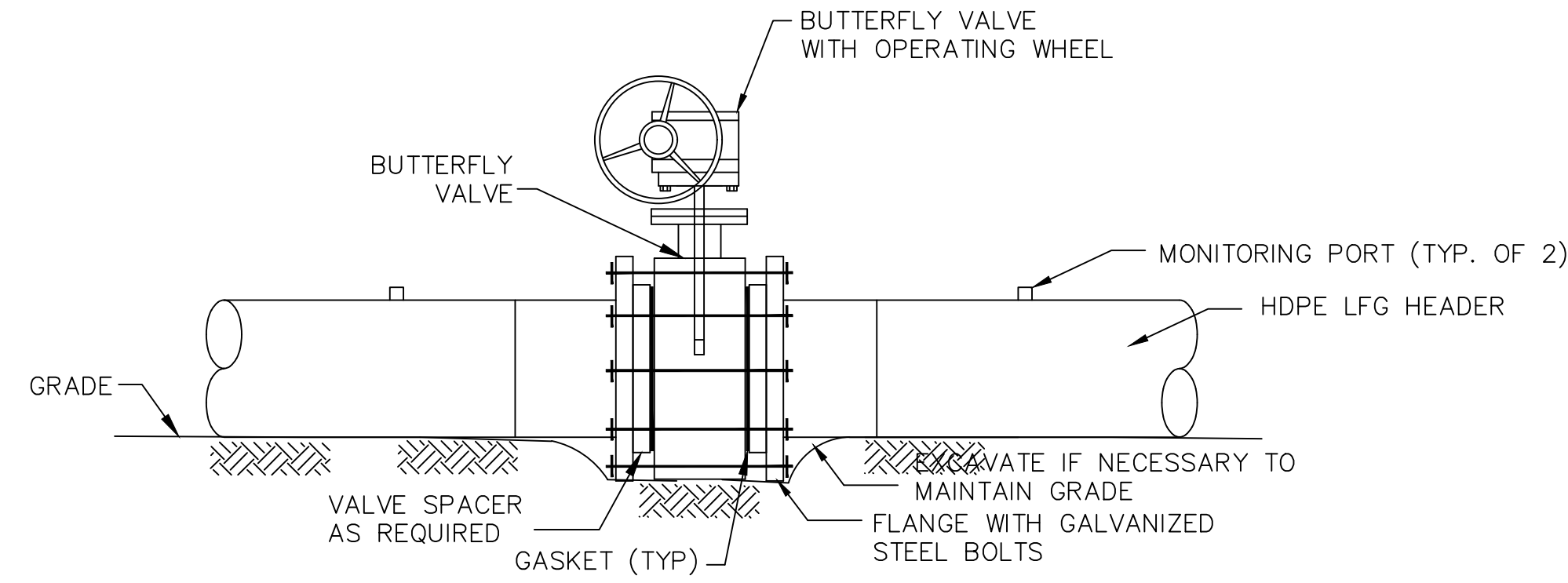
CADD FILE: SHEET 4 GCCS
DATE: AUG 2018
SCALE: NOT TO SCALE
DRAWING NO.



- NOTES:**
1. IN LIEU OF INSTALLING SUBMERSIBLE PUMP, A STANDPIPE MAY BE INSTALLED SO THAT MANHOLE CAN BE SERVICED BY A VACUUM TRUCK.
 2. PAINT EXTERIOR AND INTERIOR SURFACES OF MANHOLE WITH A WATER PROOF COATING.
 3. CONTRACTOR TO FIELD-VERIFY HEADER DEPTH AT LOW POINT PRIOR TO ORDERING SUMP. SUMP INLET AND OVERALL DEPTH COULD VARY DEPENDING ON ACTUAL HEADER DEPTH.
 4. LFG PIPING SHOWN ROTATED FOR CLARITY. SEE SITE PLAN FOR ORIENTATION.
 5. SUMP PUMP TO BE INSTALLED PER MANUFACTURER'S RECOMMENDATIONS. PUMP LEVEL TO BE SET SO THAT LIQUID LEVEL IN SUMP SHALL, AT A MINIMUM, NO EXCEED THE TOP OF THE OVERFLOW.

CONDENSATE SUMP
N.T.S.

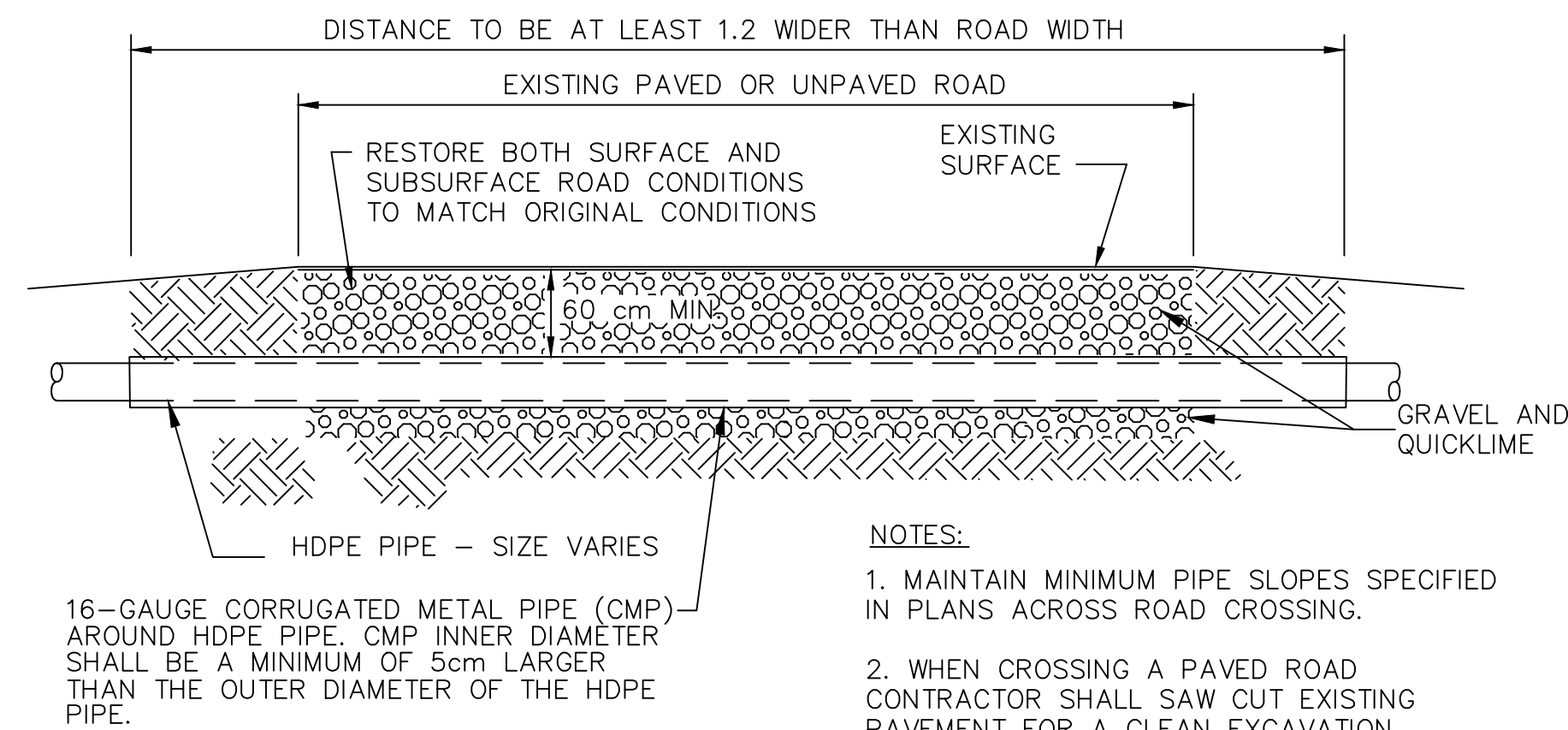
1
3 7



- ISOLATION VALVE NOTES:**
1. ISOLATION VALVES SHALL BE BUTTERFLY BUBBLE TIGHT, WAFER DESIGN, WITH A PVC BODY, NITRILE SEAT AND COMPATIBLE WITH FLAT FACE FLANGE.
 2. PVC FLANGE GASKETS SHALL BE FULL-FACE NEOPRENE.
 3. WRAP AND TAPE VALVE, FLANGE AND BOLTS IN POLYETHYLENE SHEETING PRIOR TO BACKFILLING.
 4. PROVIDE 15cm \varnothing SDR17 PVC PIPE CASING AROUND SAMPLE PIPE FOR PROTECTION.
 5. MONITORING PORTS AT BUTTERFLY VALVES SHALL BE QUICK CONNECTS RYAN HERCO PART NO. 0812-002. FOR INFORMATION, CONTACT RYAN HERCO AT (800)-848-1141.

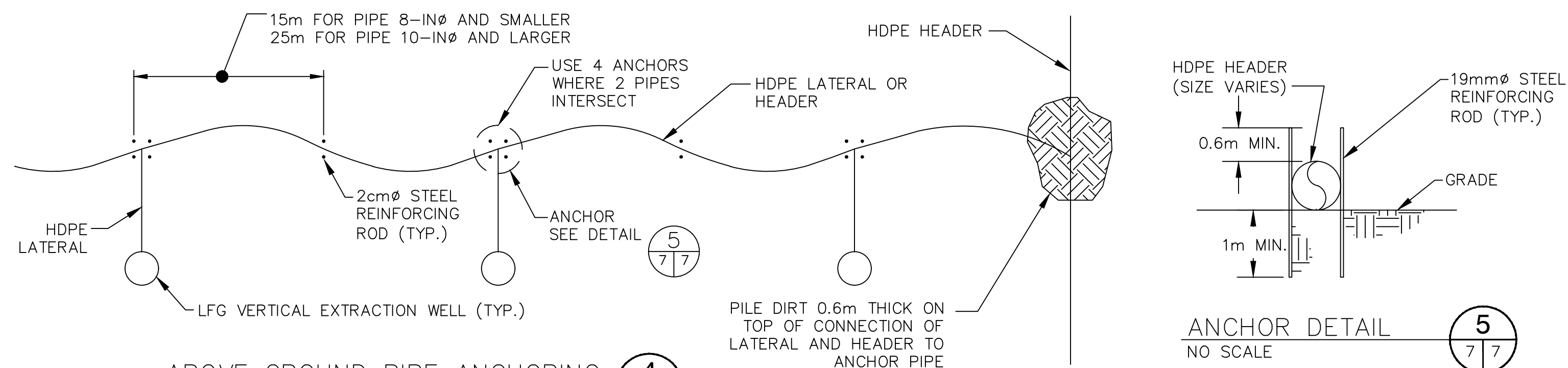
ISOLATION VALVE DETAIL
NO SCALE

2
3 7



ROAD CROSSING DETAIL
N.T.S.

3
3 7



ABOVE GROUND PIPE ANCHORING
N.T.S.

4
3 7

NOT FOR CONSTRUCTION

CK BY	DESCRIPTION	REV	DATE

SHEET TITLE	PROJECT TITLE
DETAILS	SAN CRISTOBAL LANDFILL
GCCS CONCEPTUAL DESIGN	

CLIENT
BATTELLE MEMORIAL INSTITUTE
505 KING AVENUE
COLUMBUS, OHIO 43201

SCS ENGINEERS
2520 WHITEHALL PARK DRIVE, SUITE 450
CHARLOTTE, NORTH CAROLINA 28273
PHONE: (704) 504-3107 FAX: (704) 504-3174
PROJ. NO. 06218001.00
TASK NO. JLD
DWG. BY: JLD
C/A R/W BY: JLD
APP. BY: JLD

CADD FILE:
SHEET 5 GCCS
DATE:
AUG 2018
SCALE:
NOT TO SCALE
DRAWING NO.

