

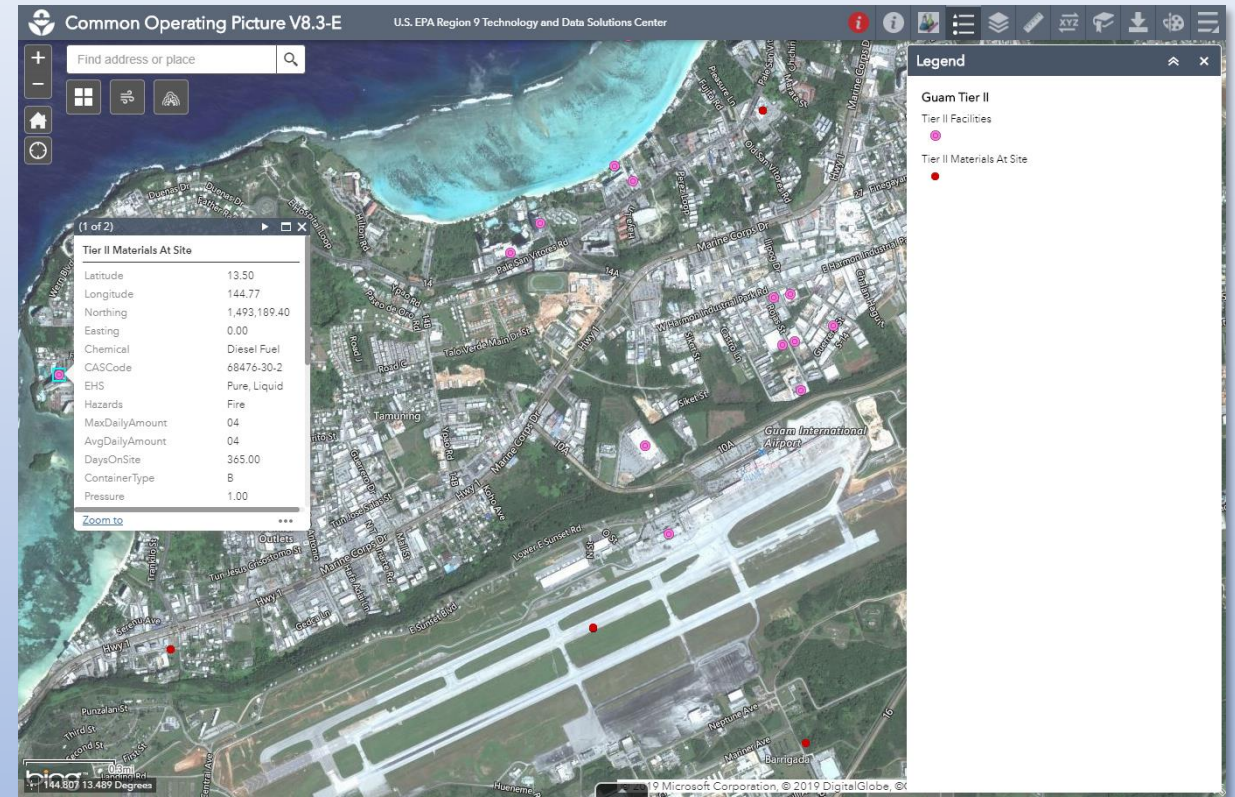
R9 Common Operating Picture



Greg Bazley, EPA
Region 9 Emergency Planning & Preparedness
Jan. 29, 2020

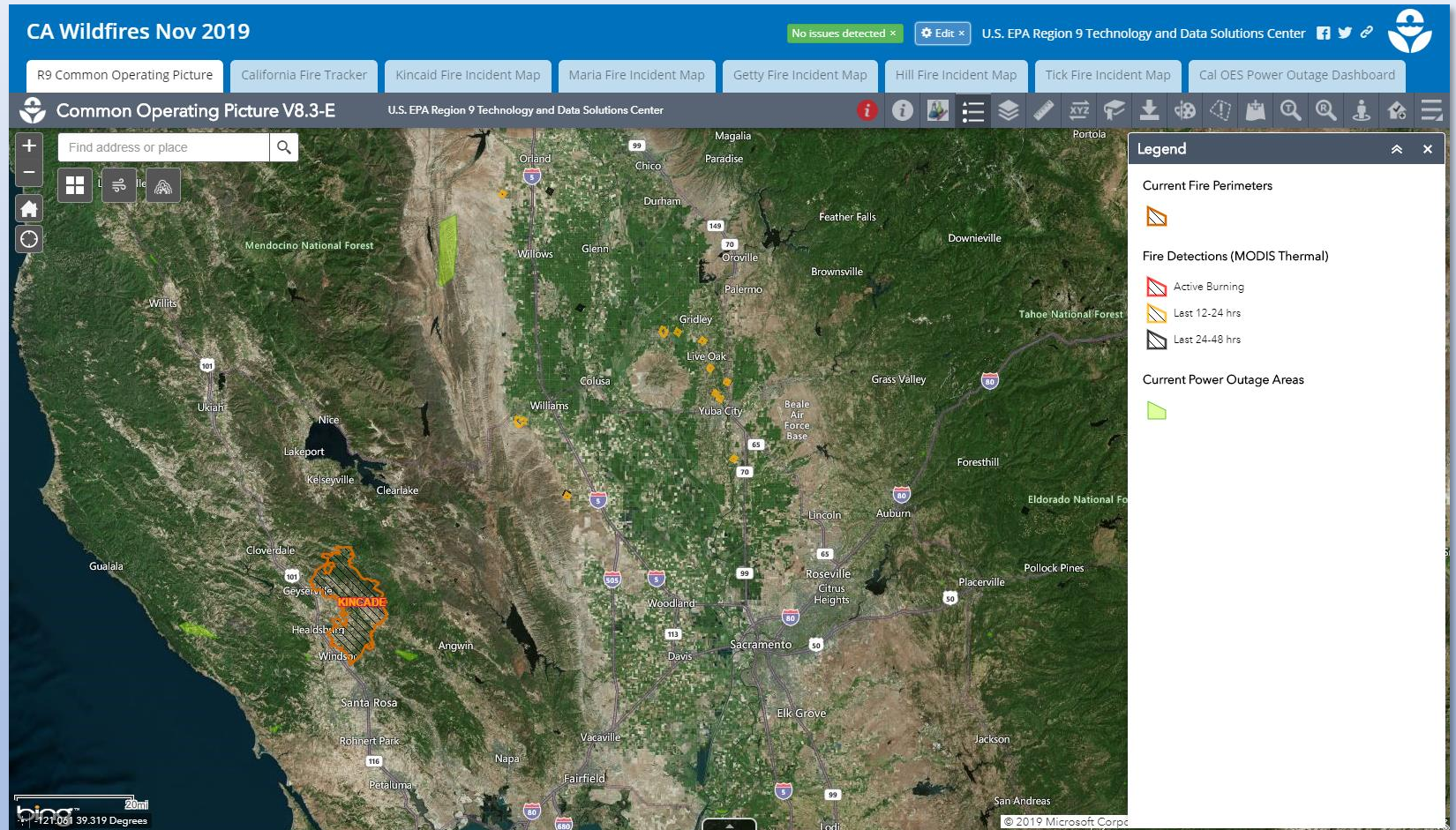
What is the COP?

- Main portal for geospatial information about Region 9
- Provides Situational Awareness for Responses
- Used for Planning and Preparedness



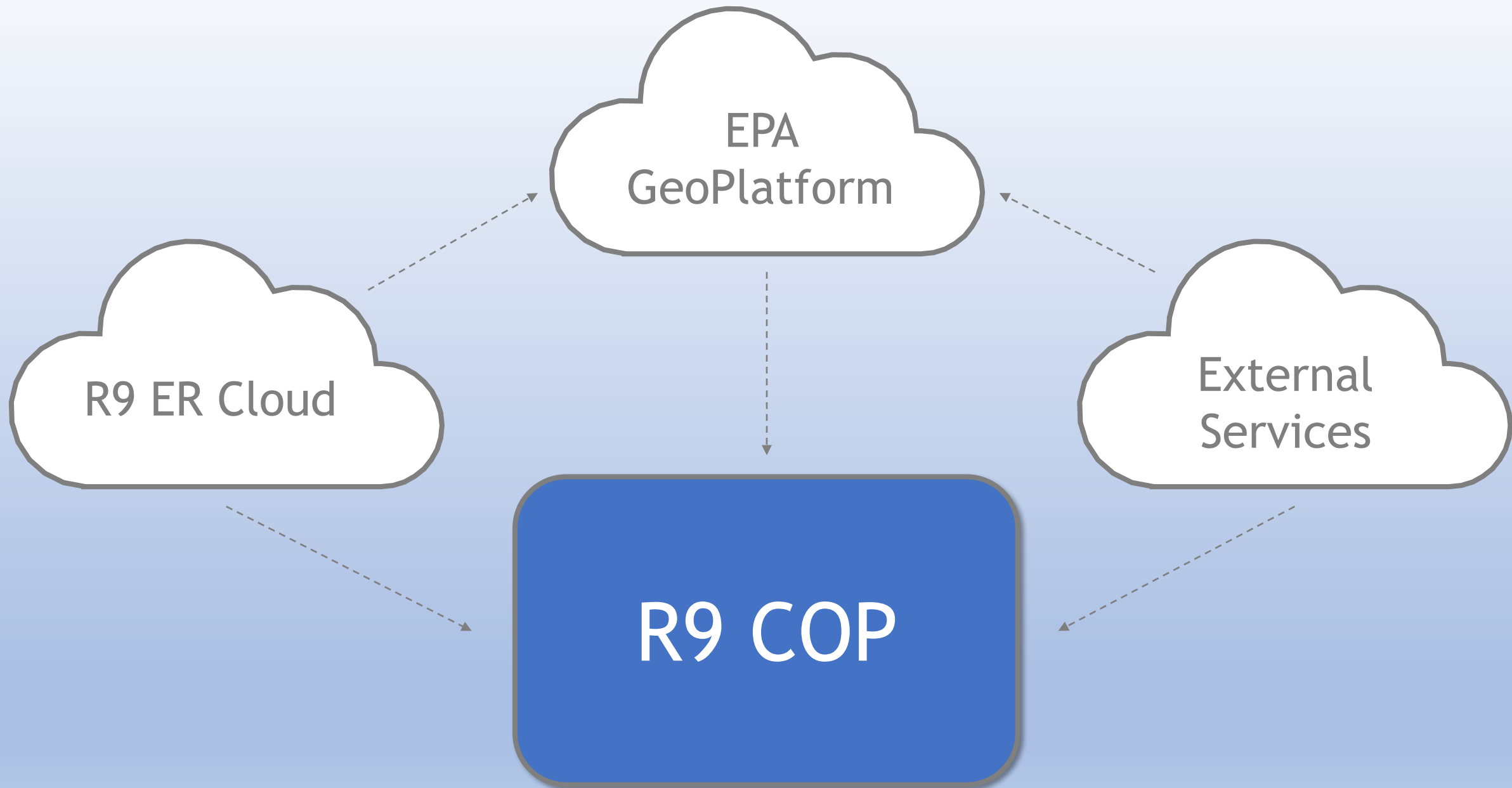
During a Response:

- Map is re-centered
- Important relevant layers are set to default “ON”
- Internal incident-specific Story Map is launched
- New layers/services added as they become available
- Performance is monitored

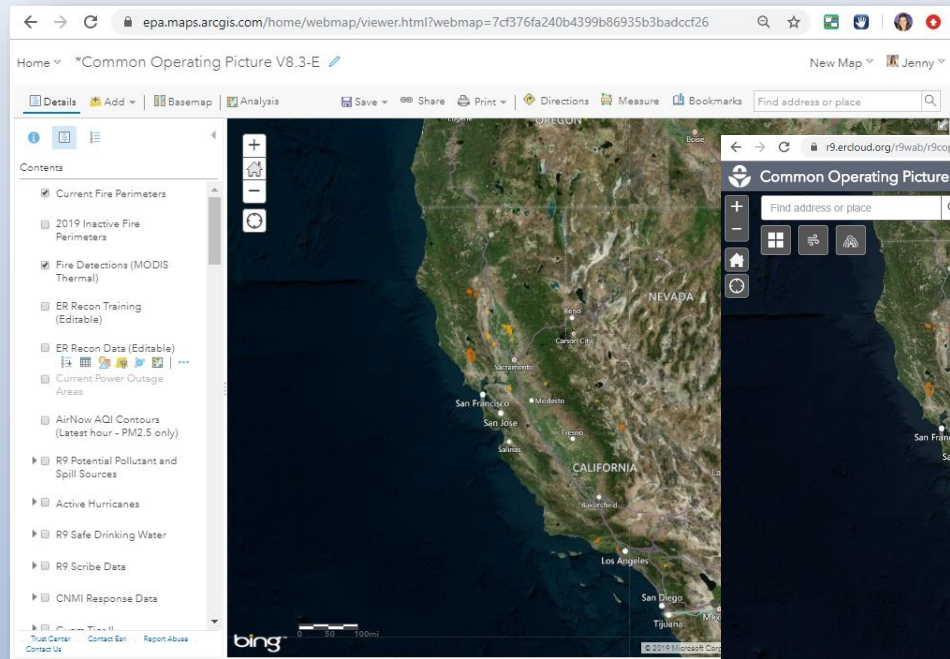


Support for R9 COP During Non-Response Time

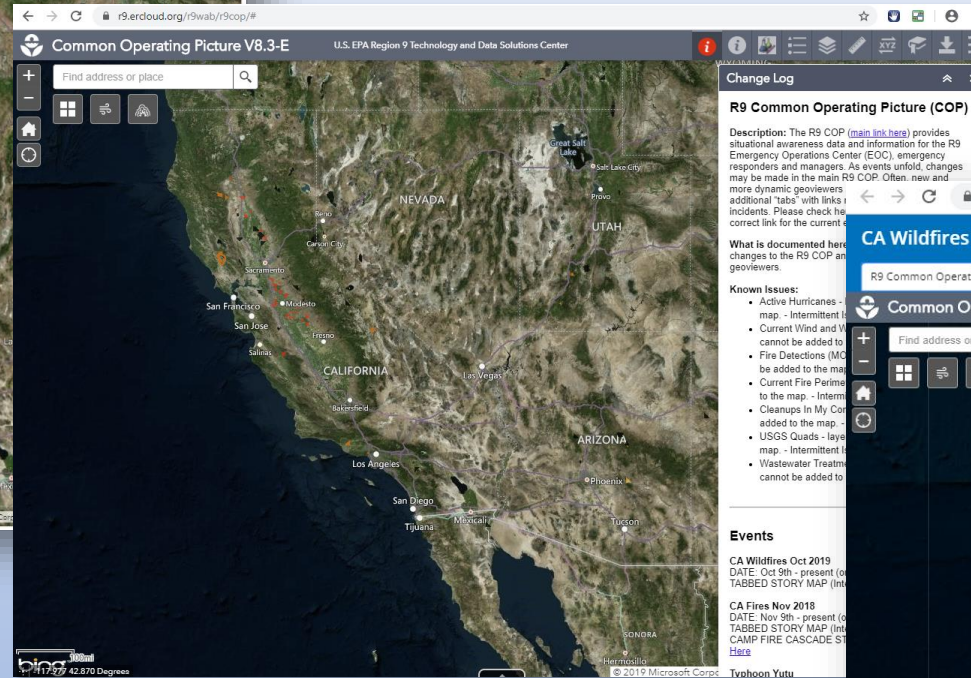
- Update datasets
- Improve features
- Fix bugs
- Test and Maintain
- Clean-up & Archiving



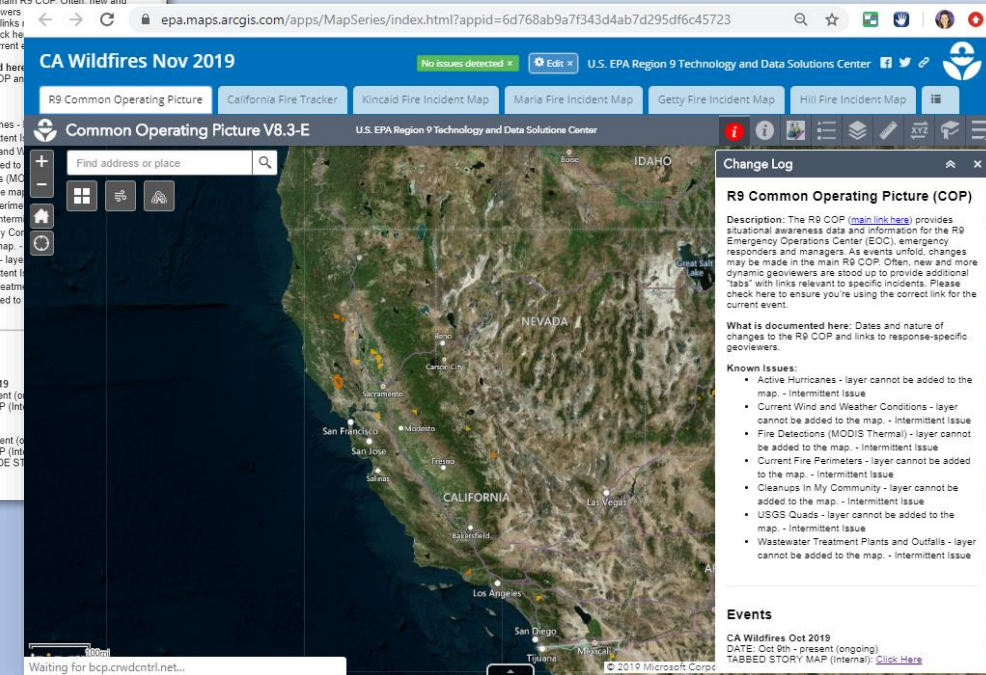
Web Map vs Map App vs Story Map...



Web Map



Map App



Story Map

Get to the R9 COP

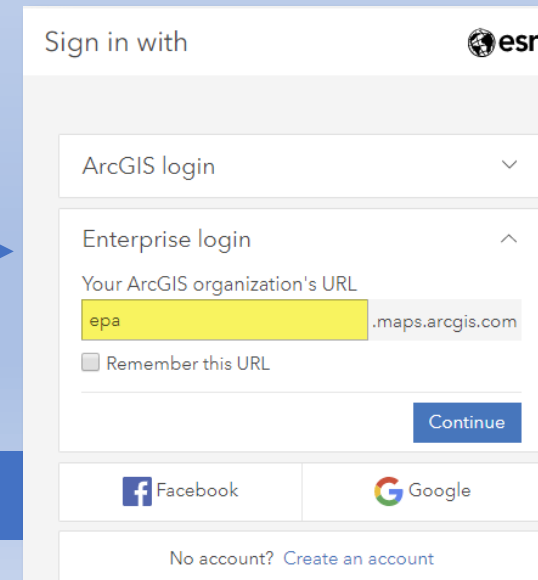
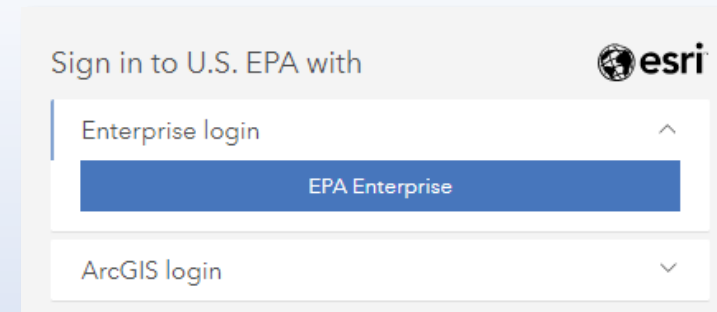
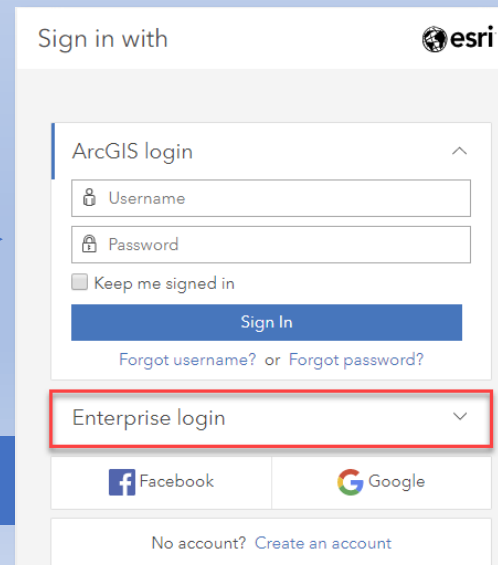
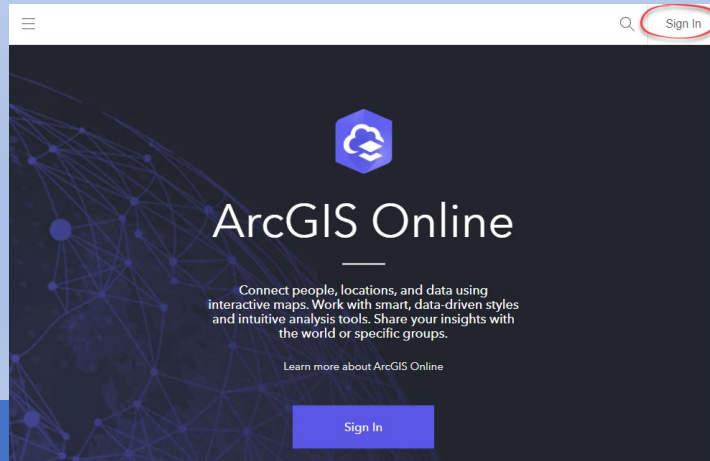
Option 1: Direct Access:

<https://r9.ercloud.org/r9wab/r9cop>

Option 2: Access through the EPA Geoplatform:

<https://epa.maps.arcgis.com/>

Option 3: Just type “arcgis.com” in your browser



Access to the R9 COP

- How do you get access? -- You belong to the R9 ER Cloud Group in the Geoplatform
- Who already has access? -- You can look at the Members of the group
- Who can have access? -- Anyone in EPA, Contractors, Partners
- How do I know which COP to use? How many are there? -- R9 COP, Guam COP, CMNI COP, Hawaii COP, Am Sam COP

Interface Overview

Common Operating Picture V8.3-E U.S. EPA Region 9 Technology and Data Solutions Center

Find address or place

Fire Perimeters: TABOOSE

Incident Name	TABOOSE
Agency	USFS
Comments	
Active	Y
Map Method	Infrared Image
Current Date	9/23/2019, 8:00 PM
Unique Fire ID	2019-CAINF-002018
Fire Year	2019
POO Owner Unit	CAINF
Acres	10,296.17
Complex Name	
Fire Code	MQ8E
POO Responsible Unit	CAINF

Zoom to

Current Fire Perimeters | Fire Detections (MODIS Thermal) | Active RMP Facilities

Options Filter by map extent Zoom to Clear selection Refresh

EPAFacilityID	FacilityName	MarplotID	CameoID	RMPID	FacilityStr1	FacilityStr2	FacilityCity	FacilityState	Facility
100000000250	Aurora Cooperative - Upland			1,000,078,669	Nebraska Spur 31A		Upland	NE	6898
100000000875	Clearwater Coop			1,000,076,758	9700 S 135th W		Clearwater	KS	6702
100000000882	Cox City Processing			1,000,057,305	8 miles E & 2 miles	1747 CR 1530	Push Springs	OK	7308

About

UNITED STATES ENVIRONMENTAL PROTECTION AGENCY

This Geoviewer application provides situational awareness in support of emergency planning, preparedness and response in Region 9

For more information contact [Cheryl Henley](#)

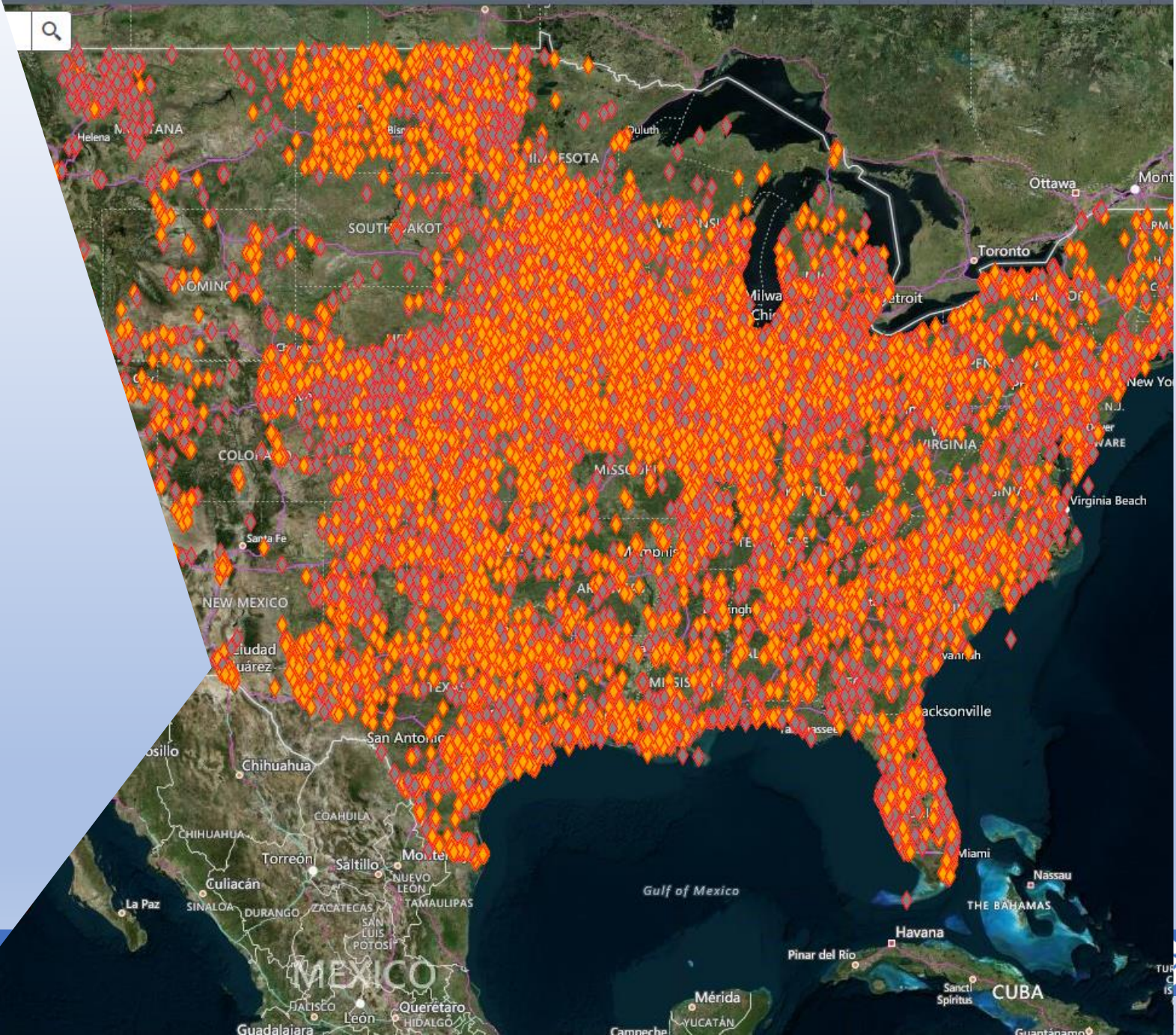
[Web AppBuilder](#) for ArcGIS (Developer Edition) 2.12
Kernel Version: 2.12

[USER GUIDE](#)

Risk Management Plan (RMP) Widget



RMP Identify



RMP Facility Layer Turned On

Common Operating Picture V8.3-E U.S. EPA Region 9 Technology and Data Solutions Center

Find address or place

Layer List

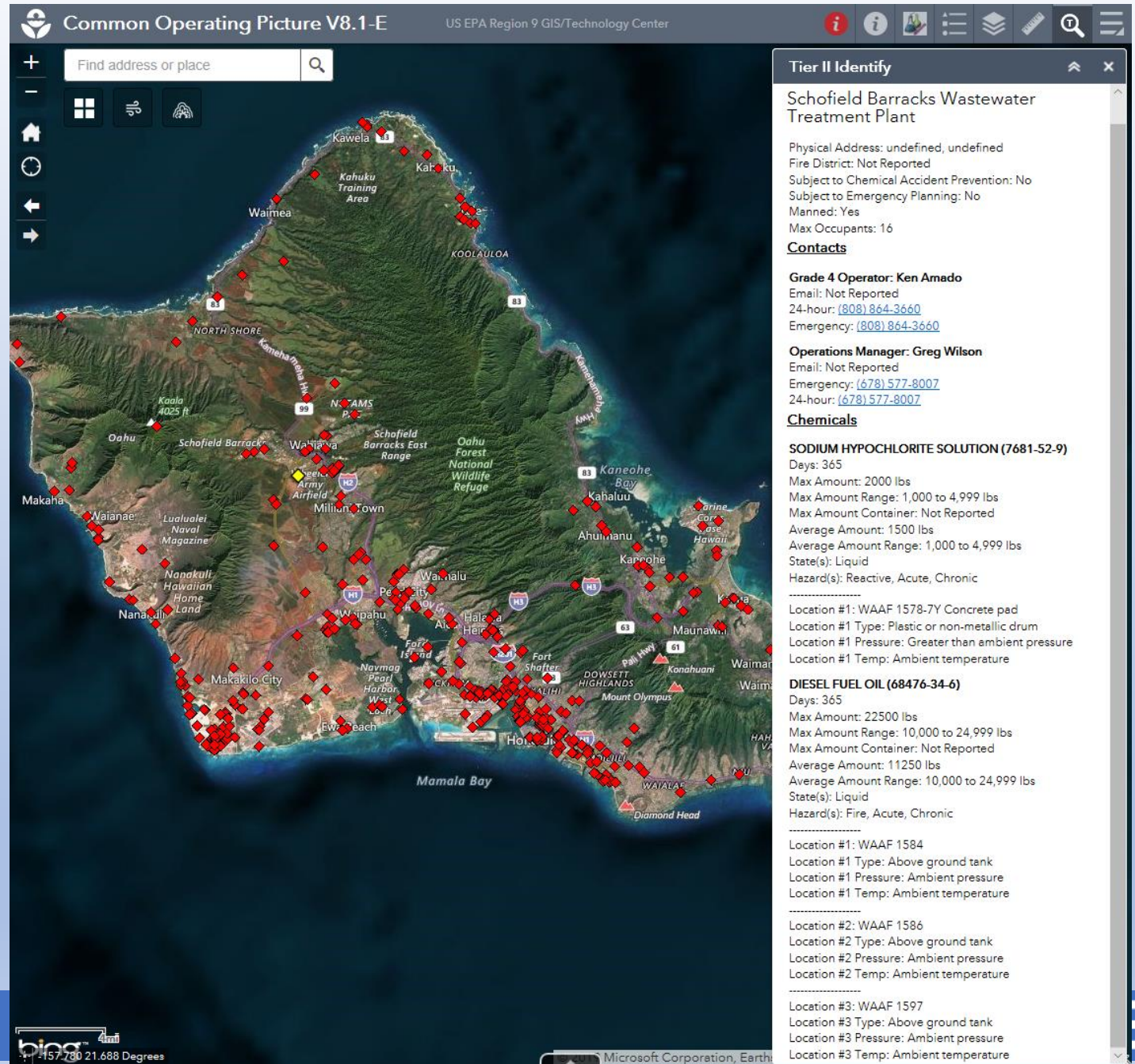
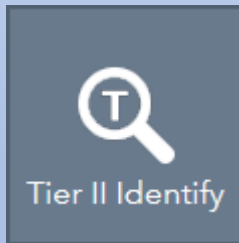
- ☐ R9 Administrative Boundaries
- ☐ Active Sites from Response.epa.gov
- ☐ WebEOC Hotline Log
- ☒ R9 Potential Pollutant and Spill Sources
 - ☒ RMP Facilities
 - ☐ FRP Facilities (2014)
 - ☐ TRI Facilities (2014)
 - ☐ Tier II Facilities
 - ☐ Removal Sites (2019)
 - ☐ NPL Sites
 - ☐ NPDES
 - ☐ CA Power Plants
 - ☐ Liquid Natural Gas Terminals
 - ☐ Break Out Tanks

RMP: Ultramar Inc. d/b/a Valero Wilmington Refinery

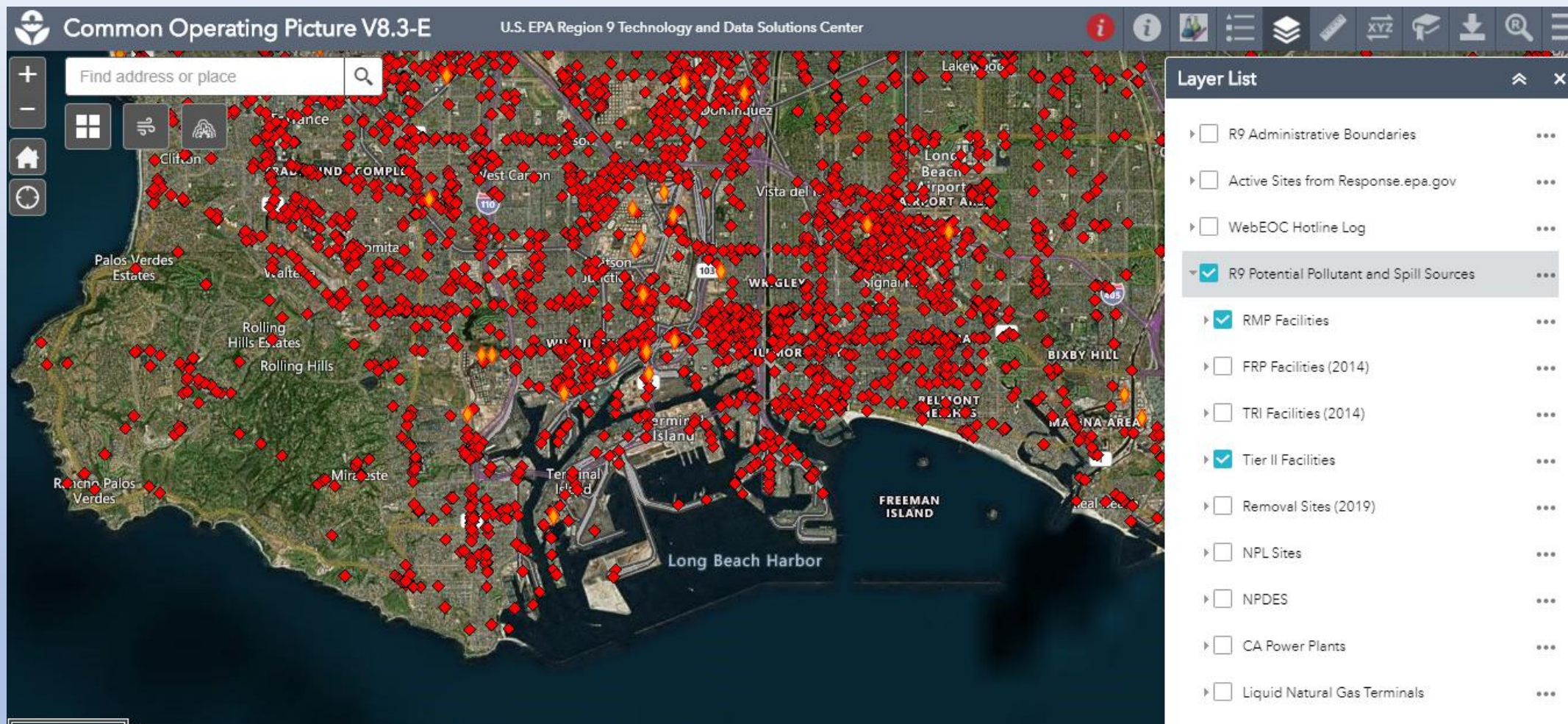
EPA Facility ID	10000080636
Facility Name	Ultramar Inc. d/b/a Valero Wilmington Refinery
Marplot ID	
Cameo ID	
RMP ID	1,000,078,391
Street 1	2402 East Anaheim Street
Street 2	
City	Wilmington
State	CA
Zip Code	90744
CountOfFacilityID	7
Zoom to	

Tier II Widget

- EPCRA data from states
- Not standardized nationally
- Updated once a year
- Available on Github



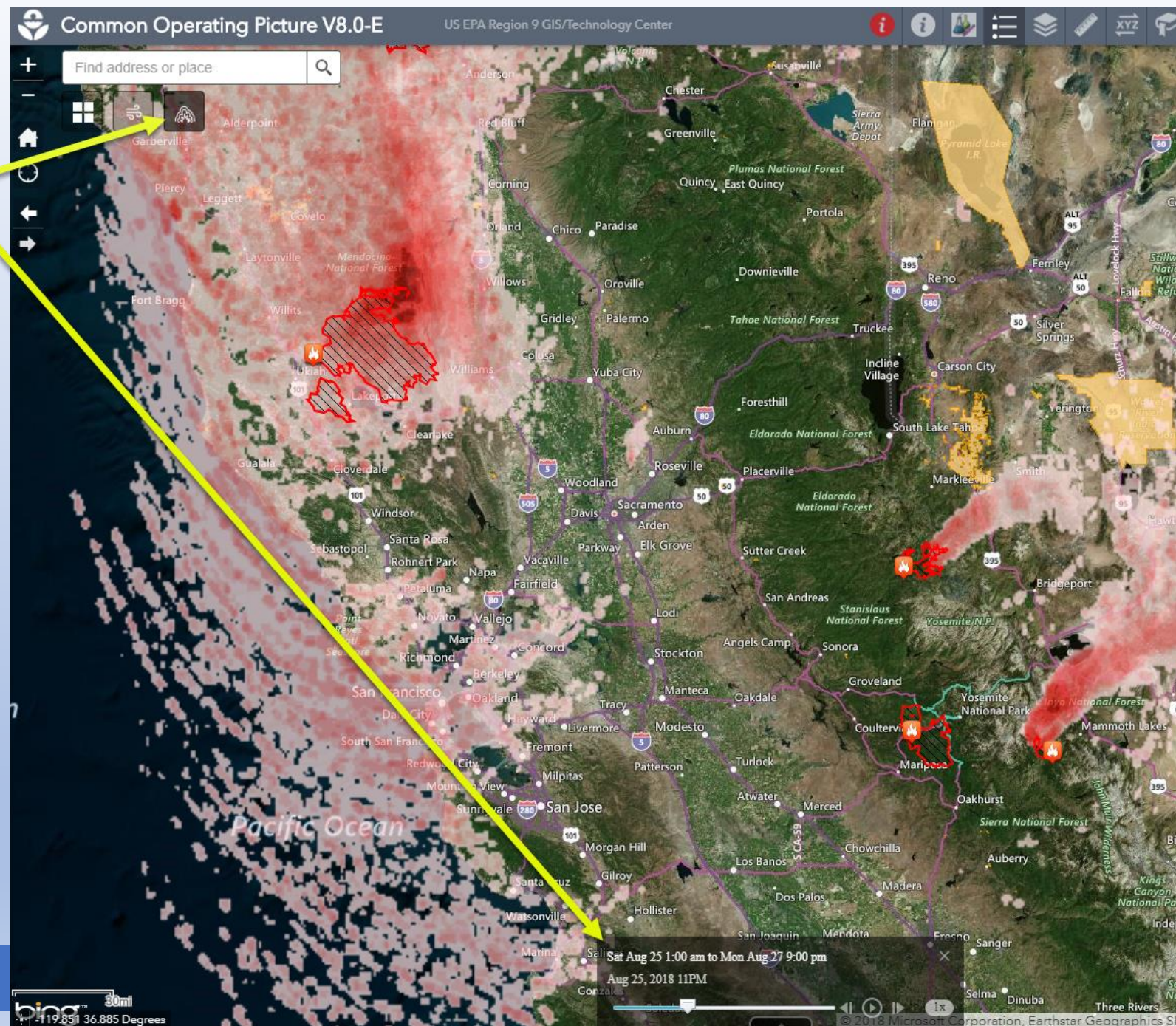
Tier II Facilities Layer Turned On



Smoke Widget

- Helps anticipate air quality issues
- Visualize where fires are still burning
- Available on Github

Smoke model with time slider

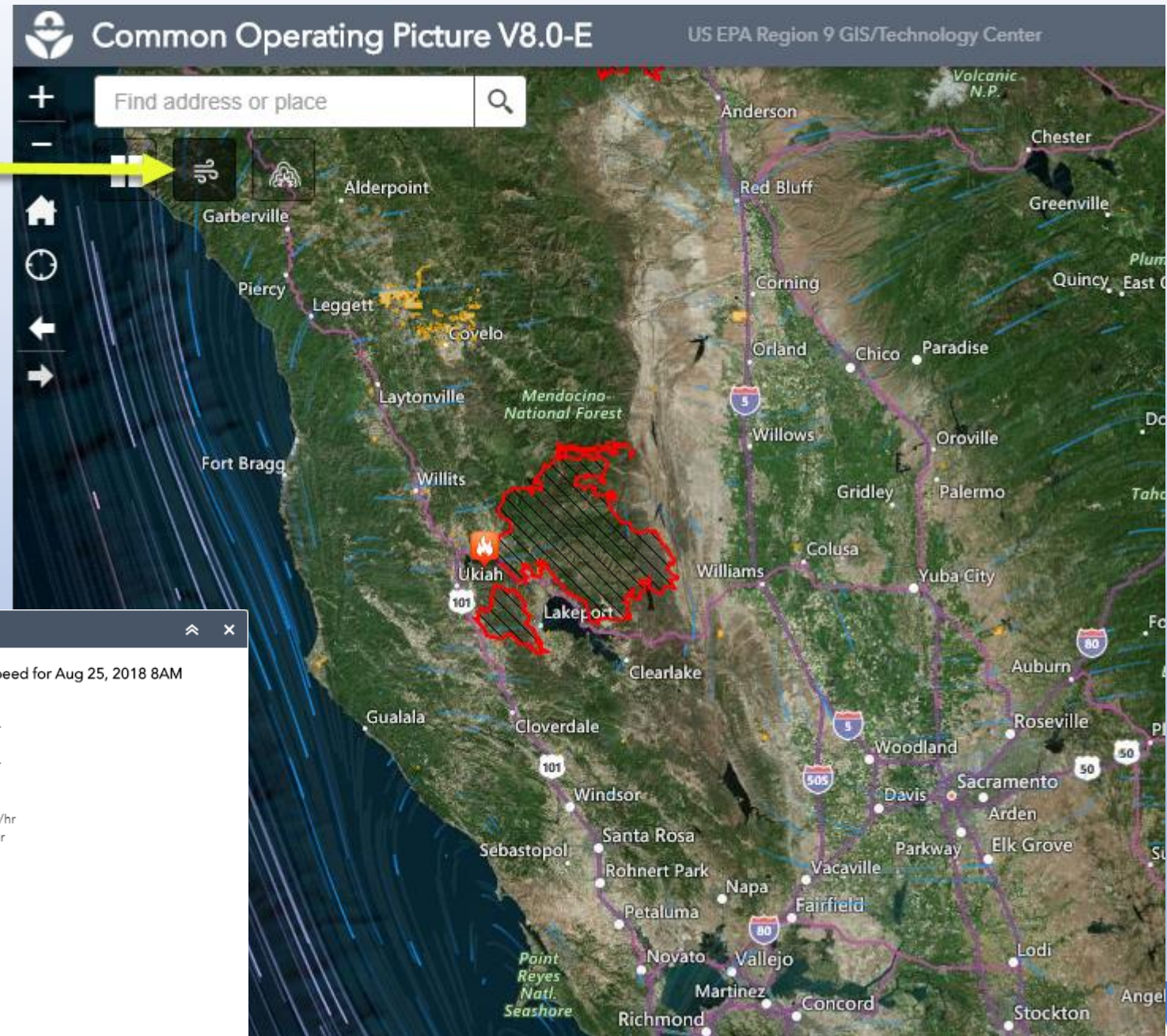
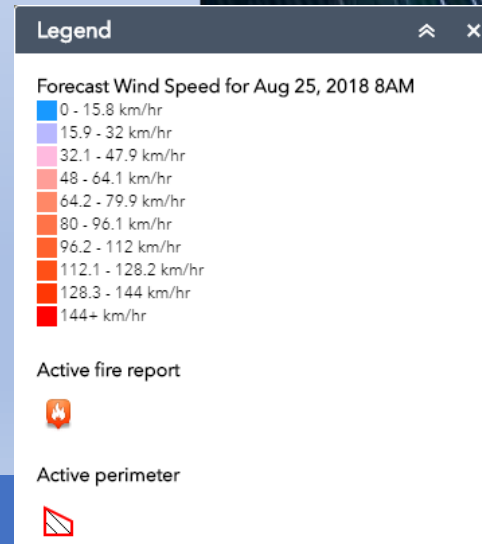


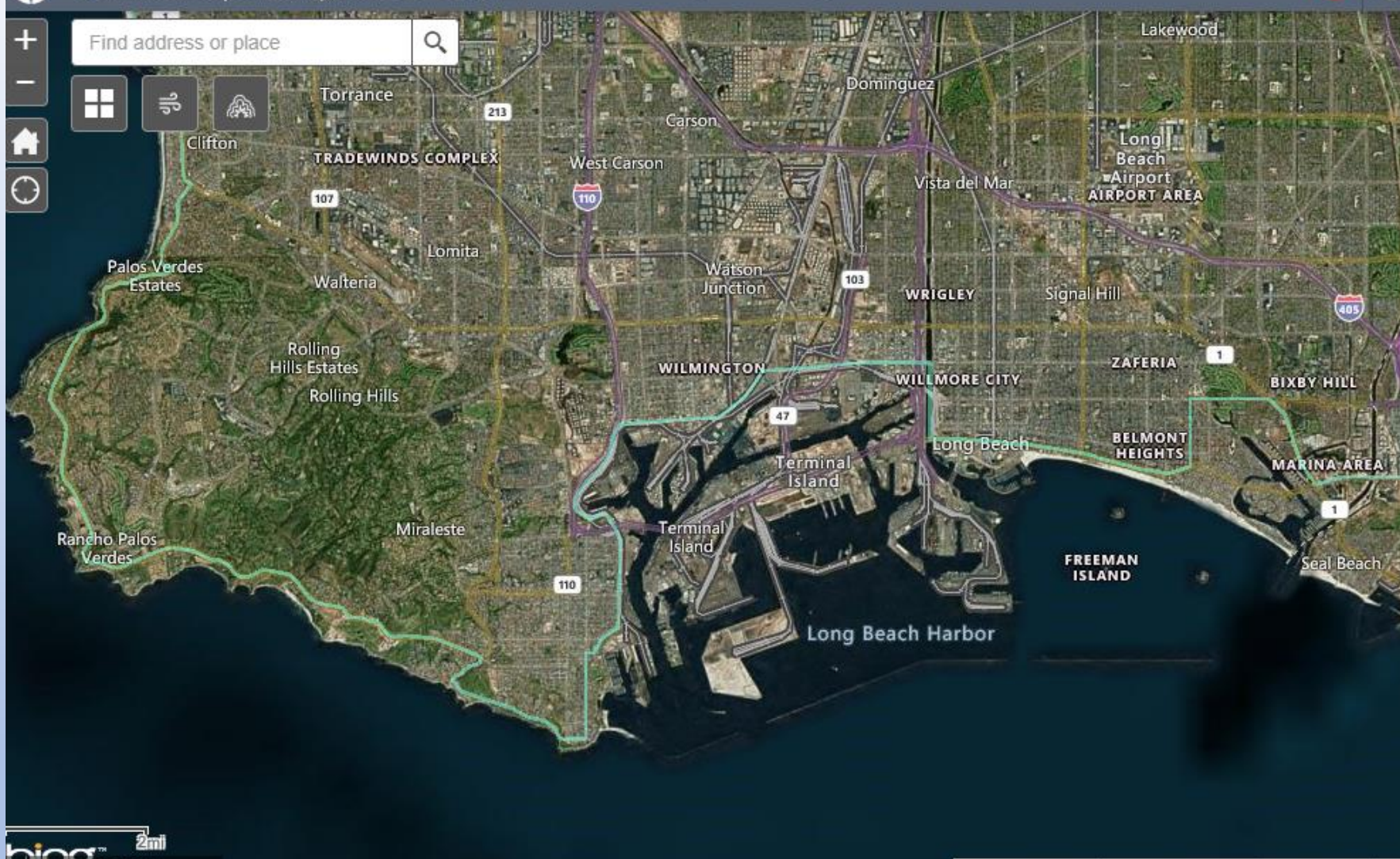
<https://github.com/USEPA/R9-Widgets/tree/master/Smoke>

Wind Widget

- Data updated every 3 hours
- Shows wind for entire planet
- Shows both wind speed and direction
- Next step - evaluate different scales to account for terrain
- Available on GitHub

Wind forecast
updated every
3 hours





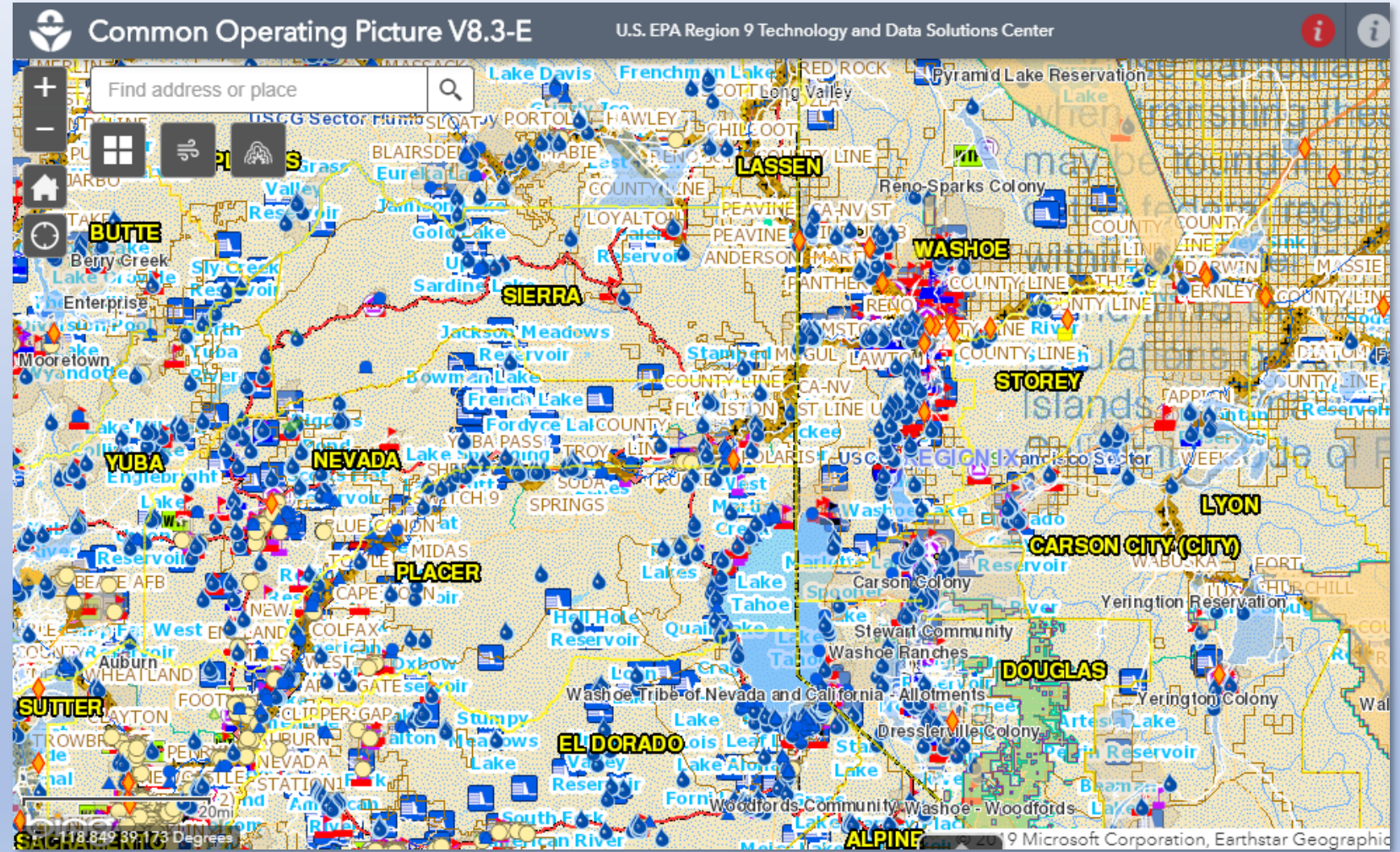
Layer List

Layers

- ☐ Current Fire Perimeters ...
- ☐ 2019 Inactive Fire Perimeters ...
- ☐ Fire Detections (MODIS Thermal) ...
- ☐ CalOES Fire/Traffic Camera Locations ...
- ☐ CalOES Fire/Traffic Camera Viewsheds ...
- ☐ ER Recon Training (Editable) ...
- ☐ ER Recon Data (Editable) ...
- ☐ Current Power Outage Incidents ...
- ☐ Current Power Outage Areas ...
- ☐ AirNow AQI Contours (Latest hour - PM2.5 only) ...
- ☒ R9 Agency Boundaries ...
 - ☒ U.S. Coast Guard Boundary Lines, Region 9 Coastline, 2013, R9 ...
 - ☐ Air Districts, Nevada, 2007, R9 ...

Data Available

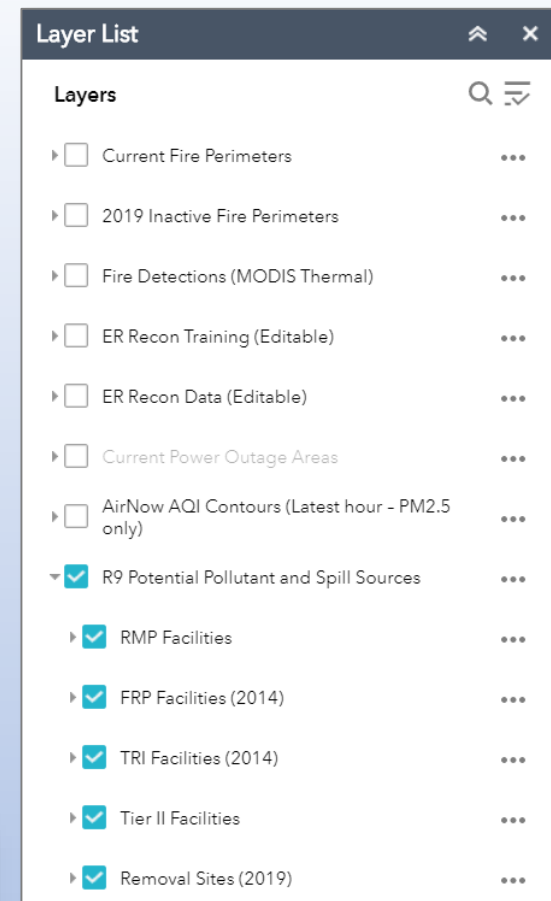
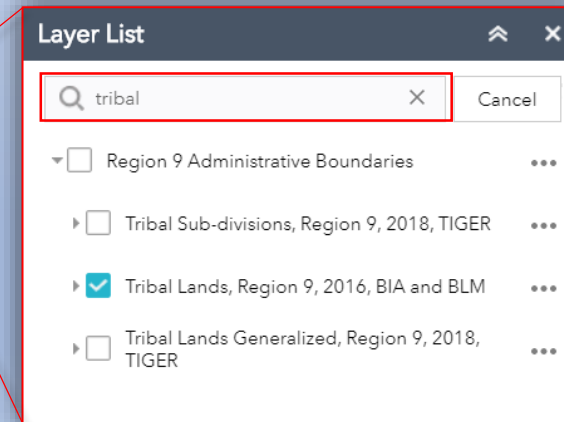
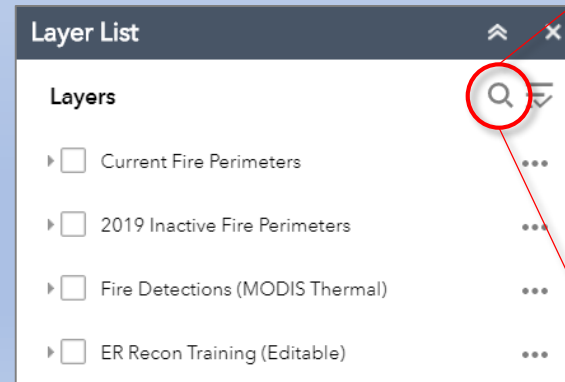
- 100's of layers
 - Fire data
 - Air quality data
 - Hurricanes/Tropical storms
 - Potential pollutant and spill sources
 - Drinking water
 - Scribe data**
 - Boundaries
 - Transportation
 - Hotline Log**
 - Etc...
- Some duplication
- Changes coming





Navigating the Layer List

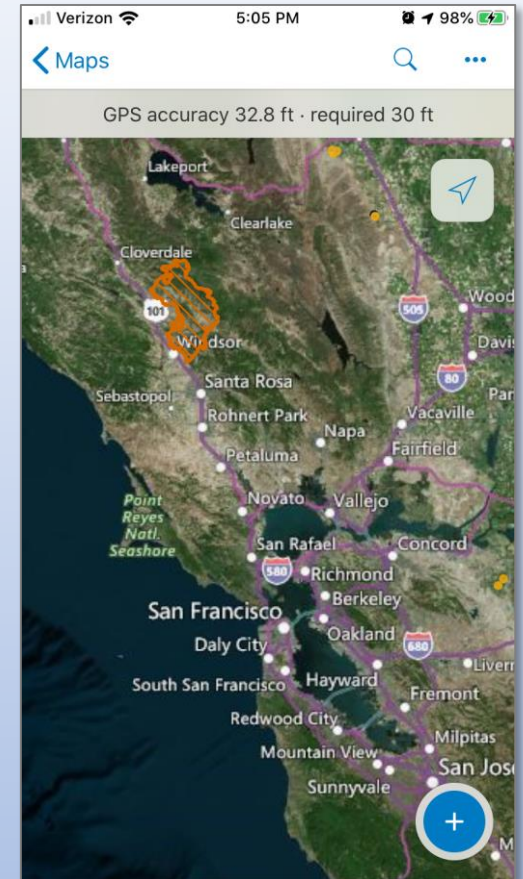
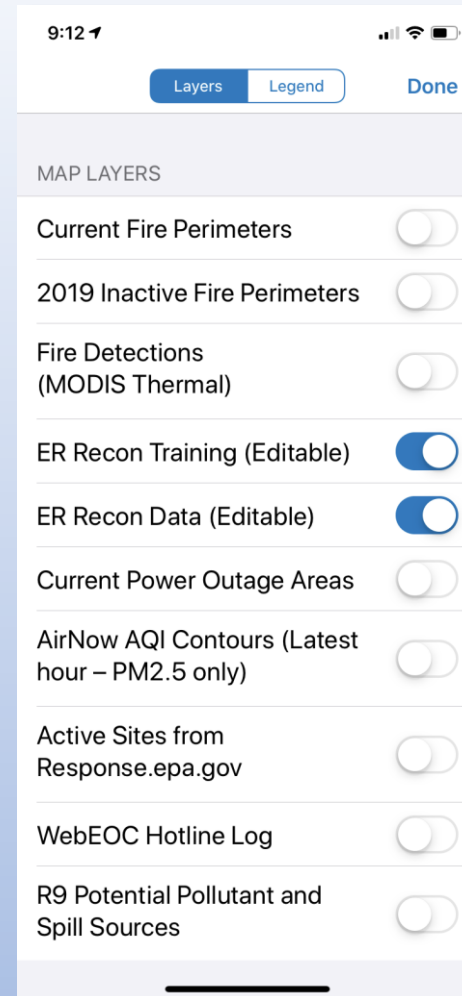
- Organization:
 - Individual layers at the top
 - Grouped map image layers (pre-configured services) at bottom
- Searching the list:
 - A quick way to find layers by name



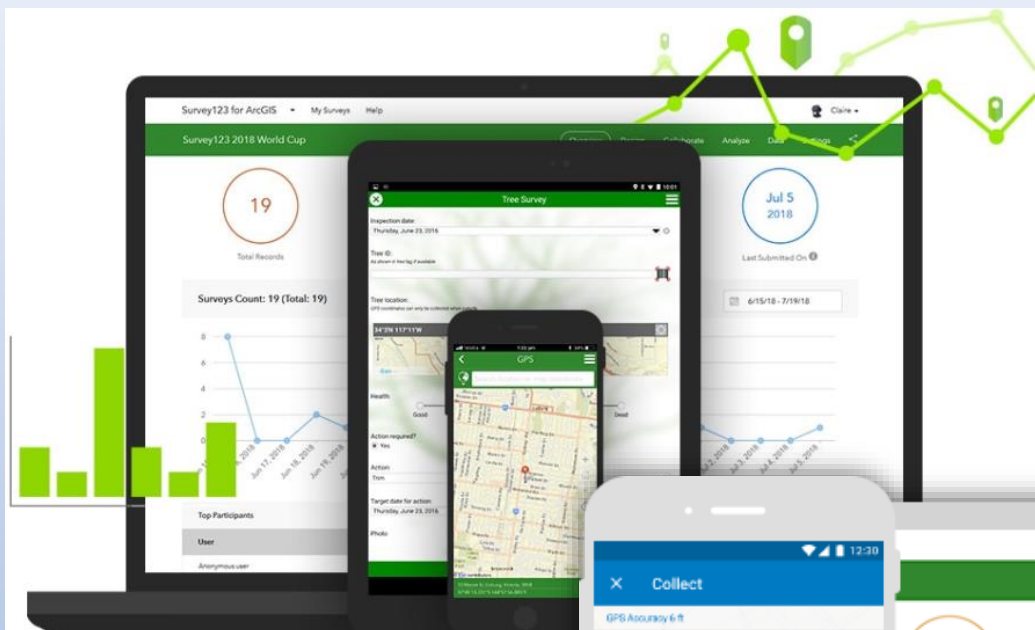


Mobile

- R9 COP App on Mobile Devices:
 - OK on iPad, not phone
- Using R9 COP on Collector for ArcGIS App:
 - Uses the web map (no widgets)
 - Data collected shows real-time in R9 COP app
- For Viewing data, not editing:
 - Use Explorer



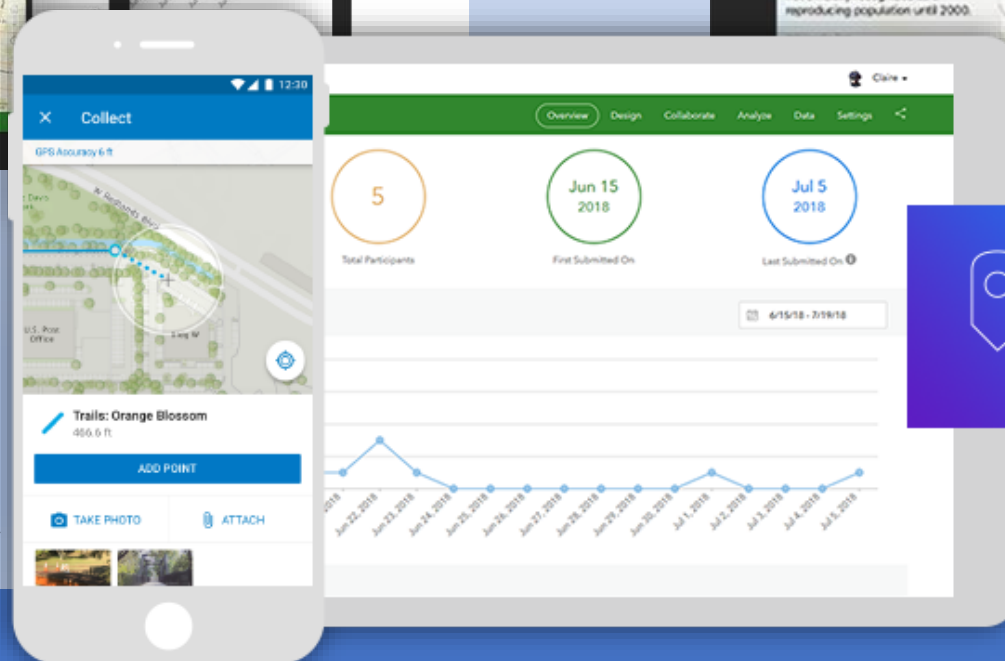
Additional Esri Mobile Apps



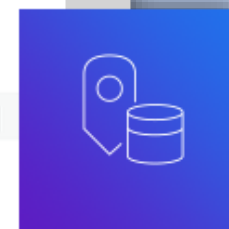
Survey123



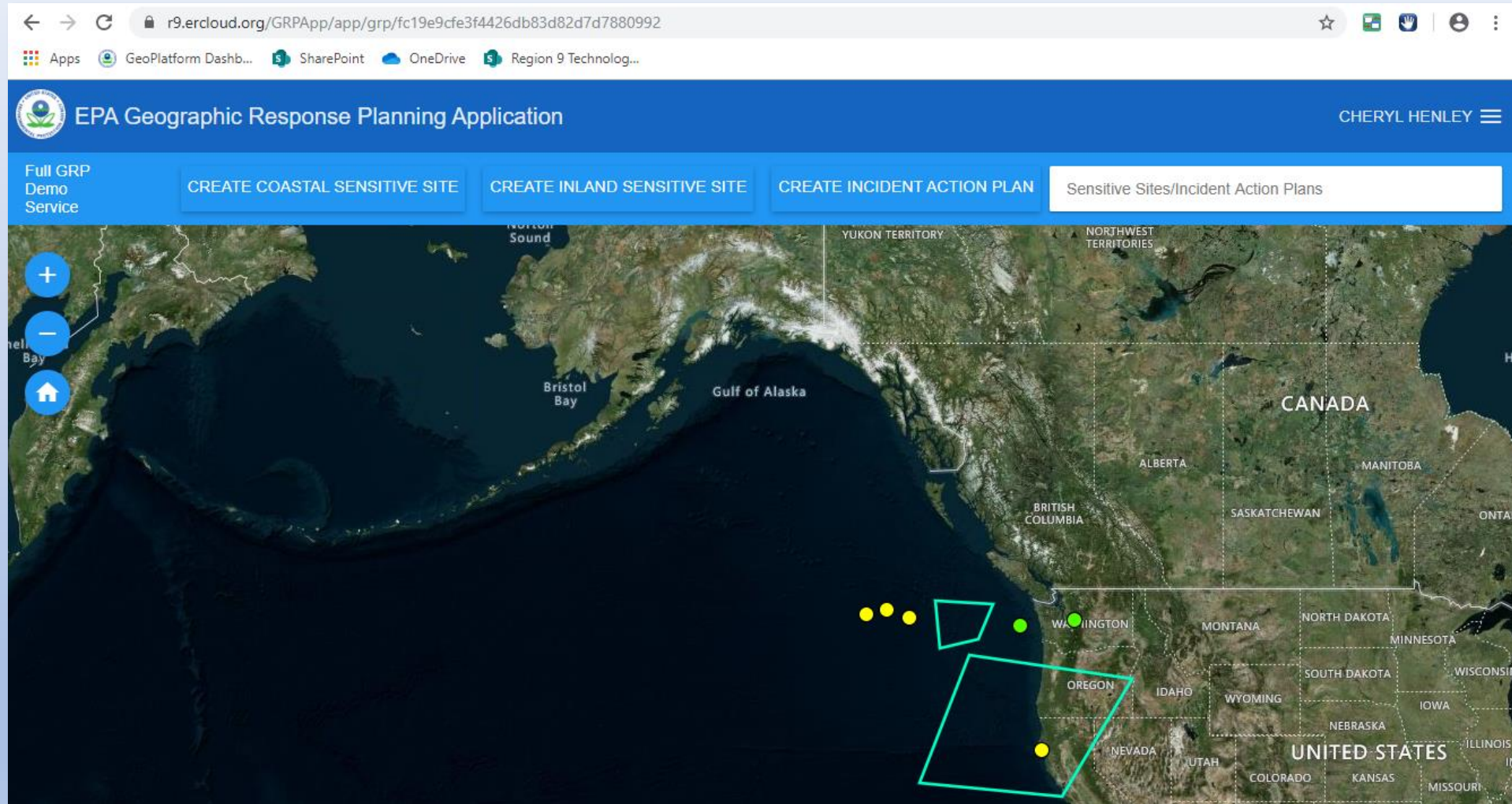
Explorer



Collector



Other Apps/Tools - Geographic Response Plans



<https://r9.ercloud.org/GRPApp>



Resources:

R9 Technology and Data Solutions Center website:

<https://intranet.epa.gov/9online/services/gis-tech-center>

Or go to 9online:



Contacts

EPA Region 9

Cheryl Henley
GIS Coordinator
Henley.Cheryl@epa.gov
415-972-3586

Stacy Takeda
IT Support Services
Takeda.stacy@epa.gov
415-972-3641

EPA OMS

Shea Caspersen
Data Scientist
Caspersen.shea@epa.gov
415-947-4578

Innovate! Inc.

Frank Roberts
Director, Information Technology
froberts@innovateteam.com
208-699-2712

Jenny Holder
GIS Developer
jholder@innovateteam.com
919-623-3420

Travis Bock
Geospatial Developer/Manager
tbock@innovateteam.com
757-201-8188

Dan Spinosa
Manager Geospatial/IT Development
dspinosa@innovateteam.com
208-290-4124

David Yarnell
Manager Geospatial/IT Development
dyarnell@innovateteam.com
208-610-9981

Rob Homsher
GIS Analyst
rhomsher@innovateteam.com
415-947-4579