



# EPA R5 SEMD Tribal Update

---

Ashley Fisseha

# Regional Tribal Office Updates

---

- Renamed “**Tribal and Multi-Media Programs Office**” instead of Tribal and International Affairs Office
  - Director – Alan Walts
  
- New Tribal Liaison covering Wisconsin – Paul Winters
  - Email: [Winters.Paul@epa.gov](mailto:Winters.Paul@epa.gov)
  - Phone: 312-353-4543
  
- Michigan coverage – Jenny Manville
  - Email: [Manville.Jennifer@epa.gov](mailto:Manville.Jennifer@epa.gov)
  - Work Phone: 231-941-0237; Mobile: 231-633-2725
  
- Minnesota coverage – Darrel Harmon
  - Email: [Harmon.Darrel@epa.gov](mailto:Harmon.Darrel@epa.gov)
  - Work Phone: 312-886-3890; Mobile Phone: 312-720-1904

# SEMD Tribal Staff Updates

---

## ➤ SEMD Coordinator Change – Ashley Fisseha

- Email: [Fisseha.Ashley@epa.gov](mailto:Fisseha.Ashley@epa.gov)
- Phone: 312-886-4494

## ➤ Role

- Coordination
  - Review ERs for potential impacts to Tribal lands, Tribal members, ceded territories, or other various means that potentially impact Tribes. Notify tribe(s)/OSC of potential impact.
- Consultation
- TEK & TCK
- Review EPA-Tribal Environmental Plans (ETEPs), PPGs
- Project Officer – manage SEMD grants for Tribes
- Events Coordination and Planning – TEPM, RTOC, etc.
- Remedial Program

# Ongoing Projects – Inventory for OEM

---

- The Tribal Waste and Response Steering Committee (TWAR SC) is a Federal U.S. EPA Tribal Partnership Group comprised of subject matter experts from federally recognized Tribes and Alaskan Native Villages from various US EPA regions. This committee produces a priority document for OEM every year. Its intention is to communicate the needs of Tribes, influence policy, and determine useful actions for the protection of health, culture, and natural resources in respect to OEM-related issues.
- TWAR SC requested of Office of Emergency Management:
  1. By 2021, complete an inventory of Tribes with an emergency management infrastructure in place. This should be a first step toward identifying resources necessary to more efficiently assist Tribal programs in developing their own capacity.
  2. By 2022, create a listserv for Tribal professionals specific to the activities of the Office of Emergency Management.

➤ RRT has been collecting 2 page fact sheets

## Fact Sheet: Lac Vieux Desert Band of Lake Superior Indians

Gogebic County, Michigan

**Michigan State Police,  
Emergency Management and  
Homeland Security Division  
(24-hour emergency  
notification):** (800) 292-4706

**Michigan Department of Health  
and Human Services Division of  
Environmental Health:**  
(800) 648-6942

**For public health emergencies,  
contact the Gogebic County  
Health Department:**  
(906) 667-0200

**Michigan Pollution Emergency  
Alert System [PEAS] Hotline  
(24 Hour):** (800) 292-4706

**Michigan Department of  
Environment, Great Lakes, and  
Energy Environmental  
Assistance Center (non-  
emergency):** (800) 662-9278

**EPA Planning OSC:**  
Kristina Miller  
Office: (312) 353-1057  
**Cell: (312)237-5685**  
E-Mail: miller.kristina@epa.gov

### CONTACTS

**Emergency: 911 / (906) 358-4313**

**Primary Tribal POC:** Beth Schrader, Environmental Officer, (906) 358-4577,  
beth.schrader@lvdtribal.com

**Tribal Environmental Response Coordinator:** James Williams Jr. (906) 358-4577

**LEPC Chair:** James Loeper 906-667-1118

**Tribal Chair:** James Williams, Jr. (906) 358-4577

**Tribal Manager:** James Williams Jr.

**Tribal Police:** (906) 358-4313

**Tribal Health Clinic:** (906) 358-4587

<https://www.lvdtribal.com>

**Watersmeet Township Police:** (906) 358-2048

**Watersmeet Township Central Dispatch:** (906) 875-6669 (non-emergency)

**Watersmeet Township Volunteer Fire Department:** (906) 358-4623 (non-emergency)

### RESERVATION DESCRIPTION

**County FIPS Codes:** MI.26.053 (Gogebic)

[Reservation Map]

**Land Area:** 2.31 miles

**Estimated Population:** Not identified

**Major Industries:** Gaming, Tourism, Government

**Major Rail Lines:** None

**Major Roadways:** U.S. Route 2, U.S. Route 45

**Major Towns:** Watersmeet

**Major Water Bodies:** Lake Superior

**Ports:** None identified

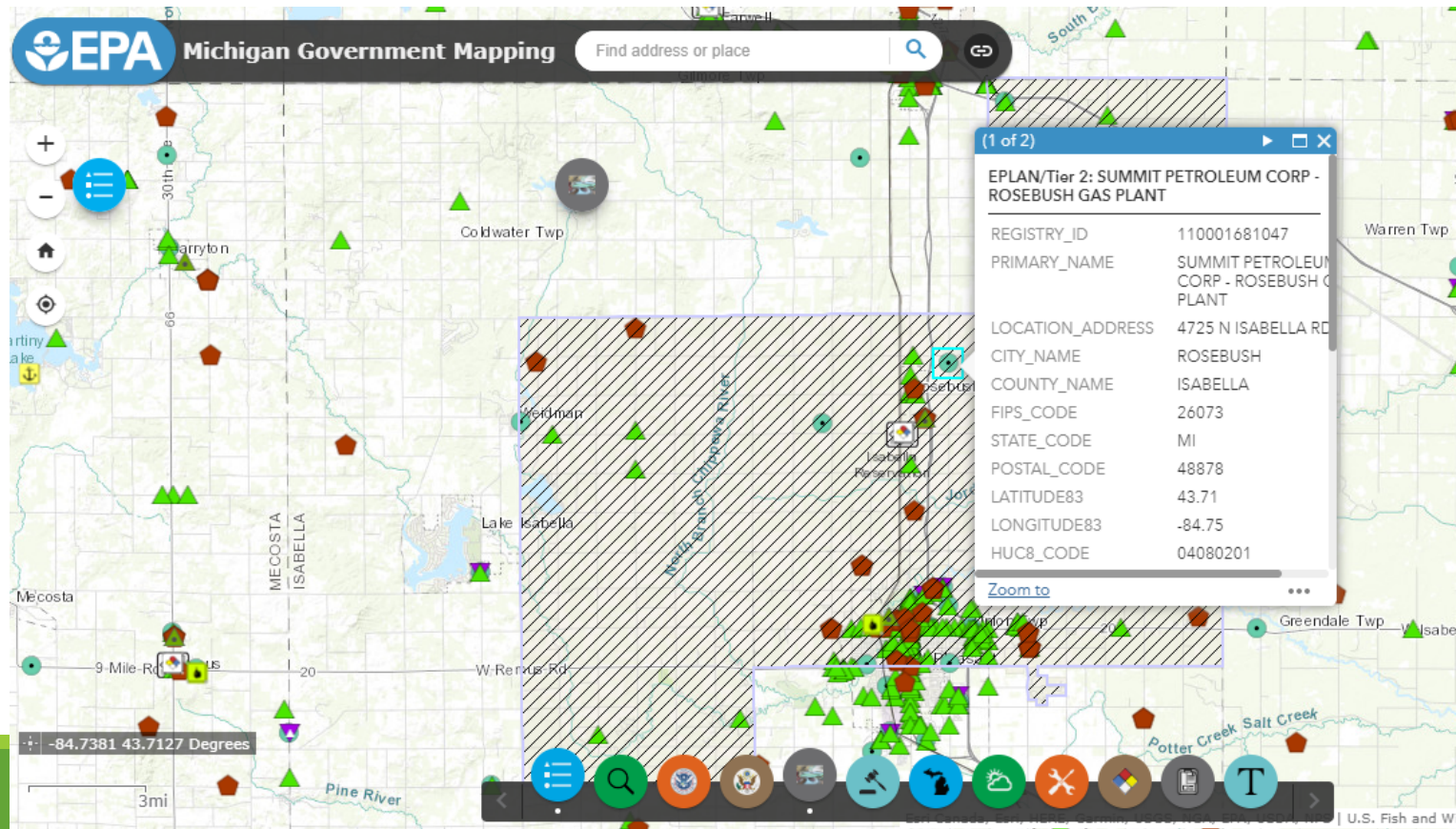
### HOSPITALS WITH TRAUMA CENTERS

Marquette General Hospital 580 W College Ave, Marquette MI 49855 (906) 228-9440 Level 2

St. Mary's Medical Center 420 E 1<sup>st</sup> St. Duluth, MN 55804 (218) 786-3625 Level 2

# Ongoing Projects - Mapping

- Jon Gulch & Tricia Edwards presented at TEPM and workshops
- To host mapping workshops with Tribes to share and QA/QC data



# Ongoing Support

---

## ➤ Technical Assistance with non-hazardous spills

- R5 OSCs on call. Can answer questions and advise as needed.
- Recent example: Fond du Lac coal train derailment
  - David Morrison to present

# Ongoing Support

---

➤ Division Director noted that during Region 5 Tribal Operations Committee Meeting, Tribes requested assistance with planning including but not limited to:

- Emergency Operations Plan
- Hazard Mitigation Plan
- Disaster Debris Management Plan
- Get integrated into area planning



# Ongoing Projects - Training

---

- Oil & Hazardous Material Spill Response Workshop
- Tabletop Exercises
- Hands on Exercise
  - Hannahville Indian Community, Keweenaw Bay Indian Community, Grand Traverse Band of Ottawa & Chippewa, Lac Vieux Desert Band of Chippewa, Inter-Tribal Council of Michigan
- National and local webinars









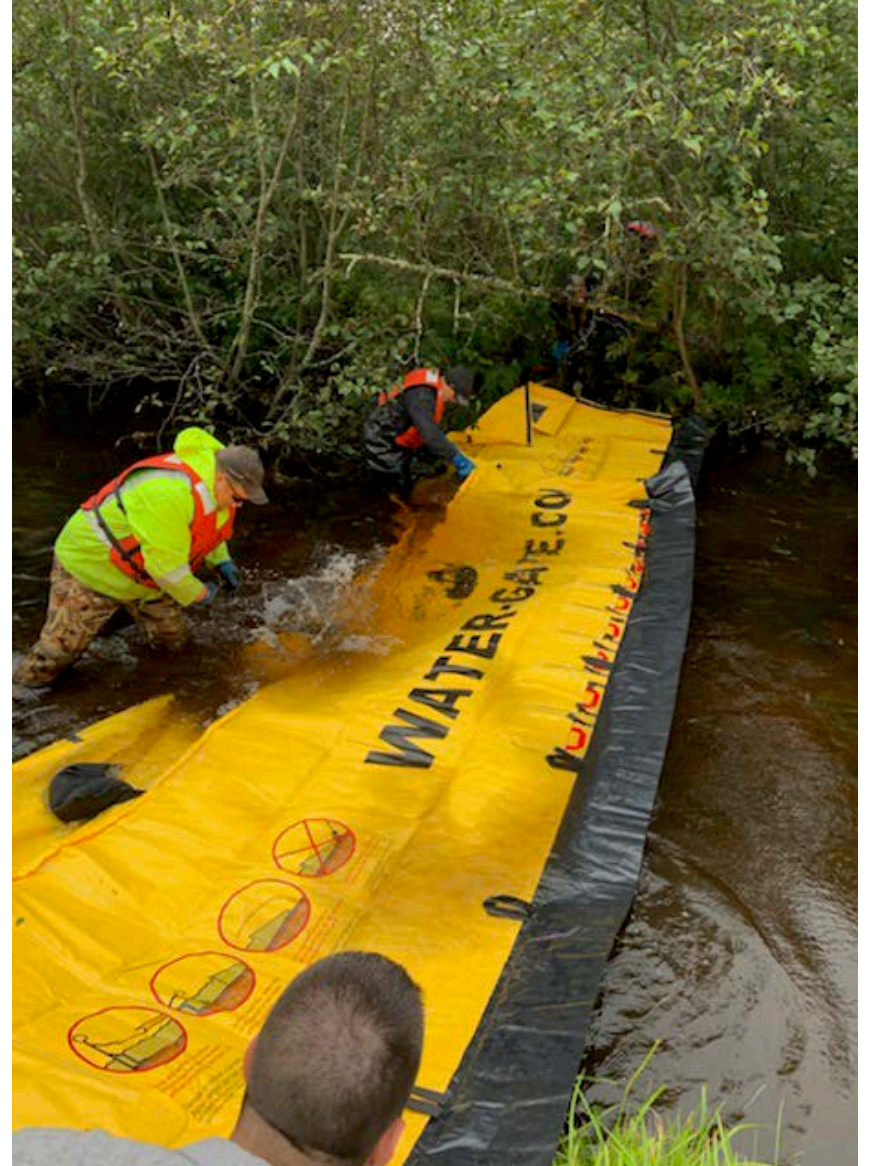














## DISCUSSION

### TRAINING NEEDS

Tribes have expressed a need for training, including 40 Hour HAZWOPER or 8 hour HAZWOPER refreshers, and other but have a number of concerns about travel and costs. One Tribe successfully hosted a joint-40 hour HAZWOPER training with a local university, but other tribes have expressed that this format was still not feasible.

Any creative or collaborative solutions?



Thank You