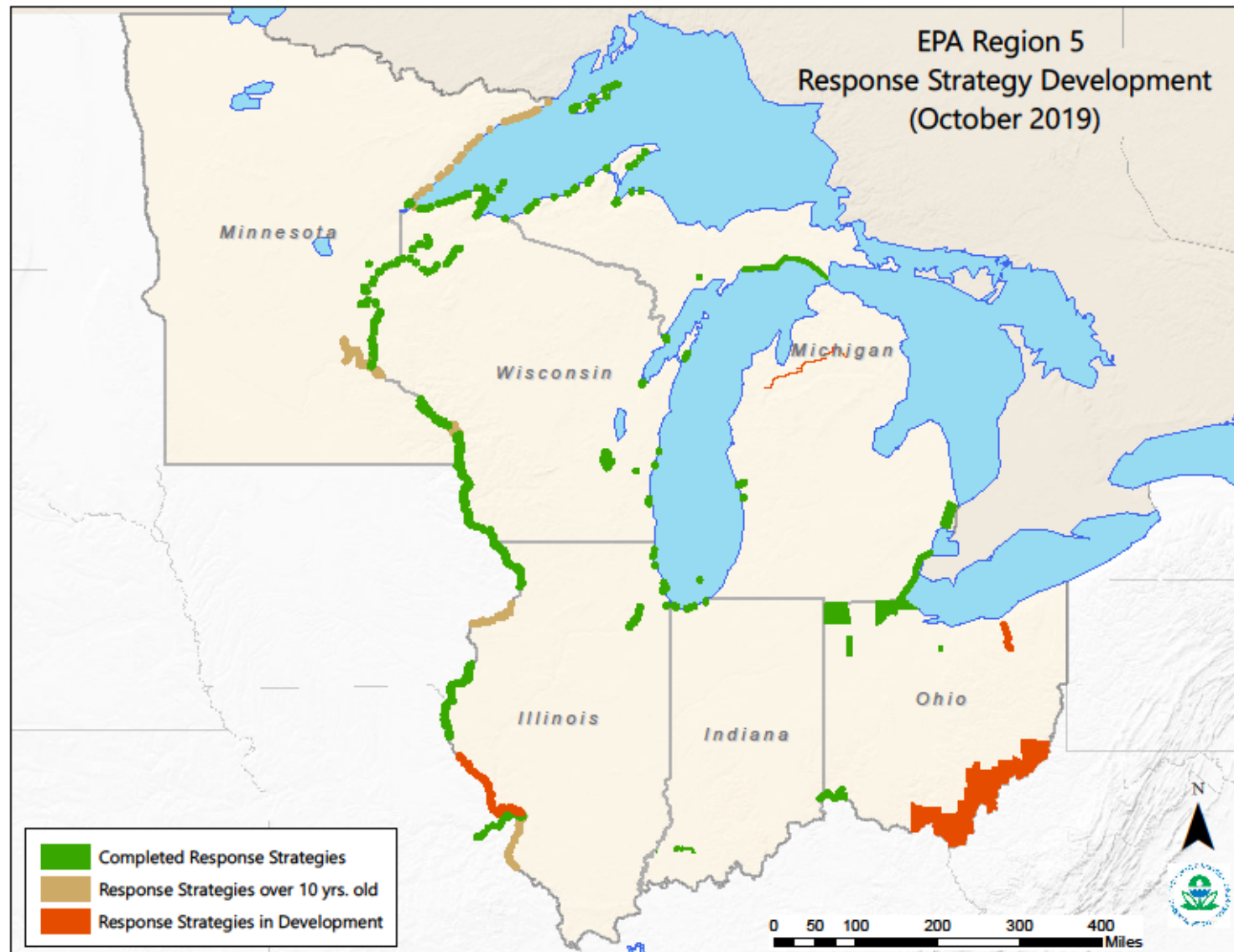


# UMRBA PLANNING UPDATES

## Fall 2019 RRT 5 Meeting





Upper Mississippi  
River Basin  
Association

# **Pool 7 Response Planning Map 10**

0 0.125 0.25 Miles  
July 2009  
Scale 1:20,000



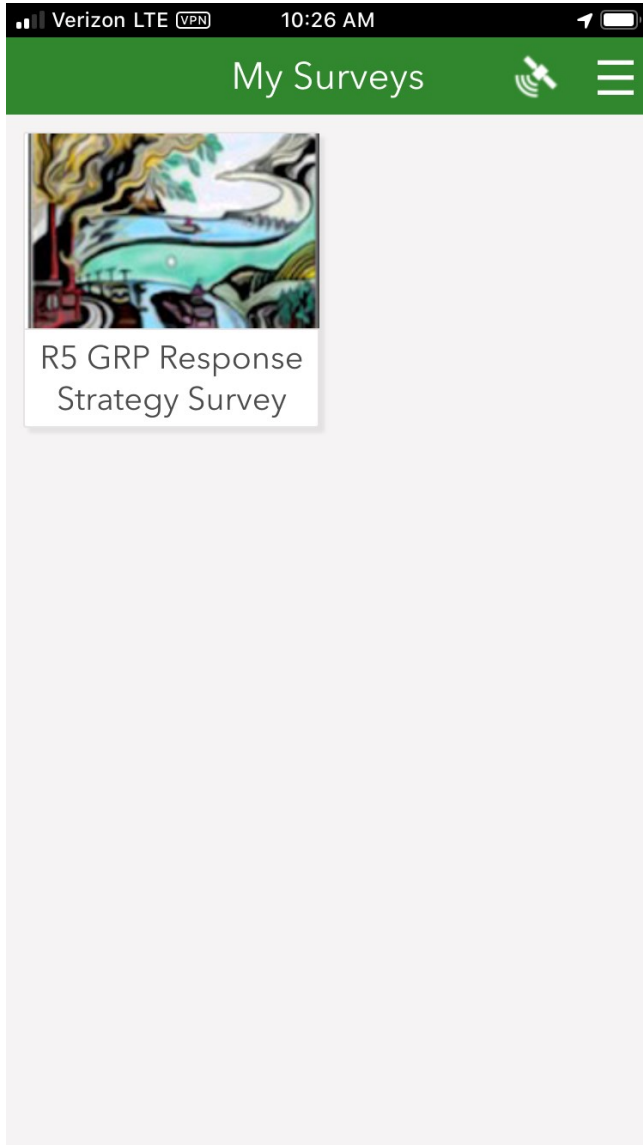
# Survey123 for ArcGIS

---

Survey123 for ArcGIS is a simple and intuitive form-centric data gathering solution. Create, share and analyze surveys in just three easy steps.

[Learn more about Survey123](#)





Verizon LTE VPN 10:25 AM

R5 GRP Response Strategy Survey

Select Survey Type \*

Response Data Sheet

Physical Location Information

Location Name:

City/Township/Village:

State:

County:

Property Type:

Fire District:

✓

# ***GEOGRAPHIC RESPONSE PLAN***

## ***UPPER MISSISSIPPI RIVER - POOL 7***

**Pool Overview**

Pool geographic and resource description and overview of response considerations

**Maps**

Spill Response Strategies, Maps, Tables and Data

Open Maps section

**Plans**

Initial Incident Action Plan and Related Planning Documents

**Emergency Contacts**

Key Emergency Phone Numbers



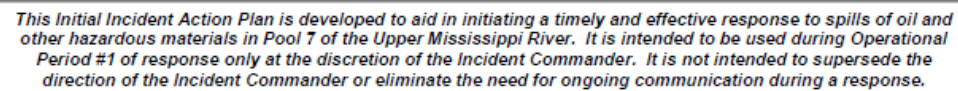
**MAIN**



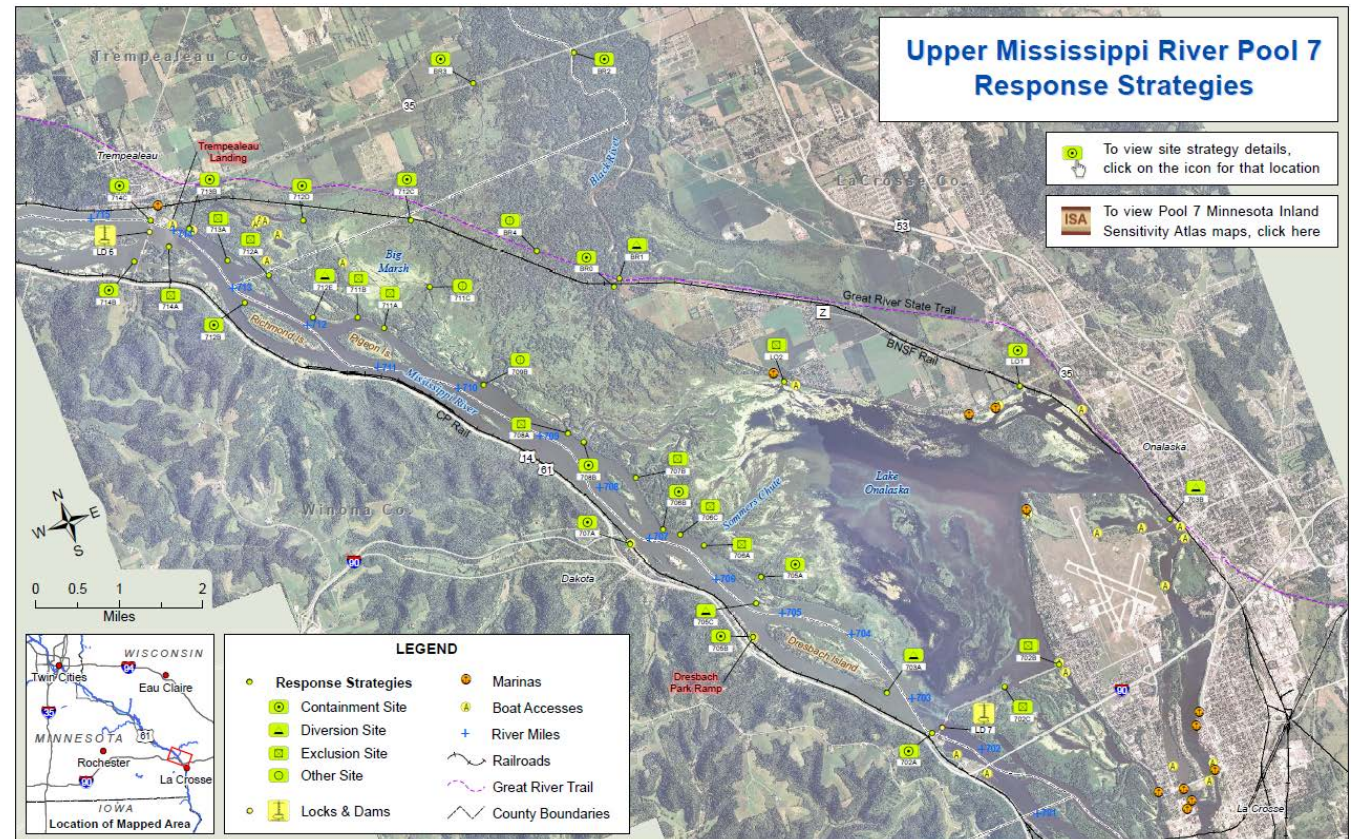
**Help**

**Exit**

### INITIAL INCIDENT ACTION PLAN (IAP)



| IAP Approved by Incident Commander(s): |      |   | DATE/TIME |
|--|------|---|-----------|
| ORG                                    | NAME |   |           |
|  |      | First Local IC (911, Fire Dept., County Emergency Mgr.)         |           |
|  |      | First Responding State (MPCA or WI DNR)                         |           |
|  |      | FOSC; USCG (Vessel or facility), EPA (facility, train or other) |           |
|  |      | USFWS Lead Representative                                       |           |
|  |      | MIN DNR /WI DNR Lead Representative                             |           |



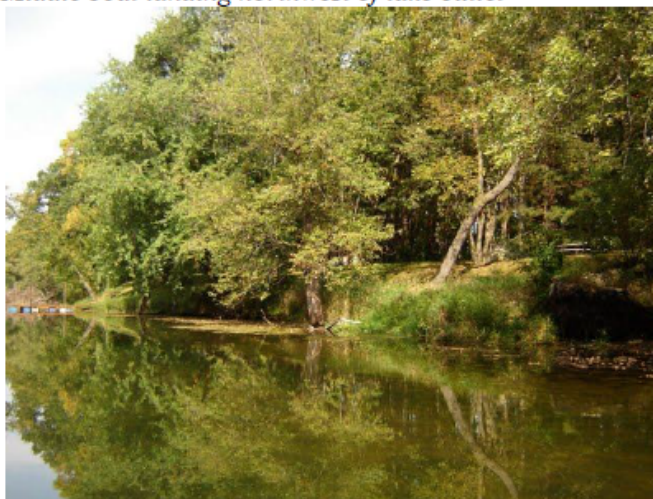


**GOAL: Contain and collect product in the event of a spill between Trempealeau and Tank Creek.**

| Site Number  | Waterbody, River Mile | Site Name  |             |
|--|-----------------------|--|-------------|
| 712d   | Trempealeau Lakes     | Outlet to Round Lake                                     |             |
| Strategy Type*   | Boom Length (ft)      | Land Access  | Boat Access |
| C&C  | 100                   | N  | N           |
| Strategy Implementation ( <a href="#">Go to Aerial View</a> )  |                       |  |             |
| <p>Into 2nd and 3rd lake, jurisdiction changes to state. May be easier to collect, but is more wooded and wider (200 ft). Very slow current, 100 ft width at private land.</p>   |                       |  |             |
| Site Access  |                       |  |             |
| <p>Lake outlet flowing into Round and Mud Lakes. Land access through mown lawn on private property. Boat access at middle landing on lake. Road around lake blocked by locked WI DNR gate. Access from south may require airboat due to shallow areas.</p> |                       |  |             |
| <b>UTM z15 Y:</b> 4872013<br><b>Latitude:</b> 43.990107  |                       | <b>UTM z15 X:</b> 628030<br><b>Longitude:</b> -91.403377 |             |



*Middle boat landing northwest of lake outlet*



*Private property access for collection*

# UMR Spill Response and Resource Plan Pool GRPs & IAPs

Available at [RRT5.org](http://RRT5.org)

Andy Maguire - R5 OSC

Barbi Lee - R5 Planner

