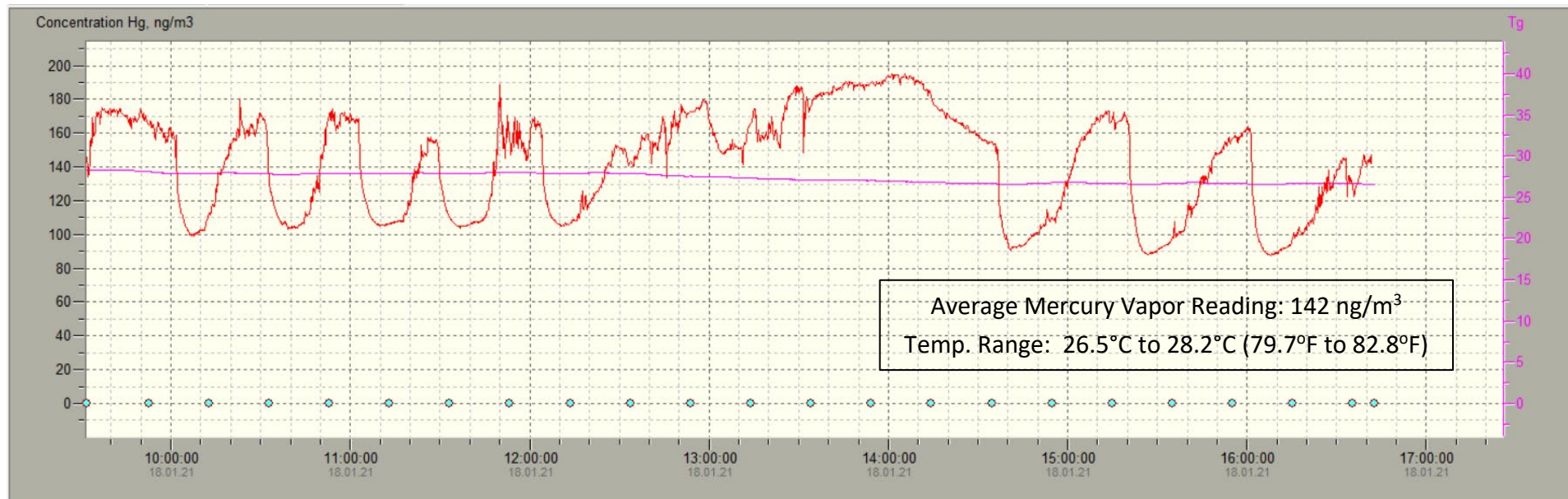


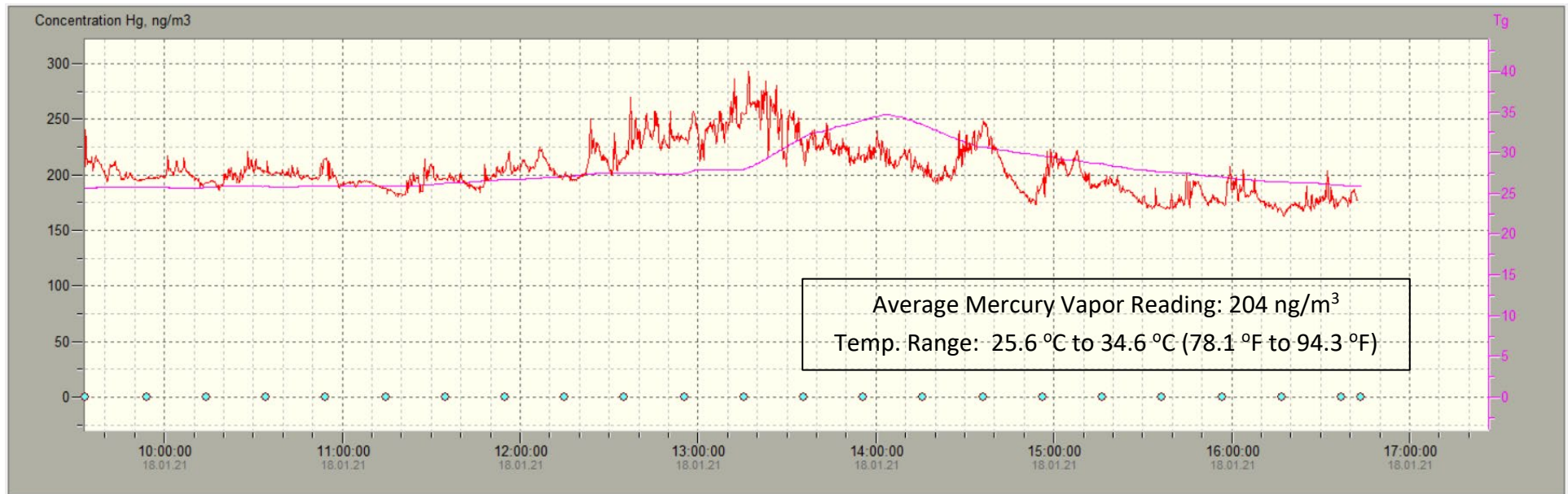
LUMEX RA 915M CLEARANCE READINGS ON JANUARY 18, 2021  
IN BATHROOM OF THE OCCUPIED RESIDENCE

- 1) Line plot shows mercury vapor readings, at a young child's breathing zone, were less than 200 ng/m<sup>3</sup> for the entire clearance period. Pink line indicates temperature, in °C. The cyclical change in mercury vapor concentrations were due to the running HVAC system heating the house.



LUMEX RA 915M CLEARANCE READINGS ON JANUARY 18, 2021  
IN LIVING ROOM OF THE OCCUPIED RESIDENCE

- 1) Line plot shows mercury vapor readings, at a young child's breathing zone, were less than 300 ng/m<sup>3</sup> for the entire clearance period.



LUMEX RA 915M CLEARANCE READINGS ON JANUARY 19, 2021  
IN THE GARAGE (LOCATION OF THE SPILL)

- 1) Line plot shows mercury vapor readings, at a young child's breathing zone, were less than 700 ng/m<sup>3</sup> for the entire clearance period. A drop in temperature was due to the time the portable heater was running low on fuel and refueled.

