

**TO-15 SIM Commercial Sample Results**

24-Hour Sample Time

Waymire VI Site

7702 Maie Avenue, Los Angeles, California

Analyte	Sample ID	OB-IA	OB-WH	OB-OA	OA-CS	OA-IA
	RSL <sup>1</sup>	6/5/2019	6/5/2019	6/5/2019	6/6/2019	6/6/2019
Tetrachloroethene	47	<b>0.33</b>	<b>0.45</b>	<b>0.22</b>	<b>20.35</b>	<b>3.93</b>
Trichloroethene	3	<b>1.5</b>	<b>1.93</b>	<b>0.7</b>	<b>47.83</b>	<b>11.29</b>
Vinyl Chloride	2.8	ND (<0.13)	ND (<0.13)	ND (<0.13)	ND (<0.13)	ND (<0.13)

## Notes:

1 = US EPA Regional Screening Levels - Industrial Air

All results are presented in micrograms per cubic meter (ug/m<sup>3</sup>)

ND = not detected above the reporting limit

Bold = detected above the reporting limit

Bold and Highlighted = detected above the RSL

7XXX = Address on Maie Avenue

CS = crawlspace sample

IA = indoor air sample

OA = outdoor air sample

OA = office "A"

OB = office "B"

OC = office "C"

WH = warehouse

MW = commercial metal works

BS = commercial basement

UP = commercial upholstery

SR = sewing room

**TO-15 SIM Commercial Sample Results**  
 24-Hour Sample Time  
 Waymire VI Site  
 7702 Maie Avenue, Los Angeles, California

Analyte	OA-OA	-OA	MW-IA	BS-IA	UP-IA	SR-IA	OC-IA
	6/26/2019	6/6/2019	6/26/2019	6/26/2019	6/26/2019	6/26/2019	6/26/2019
Tetrachloroethene	<b>0.242</b>	ND (<0.13)	<b>0.65</b>	<b>0.814</b>	<b>25.1</b>	<b>2.58</b>	<b>2.52</b>
Trichloroethene	<b>0.38</b>	ND (<0.13)	ND (<0.13)	ND (<0.13)	<b>23.11</b>	<b>0.39</b>	<b>5.77</b>
Vinyl Chloride	ND (<0.13)	ND (<0.13)	ND (<0.13)	ND (<0.13)	ND (<0.13)	ND (<0.13)	ND (<0.018)

Notes:

1 = US EPA Regional Screening Levels - Industrial Air

All results are presented in micrograms per cubic meter

ND = not detected above the reporting limit

Bold = detected above the reporting limit

Bold and Highlighted = detected above the RSL

7XXX = Address on Maie Avenue

CS = crawlspace sample

IA = indoor air sample

OA = outdoor air sample

OA = office "A"

OB = office "B"

OC = office "C"

WH = warehouse

MW = commercial metal works

BS = commercial basement

UP = commercial upholstery

SR = sewing room

**TO-15 SIM Residential Sample Results**  
24-Hour Sample Time  
Waymire VI Site  
7702 Maie Avenue, Los Angeles, California

Analyte	Sample ID	-CS	-IA	-IA-D	-CS	-IA	-IA-D
	RSL <sup>1</sup>	6/11/2019	6/11/2019	6/11/2019	6/5/2019	6/5/2019	6/5/2019
Tetrachloroethene	11	<b>0.31</b>	<b>0.25</b>	<b>0.22</b>	<b>0.6</b>	ND (<0.169)	ND (<0.169)
Trichloroethene	0.48	ND (<0.134)	ND (<0.134)	ND (<0.134)	<b>1.13</b>	ND (<0.134)	ND (<0.134)
Vinyl Chloride	0.17	ND (<0.13)	ND (<0.13)	ND (<0.13)	ND (<0.13)	ND (<0.13)	ND (<0.13)

Notes:

1 = US EPA Regional Screening Levels - Resident Air

All results are presented in micrograms per cubic meter (ug/m<sup>3</sup>)

ND = not detected above the reporting limit

Bold = detected above the reporting limit

Bold and Highlighted = detected above the RSL

7XXX = Address on Maie Avenue

CS = crawlspace sample

IA = indoor air sample

BK = background sample

D = duplicate sample

OA = outdoor air sample

BS = basement sample

**TO-15 SIM Residential Sample Results**  
 24-Hour Sample Time  
 Waymire VI Site  
 7702 Maie Avenue, Los Angeles, California

Analyte	OA	-IA	-BK	-IA	-CS	-IA	-OA
	6/5/2019	6/21/2019	6/6/2019	6/21/2019	6/21/2019	6/21/2019	6/21/2019
Tetrachloroethene	<b>0.18</b>	<b>0.434</b>	<b>0.21</b>	<b>0.305</b>	<b>1.17</b>	<b>0.176</b>	<b>0.108</b>
Trichloroethene	ND (<0.134)	<b>0.33</b>	0.41	<b>0.59</b>	<b>1.43</b>	<b>0.25</b>	<b>0.12</b>
Vinyl Chloride	ND (<0.13)	ND (<0.02)	ND (<0.13)	ND (<0.02)	ND (<0.02)	ND (<0.02)	ND (<0.02)

Notes:

1 = US EPA Regional Screening Levels - Resident Air

All results are presented in micrograms per cubic me

ND = not detected above the reporting limit

Bold = detected above the reporting limit

Bold and Highlighted = detected above the RSL

7XXX = Address on Maie Avenue

CS = crawlspace sample

IA = indoor air sample

BK = background sample

D = duplicate sample

OA = outdoor air sample

BS = basement sample

**TO-15 SIM Residential Sample Results**  
24-Hour Sample Time  
Waymire VI Site  
7702 Maie Avenue, Los Angeles, California

Analyte	CS	-IA	-CS	-IA	-CS	-IA	-OA
	6/11/2019	6/11/2019	6/11/2019	6/11/2019	6/26/2019	6/26/2019	6/26/2019
Tetrachloroethene	<b>1.83</b>	<b>0.88</b>	<b>2.1</b>	<b>0.24</b>	<b>0.14</b>	<b>0.12</b>	ND (<0.12)
Trichloroethene	<b>5.37</b>	<b>0.75</b>	<b>2.58</b>	ND (<0.134)	ND (<0.091)	ND (<0.091)	ND (<0.091)
Vinyl Chloride	ND (<0.13)	ND (<0.13)	ND (<0.13)	ND (<0.13)	ND (<0.020)	ND (<0.020)	ND (<0.020)

Notes:

1 = US EPA Regional Screening Levels - Resident Air

All results are presented in micrograms per cubic me

ND = not detected above the reporting limit

Bold = detected above the reporting limit

Bold and Highlighted = detected above the RSL

7XXX = Address on Maie Avenue

CS = crawlspace sample

IA = indoor air sample

BK = background sample

D = duplicate sample

OA = outdoor air sample

BS = basement sample

**TO-15 SIM Residential Sample Results**  
 24-Hour Sample Time  
 Waymire VI Site  
 7702 Maie Avenue, Los Angeles, California

Analyte	-BS-IA	-IA	-CS	-IA
	6/26/2019	6/26/2019	6/26/2019	6/26/2019
Tetrachloroethene	<b>0.28</b>	<b>0.12</b>	<b>0.21</b>	ND (<0.12)
Trichloroethene	<b>0.28</b>	ND (<0.086)	ND (<0.113)	ND (<0.097)
Vinyl Chloride	ND (<0.020)	ND (<0.020)	ND (<0.020)	ND (<0.023)

Notes:

1 = US EPA Regional Screening Levels - Resident Air

All results are presented in micrograms per cubic me

ND = not detected above the reporting limit

Bold = detected above the reporting limit

Bold and Highlighted = detected above the RSL

7XXX = Address on Maie Avenue

CS = crawlspace sample

IA = indoor air sample

BK = background sample

D = duplicate sample

OA = outdoor air sample

BS = basement sample

**TO-15 SIM Commercial Sample Results**  
**Upholstery Store Sampling**  
**Waymire VI Site**  
**Los Angeles, California**

Analyte	Sample ID	UP-IA (24-Hour)	UP2-IA (7.5-Hour)
	EPA RSL <sup>1</sup> (Industrial Air)	6/26/2019	07/23/2019
Tetrachloroethene	47	<b>25.1</b>	<b>2.56</b>
Trichloroethene	3	<b>23.11</b>	<b>4.82</b>
Vinyl Chloride	2.8	ND (<0.13)	ND (<0.065)

Notes:

<sup>1</sup> = US EPA Regional Screening Levels - Industrial Air

All results are presented in micrograms per cubic meter (µg/m<sup>3</sup>)

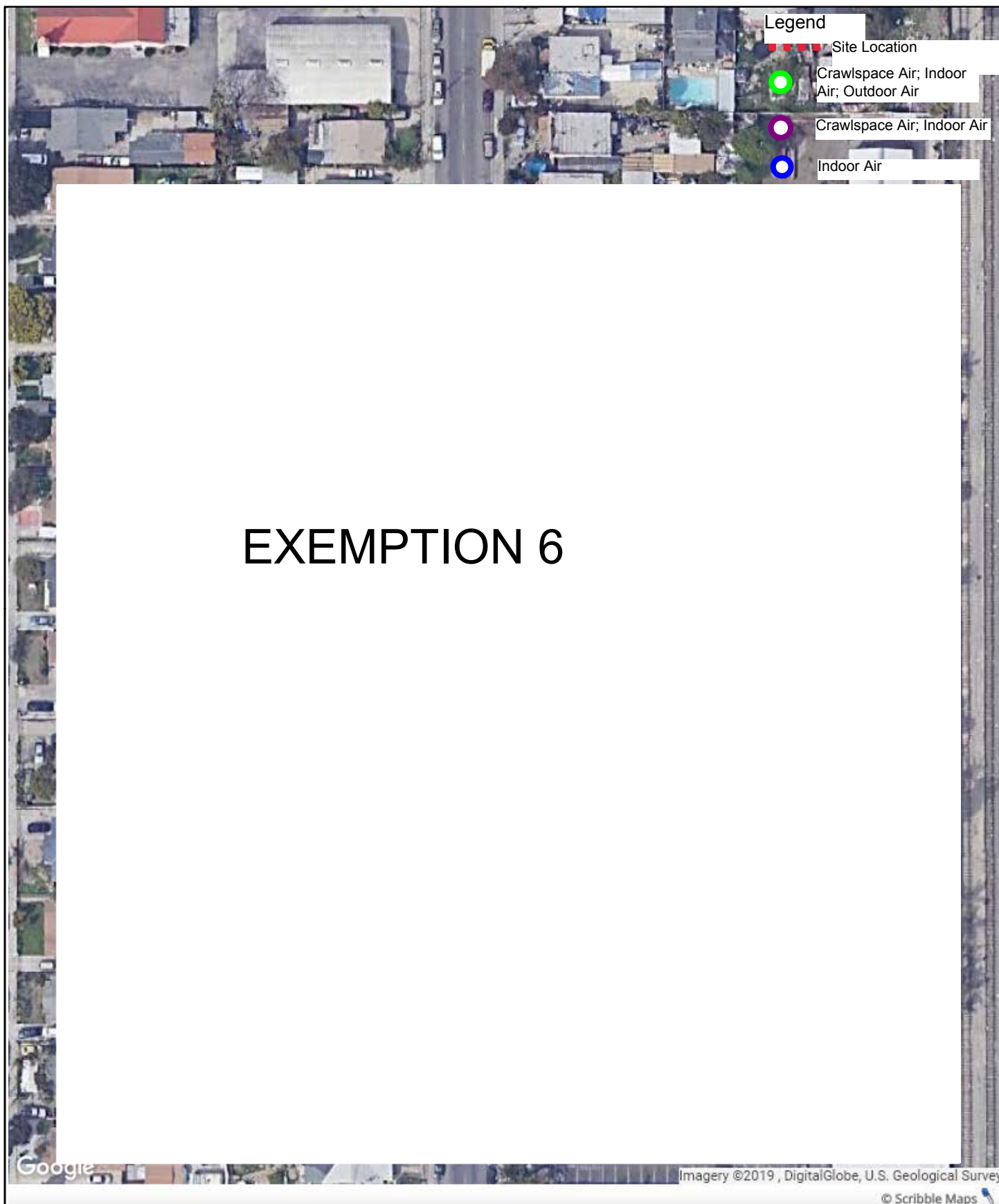
ND = not detected above the reporting limit (<RL)

Bold = detected above the reporting limit

**Bold and Highlighted - detected above the RSL**

UP = Commercial Upholstery

IA = Indoor Air



Feet 1000

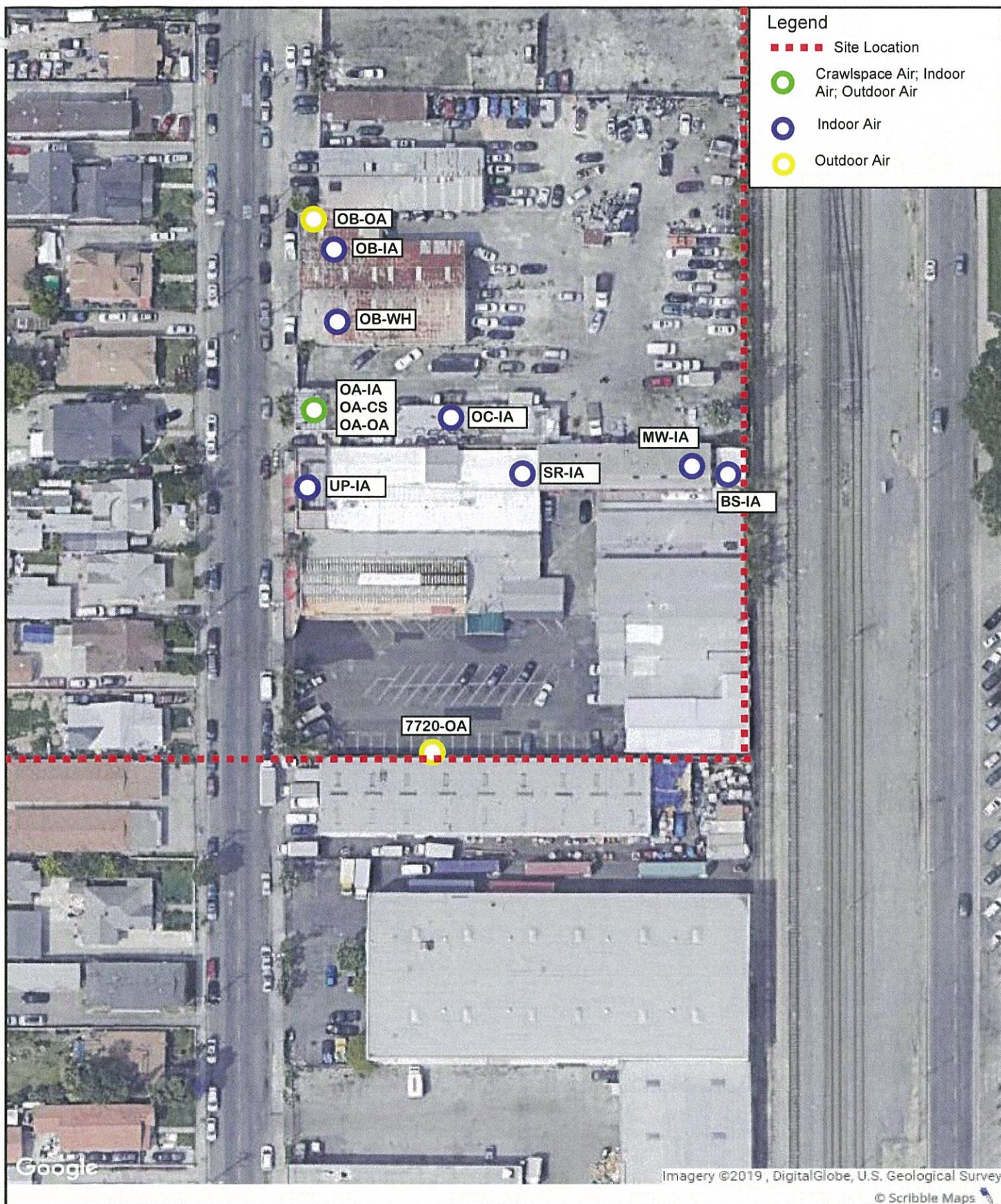
**PREPARED BY:**  
Region 9, START  
Weston Solutions, Inc.  
2300 Clayton Rd, Ste 900  
Concord, CA 94520



**PREPARED FOR:**  
EPA Region 9  
Emergency  
Response  
Section



**FIGURE 3**  
**RESIDENTIAL SAMPLE LOCATIONS**  
Waymire Drum Response  
7702 Maie Avenue Los Angeles, Los Angeles  
County, California





 <p><b>WESTON SOLUTIONS</b></p> <p>0 Feet 1000</p>	<p><b>PREPARED BY:</b>          Region 9, START          Weston Solutions, Inc.          2300 Clayton Rd, Ste 900          Concord, CA 94520</p>	<p><b>PREPARED FOR:</b>          EPA Region 9          Emergency Response Section</p> 	<p><b>FIGURE 5</b>  <b>TO-15 SIM COMMERCIAL SAMPLES</b>          Waymire Drum Response          7702 Maie Avenue Los Angeles, Los Angeles          County, California</p>
---	--	---	---