

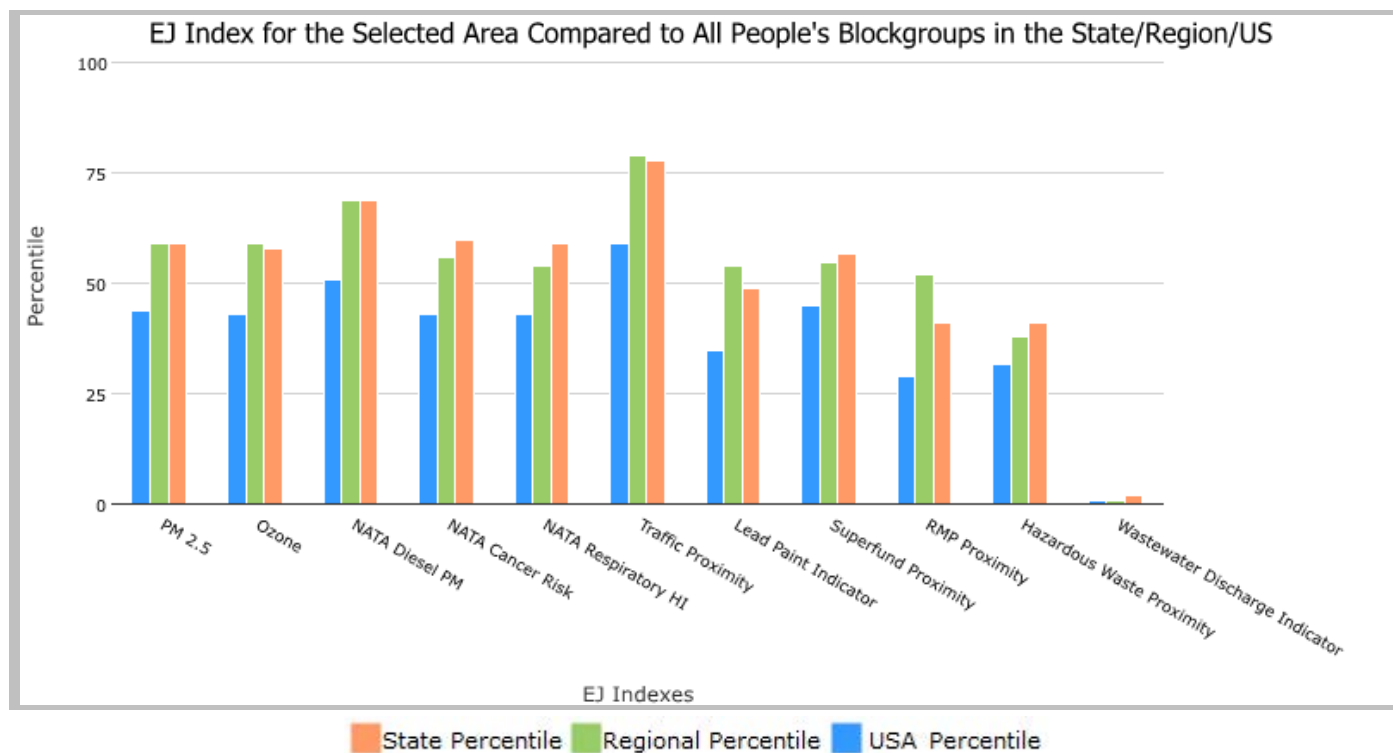
EJSCREEN Report (Version 2020)

the User Specified Area, MISSOURI, EPA Region 7

Approximate Population: 756

Input Area (sq. miles): 11.40

Selected Variables	State Percentile	EPA Region Percentile	USA Percentile
EJ Indexes			
EJ Index for PM2.5	59	59	44
EJ Index for Ozone	58	59	43
EJ Index for NATA* Diesel PM	69	69	51
EJ Index for NATA* Air Toxics Cancer Risk	60	56	43
EJ Index for NATA* Respiratory Hazard Index	59	54	43
EJ Index for Traffic Proximity and Volume	78	79	59
EJ Index for Lead Paint Indicator	49	54	35
EJ Index for Superfund Proximity	57	55	45
EJ Index for RMP Proximity	41	52	29
EJ Index for Hazardous Waste Proximity	41	38	32
EJ Index for Wastewater Discharge Indicator	2	1	1

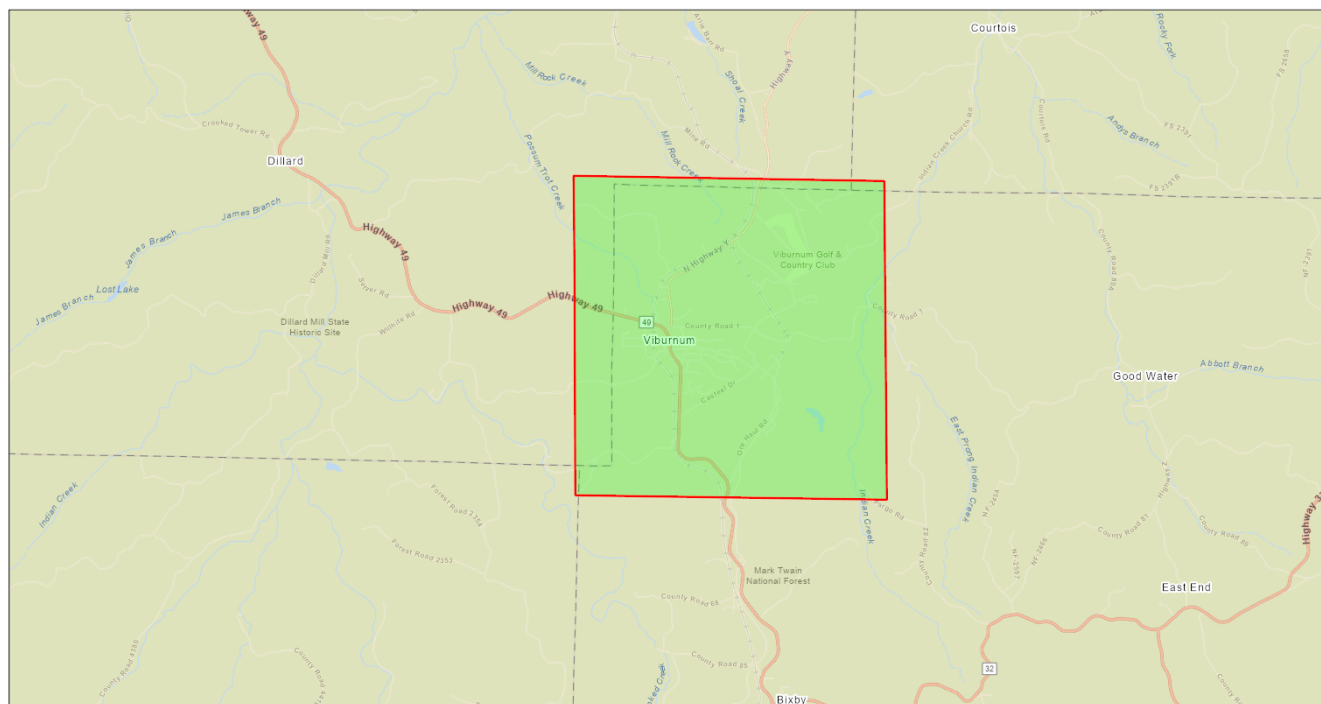


This report shows the values for environmental and demographic indicators and EJSCREEN indexes. It shows environmental and demographic raw data (e.g., the estimated concentration of ozone in the air), and also shows what percentile each raw data value represents. These percentiles provide perspective on how the selected block group or buffer area compares to the entire state, EPA region, or nation. For example, if a given location is at the 95th percentile nationwide, this means that only 5 percent of the US population has a higher block group value than the average person in the location being analyzed. The years for which the data are available, and the methods used, vary across these indicators. Important caveats and uncertainties apply to this screening-level information, so it is essential to understand the limitations on appropriate interpretations and applications of these indicators. Please see EJSCREEN documentation for discussion of these issues before using reports.

the User Specified Area, MISSOURI, EPA Region 7

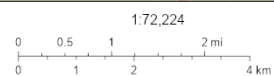
Approximate Population: 756

Input Area (sq. miles): 11.40



March 16, 2021

Project 1



Sources: Esri, HERE, Garmin, FAO, NOAA, USGS, OpenStreetMap contributors, and the GIS User Community

Sites reporting to EPA

Superfund NPL

0

Hazardous Waste Treatment, Storage, and Disposal Facilities (TSDF)

1

EJSCREEN Report (Version 2020)

the User Specified Area, MISSOURI, EPA Region 7

Approximate Population: 756

Input Area (sq. miles): 11.40

Selected Variables	Value	State Avg.	%ile in State	EPA Region Avg.	%ile in EPA Region	USA Avg.	%ile in USA
Environmental Indicators							
Particulate Matter (PM 2.5 in $\mu\text{g}/\text{m}^3$)	7.95	8.56	16	8.17	37	8.55	30
Ozone (ppb)	44	45.6	24	44.4	50	42.9	61
NATA* Diesel PM ($\mu\text{g}/\text{m}^3$)	0.12	0.447	1	0.367	<50th	0.478	<50th
NATA* Cancer Risk (lifetime risk per million)	27	32	16	27	50-60th	32	<50th
NATA* Respiratory Hazard Index	0.37	0.42	17	0.36	<50th	0.44	<50th
Traffic Proximity and Volume (daily traffic count/distance to road)	0	370	7	330	6	750	4
Lead Paint Indicator (% Pre-1960 Housing)	0.15	0.29	45	0.34	38	0.28	47
Superfund Proximity (site count/km distance)	0.031	0.099	28	0.098	39	0.13	28
RMP Proximity (facility count/km distance)	0.44	0.64	61	0.95	47	0.74	57
Hazardous Waste Proximity (facility count/km distance)	0.75	1.6	49	1.3	53	5	44
Wastewater Discharge Indicator (toxicity-weighted concentration/m distance)	9.5	7.7	96	3.8	98	9.4	97
Demographic Indicators							
Demographic Index	24%	27%	55	25%	58	36%	39
People of Color Population	5%	20%	25	20%	24	39%	11
Low Income Population	43%	33%	69	31%	74	33%	71
Linguistically Isolated Population	0%	1%	72	2%	66	4%	45
Population With Less Than High School Education	20%	10%	86	9%	88	13%	79
Population Under 5 years of age	7%	6%	67	6%	64	6%	65
Population over 64 years of age	17%	16%	60	16%	60	15%	65

* The National-Scale Air Toxics Assessment (NATA) is EPA's ongoing, comprehensive evaluation of air toxics in the United States. EPA developed the NATA to prioritize air toxics, emission sources, and locations of interest for further study. It is important to remember that NATA provides broad estimates of health risks over geographic areas of the country, not definitive risks to specific individuals or locations. More information on the NATA analysis can be found at: <https://www.epa.gov/national-air-toxics-assessment>.

For additional information, see: www.epa.gov/environmentaljustice

EJSCREEN is a screening tool for pre-decisional use only. It can help identify areas that may warrant additional consideration, analysis, or outreach. It does not provide a basis for decision-making, but it may help identify potential areas of EJ concern. Users should keep in mind that screening tools are subject to substantial uncertainty in their demographic and environmental data, particularly when looking at small geographic areas. Important caveats and uncertainties apply to this screening-level information, so it is essential to understand the limitations on appropriate interpretations and applications of these indicators. Please see EJSCREEN documentation for discussion of these issues before using reports. This screening tool does not provide data on every environmental impact and demographic factor that may be relevant to a particular location. EJSCREEN outputs should be supplemented with additional information and local knowledge before taking any action to address potential EJ concerns.