

## Air Monitoring Summary Tables

The tables below summarize preliminary air monitoring data collected using Handheld DustTrak, SPM Flex, and MultiRAE Pro instruments.

**Project Name:** Morris Industrial Fire ER  
**Date/Time:** 07/27/21 07:21 to 07/27/21 19:01

### Weather

**Temperature:** 85°F, low of 62°F  
**Wind Speed:** 0 to 12 miles per hour  
**Wind Direction:** Southwest  
**Conditions:** Sunny

Fixed Discrete Air Monitoring Location 010 - Downwind					
Instrument	Analyte	Morris Industrial Fire Public Health Screening Level <sup>1</sup>	Public Health Screening Level Exceeded?	Number of Measurements	Concentration Range
MultiRAE Pro	H <sub>2</sub> S (ppm)	0.1 ppm	No	3	0.000 to 0.000
	CO (ppm)	--	No	3	0.00 to 0.00
	O <sub>2</sub> (%)	--	No	3	20.9 to 20.9
	LEL (%)	--	No	3	0.000 to 0.000
	VOC (ppm)	1 ppm	No	3	0.000 to 0.000
SPM Flex	HF	1 ppm	No	6	0.000 to 0.000
Handheld DustTrak	PM <sub>2.5</sub> (mg/m <sup>3</sup> )	0.025 mg/m <sup>3</sup>	Yes	3	0.019 to 0.038
	PM <sub>10</sub> (mg/m <sup>3</sup> )	0.05 mg/m <sup>3</sup>	No	3	0.019 to 0.037

Fixed Discrete Air Monitoring Location 011 - Downwind					
Instrument	Analyte	Morris Industrial Fire Public Health Screening Level <sup>1</sup>	Public Health Screening Level Exceeded?	Number of Measurements	Concentration Range
MultiRAE Pro	H <sub>2</sub> S (ppm)	0.1 ppm	No	3	0.000 to 0.000
	CO (ppm)	--	No	3	0.00 to 0.00
	O <sub>2</sub> (%)	--	No	3	20.9 to 20.9
	LEL (%)	--	No	3	0.000 to 0.000
	VOC (ppm)	1 ppm	No	3	0.000 to 0.000
SPM Flex	HF	1 ppm	No	6	0.000 to 0.000
Handheld DustTrak	PM <sub>2.5</sub> (mg/m <sup>3</sup> )	0.025 mg/m <sup>3</sup>	Yes	3	0.018 to 0.033
	PM <sub>10</sub> (mg/m <sup>3</sup> )	0.05 mg/m <sup>3</sup>	No	3	0.020 to 0.037

Fixed Discrete Air Monitoring Location 012 - Downwind					
Instrument	Analyte	Morris Industrial Fire Public Health Screening Level <sup>1</sup>	Public Health Screening Level Exceeded?	Number of Measurements	Concentration Range
MultiRAE Pro	H <sub>2</sub> S (ppm)	0.1 ppm	No	3	0.000 to 0.000
	CO (ppm)	--	No	3	0.00 to 0.00
	O <sub>2</sub> (%)	--	No	3	20.9 to 20.9
	LEL (%)	--	No	3	0.000 to 0.000
	VOC (ppm)	1 ppm	No	3	0.000 to 0.000
SPM Flex	HF	1 ppm	No	6	0.000 to 0.000
Handheld DustTrak	PM <sub>2.5</sub> (mg/m <sup>3</sup> )	0.025 mg/m <sup>3</sup>	Yes	3	0.017 to 0.034
	PM <sub>10</sub> (mg/m <sup>3</sup> )	0.05 mg/m <sup>3</sup>	No	3	0.018 to 0.037

Notes: See last page.

## Air Monitoring Summary Tables

The tables below summarize preliminary air monitoring data collected using Handheld DustTrak, SPM Flex, and MultiRAE Pro instruments.

**Project Name:** Morris Industrial Fire ER  
**Date/Time:** 07/27/21 07:21 to 07/27/21 19:01  
**Weather**  
**Temperature:** 85°F, low of 62°F  
**Wind Speed:** 0 to 12 miles per hour  
**Wind Direction:** Southwest  
**Conditions:** Sunny

Fixed Discrete Air Monitoring Location 013 - Upwind					
Instrument	Analyte	Morris Industrial Fire Public Health Screening Level <sup>1</sup>	Public Health Screening Level Exceeded?	Number of Measurements	Concentration Range
MultiRAE Pro	H <sub>2</sub> S (ppm)	0.1 ppm	No	3	0.000 to 0.000
	CO (ppm)	--	No	3	0.00 to 0.00
	O <sub>2</sub> (%)	--	No	3	20.9 to 20.9
	LEL (%)	--	No	3	0.000 to 0.000
	VOC (ppm)	1 ppm	No	3	0.000 to 0.000
SPM Flex	HF	1 ppm	No	6	0.000 to 0.000
Handheld DustTrak	PM <sub>2.5</sub> (mg/m <sup>3</sup> )	0.025 mg/m <sup>3</sup>	Yes	3	0.022 to 0.035
	PM <sub>10</sub> (mg/m <sup>3</sup> )	0.05 mg/m <sup>3</sup>	No	3	0.023 to 0.033

Fixed Discrete Air Monitoring Location 014 - Upwind					
Instrument	Analyte	Morris Industrial Fire Public Health Screening Level <sup>1</sup>	Public Health Screening Level Exceeded?	Number of Measurements	Concentration Range
MultiRAE Pro	H <sub>2</sub> S (ppm)	0.1 ppm	No	3	0.000 to 0.000
	CO (ppm)	--	No	3	0.00 to 0.00
	O <sub>2</sub> (%)	--	No	3	20.9 to 20.9
	LEL (%)	--	No	3	0.000 to 0.000
	VOC (ppm)	1 ppm	No	3	0.000 to 0.000
SPM Flex	HF	1 ppm	No	6	0.000 to 0.000
Handheld DustTrak	PM <sub>2.5</sub> (mg/m <sup>3</sup> )	0.025 mg/m <sup>3</sup>	Yes	3	0.021 to 0.034
	PM <sub>10</sub> (mg/m <sup>3</sup> )	0.05 mg/m <sup>3</sup>	No	3	0.025 to 0.037

Fixed Discrete Air Monitoring Location 015 - Upwind					
Instrument	Analyte	Morris Industrial Fire Public Health Screening Level <sup>1</sup>	Public Health Screening Level Exceeded?	Number of Measurements	Concentration Range
MultiRAE Pro	H <sub>2</sub> S (ppm)	0.1 ppm	No	2	0.000 to 0.000
	CO (ppm)	--	No	4	0.00 to 0.00
	O <sub>2</sub> (%)	--	No	3	20.9 to 20.9
	LEL (%)	--	No	3	0.000 to 0.000
	VOC (ppm)	1 ppm	No	3	0.000 to 0.000
SPM Flex	HF	1 ppm	No	6	0.000 to 0.000
Handheld DustTrak	PM <sub>2.5</sub> (mg/m <sup>3</sup> )	0.025 mg/m <sup>3</sup>	Yes	3	0.019 to 0.032
	PM <sub>10</sub> (mg/m <sup>3</sup> )	0.05 mg/m <sup>3</sup>	No	3	0.024 to 0.037

Notes: See last page.

# Air Monitoring Summary Tables

The tables below summarize preliminary air monitoring data collected using Handheld DustTrak, SPM Flex, and MultiRAE Pro instruments.

**Project Name:** Morris Industrial Fire ER  
**Date/Time:** 07/27/21 07:21 to 07/27/21 19:01  
**Weather**  
**Temperature:** 85°F, low of 62°F  
**Wind Speed:** 0 to 12 miles per hour  
**Wind Direction:** Southwest  
**Conditions:** Sunny

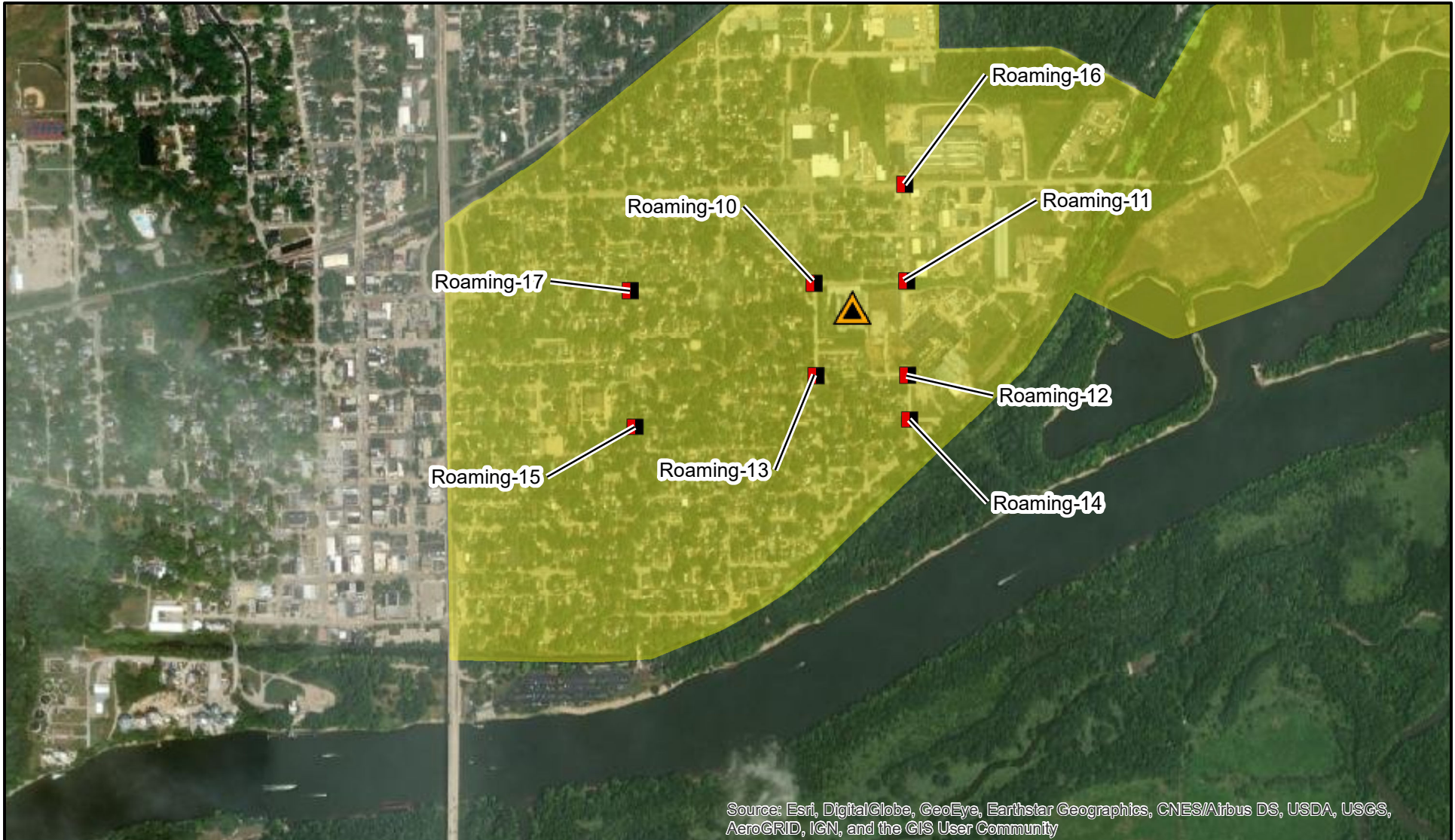
Fixed Discrete Air Monitoring Location 016 - Downwind					
Instrument	Analyte	Morris Industrial Fire Public Health Screening Level <sup>1</sup>	Public Health Screening Level Exceeded?	Number of Measurements	Concentration Range
MultiRAE Pro	H <sub>2</sub> S (ppm)	0.1 ppm	No	3	0.000 to 0.000
	CO (ppm)	--	No	3	0.00 to 0.00
	O <sub>2</sub> (%)	--	No	3	20.9 to 20.9
	LEL (%)	--	No	3	0.000 to 0.000
	VOC (ppm)	1 ppm	No	3	0.000 to 0.000
SPM Flex	HF	1 ppm	No	6	0.000 to 0.000
Handheld DustTrak	PM <sub>2.5</sub> (mg/m <sup>3</sup> )	0.025 mg/m <sup>3</sup>	Yes	3	0.019 to 0.032
	PM <sub>10</sub> (mg/m <sup>3</sup> )	0.05 mg/m <sup>3</sup>	No	3	0.022 to 0.035

Fixed Discrete Air Monitoring Location 017 - Downwind/Crosswind					
Instrument	Analyte	Morris Industrial Fire Public Health Screening Level <sup>1</sup>	Public Health Screening Level Exceeded?	Number of Measurements	Concentration Range
MultiRAE Pro	H <sub>2</sub> S (ppm)	0.1 ppm	No	3	0.000 to 0.000
	CO (ppm)	--	No	3	0.00 to 0.00
	O <sub>2</sub> (%)	--	No	3	20.9 to 20.9
	LEL (%)	--	No	3	0.000 to 0.000
	VOC (ppm)	1 ppm	No	3	0.000 to 0.000
SPM Flex	HF	1 ppm	No	6	0.000 to 0.000
Handheld DustTrak	PM <sub>2.5</sub> (mg/m <sup>3</sup> )	0.025 mg/m <sup>3</sup>	Yes	3	0.017 to 0.032
	PM <sub>10</sub> (mg/m <sup>3</sup> )	0.05 mg/m <sup>3</sup>	No	3	0.022 to 0.037

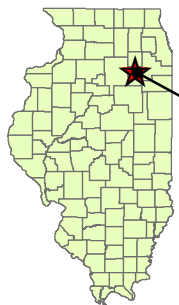
Comments
Start and stop times for each air monitoring instrument varies. The monitoring period is based on the earliest start time and latest stop time out of all units.
1 - Site-Specific Public Health Screening Levels are based on 1-hour time-weighted averages and were established by ATSDR. Fixed discrete monitoring readings are discrete readings, and so do not represent conditions over a full 1-hour period.
2 - PM <sub>2.5</sub> exceedances of site-specific screening levels were observed at the fixed discrete air monitoring locations during the monitoring period. There was no active fire, smoke or site activities conducted at the facility during the monitoring period.

## Notes:

CO - Carbon Monoxide  
H<sub>2</sub>S - Hydrogen Sulfide  
LEL - Lower Explosive Limit  
HF - Hydrogen Fluoride  
mg/m<sup>3</sup> - milligrams per cubic meter  
O<sub>2</sub> - Oxygen  
PM<sub>2.5</sub> - particles that are 2.5 micrometers and smaller  
PM<sub>10</sub> - particles that are 10 micrometers and smaller  
ppb - Parts per billion  
ppm - Parts per million  
VOC - Volatile organic compounds



Source: Esri, DigitalGlobe, GeoEye, Earthstar Geographics, CNES/Airbus DS, USDA, USGS, AeroGRID, IGN, and the GIS User Community



Site  
Location

## Legend



Fire Location



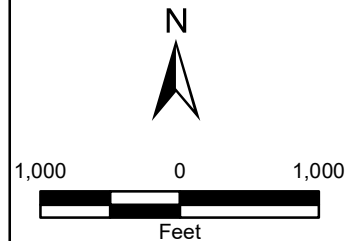
Fixed Discrete Air Monitoring Locations



Former Approximate Evacuation Zone

Source: Esri 2020

Note: Air monitoring locations subject to change based on site conditions and response objectives



Morris Industrial Fire ER  
Morris, Illinois

**Figure 1**  
**Air Monitoring Stations**  
07/27/21 07:21 to 07/27/21 19:01



**TETRA TECH**

Prepared For: USEPA

Prepared By: Tetra Tech Inc.